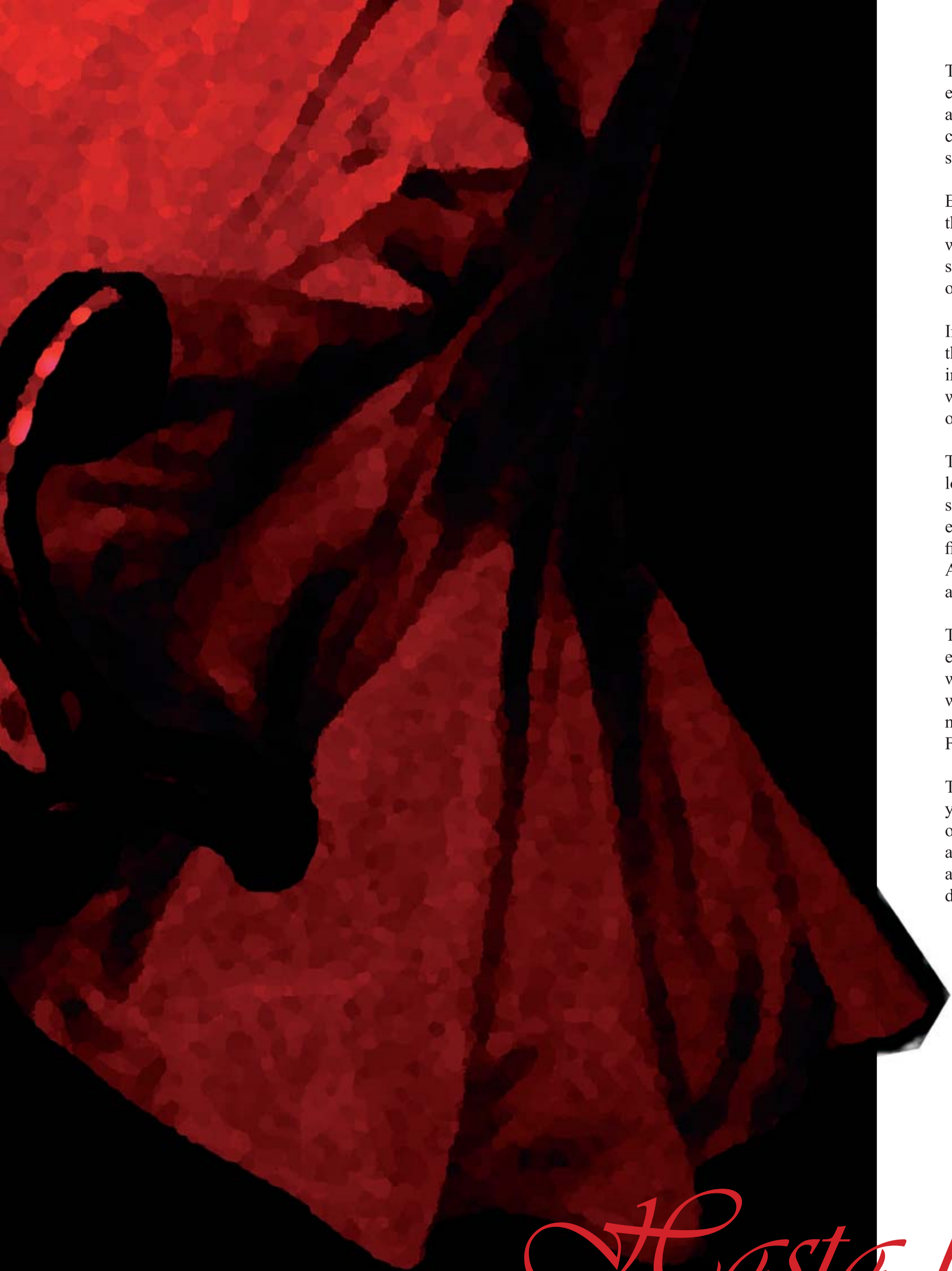




*Hasta la guitarra mia llora cuando dice adiós*



The design of Sundsvall Theatre and Art consists of three volumes, each one sloping upwards to the next. The roof terraces of the second and third volume are public places where you can have a view of the city and the sea, and why not take a lunch break or have a picnic in the sun?

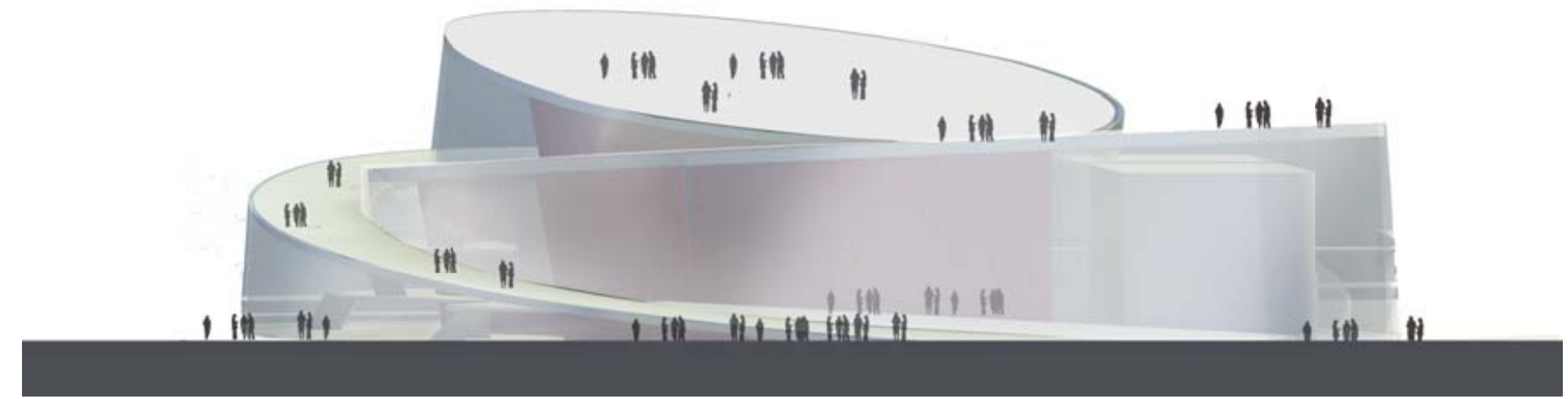
Entering the theatre from the plaza by the slope at level one, or from the north entrance on the ground floor, you'll meet the foyer and its red wavering flounce wall. The foyer surrounds the auditoriums on three sides. The facade glass is screen printed in shades of white fading from opaque to transparent.

In the western part by the plaza, flooding in the red evening light, lies the Art Café and an exhibition wall facing west. The plaza can turn into an outdoor scene during music concerts and street theatre shows, whereas the slope turns into galleries for the audience. The Art Café opens up during the summer and stretches out to the plaza.

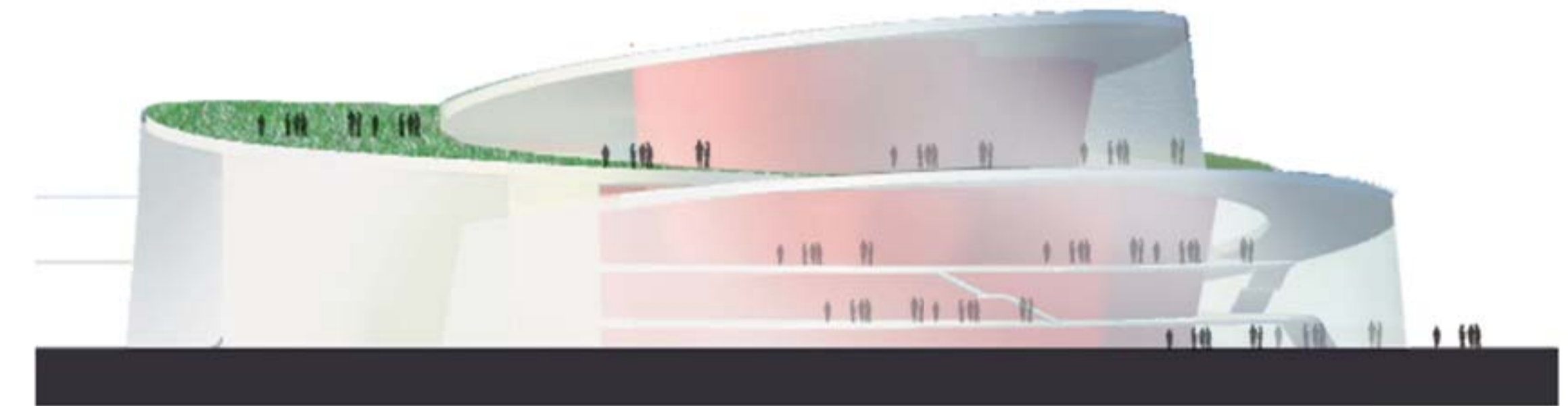
The exhibition wall has room for photo and art exhibitions in the lower part, leaving the upper part for a big screen for moving pictures, slideshows, music videos, movies and poetry. The wall is the perfect exhibition space for both established artists and young talented filmmakers, musicians, novelists and painters operating in Sundsvall. An evening show at the wall transforms the whole plaza into an auditorium!

The northern part of the foyer contains main communications and entrances to the auditoriums. Level two connects the Theatre and Art with the City Library. The ground floor has an entrance facing north where a new walk and bicycle bridge connects the city centre to the north side of Sundsvall. Look out for the cup scene at the ground floor! For children's storytelling or just a place to hang around with friends...

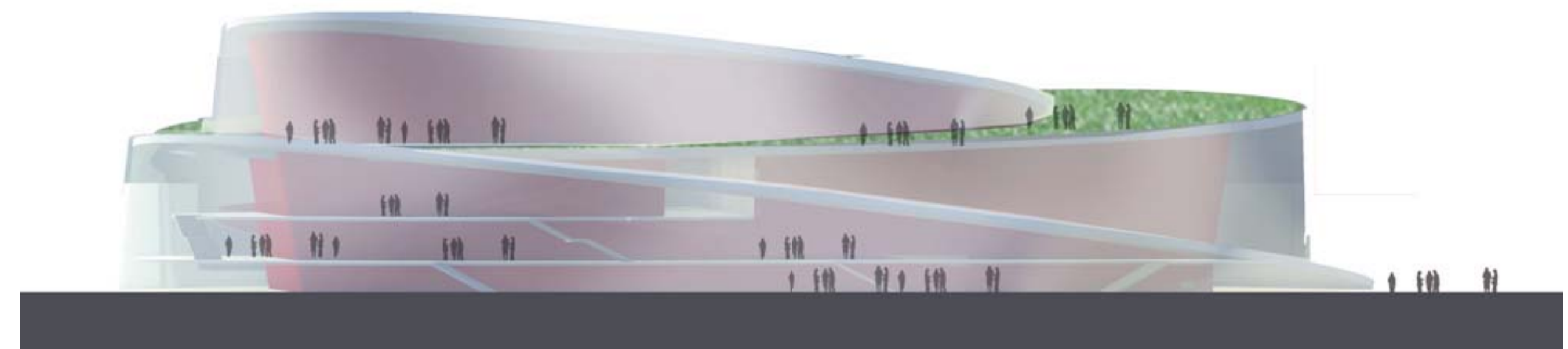
The west foyer offers a wonderful view of the sea while waiting for your jacket at one of the cloak room islands at ground level or level one. The best view however, is offered by the restaurant and sky bar at level four, complete with entrance from the roof terraces, as well as from the foyer. The perfect balcony for a drink and some fresh air during a break between acts!



Elevation west 1:400

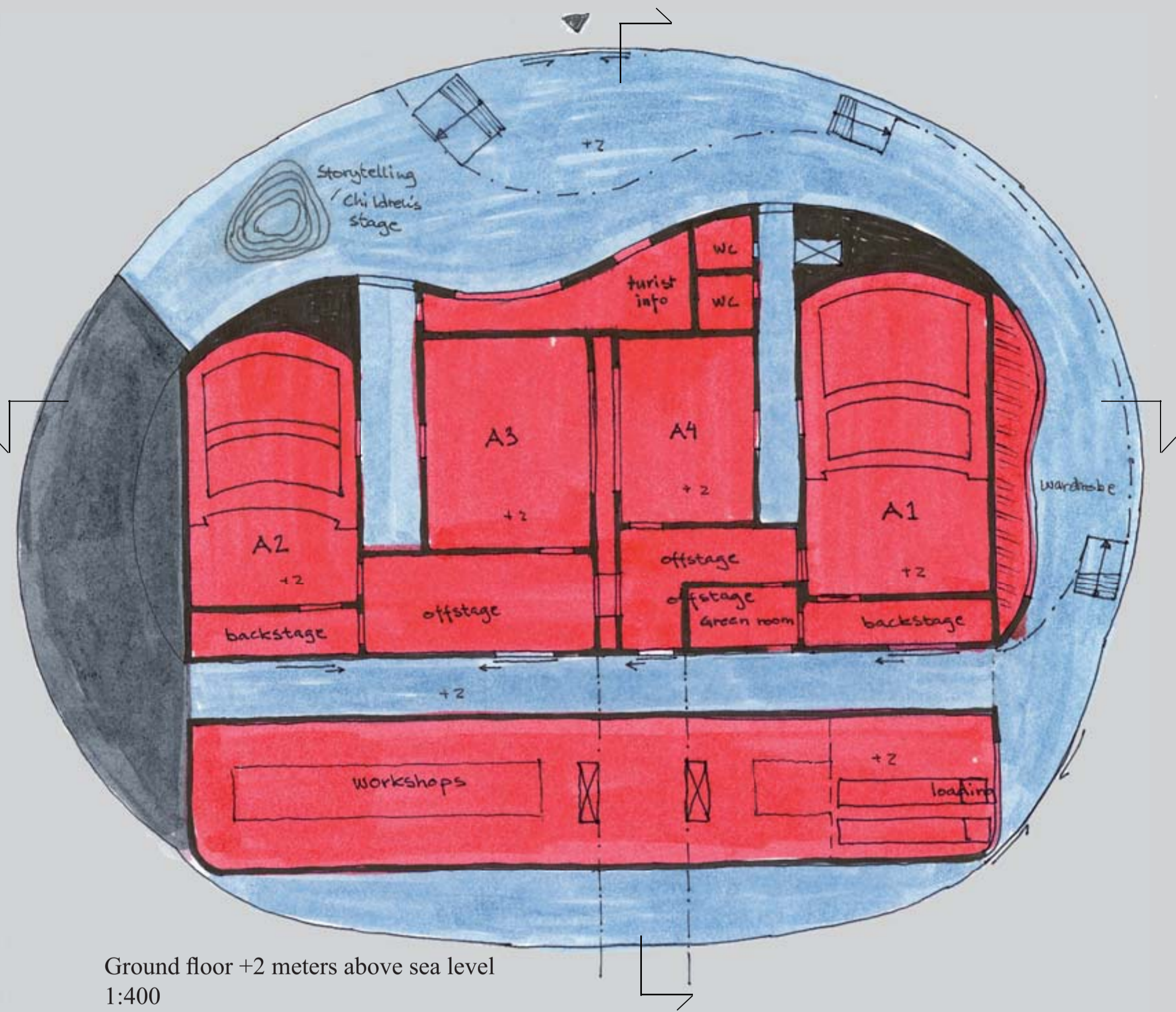


Elevation east 1:400



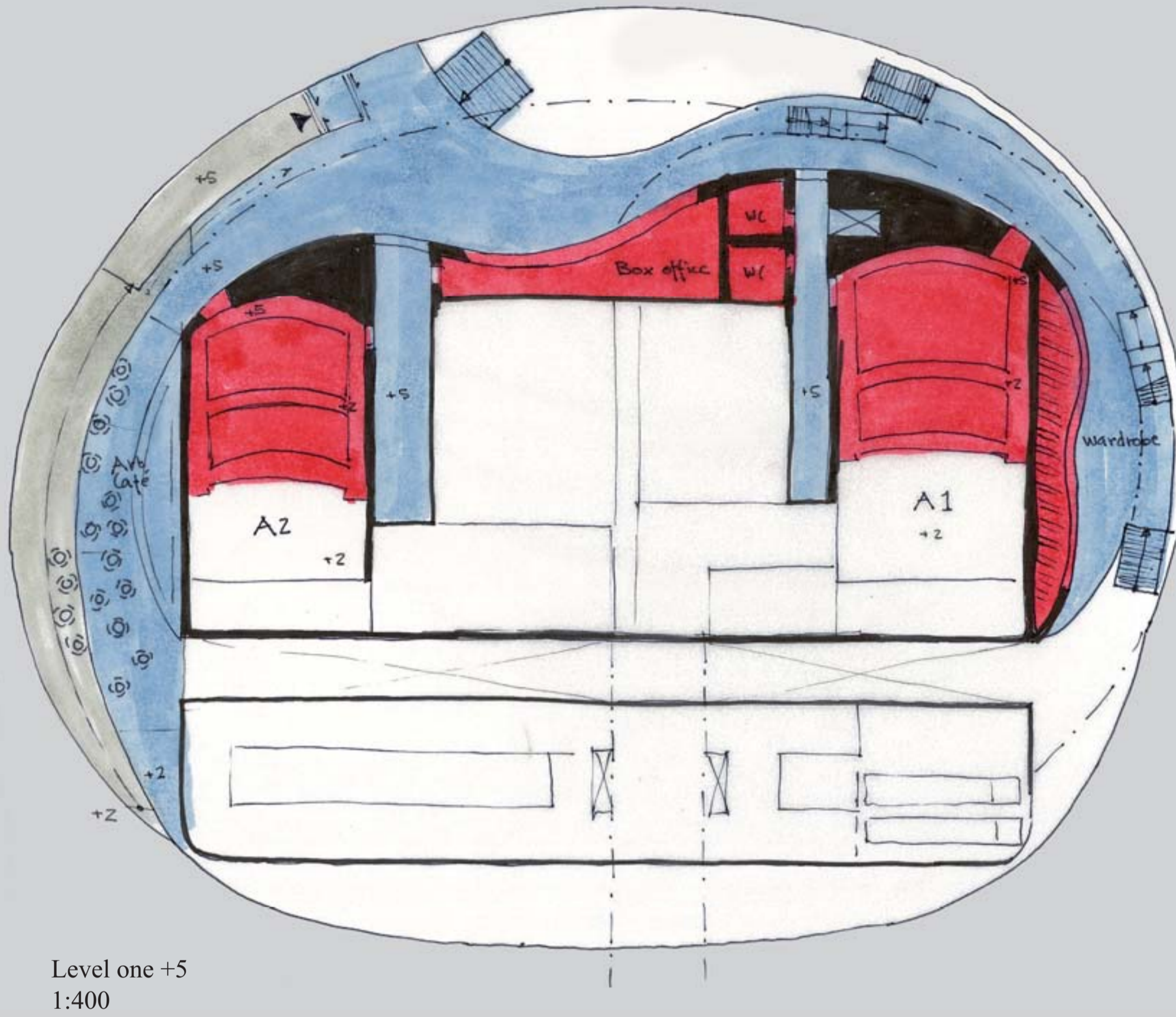
Elevation north 1:400

*Hasta la guitarra mia llora cuando dice adiós*



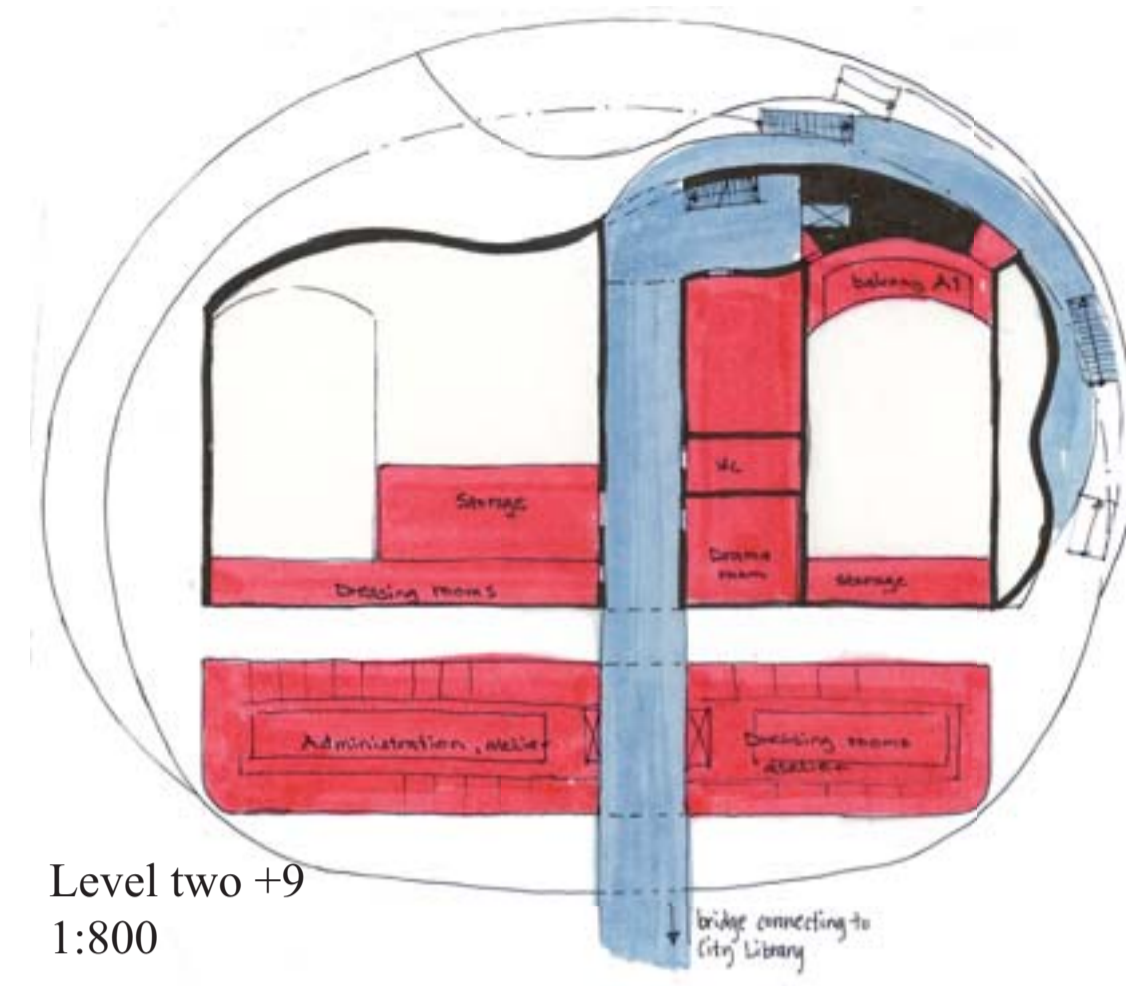
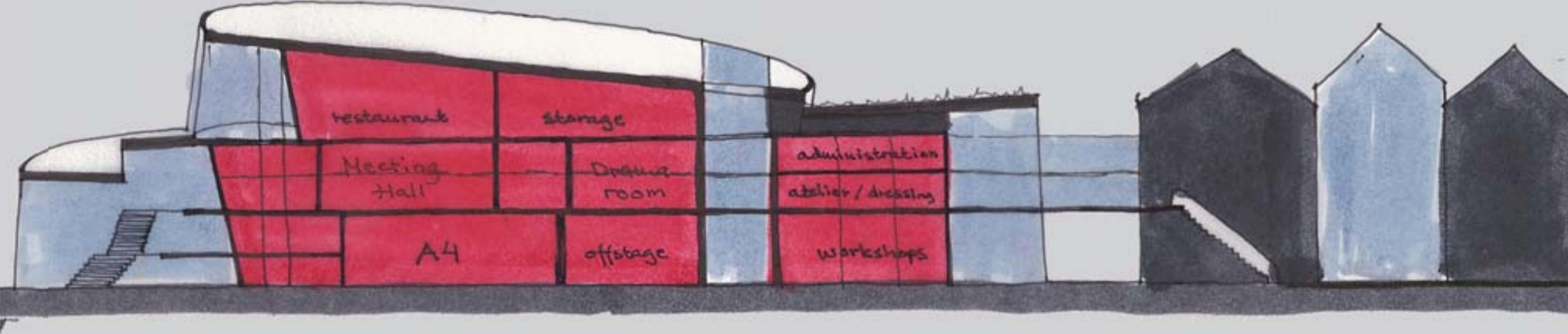
Ground floor +2 meters above sea level  
1:400

West-east section 1:400

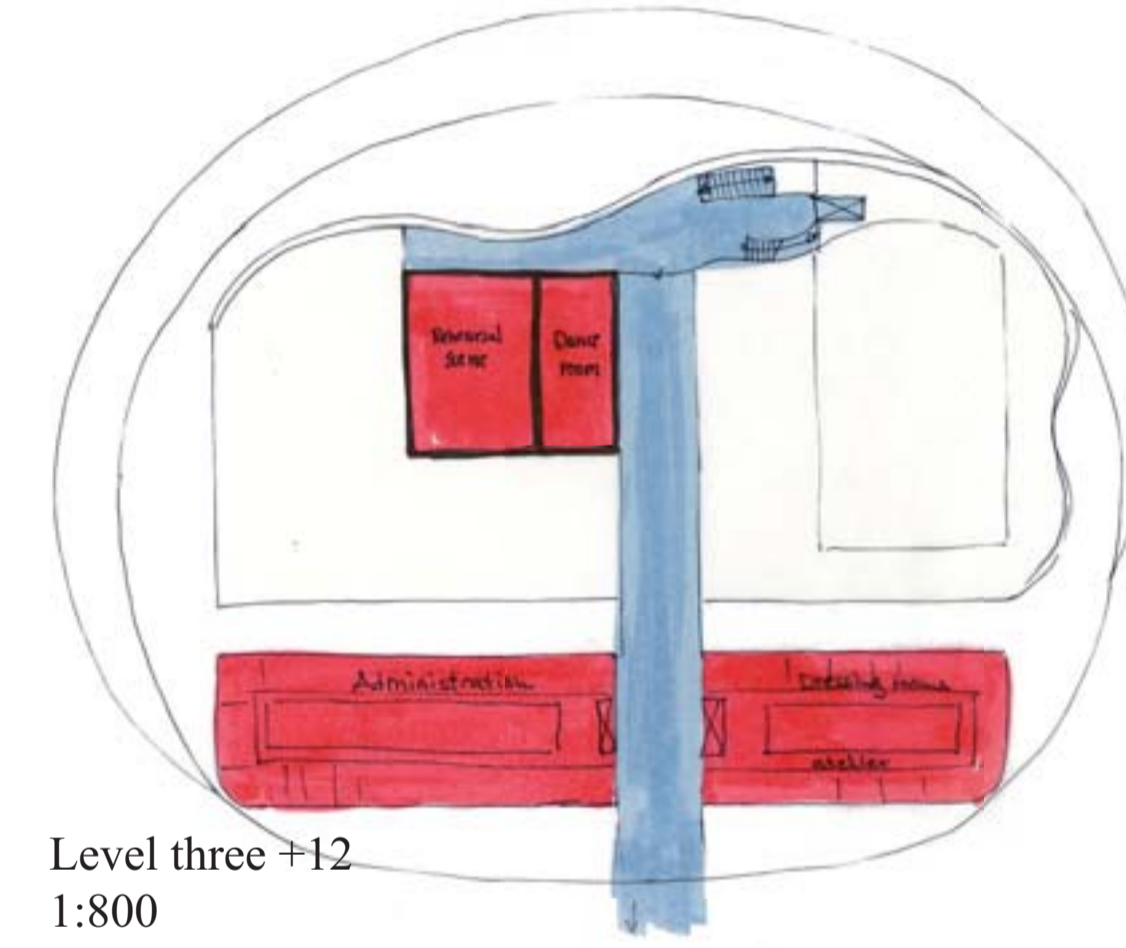


Level one +5  
1:400

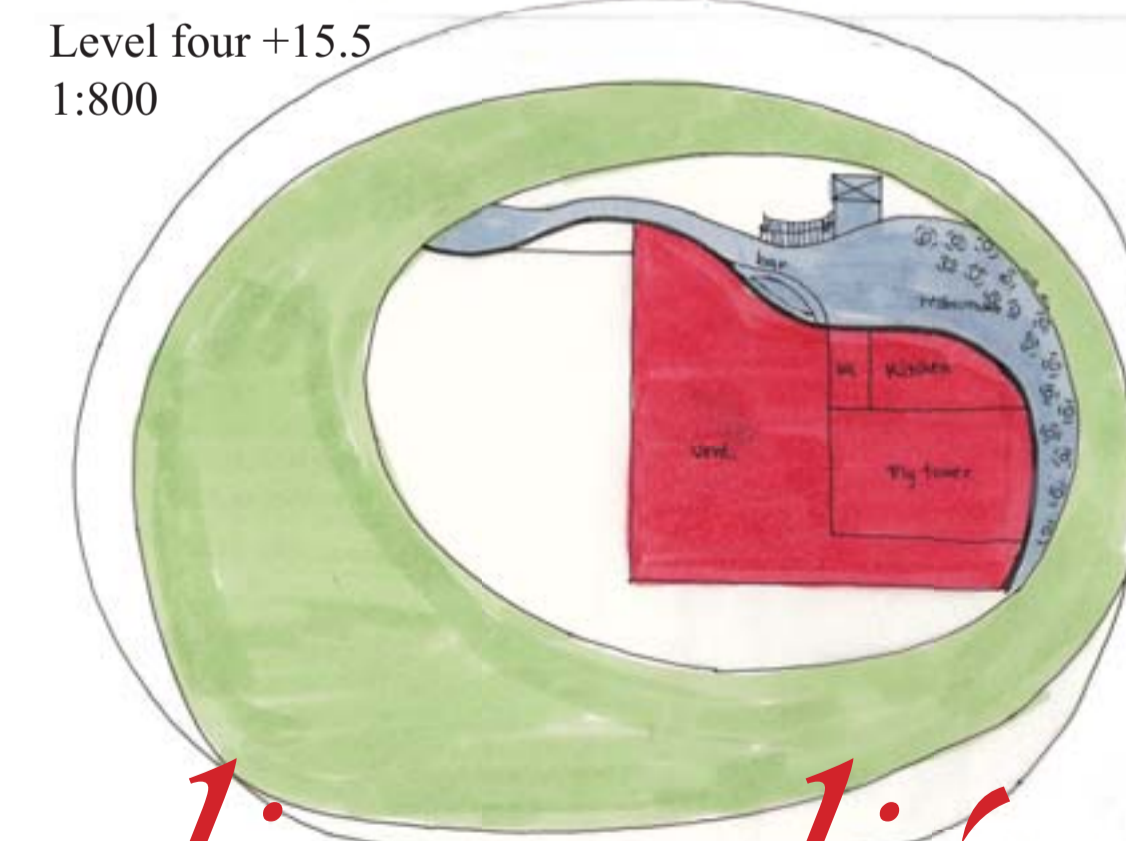
North-south section 1:400



Level two +9  
1:800

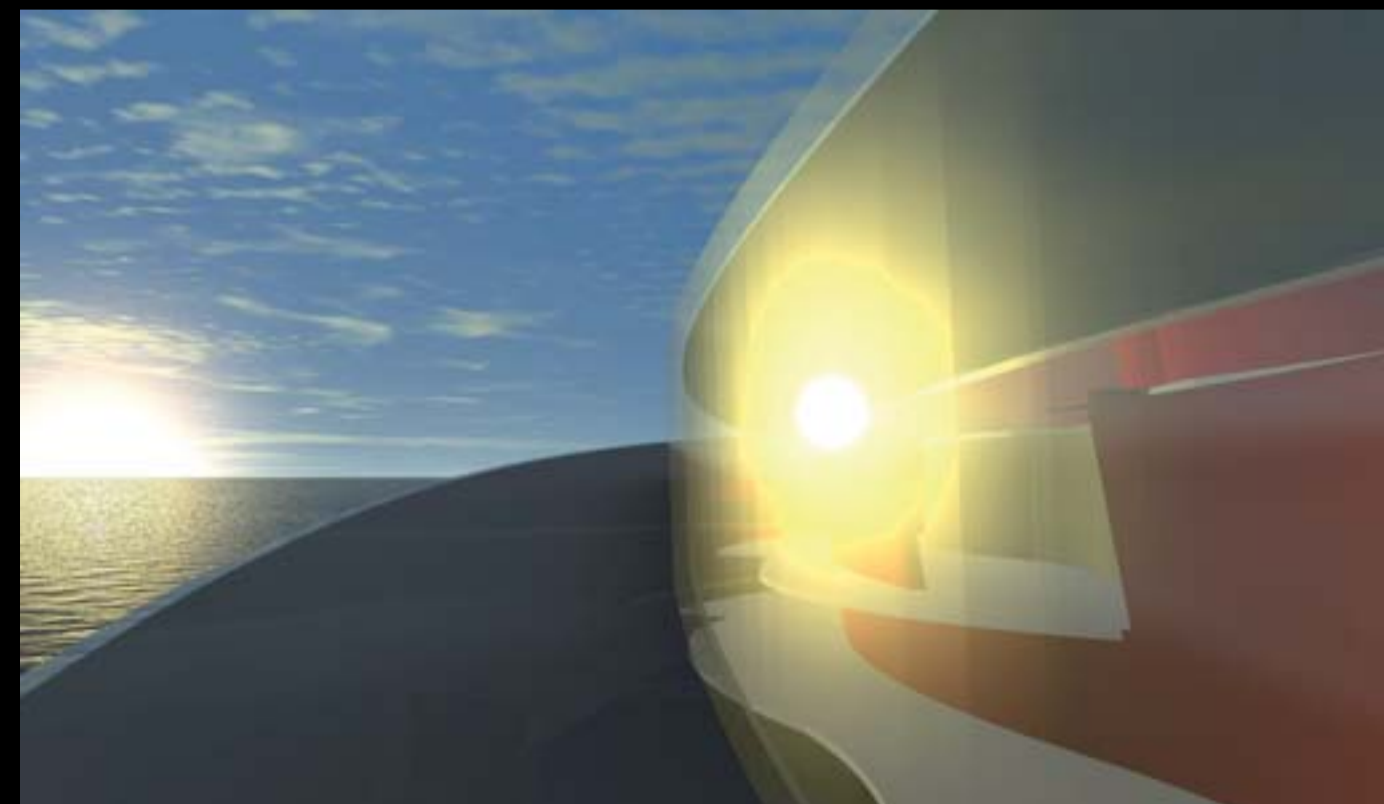
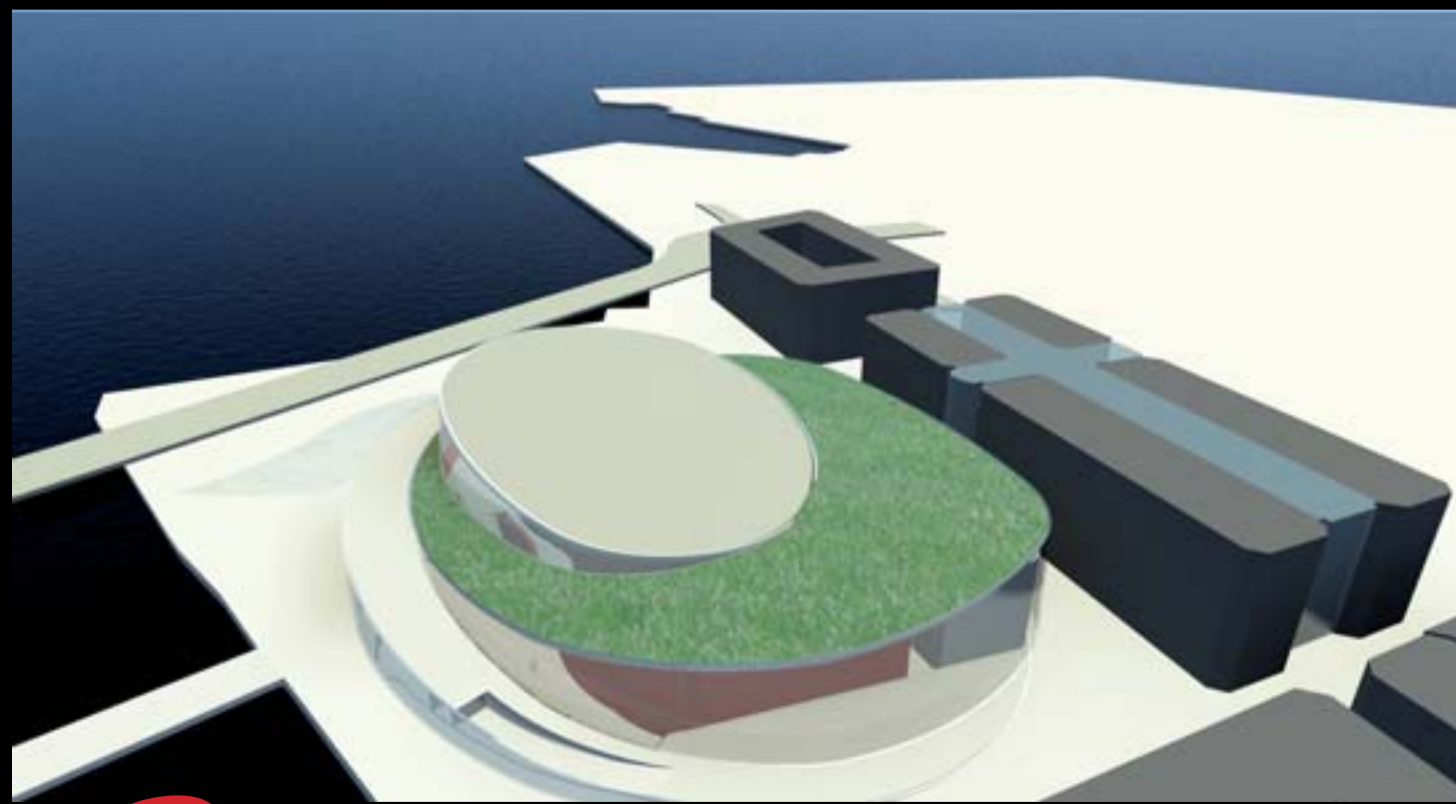
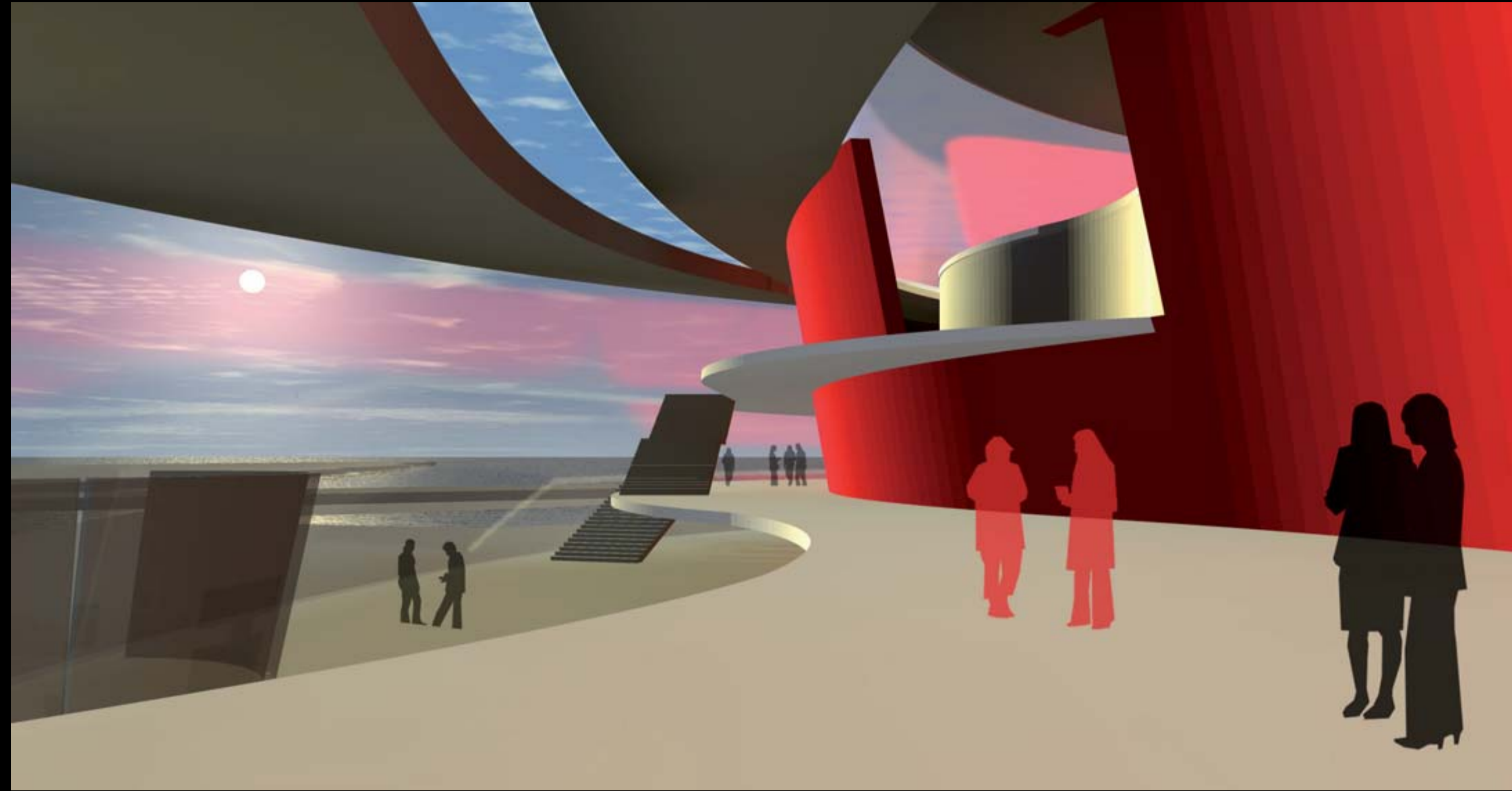
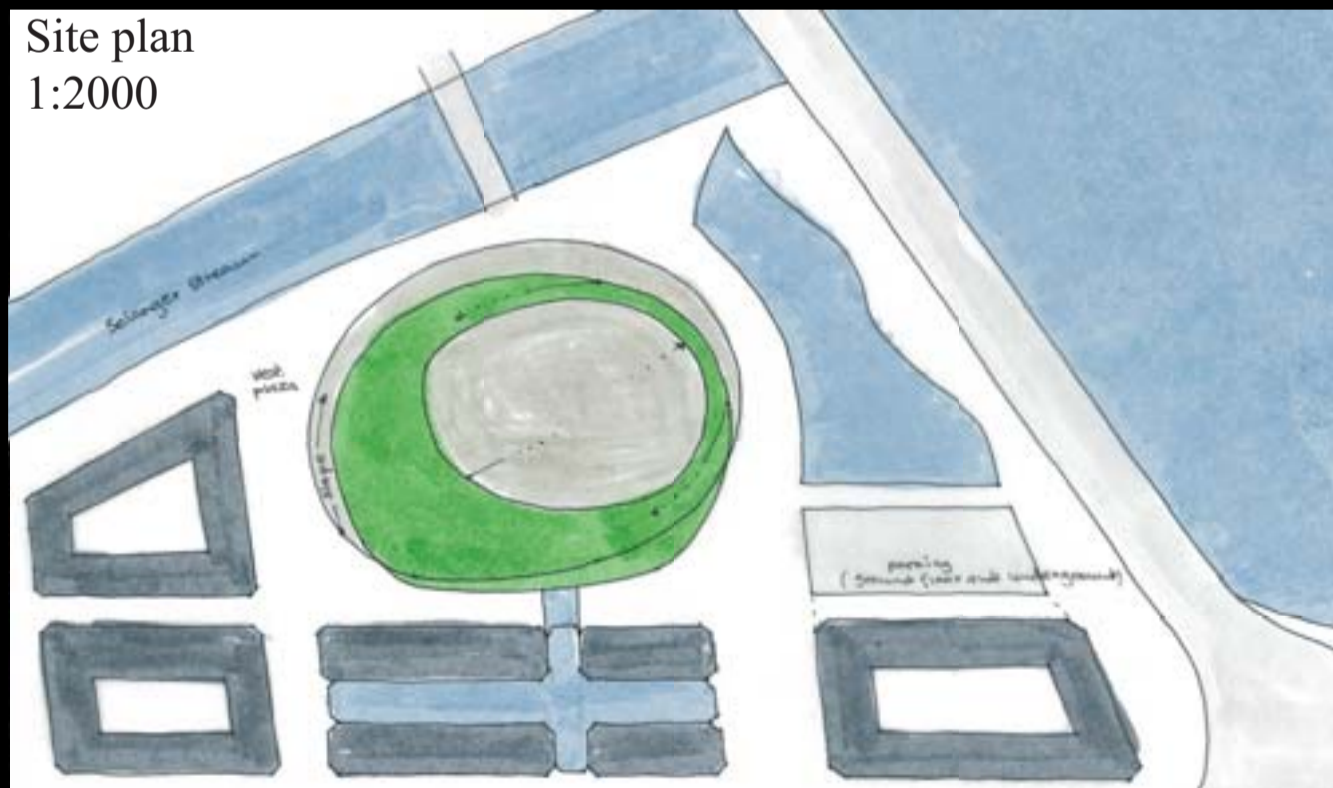
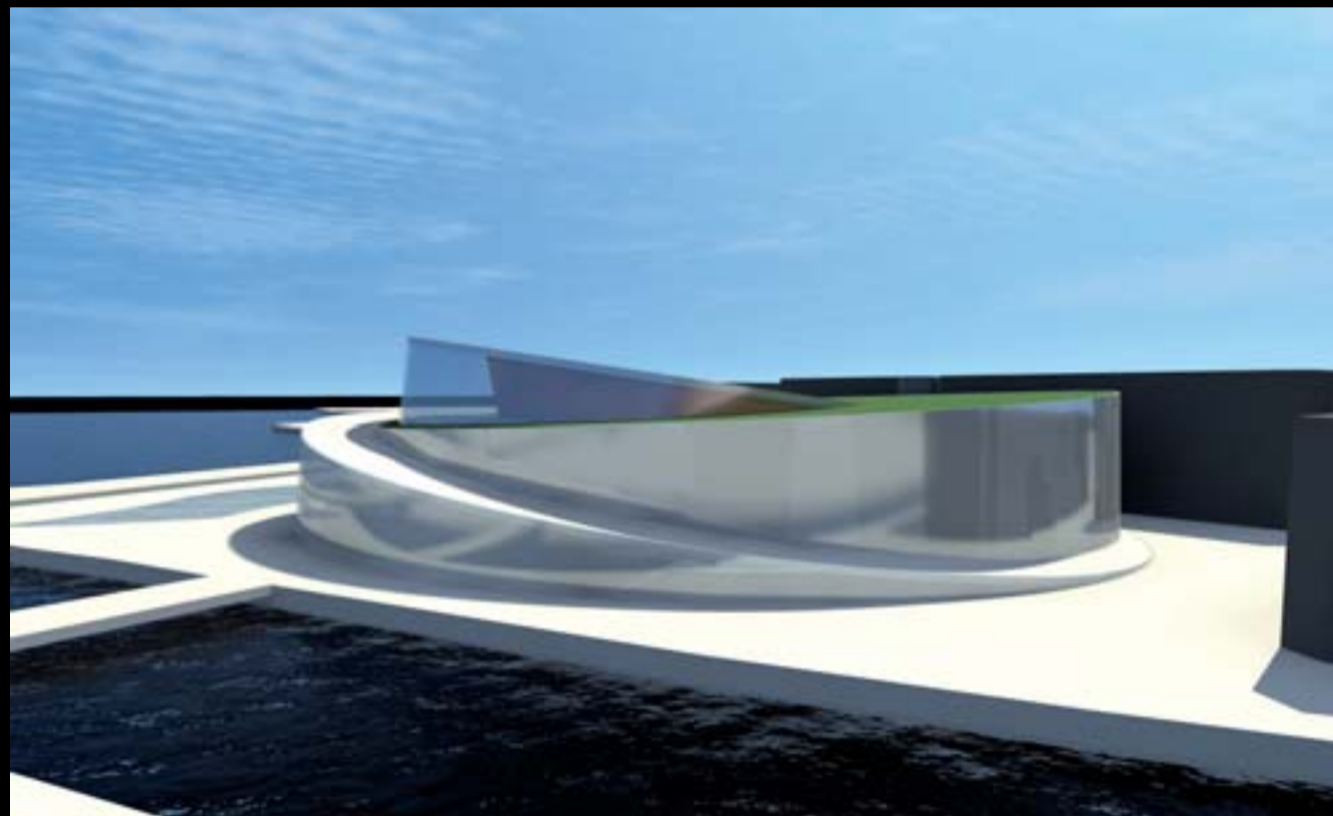


Level three +12  
1:800



Level four +15.5  
1:800

*Hasta la guitarra mia llora cuando dice adiós*



*Hasta la guitarra mia llora cuando dice adiós*