

# Performing Arts Center & Theater

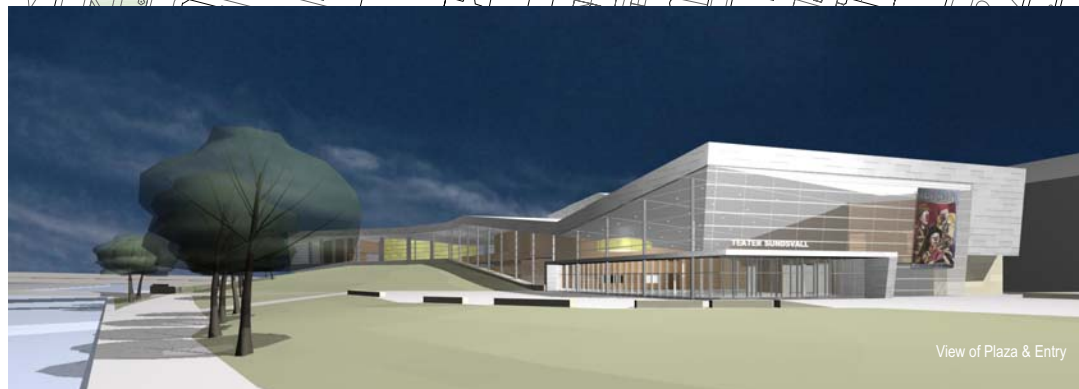
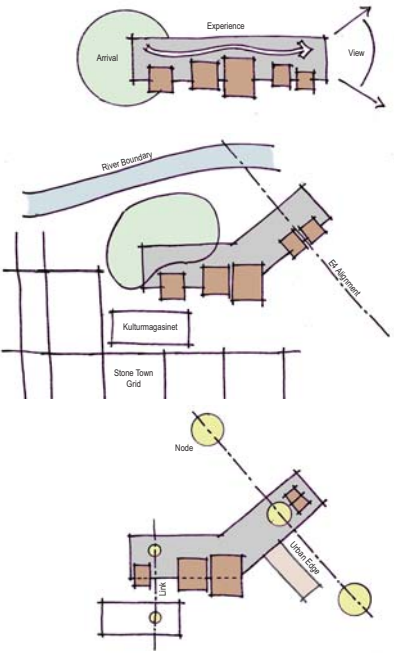
## Sundsvall, Sweden

### The Site

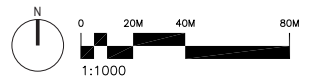
At the intersection of the Selångerån River, the inner harbor and a primary city arterial (the E4), the site of the new performing arts center for Sundsvall, Sweden presents design challenges on many levels. At both architectural and urban scales there is opportunity to make a monumental gesture - to not only create a landmark theater complex and cultural center, but to enhance the waterfront, engage the historic Stone Town core to the south, and act as a catalyst for future development.

The E4 arterial is to be relocated further east, presumably to create a larger site for the new building. Many cities have made the decision to relocate major roadways away from their waterfronts. Given Sundsvall's configuration, it would be challenging to implement such a major rerouting of the E4 away from the water. In our scheme we assume that the E4 will be moved as planned and the new building must engage it. The new road will be anchored at each end with a roundabout to help slow traffic along the waterfront. The desire is to make the E4 less of an expressway and more of a boulevard.

Additional important considerations include creating links to the old downtown and the Kulturmagasinet. The green way esplanade (Esplanaden) is a major axis extending through Stone Town from north to south. Our site plan extends this greenway along the river to the east and west, connecting the old town to future river and harbor edge developments. It is also at this confluence that the main entry to the performing arts center will be. The proposed design will then frame a new park and river walk, giving new life to the currently underutilized river's edge and focus to the mixed-use development that is anticipated.



View of Plaza & Entry



**Concept**

The historic city center, the river and the harbor are major influences on the project. Our design creates a dialogue between the old wood city and the current stone city, between the interior and exterior, between light and dark. The building's exterior is clad in stone, metal and glass. As solid exterior walls intersect the glass skin, they are transformed into warm wood on the interior. Public spaces are arranged to take advantage of light and views.

Being a public building, the project must be seen as more than a theater complex, but as a place for people to come together for many different activities. The design provides a variety of public spaces for sitting, talking, thinking, watching and dreaming. These spaces also can be opened to the outdoors when the weather commands through large movable window walls. This common space is also the main circulation spine and a collector of the theaters and smaller rooms. Behind the performance spaces are the actors' areas, workshops and art studios.

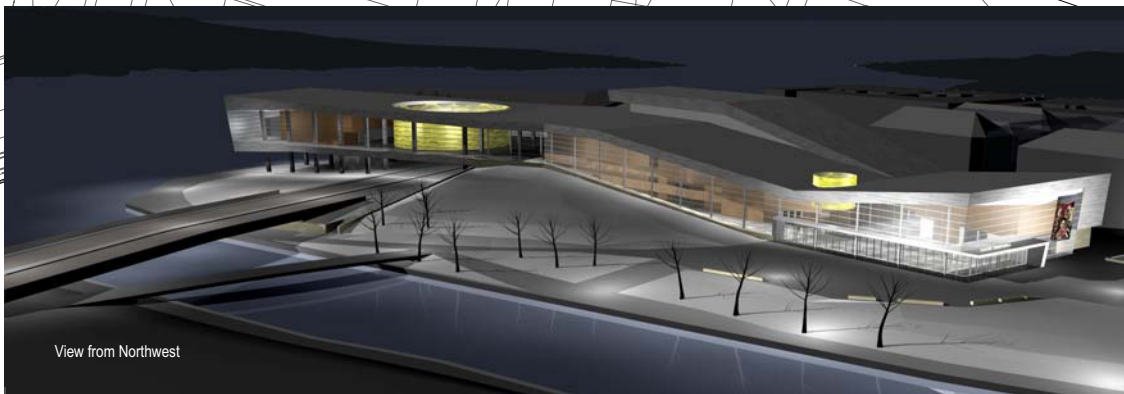
**Form**

The arrangement of the building is based on a practical relationship of program, a connection to the water and how it fits within the urban plan. The form was created to give the maximum outdoor area to the waterfront park to the north. The building mass starts low at the main entry and rises slowly as it moves to the east. The building appears to climb up the raised landscape as it prepares to span over the road. As it reaches its full elevation the floor extends out over a limestone wall and bridges over the E4, where it is ultimately supported on concrete columns. The easternmost end of the building extends out over the water in a gentle gesture. The building form could be interpreted as part watery beast and part ancient ship.

The limestone wall running parallel to the E4 emerges from under the bridge to become a three story stone building, which houses the Administrative program elements for the theater. The first (street level) and second levels will be leased retail and office space respectively. This will help complete the city block and reference Stone Town's scale. Loading for the new performing arts facility as well as the existing Kulturmagasinet will be located at the loading court to the south.

**Main Floor Plan**  
1:400

- |                            |                    |                      |
|----------------------------|--------------------|----------------------|
| 1 Existing Kulturmagasinet | 12 Storage         | 23 Scenery Storage   |
| 2 Lobby                    | 13 Office          | 24 Prop Storage      |
| 3 Cafe                     | 14 Auditorium #1   | 25 Costume Storage   |
| 4 Kitchen                  | 15 Painter's Shop  | 26 Light Studios     |
| 5 Exhibition               | 16 Carpentry       | 27 Dressmaker's Shop |
| 6 Box Office               | 17 Smithy          | 28 Retail Tenants    |
| 7 Cloakroom                | 18 Delivery Zone   | 29 Staff Entrance    |
| 8 Green Room               | 19 Make-Up & Masks | 30 Mechanical        |
| 9 Auditorium #2            | 20 Dressing Rooms  | 31 Harbor Cafe       |
| 10 Restroom                | 21 Artist's Foyer  |                      |
| 11 Instrument Storage      | 22 Mounting        |                      |



View from Northwest



View from South Quay



Lobby Interior



View from Harbor

**Light**

Light is an important design influence in our project. Winters at the site are cold and dark and summers are light and pleasant. The new building will provide expansive, highly insulated glass walls to allow maximum light harvesting during daylight hours. In the dark winter months, the building will glow and be a beacon on the waterfront. The large circular opening at the bridge and the skylight at the entry lobby will allow additional daylight into and through the building. A detailed glass and metal screen, the light wall, will catch light, enhance it and direct it through colored glass into the building. In the dark hours, the light walls are fitted with full spectrum light fixtures to give theater goers a little dose of "natural" light to help get them through until summer.

**Relationship to the Kulturmagasinet**

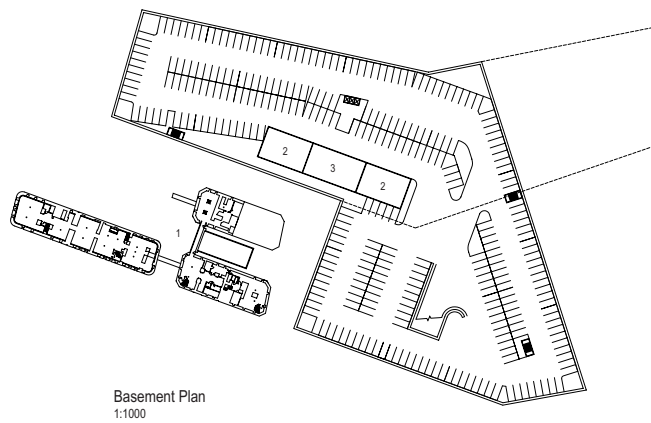
The existing Kulturmagasinet is an important building close to the hearts of citizens across the city and country. Locating the new performing arts complex at this location will create a distinct ensemble of art and culture. The existing building will be connected directly to the new theater building lobby with a simple glass link that can be locked off as necessary. The link will extend the existing "winter garden" into the large new day-lit lobby and effectively double this much loved space.

The area surrounding the existing building is intentionally left undeveloped to maximize access to natural light, views and fresh air. Additionally, this open space allows the existing Kulturmagasinet to maintain the integrity of its historic stone façade.

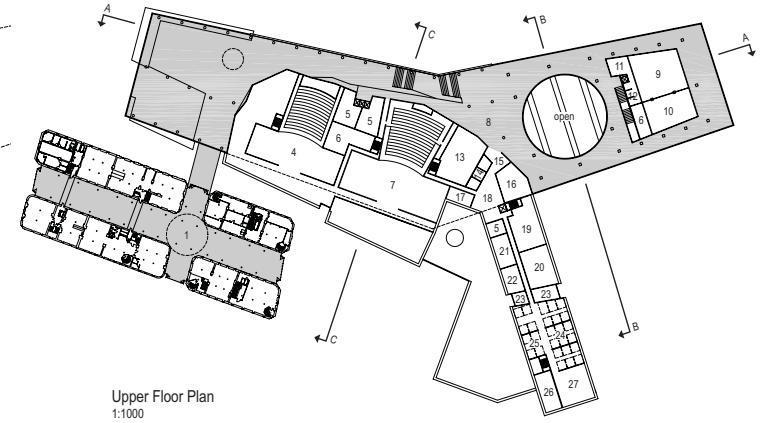
**The Building Skin**

The exterior of the building will be a combination of concrete, limestone, metal panel and curtain wall. The concrete will only be exposed to the exterior at the columns beneath the eastern most projection. The walls behind the limestone, metal panels and the roof will be heavily insulated. The curtain walls will be double and triple glazed units as required. Insulated, translucent blinds will be incorporated into the window system to increase thermal properties and give necessary glare control.

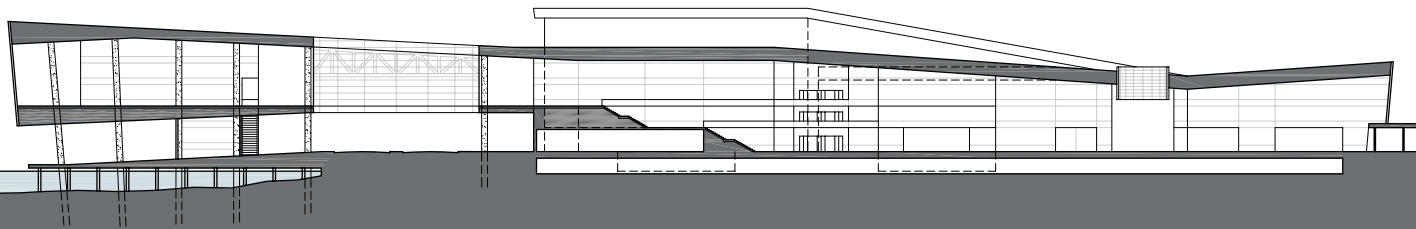
- 1 Existing Kulturmagasinet
- 2 Stage Basement
- 3 Mechanical
- 4 Auditorium #2
- 5 Restroom
- 6 Storage
- 7 Auditorium #1
- 8 Lobby
- 9 Auditorium #3
- 10 Auditorium #4
- 11 Green Room
- 12 Dressing Rooms
- 13 Experimental Stage
- 14 Youth Activities
- 15 Reception
- 16 Meeting Hall
- 17 Sound Design
- 18 Mail / Copy
- 19 Dance Room
- 20 Drama Room
- 21 Props / Costumes
- 22 Archives
- 23 Meeting Room
- 24 Theater Västermorrland Offices
- 25 Guest Performances Offices
- 26 Stage Office
- 27 Dayroom



Basement Plan  
1:1000



Upper Floor Plan  
1:1000



Section A-A  
1:400



Section B-B  
1:400

### The Theaters

The new building plan evolved from an intense study of both site influences and program elements. There is a natural sequence of spaces in a theater. When a patron enters the building through a deep air lock they have easy access to the box office and coatroom. The restaurant/café is adjacent to the main entry, as is an exhibition gallery space. The link to the existing Kulturgasinet connects to the lobby at this point as well.

The main lobby is large enough to handle an intermission from both of the larger theaters simultaneously. Circulation to and from the theater levels is made clear with large stairs and ample elevators to move people from level to level. The theaters to the east may seem remote, but they provide the opportunity for very distinct performance types. Both box theaters will have level floors with movable chairs and movable walls. The small theaters can be combined into one large space. The walls from the theaters to the lobby (at the east end) can open to give an even larger space and an expansive view of the harbor. Stairs and an elevator connect the higher level back down to the water front park.

### Parking and Building Service

The majority of the building loading and servicing will be from a paved and landscaped service court at the southeast corner. From here, loading and deliveries will have direct access to theater workshops and back-of-house areas. Great effort will be taken to respect the existing Kulturgasinet. A discretely paved area to the south of the Restaurant at the entry will allow loading access for both the food service and the gallery space. One level of parking will be located directly below the building.

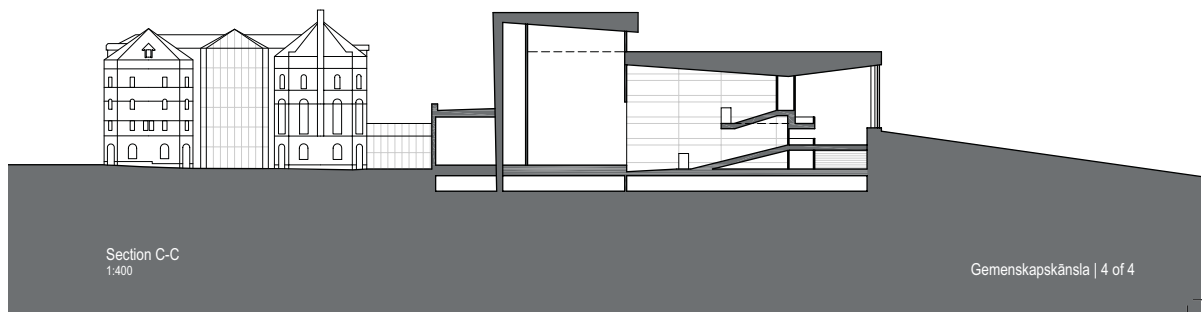
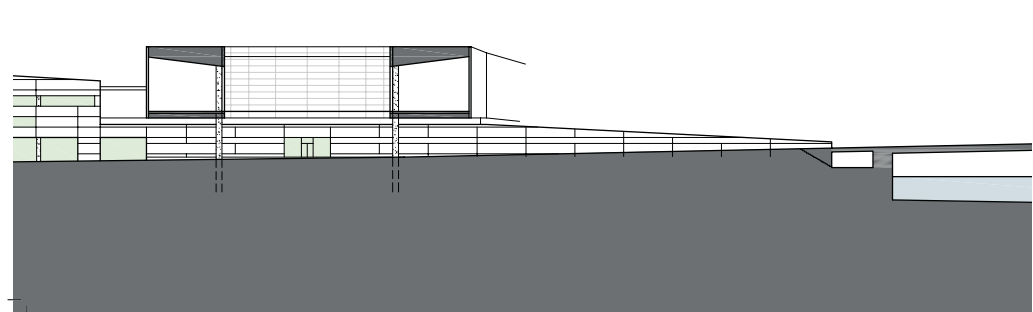
### Materials

#### Exterior:

- Concrete
- Limestone
- Aluminum and Glass Curtain Wall
- Metal wall panel

#### Interior:

- Stone floor
- Wood acoustic walls
- Glass doors and interior windows
- Plaster walls
- Stone walls where exterior stone wraps in
- Acoustic fabric ceilings



Section C-C  
1:400