

PILOT ACT

A landmark for Sundsvall
Our project establishes the new Art Centre as a clearly identified landmark, a new urban activity and a public square.

The building is conceived in strong dialogue with the City of Sundsvall, the sea, the lake, and the existing Kultur Magasinet.

The place where the new Art Centre of Sundsvall is going to be built has a history of recreation, it is a place for brand of guests and people. Our project continues this legacy, by creating a public square through the building, giving continuity to the outdoor area that will run through the site in a east-west direction.

Continuity and innovation

The project is located at the edge of the Stone City, of character to be defined by regional geometrical grid. The project introduces a variation in the grid, creating the permeability and adding a new outdoor experience through the evolution of the city's "granite order" through terraces, balconies, stone terraces and glass.

The project is a re-orientation of the linear organization of the Kultur Magasinet, the project is organized through programmatic zones, oriented in an east-west direction. The glass curtain exterior shall create a continuity with the line of Kultur Magasinet, and creates the public transition, giving an overall coherence and clarity.

The central core will become the heart of the new complex, facing the new park with the existing Kultur Magasinet, giving clarity to the internal organization of the culture centre.

The public passage will also create a strong link between the two squares created on the east and the west side of the building.

Atmospheric Architecture

The exterior envelope is framed in copper, timber, glass, combining openness and mystery.

The use of transparent material creates space for the exterior walls of the auditoriums, combined with the central glass of the entrance creates a subtle drama and an elegant expression, giving the building a strong presence in the urban context.

The building envelope catches the light, reflects the color and the movements of the city and the river. The interior is designed with a high level of detail and the public and private spaces are a natural result of the volume and geometry, creating a specific, organic atmosphere.

Depending on light and weather conditions, the volume becomes sometimes transparent, sometimes translucent, sometimes opaque, sometimes solid, sometimes heavy and sometimes light. At night the building becomes a glowing lantern, marking a strong presence both in the distance and at close.

A building in movement

Through its volume the envelope merges interior and exterior, creating continuity between the city and the theatre, a continuous progression through the urban, the lake towards the interior of the halls.

Inside the building each space is unique, each hall is an identity, the glass is not a neutral spatial separator, creating outdoor interior space and an overall evolution of space, light and climate.

The combination of simple volumes with different orientations and geometries creates a great diversity of spaces, a strong background for the artistic activities.

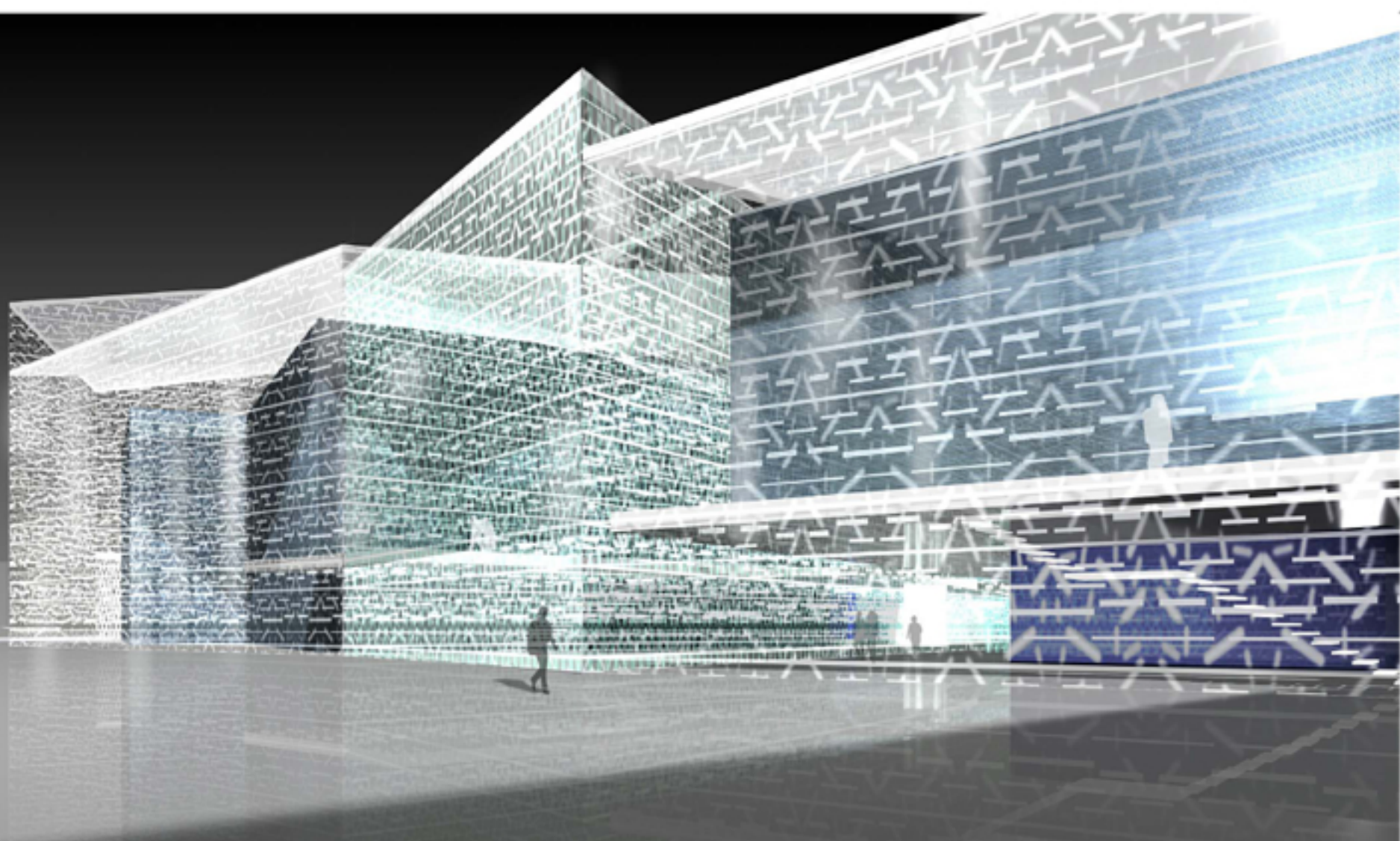
Place city to see

Through its conventional organization the project, between the ground, creating two outdoor public places suitable for meeting, outdoor events, theatre and activities.

The architectural treatment of the exterior surfaces continues the geometry of the building, being outdoor an interior and creating a fluid movement from the outdoor space to the new entrance.

The exterior space will be treated in a combination of ritual stone paving with different textures and materials supported by frame of aluminum plate. The plates will be attached to heavy base and the steel frame will contain stainless steel epoxy to hold it possible to install stages and equipment for outdoor events.





High Potential

The building is designed to give optimal working, playing and viewing conditions. It is conceived to give life to the diversity and creativity of the public, the artists and the staff.

The combination of the volumes and spaces sets in motion a strong interaction between the different functions, although respecting the hierarchy of each activity.

The diversity of the spaces in terms of size, enclosure and height gives an additional potential to the building and the different degrees of its enclosure and brightness create spaces suitable for various uses and aims, for playing, meeting and for exhibitions.

The building has a compact layout, and efficient organization which has made it possible to create double-height spaces and several multifunctional spaces and floors which can be used for specific events.

These spaces, along with the circulation and common spaces set as meeting points between different categories of users. They facilitate interdisciplinary activities, informal meetings. They are also potential stages for improvisation or artistic events.

Auditorium

Each a different cell have to offer a total variety in terms of theater activities, musical, historical and setting. The design will be straightforward, respecting a certain hierarchy that will make it possible to offer all the audience a different experience for the specificity of the play or the activity. Flexibility, adaptability will be the main conditions for the design.

Functional organization

From the vertical layout level towards the horizontal reaches a common floor where both the audience and the staff can be located. From this space he is directed towards the specific spaces of each auditorium, each about being independent, facing a problem which needed to exist in the public. The stages of auditorium 1 and 2 are located at ground level, auditorium 3 and 4 on the first floor easily accessible by stairs, elevator and a suspended bridge.

On the ground floor we have placed the cafe restaurant, the exhibition space, the gift shop, the meeting hall and the theater entrance. These spaces are located on the stage set for accessibility independently through the public passage area when the theater lobby is closed. These spaces are located at the south of the new complex close to the existing Kultur Magasinet.

All activities and spaces oriented in particular towards children are located on the first floor at the center of the new complex. These spaces include main, dance room, experimental stage, youth activities, the auditorium 3 and 4 can be reached directly from the public passage or from the back stage depending on the type of activity. School classes for children might go directly to the auditorium without having to go through the lobby and foyer, whereas young public will go through the lobby.

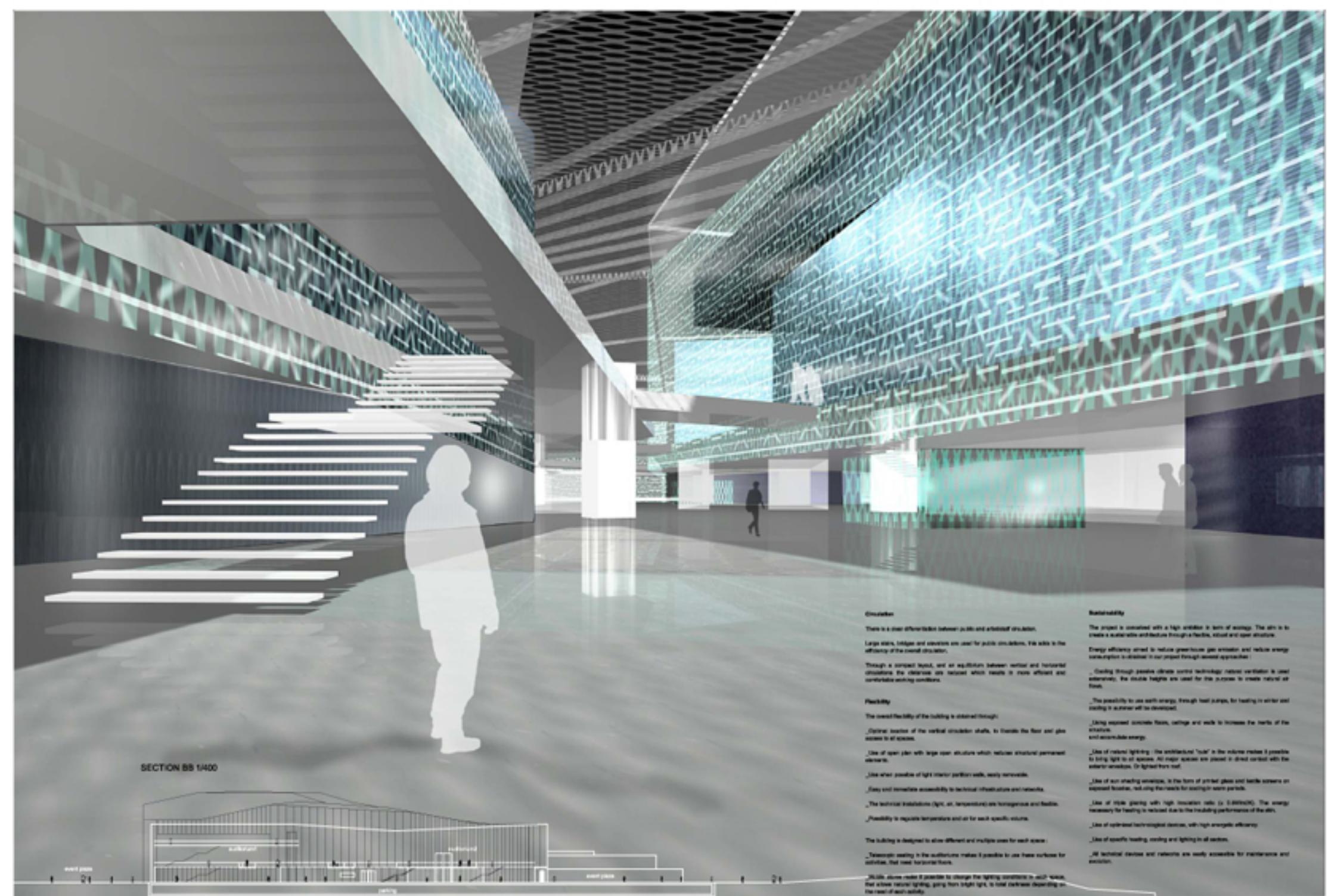
The workshop, the dressing room and the administration are located on the north side of the site, at the rear of the auditorium 1 and 2.

There is a direct and independent technical path between these spaces and the auditorium 3 and 4. The delivery area is located in the northwest angle with easy access from the highway.

The administration and the dressing rooms will have direct access towards the front.



SECTION AA 1/400



SECTION BB 1/400

Circulation

There is a clear differentiation between public and staffed circulation. Large stairs, bridges and elevators are used for public circulation, 70% adds to the efficiency of the overall circulation.

Through a compact layout, and an equilibrium between vertical and horizontal circulation, the elevators are reduced which results in more efficient and comfortable working conditions.

Flexibility

The overall flexibility of the building is obtained through:

- Optimal location of the vertical circulation shafts, to traverse the floor and give access to all spaces.
- Use of open plan with large open structure which reduces structural permanent elements.
- Use when possible of light interior partition walls, easily removable.
- Easy and immediate accessibility to technical infrastructure and networks.
- The technical installations (light, air, temperature) are homogeneous and flexible.
- Possibility to regulate temperature and air for each specific volume.

The building is designed to allow different and multiple uses for each space.

- Temperature zoning in the auditoriums makes it possible to use these volumes for activities that need horizontal floors.

• Mobile screens make it possible to change the lighting conditions in each volume, that allows natural lighting, going from bright light, to total darkness depending on the needs of each activity.

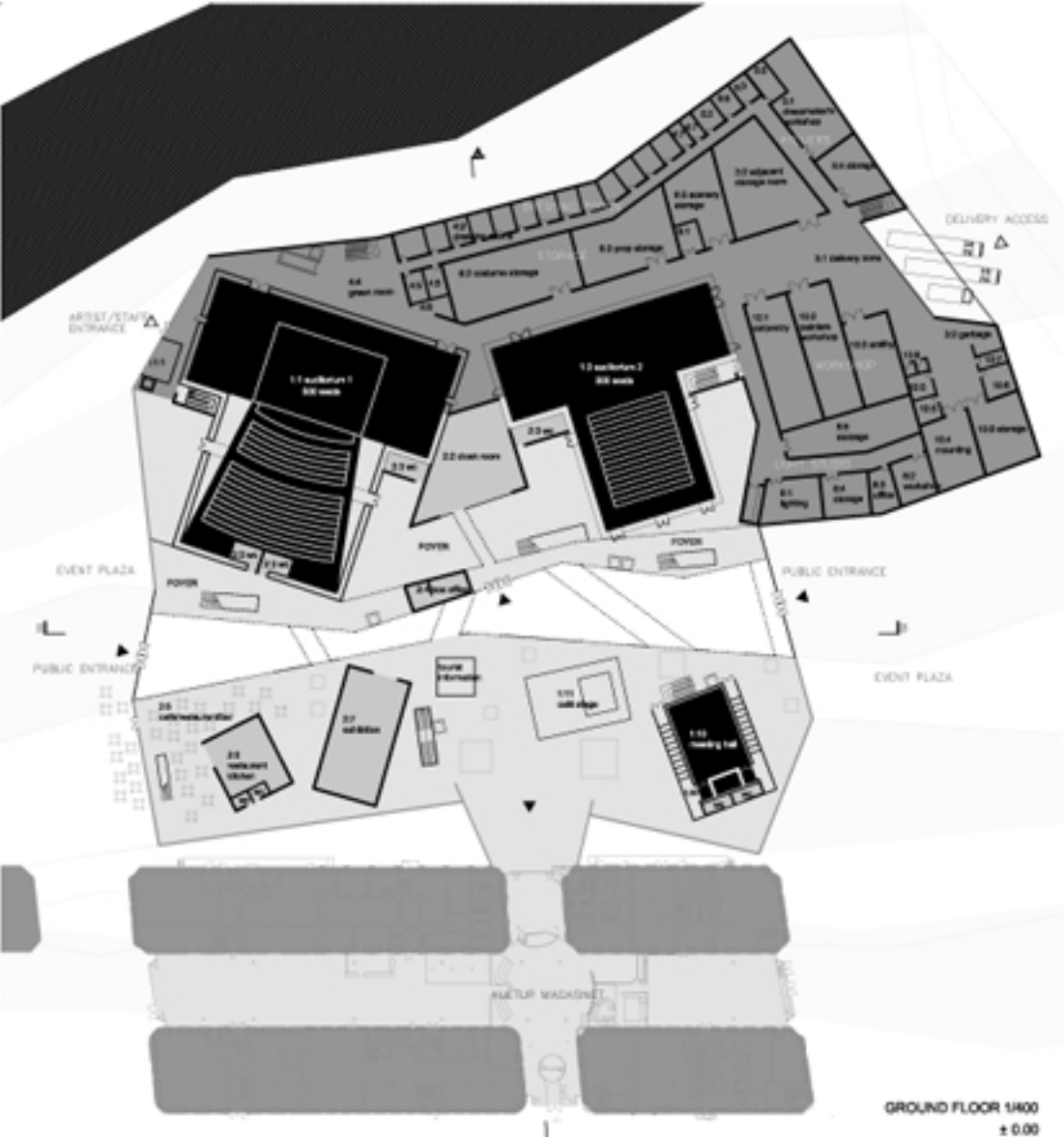
Sustainability

The project is conceived with a high ambition in terms of savings. The aim is to create a sustainable architecture through a flexible, robust and open structure.

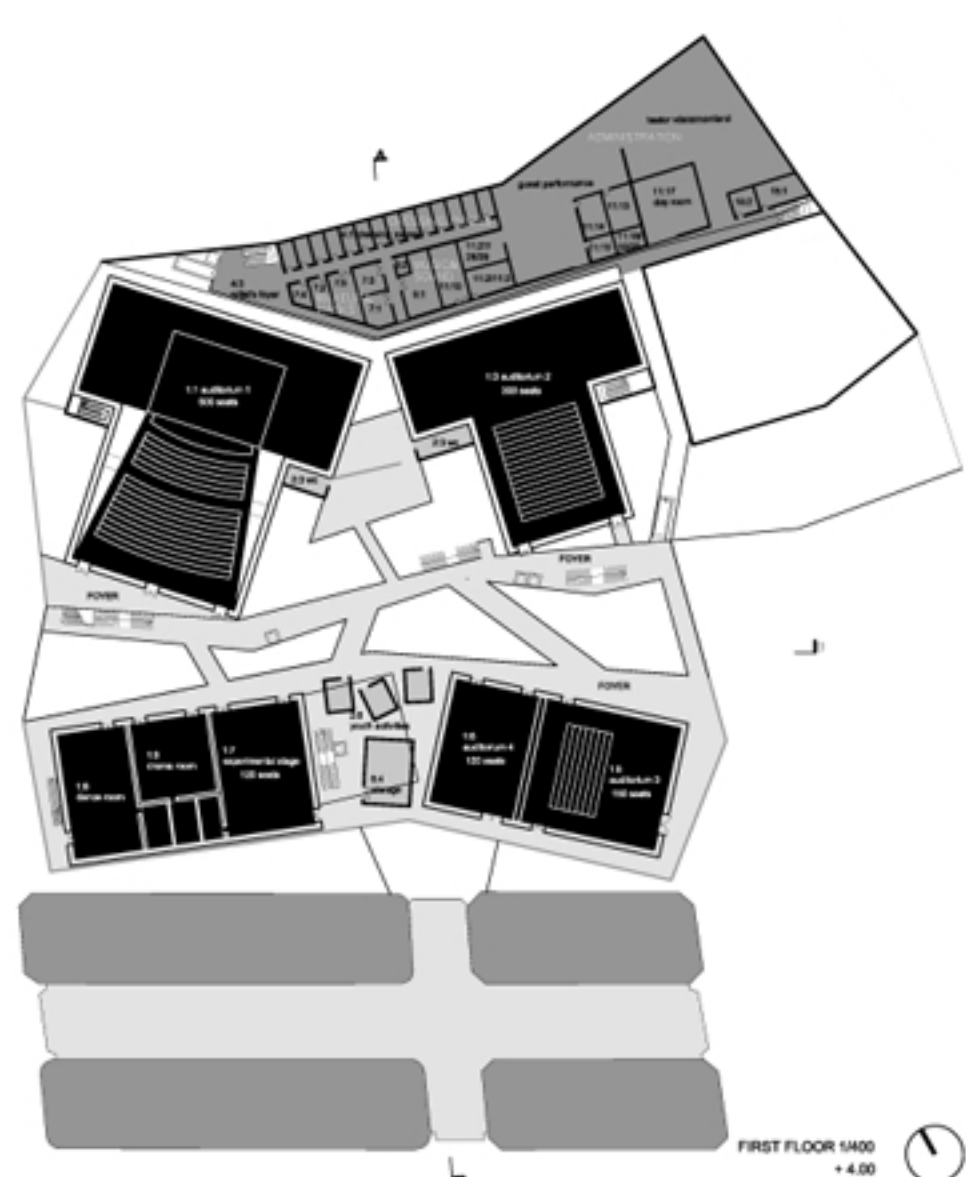
Energy efficiency aimed to reduce greenhouse gas emission and reduce energy consumption is obtained in our project through several approaches:

- Cooling through passive climate control technology: natural ventilation is used whenever, the double heights are used for this purpose to create natural air flow.
- The possibility to use earth energy, through heat pumps, for heating in winter and cooling in summer will be developed.
- Using exposed concrete floors, ceilings and walls to increase the inertia of the structure and store/absorb energy.
- Use of natural lighting - the architectural "tools" in the volume makes it possible to bring light to all spaces. All major spaces are placed in direct contact with the exterior envelope, or lit from roof.
- Use of sun shading devices, in the form of perforated glass and textile screens on exposed facades, reducing heat loads for cooling in warm periods.
- Use of triple glazing with high insulation value (U=0.80W/m²K). The energy necessary for heating is reduced due to the insulating performance of the glass.
- Use of optimized technological devices, with high energetic efficiency.
- Use of specific heating, cooling and lighting in all volumes.

• All technical devices and networks are easily accessible for maintenance and protection.



GROUND FLOOR 1400
± 0.00



FIRST FLOOR 1400
+ 4.00

- Structure**
- „The infrastructure and space located underground (parking and technical spaces under the stage) are constructed in concrete with adapted treatment to respond to the proximity of the water table.
 - „The foundations and structure will be studied carefully to avoid vibration in the auditoriums due to the proximity of the highway.
 - „The primary structure is constructed in iron and concrete. Columns are in iron.
 - „The walls of the auditoriums are in concrete to ensure excellent insulation.
 - „The “beams” of the auditoriums give stability and serve for cross bracing the structure.
 - „The roof beams are in steel to cover large spans with outspanned sections.
 - „The floors are in cast or precast concrete without concrete.

- Finishes**
- „The theater frames are developed with the aim of maximum resource efficiency through the use of mixed materials and techniques with long lifespan. The use of recycled materials will also be studied.
 - „Interior spaces are treated with robust finishes: floors are in concrete or industrial stone, walls in concrete or high quality plaster panels.
 - „The structure is generally exposed, depending on the acoustic needs performed or full metal panels are used for theater seating and walls.
 - „All interior partition walls are easily connected with minimal intervention.
 - „To obtain maximum interior brightness between the different spaces, glass theater partitions are used as much as possible. Full partition walls are used when this is not possible in terms of acoustic and functional needs.
 - „The use of homogeneity and continuity creates healthy life maintenance.

Roofscape

„The building is treated in partly located in the “shadow” of the existing Kultur Magasinet. Avoiding direct sunlight from the south has major advantages: it reduces the heat in the building and gives good working conditions for artistic disciplines.

