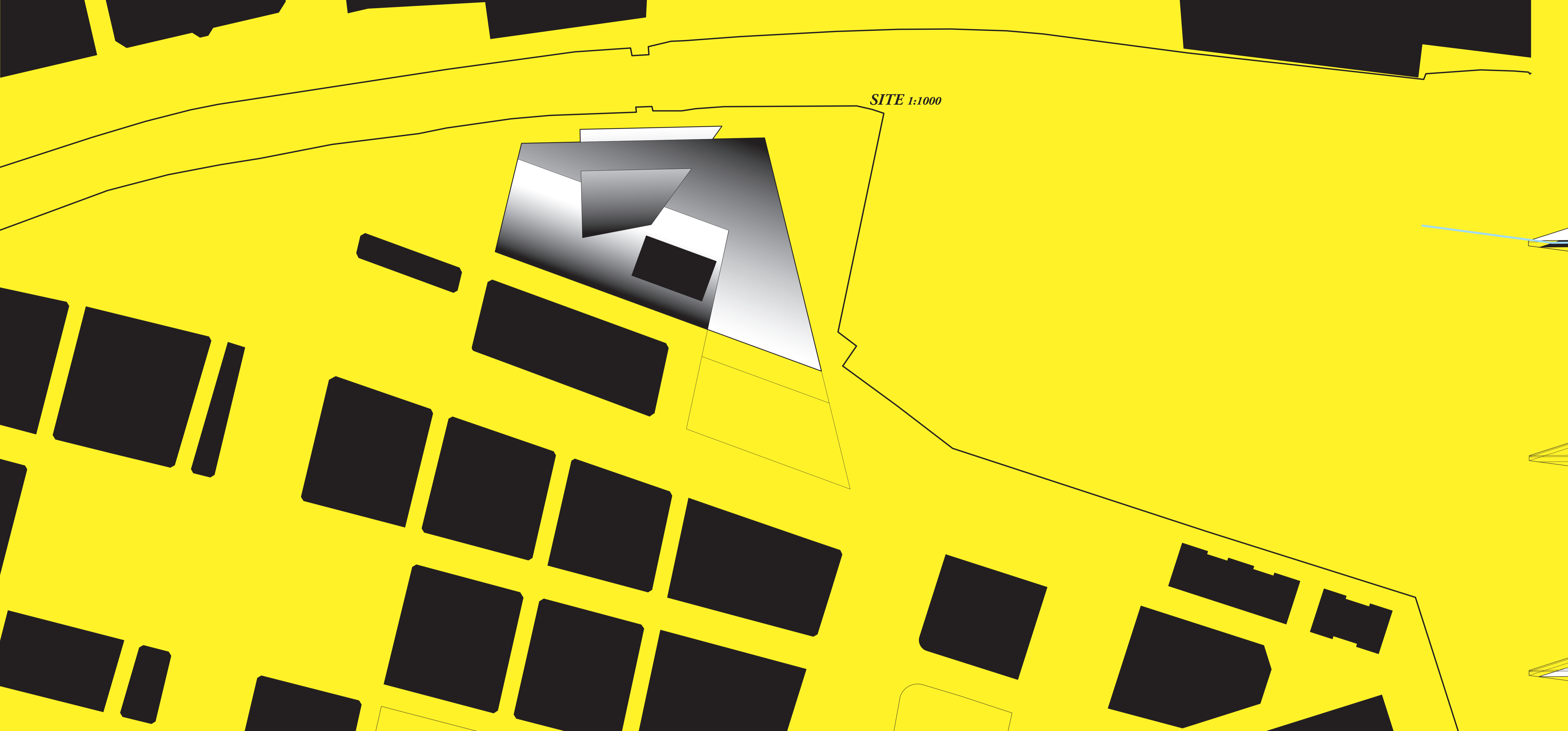


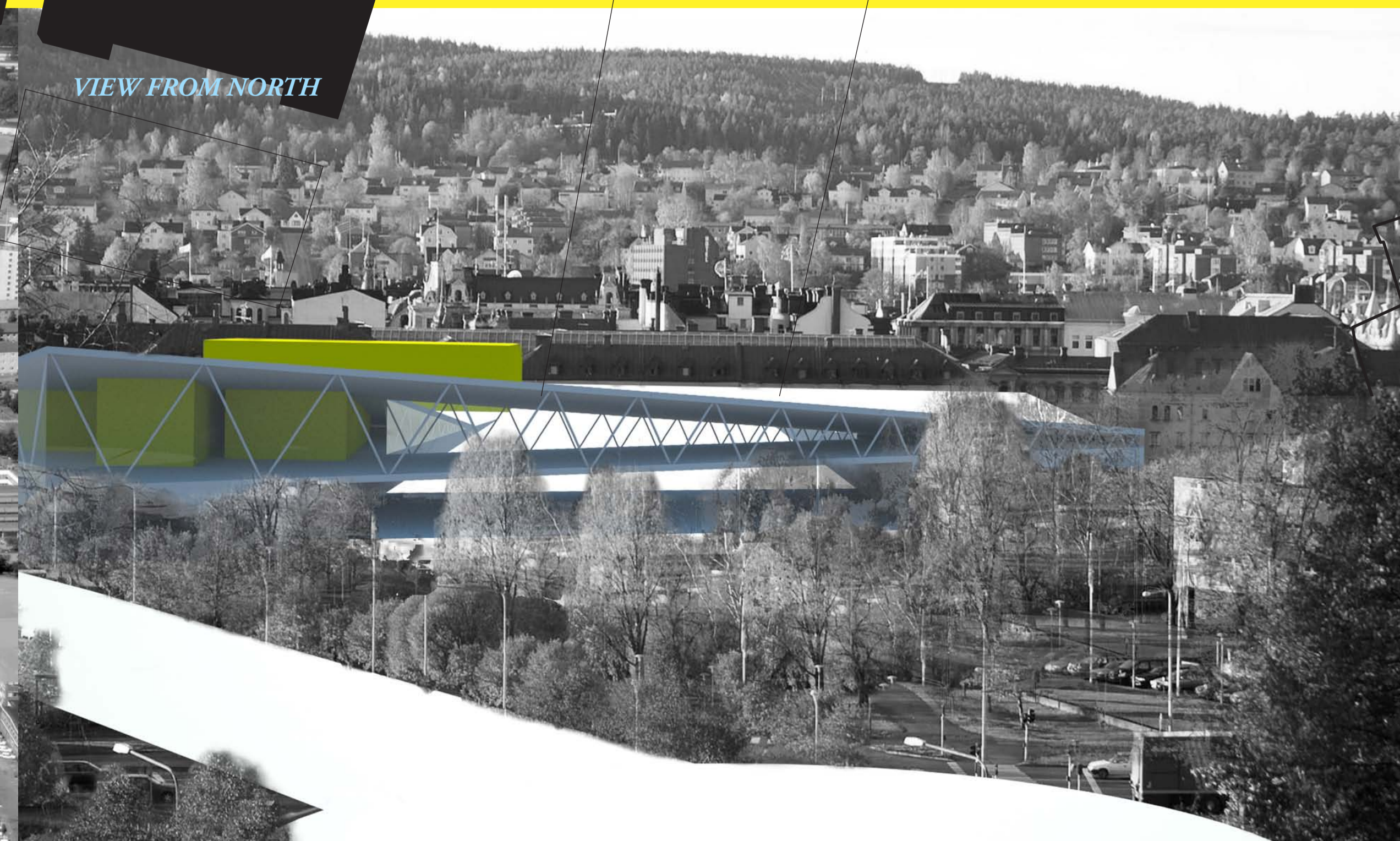
SITE 1:1000



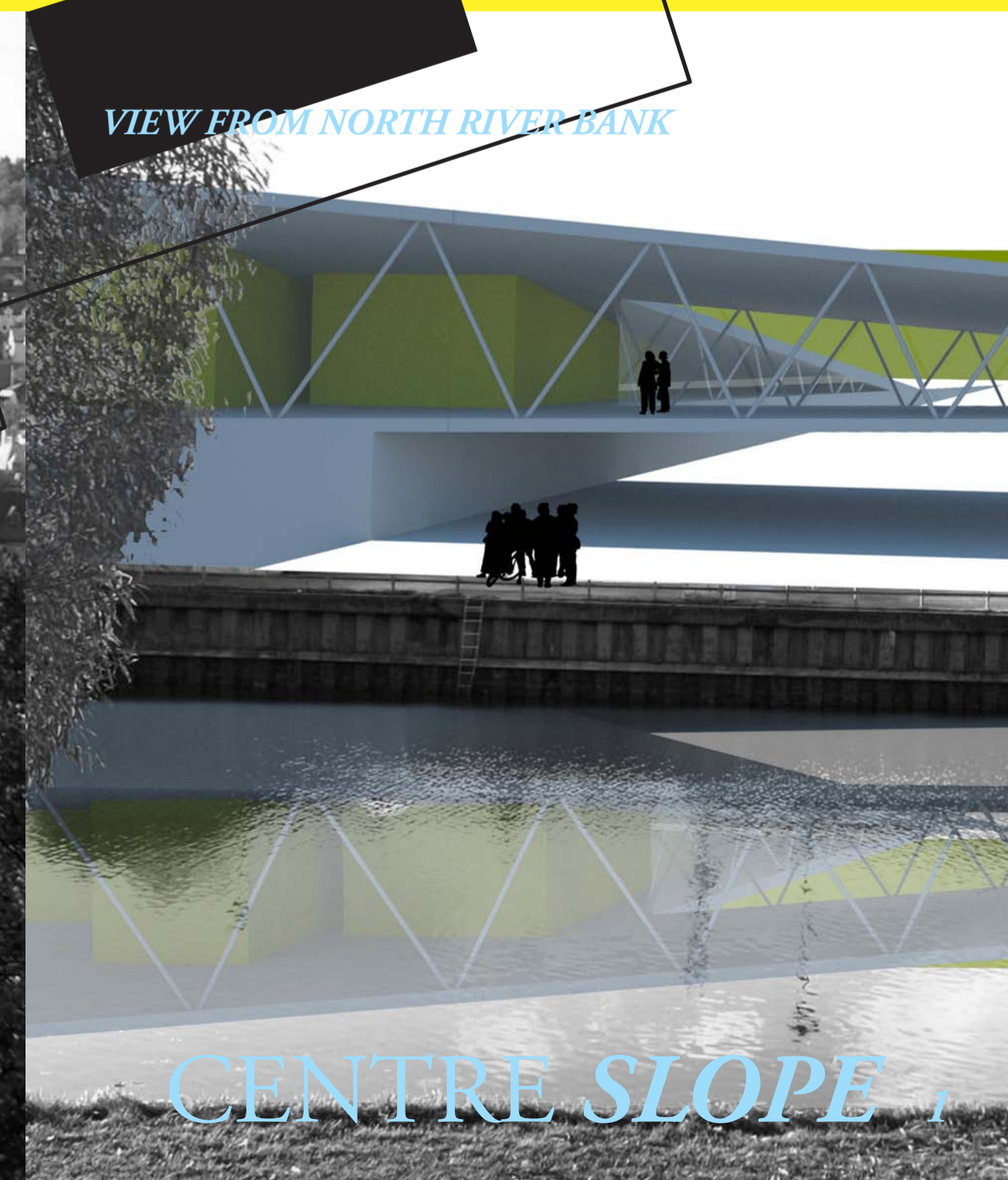
AERIAL VIEW FROM INNER HARBOUR



VIEW FROM NORTH



VIEW FROM NORTH RIVER BANK



CENTRE SLOPE

**PROJECT DESCRIPTION**

**GROUND LEVEL 2M 1:400**

Centre Slope provides a modern performing arts complex, accessible urban congregation spaces, and a strong dialogue with the adjacent Selangerdan river estuary to the people of the city of Sundsvall and the surrounding region. The extensive roof plaza acts as a central unifying element for the river to the north and the street level activity related to the Kulturmagasinet to the south and the future commercial developments to the west. The inclined ground level plaza strengthens the relationships of the roof plaza and adjacent developments by addressing the roof geometries at a welcoming and commonly occupied level.

The undulating roof over Centre Slope is designed to be an inhabited terrace thereby at once creating stimulating gathering spaces as well as largely informing the geometries of the internal circulation spaces. The roof geometry is efficient in its enclosure of space yet playful as an elevated occupiable surface of angled planes. Exploring the roof terrace provides the visitor with diverse and uninhibited views of Sundsvall with the north facing roof inclines being sympathetic to the river and the south facing slopes addressing the historic gridiron Stone Town.

The interior of Centre Slope is comprised of a ground level, mezzanine and upper level. The main entrance occurs at the southeast corner of the ground level and provides virtually immediate access to the elevated levels by way of ramped and stepped surfaces. The three main stages are located at the ground level with additional access from the mezzanine level. The remaining performance spaces are located at the upper level.

The Centre has two significant foyer spaces at the ground level, the grand foyer at the main entrance and the more intimate foyer beneath the north roof slope that is programmatically related to activities in the ground level stages. The upper level of the Centre contains an exhibition space and public viewing gallery that affords vast views of the river in an elevated and conditioned environment, in addition to specific performance spaces. The back-of-house spaces are distributed over all three levels. There is one basement level that is primarily populated with parking along with storage and the ground level stage spaces.

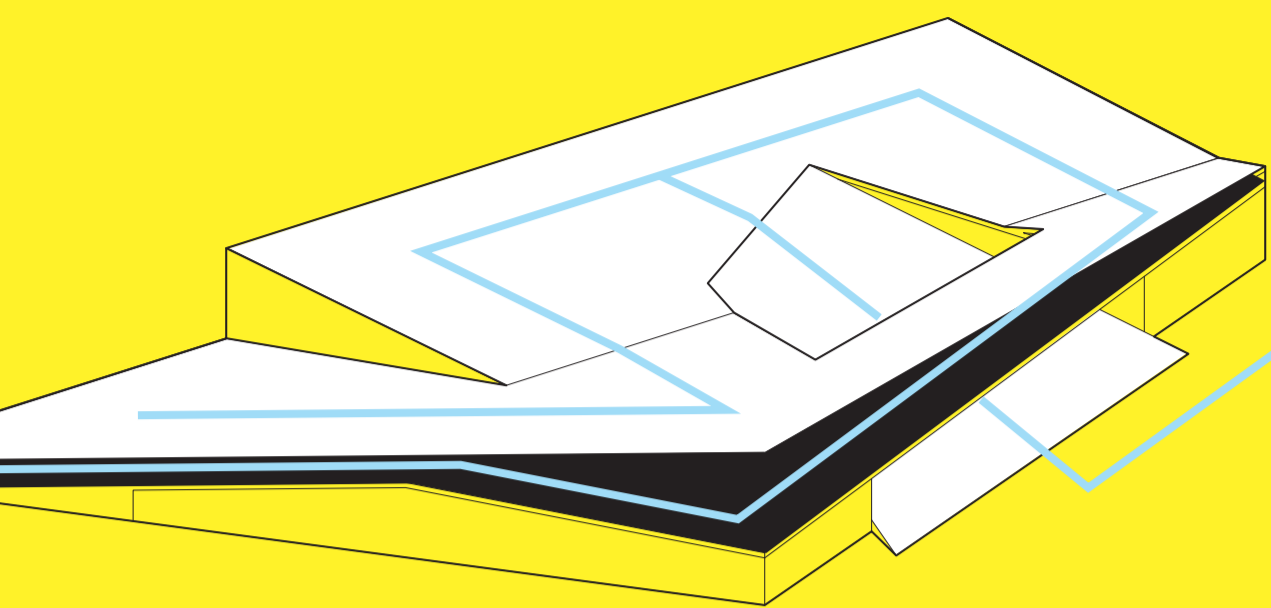
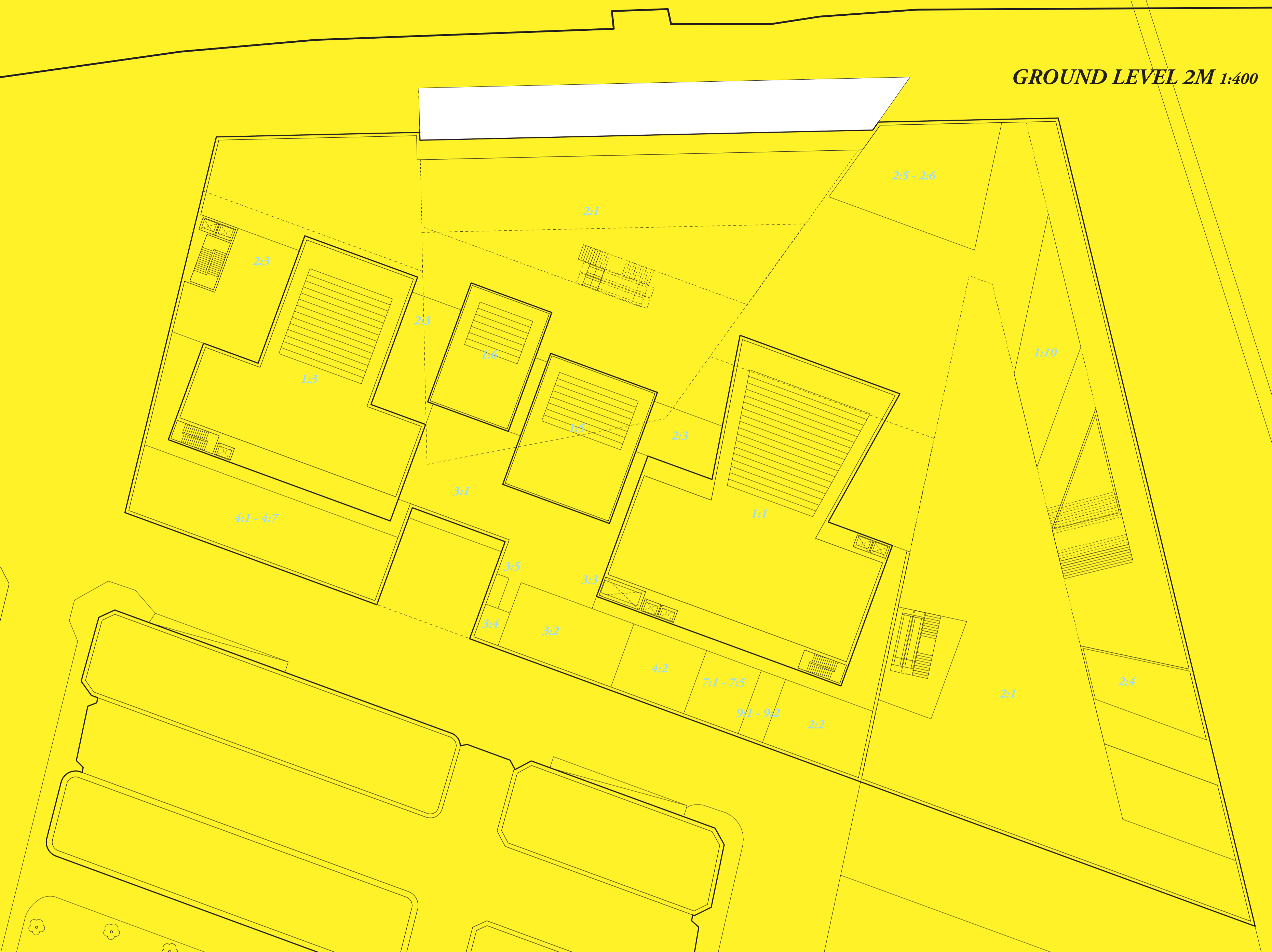
The principle structural scheme for the superstructure of Centre Slope is concrete filled metal deck diaphragms spanning to steel beams or trusses supported by steel columns. The use of structural steel for the primary superstructure framing results in a lighter building structure, thereby reducing structural framing space requirements as well as foundation demands. Steel is also a largely recycled material; typically 95% of steel content is recycled.

Lateral stability for the building is achieved with concrete walls around the theaters and perimeter steel truss moment frames. Concrete walls around the theaters also improve the acoustic separation of the performance spaces and provide attachment versatility for the various theater structures such as the gridiron, catwalks and galleries.

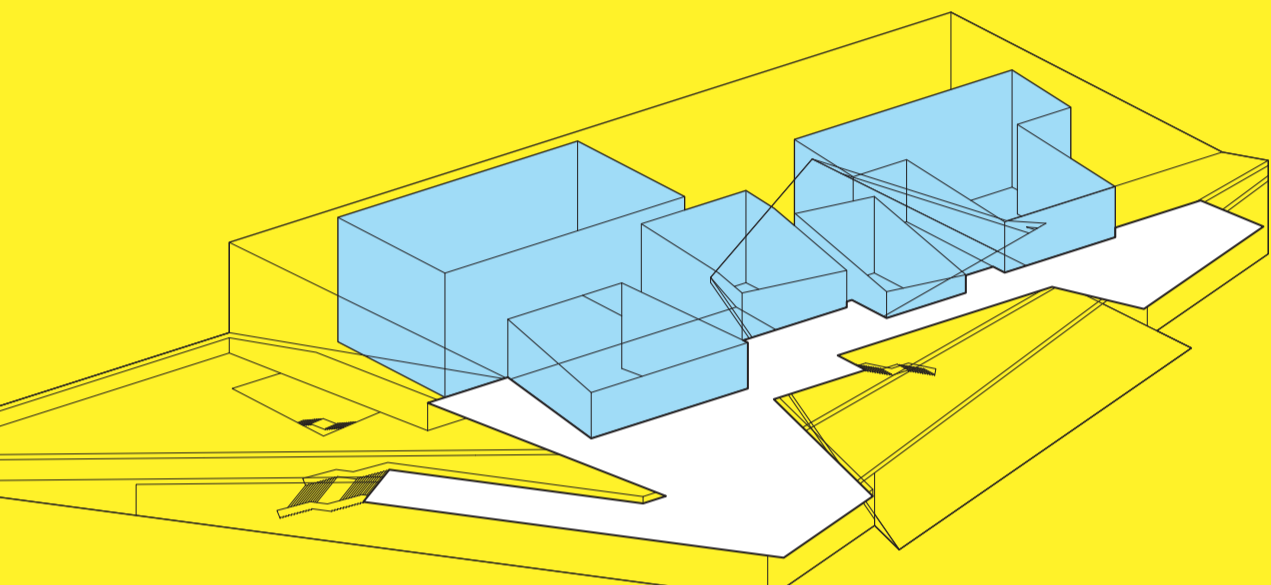
The substructure of Centre Slope consists of a single level of subterranean parking and theater basements as well as tunnel walkways to the adjacent Kulturmagasinet. The basement is kept to one level in order to minimize the excavation and construction below the high site water table. Minimizing the depth of the basement also reduces the hydrostatic pressure exerted on the bottom and sides of the basement, which will decrease dewatering and temporary stability issues while the superstructure is being built above.

The roof of the parking garage is the floor of the performing arts building above. The structure is supported on a consistent 8m grid of concrete columns, which maximizes the useable parking spaces while providing efficient distances for the transfer structures beneath the performing arts building. The perimeter of the parking garage is comprised of concrete retaining walls. The tunnel walkways consist of concrete flat slabs and retaining walls.

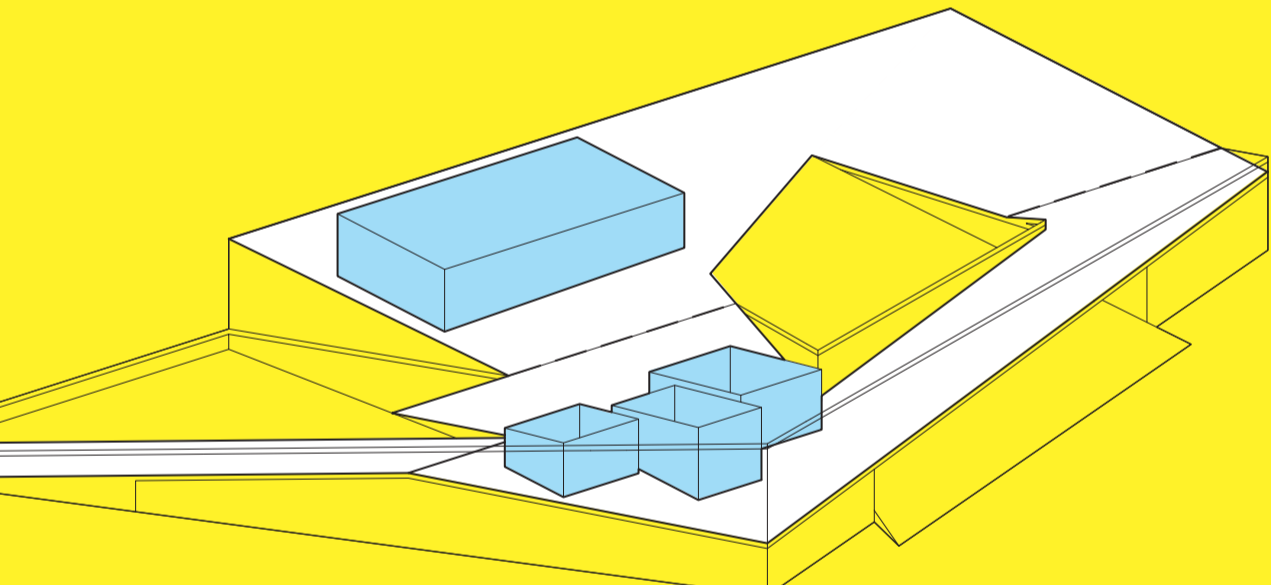
The floor of the parking garage, the foundation structure, will be a suspended concrete slab spanning between grade beams and piles located beneath the columns and perimeter retaining walls. The piles will distribute the column loads to the soil and resist uplift from hydrostatic pressure beneath the slab with skin friction.



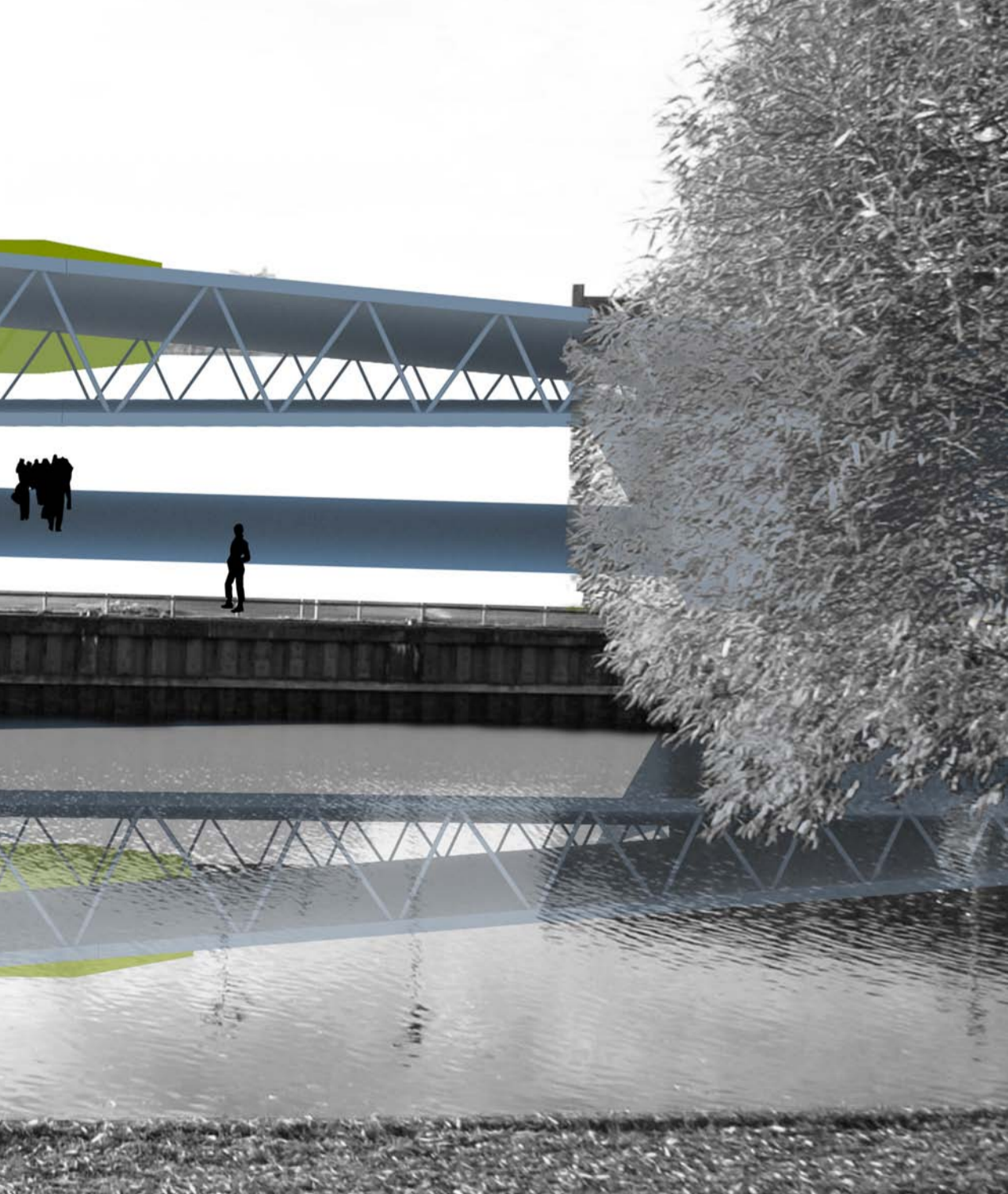
ACCESS TO ROOF PLAZA



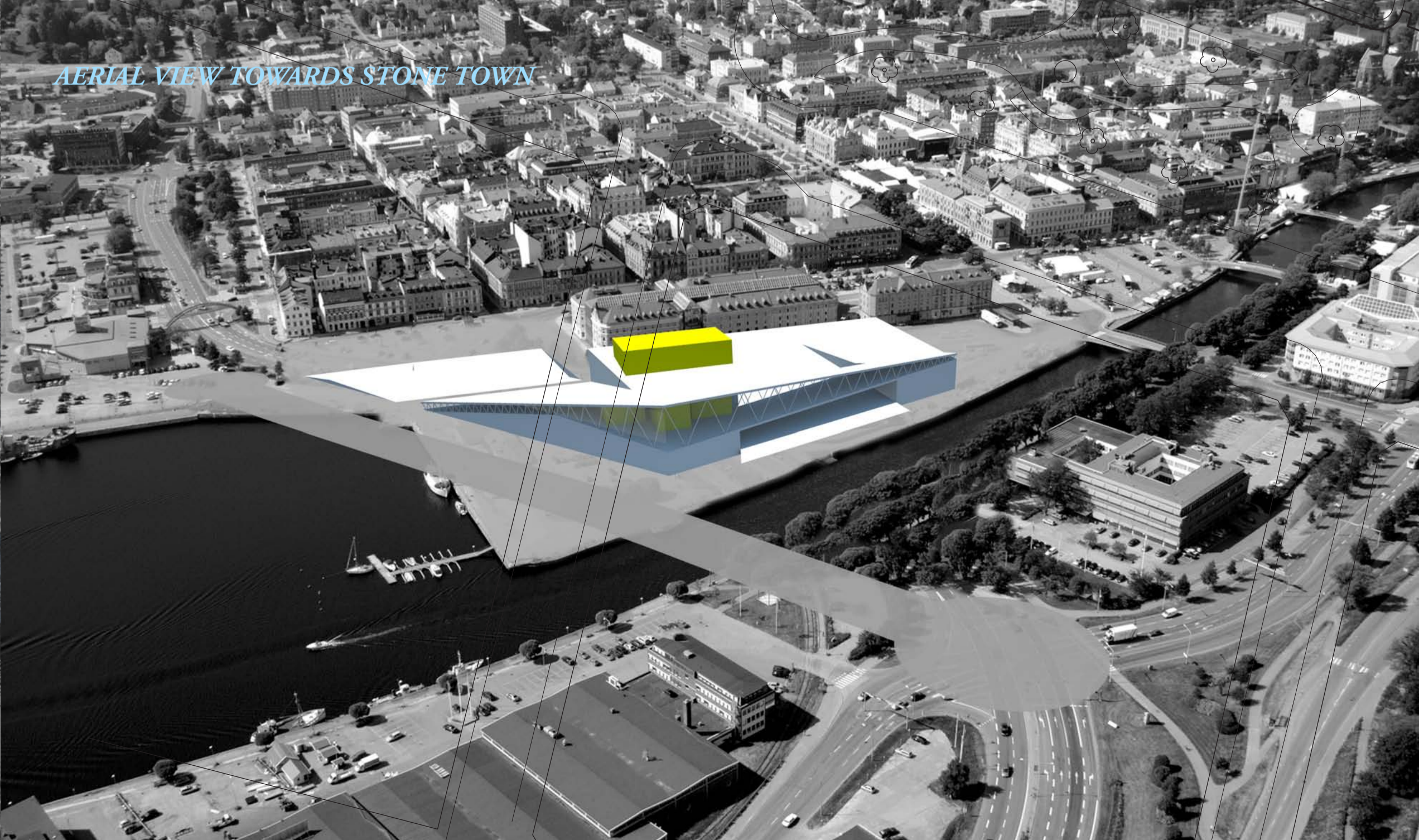
LARGE STAGES @ MEZZANINE



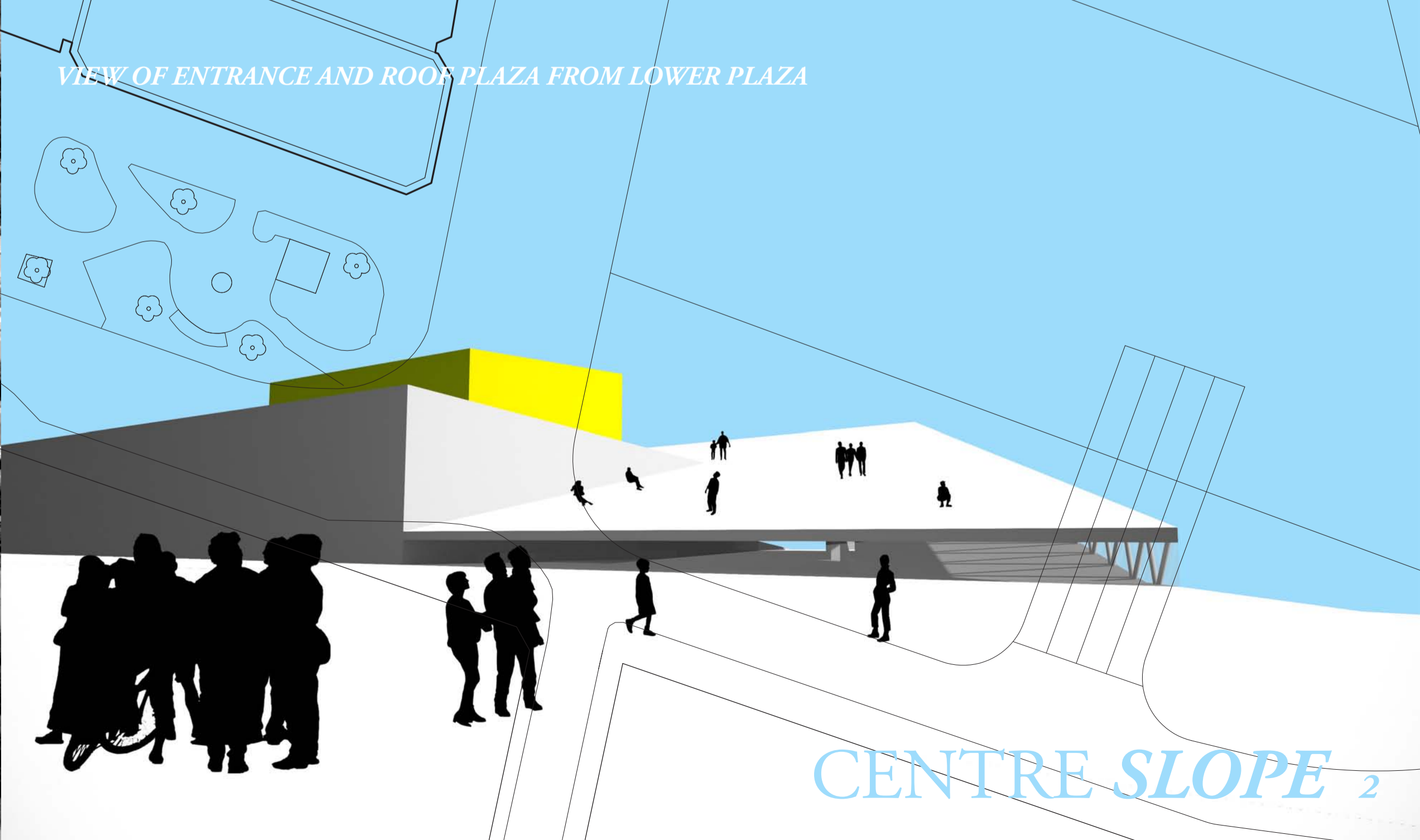
SMALL STAGES AND ROOF @ UPPER LEVEL



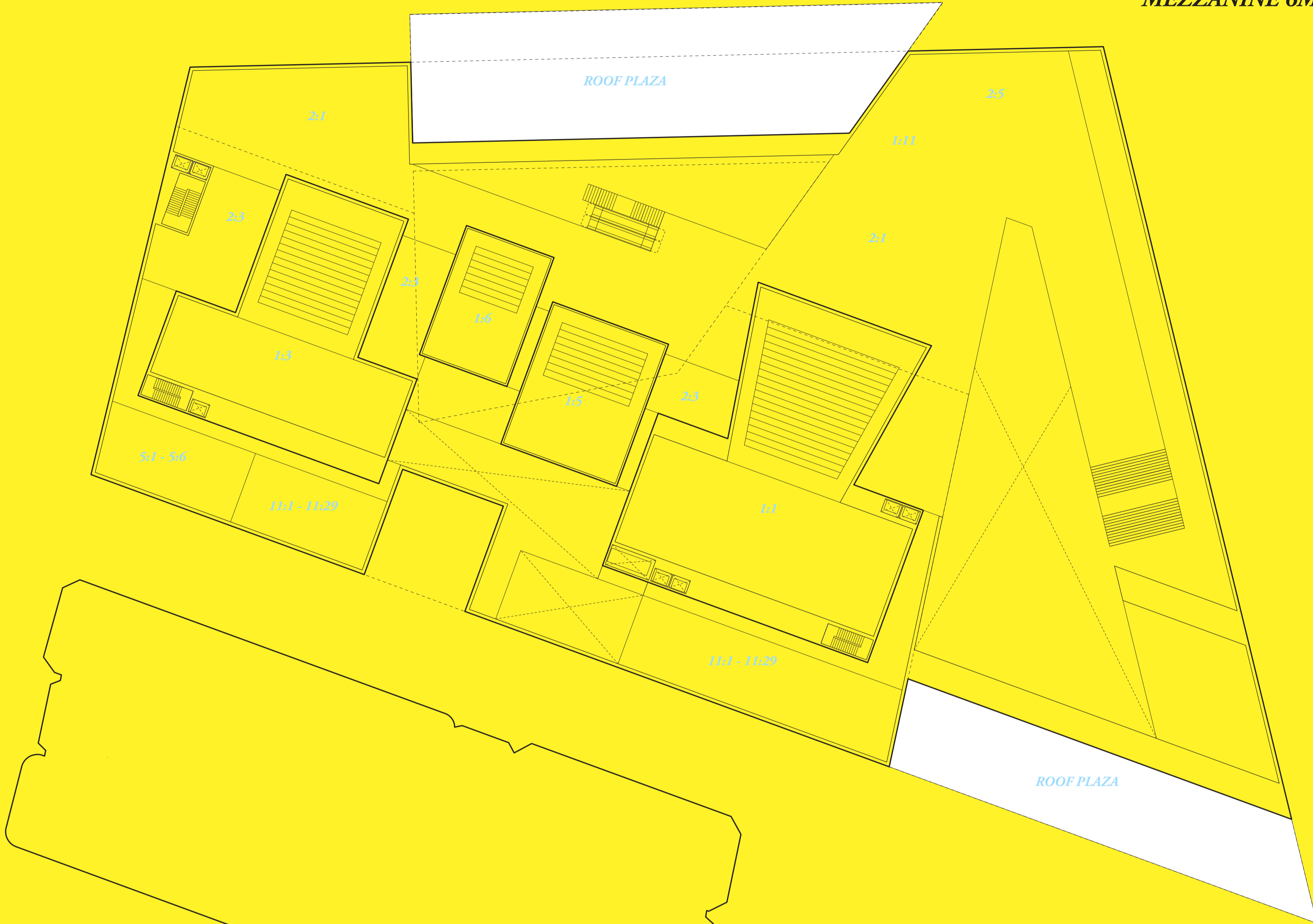
AERIAL VIEW TOWARDS STONE TOWN



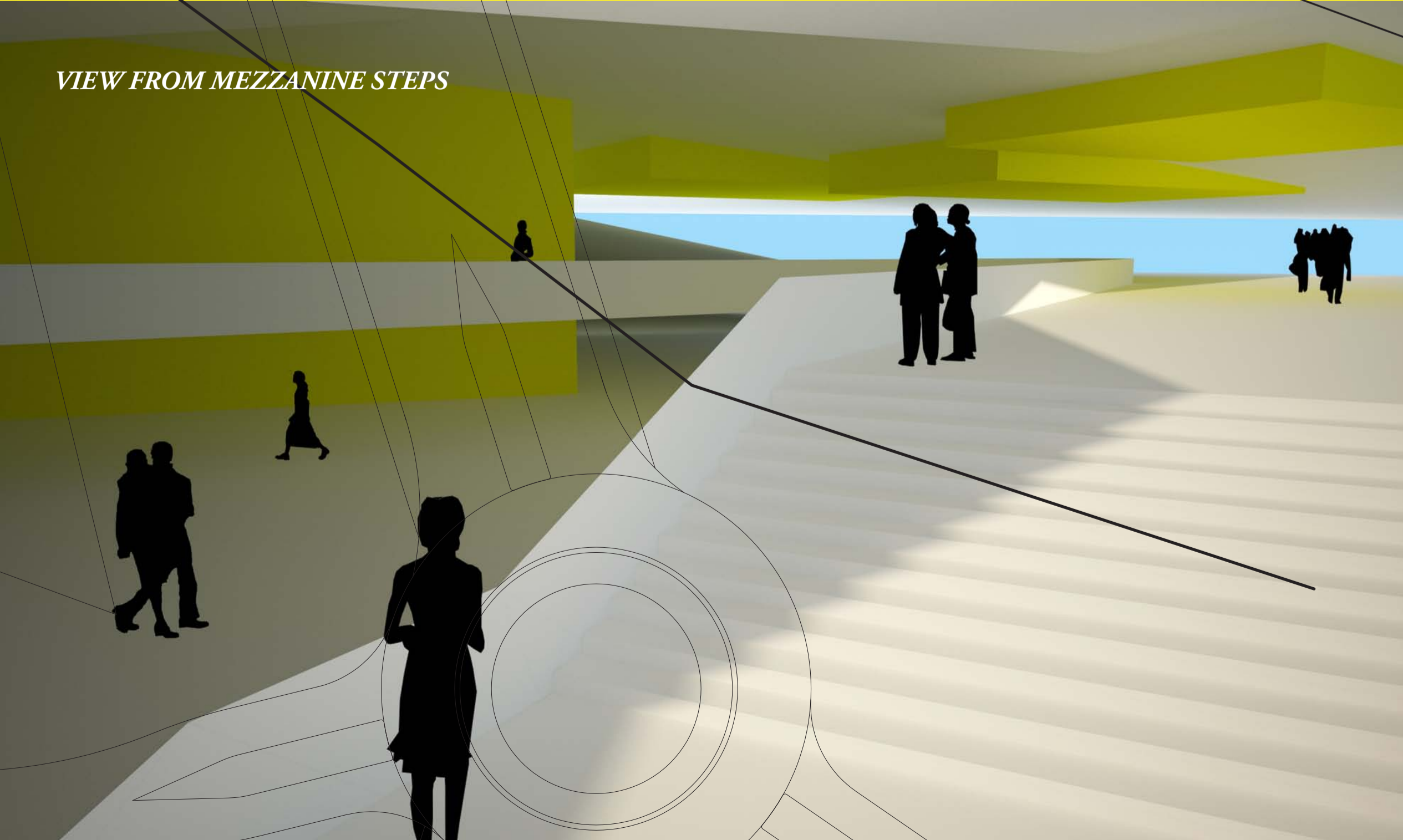
VIEW OF ENTRANCE AND ROOF PLAZA FROM LOWER PLAZA



MEZZANINE 6M



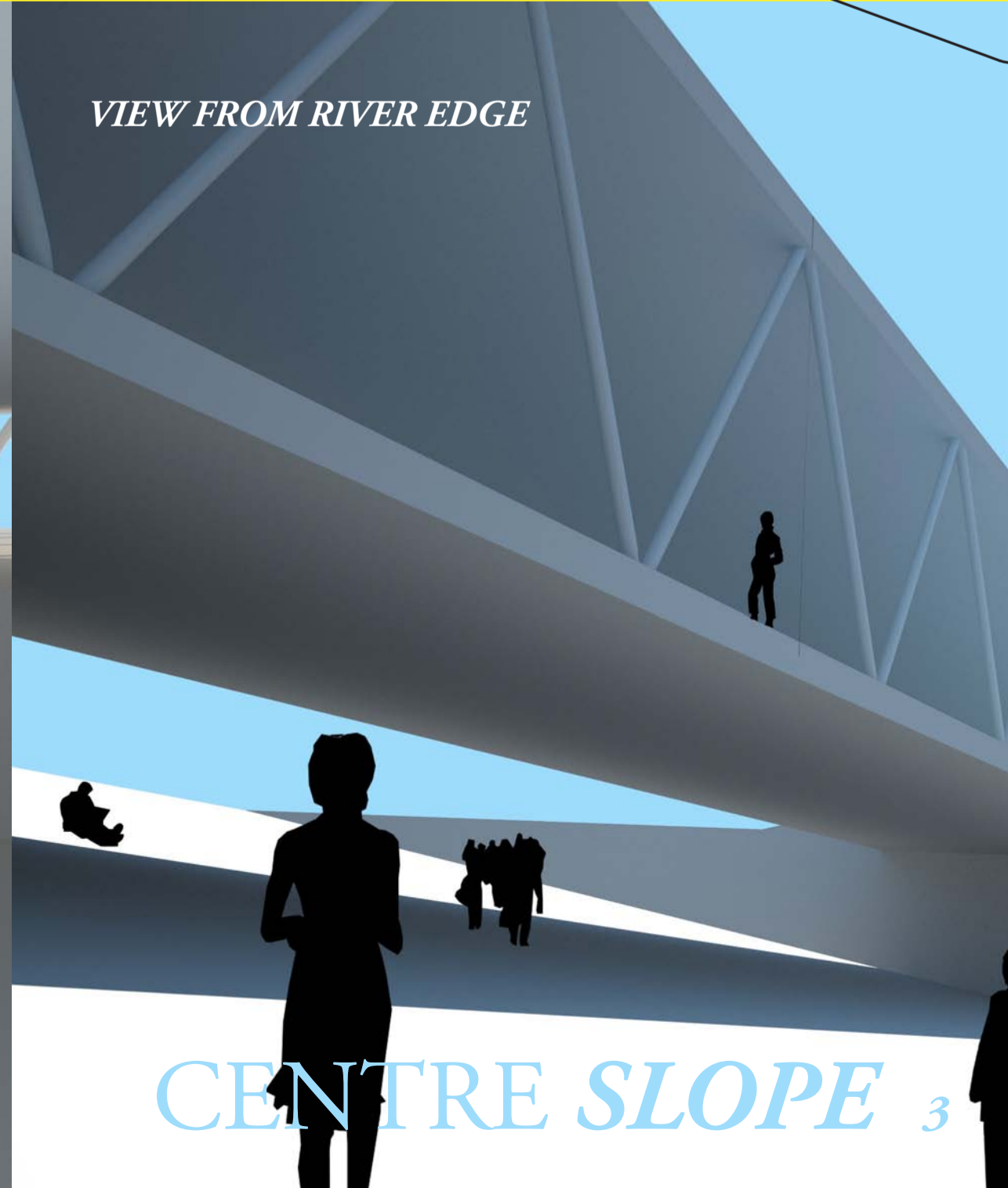
VIEW FROM MEZZANINE STEPS



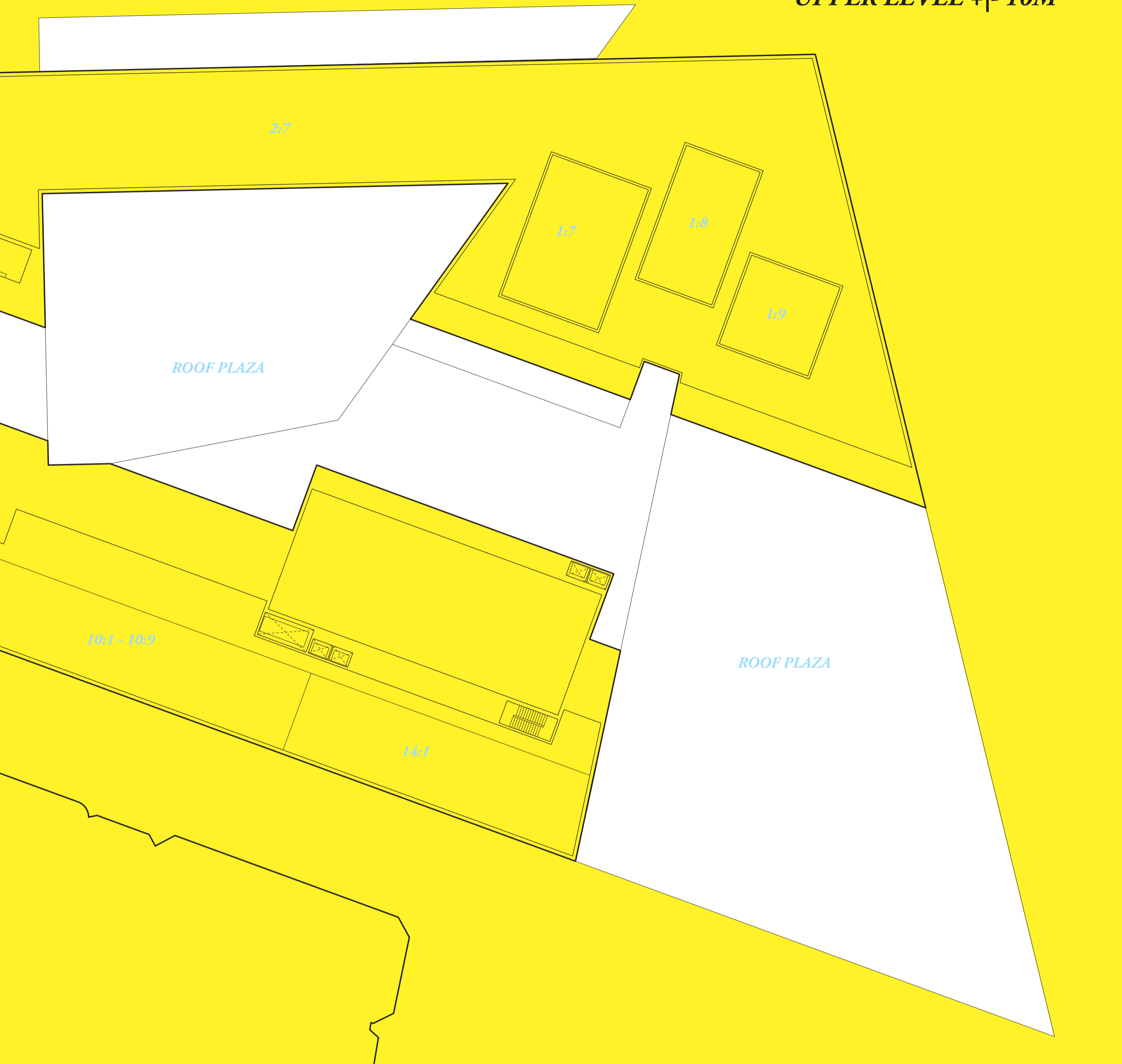
VIEW FROM MAIN ENTRY FOYER



VIEW FROM RIVER EDGE



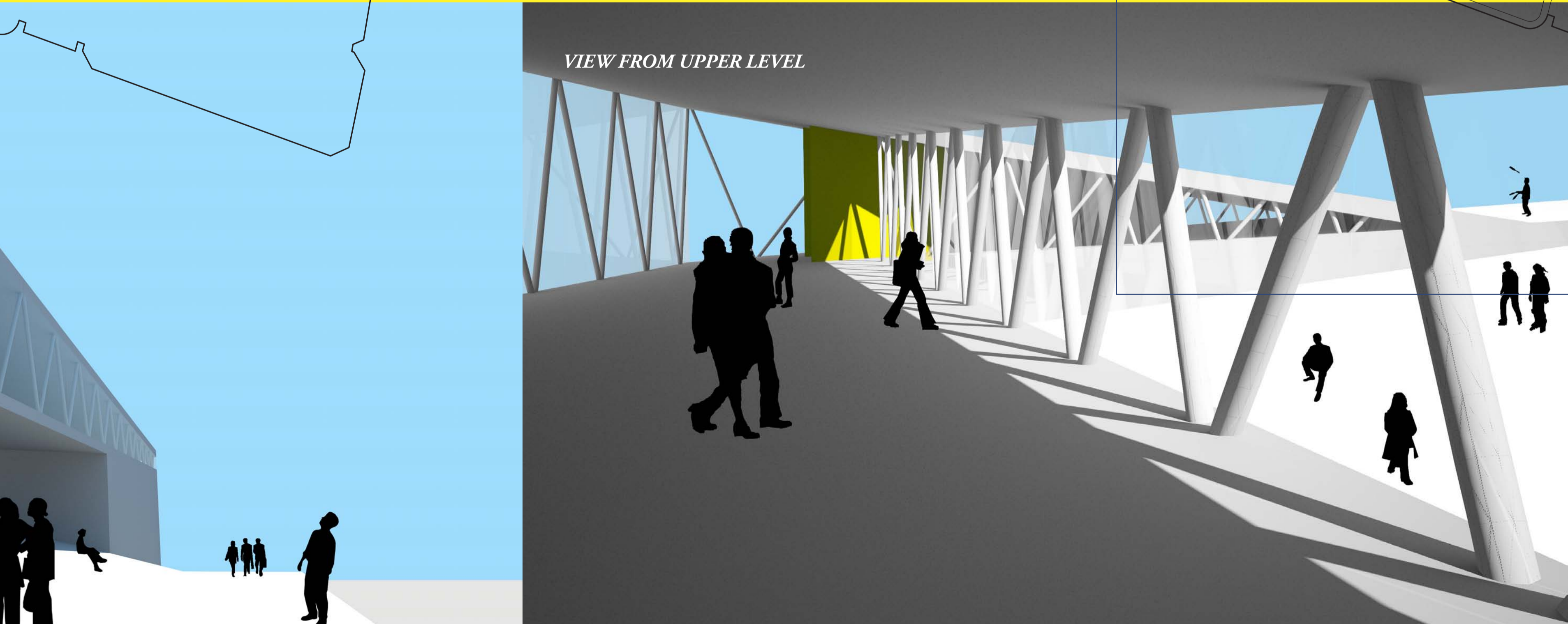
UPPER LEVEL +/- 10M



BASEMENT LEVEL -1M



VIEW FROM UPPER LEVEL



VIEW FROM ROOF PLAZA

