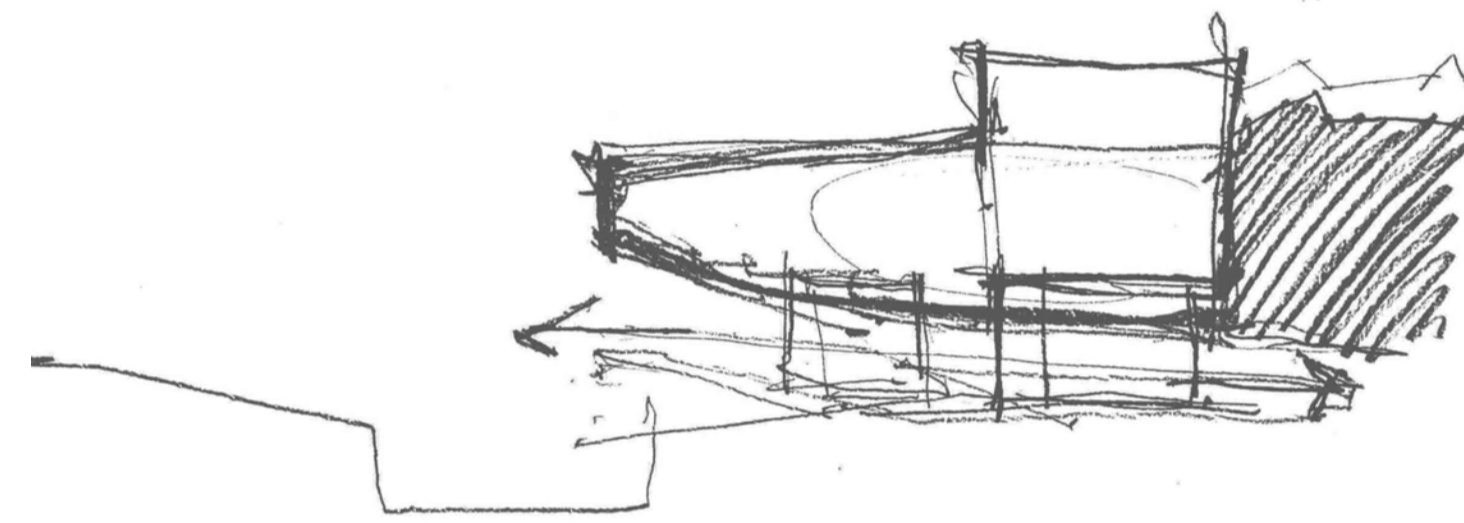
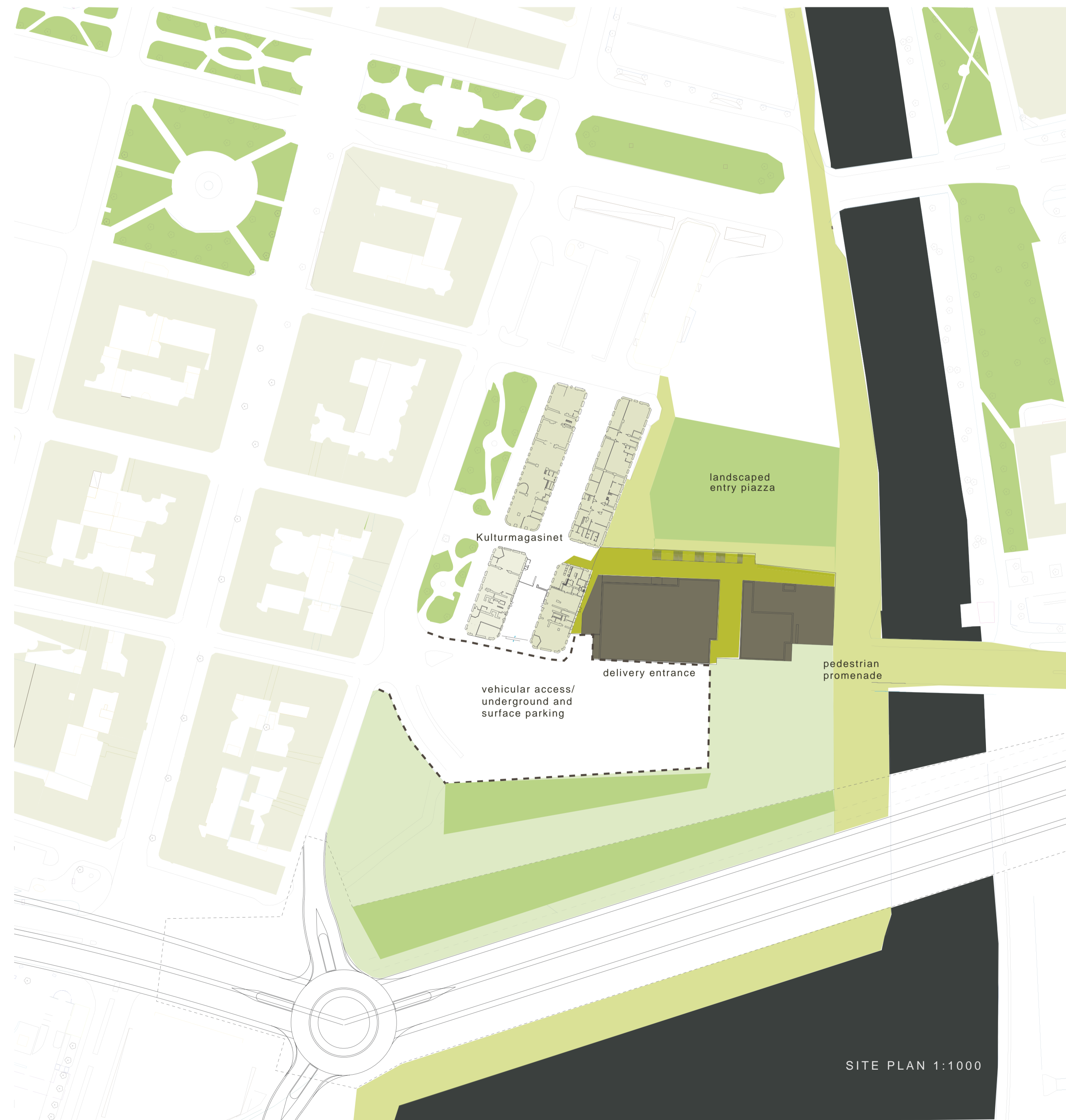




ARIAL VIEW



VIEW FROM ENTRY LOBBY TOWARDS RIVER

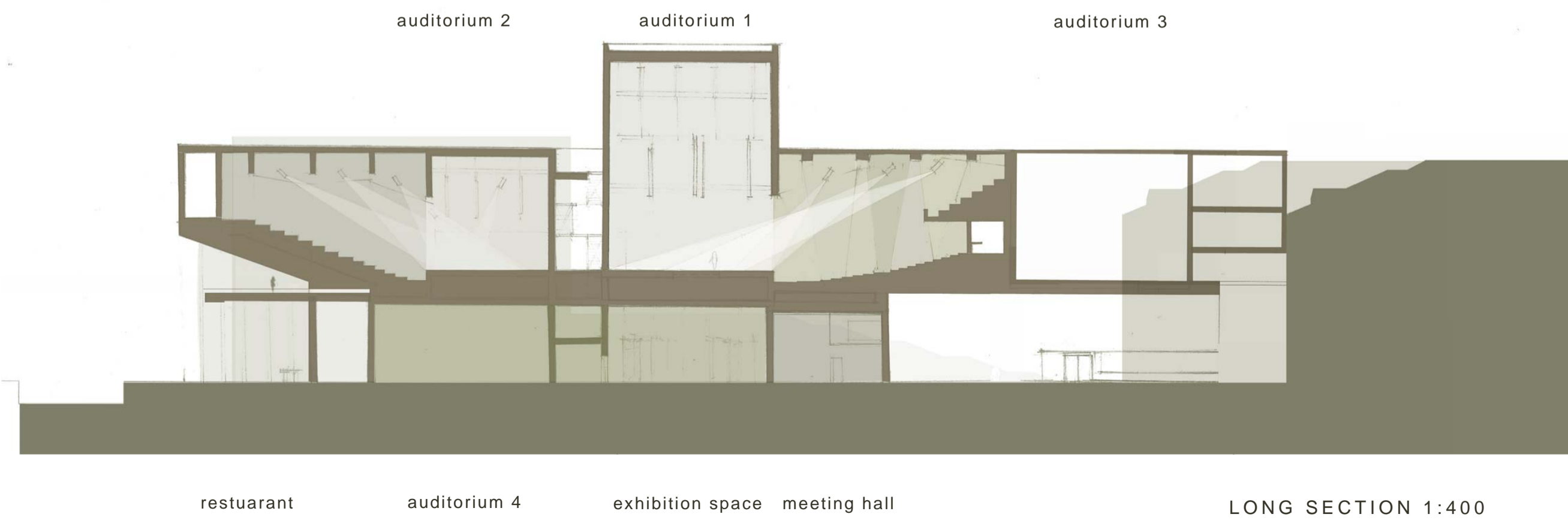
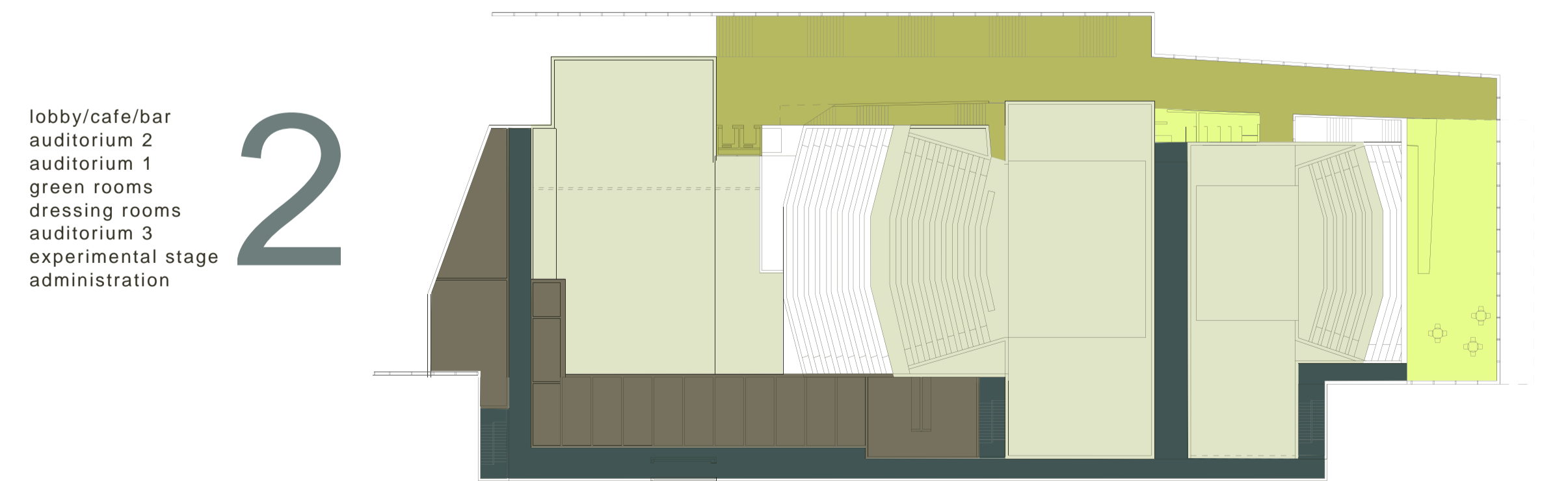
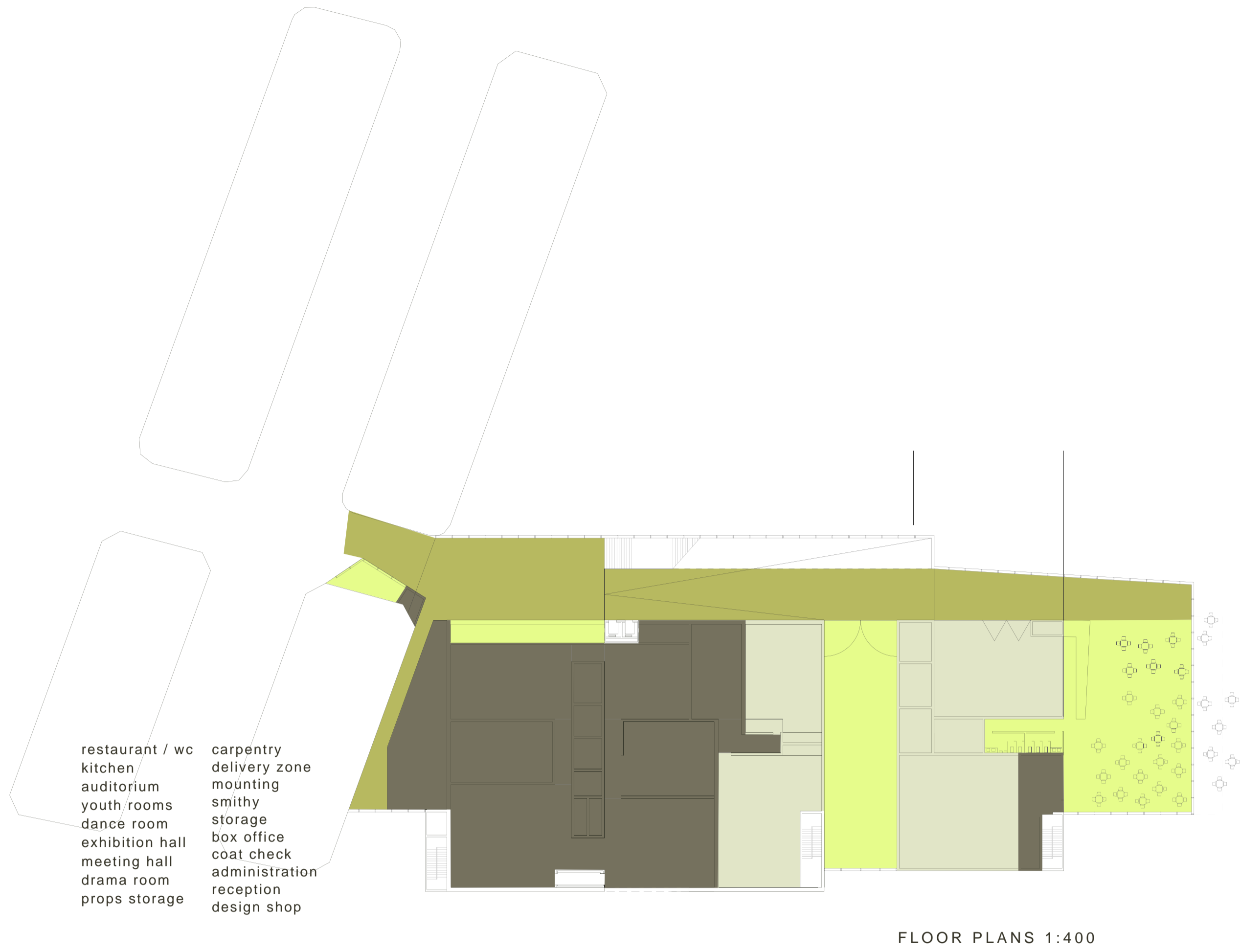
The BOW design for a new arts centre/theatre building in Sundsvall lifts the main theatre spaces up off the ground floor leaving space for open workshops and community spaces.

The building interacts with its harbour site, defining a promenade edge to the Fisktorget piazza. Like the end of a long pier or the bow of a ship, the design entices us further along, up the main stair to the theatres above, culminating in a shared lobby space that juts out above the harbour walk.

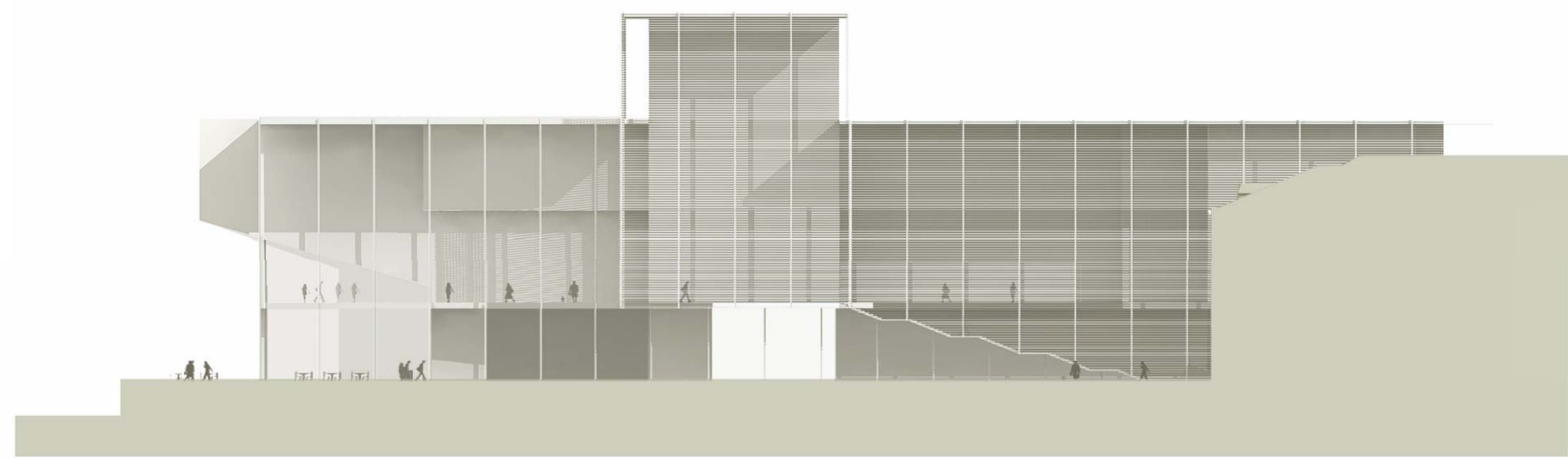
Like its neighbours, the main theatre spaces are clad in local stone, while its glazed components are wrapped in an anodized aluminum mesh cladding that acts as an iridescent screen mediating external views.



bow

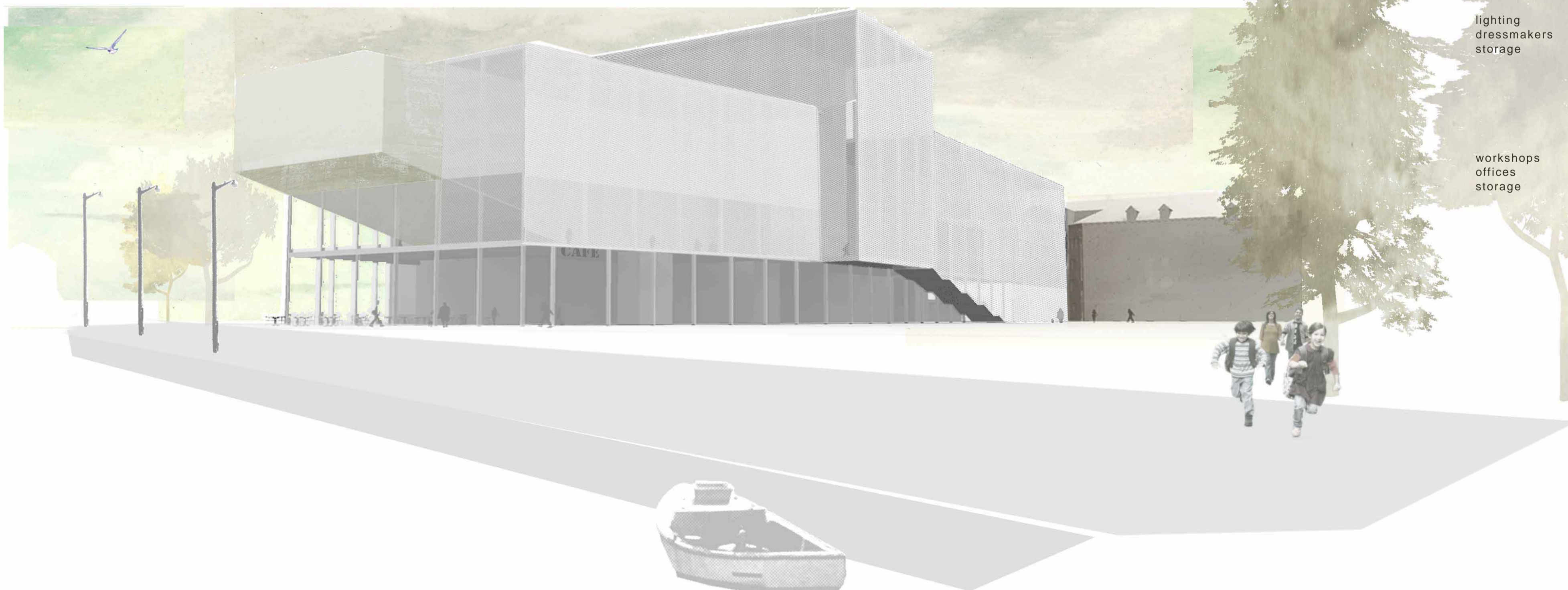


bow



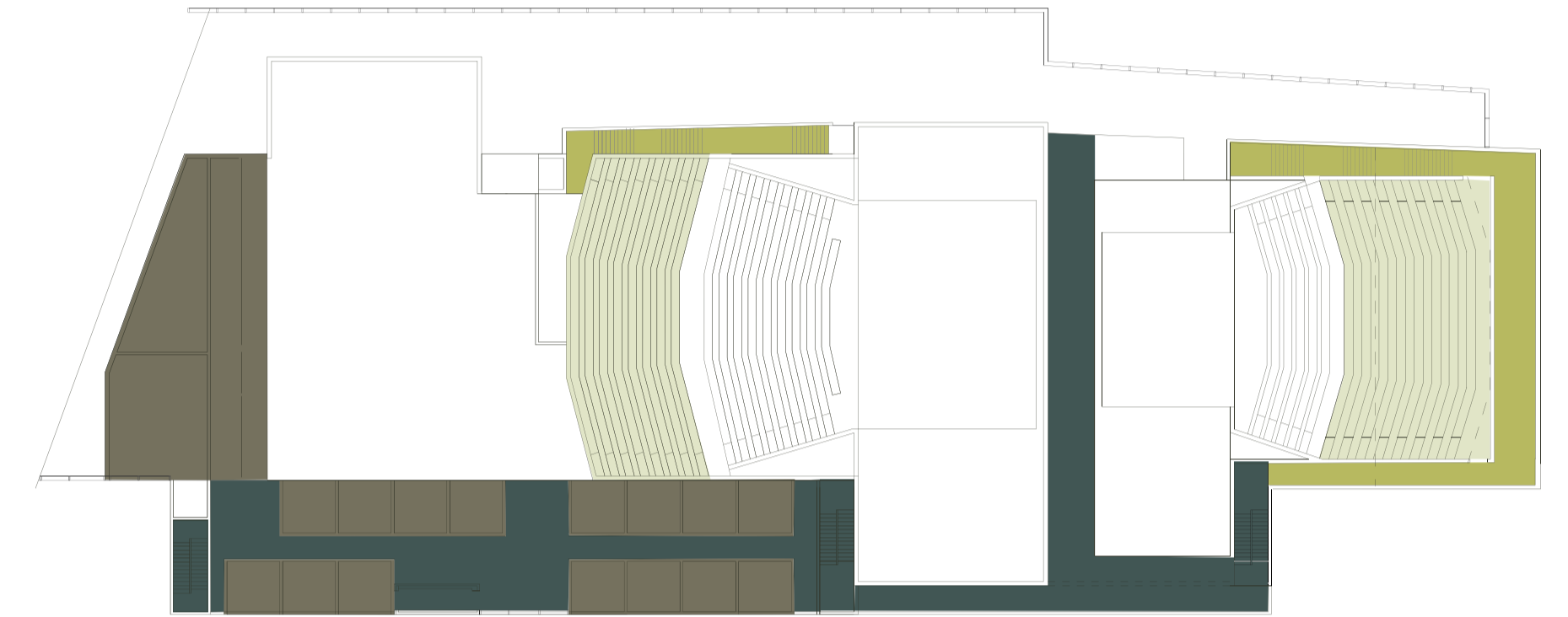
WEST ELEVATION 1:400

VIEW FROM FISKTORGET PIAZZA/PROMENADE



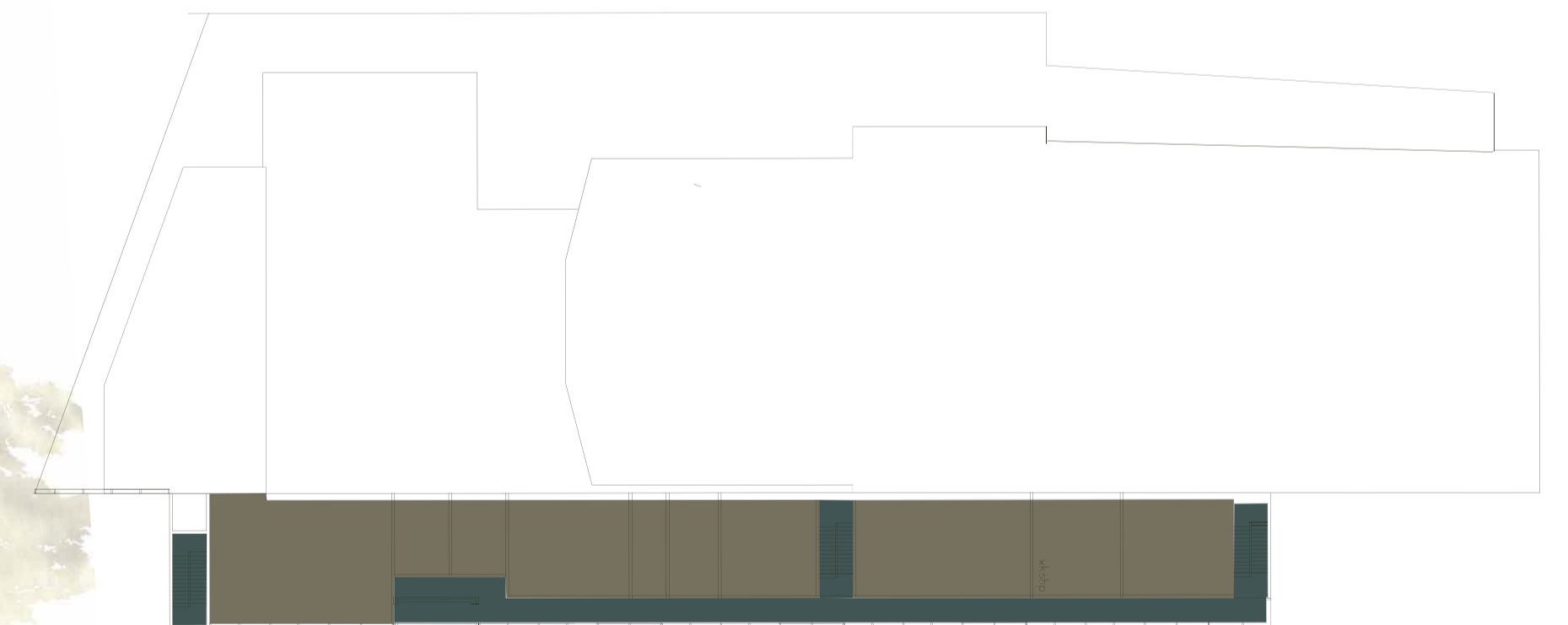
dressing rooms
green rooms
administration

3



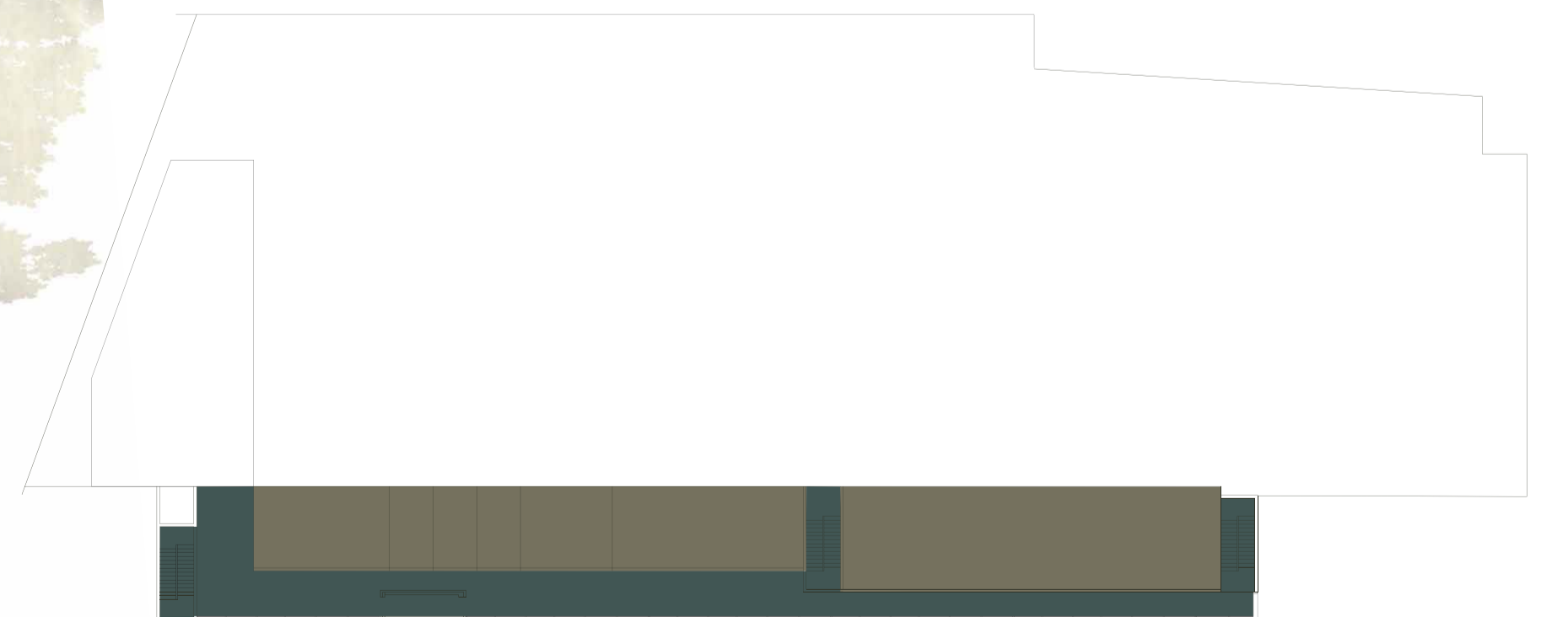
lighting
dressmakers
storage

4



workshops
offices
storage

5



bow