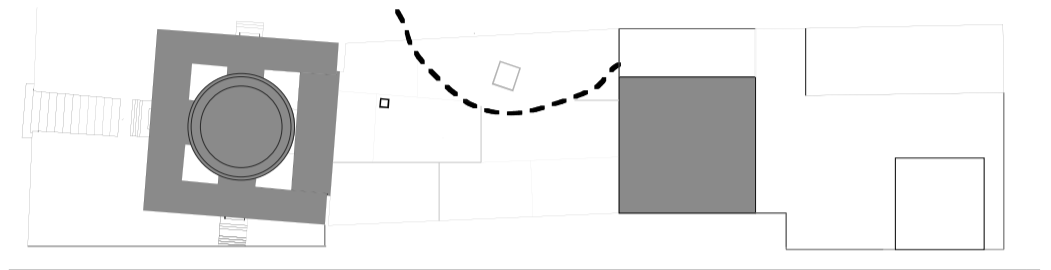


elevation to odengatan scale 1:500



the new 'warehouse' folksam ensemble in context with asplund's library, the hill and the city.



site plan scale 1:1000

## the new extension of asplund's stockholm library

a large new public square and building that intensifies the relationship of the hill and asplund's library to the city of stockholm  
**urban concept**

a strong but quiet presence forging a strong bond with asplund and the city westward

key moves

1. to clear away the annexes exposing observatory hill to odengatan and establishing a new library square
2. a simple strong building form in brick, quiet and deferential to asplund and forming an ensemble with the existing buildings

## library concept

the forum and the warehouse

key moves

3. below the new square a new civic room, the forum, the navigation point of the new library
4. a simple yet dignified brick building of generous and well proportioned rooms offering a range of interior atmospheres.

## detail

the library square

*a newly uncovered city place*  
 the cleared space brings the newly extended hill and garden to odengatan. the library square will attract people to take a short cut from odengatan to sveavägen via the hill garden. the new library square of 75 x 45 metres can hold a range of activities compatible with its brief. the hill is extended subtly to lap onto the square and absorb it into the overall garden experience. from here, one can move easily between sveavägen and odengatan or first take the lift car down into the forum. the surface of the square is an important façade when seen from the upper floors of the library and will be used for events such as projections onto the surface tracery with imagery and text. in the summer months it holds activities related to the library. a new library restaurant opens directly onto the square.

the forum

*a spacious and vibrant civic interior for meeting, news and learning*  
 below the square is the forum, a civic scaled interior room of 75 metres x 45 x 6 metres. the forum is a navigation instrument for the library. It's ceiling and columns have a permanent shuttering of facing brick which, together with fringes of natural light forms a tracery, especially commissioned fabric murals for walls and parts of the ceiling will soften the feel. selected fragments removed from the previous annexe buildings will be built into the interior, the whole evoking the atmosphere of an excavated archeological dig, now beautifully lit, cosy and visually linked to the streetscape. The space is designed to be divided up into separate rooms as required, with vibrant meeting, learning, news and cafe activities, from here, one can enter choose to enter the asplund library, the new warehouse or take a lift up onto the square. lining the rear of the forum, like a sock, is a zone of support related accommodation and service spaces (as well as the main auditorium bordered to the public space by the media distribution that traverses the forum at upper level.

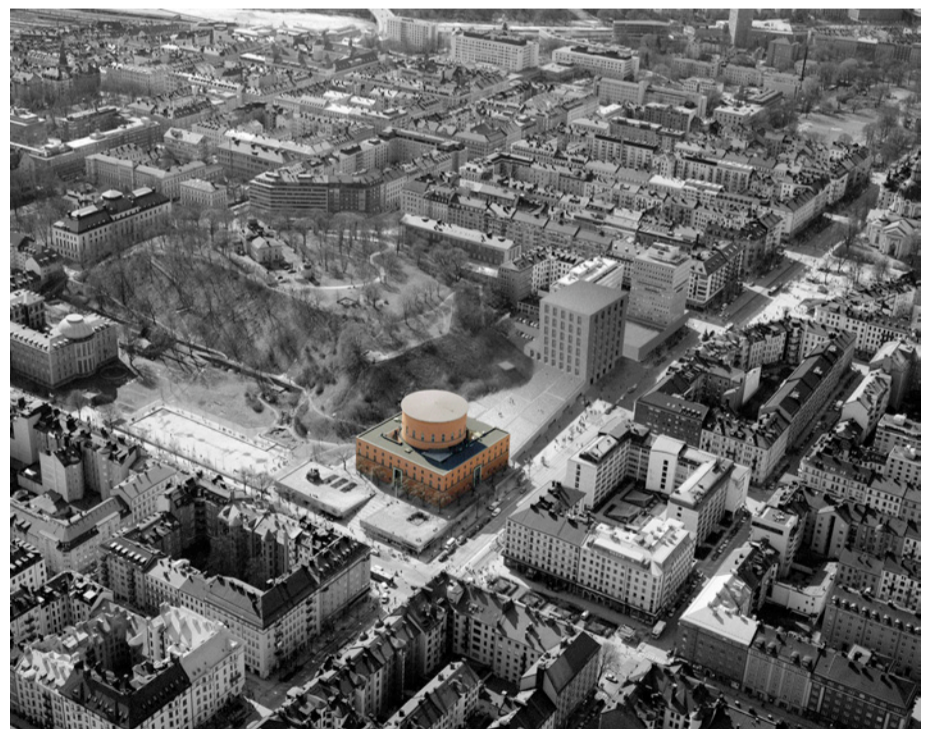
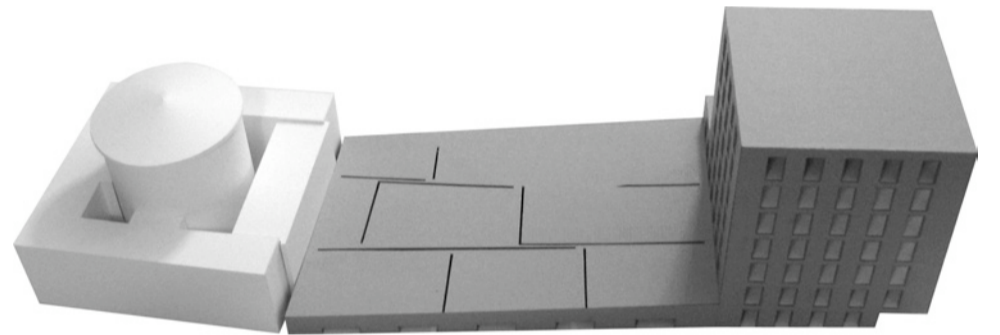
the warehouse of bricks

*deferential and relating to Asplund*  
 the new annex to Asplund's temple of knowledge feels like a substantial warehouse from an earlier century. The new building is faced in brick – the construction material of the Asplund library. flush pointed mortar will rhyme tonally with the textured hand thrown brick to emphasise the whole skin over individual bricks. The monolithic masonry presence is achieved through a structure of concrete cast onto brick to form a tracery in the ceilings and walls. The regular perimeter piers alternate with generous windows creating rich and deep spaces.

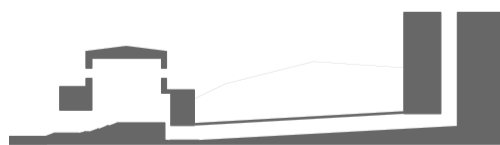
no two floors the same

As Asplund's temple is a 'room-to-room' experience so the warehouse will be 'floor-to-floor', each a separate experience with no two floors the same. The building comprises seven main floors, within which double height 'salons' introduce each theme and media is reserved for tables rather than walls. The rest of the floor is mezzanined and lined with media. It is important that each theme has a different spatiality and acoustic environment introducing it's own world. The 'salon's' size and orientation is different on each floor according to vista building up a full range of spatial experience and visual encounters with the city outside. Steel framed glass lifts move within a single large shaft that is open to the sky. This is the only vertical spatial connection through the building, a counterpoint to the experiential quality of the Asplund drum.

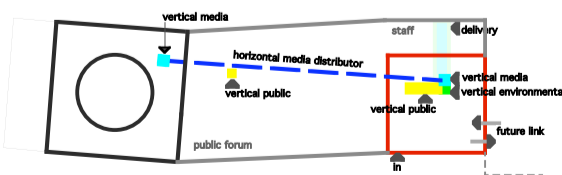
In this project the option exists for the west wing of the Asplund building to be remodelled, or even removed, revealing a restored exterior drum and it's rebuilt dramatic double stairs.



aerial view of the new library addition to asplund's 'temple of knowledge'. opening the hill to sveavägen, the new 'warehouse of ideas' forms an ensemble with the folksam buildings



space

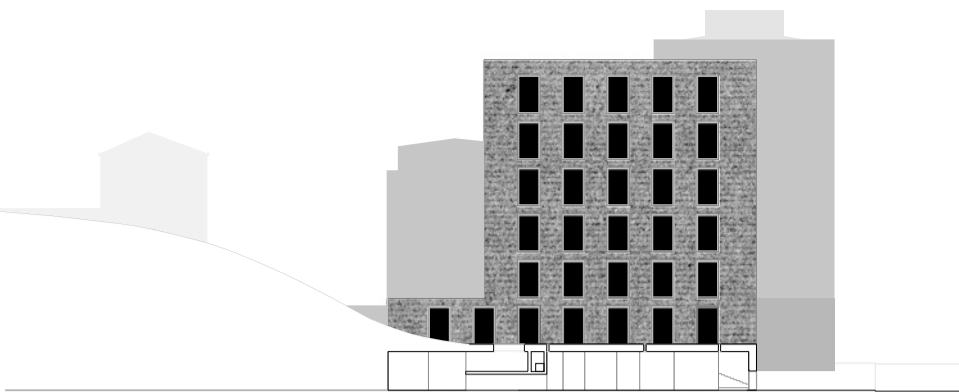


movement

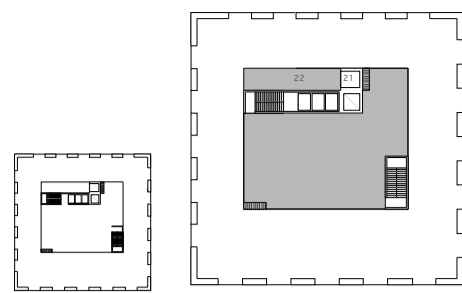


themes

temple forum warehouse

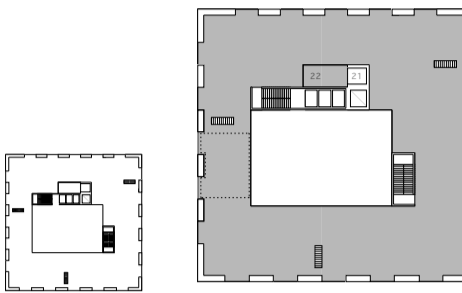


elevation to sveavägen (facing asplund) scale 1:500



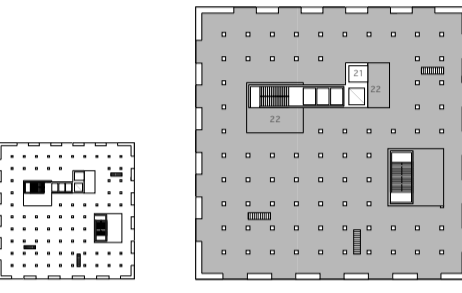
1:1000

6th floor



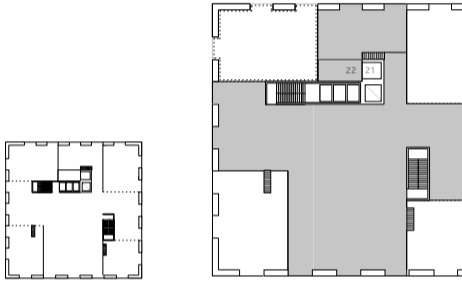
1:1000

5th floor



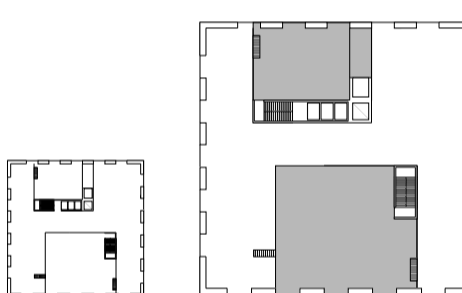
1:1000

4th floor



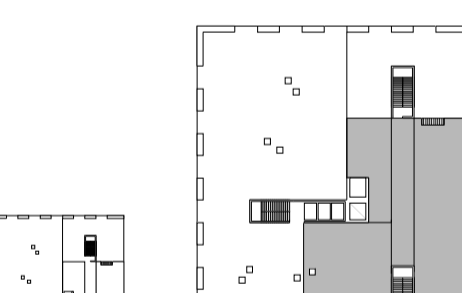
1:1000

3rd floor



1:1000

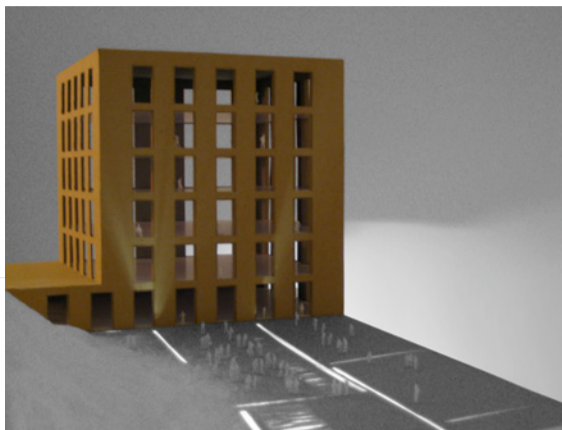
2nd floor



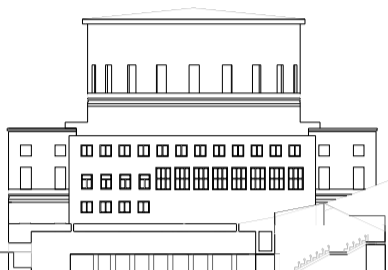
1:1000

1st floor

1:500



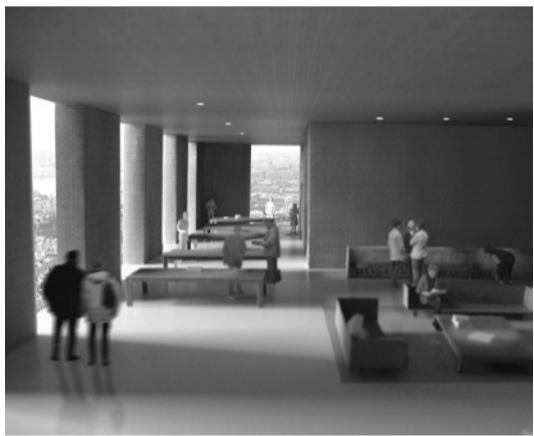
view of the library square and warehouse from asplund's library



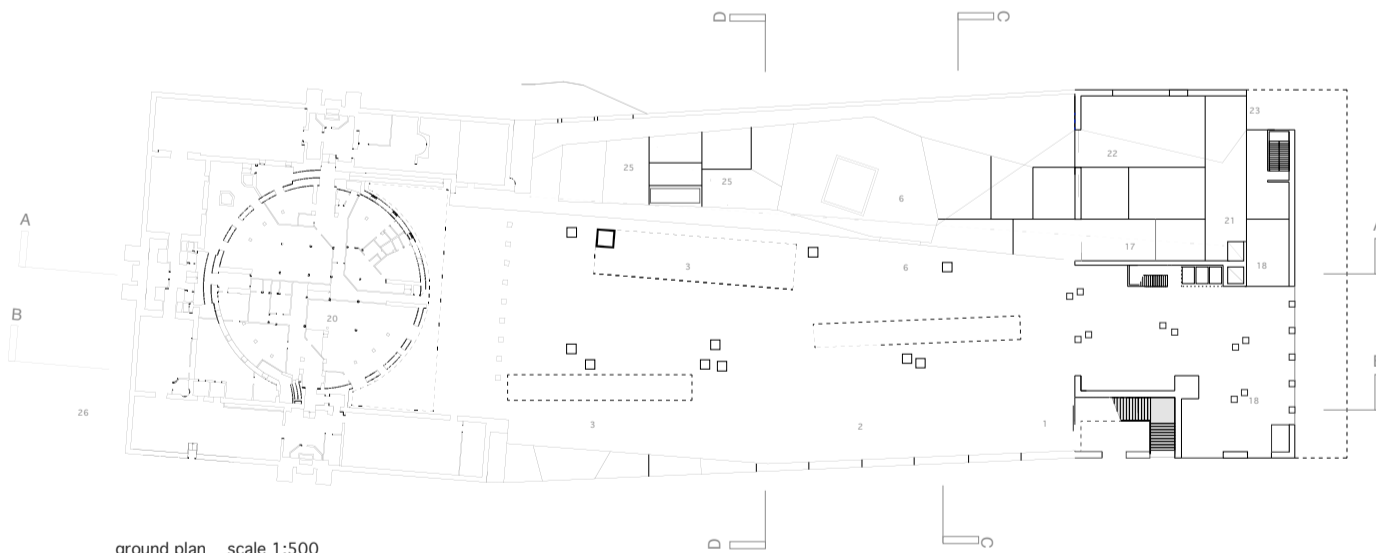
section dd 1:500



the forum a new civic interior for meeting learning and news view towards asplund from entrance



one of seven themed double height 'salon' rooms, each an introduction to a library theme with it's own special city orientation. media here is kept to tables with adjoining media lined mezzanines.



ground plan scale 1:500

measurement of floor areas

areas	mu	gross
[exc. asplund]		
basement [not shown]	1050	1150
ground floor	4575	4995
grd mezz	1100	1300
1st floor	1550	1750
mezz	650	700
2nd floor	1130	1300
mezz	545	625
3rd floor	1130	1300
mezz	750	855
4th floor	900	1300
mezz	900	1300
5th floor	1130	1300
mezz	895	1065
6th floor	1130	1300
mezz	325	405
asplund	7,500	8,000
bazaar building	1000	1,050
total =	26,260	29,695

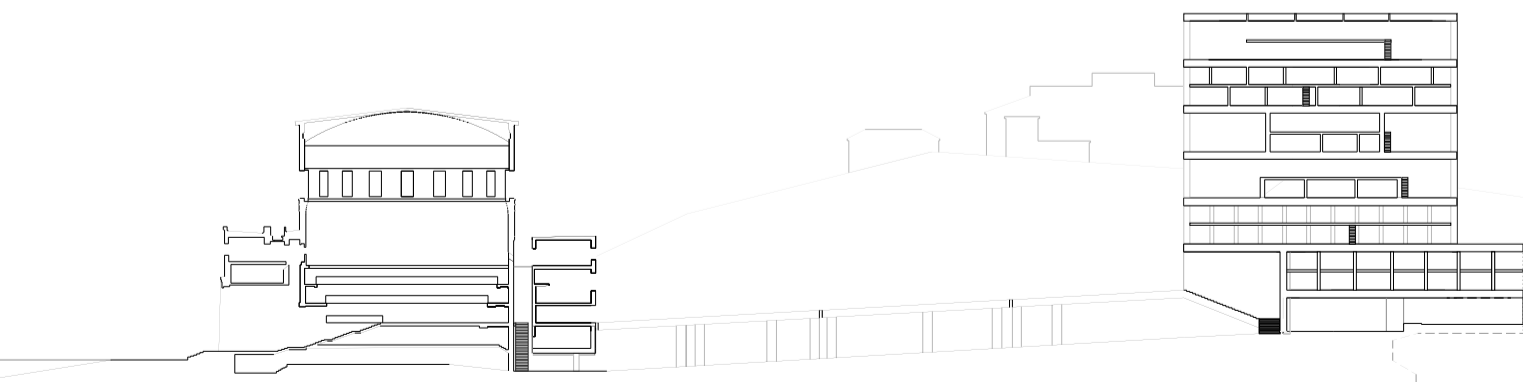
key to plans

main floors with mezzanine scale 1:500  
main floors below mezzanine scale 1:1000

- 1 entrance
- 2 news zone
- 3 the learning zone
- 4 studios
- 5 teaching
- 6 lecture halls/auditorium
- fiction
- childrens fiction
- foreign languages
- the arts
- aesthetics
- civic studies
- nature + technology
- people + countries
- young people
- visit-oriented activities
- toilets/coatrooms/store
- cafe
- restaurant
- depositories
- sorting machines
- media management
- logistics/loading platform
- caretakers offices
- management
- swedish institute of children's books

[note: mezzanine management areas not shown to rear of forum space]

■ = mezzanine area



section aa scale 1:500

a building of brick

temple

forum

warehouse