

Aerial Perspective



Perspective from point B



The Library by night



View from the Main Entrance



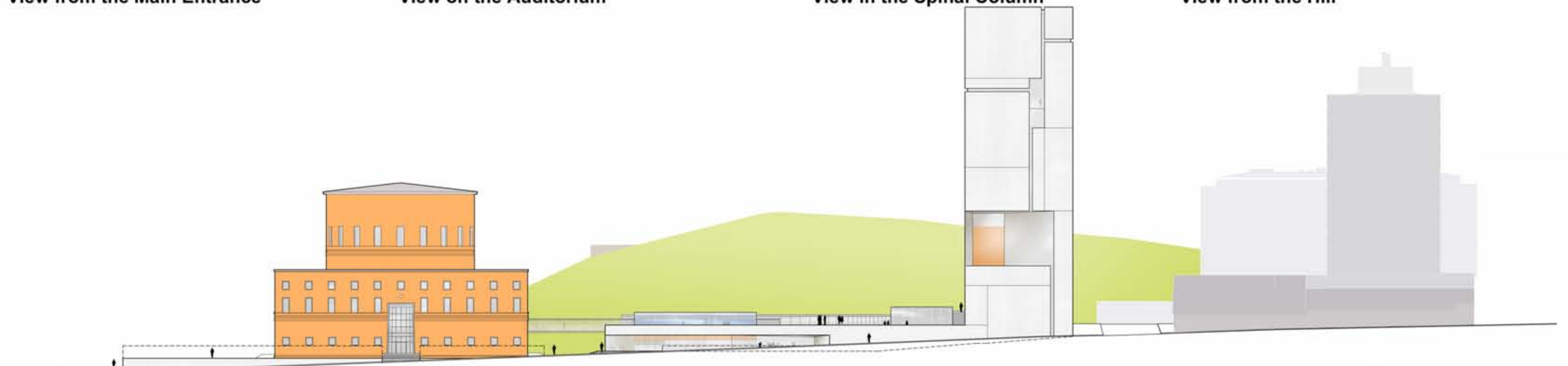
View on the Auditorium



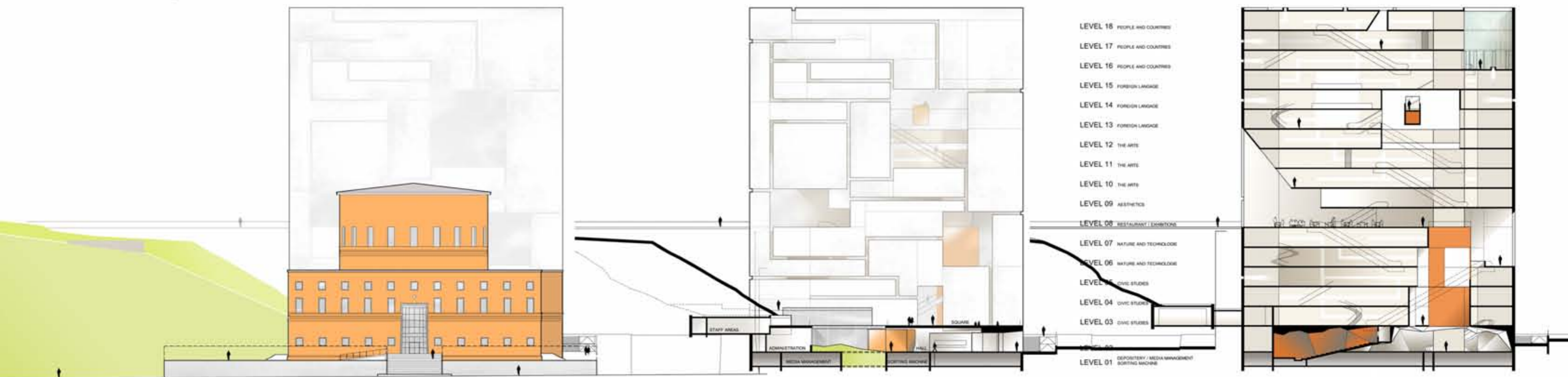
View in the Spinal Column



View from the Hill



Facade from Odengatan - 1/500



Facade from Sveavägen - Cross Section on the Entrance - Cross Section on the Screen - 1/500

- LEVEL 18 PEOPLE AND COUNTRY
- LEVEL 17 PEOPLE AND COUNTRY
- LEVEL 16 PEOPLE AND COUNTRY
- LEVEL 15 FOREIGN LANGUAGE
- LEVEL 14 FOREIGN LANGUAGE
- LEVEL 13 FOREIGN LANGUAGE
- LEVEL 12 THE ARTS
- LEVEL 11 THE ARTS
- LEVEL 10 THE ARTS
- LEVEL 09 AESTHETICS
- LEVEL 08 RESTAURANT / LOBBY
- LEVEL 07 NATURE AND TECHNOLOGY
- LEVEL 06 NATURE AND TECHNOLOGY
- LEVEL 05 CIVIC STUDIES
- LEVEL 04 CIVIC STUDIES
- LEVEL 03 CIVIC STUDIES
- LEVEL 01 DEPOSITORY - MEDIA MANAGEMENT SORTING MACHINE

THE STOCKHOLM CITY LIBRARY: SILENT HILL

Urban Insertion: Revelation through unobtrusiveness.

The aim is to re-situate the library in the town as a landmark, not a monument but a public place, an agora, a forum for communication, a place for exchanges between men and epochs. Considering the exceptional singularity of the site, showing Asplund's building and the Observatory hill to advantage seems primordial to us. The project boils down to the creation of a square prolonging the existing base of Asplund's library to become the backdrop of the play which is being performed, "Asplund and the Observatory Hill". Our building, meant to be a natural constituent of the site, intertemporal, leaves the hill and the architecture of Asplund's building to reveal themselves. The library thus becomes the third public place between "Odenplan" and "The Library park and pond". One of the great qualities of Asplund's library is its simplicity of volume. It therefore seemed difficult to us to conserve the 3 annexes by grafting them on, including them, and so on... to end up creating a complicated building of complex legibility, (contrary to the fundamental principle of Asplund's building: Minimalism). A pure, simple image, letting Asplund's building breathe, became, for us, the only option possible. The loss of the three annexes enables us to thin out the urban landscape: open the vista of Asplund's building and re-establish its role as a landmark from Odenplan and bring the town to the foot of the hill on Odengatan.

The architecture...

The project involves the body in the relationship between routes and perception, to stage the hill of the Observatory and Asplund's building in a play of revelation and redefinition. The project opens out several attitudes, positions, postures, concerning culture, from the intimate to the public, from strolling about to direct access, from work to leisure, alone or in a group. Silence, respect and light are Asplund's key words. We reinterpret them in the extension. As in the existing building, the visitor passes from darkness to light following his investigation of the library. Light defines the different localities of the project.

How it works

The Stockholm City Library should be a free zone where knowledge belongs to no-one and circulates freely, an area of exemption in the city where the reader feels protected against the pre-programmed information of which he is the daily target.

A logistic base located on Level 01 (depositories, media management, sorting machines, mechanicals...), accessible from Gyldengatan for deliveries, linking the extension to Asplund's library, constitutes the base of the building.

A structuring public area located on Level 02, of which the roof is a public place, (made up of the main entrance, the cafe, the auditorium, the studios and teaching zones and the news zone being enables Asplund's building, the Screen and the hill to be connected to the street. This public area is prolonged in the screen, becoming a vertical street, forming a spinal column punctuated with places of communication and exhibitions on the different themes of the Subject Areas.

The majority of the Subject areas are situated in the Screen leaving Fiction and Children in Asplund's building. Each open media collection will have its own atmosphere, its light, its views through it's link with the vertical street.

The learning zones are also spread out around the library, offering several different working situations (in every subject area, in the hall, in the vertical street, on the square, etc.). The visit-oriented activities/offices are like satellites placed in contact with the public and the open media collections.

The restaurant and the exhibition zone which are located in the middle of the Screen, accessible from the hall, Gyldengatan or the Observatory Hill, become after the Main Entrance, one of the principal places in the library.

The new Stockholm Library is a place open to the town, permitting different practices, a place of exchanges, democratic, accessible, meeting different needs and responding to different attitudes, enabling everyone to appropriate it to themselves.

Beyond the library as a simple container of books and data media, our project attempts a fusion of the experiences of reading, listening, looking and touching. While the storage media are in constant mutation, can the library be defined according to a logic of transformation, as a catalyst of exchange and interaction?

PUBLIC AREAS

Entrances	840
News Zone	310
The Learning Zone	1 700
Studios	150
Teaching	200
Lecture Halls / Auditoriums	510
Subject Areas / Open media collections	1 400
Fiction	950
Children's fiction	1 700
Foreign languages	1 910
The Arts	1 800
Aesthetics	850
Civic studies	1 700
Nature and technology	1 400
People and Countries	1 800
Young people	510
Visit oriented activities / offices	1 460
Other public areas	250
Cafe	310
Restaurant	700
DEPOSITORY MEDIA MANAGEMENT	
Depositories	990
Sorting machines	170
Media management	870
Logistics / loading platform	210
Caretaker's office and property services	450
ADMINISTRATION AND STAFF	
Management	180
Marketing	300
Virtual	170
Outreach activities	120
Regional library	300
Staff areas	850
The Swedish Institute of Children's Book	1 100
TOTAL AREA	24 290

GROSS AREA

28 900

Public Areas

- Entrances & Public Areas
- The News Zone
- The Learning Zone
- Auditorium
- Studios & Teaching Rooms
- Subject areas
- Subject areas - Children
- Subject areas - Young People
- Visit-oriented activities / offices
- Public Areas (Exhibitors, etc.)
- Restaurant
- Cafe
- Shop (Existing)

Depository Media Management

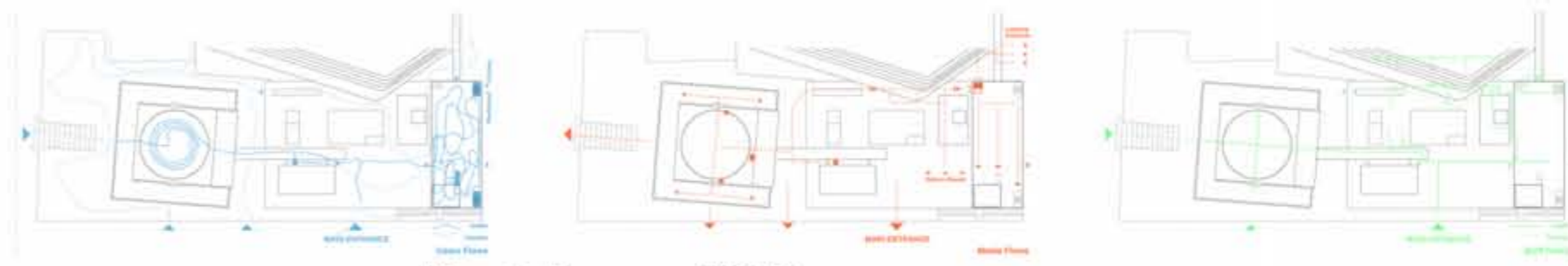
- Depositories
- Sorting Machines & Media Management
- The Logistic Center / Loading Platform
- Caretaker's Office
- Supplies and Security
- Mechanicals

Administration & Staff

- Different offices & Staff Areas
- The Swedish Institute of Children's Books

Outside Spaces

- The Square (Upper & Lower)



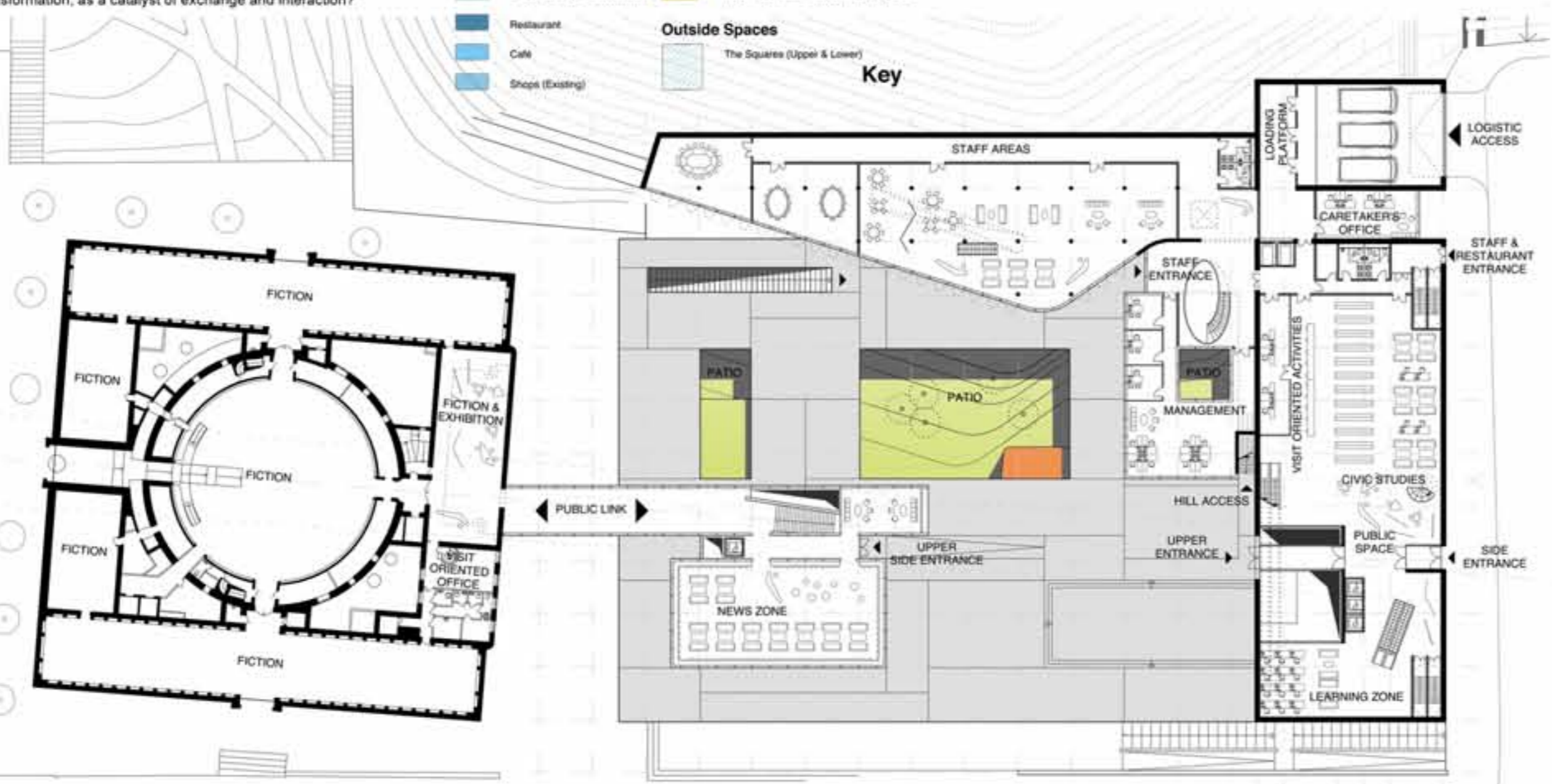
Flow Schemes - 1/2000



Longitudinal & Cross Sections - 1/1000



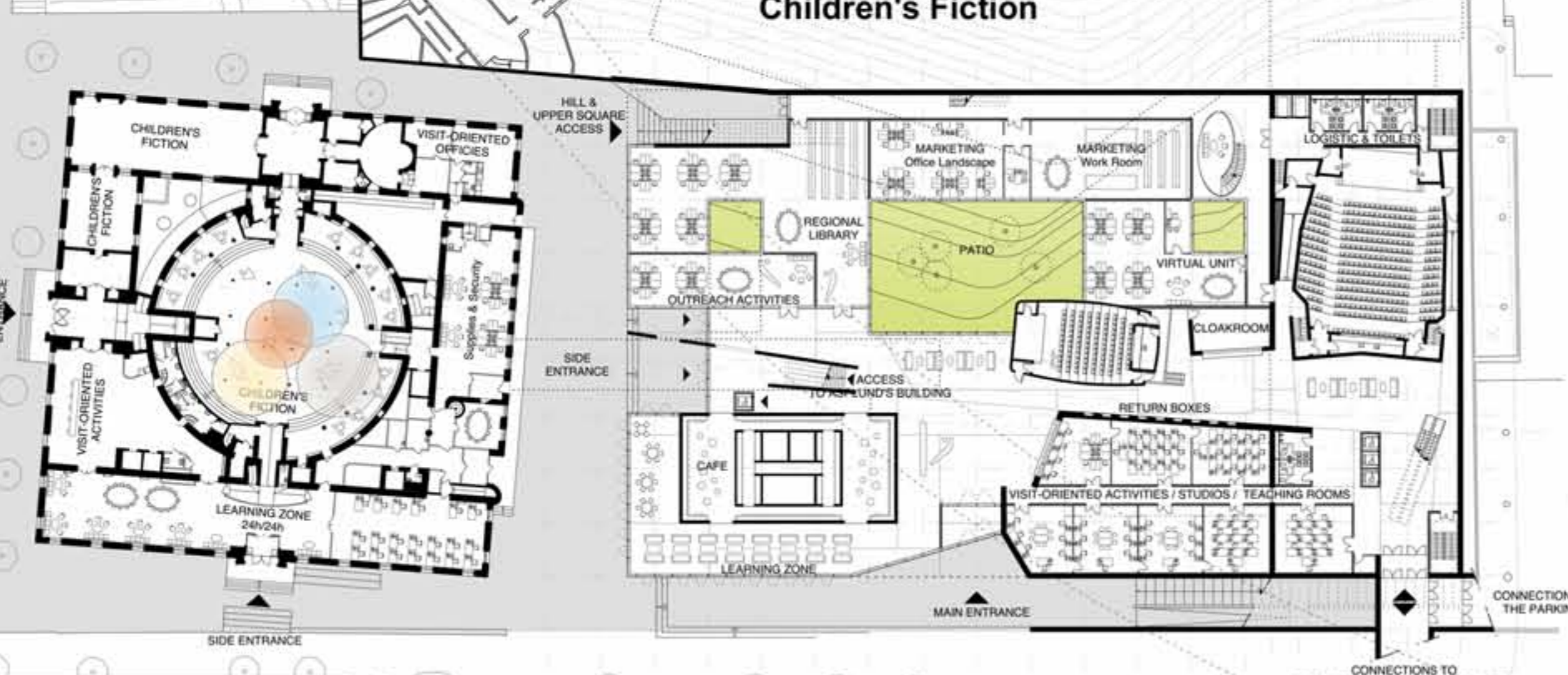
Level Plans - 1/1000



LEVEL 03 - 1/500



Children's Fiction



LEVEL 02 - 1/500



LEVEL 01 - 1/500



Longitudinal Section - 1/500

- LEVEL 18
- LEVEL 17
- LEVEL 16
- LEVEL 15
- LEVEL 14
- LEVEL 13
- LEVEL 12
- LEVEL 11
- LEVEL 10
- LEVEL 09
- LEVEL 08
- LEVEL 07
- LEVEL 06
- LEVEL 05
- LEVEL 04
- LEVEL 03
- LEVEL 02

SILENT HILL