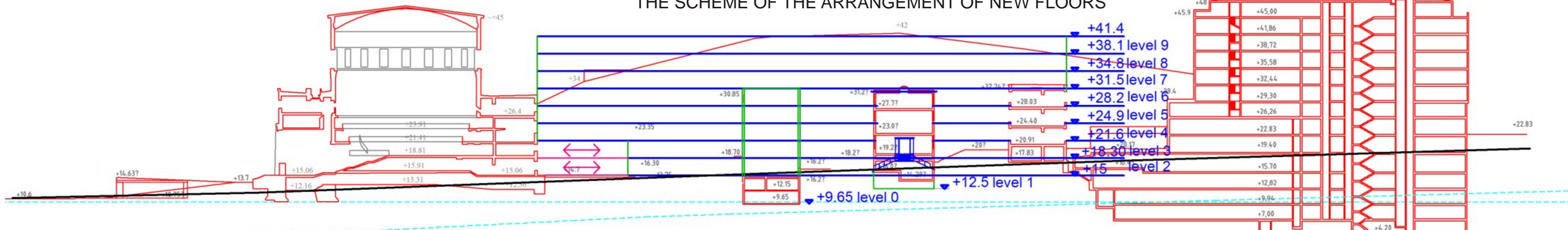
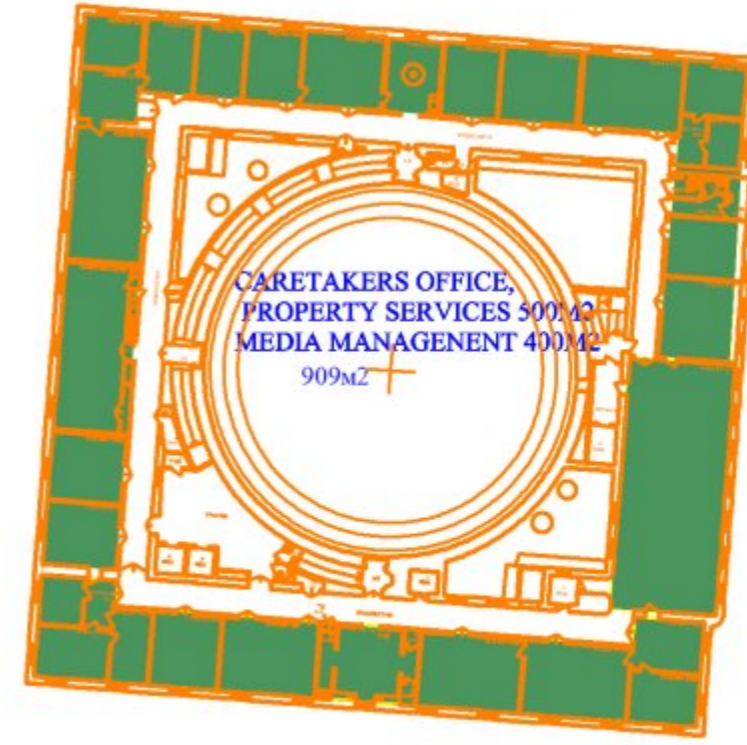
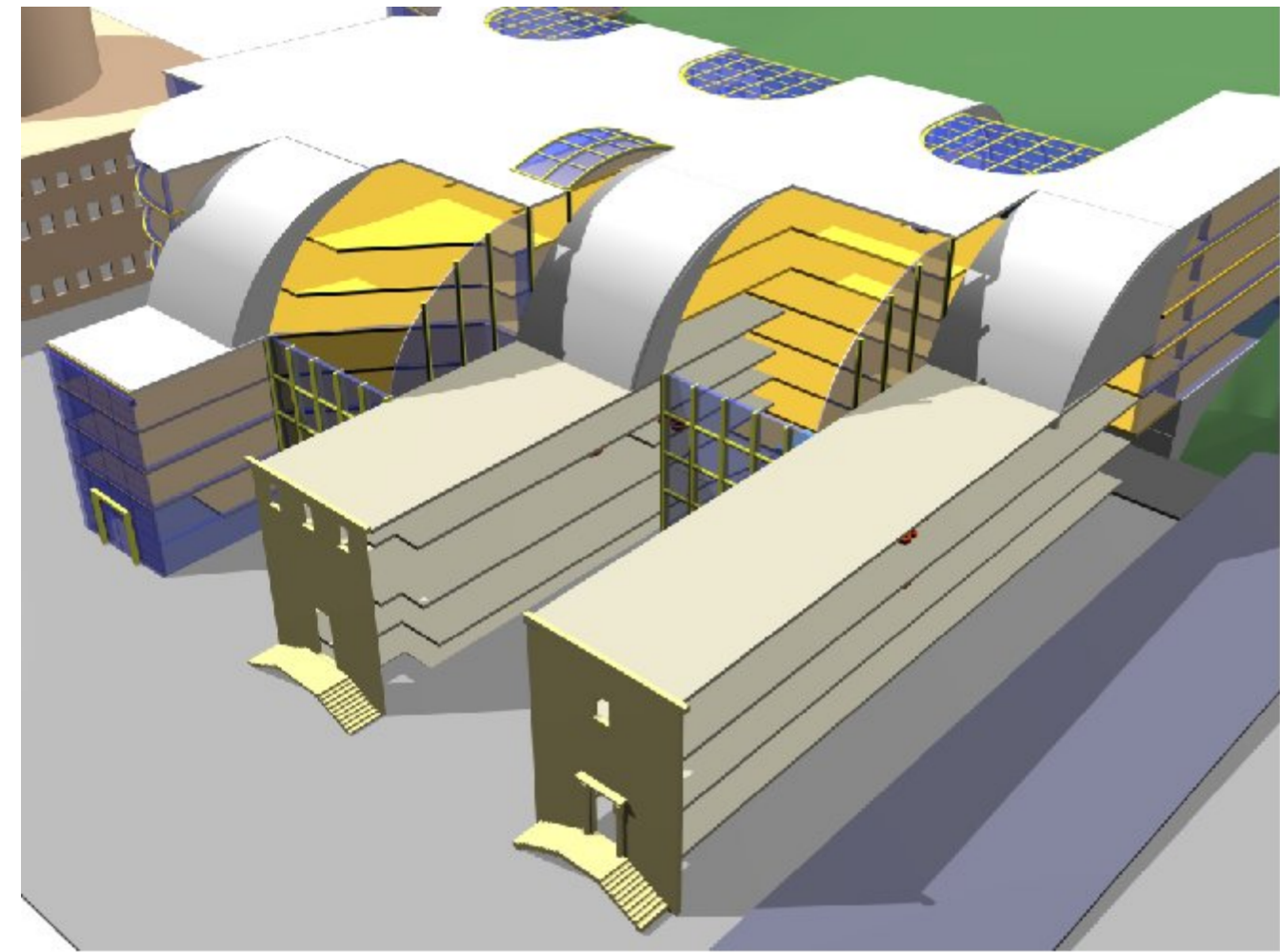


THE SCHEME OF THE ARRANGEMENT OF NEW FLOORS

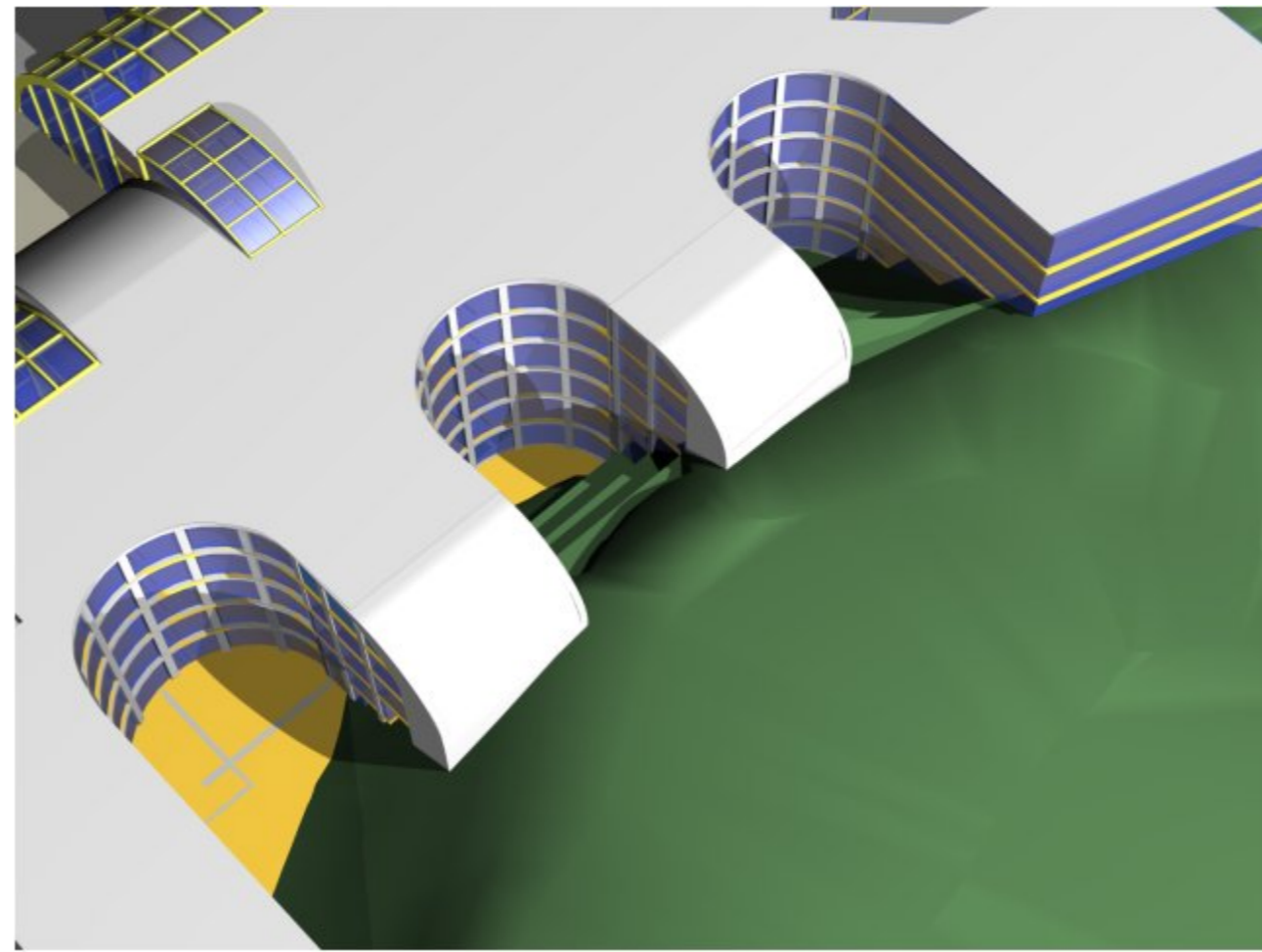




SCHEMA WITHOUT WALLS



SCHEMA WITHOUT ROOFS OF COURTYARDS



DESCRIPTION

One of the objectives of this project is to keep the most valuable Annexes. In our project we have attempted to take care of the existing natural environment and cultural values. Glass surfaces of the new building shall be transparent and reflective, to allow the surrounding historical buildings to be seen. In our project we keep extensions number 2 and 3. On a place of an extension number 1 we place the new building of library with a front entrance from Odengatan side at level +15.00, thus we assume to keep basement levels Annex 1 (level +9.65 and level +12.5). The Loading of books is carried out with the help of loading platform situated at Spelbomskan side. The additional platform is at Guldengatan side in southern part of Annex2. At the east side of Annex 2 the courtyard is projected to which learning zones on all floors adjoin. From Sveavagen side the separate entrance to the children's section is possible. Between extensions 1 and 2 there is a separate entrance at level +21600, by which it is possible to get directly to studios and lecture halls. Annex 2 is used for a café with a separate entrance at a level +16.5 and for accommodation visit-oriented activities/offices on all other floors. It is possible to enter Visit-oriented activities/offices directly from a ground level from Odengatan. Level +12.5 in Annex2 and a part of space marked +12.5 and +9.65 which belonged to Annex1, may be used for a restaurant.

We provide an opportunity of an entrance to Annex 3 from the southwest on a level +20.91 for possible connection with prospective underground shopping centre. Annex 3 it is used for management, marketing, virtual, and outreach activities. On a mark +28.03 in Annex 3 the part of Aesthetics area is placed.

Asplund's library at a level +12.36 it is used as staff area. At the northern side of level +15.06 Regional library is placed, all other rooms at this level are occupied by Swedish institute of children books. At level +18.81 in Asplund's library the Closed depository is situated. At level +26.4 we have arranged Caretakers office and property services. Connection between Asplund's library and new extension is carried out with the help of two transitions in a southwest part at level +15.06 and at level +18.81.

New spaces of library are located behind the existing Annexes 2 and 3 at the northern side of a hill and grouped around of three multilevel courtyards. Spaces adjoining to a hill border on a hill with terraces at every floor. All spaces are connected by a horizontal corridor running from the east to the West. We assume that books will be sorted with the help of sorting machine located at level +15 and +18 and risen with the help of lifts onto other floors and carried through horizontal corridor to subject areas. We assume that lifts adjoining to the room of Sorting machine will be used only for rising and descending of books.

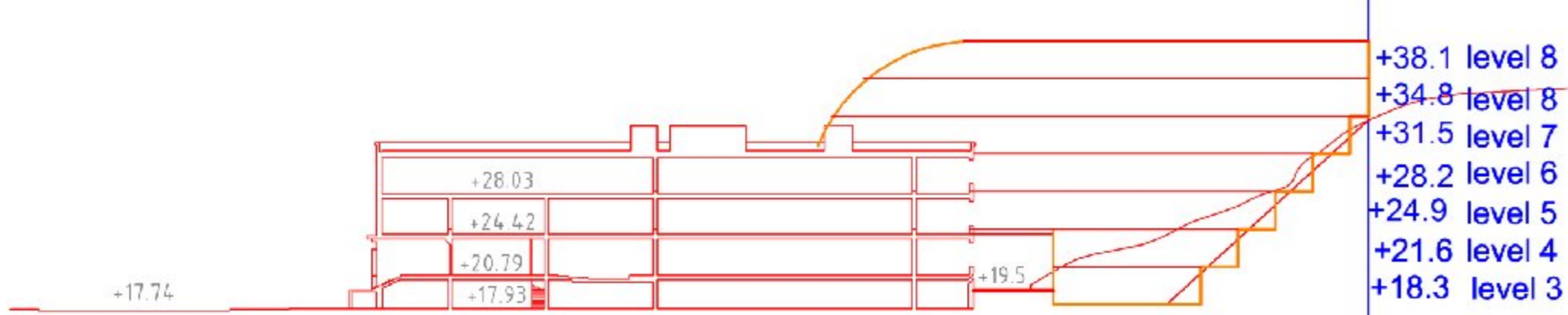
In the future, as we assume, with development of electronic paper (E-Paper) technology, the library becomes storehouse of the information, rather than paper. Each reader will be able to come to library and find the book necessary to him in an electronic variant with the help of a computer and download it on the reader's « electronic pages ». Probably, the book with "electronic pages" will be given out to readers as the reader's ticket. In view of such development we assume that the need in sorting machines will disappear (as it would not be necessary to return books to library) and so the subject areas, probably, will be used for learning zone, teaching zone and as a place for communication. The Function of storage of old and rare books thus remains in Asplund's closed depository.

- STAFF AREA(in ASPLUND)
- RESTAURANT
- SWEDISH INSTITUTE OF CHILDREN BOOKS
- REGIONAL LIBRARY
- VISIT ORIENTED ACTIVITY
- SUBJECT AREAS
- NEWS ZONE
- SORTING MACHINE
- LOGISTIC LOADING PLATFORM
- TEACHING

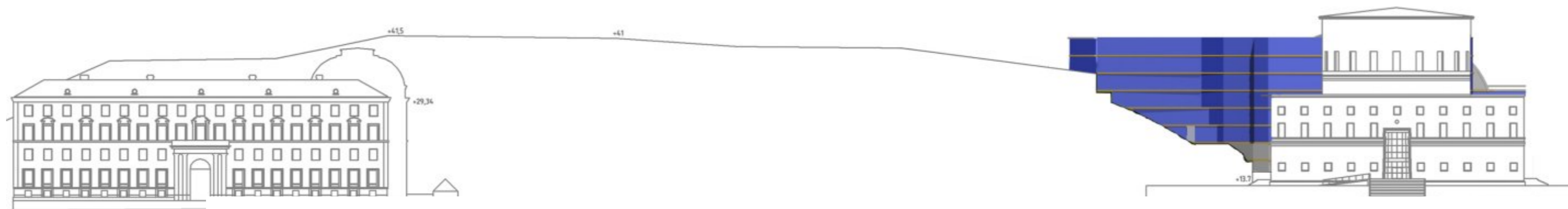
NEW BUILDING GROSS AREA (2)
(WITHOUT ASPLUND AND ANNEX2 AND ANNEX3)

LEVEL 1	855 ?2
2	1671
3	2521
4	3016
5	2762
6	3100
7	3400
8	3360
9	3200
TOTAL	23885 ?2

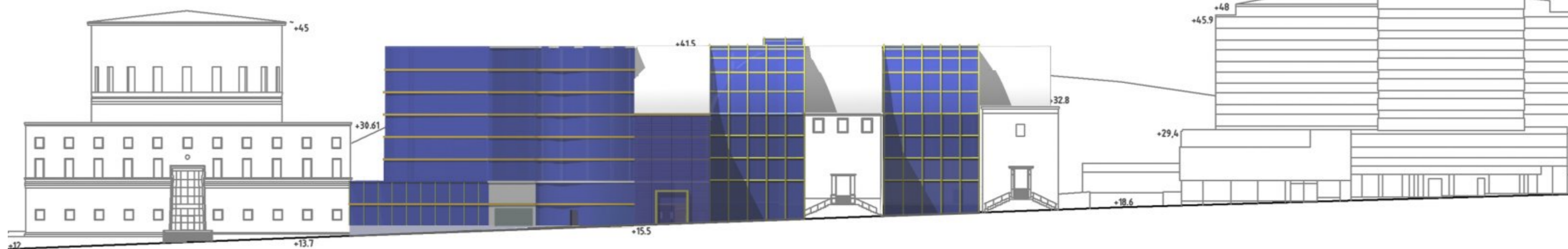
SECTION ON ANNEX3



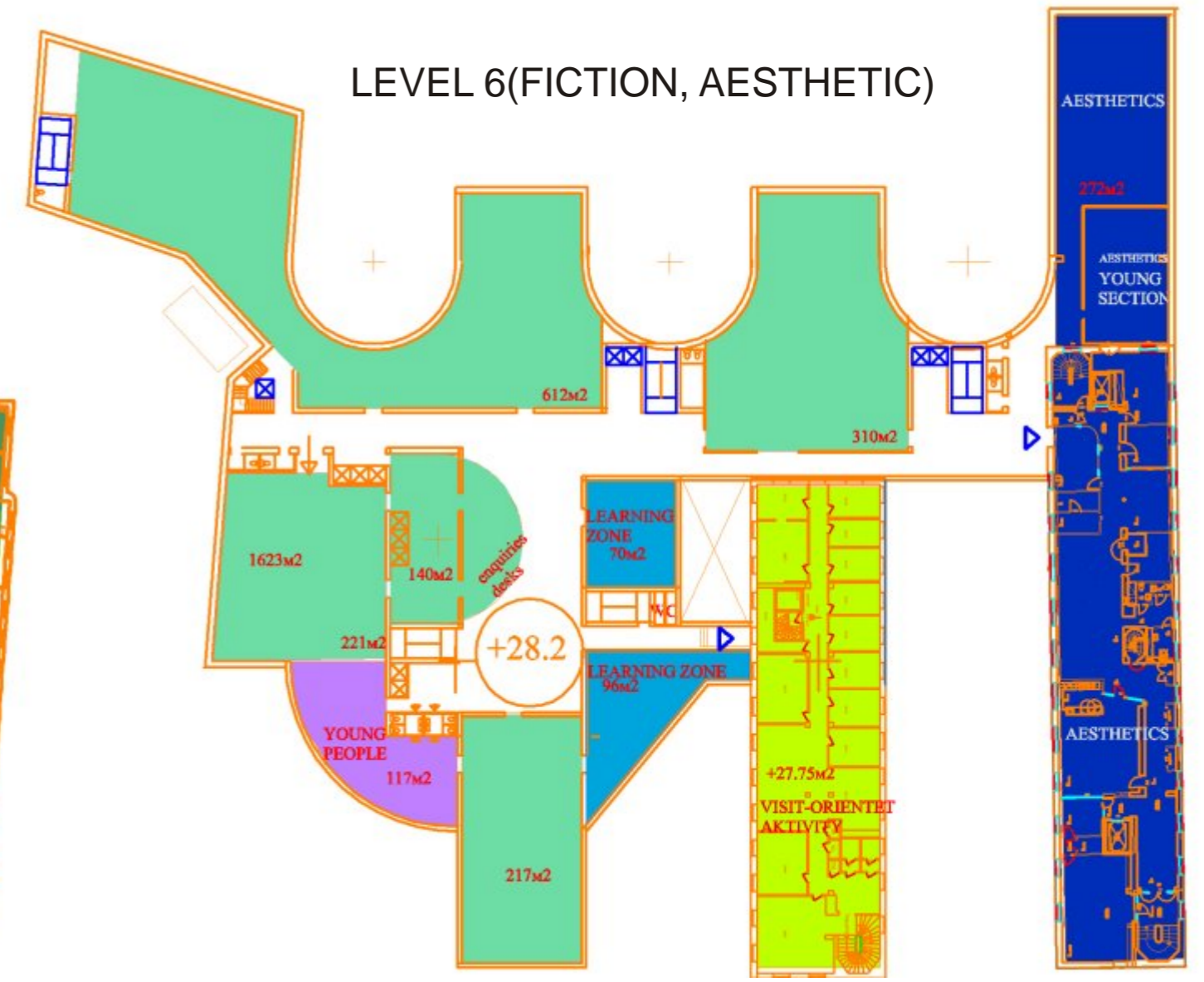
ELEVATION SWEAVAGEN



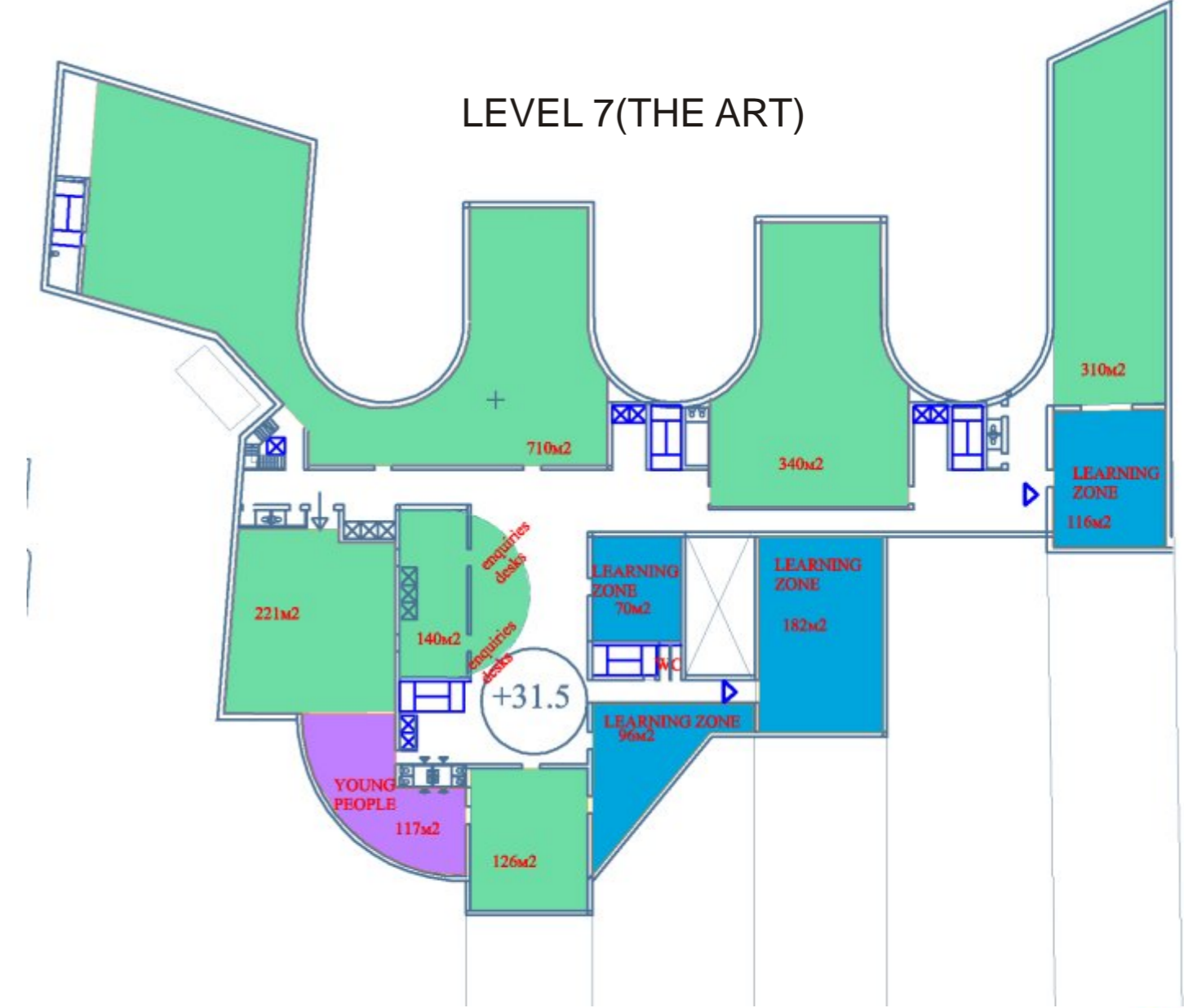
ELEVATION ODENGATAN



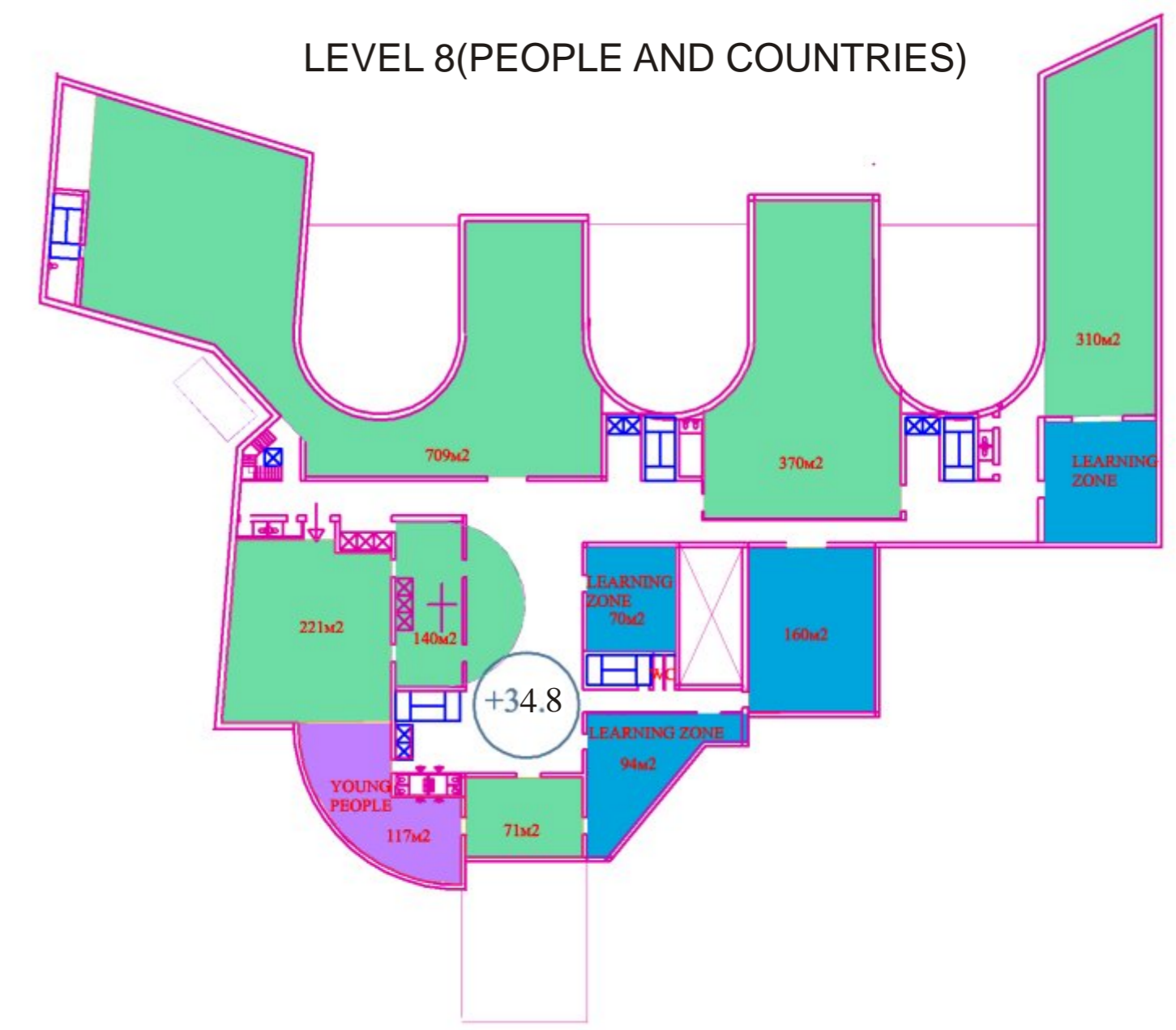
LEVEL 6(FICTION, AESTHETIC)



LEVEL 7(THE ART)



LEVEL 8(PEOPLE AND COUNTRIES)



LEVEL 9(CIVIC STUDIES)

