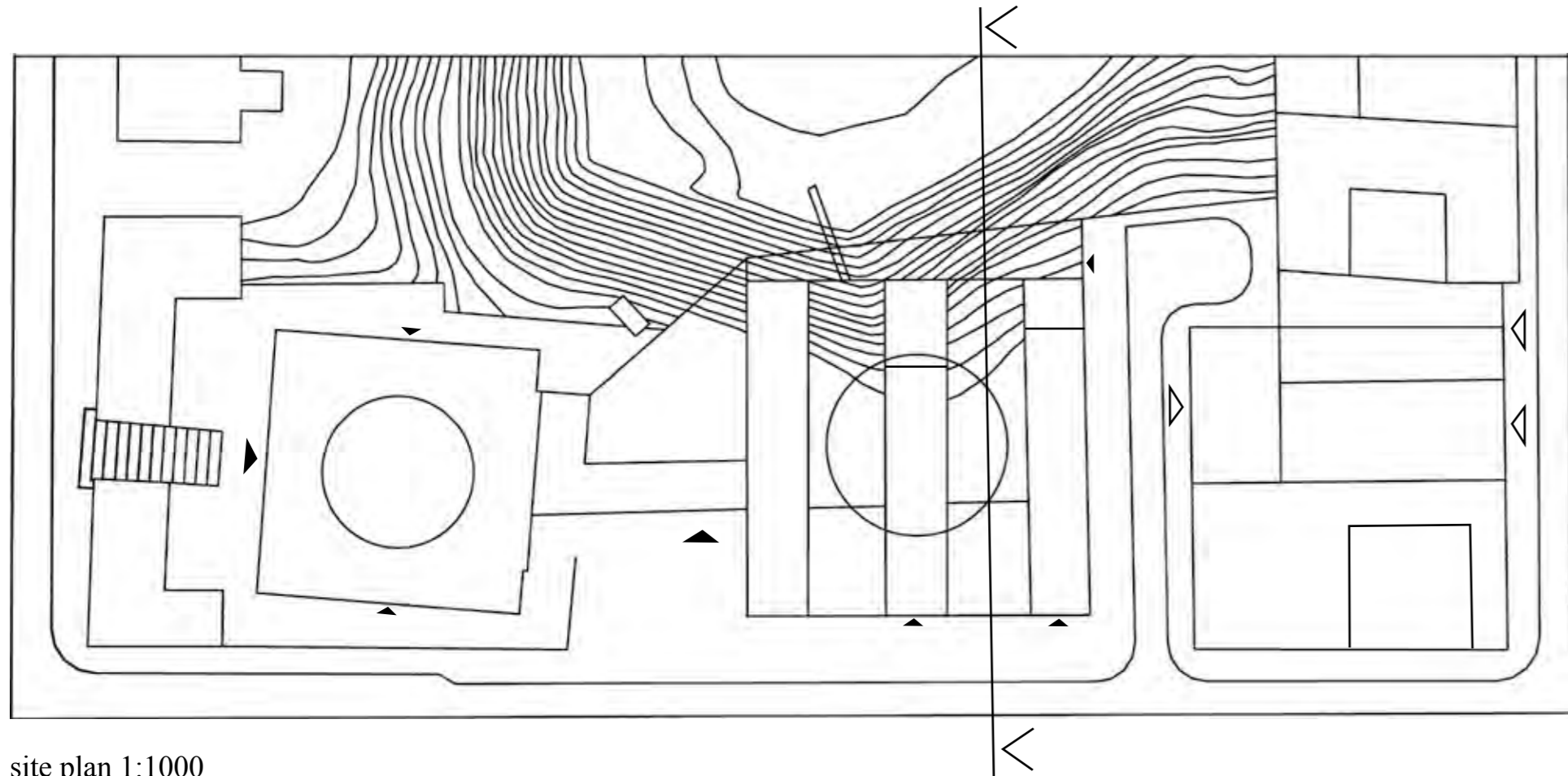
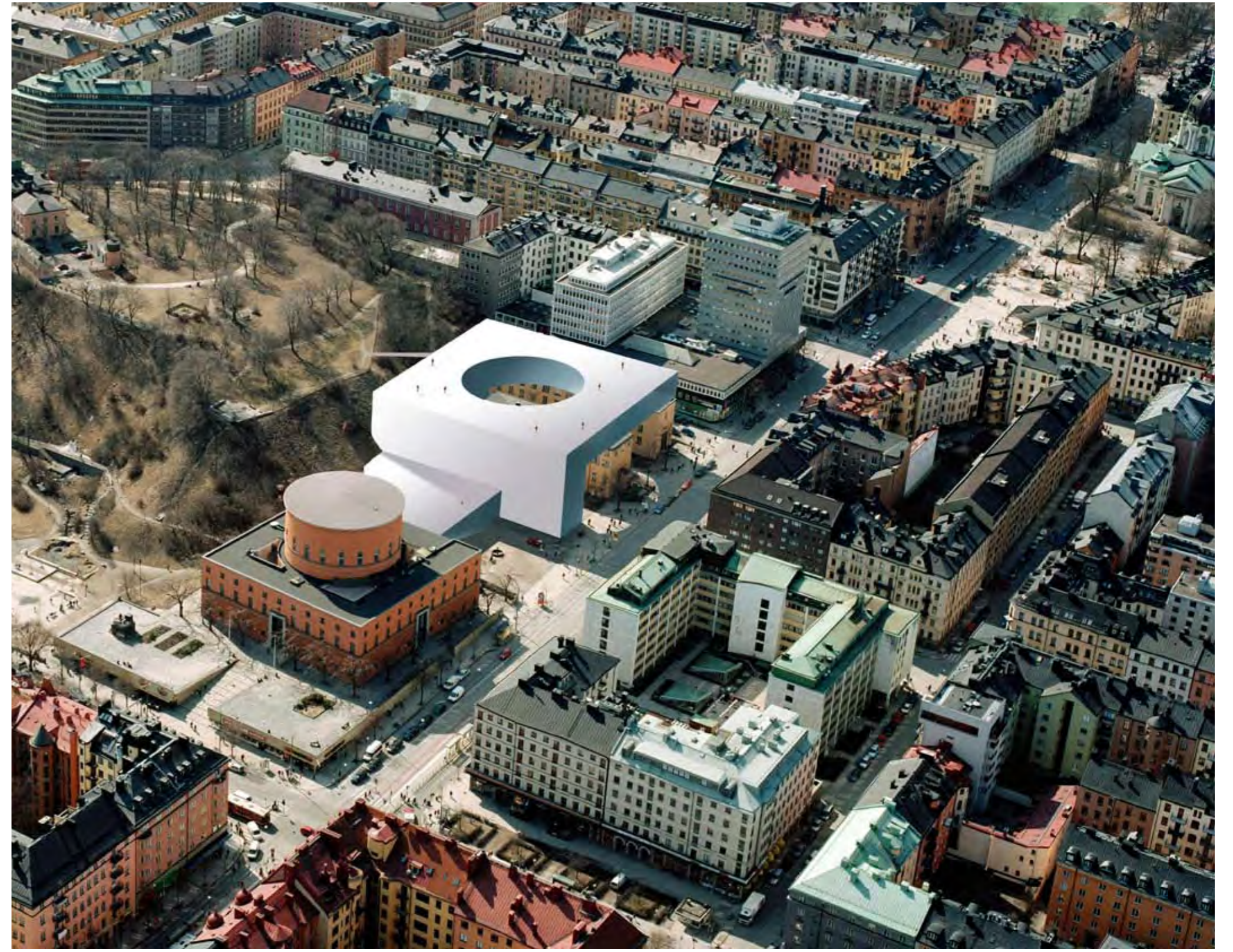


## Architectural Competition Stockholm City Library Proposal for New Extension

The proposal accentuates the importance of the aspect of time. The building is a paradox that tries to confront the existing and ancient with the modern and new. To reinforce the existing and to intensify the new, respectful renovation combined with modern architecture is essential. At the same time, possibilities are explored to re-enlarge Observatory Hill back towards Odengatan.



site plan 1:1000



### Format

The new extension of the Public Library consists of three different types of volumes, each with its own spatial quality and flexibility: the plinth volume, the middle volume and the top volume.

Packed together with the annexes they form an inverse echo of the Asplund Library.

The plinth volume is constructed by three floor levels: Asplunds Rotunda-floor level, street level and underground level. The new main entrance is accessible via Spelbomskan Square, directly linked to the descending auditorium floor. The plinth volume is attached to the Asplund Library at the central 'Rotunda floor' level, at the windowless part of the existing façade. The space underneath the connection maintains the pedestrian route around the Asplund Library. The exact location of the new perforated passageway completes the geometrical axis of (side) entrances of the existing Library.

The plinth volumes rear entrance, at Gyldéngatan, provides accessibility to the horizontal and vertical main service routes. Underneath Folksam property, a commercial gallery connects Gyldéngatan simultaneously to Norrtullsgatan and to the (planned) underground shopping centre. The circulation of visitors, generated by the gallery, disconnects Gyldéngatans dead-end aspects and imago.

The middle volume acts as a functional and programmatic interface between the plinth and top volume. Platforms of various programme generate a 'curiosity for the other' between the different types of visitors that travel among the library floors.

The top volume replaces the view upon the annex- and Odengatan roof landscapes with a perforated construction. The prominent interior overlooks Observatory Hill and Odengatan while offering the library visitors a panoramic 360° from its public roof terrace.

### Sacrifices

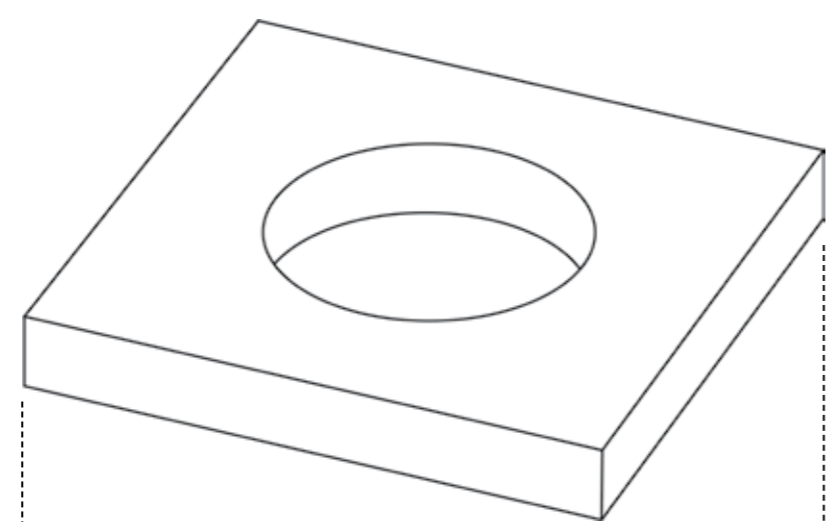
All remaining buildings and the Park & Pond, will be fully and most respectfully restored. Observatory Hill will expand towards Odengatan.

To preserve the important urban and architectural qualities of Spelbomskan Square, the connecting volume between the existing and the new library needs to replace the side building of annex1. A more constructive effective building replaces annex1 in order to protect annex2, annex3 and the open space in between, from weight bearing structures of the top volumes mass. A direct route between the top volume and street level of annex3 is accomplished by a more compact (spiral) staircase. The new staircase generates constructional space to bear the remaining weight pressure of the top volume.

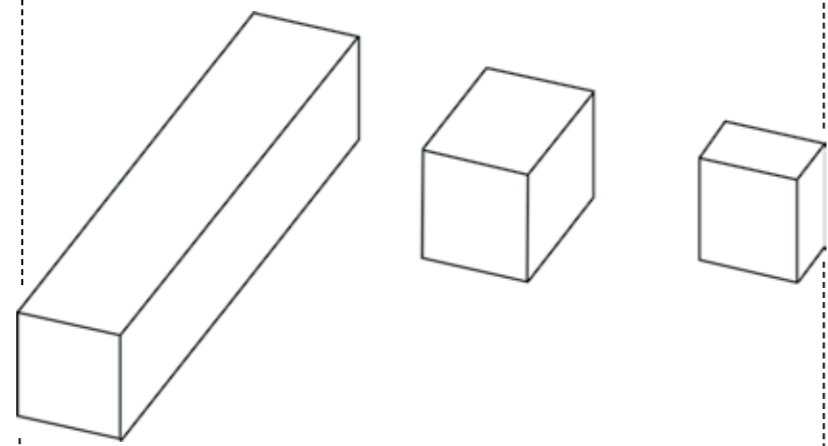
### Cosmetics

Facades at Odengatan, Observatory Hill as well as the inner circle are made of glass. All eastern and western facing facades are made of solid walls. The serene walls provide the Asplund Library with a tranquil décor that respectfully articulates the existing library buildings. Inside the plinth level, the outside walls of the annexes transform into interior walls of the new library, remembering the present.

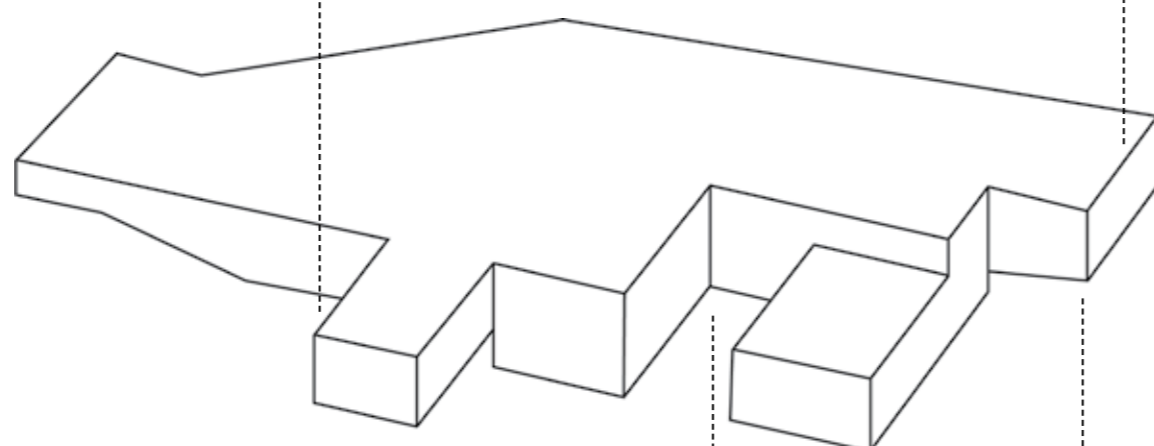
### Top volume



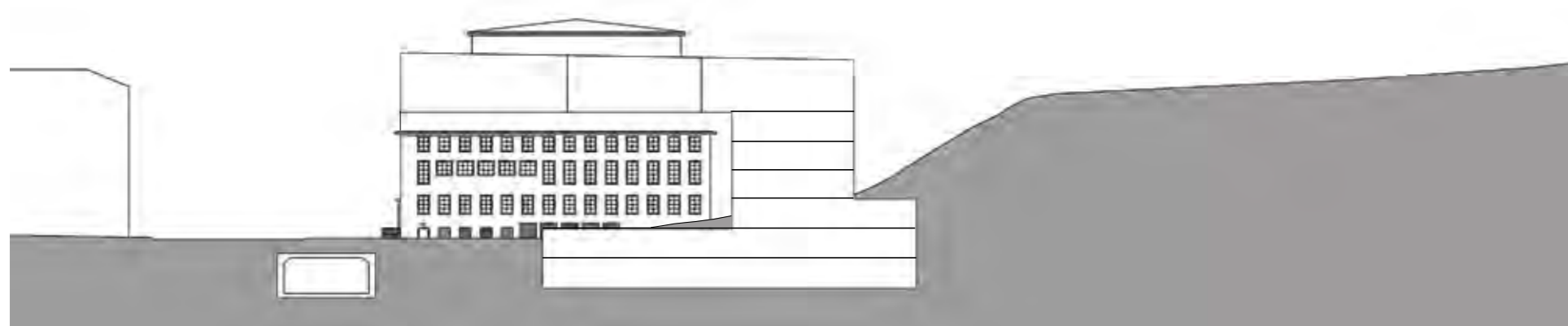
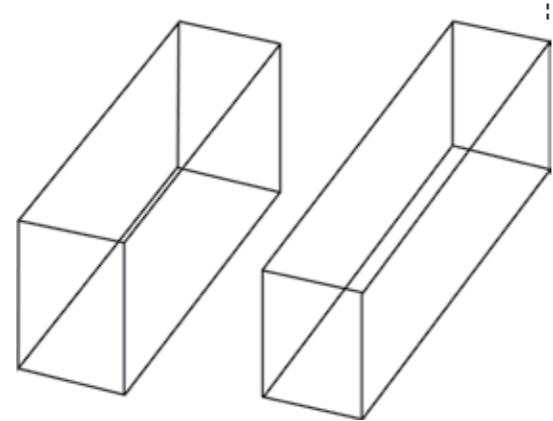
### Middle volume



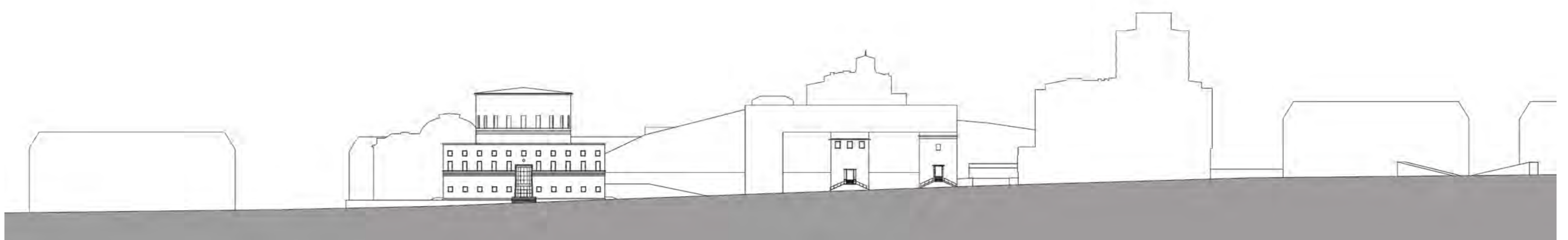
### Plinth volume



### Annex2 and 3

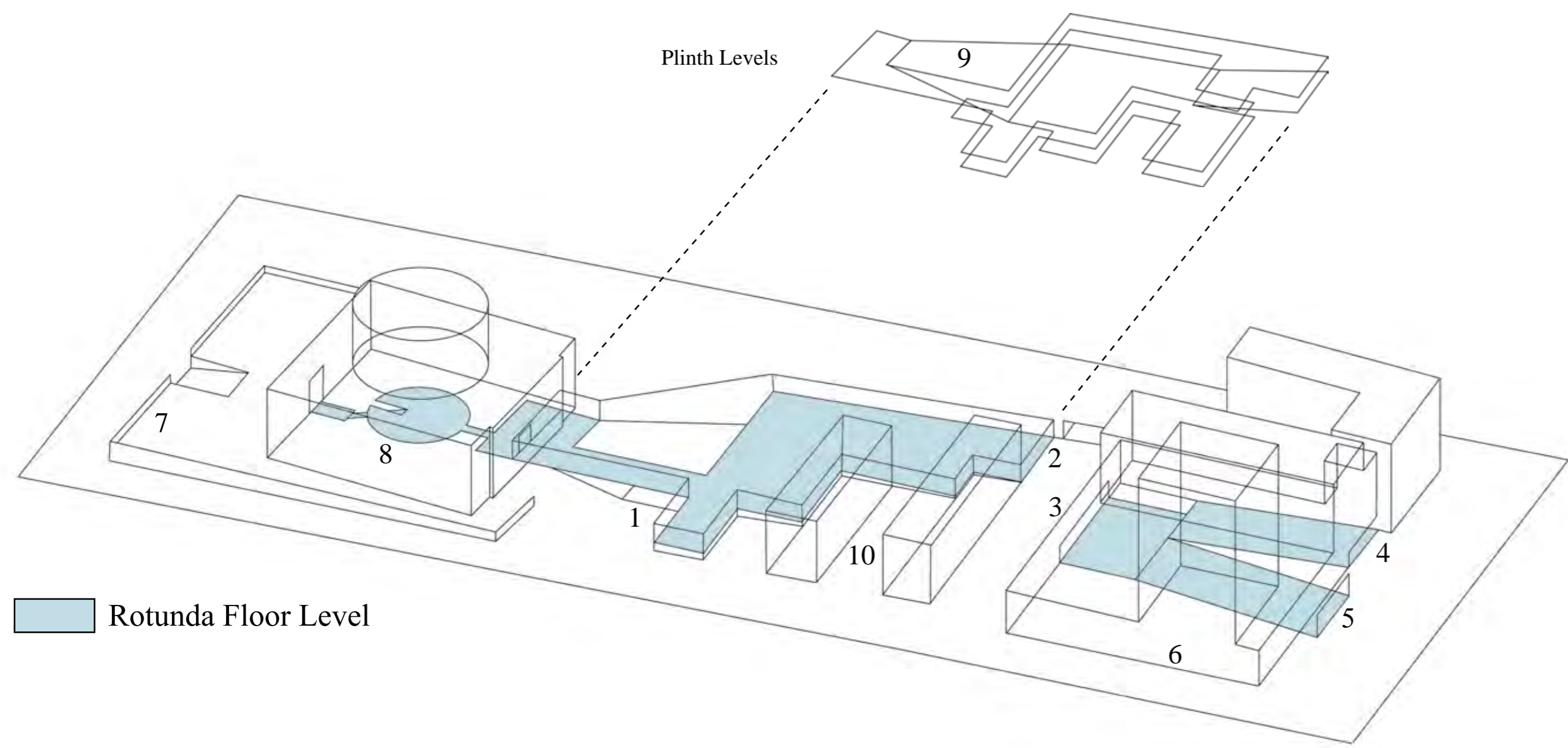
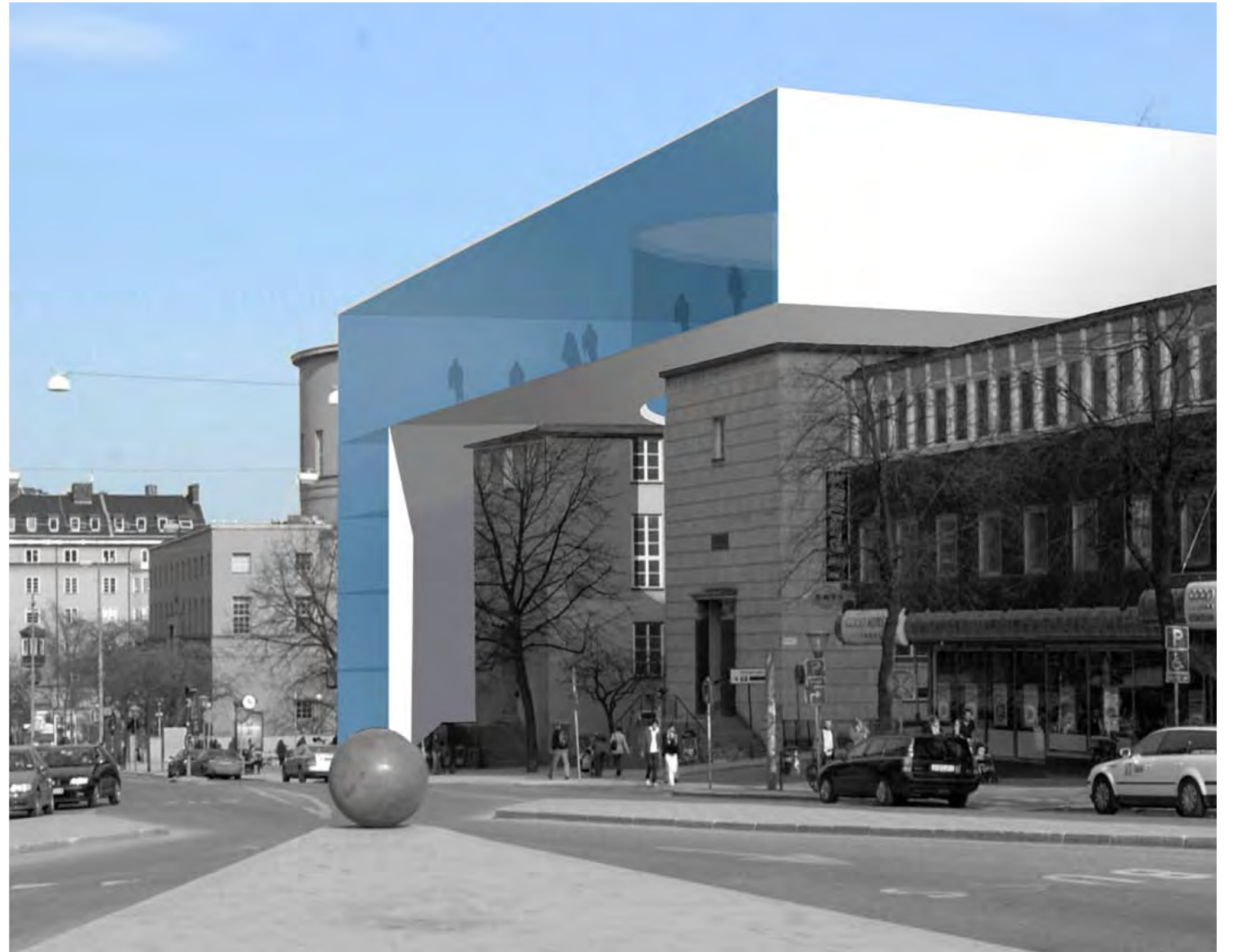


section 1:500

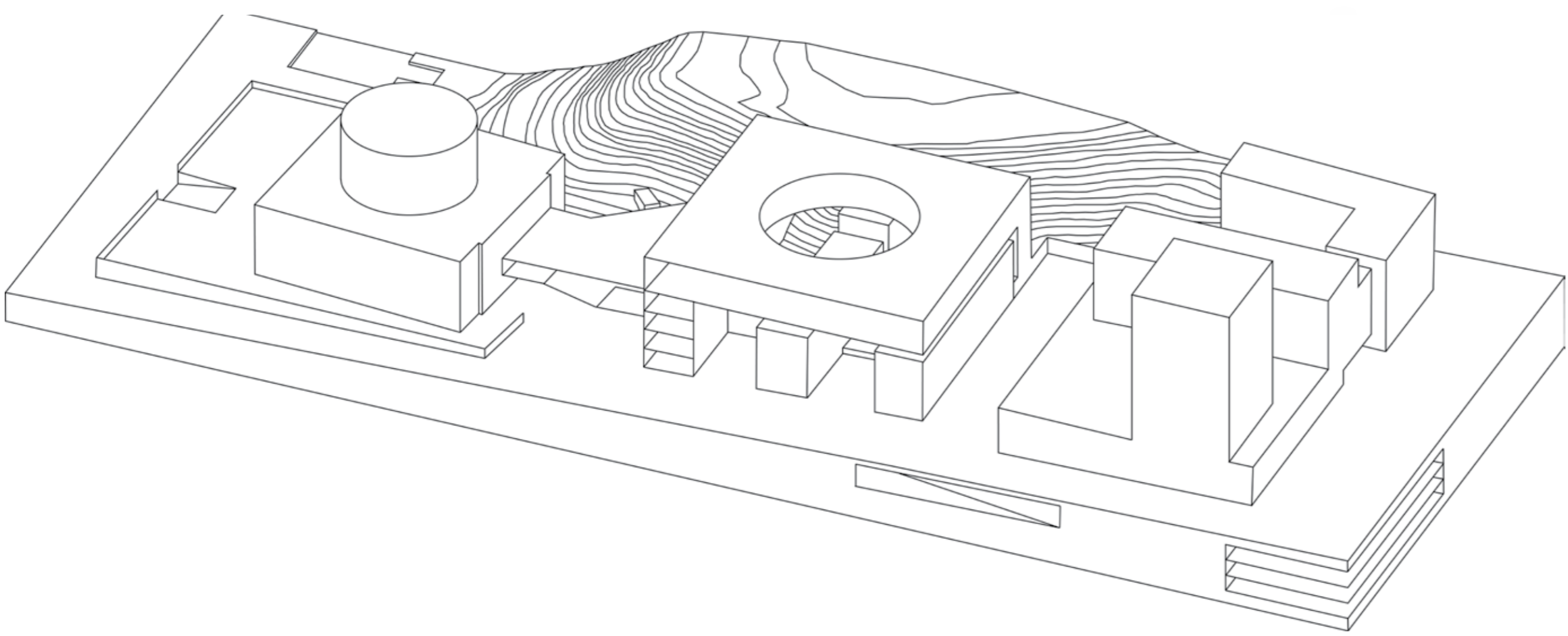


facade from Odengatan 1:500

new extension

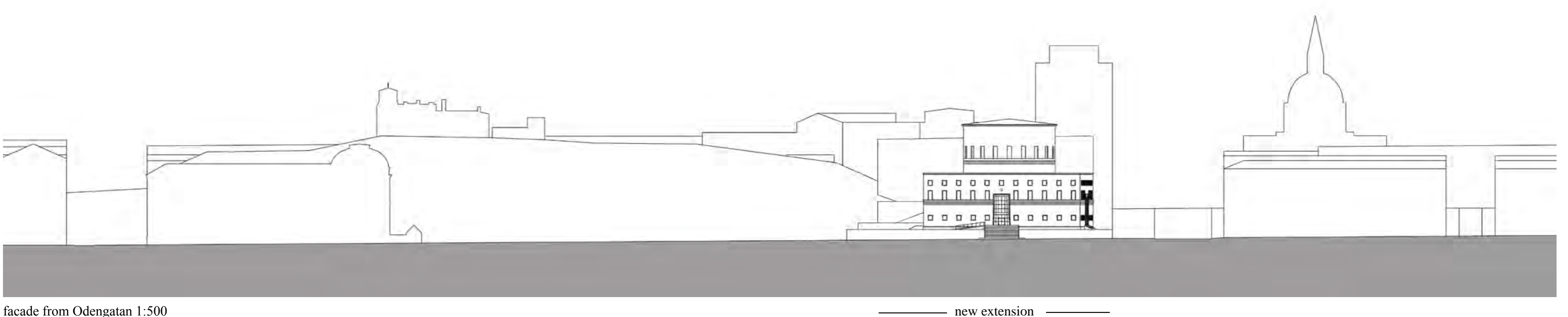


- 1. Main Entrance
- 2. Main Service Entrance
- Commercial Gallery Entrance:
- 3. Gyldéngatan
- 4. Norrtullsgatan, street level
- 5. (Planned) Underground Shopping Centre Level
- 6. Commercial Plinth
- 7. Library Related Programme
- 8. Rotunda Floor level
- 9. Auditorium Floor
- 10. Connection between Observatory Hill and Odengatan



**New volume:**

<b>Plinth Volume</b>	
Underground level	3.050m <sup>2</sup>
Ground level	2.250m <sup>2</sup>
Rotunda floor level	2.750m <sup>2</sup>
<b>Middle Volume</b>	
3x1.450m <sup>2</sup> =	4.350m <sup>2</sup>
<b>Top Volume</b>	2.900m <sup>2</sup> +
	<hr/> 15.300m <sup>2</sup>
<b>Annex 1 &amp; side building:</b>	3.000m <sup>2</sup> -
<b>Gross Floor Area:</b>	<hr/> 12.300m <sup>2</sup>
<b>MUA:</b>	10.000m <sup>2</sup>



facade from Odengatan 1:500

new extension