

MISSION STATEMENT & CONCEPT

to create a learning environment in which minds are ignited, nurtured and developed from childhood through their entire life span. an addition transparent, translucent and open to its surroundings, accessible visually & physically to the park, the streets, the gardens - all become part of the library atmosphere. high energy in some areas and quiet as a bubbling brook in others.

elements of transparency / openness / cultural & historical value / respect & reverence for nature / all come together to blend and mold the disparate elements of the commercial properties to the west, corner of the block / the asplund library to the east, the esker park to the south & odengatan to the north and with the new library between.

how do we do this and end up with a holistic functioning library as well as completing the full northern boundary of the esker park in a mutually synergistic way by including the commercial & redirecting uses in a more compatible way.

by inviting the esker park in, under & through the atria to odengatan and bringing odengatan into the library by material & landscape continuity, is another activity of the buzzing library on full display to the street inviting one into the landscaped atria w/ water elements meeting places, sitting areas, exhibition space, cafe, umbrellas tables & chairs, information points, light, airy, open, natural, warm & welcoming.

the reading room at the upper most level stays below the crest of the esker and its large elms it is a transparent room hovering over the esker's northern edge as it slides in under & through to odengatan. a bilowy copper roof lightly held up by tree-columns with an elm-like profile.

the maximum glass minimum-metal glazing system allows the park to still have a screened view to the north while allowing the view from odengatan to still see the park & esker through the mostly transparent building, this animating of the place and not obscuring the activity will bring the curious & spark the interests of many.

the enclosed esker / park now becomes a garden but carefully sculpted w/ plants and water elements. the vitrine-like enclosure creates a number of continuous but distinct atria in conjunction with the historic annexes as well as the new fourth annex suggested in asplunds early drawings. the 3 main atria off odengatan become the main side entries to the library thru simple revolving doors or swing doors in good weather. the warmth and coyness exhibited by the people moving, relaxing, meeting, sitting, cafe tables all visible to the street thru the transparent glass atria. the water elements and landscaping soften the spaces.

the historic annexes are to be retained and adaptive reuse with new conditions allowed by new enclosure. no longer exposed to the west & fear of the weather. the annexes will be used for functions that require small spaces or special sound or lighting equipment. annexes will also have study rooms and carrels. hvac will be evaluated in light of new conditions. the fourth annex (new) located as suggested by early asplund drawings is a minor image of adjacent annex but made of spray yellow glass w/ rustication indicated by the glazing members.

the atrium at the link is simply a roof at parapet level of asplund and two walls at the juncture lines of fourth wing of asplund simple open bridges span between the buildings as needed. book transport moves through the linking atrium also.

the south atrium allows the esker comes into the library and the floor levels all look into & thru the atrium to the esker/park as well as to the north thru the entry atria & to odengatan. the main loft levels of the building kept behind the annexes. a clean floor to ceiling glass w/ heavy floor plates of concrete w/ articulated shearhead columns. open and flexible.

the west entry from nordtullsgatan & beyond is tied to the entry from the trams & trains-shopping it requires collaboration from folkson. a series of platform steps w/ small support shops rising up to levels 23.45 & 26.65. requires a new entry along street through the existing building.

the diligenta and folkson occupy an important position on the north west corner of the district around the park (and adjacent to the odengatan with location and the height already going for it, it needs added height/function/artistic light program and you have a focal element symbolizing mans eternal search for truth and knowledge- the commitment to life long learning. marking the meeting place of the future and completing the enclosure of the district around the park is a tall order.

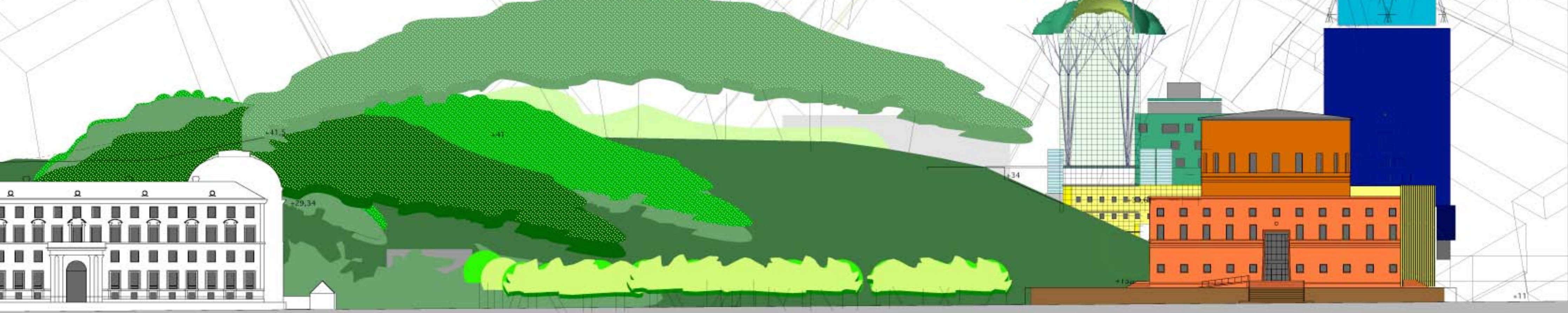
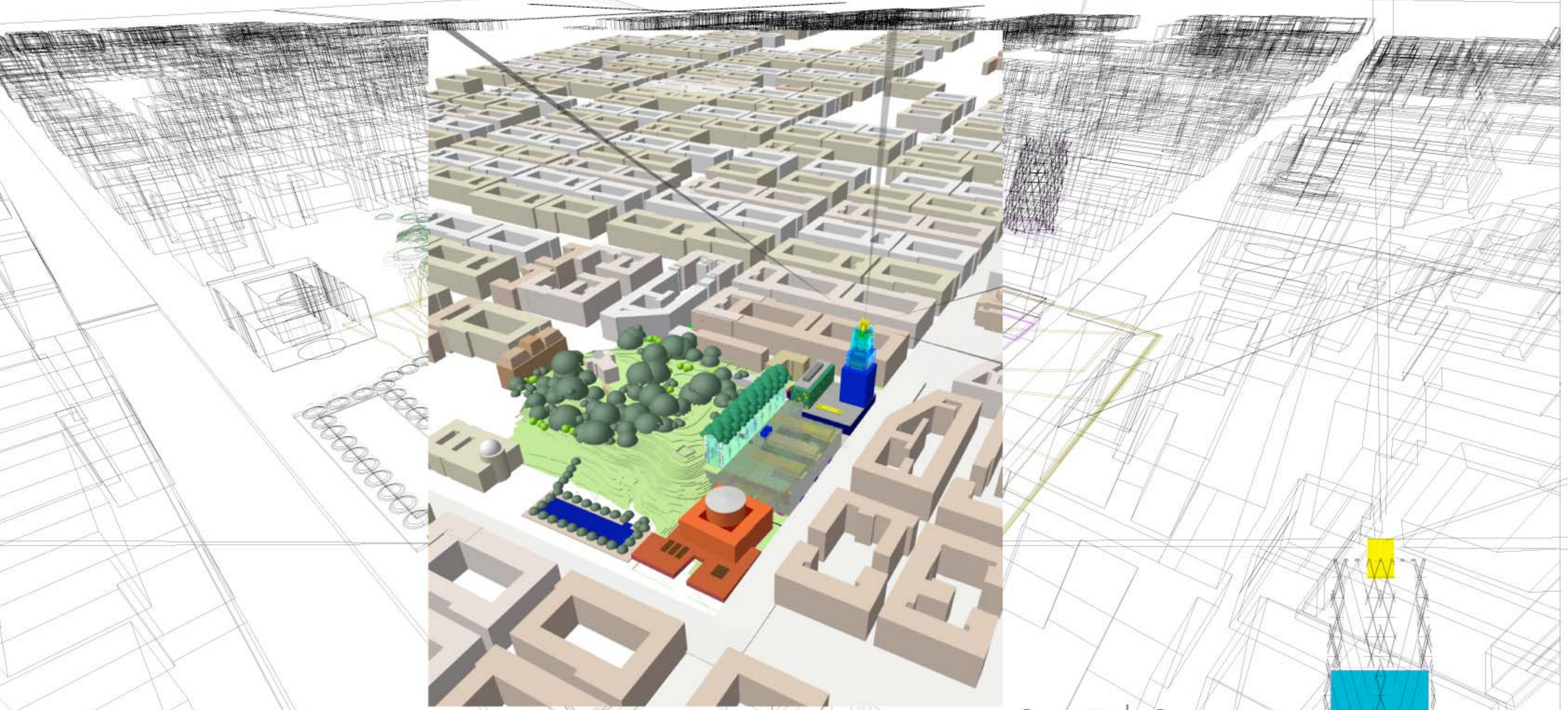
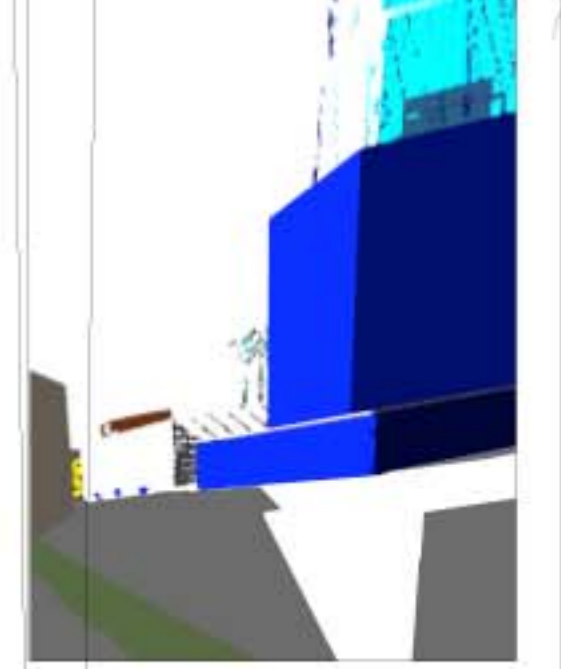
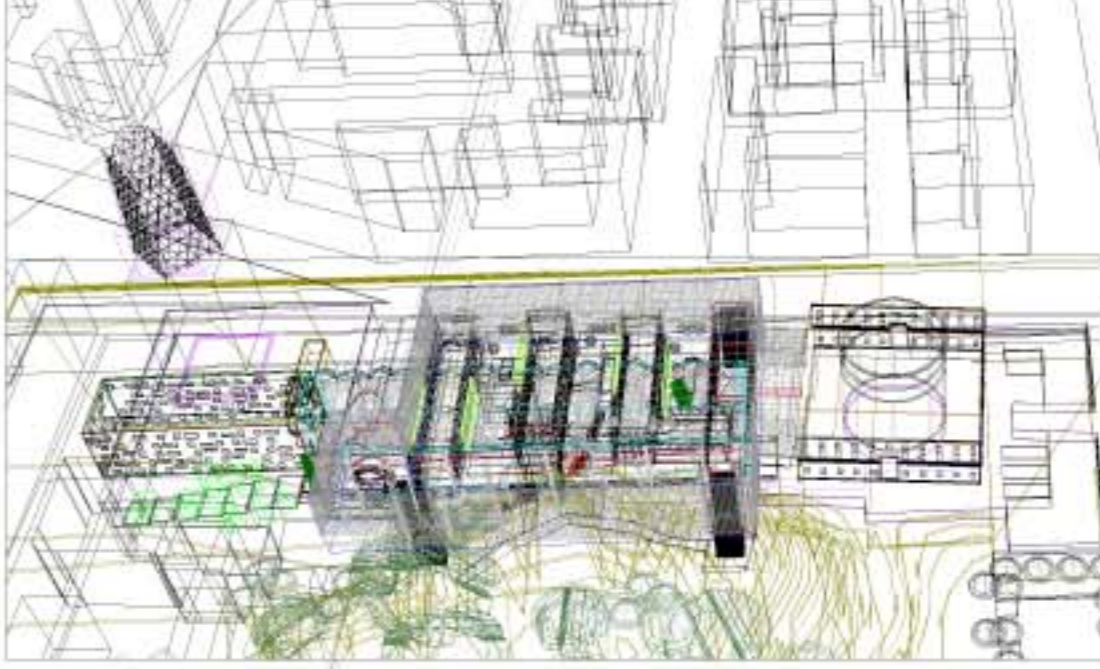
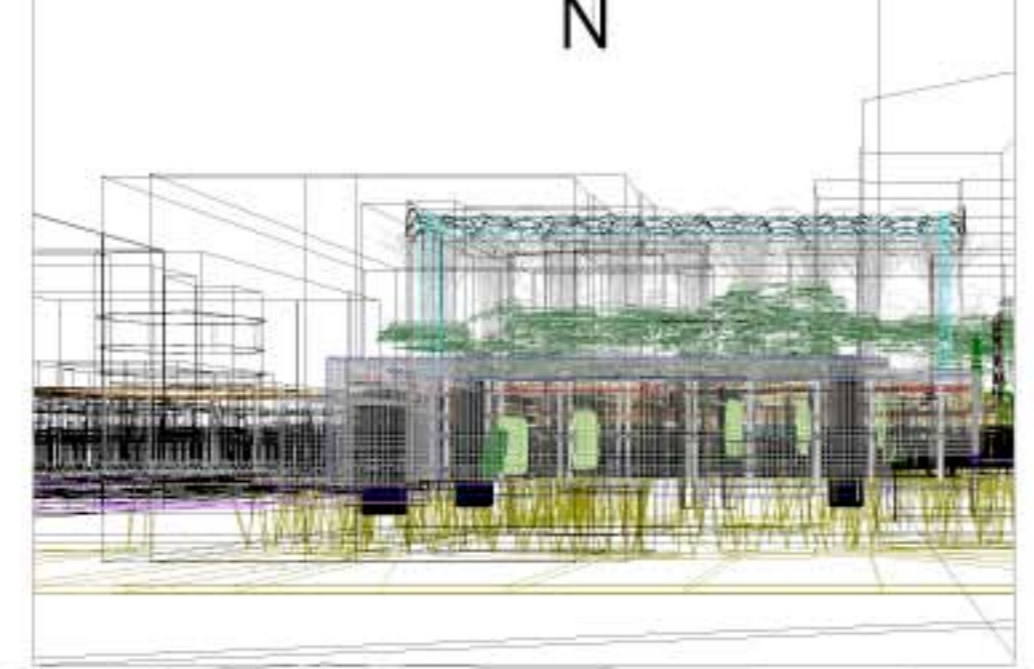
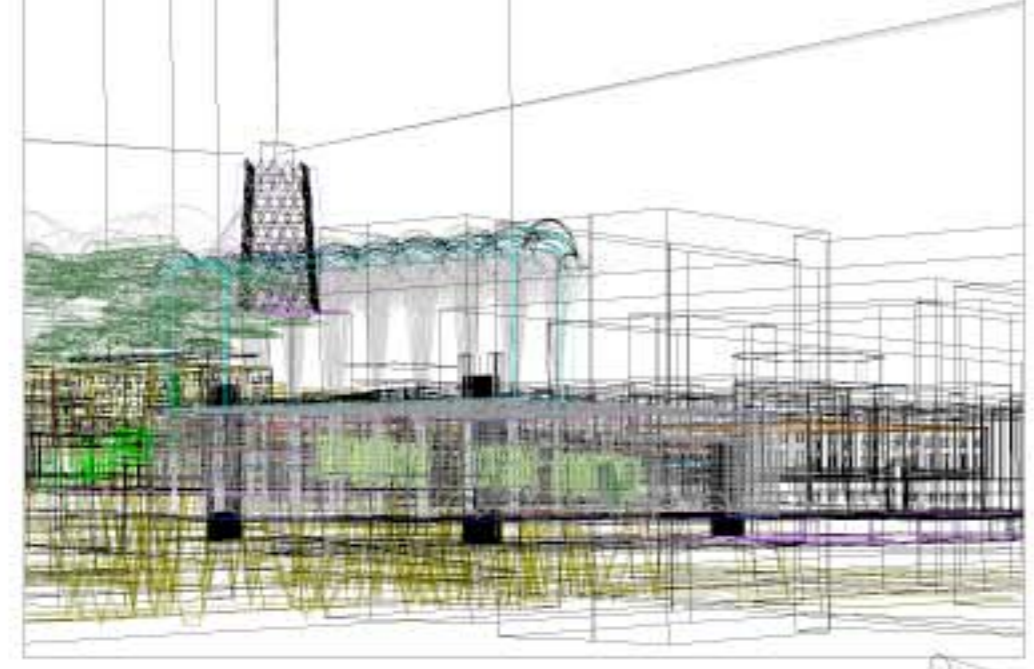
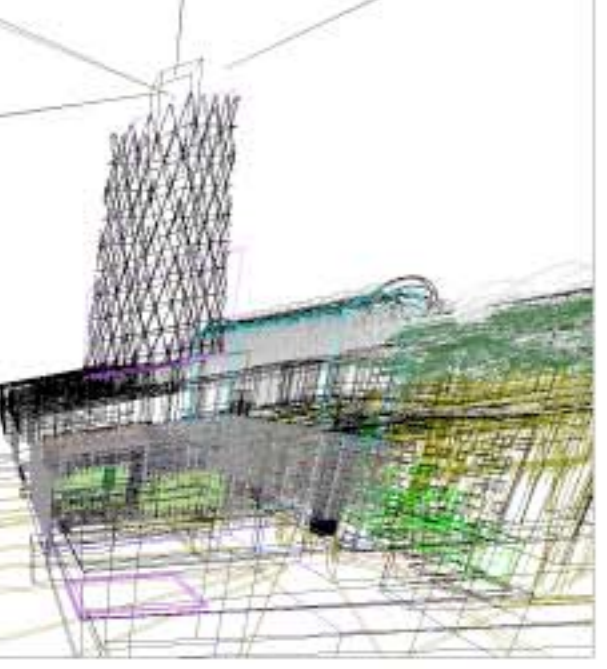
new uses more in keeping with the higher education/ life long learning thrust of the district. conference center/ speaker in resident program/ guest housing / studios for public broadcasting / research / specialized learning schools / educational or institute offices and a few suggestions.

the new development for the future in the area assured, a collaborative effort- a renewal, redirection and re-evaluation of uses for diligenta/folkson could be a new asset to the whole districts sense of place. the renewed buildings, integrated with the surrounding structures forming a new symbol for the right ways of stockholm, a beacon searching the right heavens for knowledge, inspiration, hope, clarity, vision, insight- a welcome marker for the odengatan & life long learning center.

materials- landscape / exposed concrete / glass / steel / copper and natural woods and stone.



SITE PLAN



STOCKHOLM LIBRARY COMPETITION 2006

ALL IN SQUARE METERS GROSS DILIGENTIA & FOLKSOM NOT SHOWN

BAZAAR BAZAAR ASPLUND ANNEX 1 ANNEX 2 ANNEX 3 ADDITION ATRIA

ROOF DECK AREA NOT SHOWN BUT PART OF USE AREA / CAFE/GARDEN/INTERNET
STAIRMECH/TOWERS NOT SHOWN

NET AREAS (PSBLE 400) 1000 7500 (6500) 9352 G 4424 G AREA DISTRIBUTION-FLEXIBLE

ENTRANCES	500	VISIT ORIENTED ACTIVITIES	1500
NEWS ZONE	300	PUBLIC AREAS	200
LEARNING ZONE	1500	CAFE	300
STUDIOS	150	RESTAURANT	700
TEACHING	200	DEPOSITORIES	1000
LECTURE HALLS/AUDITORIUMS	500	LOGISTICS/LOADING PLATFORM	200
FICTION	1500	MEDIA MANAGEMENT	850
CHILDRENS FICTION	600	LOGISTICS/LOADING PLATFORM	200
FOREIGN LANGUAGES	1900	CARE TAKERS OFFICE & PROP. SERVICE	500
ARTS	1800	ADMINISTRATION-MANAGEMENT	200
ESTHETICS	700	MARKETING	300
CIVICS	1700	OUTREACH ACTIVITIES	100
NATURE & TECH	1400	REGIONAL LIBRARY	900
PEOPLE & COUNTRIES	1800	STAFF AREAS	800
YOUNG PEOPLE	500	SWEDISH INSTITUTE	1200
		OF CHILDRENS BOOKS	1200

LEVEL 36.00 1166SQM / 885SQM

ELM READING HALL 1166 SHARED BY ALL

LEVEL 32.40 2133SQM ROOF DECK/GARDEN SHARED BY ALL

LEVEL 27.44 2412SQM

FOREIGN LANGUAGES	1900ASP		
ARTS	1800 ANNEXEAST		
LECTURE HALLS/AUDITORIUMS	500		
5145SQM CIVICS (600)			
475SQM NATURE(400)			
573SQM SWEDISH CHILD.		ADMINISTRATION-MANAGEMENT	200ASP
300ASP			
VIRTUAL	200ASP		
OUTREACH ACTIVITIES	100ASP		
REGIONAL LIBRARY	300ASP		
STAFF AREAS	712ASP		

LEVEL 23.65 2445SQM

5145SQM LECTURE HALLS			
475SQM STUDIOS/P 155			
573SQM SWEDISH CHILD.			
LECTURE HALLS	200		
LEARNING ZONE	1550		
STUDIOS	150		
TEACHING	200		
YOUNG PEOPLE	345		

LEVEL 20.45 1338SQM

5145SQM AESTHETICS			
475SQM CARTAKER		306SQM VISIT ORIENTED ACTIVITIES	
573SQM SWEDISH CHILD.		MEDIA MANAGEMENT	850
LOGISTICS/LOADING PLATFORM	150		
ENTRIES	166		

LEVEL 17.25 551SQM

306SQM ARTS			
5145SQM ARTS / AESTHETICS			
475SQM VISIT ORIENTED ACTIVITIES			
ENTRIES	166	AESTHETICS	573SQM SWEDISH CHILD
MECH/SERV	551		
SWEDISH INSTITUTE			
OF CHILDRENS BOOKS	1200* (LEASEABLE)		
* WEST ANNEX ALL LEVELS #3			

LEVEL 14.65 551SQM ATRIA 4424 SHARED BY ALL/PART OF AIR MANAGEMENT

306SQM ARTS			
5145SQM ARTS			
475SQM VISIT ORIENTED ACTIVITIES		MECH	250
ENTRIES	166		
FOREIGN LANGUAGES	1900ASP		
PUBLIC AREAS	200		
INTERNET CAFE/NEWS ZONE	300 ANNEX4NEW (LEASEABLE)		

LEVEL 2 259SQM

306SQM ARTS			
5145SQM ARTS			
MECH	259		
FICTION	1800ASP		
MECH	259		
CHILDRENS FICTION	900ASP		

LEVEL 1 2145SQM DEPOSITORIES 1000ASP

VISIT ORIENTED ACTIVITIES 500

LEVEL 0 1000M

NEWS ZONE/CAFE 300BAZ (LEASEABLE)

RESTAURANT 700BAZ (LEASEABLE)-OPT 400 ADD'L

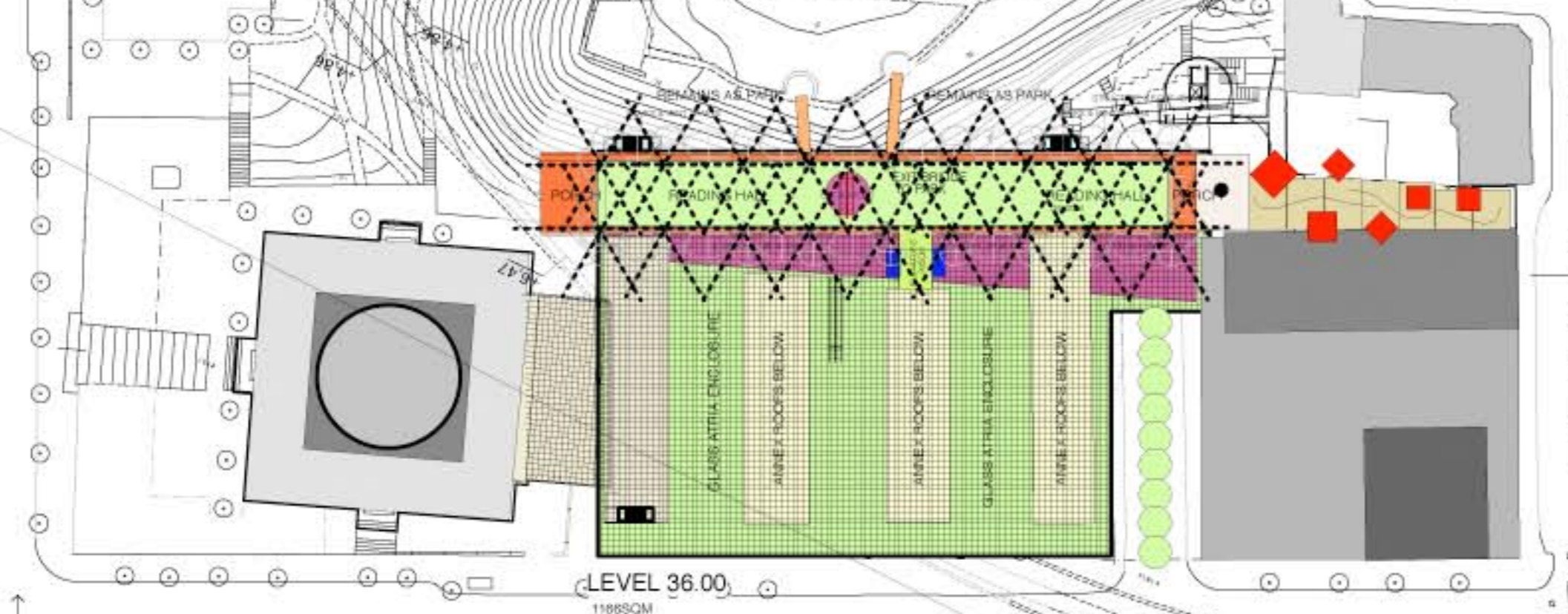
LEVEL -1 FOLKSOM & DILIGENTIA

LEVEL -2 FOLKSOM & DILIGENTIA

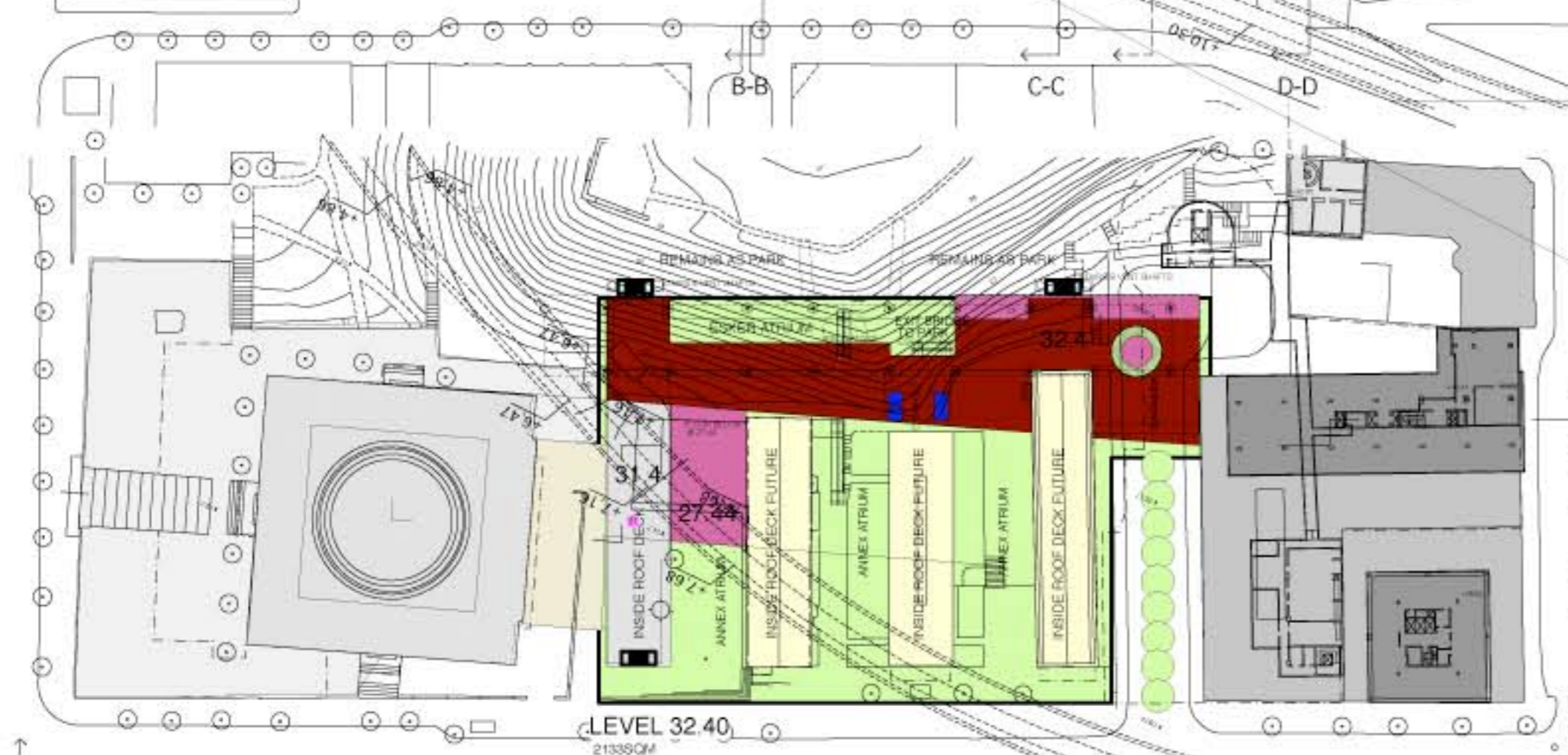
TOTAL 24000 NET



ODENGATAN ELEVATION



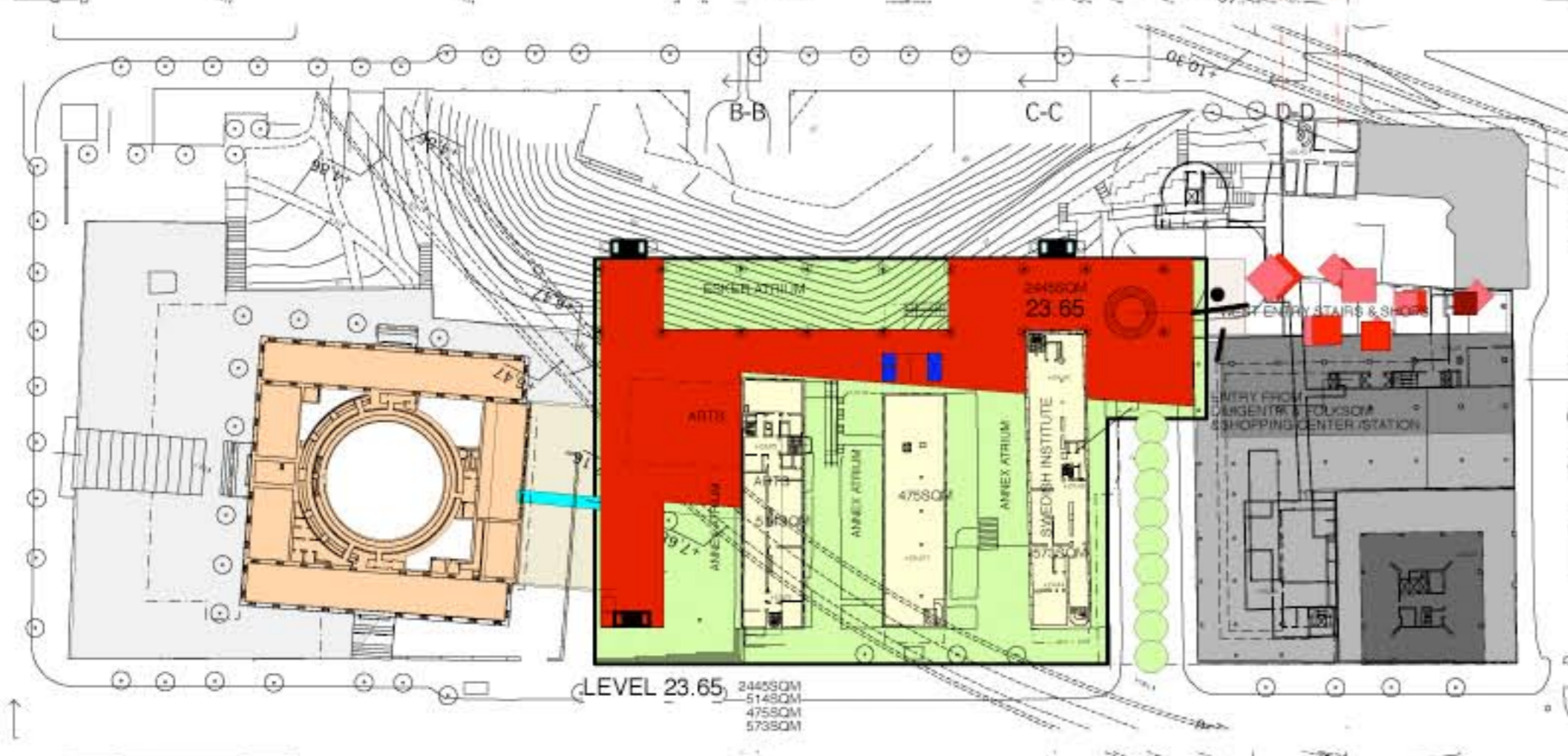
LEVEL 36.00



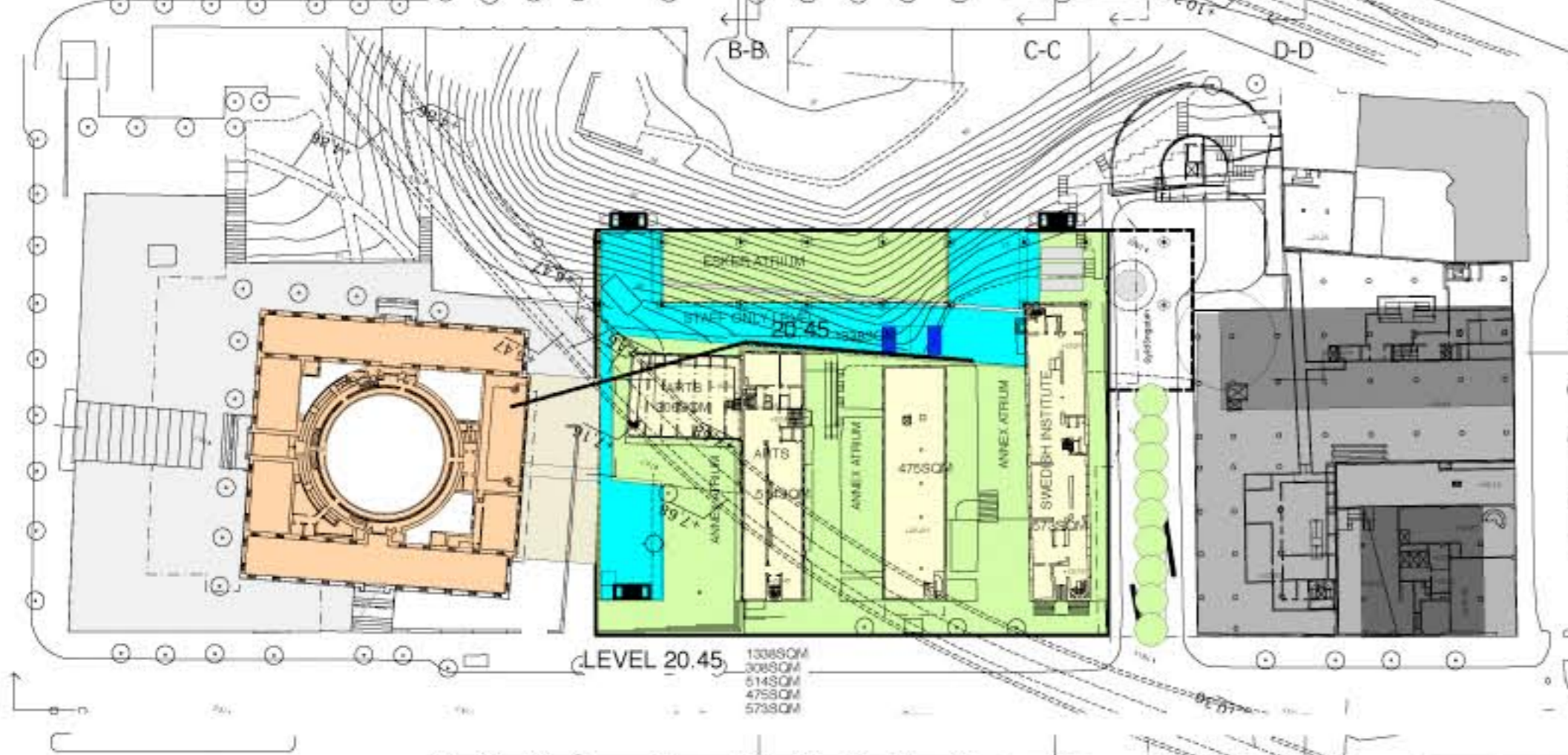
LEVEL 32.40



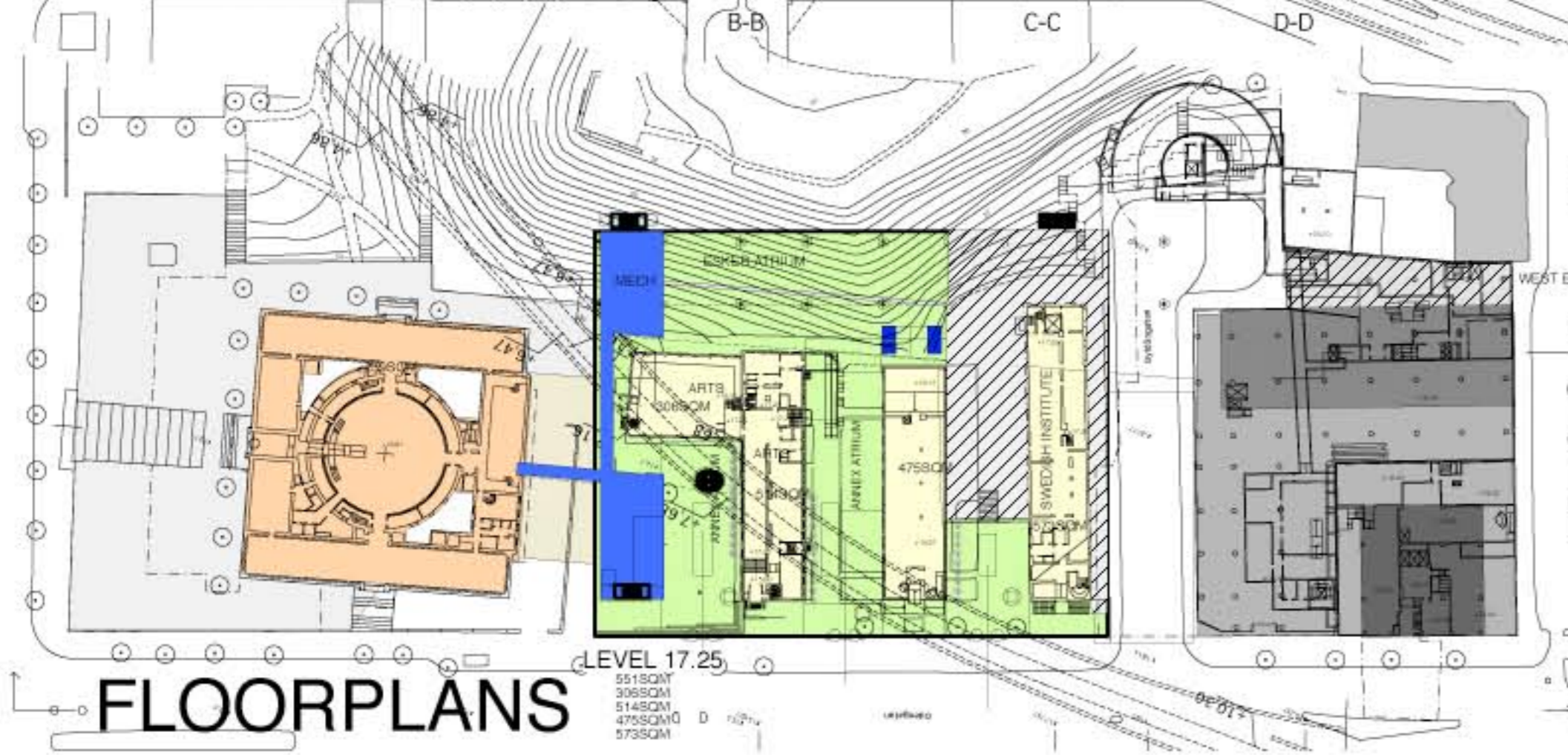
LEVEL 27.44



LEVEL 23.65



LEVEL 20.45



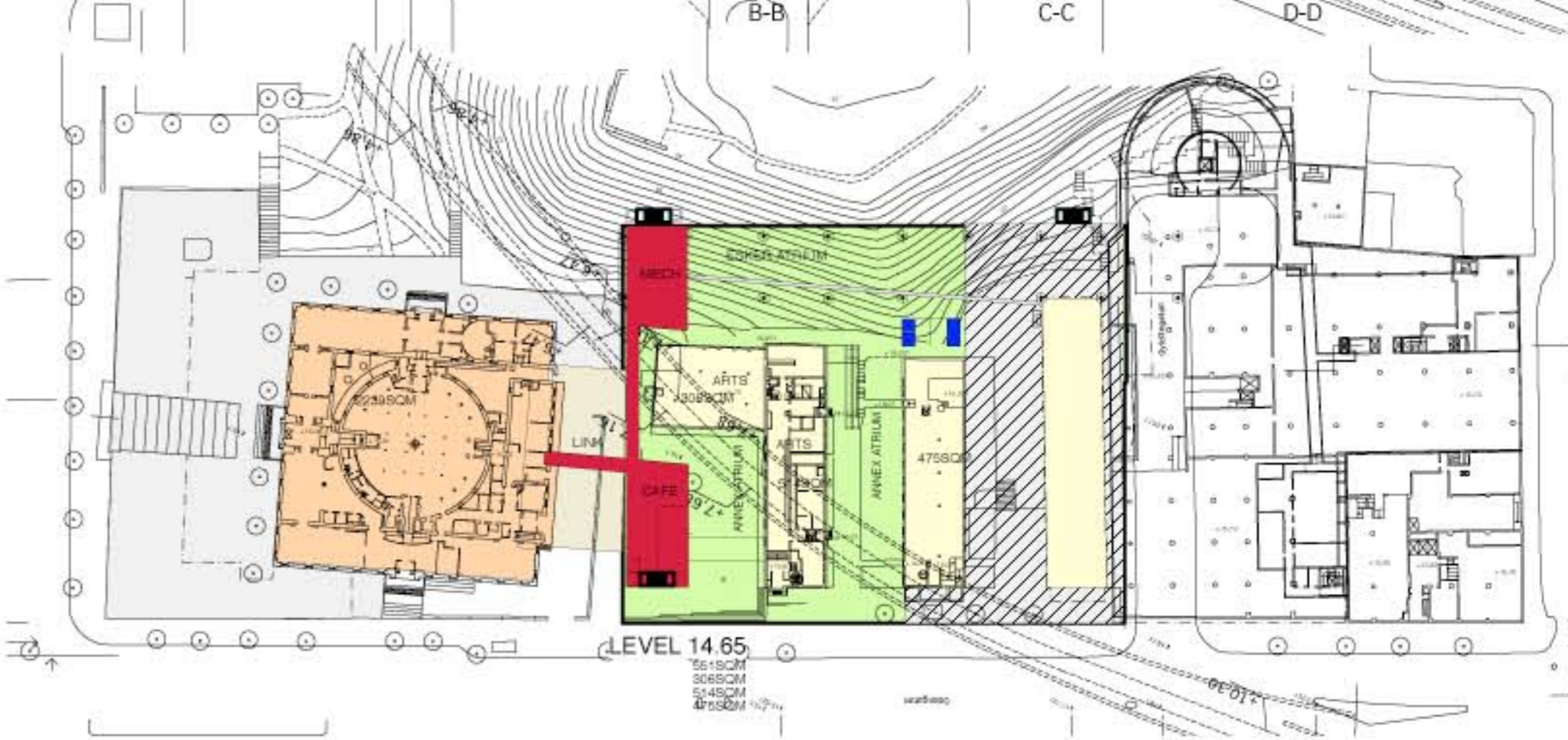
LEVEL 17.25



LEVEL 9.65



LEVEL 12.36



LEVEL 14.65

FLOORPLANS