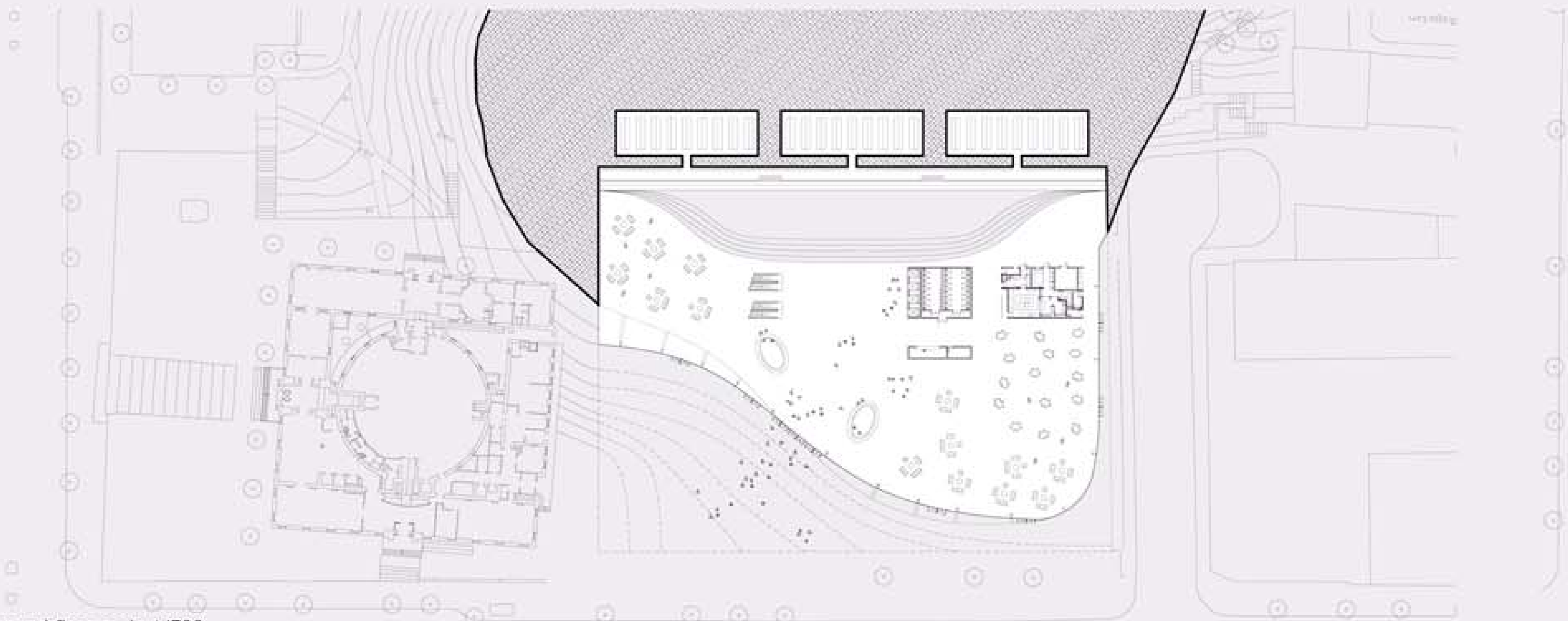




Site plan scale 1/1000



Ground floor scale 1/500

Project is based on two main concept:  
 -First make the relationship between visitor and media a specific trial or experience.  
 -Second: have less impact onto existing landscape and the strong architectural character of Asplund library and still have an original and specific building.

From the outside, visual appearance of the building remains the pure geometrical forms of Asplund's building. Inside, curving surface take place, extending observatory hill's morphologic terrain.

This dual experience, inside outside, of the library's extension strength relationship between the expected and unexpected, the mental vision of culture and his physical media reality.

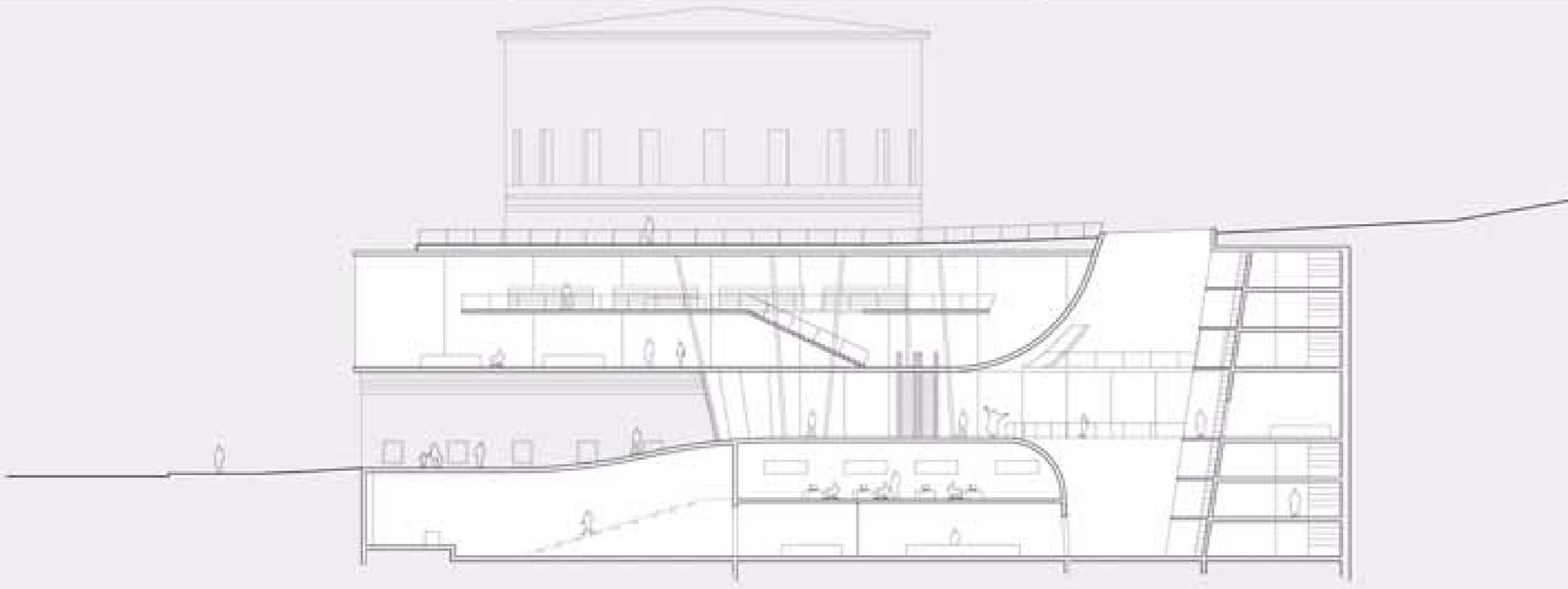
The building groups all new functions around the media wall and present a strong identity unit in concept and materials.

A strong polarity happens between the two buildings, completing and answering each other as knowledges pass on from generation to generation. From this point of view it comes as a strong evidence, that building annexes shall be removed since they are fragments and do not have the modern identity who shall follow new medias.

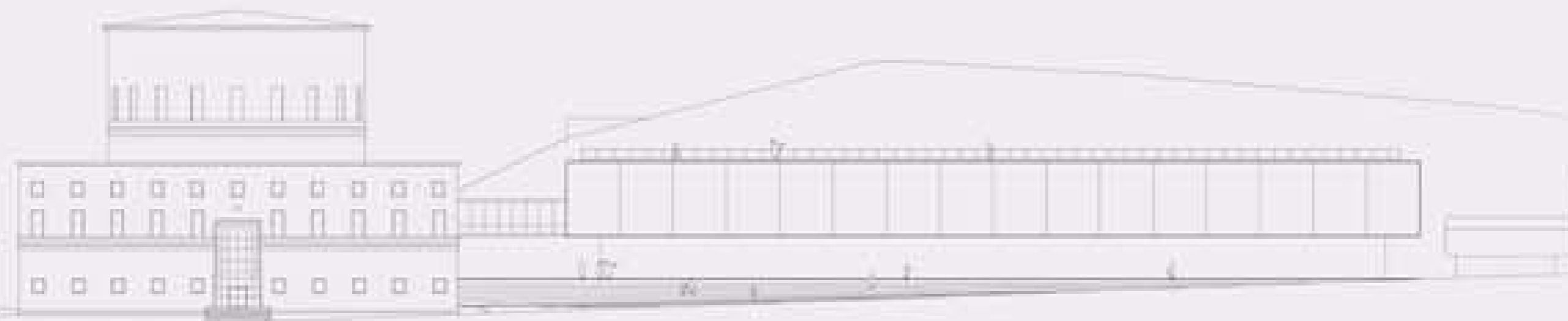
Access to the medias is lived through a meaningful scenography: People's entrance is shaped as an horizontal space sliced between two concrete waves. Medias as cd-rom, microchip, dvd-rom, vhs, books, reviews are stored in a vertical space connecting sky and ground through a light shaft. the main hall take place in the Connection between those two spaces.



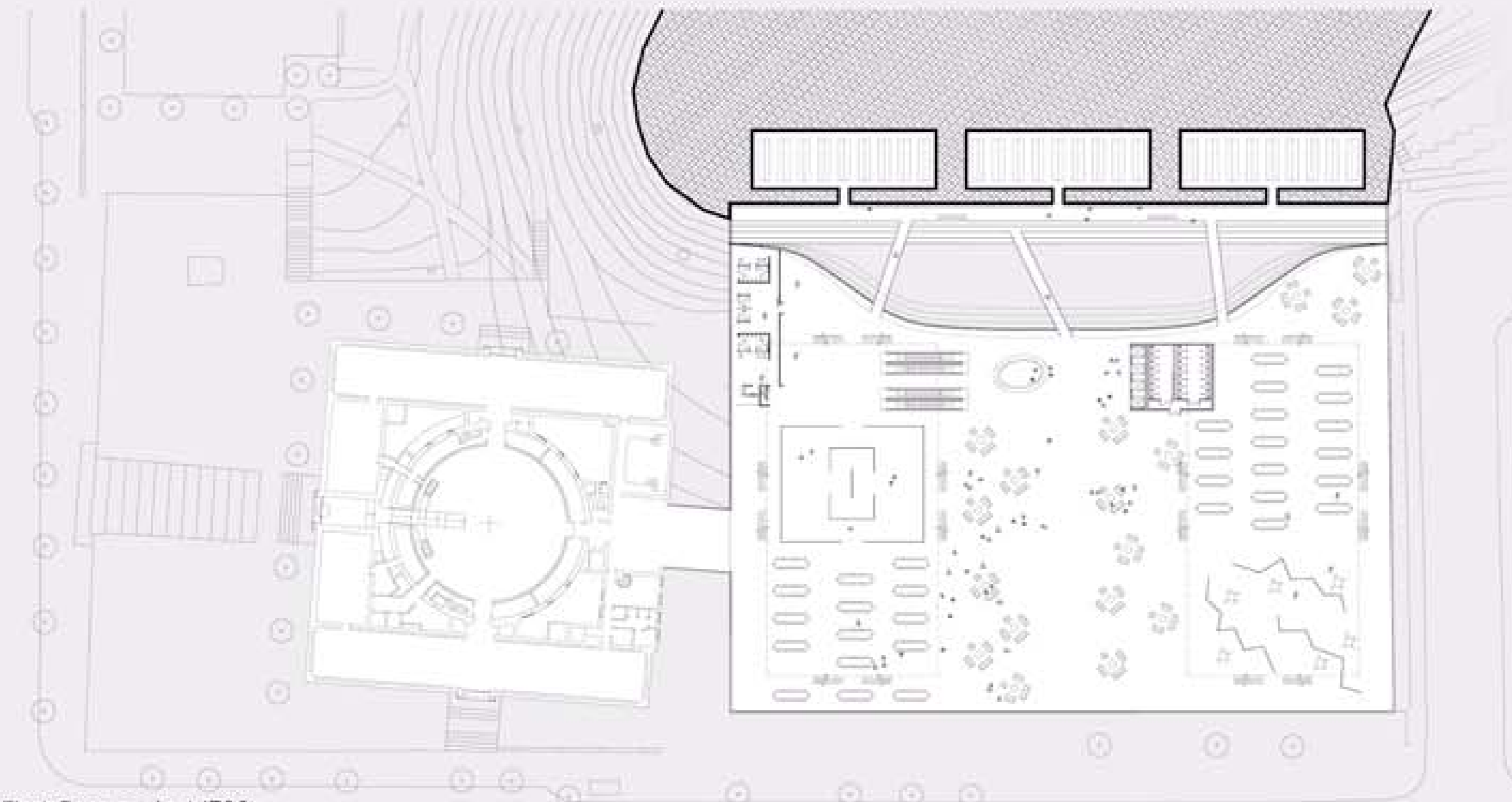
View from Odengatan  
 From the outside, visual appearance of the building remains the pure geometrical forms of Asplund's building.



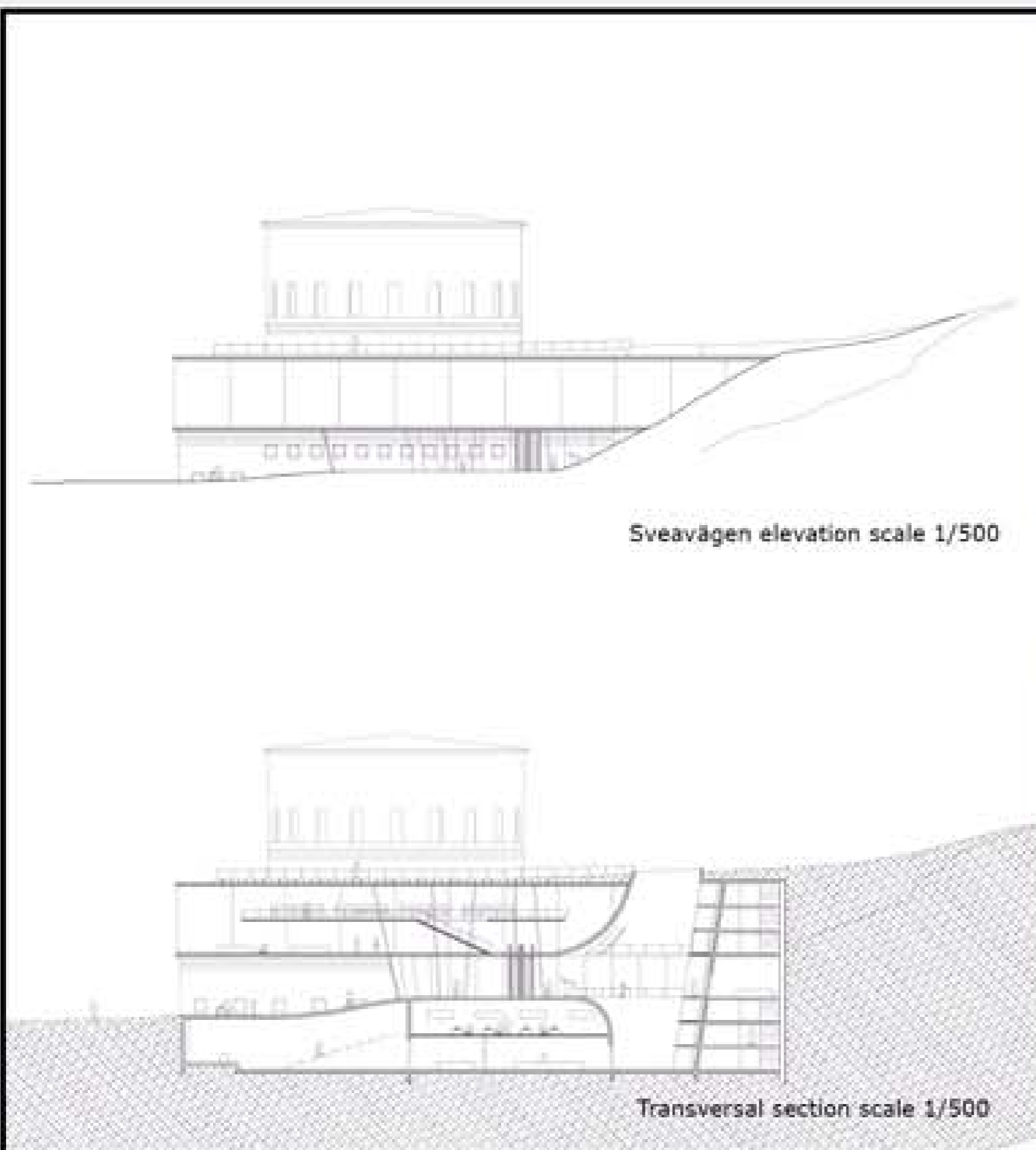
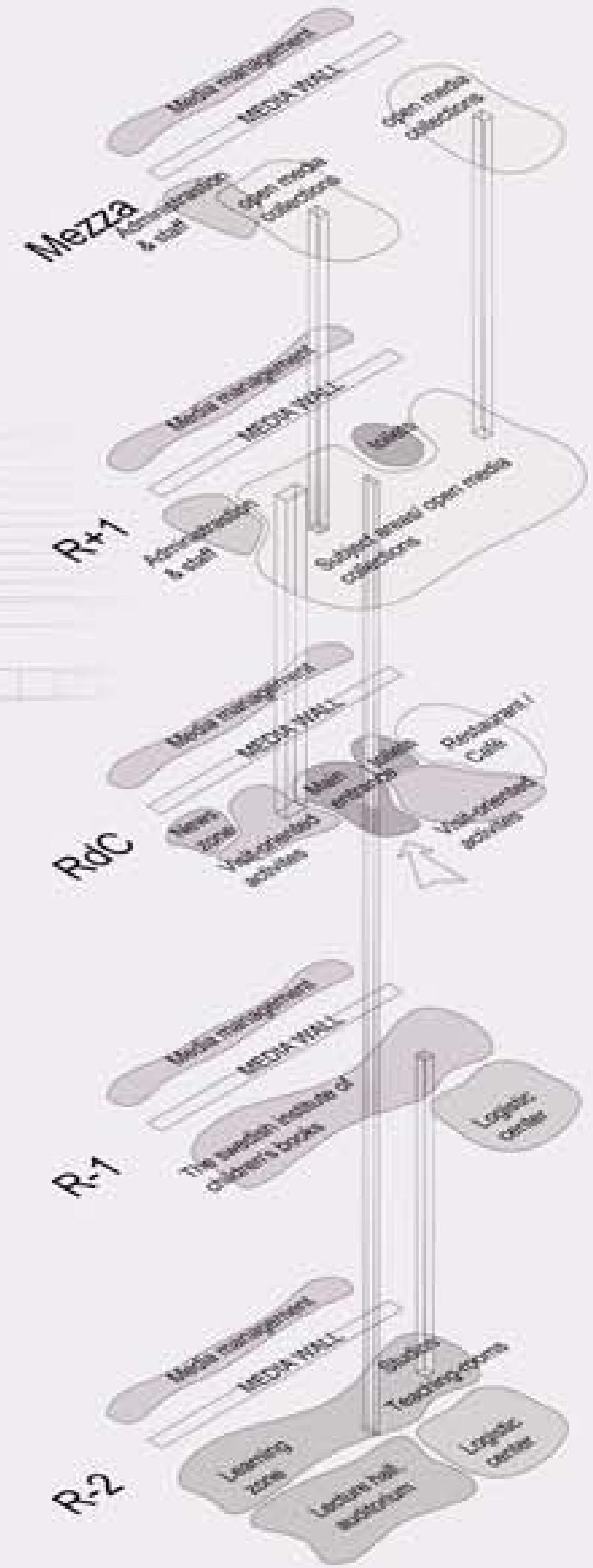
Transversal section scale 1/250



Odengatan elevation scale 1/500



First floor scale 1/500



Sveavägen elevation scale 1/500

Transversal section scale 1/500



View of the media wall  
Medias are stored in a vertical space connecting sky and ground through a huge light shaft