

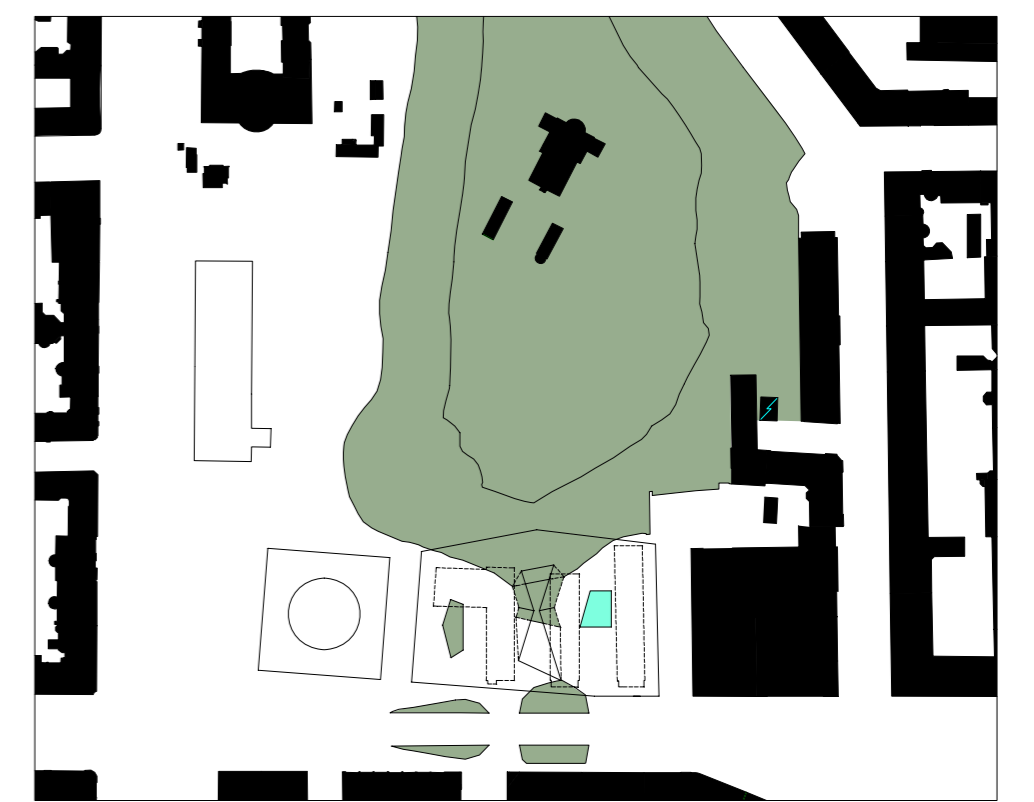
Setbacks and Alignments



Public and Views on Ground Floor



Public and Views above Ground



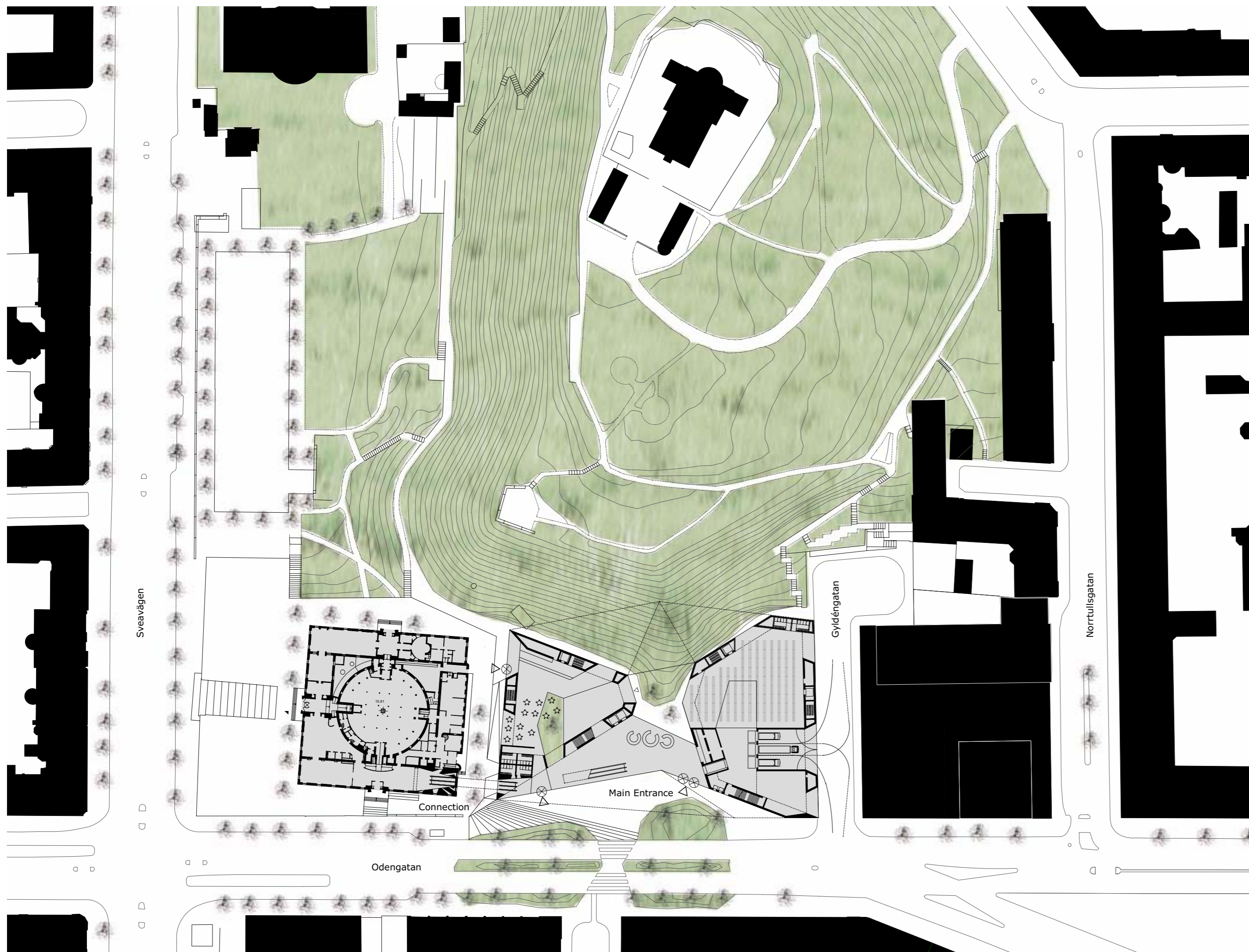
Courtyards and Landscape



Aerial View



Exterior Perspective



Site Plan 1:1000

**PREMISE**

The main concept is to replace the three existing Annexes with a new proposed holistic form, which improves the storage, logistic and circulation when combined with the Asplund Library. In essence, this building will be a representation of the Hill, the public and knowledge all morphed into one single building. It will not compete with the Asplund Library or Hill, but rather respect and acknowledge their presence.

In brief, the new library extension creates a holistic solution in that it encompasses the contextual surrounding by: **REINFORCING** the streetscape in particular the alignment between the Asplund Library and the commercial estate across Gyldengatan; **RESTORING** and extending the lower parts of the Hill into the center of the new extension thereby creating a continuous visual and physical presence of this Hill at anyone point of the building; **LINKING** it the Asplund Library via an underground tunnel; **FINALLY PROVIDING** with a single volume both an efficient circulation system for people and distribution of program and in particular books via mechanical means.

**CONCEPT**

The urbanistic parameters that helped form the envelope of the new library extension are informed by physical, historical, and landscape aspects, existing in the city of Stockholm.

Therefore, the new library becomes an actual extension of the existing fabric of Stockholm, which includes the surrounding streetscapes, the Library by Asplund and the landscape of the Observatory Hill.

With this premise, we will attempt to describe the main principal ideas derived by it's surrounding context which helped develop and structure the fundamental concept behind the proposed new library extension.

**SETBACKS + ALIGNMENTS**

The form of the new library is predominantly shaped by the setbacks and alignments from it's immediate surrounding context.

Setbacks considered within the competition site #2 are several; parallel to the rear end of Asplund Library; parallel to the commercial estate, being the Diligenta and the Folksam across Gyldengatan; and parallel to the contour of Observatory Hill.

Two street alignments along Odengatan were also considered; one from the commercial estate and the other from the slightly skewed Asplund building. Both alignments converge and create the outright position of the building along Odengatan.

In contrast to the ground floor, the façade facing the Hill above the ground floor protrudes outward towards the hill mirroring the hill's contours.

**PUBLIC + VIEWS**

Two other major associated elements: views and pedestrian flow, are also considered in shaping the ground floor facade. Therefore the public will be able to frame the building in their view as they are approaching the new library.

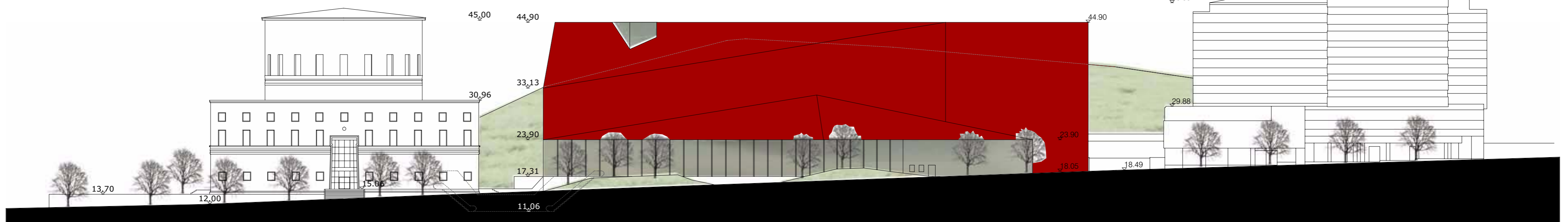
The façade facing the Observatory Hill responds to the contours of the hill by pushing into the center of the new library, whilst the uplift of the external ceiling towards the outer part of the building follows the hill's slope. The angles to the other façades however, are shaped by three alternative ways; by the public approaching from the main intersection between Odengatan and Sveavägen, from the diagonal road off Odengatan and directly across Odengatan. In this case the external ceiling uplift towards Odengatan and the small mounds along the pedestrian path along Odengatan reflects the continuation of the Stockholm ridge, which once resided.

Thus, the compression of both façades creates a didactics between the public's continual desire for knowledge and the preservation of the ridge in a more historical context. Both are related to the history and the preservation of knowledge.

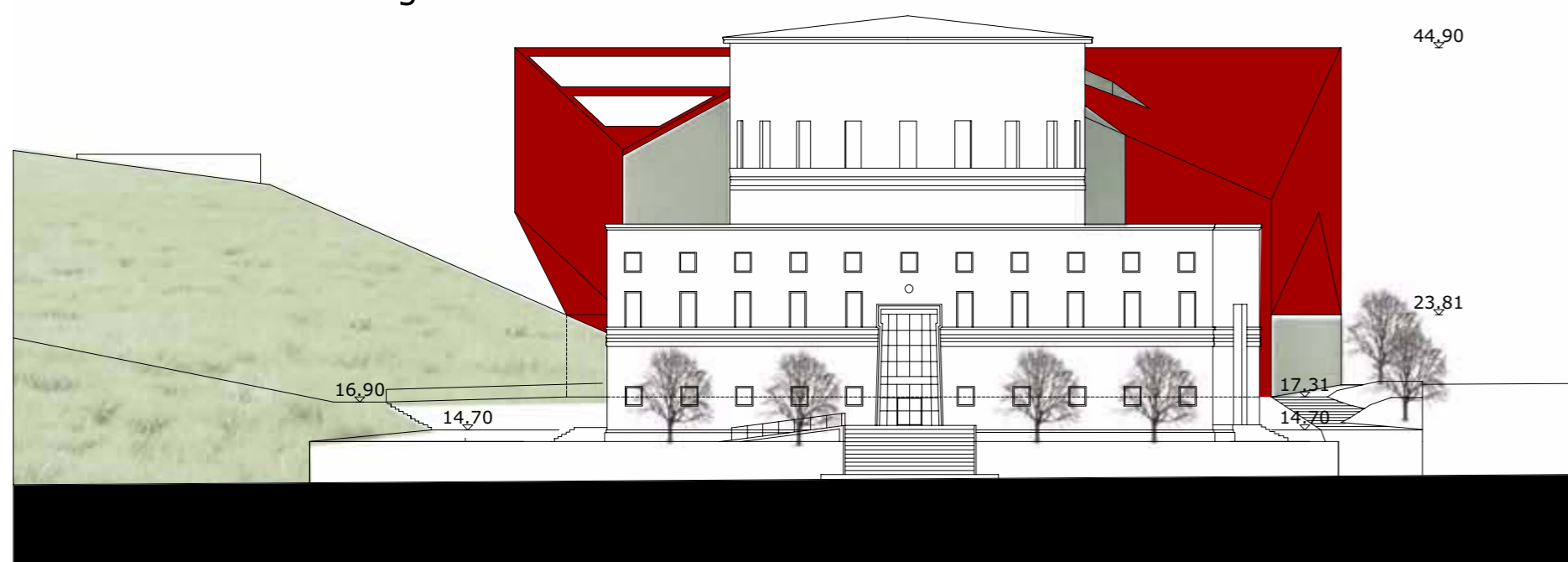
Finally the roof, one of the most crucial parts of the library, responds to it's surrounding context in a more cultural sense. The rectilinear form to the wall and roof runs parallel to Gyldengatan, which is an extension of the commercial estate's morphs into splayed angles towards the Asplund Library. This allows one to maintain a constant visual and rightful respect of the Asplund rotunda in terms of it's physical presence, when approaching by foot either via Odengatan, Odengatan or the Observatory Hill towards the Folksam building.

**COURTYARDS**

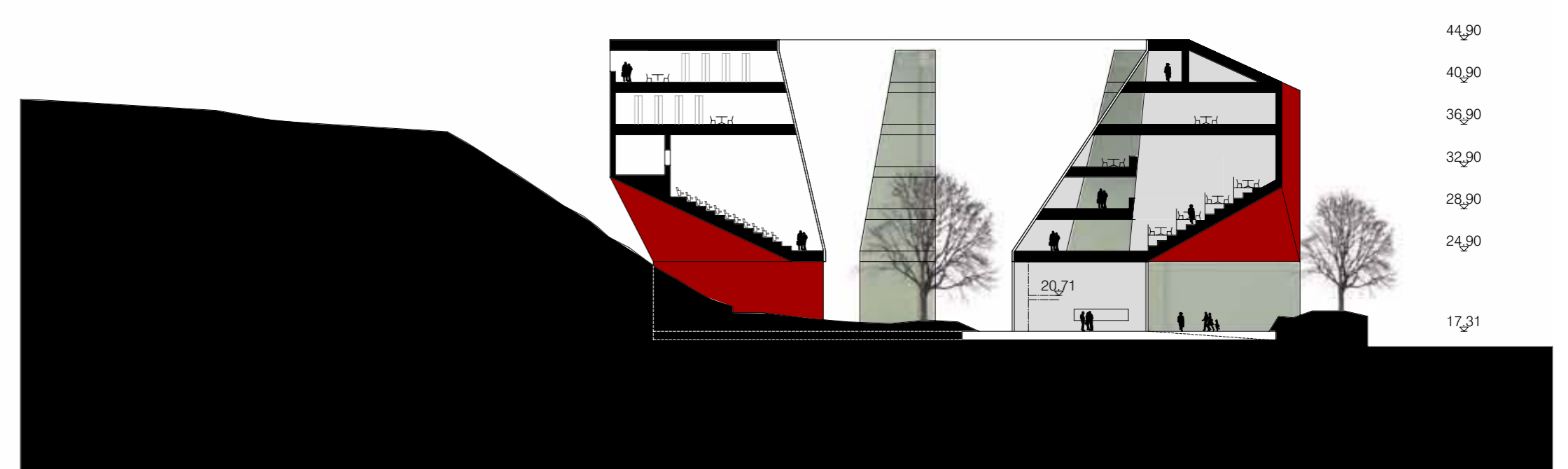
Continuity of what was once was a dominant Ridge in Stockholm is also expressed by extending the Hill within the central courtyard by re-creating an imprint of the ridge in the form of a convex ceiling within the main foyer and central courtyard.



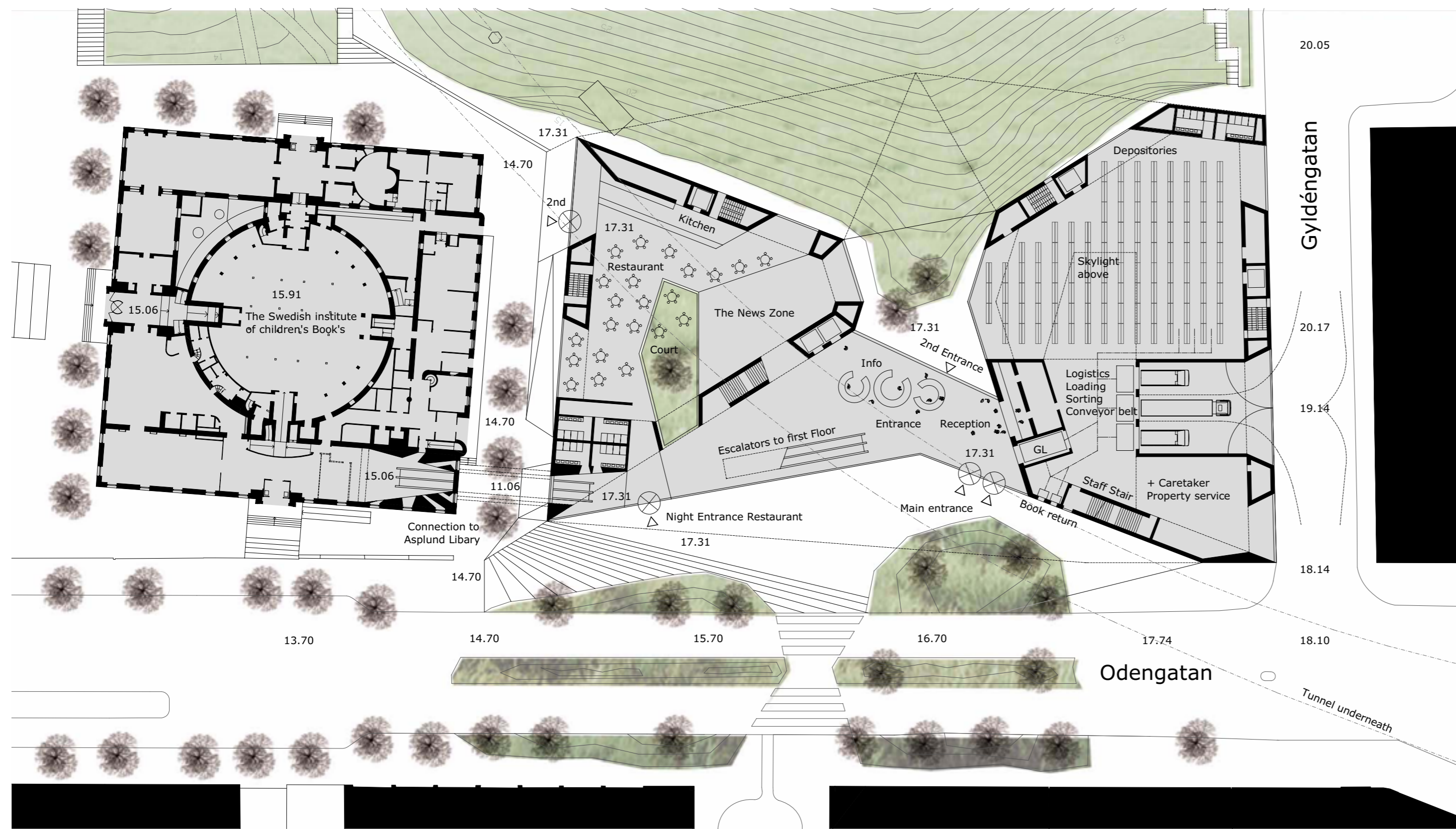
Street Elevation Odengatan 1:500



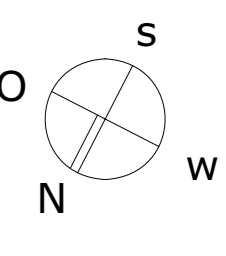
Street Elevation Sveavaegen 1:500



Cross Section 1:500



The vertical distribution of the books is functioning through the Goods Lift and the horizontal distribution is made via Conveyor Belts in the 1m high suspended ceiling across the entrance Foyer through to the Asplund Library via the ceiling of the underground link.

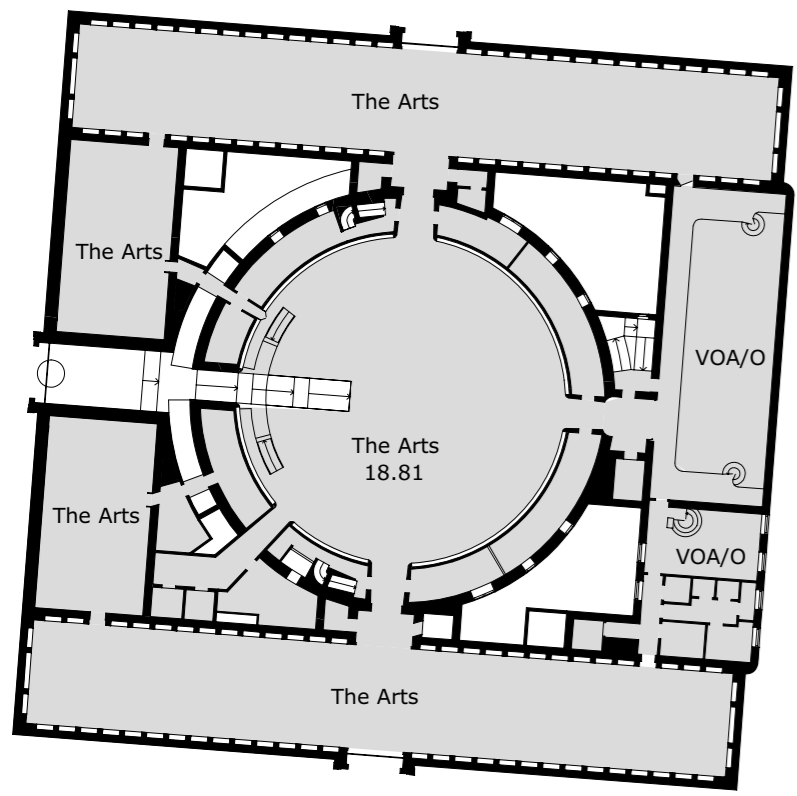


	Asplund Library			New Library		
	FFL	Public Areas	m2	FFL	Public Areas	m2
Ground Floor	& 15.06 15.91	The Swedish Institute of children's Book's	1,200.00	17.31	Entrance and Information The News Zone Restaurant Caretakers office and property services Logistic/ loading platform Sorting machines Depositories	519.00 400.00 700.00 250.00 200.00 157.00 1,000.00
Mezzanine 1	18.81	The Arts Visit- oriented activities and office	1,428.00 223.00	20.71	Caretakers office and property services	250.00
Mezzanine 2	21.42	The Arts Visit- oriented activities and office	186.00 74.00		Toilets over all Floors other public Areas	200.00
1st Floor	23.91	The Arts Visit- oriented activities and office	186.00 74.00	24.90	the Learning Zone Media management Civic Studies Auditorium 1&2 Auditorium Teaching	981.00 855.00 1,700.00 515.00 201.00
2nd Floor	26.40	Visit- oriented activities and office	1,129.00	28.90	Virtual Regional Library Staff Areas Children's Fiction	300.00 300.00 900.00 900.00
3rd Floor				32.90	Marketing Management Outreach activities Nature and Technologies Young People	300.00 200.00 100.00 1,400.00 500.00
4th Floor				36.90	The Learning Zone 2 Fiction Foreign Languages	494.00 1,500.00 1,900.00
5th Floor				40.90	Café Studios Aesthetics People and Countries	300.00 150.00 700.00 1,800.00
		Total Asplund Library	4,500.00		Total New Library	19,572.00
					Total Asplund and New Library	24,072.00

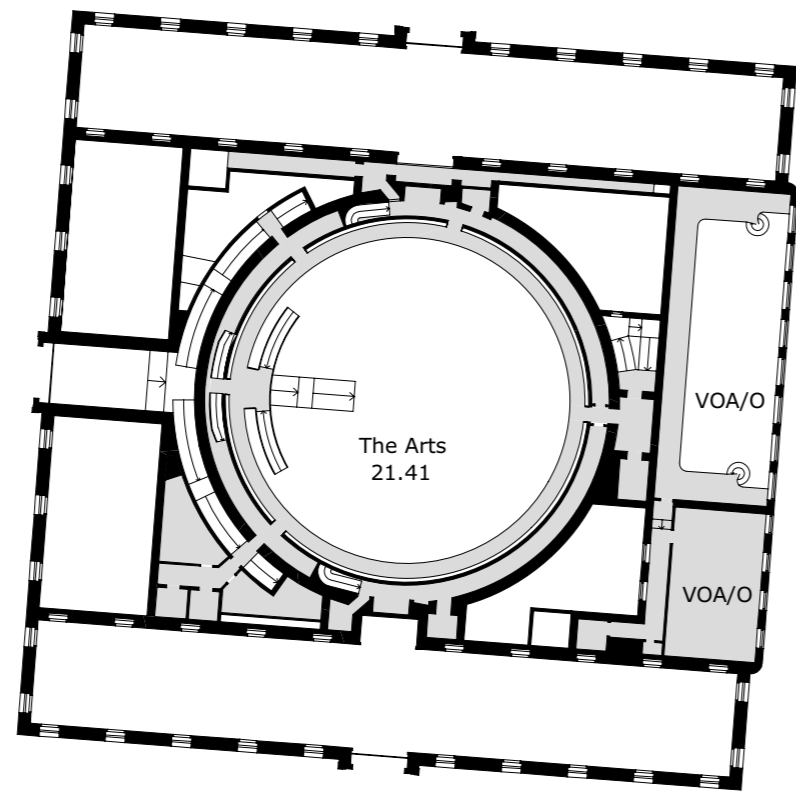
Ground Floor Asplund Library + 15.06 & + 15.91

Ground Floor New Library + 17.31

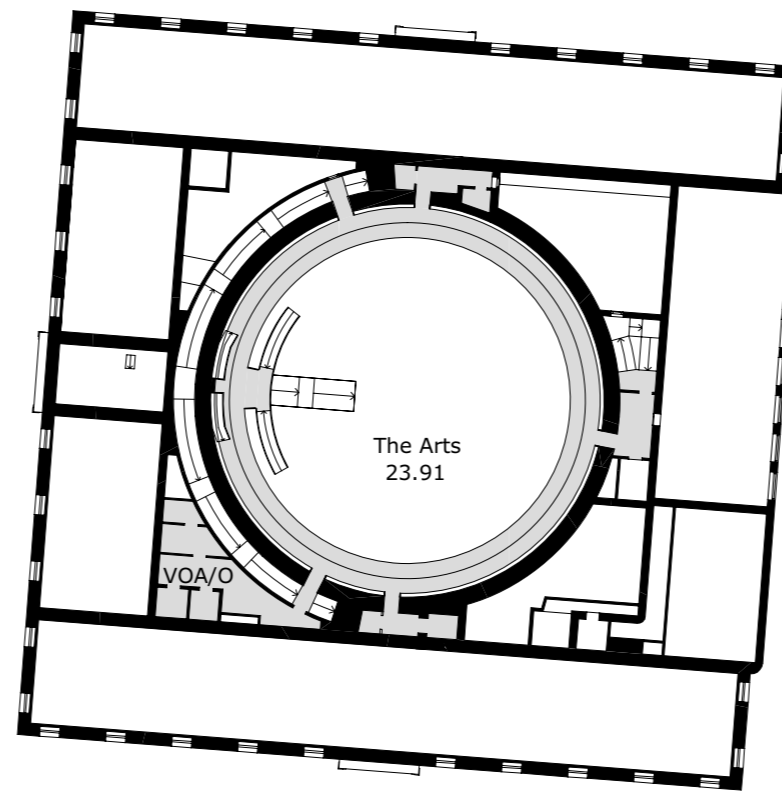
Scale 1:500 Main Useable Area of Asplund and New Library



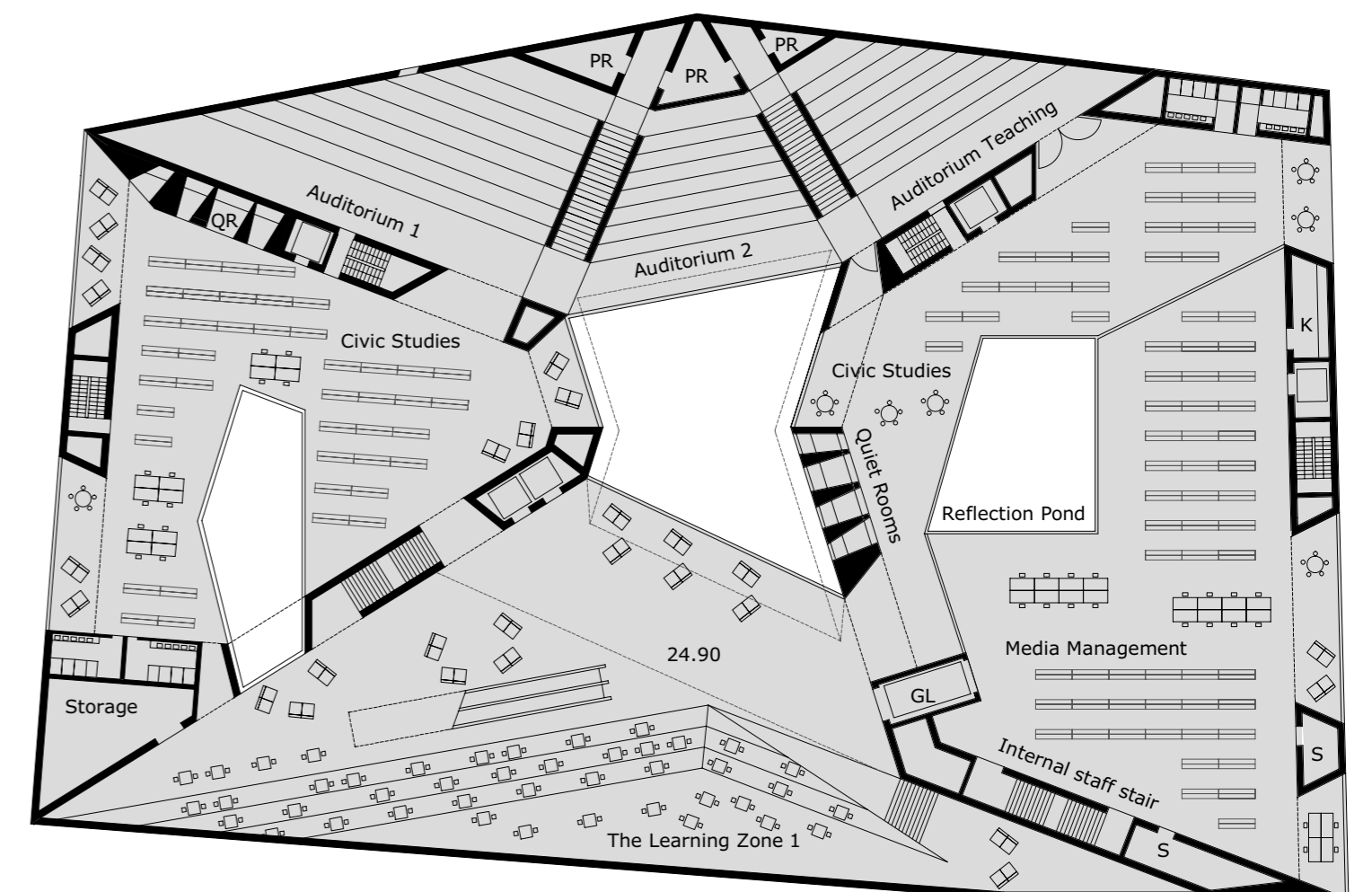
Mezzanine 1 Asplund Library + 18.81



Mezzanine 2 Asplund Library + 21.41

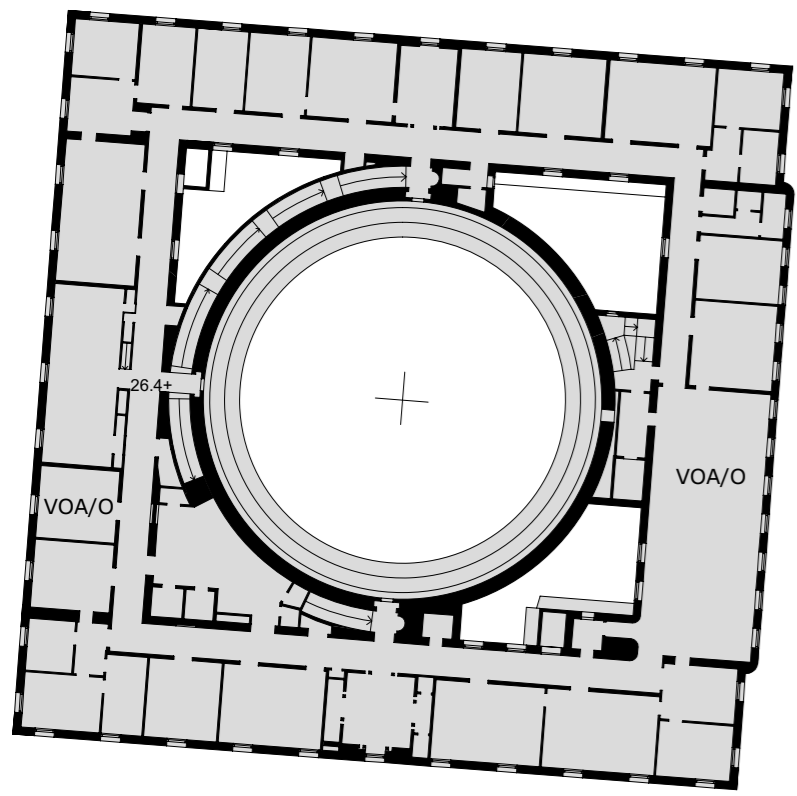


First Floor Asplund Library + 23.91

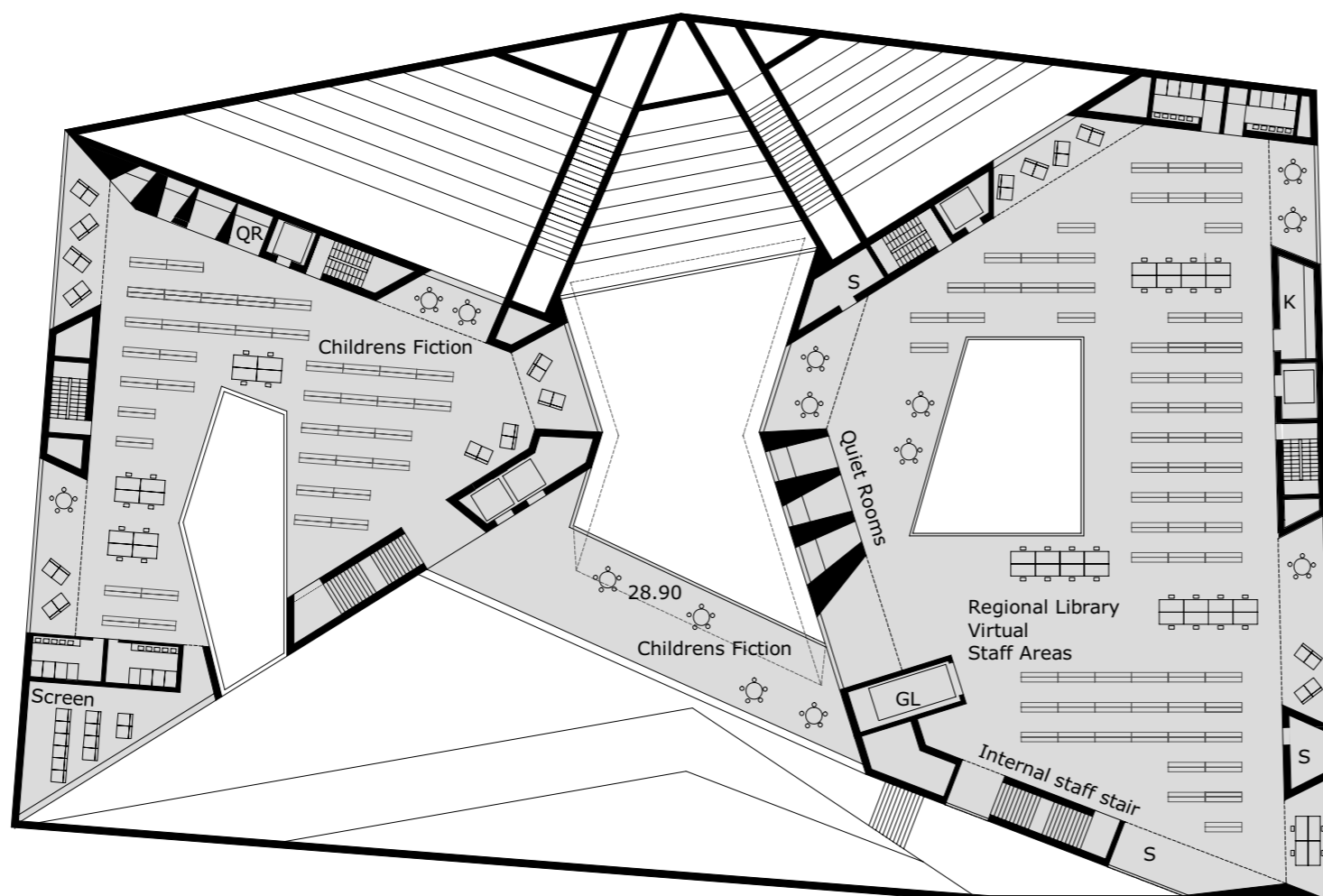


First Floor New Library + 24.90

Scale 1:500

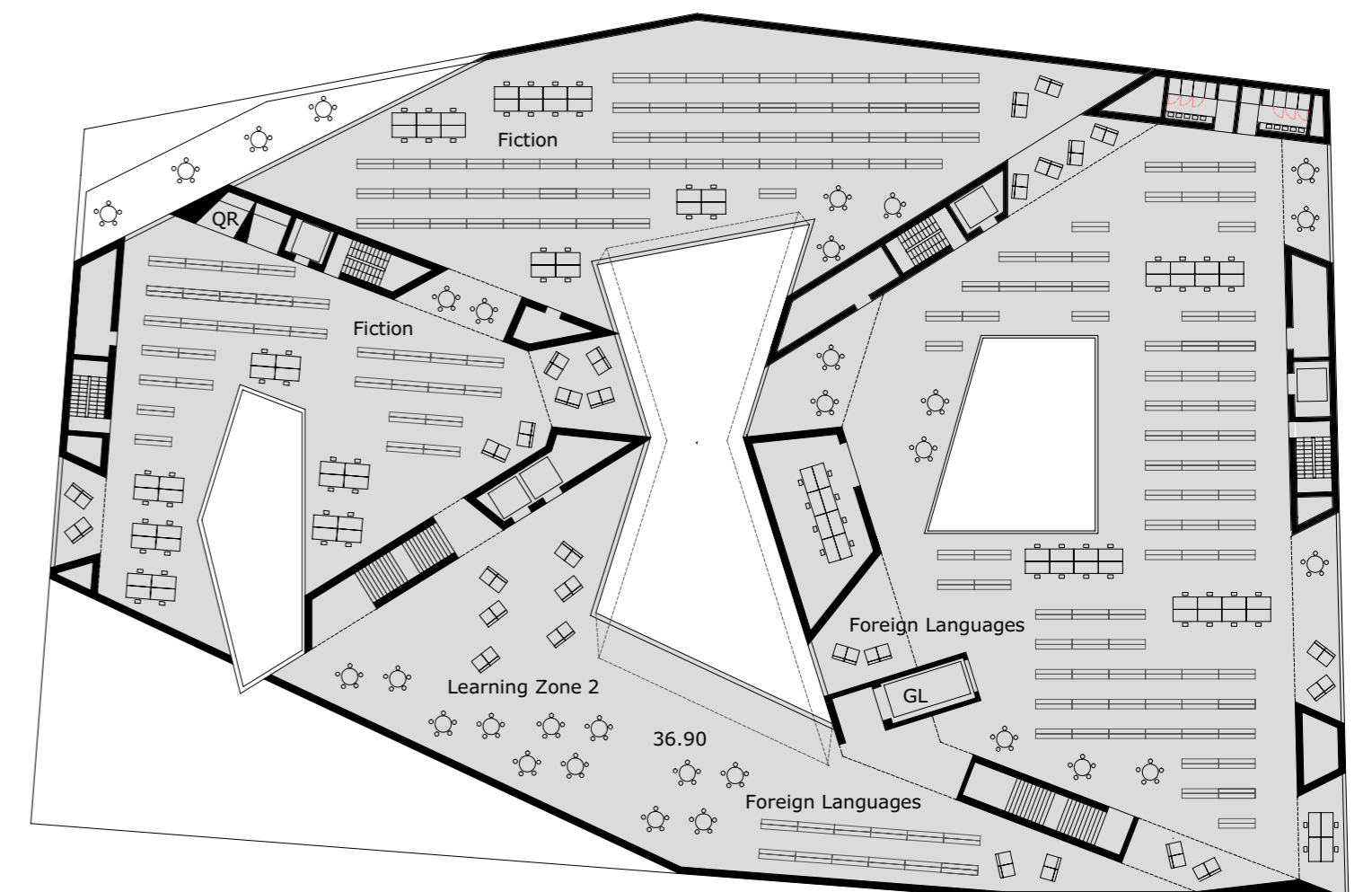


Second Floor Asplund Library + 26.40



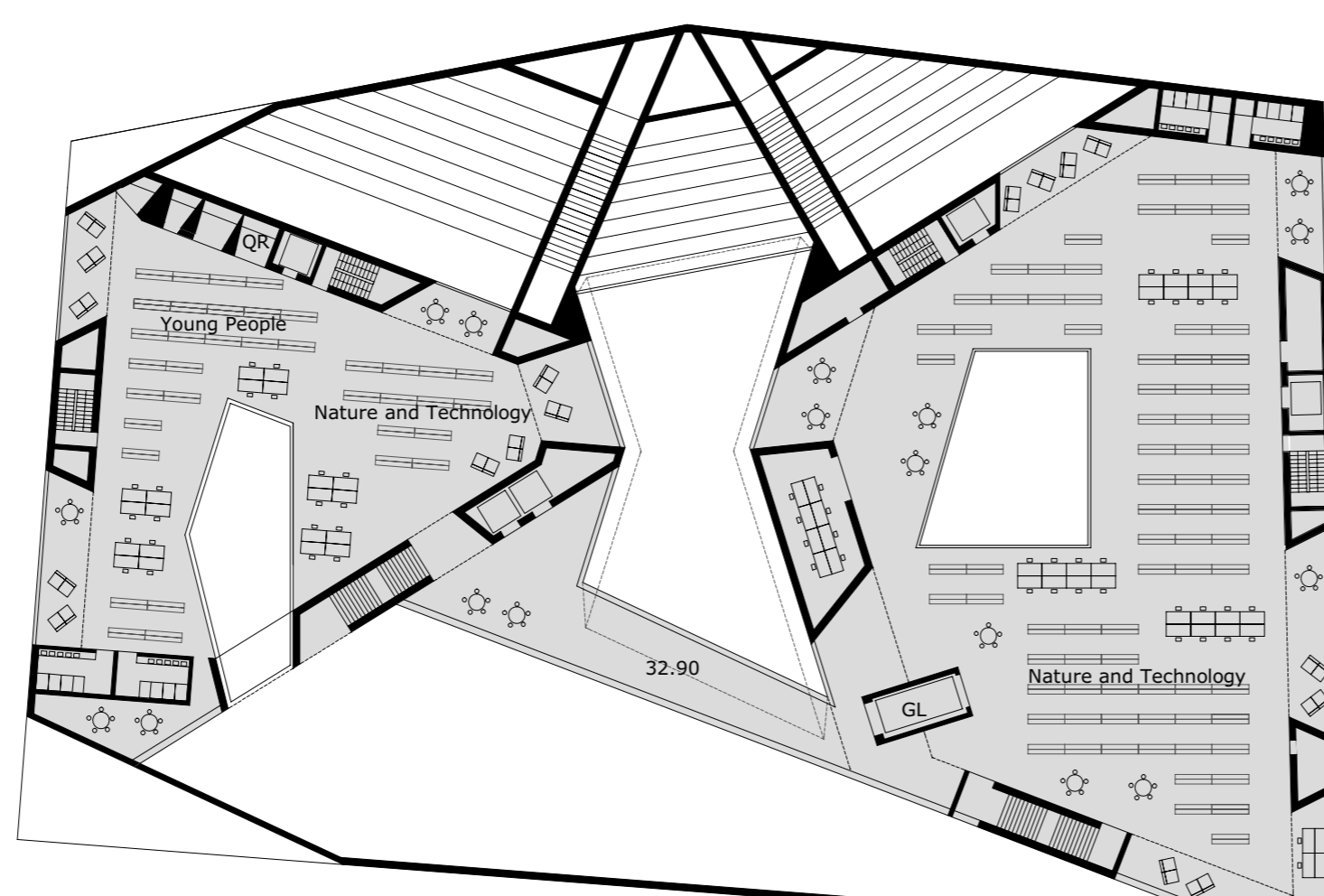
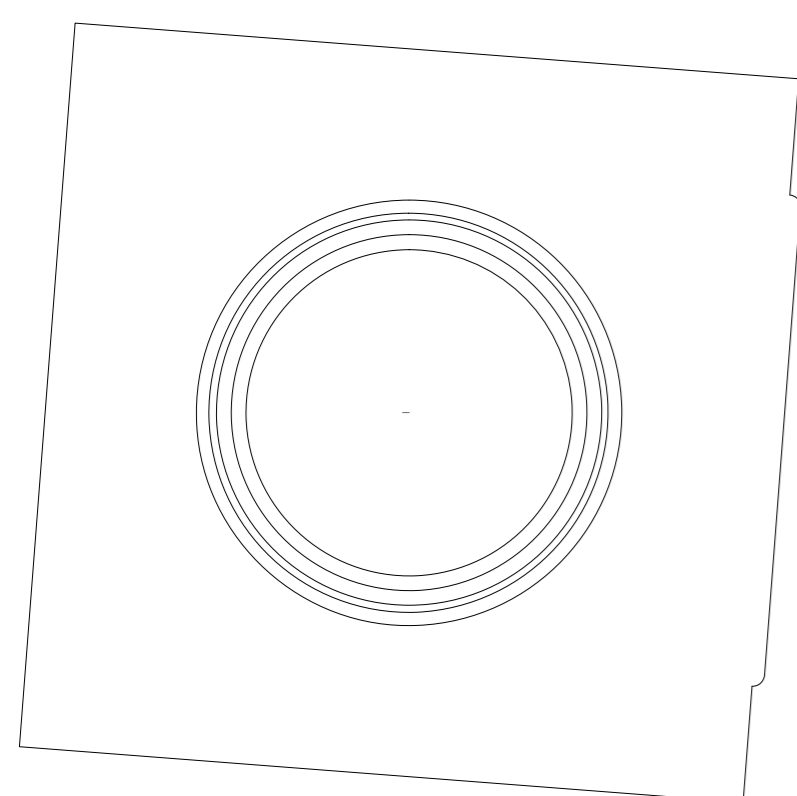
Second Floor New Library + 28.90

Scale 1:500



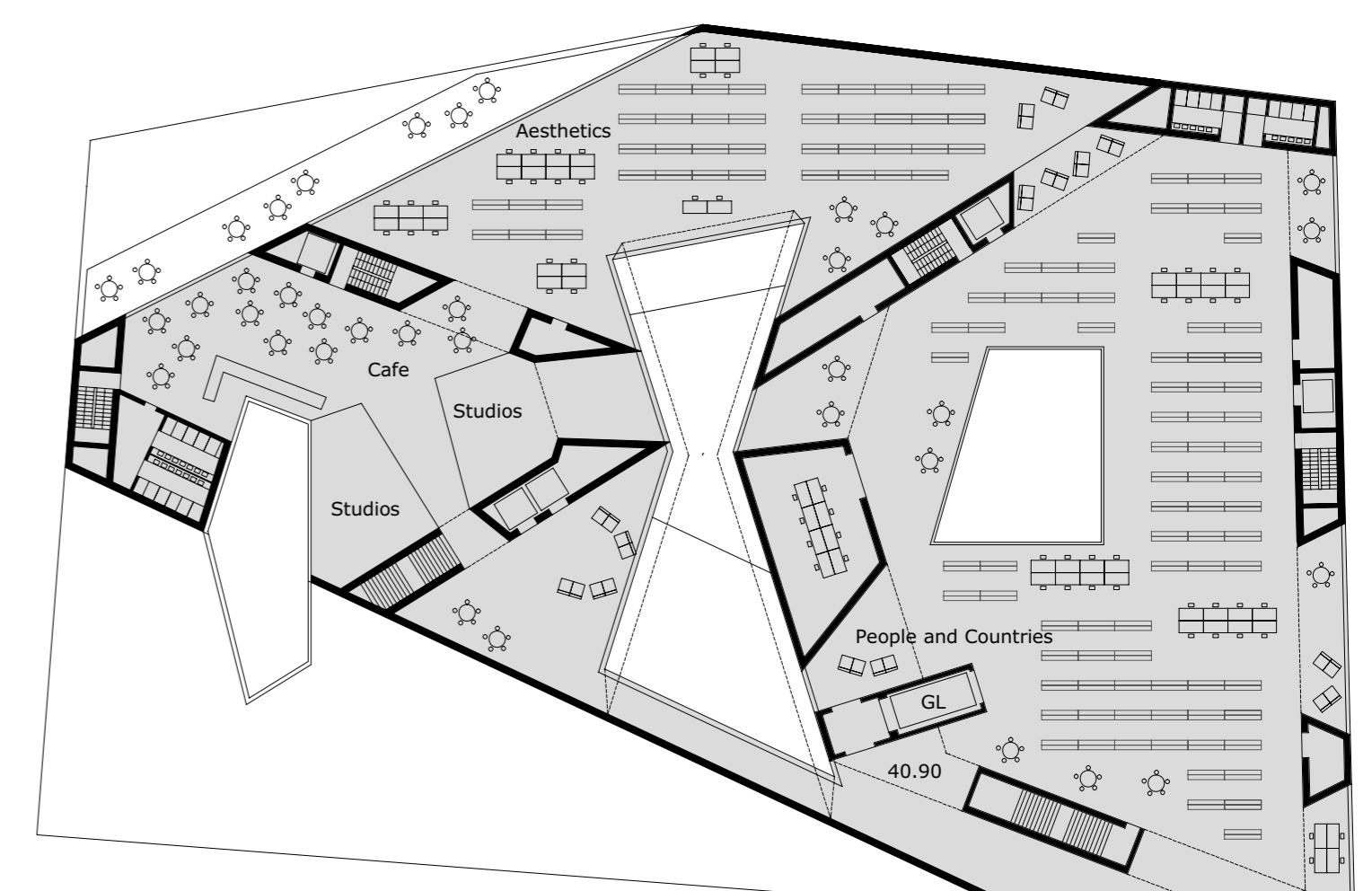
Fourth Floor New Library + 36.90

Scale 1:500



Third Floor New Library + 32.90

Scale 1:500



Fifth Floor New Library + 40.90

Scale 1:500