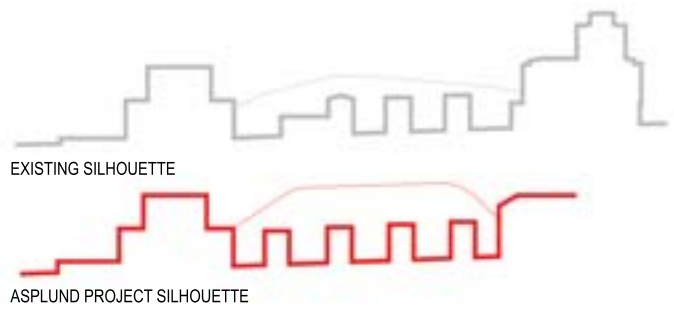
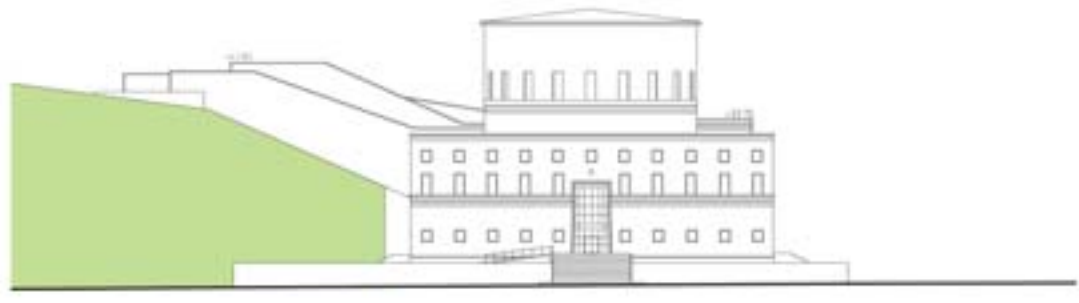




1. CITY LANDSCAPE = THE HILL + WINTERGARDEN + LIBRARY+ PUBLIC SQUARE + CAFÉ + ENTERTAINMENT
2. EASY ACCESS = CITY PUBLIC SPACE + LIBRARY FUNCTIONS
3. NEW PATHS TO THE HILL= PEDESTRIAN FLOW THROUGH BUILDING TO NATURE AND BACK.
4. RESPECT TO THE PAST = NEW FUNCTION IN HISTORICAL VOLUME AND MODERN SHAPE
5. MENTAL IMAGE = BOOKSHELF IN THE GARDEN
6. FLEXIBILITY =TRANSIT SPACES COMBINED WITH ANCHOR LIBRARY AND PUBLIC FUNCTIONS
7. OLD BUILDINGS – MEDIA COLLECTION="BOOKSHELVES", PUBLIC SPACE – MEDIA CONSUMPTION
8. THE PARK GETS INSIDE THE BUILDING AND ON ITS ROOF
9. THE HILL PUBLIC PARC GETS BETTER INDOOR AND OUTDOOR CONNECTION TO THE CITY

ELEVATION ALONG SVEAVAGEN



-The existing library building is a part of an urban plan made by Asplund which was not completely put into reality. We recreate the original project silhouette of the site along Odengatan by keeping the fronts of the existing buildings and inserting the fourth element.

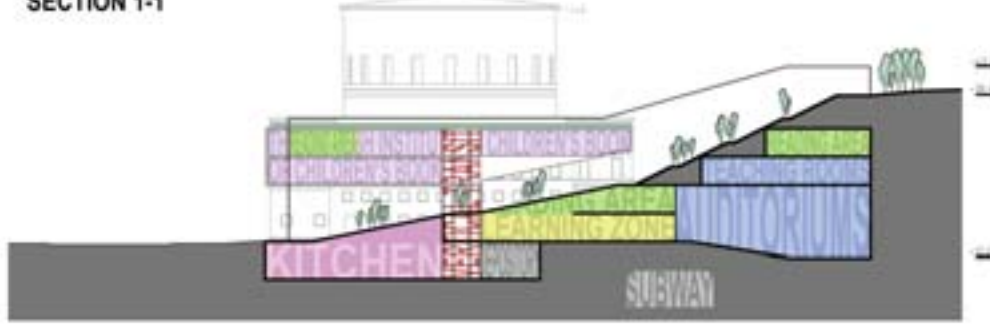
ELEVATION ALONG ODENGATAN



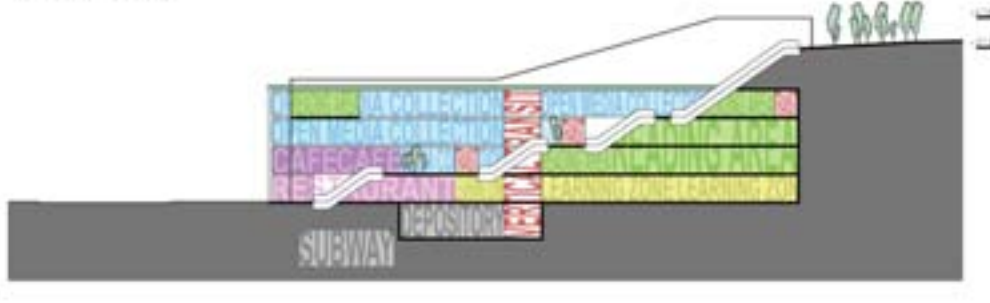
SITE PLAN SCALE 1:1000



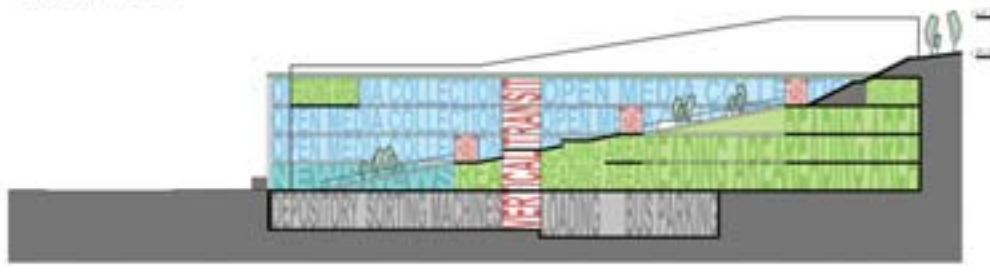
SECTION 1-1



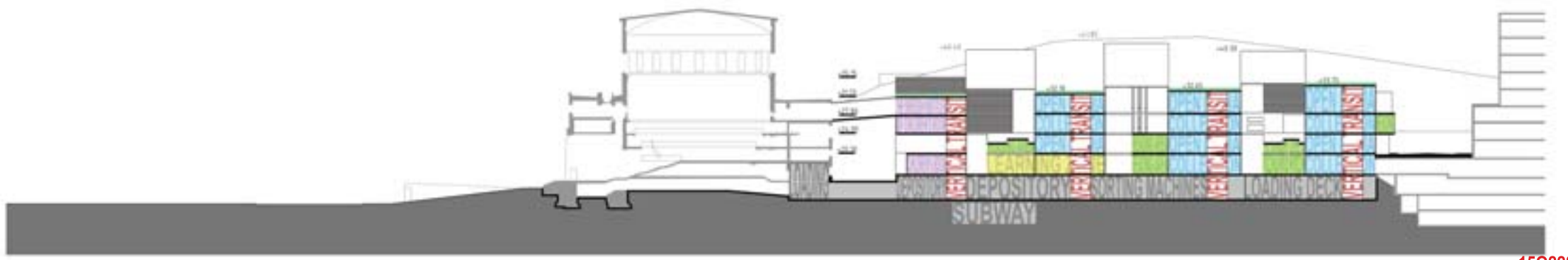
SECTION 2-2



SECTION 3-3



SECTION 4-4



LEVEL +27.80

FIKTION

THE ARTS



LEVEL +24.05

CIVIC STUDIES

FOREIGN LANGUAGES



LEVEL +20.30

NATURE AND TECHNOLOGY

CHILDREN'S FICTION

AESTHETICS

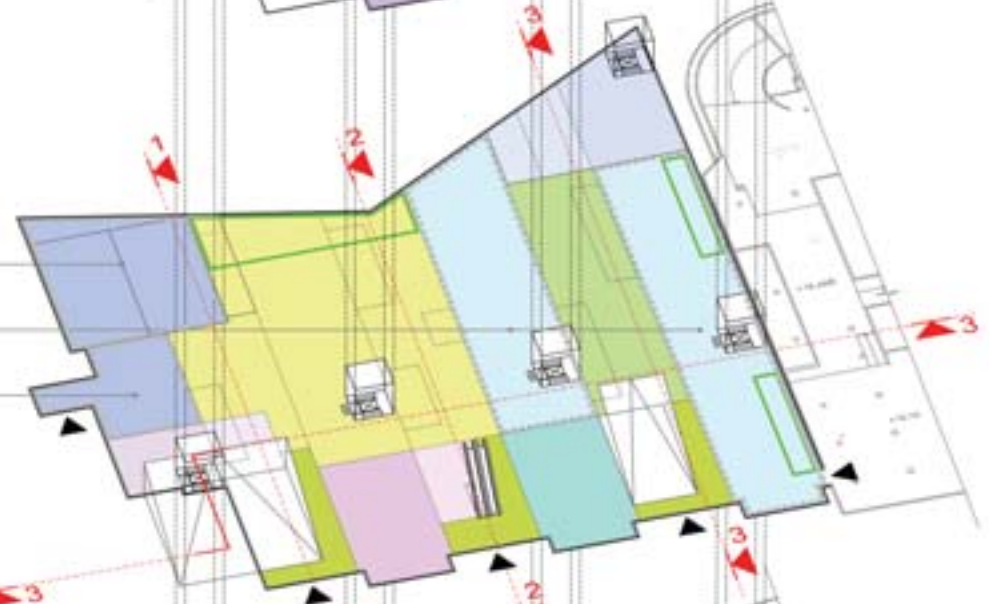


GROUND LEVEL

AUDITORIUM

PEOPLE AND COUNTRIES

STUDIOS



UNDERGROUND LEVEL

LOADING BUS PARKING

DEPOSITORY SORTING MACHINES

KITCHEN



- OPEN MEDIA COLLECTION
- READING AREA
- INSTITUTE OF CHILDREN'S BOOKS
- ADMINISTRATION & STAFF
- LEARNING ZONE
- MAIN ENTRANCE
- NEWS ZONE
- CAFE
- RESTAURANT
- AUDITORIUM, STUDIOS
- TEACHING ROOMS
- VISIT-ORIENTED ACTIVITIES