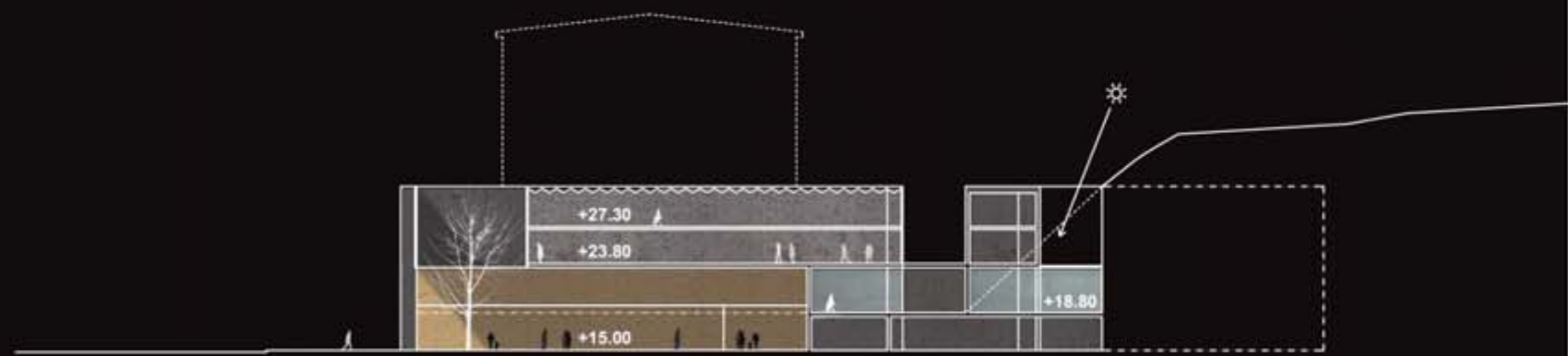
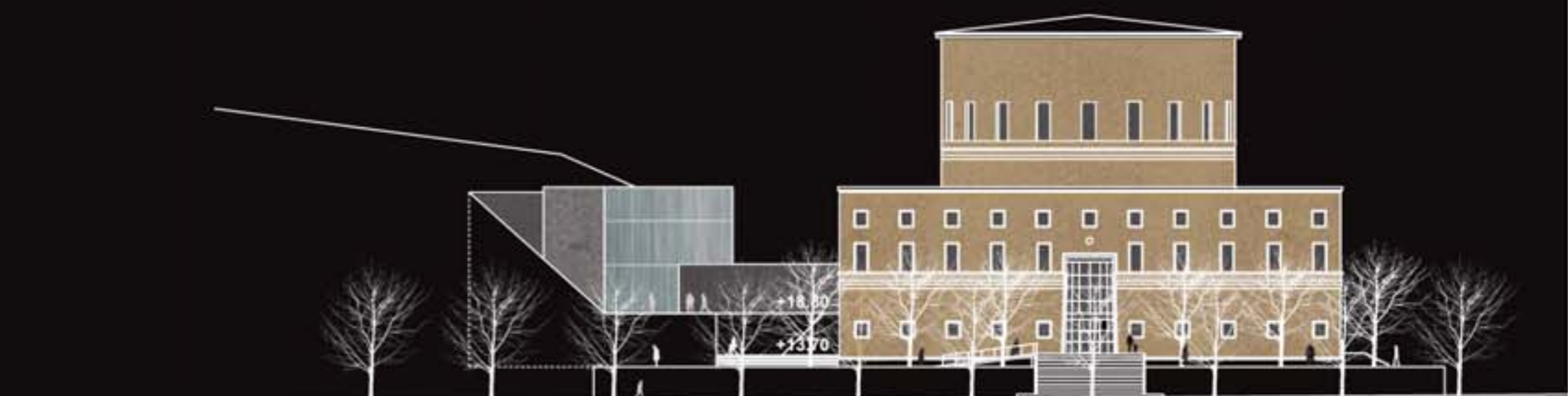


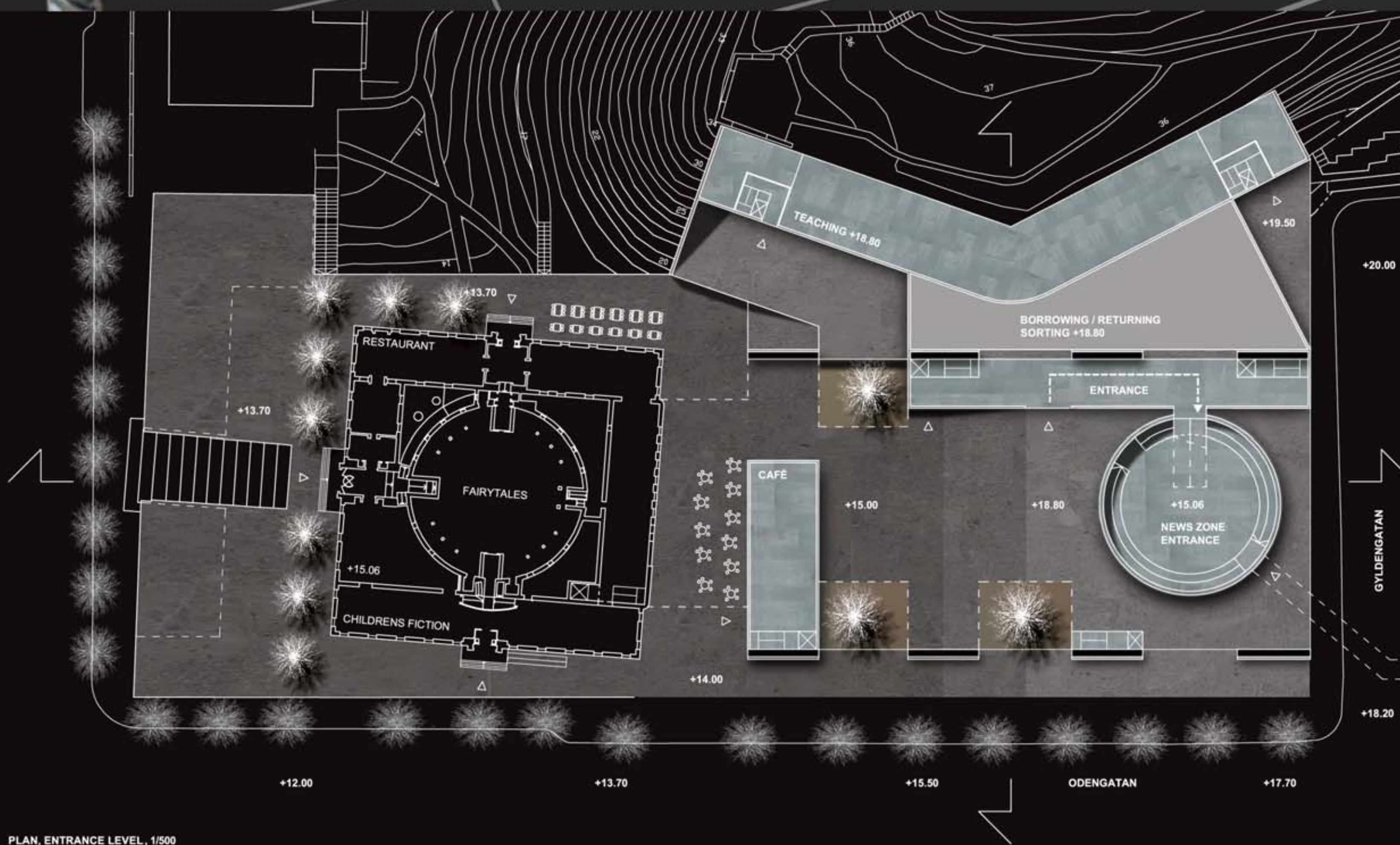
SITEPLAN, 1/1000



CROSS SECTION, 1/500



ELEVATION SVEAVÄGEN, 1/500



PLAN, ENTRANCE LEVEL, 1/500

The concept

The entry forms a new kind of urban oasis where the possibilities that the modern information technology offers are available besides the peaceful reading-pleasure of the traditional library. It organizes the existing situation in a new but simple way and opens unforeseen possibilities for the site. The extrovert functions of the library are directed to enliven the citizens every day life.

The architectural idea

The physical figure follows Asplund's original volumetric composition but it entangles the outdoor and indoor spaces together in a richer way. Thus it allows new pedestrian routes through the block to tempt the by-passers to a haphazard drop in.

The functions

The customer traffic is concentrated and it can be easily supervised also with a small personnel. The connection route to the subway station has a significant role in the whole. The centrally located and 24 h-open newspaper reading-area can be reached directly both from the station and from the street level. The whole library complex can be easily divided into parts which opening times differ.

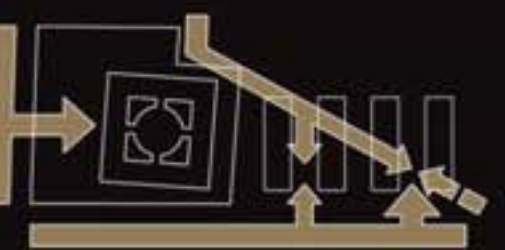
The service and goods traffic is situated on a zone of its own. The simple and rectilinear horizontal traffic on the unloading level is linked directly from the vehicles to the vertical connections serving the upper floors.

Figures	MUA	22 500 m ²
	Gross area	29 200 m ²

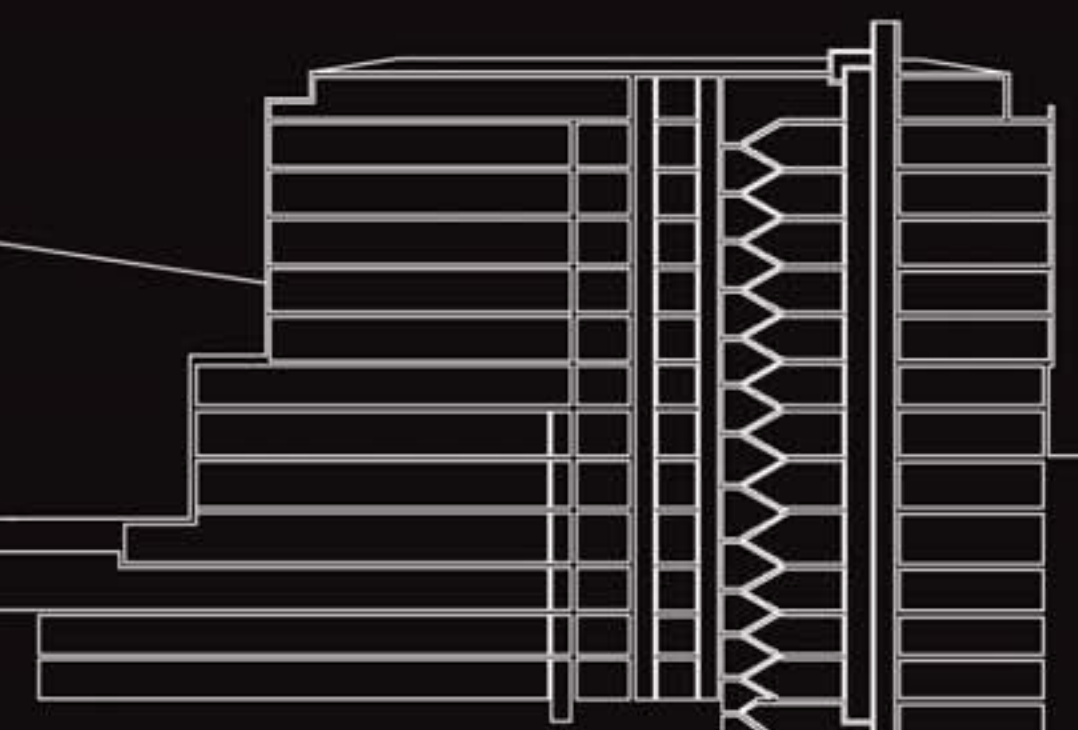
flow / books



flow / public



LONGITUDINAL SECTION, 1/500



ELEVATION ODENGATAN, 1/500