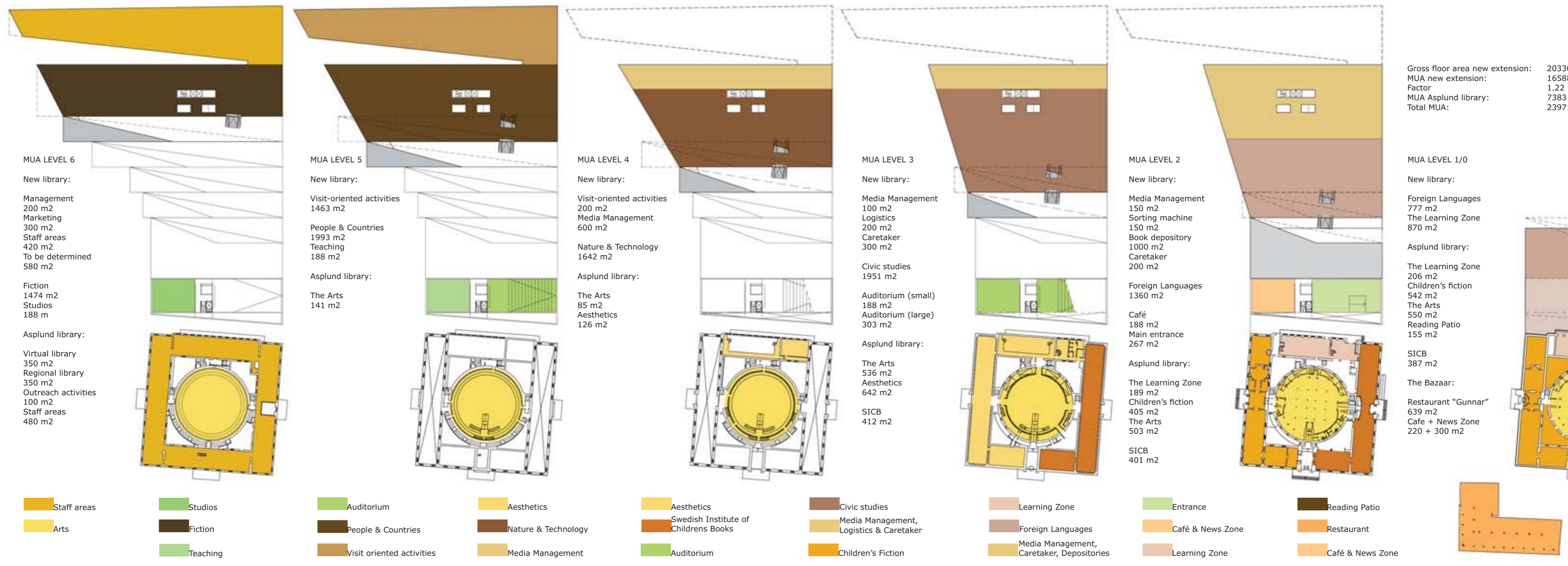




PERSPECTIVE VIEW FROM ODENPLAN



Gross floor area new extension: 20330 m²
 MUA new extension: 16588 m²
 Factor: 1.22
 MUA Asplund library: 7383 m²
 Total MUA: 23971 m²

IMAGE AND IDENTITY
 Libraries have been undergoing a revival during the past 10 years. They have evolved into mixed-media centers operating in education, leisure, information technology, archiving, contemporary urban culture and society. With this new role libraries have to develop new images to attract the wide target group. Architecture is a powerful and obvious branding tool. Urban design is a more difficult tool to harness for this use.

THE URBAN CONTEXT
 The location is easily recognizable within the urban fabric. While the city centre is largely characterized by closed city blocks, the Odengatan side of Observatoriekullen is set up as an open structure to maintain a visual relation between the hilltop and street level. The proposal upgrades this visual relation into a fully functional one. The presence of the park landscape is determinative for the character of the new development.

LANDSCAPE AND NATURAL VALUES
 The existing qualities of Observatoriekullen form the basis for the new landscaping. The north face is integrated into a mix of original parkscape, terraced semi-public gardens and squares and a new public urban space at street level.

THE ARCHITECTURAL CONCEPT
 The general height of the plinth of the Asplund library is picked up by the new main entrance building and carried on to the terraced main library volume. This base height is also to be picked up in the Folksam property renovation to form a balanced architectural development framework on an urban scale. The Asplund library rotunda and the Diligentia tower complement this well-balanced base as bipolar accentuating volumes.

HYBRID LANDSCAPE
 The main volume of the new library is sculpted as a hybrid landscape. The series of five deep, terraced floor slabs are aligned with Odengatan and embedded into the northwestern slope of Observatoriekullen. The resulting volume is understated and clean-cut on the street side and remains complementary to the dominant Asplund library. The sloping new library volume is accentuated by five deep diagonal cuts revealing outdoor terrace gardens. The resulting vertical surfaces are clad in curtain-glazing forming faceted openings with the glazed openings in the sloping main volume. The terrace gardens blend in with the north slope of Observatoriekullen and integrate the new library with the location.

CRITICAL CONSERVATION
 The Asplund library is retained with limited and focused alterations. The quadrants between the rotunda and the four wings are cleaned up all the way down to the lower rotunda floor level and covered by a glass roof. This brings indirect sunlight deep into the building and improves the usability of the basement levels while strengthening the conceptual clarity of the Asplund library. No alterations are made to the exterior elevations with the exception of the west wing. In order to create an underground spatial and functional link with the rest of the new library, the lower basement level is opened up.

EMBEDDED EXPERIENCES
 Inside the new library, wide staircases leading to and from the square level of the entrance building create a spatial continuity between the public functions above ground level and the subterranean library base level. The visitor progresses through the new main library along a wide circulation zone connecting all the floors. This main interface of all departments housed in the new main library enjoys panoramic views of the north slope of Observatoriekullen through glazed roof sections, deep voids and unhampered glazed facades. The cut-out terraces adjacent to the lush hillside offer optional additional entrance possibilities on every floor level and extend the usable floor area in good weather when used as a reading landscape.

The competition site, however, has the luxury of enjoying all of the necessary qualities. An urban location next to a public transport hub, a historical park of impressive topography, architectural heritage complemented by high contemporary ambitions, all resulting in a dynamic and diverse setting. The recreational aspect is largely exploited in the new library proposal. By creating a multifunctional public urban space as an interface in the heart of the location, the proposal presents the modern library as transparent and accessible.

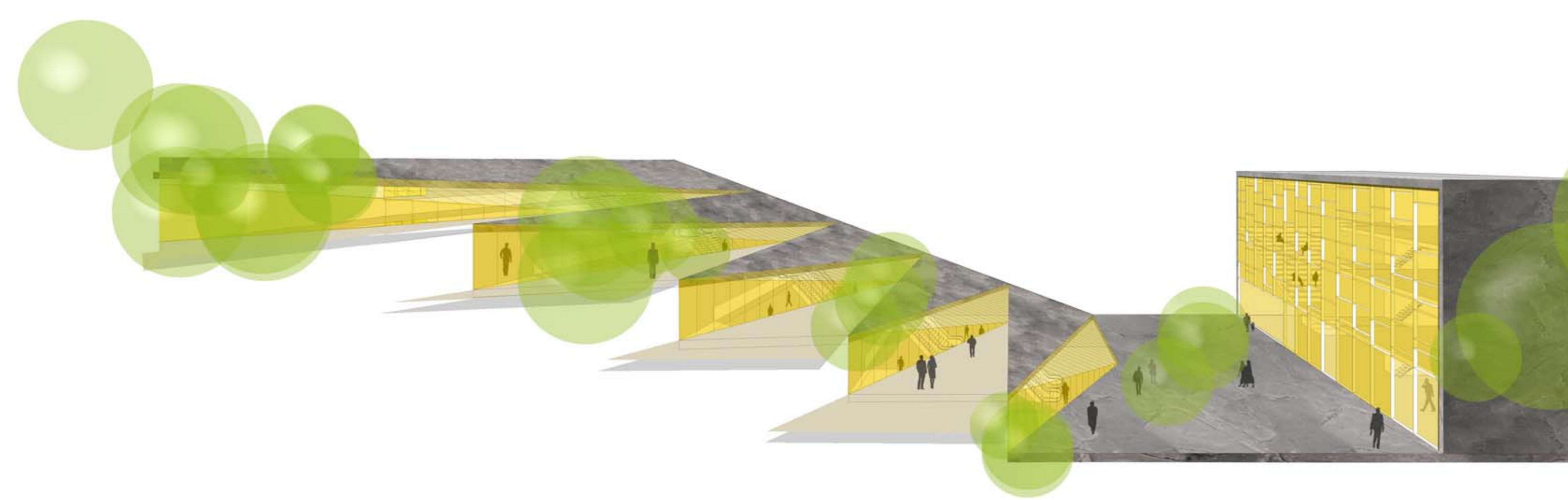
A new public space is created partially overlapping the current Spelbomsplan square to facilitate the strong presence of the new city library and the additional public functions. This new urban space takes on a specific role on the city on a local and regional level. The location serves as a cultural, recreational and educational urban meeting point for all age groups. The contemporary image of the new library is communicated on street level by the dynamic massing concept, the respectful treatment of the iconic Asplund library and the varied use of diverse open spaces.

The park landscape of Observatoriekullen itself is landscaped to create a subtle transition to the reading terraces. The existing utilities buildings for the subway system located between the Asplund library and the hill are to be upgraded and integrated into the landscape.

The east side of the hill facing Sveavägen is cleaned up and upgraded. The existing path and steps are to be renovated and a new public terrace is to be created below the slope at the foot of the steps. The use of the existing and new recreational public spaces and the foot of Observatoriekullen around the pond can be increased by allowing small-scale kiosk pavilions to be built between the pond and the slope.

The new entrance building is positioned in front of the west façade of the Asplund library. This new multifunctional public building is the eye catcher while remaining complementary to the iconic contour of the Asplund rotunda. The new volumes are robust and closed on the busy street side while the expressive and open fragmented curtain-glass exterior exhibits the functions inside onto Spelbomsplan square.

By positioning the new building separate of the west elevation the monument remains intact and a new architectural quality can be introduced to the choice location.

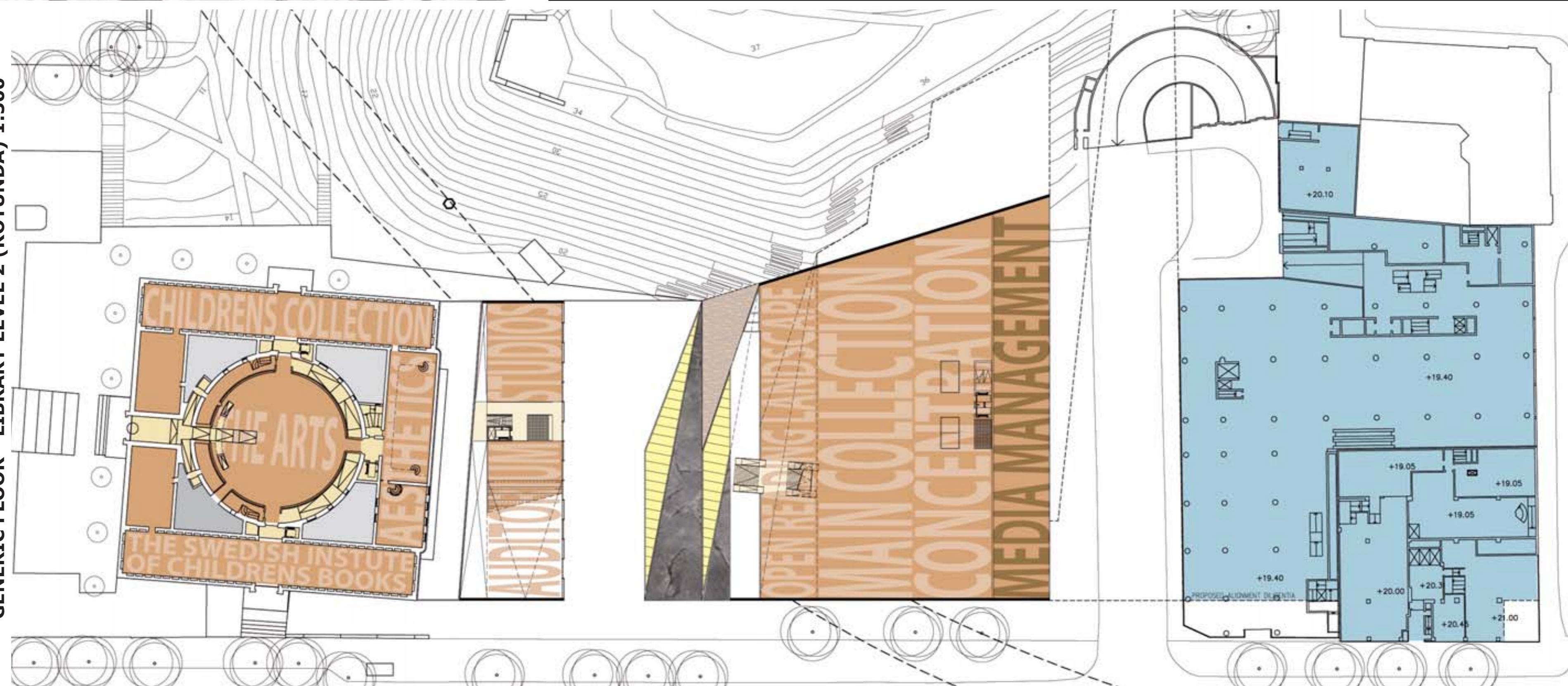




SITE PLAN 1:1000



GENERIC FLOOR - LIBRARY LEVEL 2 (ROTUNDA) 1:500



THE FUNCTIONAL CONCEPT

The Asplund library is retained as an integral part of the new main library. Most of the internal staff functions, the complete logistical services and media management functions are located in the new main library to offer maximum efficiency and functionality. Visitor areas are located over the complete new library.

The logistics - concierge, loading bay, and media management - are all located in the new main library on Gyldegatan. This street provides vehicular access for the loading bay while also retaining its current function in servicing the underground car park under the Folksam property. The large book depot and the sorting machine are located in the underground part of level 1. Directly above the depot on level 2, facing Gyldegatan, are the areas allocated for the concierge, the logistical centre and part of the media management, the remainder of which is located on level 3. The library departments located in the Asplund building are supported by an automated media delivery system fed directly by the central sorting machine.

ELEVATION SPELBOMSKAN, ELEVATION ODENGATAN AND SECTION A-A WITH CIRCULATION SCHEME 1:500

