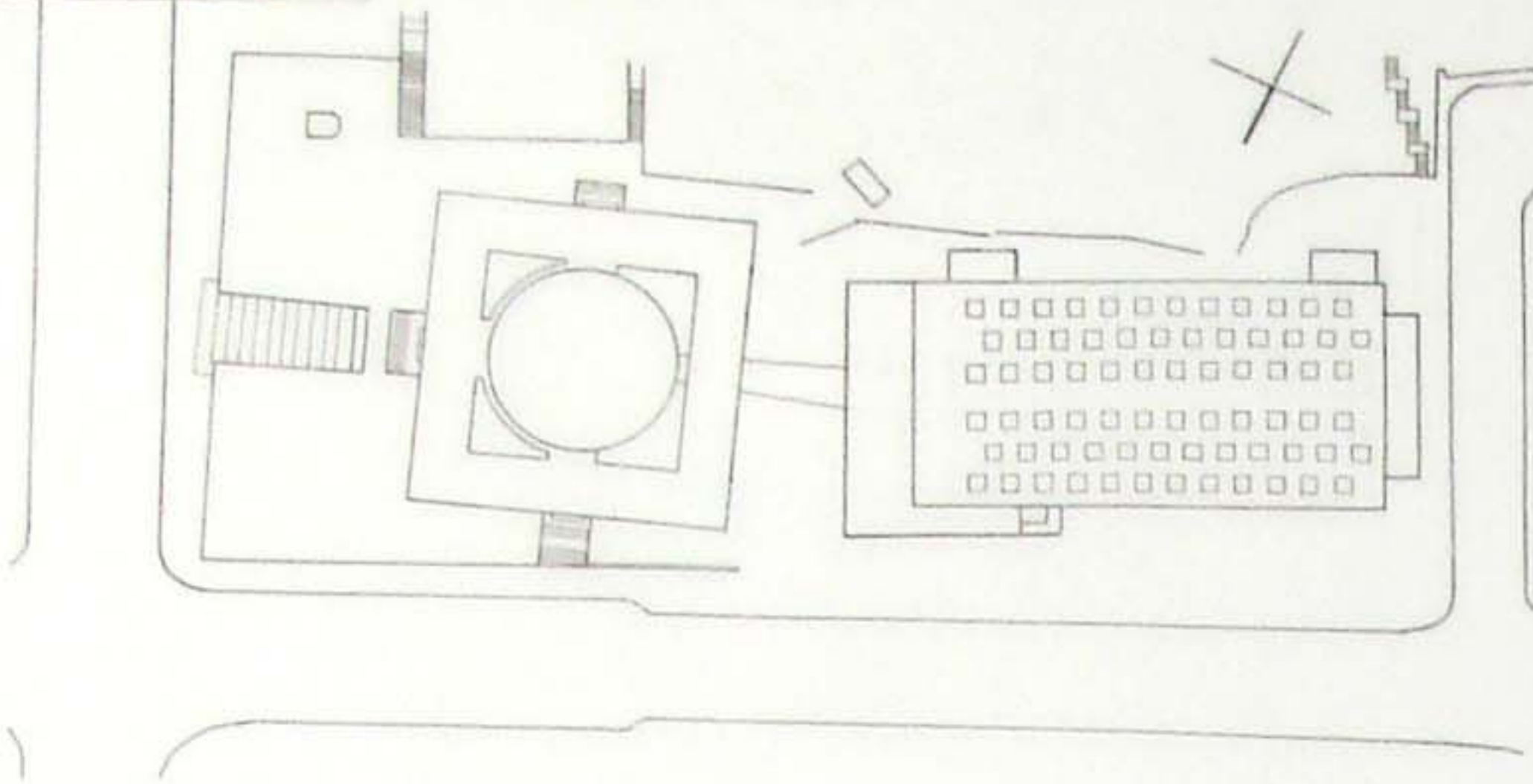


# THE PROJECT OF NEW

SITE PLAN 1:1000



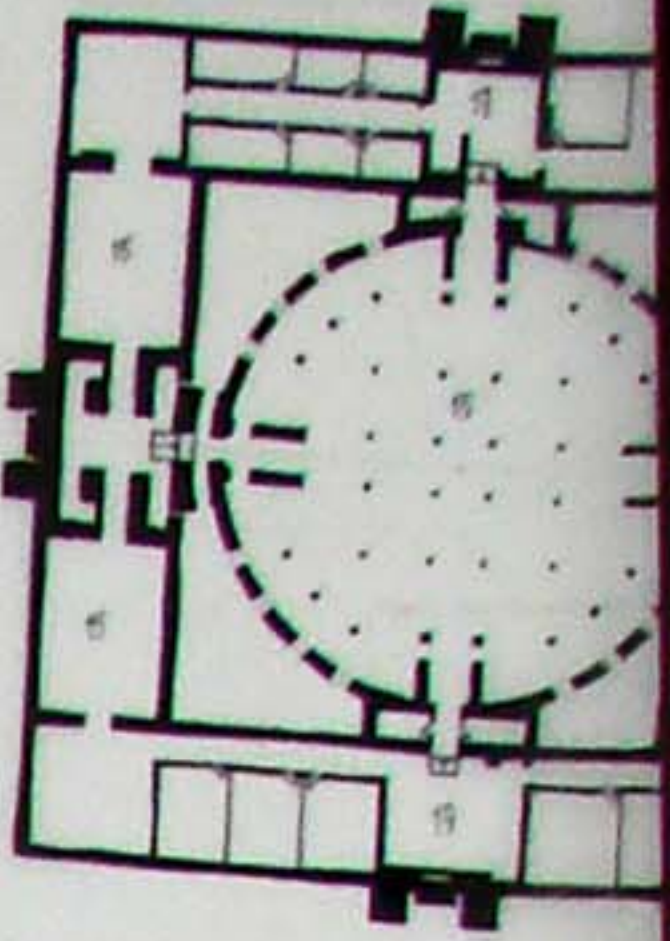
The conception of a new building of the library is the simple geometric volumes, clear, straight line, easy readable forms. There is nothing unnecessary. People and books are the main heroes here. The library consist of two main volumes. There are the zones for studying, administration down part. The entrances are there too. The receiving of information and popularization of literature are hold here. This volume has light construction and is open to the sun.

The direct contact between readers and books takes place in high part of the building. There are subject areas and reading rooms here. For protecting the books from the sunlight this part of the library is made as the closed volume and is open only to the hill. For creating the better conditions of the interior lighting the clerestory roof is used in project. Between the floors there are space with two ties of windows. The connection between these two volumes is organized with the help of stairs and lifts - on the vertical and with the help of escalators, situated on the central axis of the building.

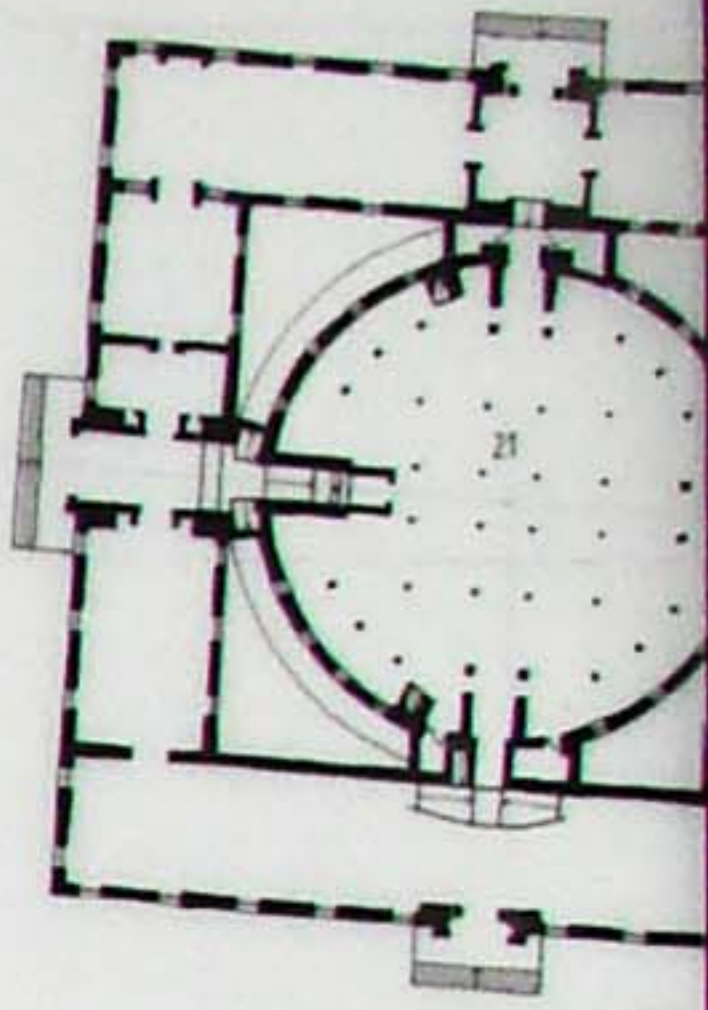
The new building of the library has two entrances. The main entrance is between the new and old building. In order to attract the attention of the people the corner of the new building is divided into several small volumes. They are used for the administration of the library. The plastic of this corner is very important. It seen from every-where. The second entrance is turned to the street Odengatan.

The connection between the new and old buildings is organized with the passage. There is a restaurant here. The depository and media management are situated under the ground. They have vertical bracing with these two buildings. The workers of the library are moving with the help of special staires, which are isolated from the visitors of the library.

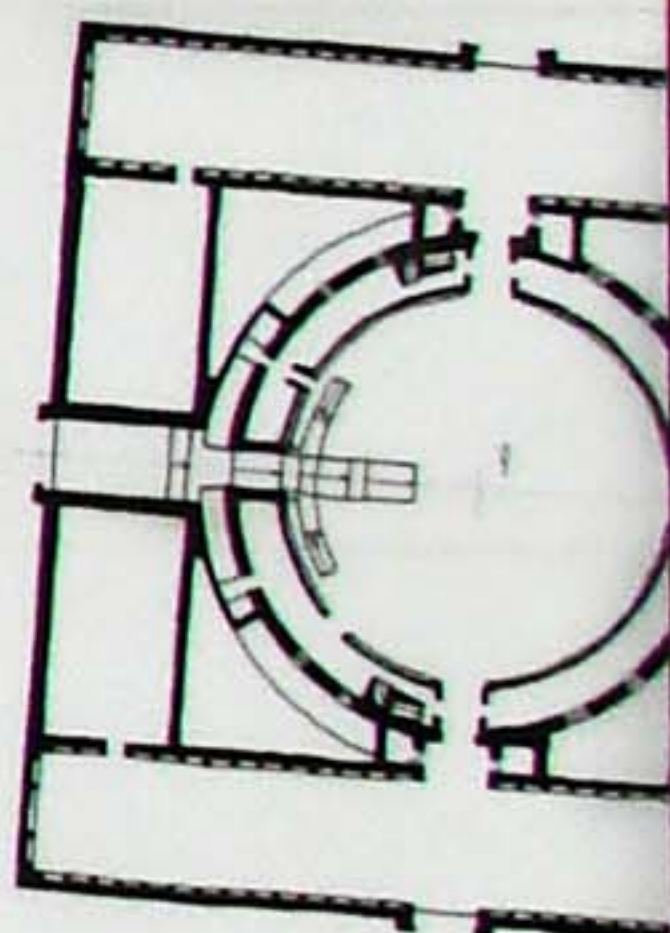
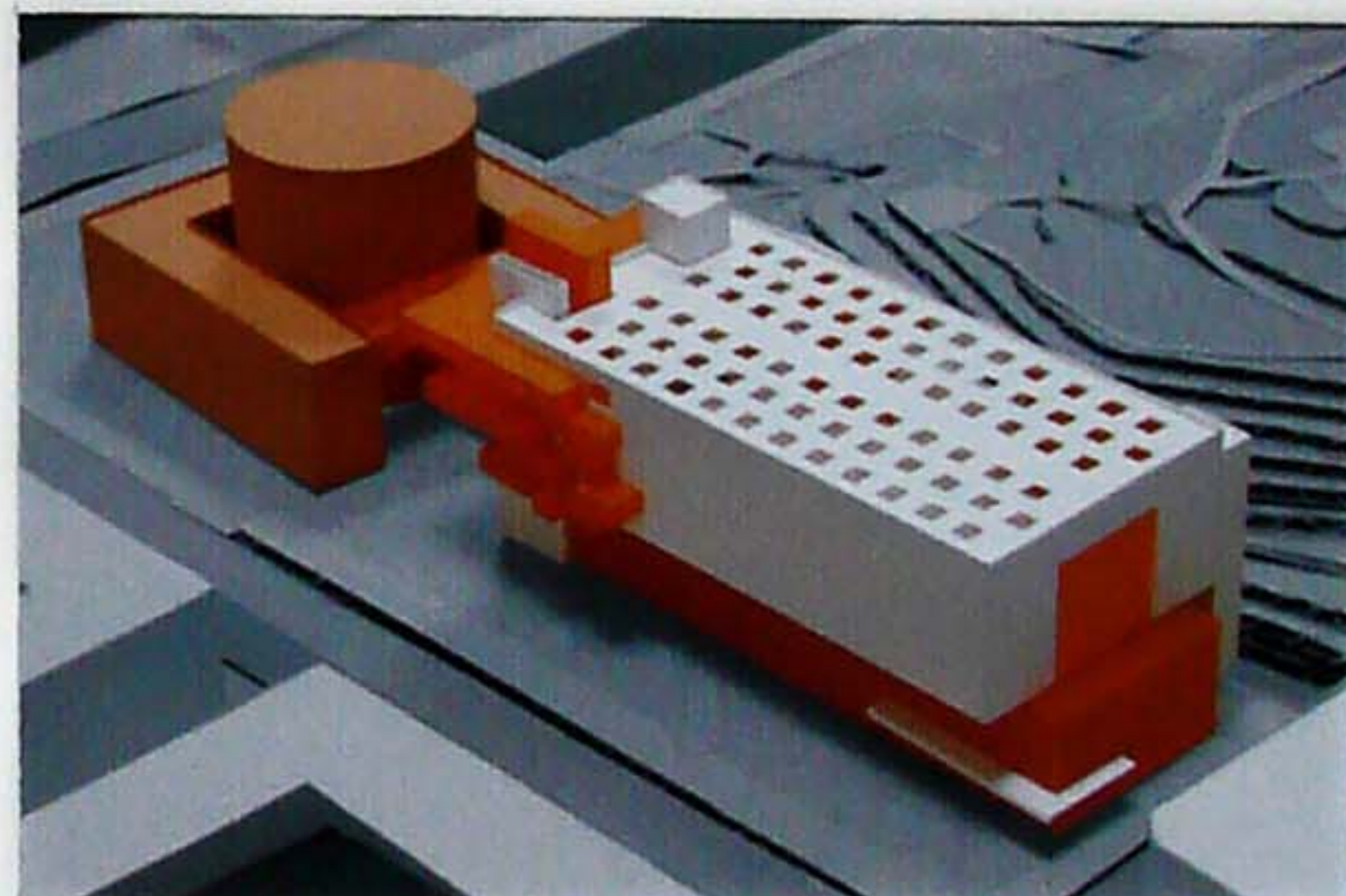
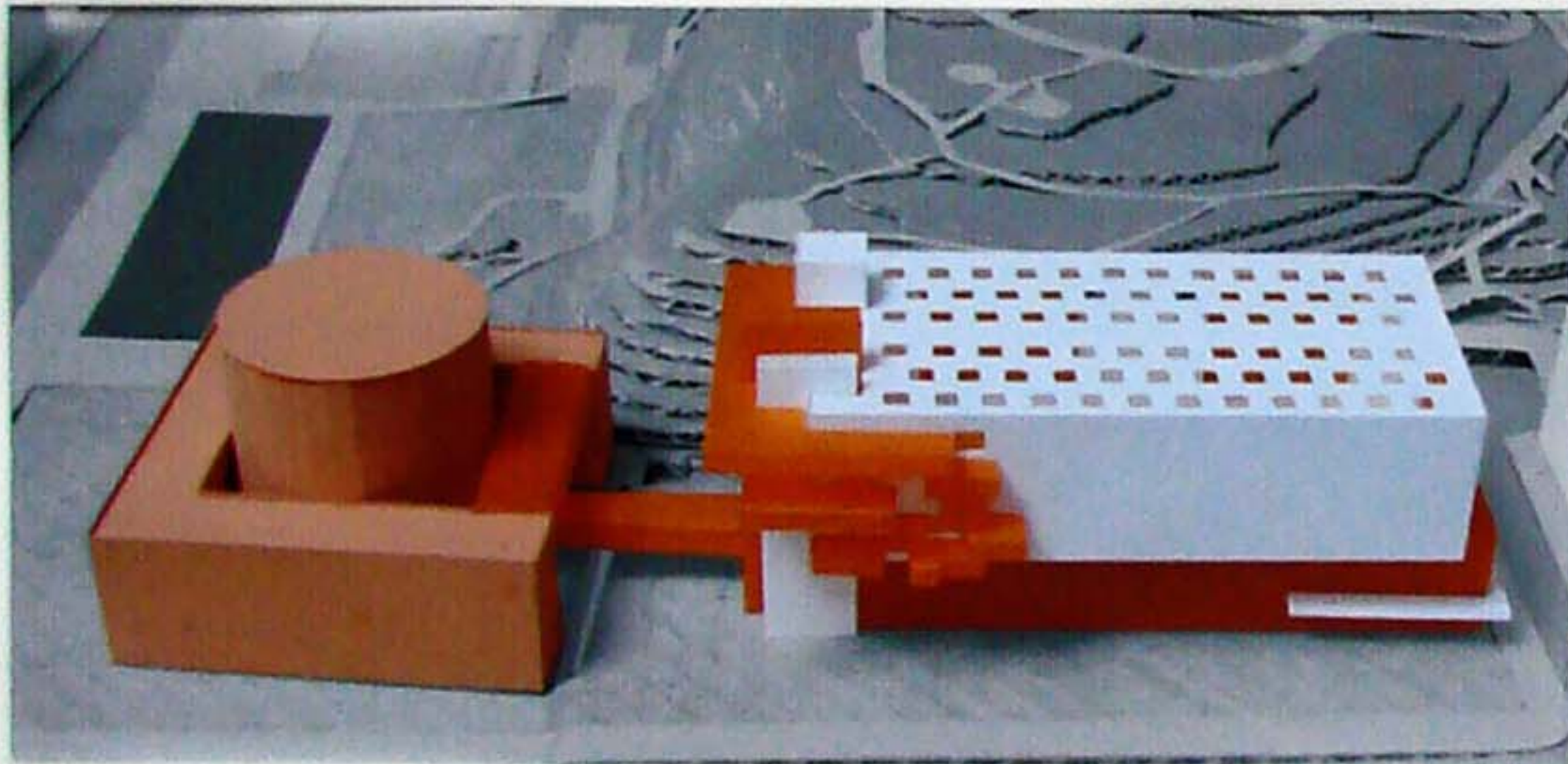
The high volume has no partition. It is made of facing stone in white colour. The low volume, the passage and the part for administration are constructed of the glass, which can be closed with jalousie.



PLAN 1 1:500

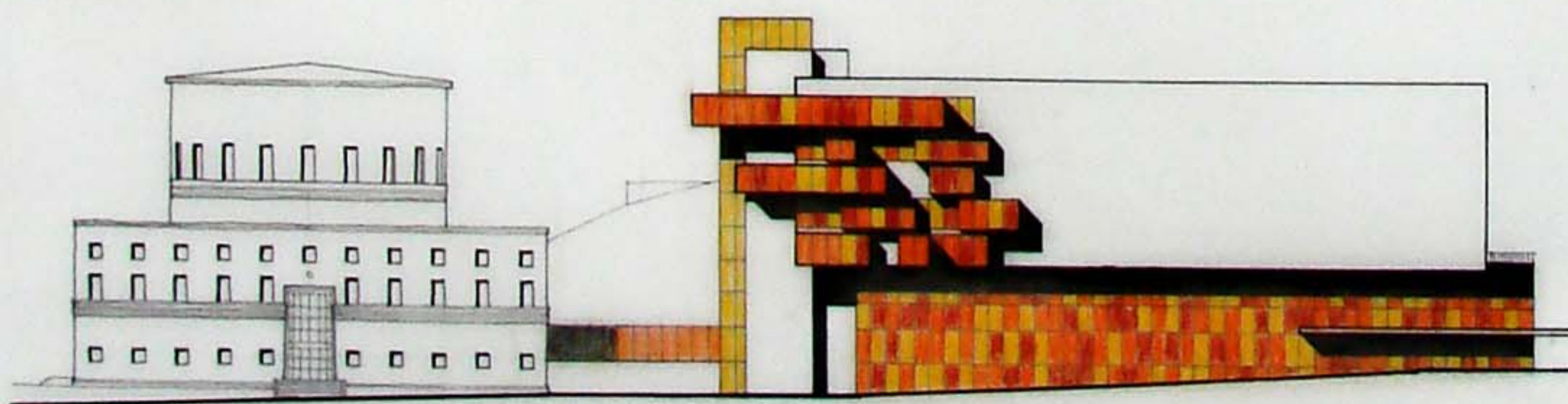


PLAN 2 1:500

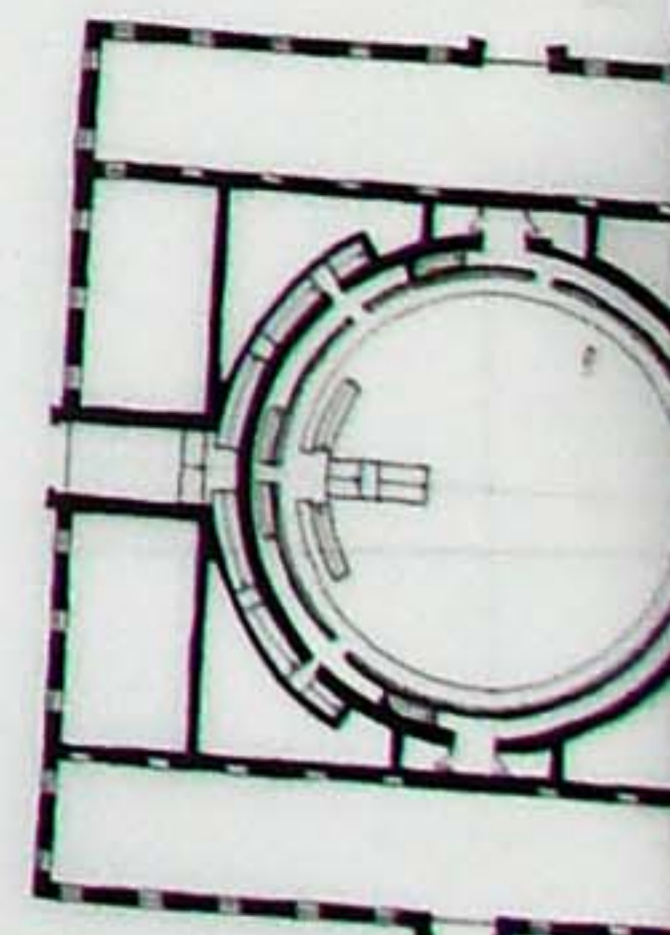
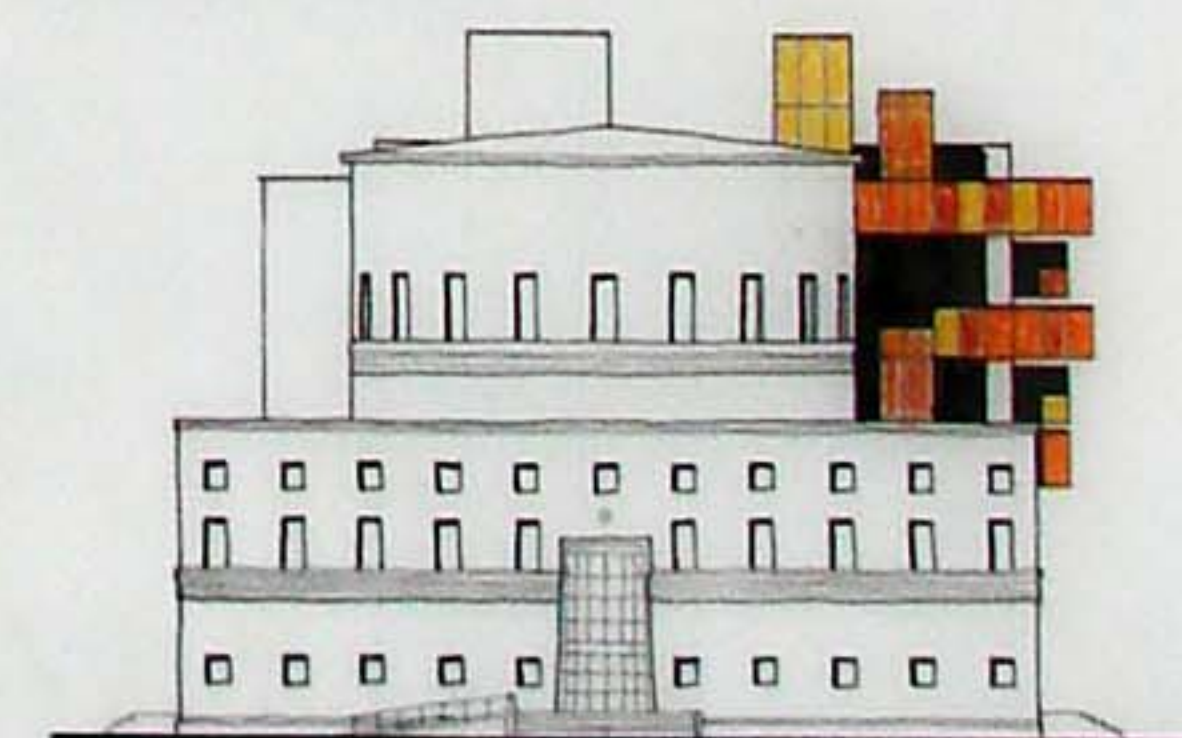


PLAN 3 1:500

ODENGATAN FACADE

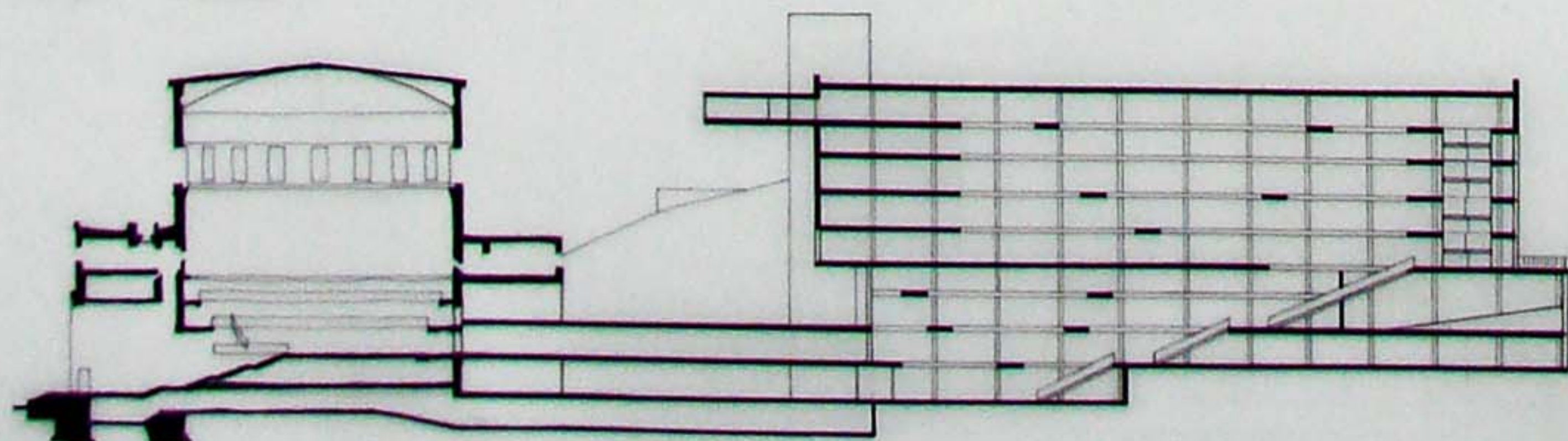


SVEAVAGEN FACADE

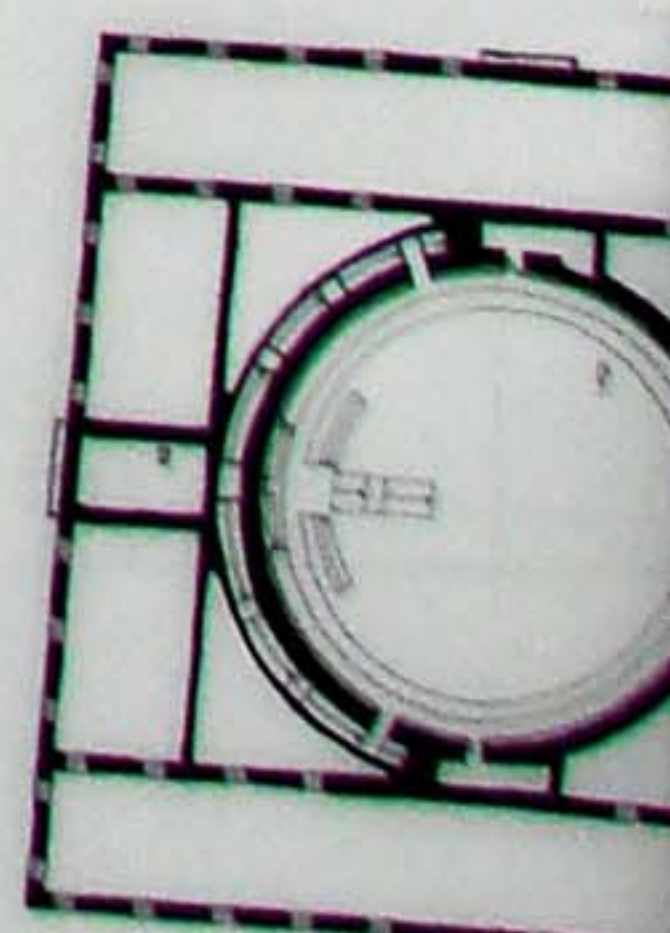
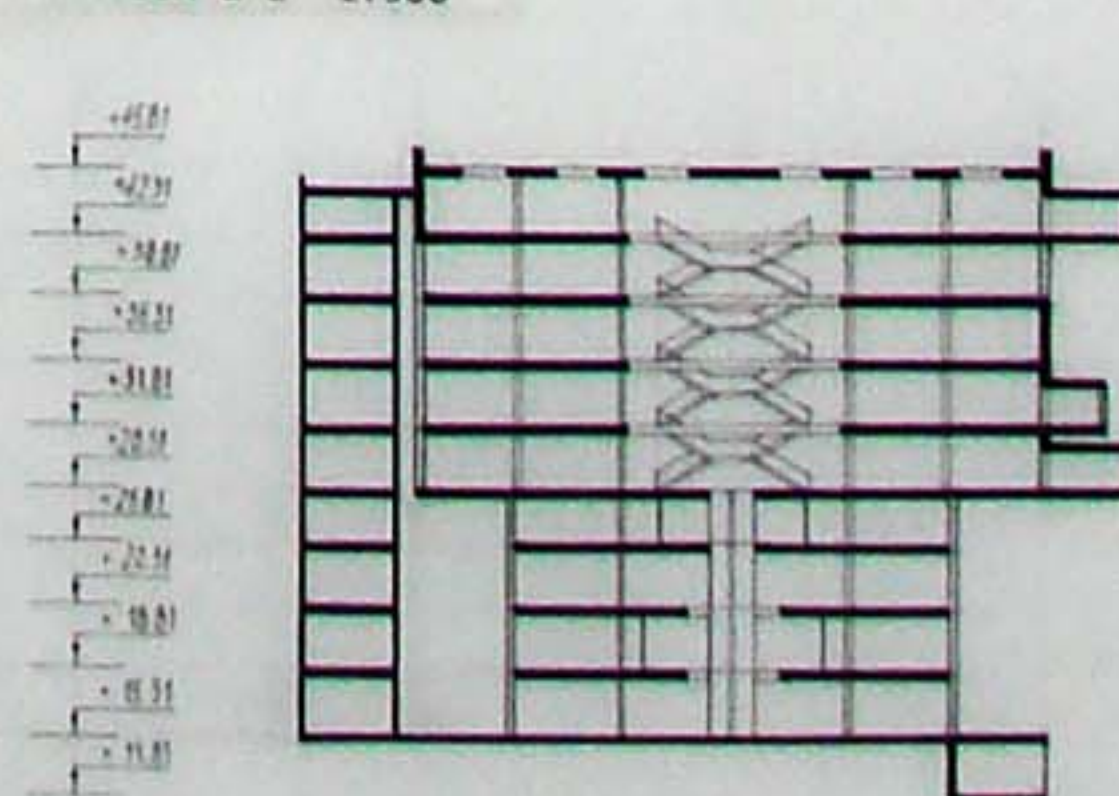


PLAN 4 1:500

SECTION 1-1 1:500



SECTION 2-2 1:500



PLAN 5 1:500

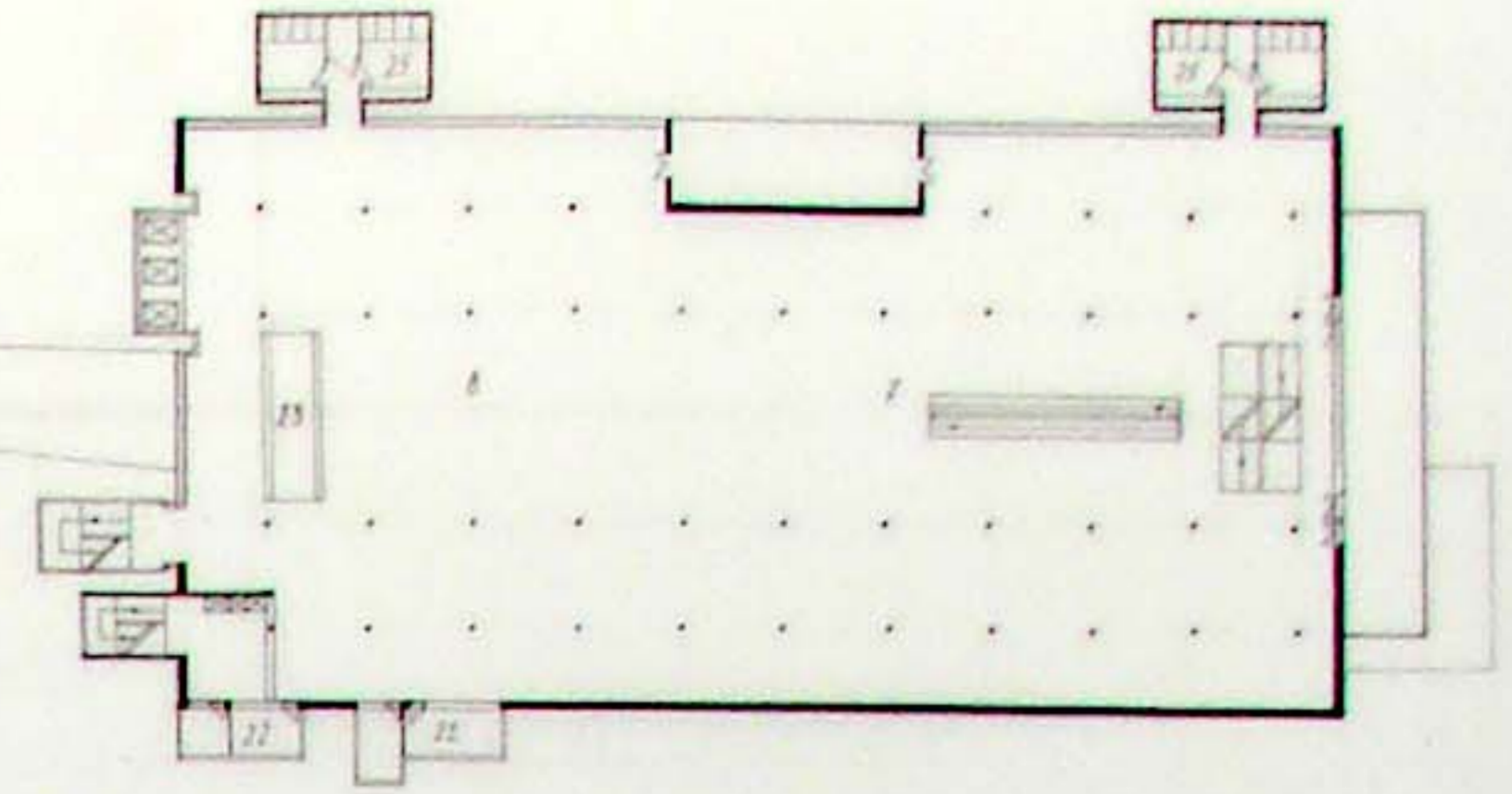
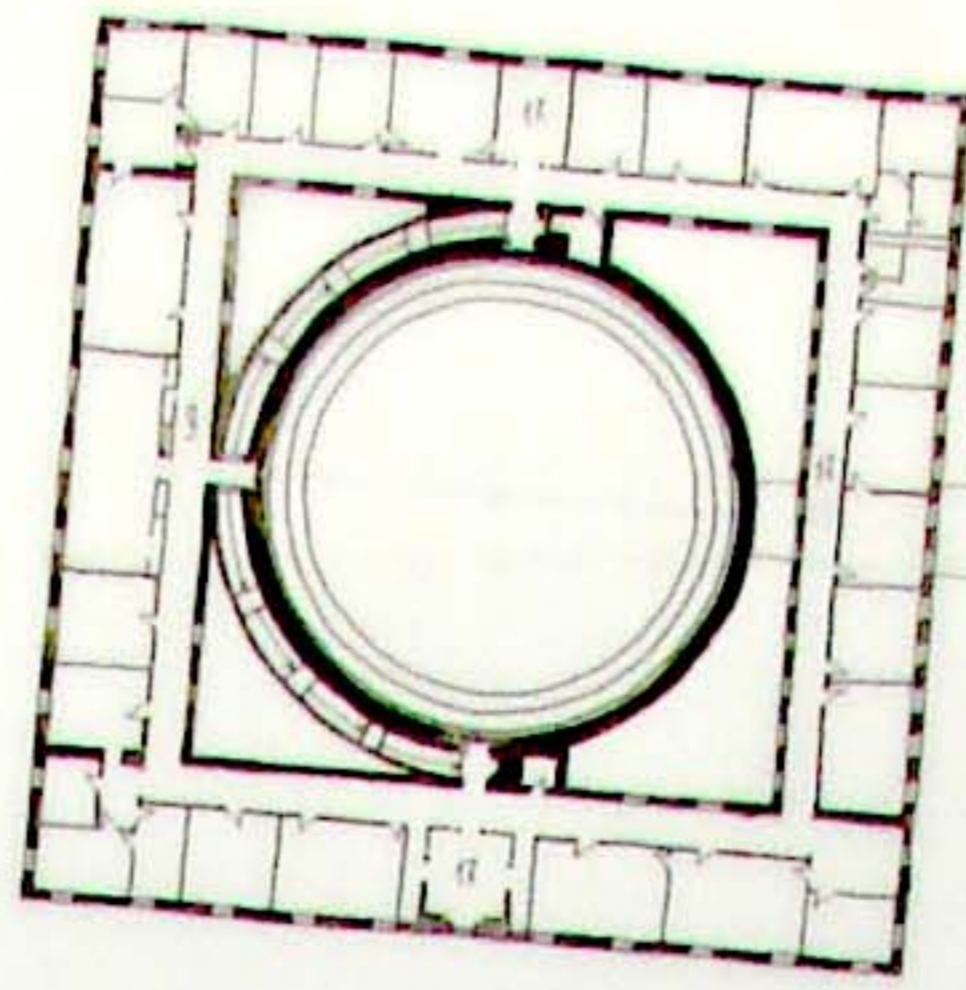
# STOKHOLM

# PUBLIC

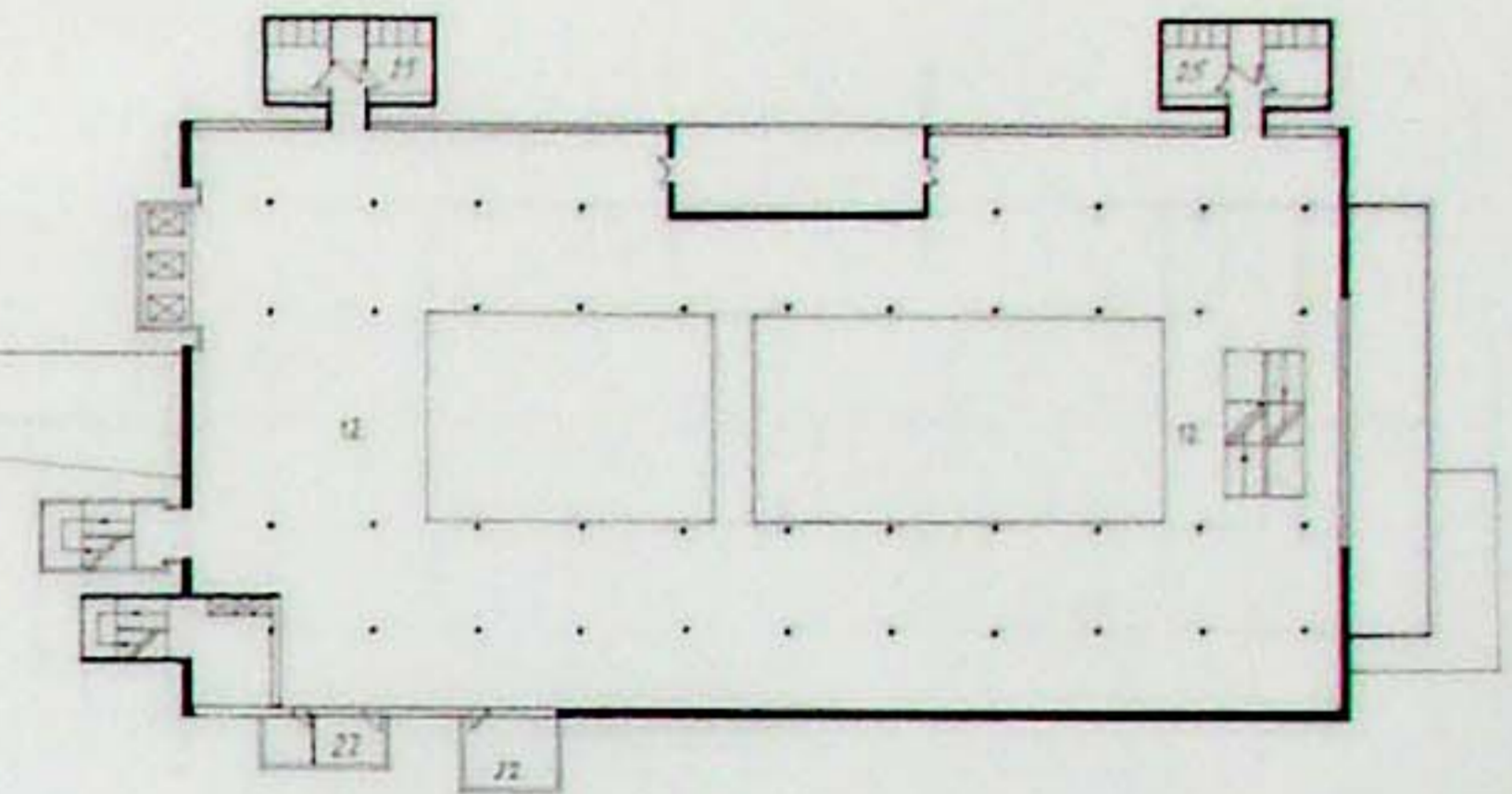
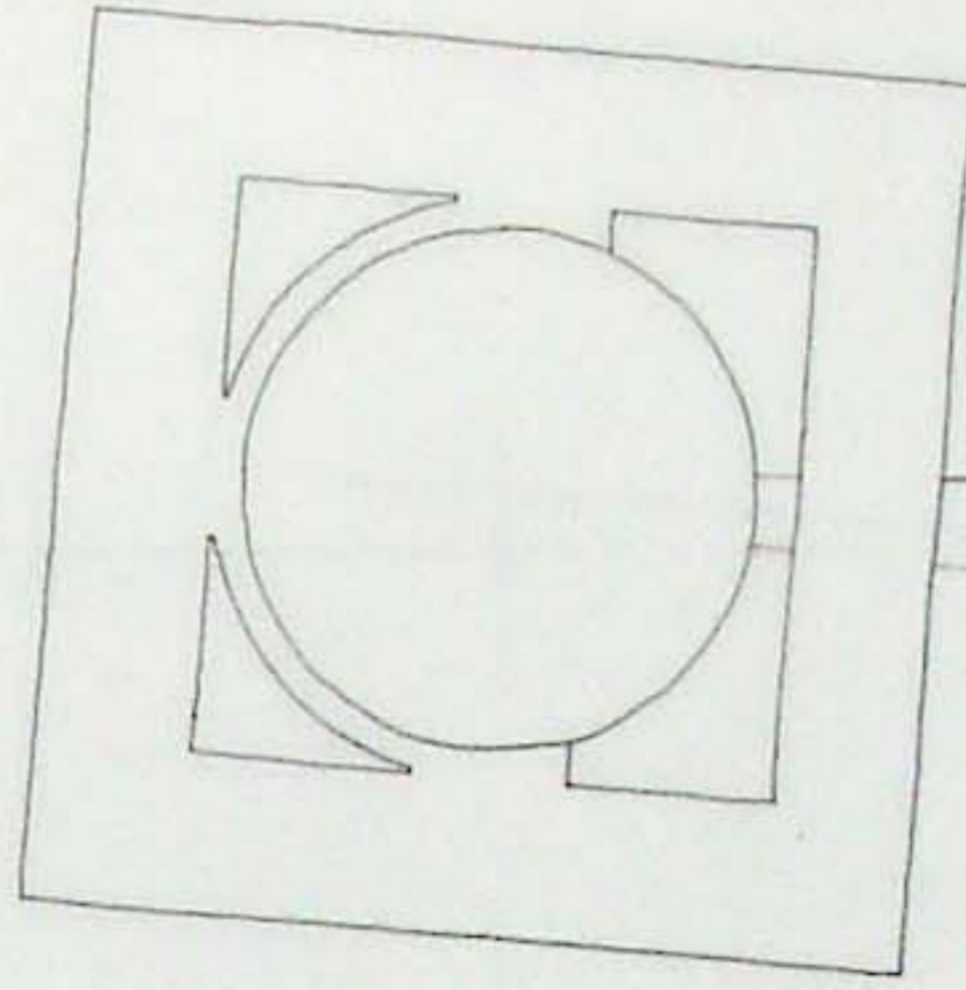
# LIBRARY

EXPLICATION:

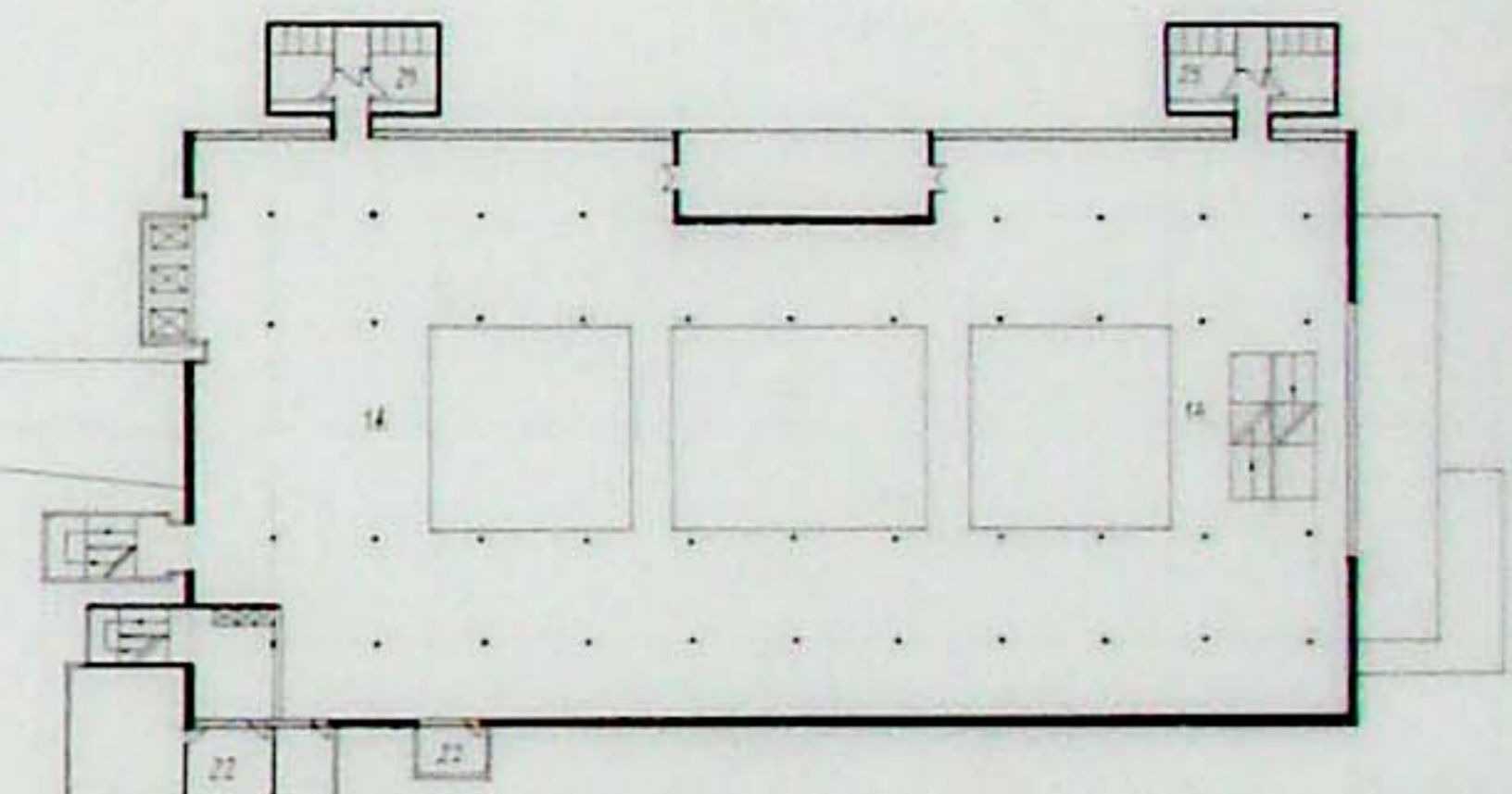
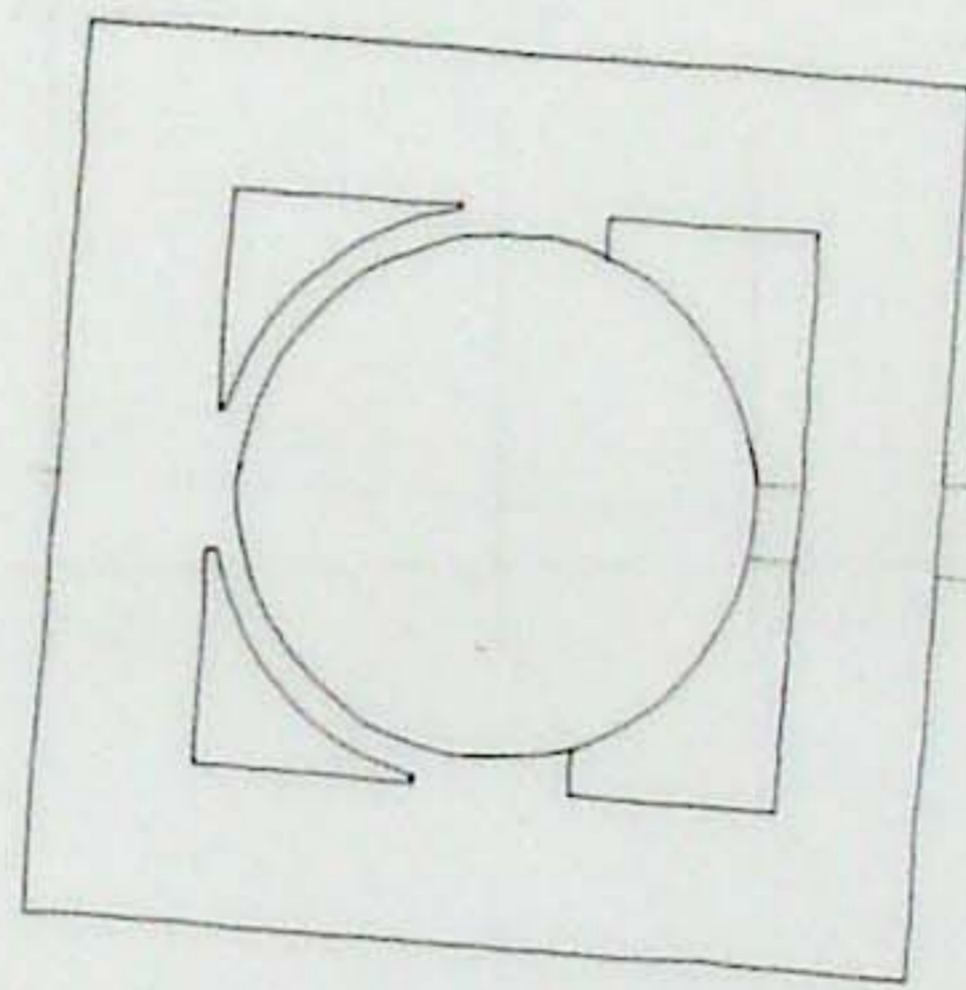
1. ENTRANCE
2. THE NEWS ZONE
3. THE LEARNING ZONE
4. STUDIOS
5. TEACHING
6. LECTURE HALL
7. FICTION
8. CHILDREN'S FICTION
9. FOREIGN LANGUAGES
10. THE ARTS
11. AESTHETICS
12. CIVIC STUDIES
13. NATURE AND TECHNOLOGY
14. PEOPLE AND COUNTRIES
15. DEPOSITORIES
16. SORTING MACHINES
17. MEDIA MANAGEMENT
18. LOGISTICS/LOADING PLATFORM
19. CARETAKER'S OFFICE AND PROPERTY SERVICES
20. ADMINISTRATION
21. THE SWEDISH INSTITUTE OF CHILDREN'S BOOKS
22. VISIT-ORIENTED ACTIVITIES/OFFICES
23. CAFE
24. RESTAURANT
25. TOILETS



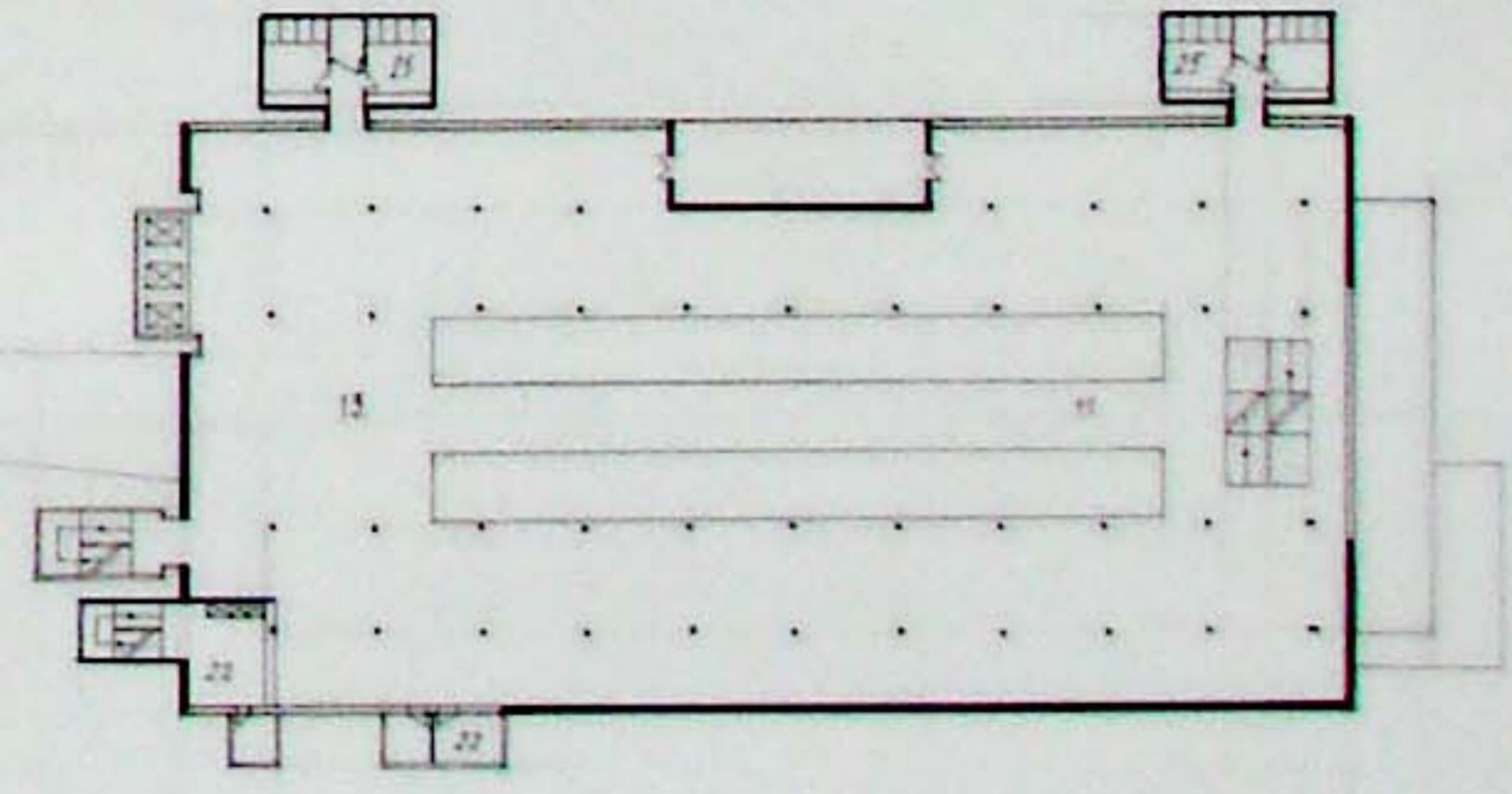
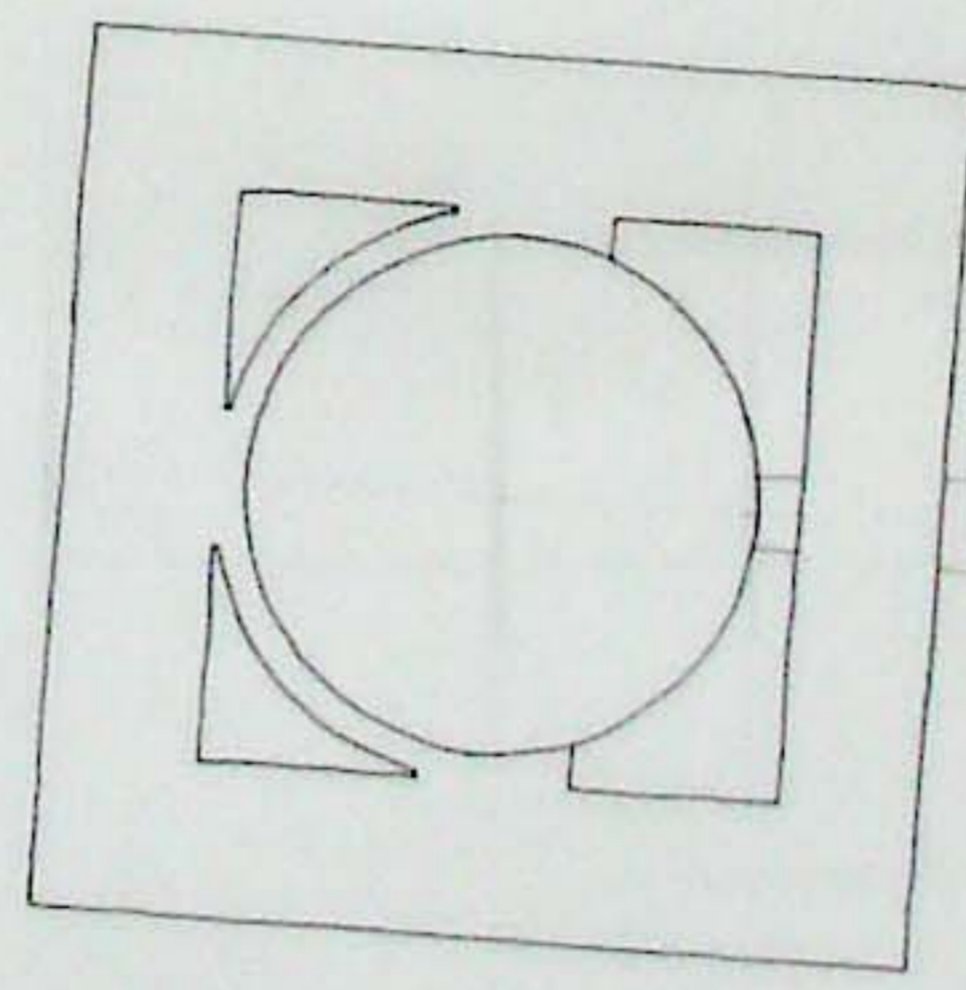
PLAN 6 1:500



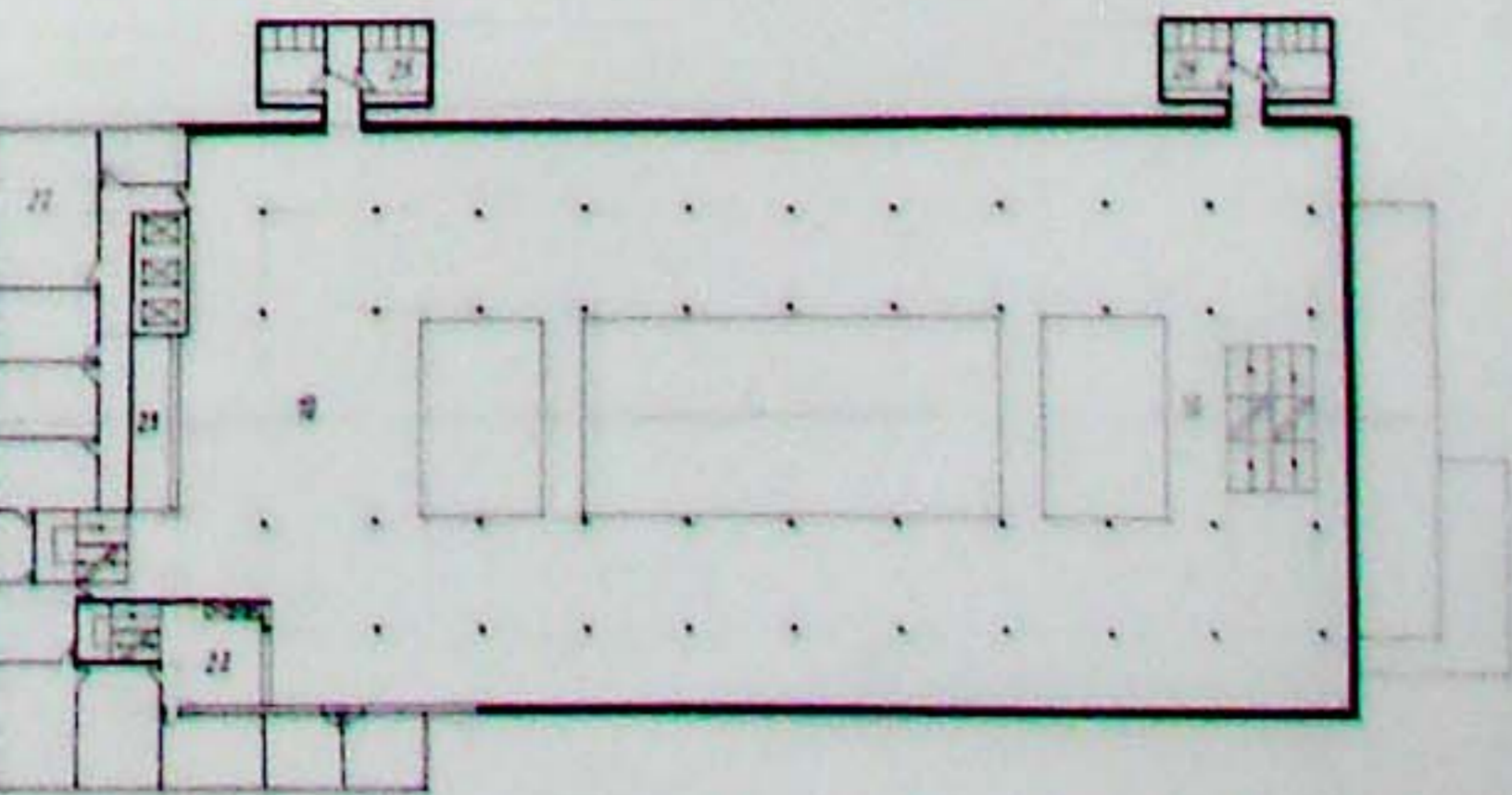
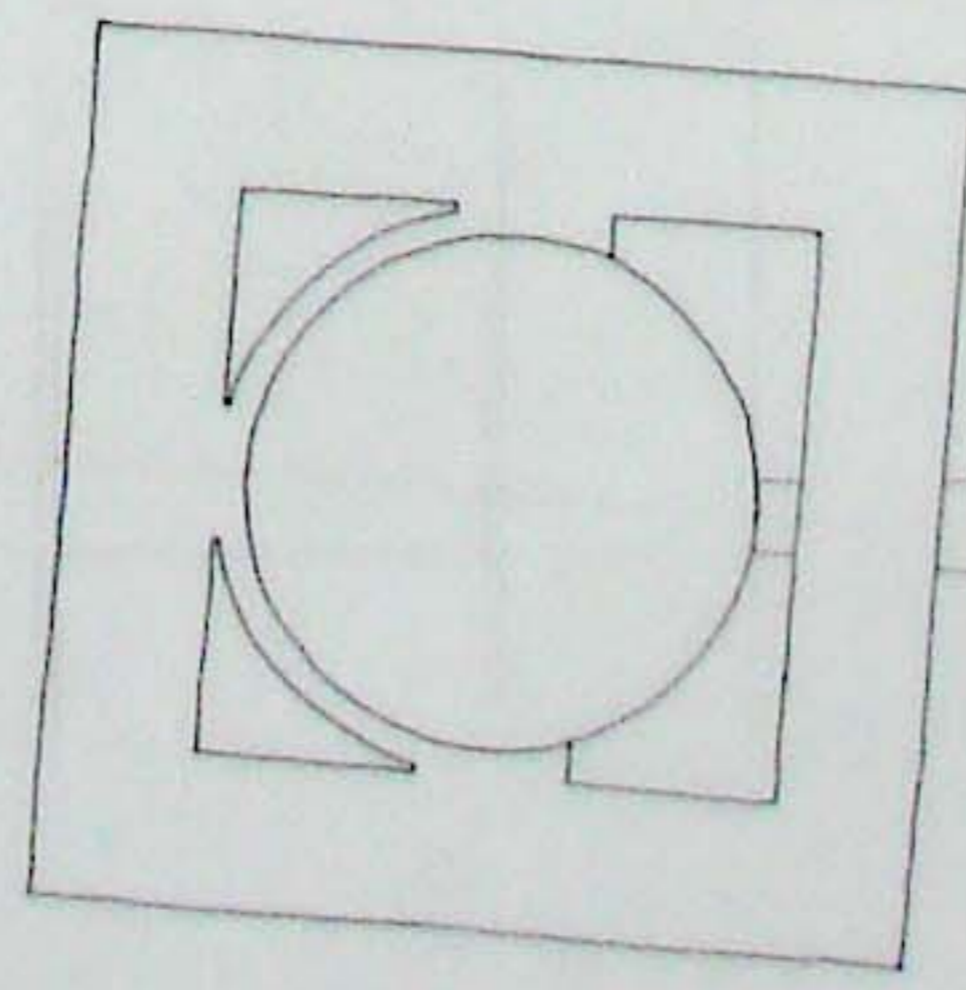
PLAN 7 1:500



PLAN 8 1:500



PLAN 9 1:500



PLAN 10 1:500