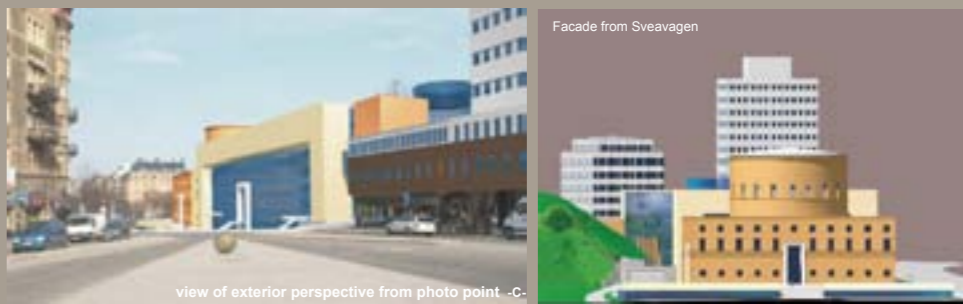




Facade from Odengatan Scale 1:500



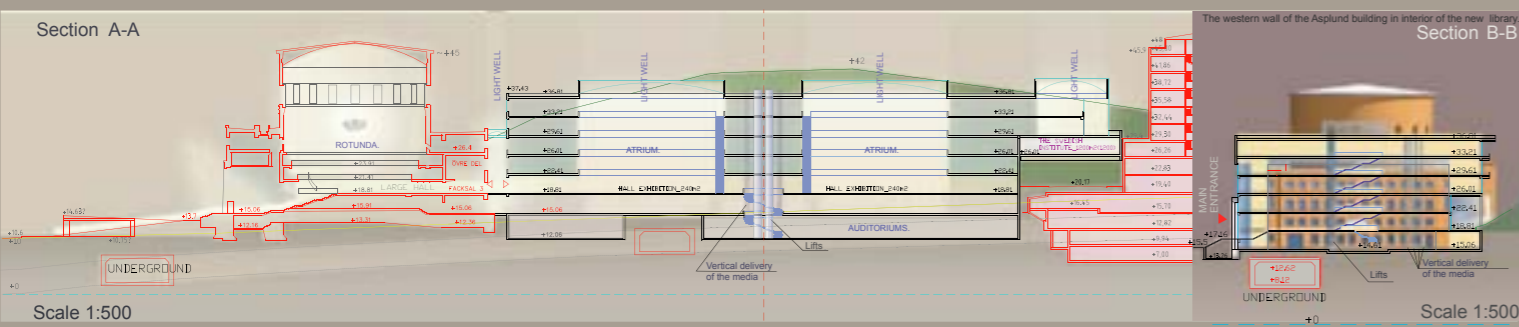
view of exterior perspective from photo point -B-



view of exterior perspective from photo point -C-



view of exterior perspective from photo point -F-

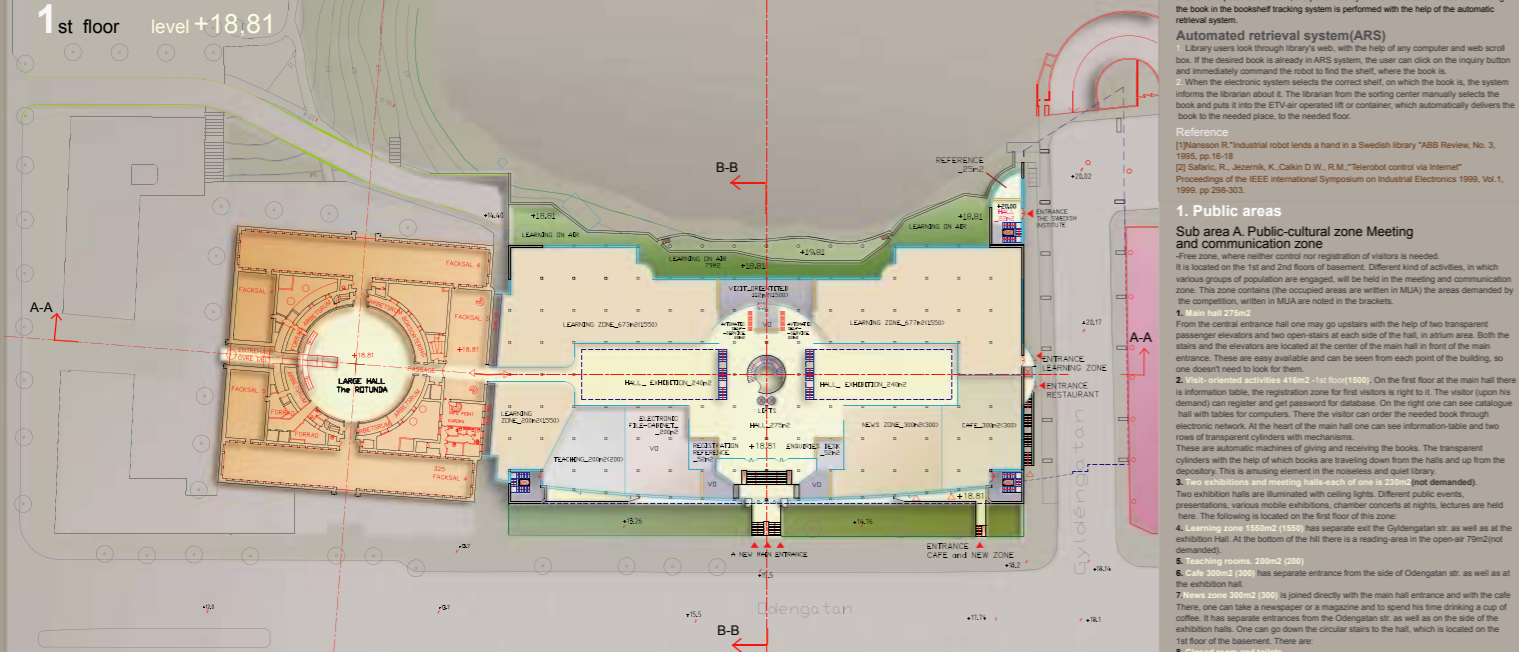
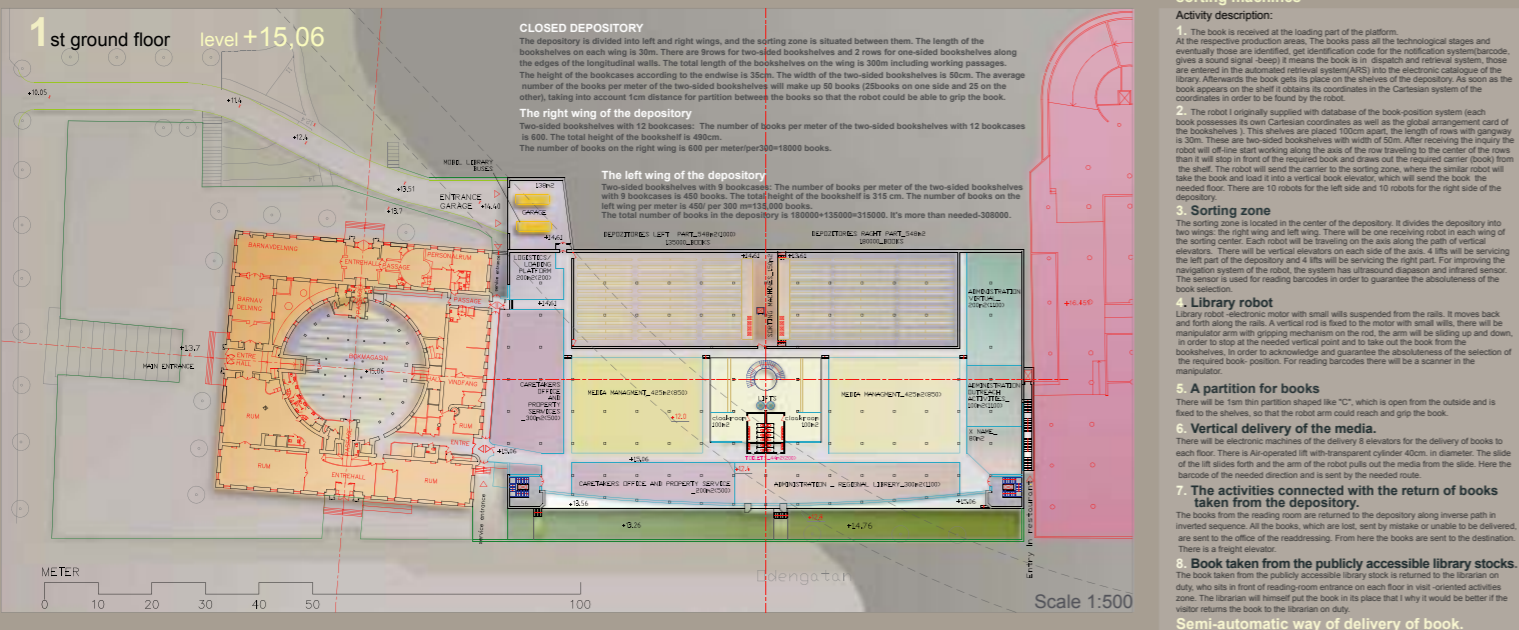


Section A-A Scale 1:500

Section B-B Scale 1:500



Site plan



Scale 1:500



Scale 1:1000



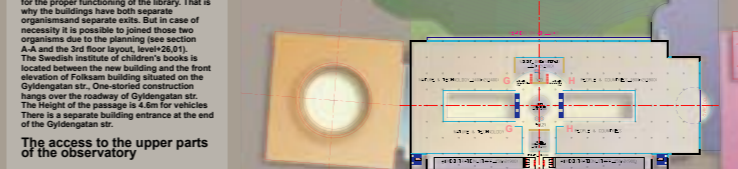
Scale 1:1000



Scale 1:1000



Scale 1:1000



Scale 1:1000



View of exterior perspective from photo point -A-



Scale 1:1000

The connection between the new library, the building Asplund and the city surroundings
Planning and functional connections
 Functional and planning connections were created between the new building and the building Asplund. This measures functionally merged both parts of the library into a single whole.
 For the purpose of keeping the front elevation of the building as a historical value, as well as for the purpose of providing the western part of the building Asplund with natural light a narrow space was left between the Asplund and the new building. Inside the new building from all levels it will be possible to see the western front elevation of Asplund building, see section A-A and B-B, left poster.
 The large rotunda hall of the building Asplund and the exhibition hall of the new building merged into a single space. From the large rotunda hall of the building Asplund it is possible to go through the facade 3 and by the bridge leading between the 2 buildings to get to the first floor of the exhibition hall in the new building. The rotunda hall and the 1st floor of the new building are situated exactly on the same level +18,81 see plan (lay-out) of the 1st floor section A-A. This would be accurate for the Loading Platform/Logistics Center to service both the Asplund building and the new building. Therefore the zone is located between these buildings according to the plan. The entry to the Loading Platform/Logistics Center is on the side of Sveavägen street see the plan (lay-out) of the 1st floor of the basement and the plan of the 1st floor left poster.
 The service elevator and the stairs situated between the building Asplund and the new building will service both the employees of the new part of the library and the employees of the Asplund. On the level of +26,01-4th floor the Administration zone, the Staff of the new building and the working zone of the Asplund link together through a corridor into common working zone see the plan of the 4th floor right poster.
Urban planning connection
 The hill descent and the stairs elevation of the new building continue the theme of symmetry, square and circle of the Asplund building. The glass front elevation of the new building reflects the surrounding buildings and makes itself harmonious with them.
A bridge leading to the city of knowledge
 In order to get to the new building the visitor must walk along the stairs of the bridge through across a ditch. It seems as if the bridge invites you and says:
 "Go into this city and you may find what you have been seeking for a long time. The ditch between the building and the pavement of Odengatan street can serve as a parking place for bicycles and a place for summer cafes. Against the background of the glass front elevation of the main entrance in the form of white portal gate with the bridge situated above the level of the pavement and Odengatan street. They can be seen from Sveavägen street, Odengatan street, Karlbergsvägen and from the underground station on triangular square. See site plan and view of exterior perspective from photo points C, E, left poster.

2. DEPOSITORY MEDIA MANAGEMENT
 This zone is located on the basements of the new building. It has a private entrance from the main hall of the building. The 1st and 2nd floor harmonizes (goes with) with the new library building and becomes part of it, see the plans of the 1st and 2nd floor left and right plane-layers. All the areas in front of the front elevation of the building and on the northern side of the hill are preserved. Due to transparency of the building through a glass front elevation the visual connection of street Odengatan with the hill is provided. Interest arouses not only in the things that are located inside the building but also to the things that are behind the building. It is also possible to see the western front elevation of Asplund building from the street. See view of exterior perspective from photo points C, E, left poster.
The connection of the new building with the hill
 The hill descent and the stairs elevation of the new building continue the theme of symmetry, square and circle of the Asplund building. The glass front elevation of the new building reflects the surrounding buildings and makes itself harmonious with them.
Planning principles
 The following 3 principles were laid on the basis of the planning decision of the new library's internal space:
 Principle of free-pattern floor planning the internal space of the library within each floor as a whole unity, which is not divided by panel concrete walls and partitions. The divisions of the space into separate functional zones and parts will be carried on through element of library technological equipments-desks, stands, bookshelves and shelves and partitions. This principle gives the internal space flexibility and allows transforming the space according to the changing needs of the library. This principle makes the internal space transparent, accessible and clear.
 Principle of noninterfering ways
 The functional division of the internal space into zones is organized so that the technological processes of the library operate concealed and do not interfere each other. The ways and flows of personnel, visitors and books do not intersect with each other.
 Principle of accessibility
 The correct planning of the internal space is in its visual and functional accessibility.
Main Parts. The project areas.
 (The project areas are written in MUA (main usable area) the area demanded by the competition in MUA is written in brackets.)
 1. PUBLIC AREAS - 16 600m² (16 600)
 2. DEPOSITORY MEDIA MANAGEMENT - 2700 m² (2700)
 3. ADMINISTRATION AND STAFF - 3500m² (3500)
 4. Possible external terrace - 1200m² (1200)
 (The Swedish Institute of children's books)
 5. Additional areas without a name - 671m²

The functional zones of the new library building
 The whole building is divided into 3 basic functional zones
 MUA Total : 24 671m² (24000) Gross floor area. Total : 31360m²

Automatic media management and sorting machines

Activity description:
 1. The book is received at the leading part of the platform.
 At the respective production areas, the books pass all the technological stages and eventually those are identified, get identification code for the notification system/barcode, gives a sound signal - beep) it means the book is in dispatch and retrieval system, those are entered in the automated retrieval system(ARS) into the electronic catalogue of the library. Afterwards the book gets its place on the shelves of the depository. As soon as the book appears on the shelf it obtains its coordinates in the Cartesian system of the coordinates in order to be found by the robot.
 2. The robot originally supplied with database of the book-position system (each book possesses its own Cartesian coordinates) as well as the global management card of the bookshelves. This shelves are placed 100cm apart, the length of rows with gateway is 30m. These are two-sided bookshelves with width of 50cm. After receiving the inquiry the robot will off-line start working along the axis of the row traveling to the center of the rows that will stop in front of the required book and draw out the required carrier (book) from the shelf. The robot will send the carrier to the sorting zone, where the similar robot will take the book and load it into a vertical book elevator, which will send the book to the needed floor. There are 10 robots for the left and 10 robots for the right side of the depository.
 3. Sorting zone
 The sorting zone is located in the center of the depository. It divides the depository into two wings, the right wing and left wing. There will be one receiving robot in each wing of the sorting center. Each robot will be traveling on the rail along the path of vertical elevators. There will be vertical elevators on each side of the axis. 4 lifts will be servicing the sorting zone in case of two-sided bookshelves. The distance from the lower bookshelves to the height of the needed direction and is sent by the needed route.
 4. Library robot
 Library robot - electronic motor with small wheels suspended from the rails. It moves back and forth along the rails. A vertical rod is fixed to the motor with small wheels, there will be manipulator arm with gripping mechanism on the rod, the arm will be sliding up and down, in order to stop at the needed vertical point and to take out the book from the bookshelves, in order to acknowledge and guarantee the absoluteness of the selection of the required book-position. For reading barcodes there will be a scanner in the manipulator.
 5. A partition for books
 There will be thin thin partition shaped like "C", which is open from the outside and is fixed to the shelves, so that the robot arm could reach and grip the book.
 6. Vertical delivery of the media.
 There will be electronic machines of the delivery 8 elevators for the delivery of books to each floor. There is Air-operated lift with transparent cylinder 40cm. in diameter. The side of the lift slides forth and the arm of the robot pulls out the media from the side. Here the rod of the needed direction and is sent by the needed route.
 7. The activities connected with the return of books taken from the depository.
 The books from the reading room are returned to the depository along inverse path in inverted sequence. All the books, which are lost, sent by mistake or unable to be delivered, are sent to the office of the readdressing. From here the books are sent to the destination. There is a freight elevator.
 8. Book taken from the publicly accessible library stocks.
 The book taken from the publicly accessible library stock is returned to the librarian on duty, who sits in front of reading room entrance on each floor in visit-oriented activities zone. The librarian will send the book to the place that "why I would be better if the visitor returns the book to the librarian on duty."
Semi-automatic way of delivery of book.
 The functional arrangement of zones allows to use also the semi-automatic system of media delivery. The functional arrangement of zones allows to use also the semi-automatic system of media delivery. The functions of robot, which takes the books from one place to another and puts into the ETV, are performed by man and the other functions of finding the book in the bookshelf tracking system is performed with the help of the automatic retrieval system.

Automated retrieval system(ARS)

1. Library users look through library's web, with the help of any computer and web scroll bar. If the desired book ready in ARS system, the user can click on the inquiry button and immediately command the robot to find the shelf, where the book is.
 2. When the electronic system selects the correct shelf, on which the book is, the system informs the librarian about it. The librarian then, the sorting center robot, selects the book and puts it into the ETV-air operated lift or container, which automatically delivers the book to the needed place, to the needed floor.
Reference
 [1] Hansson, E. Industrial robot lends a hand in a Swedish library "ABB Review, No. 3, 1995, pp.16-18
 [2] Salfaric, R., Jozemik, K., Calkin D.W., R.M., "Telerobot control via internet"
 Proceedings of the IEEE International Symposium on Industrial Electronics 1999, Vol. 1, 1999, pp.298-303.

1. Public areas

Sub-area A. Public-cultural zone Meeting and communication zone
 -Free zone, where neither control nor registration of visitors is needed.
 It is located on the 1st and 2nd floors of basement. Different kind of activities, in which various groups of population are engaged, will be held in meeting and communication zone. This zone contains (the occupied areas are written in MUA) the areas demanded by the competition, written in MUA are noted in brackets.
 1. - 270m² (270)
 From the central entrance hall one may go upstairs with the help of two transparent passenger elevators and two open stairs at each side of the hall, in atrium area. Both the stairs and the elevators are located at the center of the main hall in front of the main entrance. These are easy available and can be seen from each point of the building, so one doesn't need to look for them.
 2. - 120m² (120)
 Two exhibition halls are illuminated with ceiling lights. Different public events, presentations, various mobile exhibitions, concerts and nights, lectures are held here. The following is located on the first floor of this zone:
 4. Learning zone 1550m² (1550) has separate exit the Gyldenstamns str. as well as at the exhibition hall. At the bottom of the hill there is a reading-area in the open-air 70m²(not demanded).
 These are automatic machines of giving and receiving the books. The transparent cylinders with the help of which books are traveling down from the halls and up from the depository. This is amusing element of the recreational and quiet library.
 3. - 120m² (120)
 Two exhibition halls are illuminated with ceiling lights. Different public events, presentations, various mobile exhibitions, concerts and nights, lectures are held here. The following is located on the first floor of this zone:
 4. Learning zone 1550m² (1550) has separate exit the Gyldenstamns str. as well as at the exhibition hall. At the bottom of the hill there is a reading-area in the open-air 70m²(not demanded).
 These are automatic machines of giving and receiving the books. The transparent cylinders with the help of which books are traveling down from the halls and up from the depository. This is amusing element of the recreational and quiet library.
 3. - 120m² (120)
 Two exhibition halls are illuminated with ceiling lights. Different public events, presentations, various mobile exhibitions, concerts and nights, lectures are held here. The following is located on the first floor of this zone:
 4. Learning zone 1550m² (1550) has separate exit the Gyldenstamns str. as well as at the exhibition hall. At the bottom of the hill there is a reading-area in the open-air 70m²(not demanded).
 These are automatic machines of giving and receiving the books. The transparent cylinders with the help of which books are traveling down from the halls and up from the depository. This is amusing element of the recreational and quiet library.
 3. - 120m² (120)
 Two exhibition halls are illuminated with ceiling lights. Different public events, presentations, various mobile exhibitions, concerts and nights, lectures are held here. The following is located on the first floor of this zone:
 4. Learning zone 1550m² (1550) has separate exit the Gyldenstamns str. as well as at the exhibition hall. At the bottom of the hill there is a reading-area in the open-air 70m²(not demanded).
 These are automatic machines of giving and receiving the books. The transparent cylinders with the help of which books are traveling down from the halls and up from the depository. This is amusing element of the recreational and quiet library.
 3. - 120m² (120)
 Two exhibition halls are illuminated with ceiling lights. Different public events, presentations, various mobile exhibitions, concerts and nights, lectures are held here. The following is located on the first floor of this zone:
 4. Learning zone 1550m² (1550) has separate exit the Gyldenstamns str. as well as at the exhibition hall. At the bottom of the hill there is a reading-area in the open-air 70m²(not demanded).
 These are automatic machines of giving and receiving the books. The transparent cylinders with the help of which books are traveling down from the halls and up from the depository. This is amusing element of the recreational and quiet library.
 3. - 120m² (120)
 Two exhibition halls are illuminated with ceiling lights. Different public events, presentations, various mobile exhibitions, concerts and nights, lectures are held here. The following is located on the first floor of this zone:
 4. Learning zone 1550m² (1550) has separate exit the Gyldenstamns str. as well as at the exhibition hall. At the bottom of the hill there is a reading-area in the open-air 70m²(not demanded).
 These are automatic machines of giving and receiving the books. The transparent cylinders with the help of which books are traveling down from the halls and up from the depository. This is amusing element of the recreational and quiet library.
 3. - 120m² (120)
 Two exhibition halls are illuminated with ceiling lights. Different public events, presentations, various mobile exhibitions, concerts and nights, lectures are held here. The following is located on the first floor of this zone:
 4. Learning zone 1550m² (1550) has separate exit the Gyldenstamns str. as well as at the exhibition hall. At the bottom of the hill there is a reading-area in the open-air 70m²(not demanded).
 These are automatic machines of giving and receiving the books. The transparent cylinders with the help of which books are traveling down from the halls and up from the depository. This is amusing element of the recreational and quiet library.
 3. - 120m² (120)
 Two exhibition halls are illuminated with ceiling lights. Different public events, presentations, various mobile exhibitions, concerts and nights, lectures are held here. The following is located on the first floor of this zone:
 4. Learning zone 1550m² (1550) has separate exit the Gyldenstamns str. as well as at the exhibition hall. At the bottom of the hill there is a reading-area in the open-air 70m²(not demanded).
 These are automatic machines of giving and receiving the books. The transparent cylinders with the help of which books are traveling down from the halls and up from the depository. This is amusing element of the recreational and quiet library.
 3. - 120m² (120)
 Two exhibition halls are illuminated with ceiling lights. Different public events, presentations, various mobile exhibitions, concerts and nights, lectures are held here. The following is located on the first floor of this zone:
 4. Learning zone 1550m² (1550) has separate exit the Gyldenstamns str. as well as at the exhibition hall. At the bottom of the hill there is a reading-area in the open-air 70m²(not demanded).
 These are automatic machines of giving and receiving the books. The transparent cylinders with the help of which books are traveling down from the halls and up from the depository. This is amusing element of the recreational and quiet library.
 3. - 120m² (120)
 Two exhibition halls are illuminated with ceiling lights. Different public events, presentations, various mobile exhibitions, concerts and nights, lectures are held here. The following is located on the first floor of this zone:
 4. Learning zone 1550m² (1550) has separate exit the Gyldenstamns str. as well as at the exhibition hall. At the bottom of the hill there is a reading-area in the open-air 70m²(not demanded).
 These are automatic machines of giving and receiving the books. The transparent cylinders with the help of which books are traveling down from the halls and up from the depository. This is amusing element of the recreational and quiet library.
 3. - 120m² (120)
 Two exhibition halls are illuminated with ceiling lights. Different public events, presentations, various mobile exhibitions, concerts and nights, lectures are held here. The following is located on the first floor of this zone:
 4. Learning zone 1550m² (1550) has separate exit the Gyldenstamns str. as well as at the exhibition hall. At the bottom of the hill there is a reading-area in the open-air 70m²(not demanded).
 These are automatic machines of giving and receiving the books. The transparent cylinders with the help of which books are traveling down from the halls and up from the depository. This is amusing element of the recreational and quiet library.
 3. - 120m² (120)
 Two exhibition halls are illuminated with ceiling lights. Different public events, presentations, various mobile exhibitions, concerts and nights, lectures are held here. The following is located on the first floor of this zone:
 4. Learning zone 1550m² (1550) has separate exit the Gyldenstamns str. as well as at the exhibition hall. At the bottom of the hill there is a reading-area in the open-air 70m²(not demanded).
 These are automatic machines of giving and receiving the books. The transparent cylinders with the help of which books are traveling down from the halls and up from the depository. This is amusing element of the recreational and quiet library.
 3. - 120m² (120)
 Two exhibition halls are illuminated with ceiling lights. Different public events, presentations, various mobile exhibitions, concerts and nights, lectures are held here. The following is located on the first floor of this zone:
 4. Learning zone 1550m² (1550) has separate exit the Gyldenstamns str. as well as at the exhibition hall. At the bottom of the hill there is a reading-area in the open-air 70m²(not demanded).
 These are automatic machines of giving and receiving the books. The transparent cylinders with the help of which books are traveling down from the halls and up from the depository. This is amusing element of the recreational and quiet library.
 3. - 120m² (120)
 Two exhibition halls are illuminated with ceiling lights. Different public events, presentations, various mobile exhibitions, concerts and nights, lectures are held here. The following is located on the first floor of this zone:
 4. Learning zone 1550m² (1550) has separate exit the Gyldenstamns str. as well as at the exhibition hall. At the bottom of the hill there is a reading-area in the open-air 70m²(not demanded).
 These are automatic machines of giving and receiving the books. The transparent cylinders with the help of which books are traveling down from the halls and up from the depository. This is amusing element of the recreational and quiet library.
 3. - 120m² (120)
 Two exhibition halls are illuminated with ceiling lights. Different public events, presentations, various mobile exhibitions, concerts and nights, lectures are held here. The following is located on the first floor of this zone:
 4. Learning zone 1550m² (1550) has separate exit the Gyldenstamns str. as well as at the exhibition hall. At the bottom of the hill there is a reading-area in the open-air 70m²(not demanded).
 These are automatic machines of giving and receiving the books. The transparent cylinders with the help of which books are traveling down from the halls and up from the depository. This is amusing element of the recreational and quiet library.
 3. - 120m² (120)
 Two exhibition halls are illuminated with ceiling lights. Different public events, presentations, various mobile exhibitions, concerts and nights, lectures are held here. The following is located on the first floor of this zone:
 4. Learning zone 1550m² (1550) has separate exit the Gyldenstamns str. as well as at the exhibition hall. At the bottom of the hill there is a reading-area in the open-air 70m²(not demanded).
 These are automatic machines of giving and receiving the books. The transparent cylinders with the help of which books are traveling down from the halls and up from the depository. This is amusing element of the recreational and quiet library.
 3. - 120m² (120)
 Two exhibition halls are illuminated with ceiling lights. Different public events, presentations, various mobile exhibitions, concerts and nights, lectures are held here. The following is located on the first floor of this zone:
 4. Learning zone 1550m² (1550) has separate exit the Gyldenstamns str. as well as at the exhibition hall. At the bottom of the hill there is a reading-area in the open-air 70m²(not demanded).
 These are automatic machines of giving and receiving the books. The transparent cylinders with the help of which books are traveling down from the halls and up from the depository. This is amusing element of the recreational and quiet library.
 3. - 120m² (120)
 Two exhibition halls are illuminated with ceiling lights. Different public events, presentations, various mobile exhibitions, concerts and nights, lectures are held here. The following is located on the first floor of this zone:
 4. Learning zone 1550m² (1550) has separate exit the Gyldenstamns str. as well as at the exhibition hall. At the bottom of the hill there is a reading-area in the open-air 70m²(not demanded).
 These are automatic machines of giving and receiving the books. The transparent cylinders with the help of which books are traveling down from the halls and up from the depository. This is amusing element of the recreational and quiet library.
 3. - 120m² (120)
 Two exhibition halls are illuminated with ceiling lights. Different public events, presentations, various mobile exhibitions, concerts and nights, lectures are held here. The following is located on the first floor of this zone:
 4. Learning zone 1550m² (1550) has separate exit the Gyldenstamns str. as well as at the exhibition hall. At the bottom of the hill there is a reading-area in the open-air 70m²(not demanded).
 These are automatic machines of giving and receiving the books. The transparent cylinders with the help of which books are traveling down from the halls and up from the depository. This is amusing element of the recreational and quiet library.
 3. - 120m² (120)
 Two exhibition halls are illuminated with ceiling lights. Different public events, presentations, various mobile exhibitions, concerts and nights, lectures are held here. The following is located on the first floor of this zone:
 4. Learning zone 1550m² (1550) has separate exit the Gyldenstamns str. as well as at the exhibition hall. At the bottom of the hill there is a reading-area in the open-air 70m²(not demanded).
 These are automatic machines of giving and receiving the books. The transparent cylinders with the help of which books are traveling down from the halls and up from the depository. This is amusing element of the recreational and quiet library.
 3. - 120m² (120)
 Two exhibition halls are illuminated with ceiling lights. Different public events, presentations, various mobile exhibitions, concerts and nights, lectures are held here. The following is located on the first floor of this zone:
 4. Learning zone 1550m² (1550) has separate exit the Gyldenstamns str. as well as at the exhibition hall. At the bottom of the hill there is a reading-area in the open-air 70m²(not demanded).
 These are automatic machines of giving and receiving the books. The transparent cylinders with the help of which books are traveling down from the halls and up from the depository. This is amusing element of the recreational and quiet library.
 3. - 120m² (120)
 Two exhibition halls are illuminated with ceiling lights. Different public events, presentations, various mobile exhibitions, concerts and nights, lectures are held here. The following is located on the first floor of this zone:
 4. Learning zone 1550m² (1550) has separate exit the Gyldenstamns str. as well as at the exhibition hall. At the bottom of the hill there is a reading-area in the open-air 70m²(not demanded).
 These are automatic machines of giving and receiving the books. The transparent cylinders with the help of which books are traveling down from the halls and up from the depository. This is amusing element of the recreational and quiet library.
 3. - 120m² (120)
 Two exhibition halls are illuminated with ceiling lights. Different public events, presentations, various mobile exhibitions, concerts and nights, lectures are held here. The following is located on the first floor of this zone:
 4. Learning zone 1550m² (1550) has separate exit the Gyldenstamns str. as well as at the exhibition hall. At the bottom of the hill there is a reading-area in the open-air 70m²(not demanded).
 These are automatic machines of giving and receiving the books. The transparent cylinders with the help of which books are traveling down from the halls and up from the depository. This is amusing element of the recreational and quiet library.
 3. - 120m² (120)
 Two exhibition halls are illuminated with ceiling lights. Different public events, presentations, various mobile exhibitions, concerts and nights, lectures are held here. The following is located on the first floor of this zone:
 4. Learning zone 1550m² (1550) has separate exit the Gyldenstamns str. as well as at the exhibition hall. At the bottom of the hill there is a reading-area in the open-air 70m²(not demanded).
 These are automatic machines of giving and receiving the books. The transparent cylinders with the help of which books are traveling down from the halls and up from the depository. This is amusing element of the recreational and quiet library.
 3. - 120m² (120)
 Two exhibition halls are illuminated with ceiling lights. Different public events, presentations, various mobile exhibitions, concerts and nights, lectures are held here. The following is located on the first floor of this zone:
 4. Learning zone 1550m² (1550) has separate exit the Gyldenstamns str. as well as at the exhibition hall. At the bottom of the hill there is a reading-area in the open-air 70m²(not demanded).
 These are automatic machines of giving and receiving the books. The transparent cylinders with the help of which books are traveling down from the halls and up from the depository. This is amusing element of the recreational and quiet library.
 3. - 120m² (120)
 Two exhibition halls are illuminated with ceiling lights. Different public events, presentations, various mobile exhibitions, concerts and nights, lectures are held here. The following is located on the first floor of this zone:
 4. Learning zone 1550m² (1550) has separate exit the Gyldenstamns str. as well as at the exhibition hall. At the bottom of the hill there is a reading-area in the open-air 70m²(not demanded).
 These are automatic machines of giving and receiving the books. The transparent cylinders with the help of which books are traveling down from the halls and up from the depository. This is amusing element of the recreational and quiet library.
 3. - 120m² (120)
 Two exhibition halls are illuminated with ceiling lights. Different public events, presentations, various mobile exhibitions, concerts and nights, lectures are held here. The following is located on the first floor of this zone:
 4. Learning zone 1550m² (1550) has separate exit the Gyldenstamns str. as well as at the exhibition hall. At the bottom of the hill there is a reading-area in the open-air 70m²(not demanded).
 These are automatic machines of giving and receiving the books. The transparent cylinders with the help of which books are traveling down from the halls and up from the depository. This is amusing element of the recreational and quiet library.
 3. - 120m² (120)
 Two exhibition halls are illuminated with ceiling lights. Different public events, presentations, various mobile exhibitions, concerts and nights, lectures are held here. The following is located on the first floor of this zone:
 4. Learning zone 1550m² (1550) has separate exit the Gyldenstamns str. as well as at the exhibition hall. At the bottom of the hill there is a reading-area in the open-air 70m²(not demanded).
 These are automatic machines of giving and receiving the books. The transparent cylinders with the help of which books are traveling down from the halls and up from the depository. This is amusing element of the recreational and quiet library.
 3. - 120m² (120)
 Two exhibition halls are illuminated with ceiling lights. Different public events, presentations, various mobile exhibitions, concerts and nights, lectures are held here. The following is located on the first floor of this zone:
 4. Learning zone 1550m² (1550) has separate exit the Gyldenstamns str. as well as at the exhibition hall. At the bottom of the hill there is a reading-area in the open-air 70m²(not demanded).
 These are automatic machines of giving and receiving the books. The transparent cylinders with the help of which books are traveling down from the halls and up from the depository. This is amusing element of the recreational and quiet library.
 3. - 120m² (120)
 Two exhibition halls are illuminated with ceiling lights. Different public events, presentations, various mobile exhibitions, concerts and nights, lectures are held here. The following is located on the first floor of this zone:
 4. Learning zone 1550m² (1550) has separate exit the Gyldenstamns str. as well as at the exhibition hall. At the bottom of the hill there is a reading-area in the open-air 70m²(not demanded).
 These are automatic machines of giving and receiving the books. The transparent cylinders with the help of which books are traveling down from the halls and up from the depository. This is amusing element of the recreational and quiet library.
 3. - 120m² (120)
 Two exhibition halls are illuminated with ceiling lights. Different public events, presentations, various mobile exhibitions, concerts and nights, lectures are held here. The following is located on the first floor of this zone:
 4. Learning zone 1550m² (1550) has separate exit the Gyldenstamns str. as well as at the exhibition hall. At the bottom of the hill there is a reading-area in the open-air 70m²(not demanded).
 These are automatic machines of giving and receiving the books. The transparent cylinders with the help of which books are traveling down from the halls and up from the depository. This is amusing element of the recreational and quiet library.
 3. - 120m² (120)
 Two exhibition halls are illuminated with ceiling lights. Different public events, presentations, various mobile exhibitions, concerts and nights, lectures are held here. The following is located on the first floor of this zone:
 4. Learning zone 1550m² (1550) has separate exit the Gyldenstamns str. as well as at the exhibition hall. At the bottom of the hill there is a reading-area in the open-air 70m²(not demanded).
 These are automatic machines of giving and receiving the books. The transparent cylinders with the help of which books are traveling down from the halls and up from the depository. This is amusing element of the recreational and quiet library.
 3. - 120m² (120)
 Two exhibition halls are illuminated with ceiling lights. Different public events, presentations, various mobile exhibitions, concerts and nights, lectures are held here. The following is located on the first floor of this zone:
 4. Learning zone 1550m² (1550) has separate exit the Gyldenstamns str. as well as at the exhibition hall. At the bottom of the hill there is a reading-area in the open-air 70m²(not demanded).
 These are automatic machines of giving and receiving the books. The transparent cylinders with the help of which books are traveling down from the halls and up from the depository. This is amusing element of the recreational and quiet library.
 3. - 120m² (120)
 Two exhibition halls are illuminated with ceiling lights. Different public events, presentations, various mobile exhibitions, concerts and nights, lectures are held here. The following is located on the first floor of this zone:
 4. Learning zone 1550m² (1550) has separate exit the Gyldenstamns str. as well as at the exhibition hall. At the bottom of the hill there is a reading-area in the open-air 70m²(not demanded).
 These are automatic machines of giving and receiving the books. The transparent cylinders with the help of which books are traveling down from the halls and up from the depository. This is amusing element of the recreational and quiet library.
 3. - 120m² (120)
 Two exhibition halls are illuminated with ceiling lights. Different public events, presentations, various mobile exhibitions, concerts and nights, lectures are held here. The following is located on the first floor of this zone:
 4. Learning zone 1550m² (1550) has separate exit the Gyldenstamns str. as well as at the exhibition hall. At the bottom of the hill there is a reading-area in the open-air 70m²(not demanded).
 These are automatic machines of giving and receiving the books. The transparent cylinders with the help of which books are traveling down from the halls and up from the depository. This is amusing element of the recreational and quiet library.
 3. - 120m² (120)
 Two exhibition halls are illuminated with ceiling lights. Different public events, presentations, various mobile exhibitions, concerts and nights, lectures are held here. The following is located on the first floor of this zone:
 4. Learning zone 1550m² (1550) has separate exit the Gyldenstamns str. as well as at the exhibition hall. At the bottom of the hill there is a reading-area in the open-air 70m²(not demanded).
 These are automatic machines of giving and receiving the books. The transparent cylinders with the help of which books are traveling down from the halls and up from the depository. This is amusing element of the recreational and quiet library.
 3. - 120m² (120)
 Two exhibition halls are illuminated with ceiling lights. Different public events, presentations, various mobile exhibitions, concerts and nights, lectures are held here. The following is located on the first floor of this zone:
 4. Learning zone 1550m² (1550) has separate exit the Gyldenstamns str. as well as at the exhibition hall. At the bottom of the hill there is a reading-area in the open-air 70m²(not demanded).
 These are automatic machines of giving and receiving the books. The transparent cylinders with the help of which books are traveling down from the halls and up from the depository. This is amusing element of the recreational and quiet library.
 3. - 120m² (120)
 Two exhibition halls are illuminated with ceiling lights. Different public events, presentations, various mobile exhibitions, concerts and nights, lectures are held here. The following is located on the first floor of this zone:
 4. Learning zone 1550m² (1550) has separate exit the Gyldenstamns str. as well as at the exhibition hall. At the bottom of the hill there is a reading-area in the open-air 70m²(not demanded).
 These are automatic machines of giving and receiving the books. The transparent cylinders with the help of which books are traveling down from the halls and up from the depository. This is amusing element of the recreational and quiet library.
 3. - 120m² (120)
 Two exhibition halls are illuminated with ceiling lights. Different public events, presentations, various mobile exhibitions, concerts and nights, lectures are held here. The following is located on the first floor of this zone:
 4. Learning zone 1550m²