

Asplund

Architectural Competition
The Stockholm Library

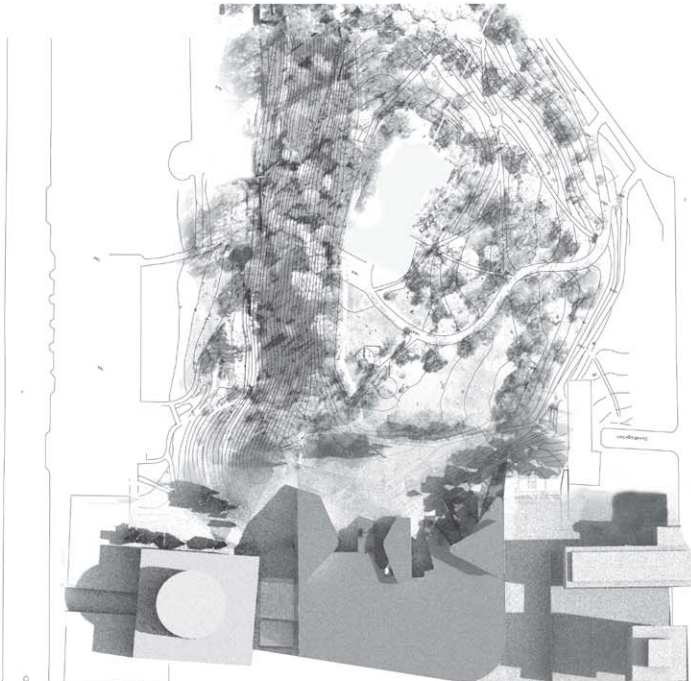
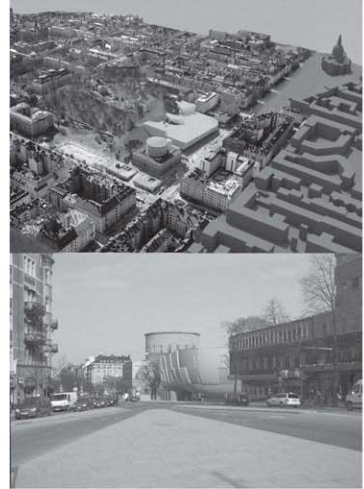


The Asplund Library

The project is a freestanding edifice. It intentionally continues the existing disposition of Asplunds library rather than developing a new organisational principle. It repeats the motif of an edifice elevated upon a base used in The Asplund Library where it is most poignantly expressed at the façade facing Sveavägen. The new building does so by pulling back the ground level of the structure in a curvature pointing inwards towards the interior. The base of the new building is the street level that continues the base level of The Asplund Library in a gentle slope towards Odenplan. The repetition of the motif is an important aspect of a general ambition that seeks to integrate the new building in the existing context. In this case by continuing an already existing organisational principle and extending it in such a way that it is oriented towards the surrounding city.

Odenplan

With the future development of the subway and the possible construction of a shopping centre below the ground level at Odenplan the need arises to create a tight connection between the library, the square and through the subway the city of Stockholm as a whole. This connection is emphasized in logistic terms by making an underground passage from the rounded corner of the new building under Gyldegatan that facilitates circulation between the library and the subway. In compositional and visual terms the relation is established by pulling back the façade of the new building facing Odengatan in such a way that it mediates between the axis of The Asplund Library initially created at Sveavägen and the diagonal of Odenplan. This emphasizes simultaneously the existing façade of The Asplund Library as it elaborates the curvature of the new building. The pattern of the façade is the result of a rhythmic variation between transparent and solid elements.



Site plan. 1:1000

The Observatory Hill

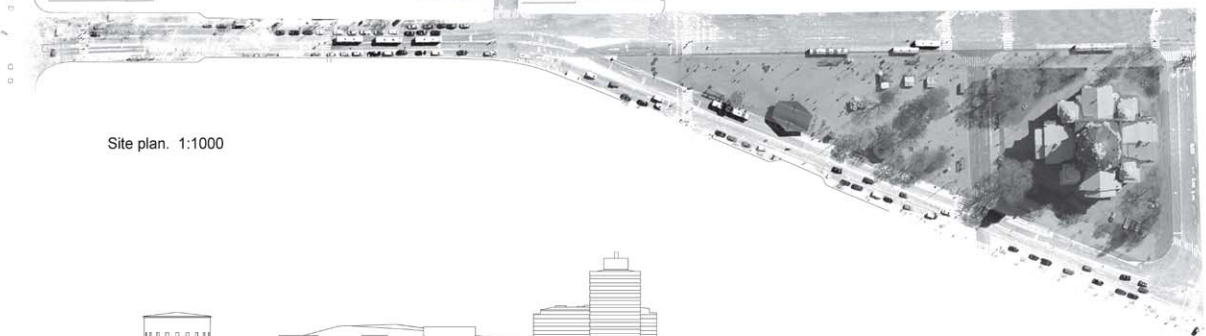
At the rear end of the new building the Observatory Hill is integrated into the overall composition. The wholeness of the building, as it presents itself towards Odengatan, is divided into smaller plateaus and crevices towards the hill that mediates the building and the hill. Some of the plateaus are intended to be accessible from the hill in the form of smaller library gardens. The zone between the hill and the new library is thus articulated as a wickerwork that facilitates many degrees of both study and leisure.

The Main Entrance

The main entrance serves as a hinge between the existing building and the new addition both in logistic and in symbolic terms. It is situated between the existing library and the new addition. From this point, the two buildings are equally and easily accessible. In this way the relation between the two buildings is balanced in such a way that The Asplund Library is not diminished in importance by the larger amount of books and public areas placed in the new building. It is of historical significance that the entrance to The Asplund Library on the side of the new building is re-established as an important entrance to the existing library.



Elevation seen from Sveavägen. 1:1000



Elevation seen from Odengatan. 1:1000



The Main Level

The main level is reached directly from the main entrance. The main level continues the level in the central rotunda of The Asplund Library through the new building to the corner between Odengatan og Gyldengatan at which point it coincides with the street level thus establishing a spatial link between the principal agents in the overall composition.

The entrance is the place at which the main return of the books is situated. It is close to the sorting machine below. The current service entrance is moved to the far end of Gyldengatan from which the 15.06 level is reached by a ramp.

At the main level fiction literature is placed thus separating the subject areas connected to study activities that need privacy from the main circulation

Round the clock

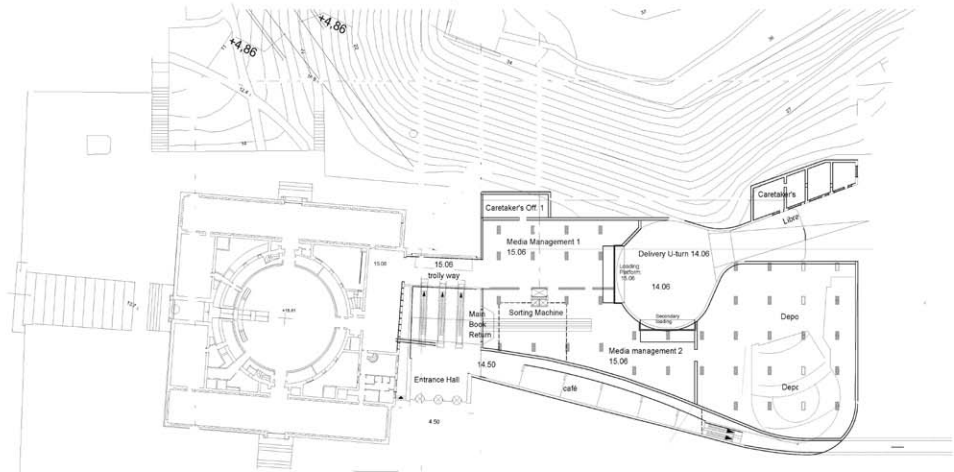
Along the inside of the curved façade the round the clock zone is placed. It is organized in such a way that it can be used without admitting the public into the rest of the library.

Close to the main entrance the café is placed. It is also the area for smaller programs such as a bookstore. The learning zone is placed along Gyldengatan with a separate entrance. Because of the close relation between Gyldengatan and Odenplan this partly independent organism is given a prominent outward position despite of its more peripheral internal placement.

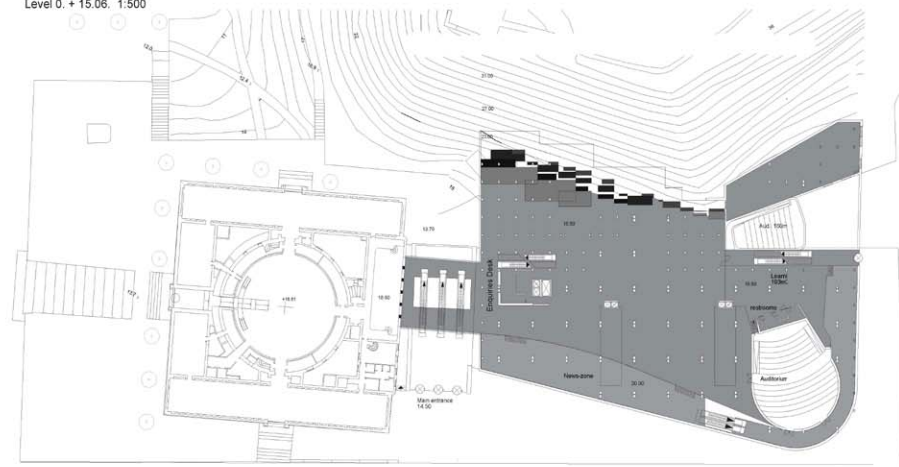
The Subject Areas

In The Asplund Library The Children's Fiction Library, People and Countries and Aesthetics are placed.

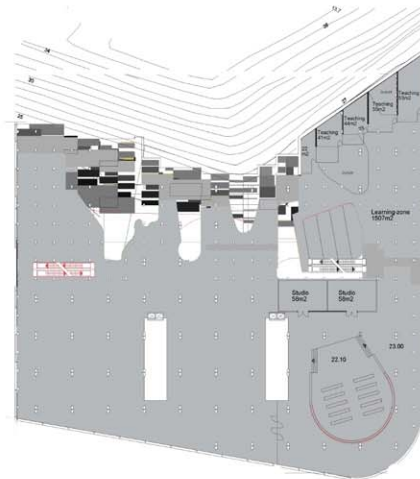
The remaining subject areas are placed in the new building. The floors are organized in such a way that the larger spaces are situated towards the façade facing Odengatan. The books are concentrated in the centre of the building. At the back the floors are divided into smaller rooms in close connection to the hill thus providing secluded study rooms.



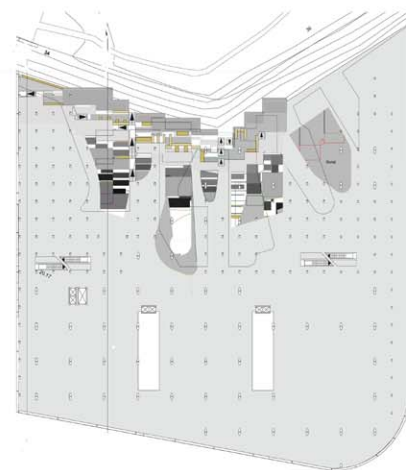
Level 0. +15.06. 1:500



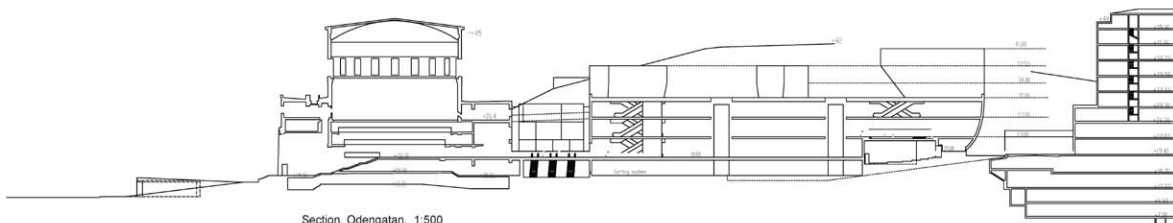
Level 1 / Main Level. +18.08. 1:500 Subject Areas: Fiction People and Countries, Aesthetics and Childrens Fiction in The Asplund Library



Level 3. +23.0. 1:500 Subject areas: Foreign Languages and The Arts.



Level 4. +27.0. 1:500 Subject areas: Nature and Technology, Civic Studies and Young People.



Section. Odengatan. 1:500