

With the diverse possibilities to access information in our modern society the status of the library has been diluted. The library must reinvent itself and reemerge as a new physical, mental, and social center, inspiring new communication, relationships, and knowledge between people and information.

The Stockholm library today has the possibility to enrich the lives of the community by activating experiences, different experiences – from public forums to individual contemplative spaces. It is a balance to provoke people to knowledge without becoming an entertainment center.

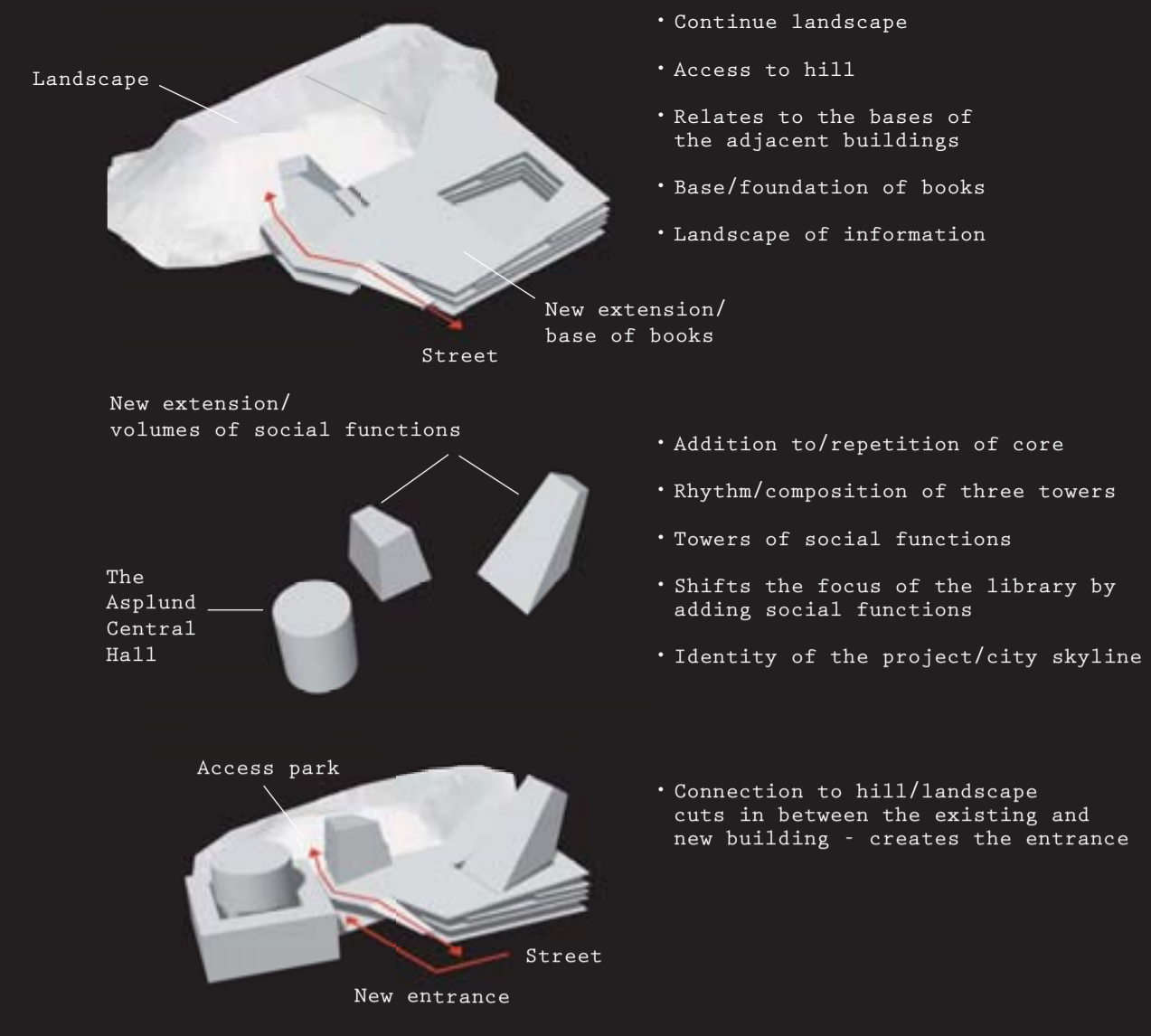
The wish for the new library project is to shift the focus of the library from storage/passive to experience/active. The object/media as center is replaced by the social space. Information and knowledge remain as the core values of the new library, but the focus is shifted towards a more active communication of that knowledge.

Urban composition A main concern of the Stockholm library project is the new buildings relationship to the original asplund building.

The strategy is to add two more volumes/towers to the library in the same way that the asplund building has a central volume. This creates a compositional rhythm of not just one, but three cores.

While the existing volume, traditionally contains books, the two new volumes will house social functions. This causes a shift in the focus of the new library from revolving around the book to bringing interaction between people to the center.

The asplund building is maintained as 'a temple of books'. It was built to display books. It will house the fiction subject area, an area with a broad and large user group, as well as the news



zone, traditionally a lively area with relatively short but frequent stays. This will insure that the asplund building is infused with life. The more research intensive functions are gathered in the new extension.

The two new volumes house all the functions related to communication and the act of interpreting the information. The larger of the two volumes is a study hall that has a separate entrance for after hours activities. The study hall contains both enclosed study cells as well as open group areas - to facilitate a variety of experiences. The smaller volume which is partly integrated into the hill houses auditoriums and teaching rooms. This volumes has a media facade which is visible from the new main entrance on Odengatan.

The two towers create a visual connection and transition between the asplund building and the diligentia high-rise block as well as create a new identity for the library.

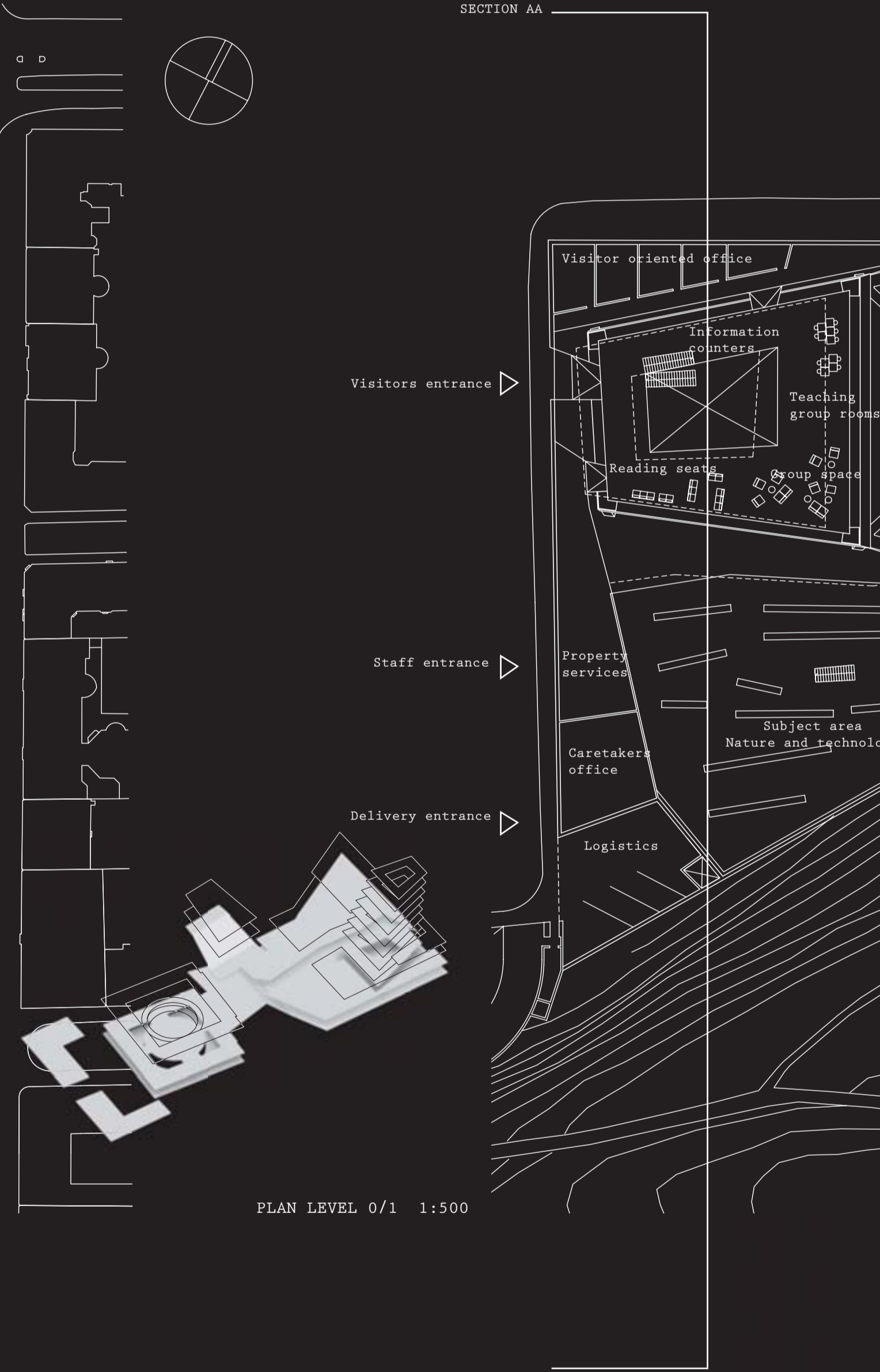
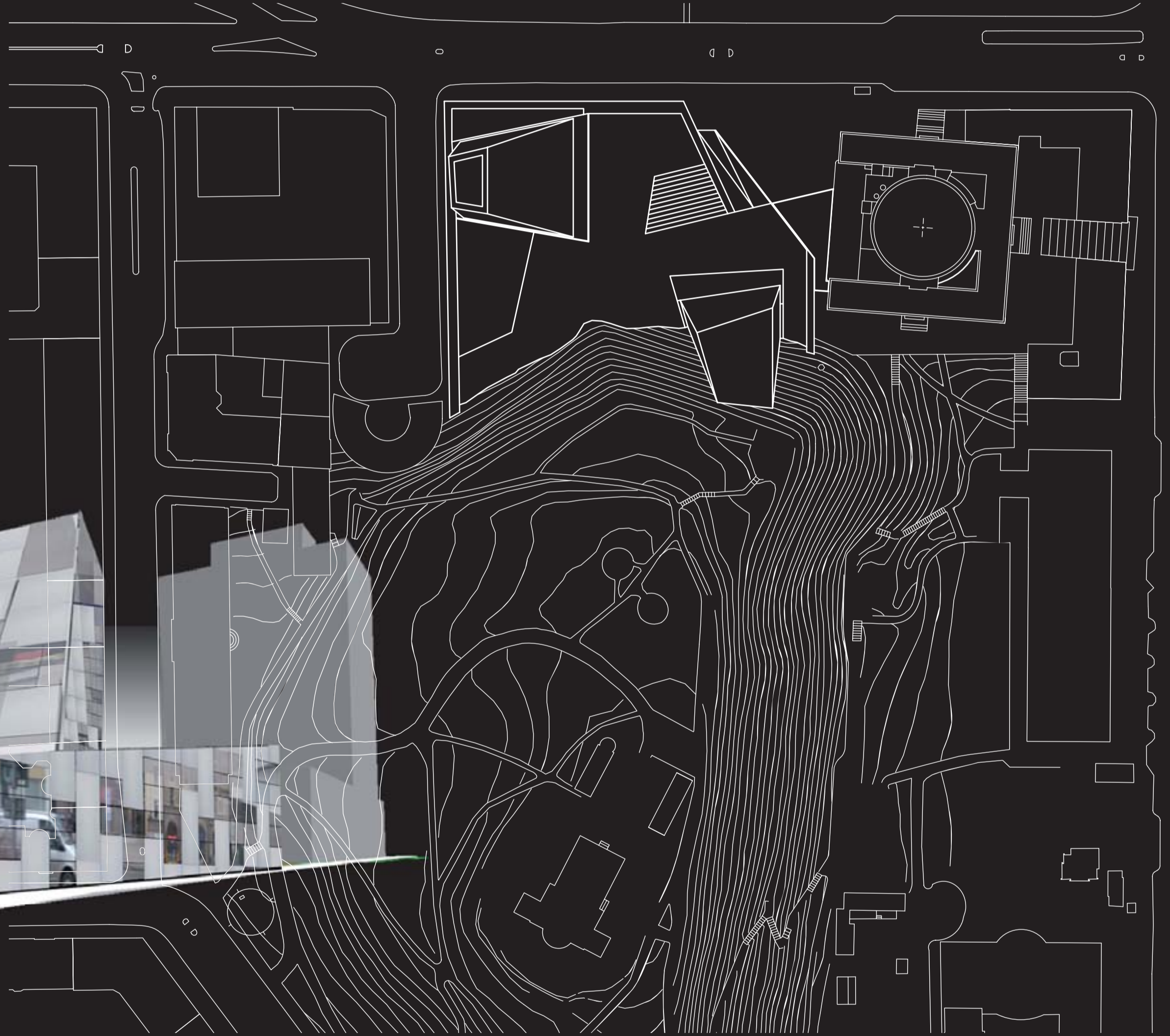
Landscape of information The new library project connects and literally gives access to the observatory hill park.

The base of the project is a continuation of this landscape - it creates a new type of transition between the city and the hill. The 'landscape' functions as a foundation for the towers and the library as a whole - it houses all the media areas.

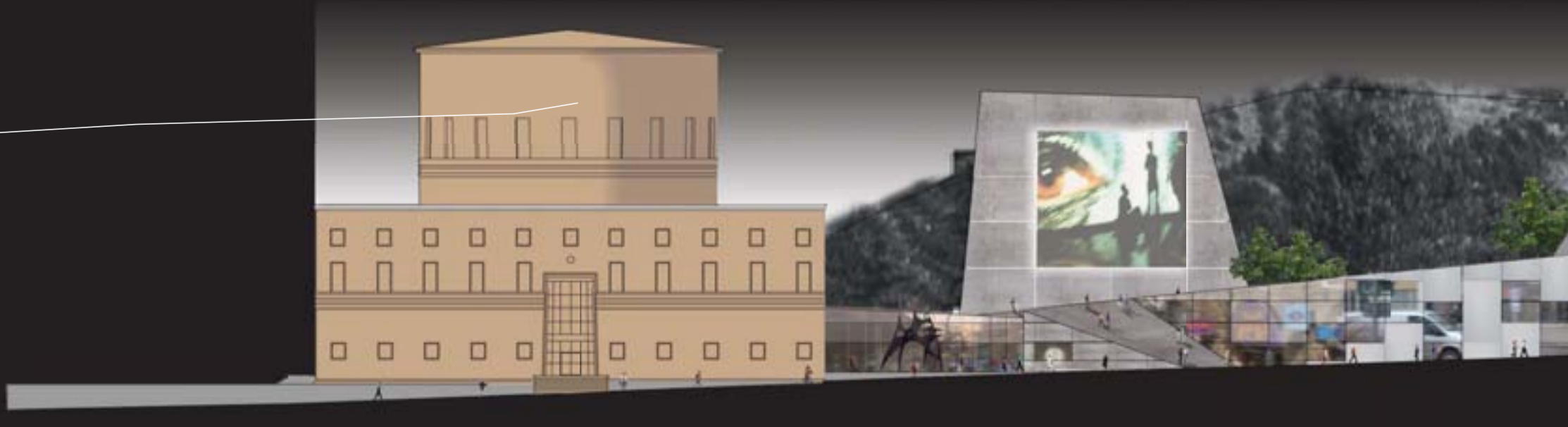
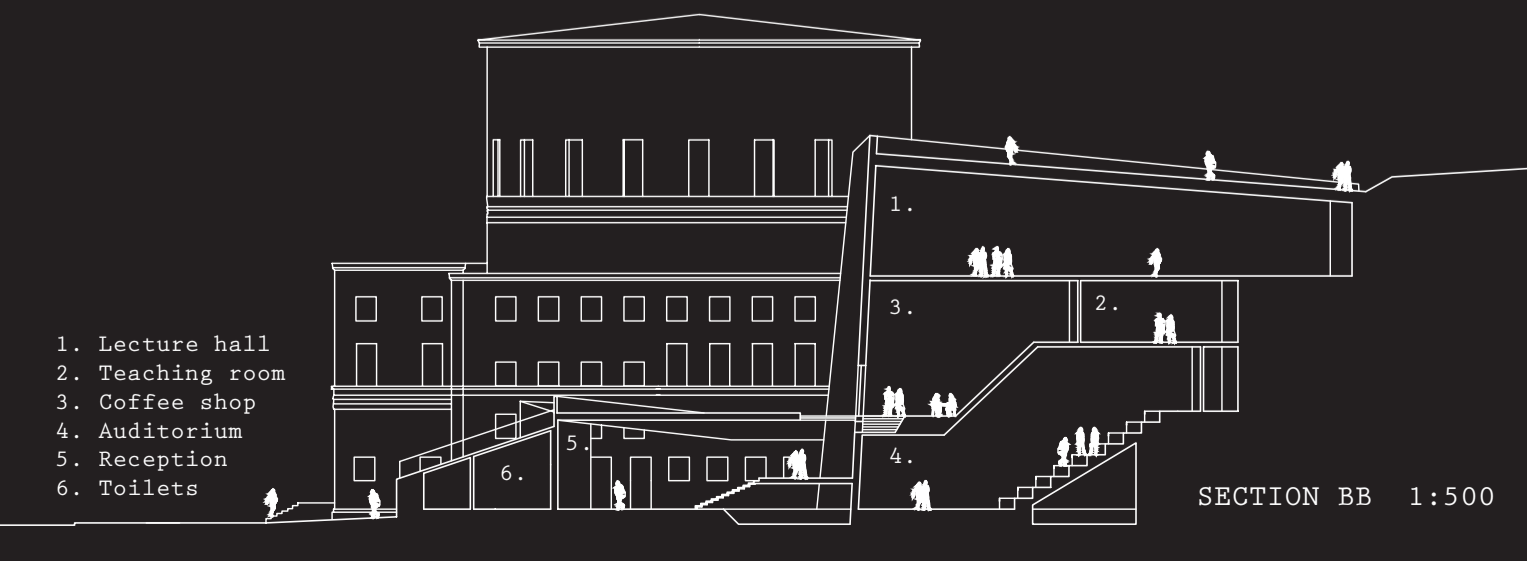
The base of the new library corresponds to and makes a transition between the bases of the surrounding buildings. The towers cut into and through the base and are visible from and dominate the interior space.



SITEPLAN 1:1000



FACADE ODENGATAN 1:500



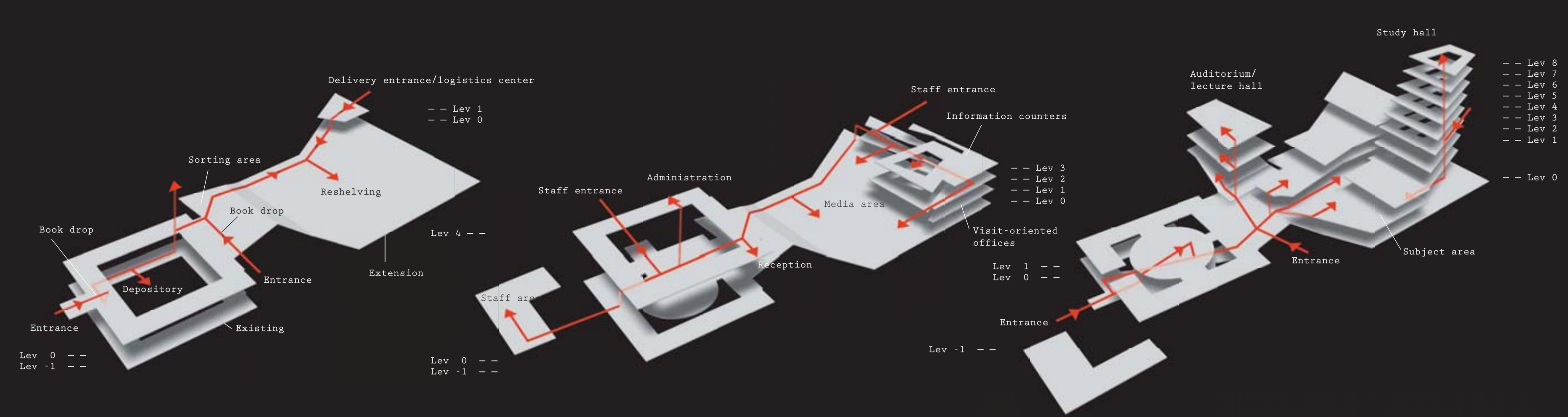
This base of books is one large flexible area where future developments and reorganizations will be possible. The structure of the four story high base is incorporated into the shelving. The media area also has playrooms incorporated, which makes it possible for parents to bring their children and for the children to play and learn.

The lightly sloped roof of the base doubles as a city space. The roof has an open-air projection screen with sloped seating, outdoor study areas, access to a coffee shop with outdoor serving and a playground area which extends onto the hill.

A ramp leads directly from odengatan to the roof of the base and to the observatory park. The access to the park cuts across the new and existing library and connects the city to the park.

The new main entrance is placed between the existing and new building. The extension cuts back from the streets and creates a plaza in front of the entrance. The new entrance draws the flow of people in the streets into the building or up on the roofscape and further on to the hill.

The entrance is glass covered - which makes it a light, open and inviting space. From the reception area on the entrance level there is a connection to the asplund



building for both media, staff and visitors. Physically, the asplund building and the new extension remain two separate entities - joined delicately and with respect for the historic asplund building - but programmatically one library, closely interlinked.

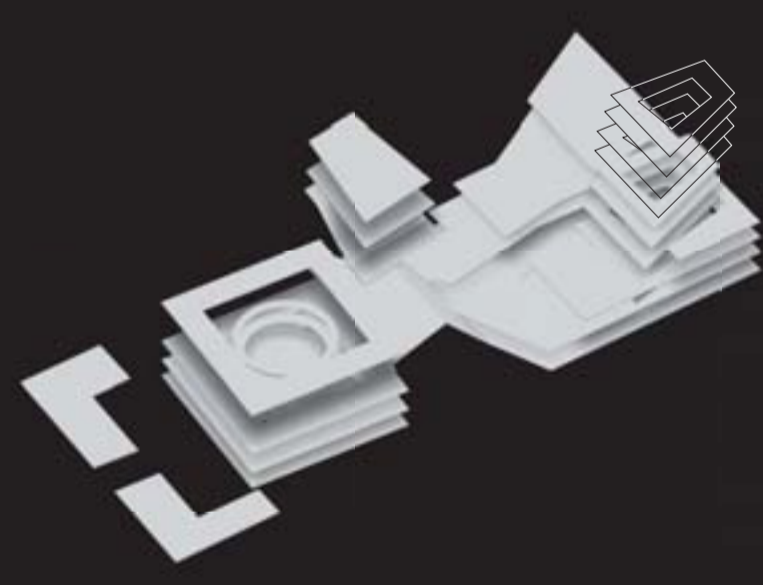
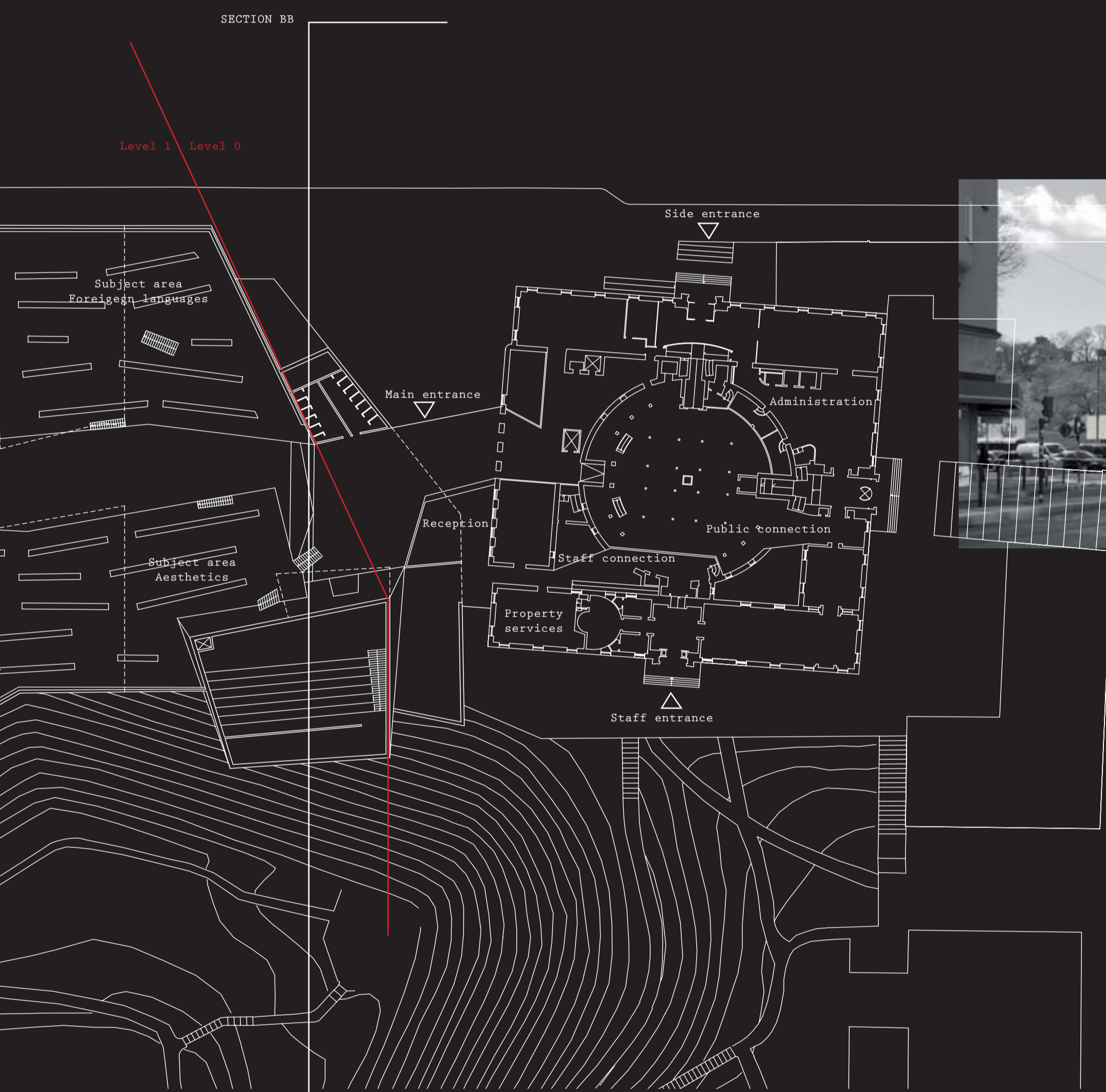
Flows The building is organized by the flows of the three main user groups - the media, the staff and the visitor flow.

Media flow The media zone and the communication belt is placed as one continuous area in the very back of the library, closest to the hill. From this zone there is direct access to the media area. The media zone connects the delivery entrance on gyldengatan, the depository zone in the basement of the asplund building and the two book drop areas by the main entrances. The communication belt is kept mainly in one level and the movement is horizontal.

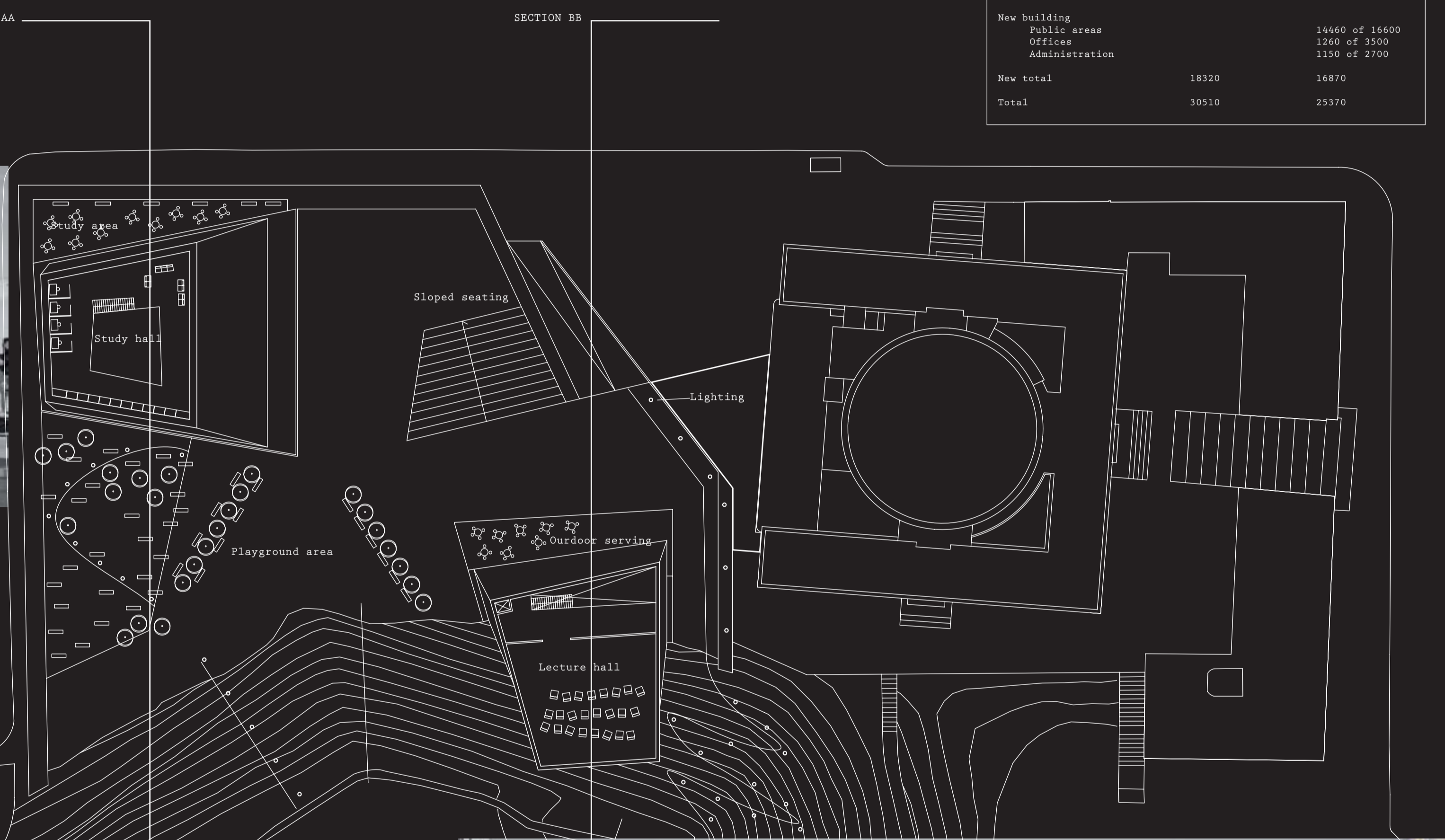
Staff flow All the administrative functions of the library are placed on the top floor of the asplund building while the visit-oriented offices are placed near the media area. In the extension they are placed along the facades towards gyldengatan and odengatan. The staff has direct access to both the communication belt, logistics area, the study hall and the media area. Using the media zone the staff can move through the library without crossing the public areas.

Visitor flow Placing the new main entrance between the existing and new building gives an optimal public flow between the two. From the existing main entrance level there is a passage to the new reception area - located on the axis of the asplund building. To further strengthen the flow between the new and existing building the central hall of the asplund building is connected to the level underneath by symmetrical staircases.

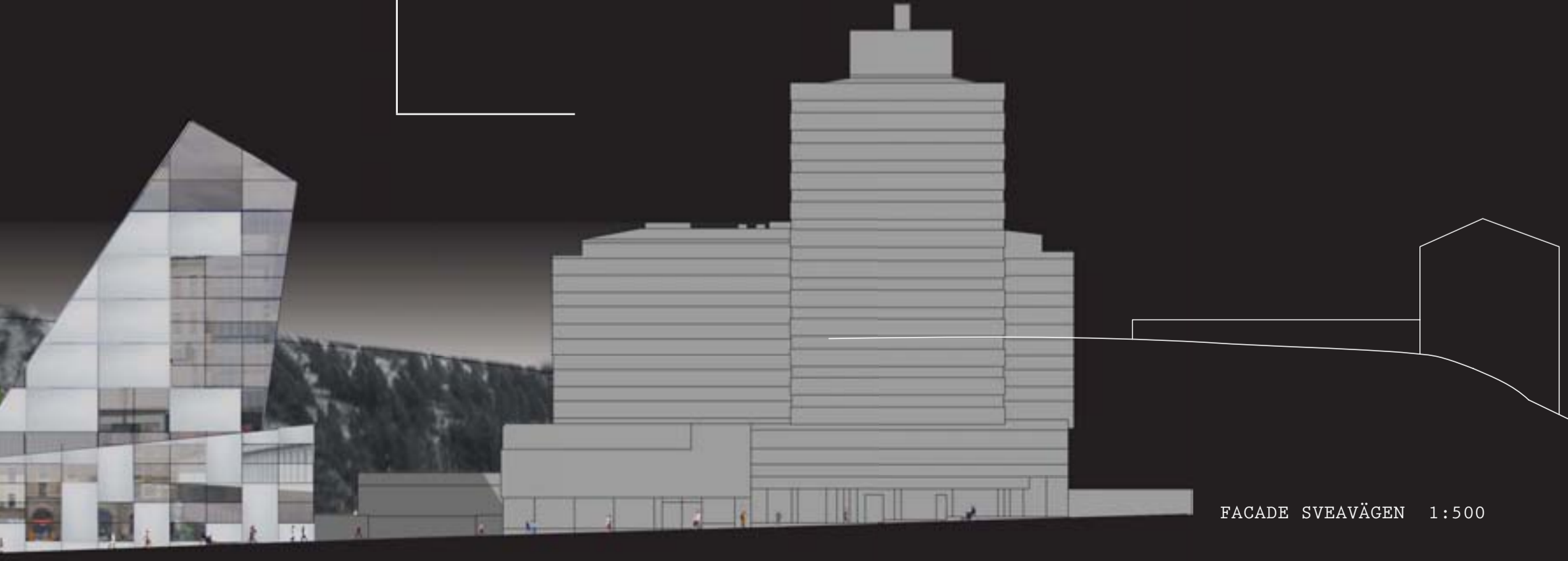
AREA	GROSS	MUA
Asplund library	10820	7500
Bazaar buildings	1370	1000
New building		
Public areas		14460 of 16600
Offices		1260 of 3500
Administration		1150 of 2700
New total	18320	16870
Total	30510	25370



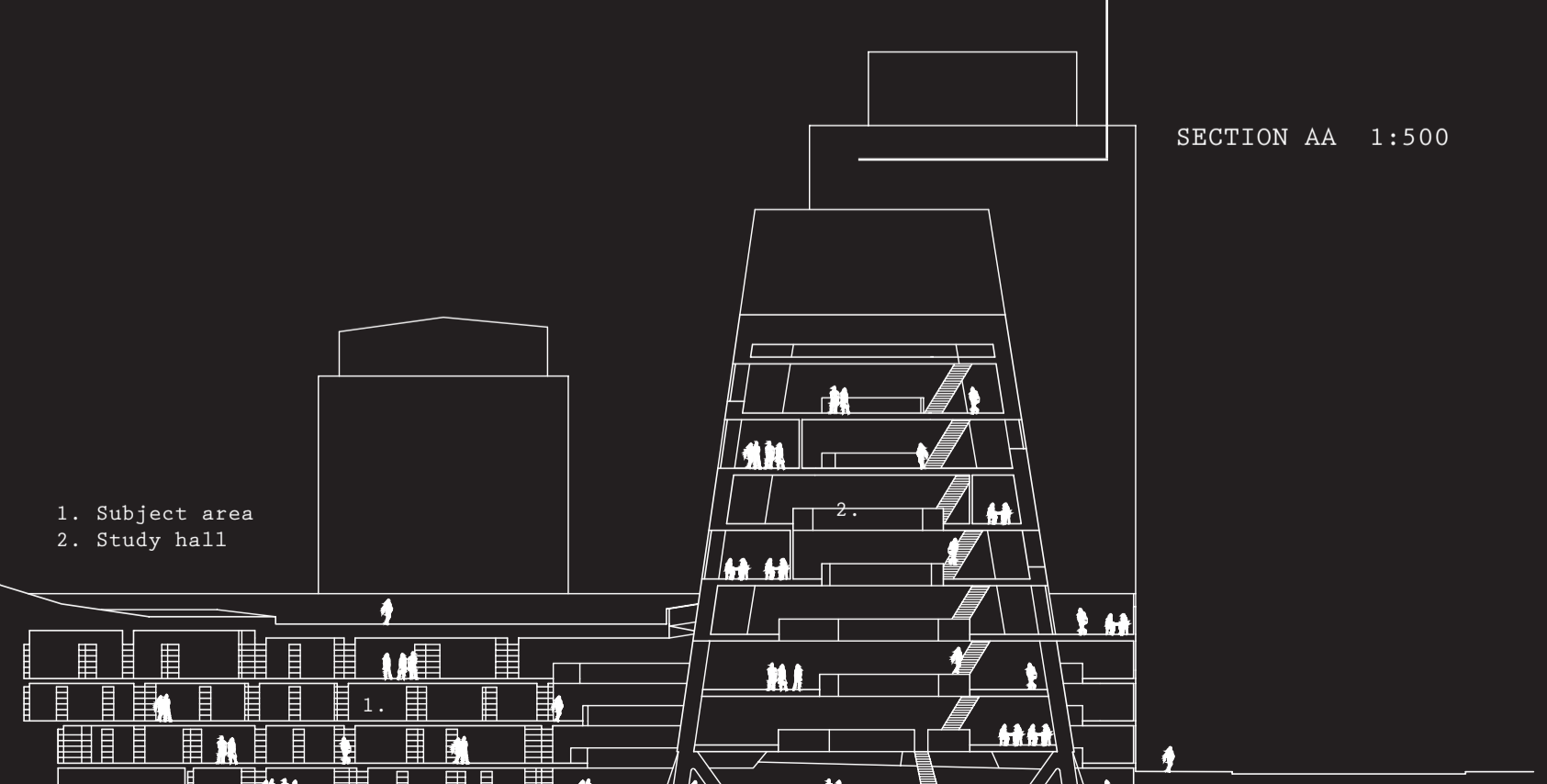
PLAN LEVEL 4 1:500



SECTION AA 1:500



FACADE SVEAVÄGEN 1:500



1. Subject area
2. Study hall

