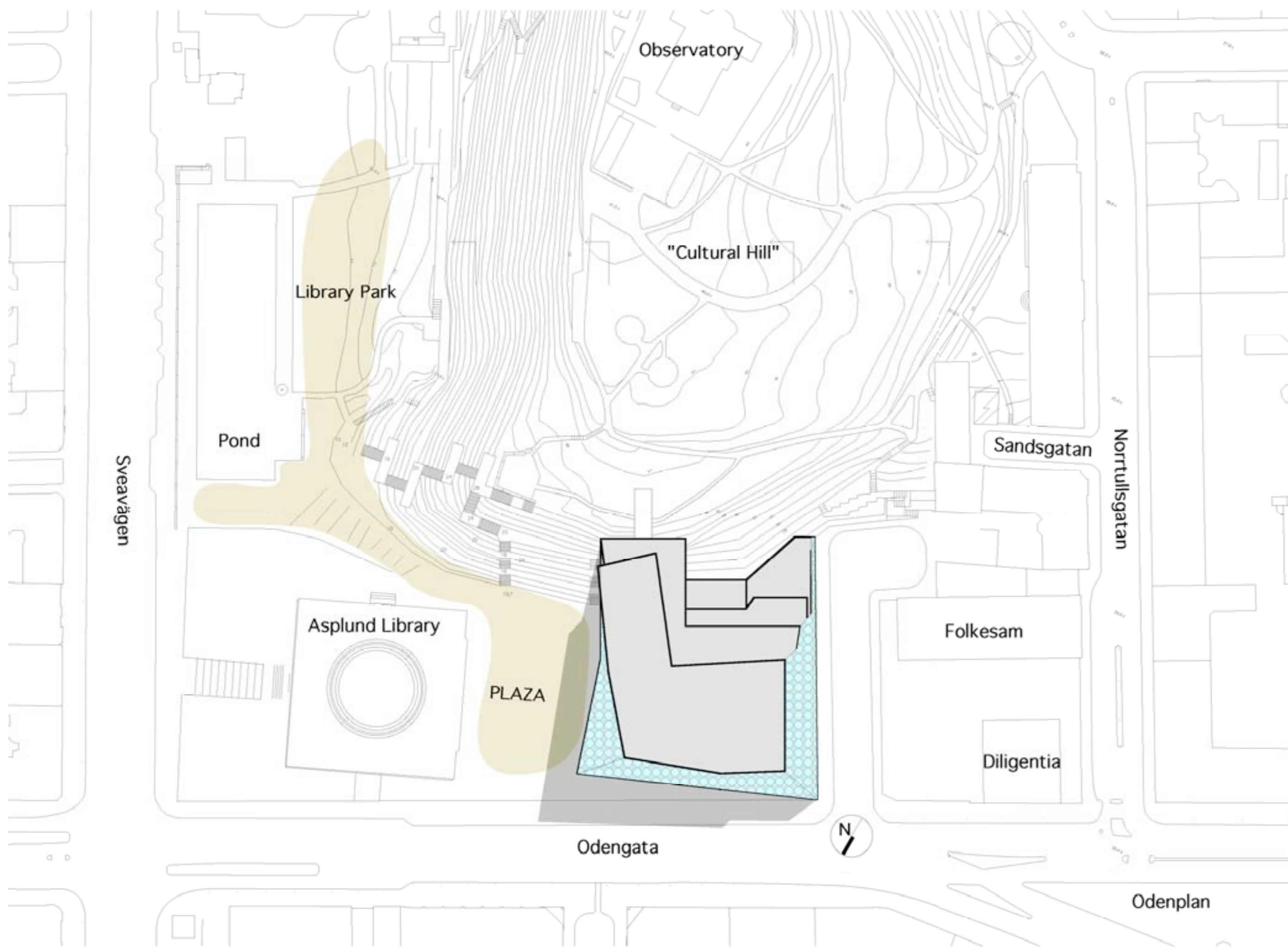




# SYNERGY

„A library is not a luxury but one of the necessities of life” - Henry Ward Beecher

/Asplund  
Architectural Competition  
The Stockholm City Library



SITE PLAN 1:1000

### Tying a hill to a city.

The Asplund library is tied to the Observatory hill through the park at the Library park. The park, the reflecting pond, the bazaar buildings, the Main Entrance and the library itself form a whole that is stronger than its individual parts. The new library should enhance this union and not counter it. Therefore an addition to the library must also be an addition to this whole.

### Cultural Connection.

As an cultural institution the Stockholm library has an excellent opportunity to be a central hub of cultural activities, both inside and outside the frame of the physical building. As is the library grounds have very low quality outdoor areas. The areas between the annexes are not used at all and the space between the Asplund library and the annexes is only used for traffic. Concentrating the building mass to the corner of Odengata and Gyldengata while staying in a respectful distance of the Asplund library will create an open space between them. A high quality outdoor space that will be inviting and bright and will spur social activities of a wide range. This plaza will play the central role in a network between the Asplund library, the hill, the new library and the Library park ensuring the consequent urban flow in the area. It will have a strong connection with the hill as an outdoor cultural space, and to emphasize this connection a set of ramps has been placed on the hill leading up to the sightseeing platform on top. These ramps will be intertwined

with stairs leading up to the hill and together they will form sitting areas, for pedestrians of the plaza and hill, areas where people can meet and relax in the sun, a vertical connection between the Observatory Hill and the urban space below.

### Respecting a building.

The placement of the new library at the corner of Odengata and Gyldengata is optimal in a programmatic and functional sense. Here the building will have a prominent placement in the city fabric, emphasizing this urban corner and creating an opposite to the Odenplan and Metrostation. The new library will be a visible landmark in Odengata and has the chance to become an eye-catcher to any who travel the Odenplan, the Metrostation and the adjacent shopping mall all while the Asplund library still stays visible, in fact this dimensioning of the new library on the building site will give the Asplund library building a grand position alone on the corner of Sveavägen and Odengata.

### Light of day.

Placing a tall building on the south side of a plaza will create a shadow related conundrum. Half the square will be shaded for the better part of the afternoon. This is why we propose that the building will recline and be formed with a sloping facade, facing the plaza, echoing the hill. This will open up the plaza creating an intimate low-speed space in the urban fabric open both towards the hill and the city.

### Respecting a hill.

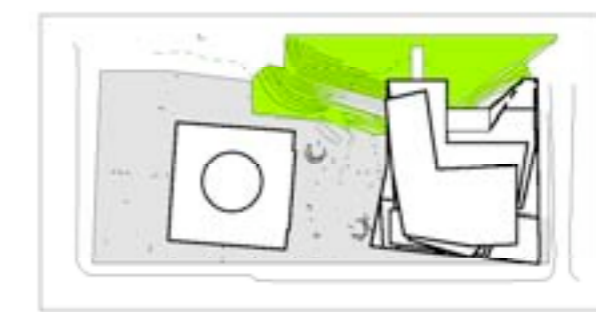
A massive building in this area must be carefully formed and orientated if not to close off the Observatory Hill. To further enhance the hill the new library buildings form will follow the natural contour lines of the Observatory Hill and thus diffuse the line between the hill and the city. Furthermore the building will lean against the hill, closing off the unusable area behind it and connecting the hill and the building. This will open up the building to numerous activities connected with the hill. This formation of the building will also allow indirect light from north and west to flow further into the building than a more traditional form would.

### Opening up the library.

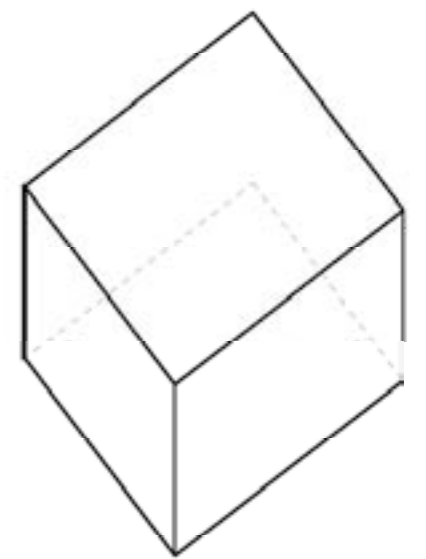
To open up the building again and open up the library towards the city we have placed a "city window" in the northwest corner. This window will allow the pedestrians in the general area of Odenplan to get a glimpse into what is going on inside the building and vice versa, a window to the world if you like. To further open up the building an atrium is placed facing the plaza diffusing the separation between the plaza and the new building establishing a horizontal flow, along with the main entrance, inside the building. From this horizontal axis going through the atrium we establish the vertical axis through the building. Lying on the side of the hill like proposed the building has a dark side facing the hill. To solve this we propose that this side will be designed to form a valley of sorts, starting low in the south corner of the building and rising up to meet the hill in the east corner of the building, giving the building a feel of growing out of the hill. To adhere to the concept of the contour lines the valley will follow them as well, forming balconies and outdoor areas on the south side of the building. These open areas allow the south light to flow into the building and work as a retreat for the weary student to stretch his legs or for the avid reader on a sunny day in June to sit outside and enjoy his reading. Thus the new library will have three major openings. One towards the City, one towards the Plaza and one towards the Hill. The main entrance of the new library will form a horizontal axis with the entrance to the plaza and the Asplund library. The main entrance will be placed in the double height "city window" that opens the building up towards the city, echoing the vertical axis that is formed in the library atrium facing the plaza. The vertical axis will be placed centrally in the building, facilitating the flow of both people and books to various layers in the new library.

### Sizes

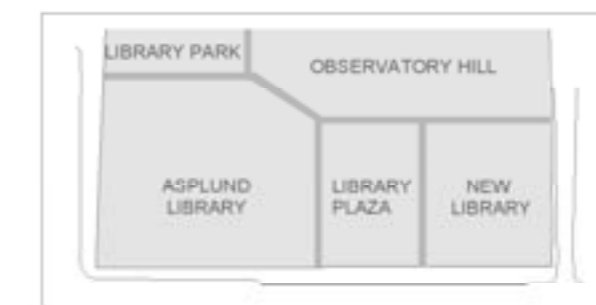
The proposal suggests to use the 7500 sqm. MUA of the Asplund Library and none of the annexes. The new library is therefore approx. 16500 sqm. MUA. This will make the total gross area 29000 sqm.



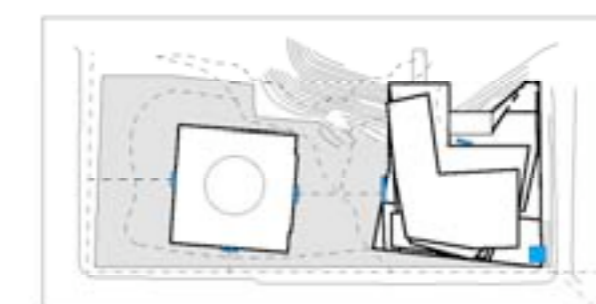
CONNECTING URBAN WITH GREEN



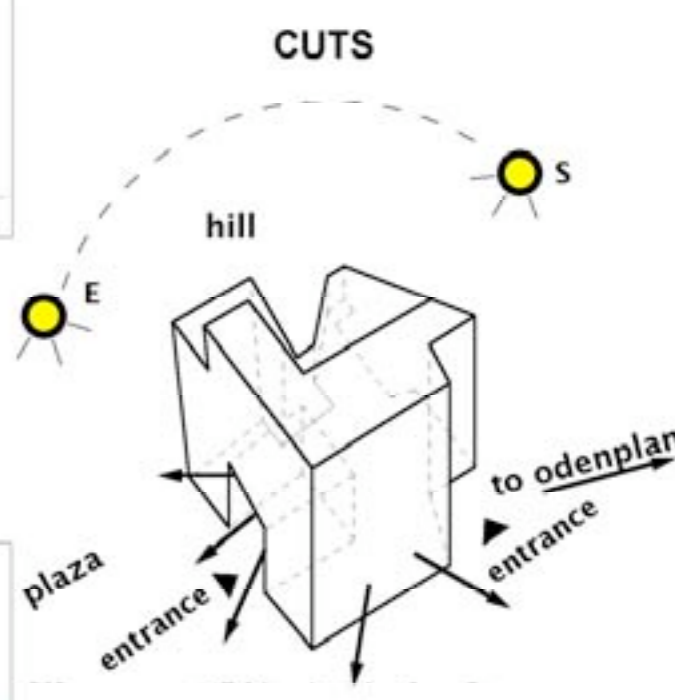
BUILDING BLOCK



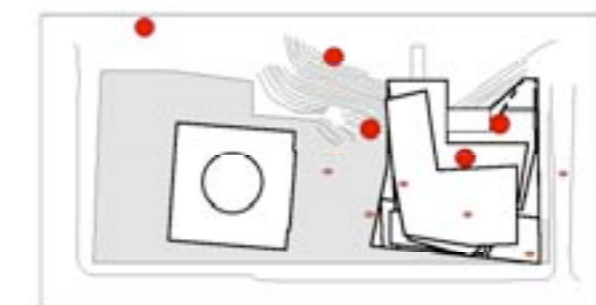
STRUCTURE



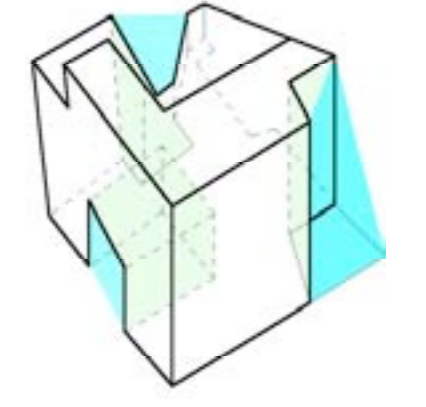
INNER PATHS AND PLAZA/PARK/HILL NETWORK



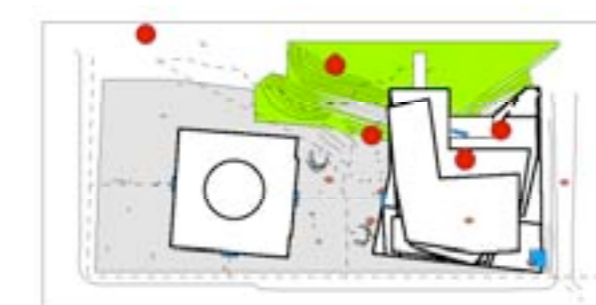
PARAMETERS



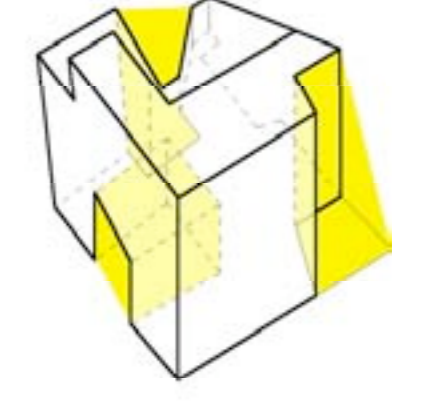
SPECIAL FEATURES



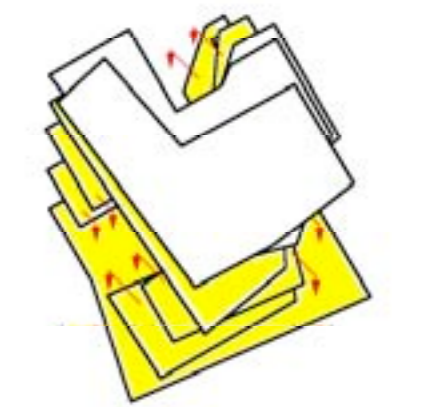
ORIENTATION



INTERACTION OF THE ELEMENTS



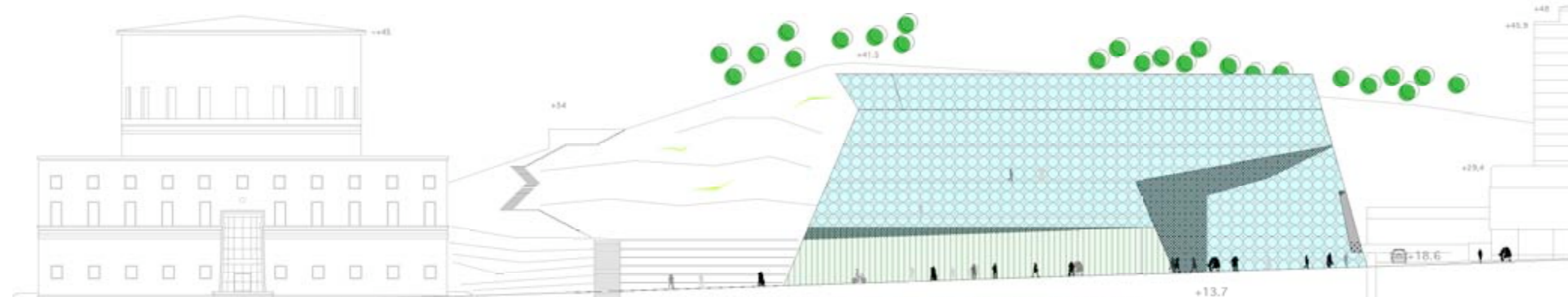
NATURAL LIGHT



BUILDING STRUCTURE



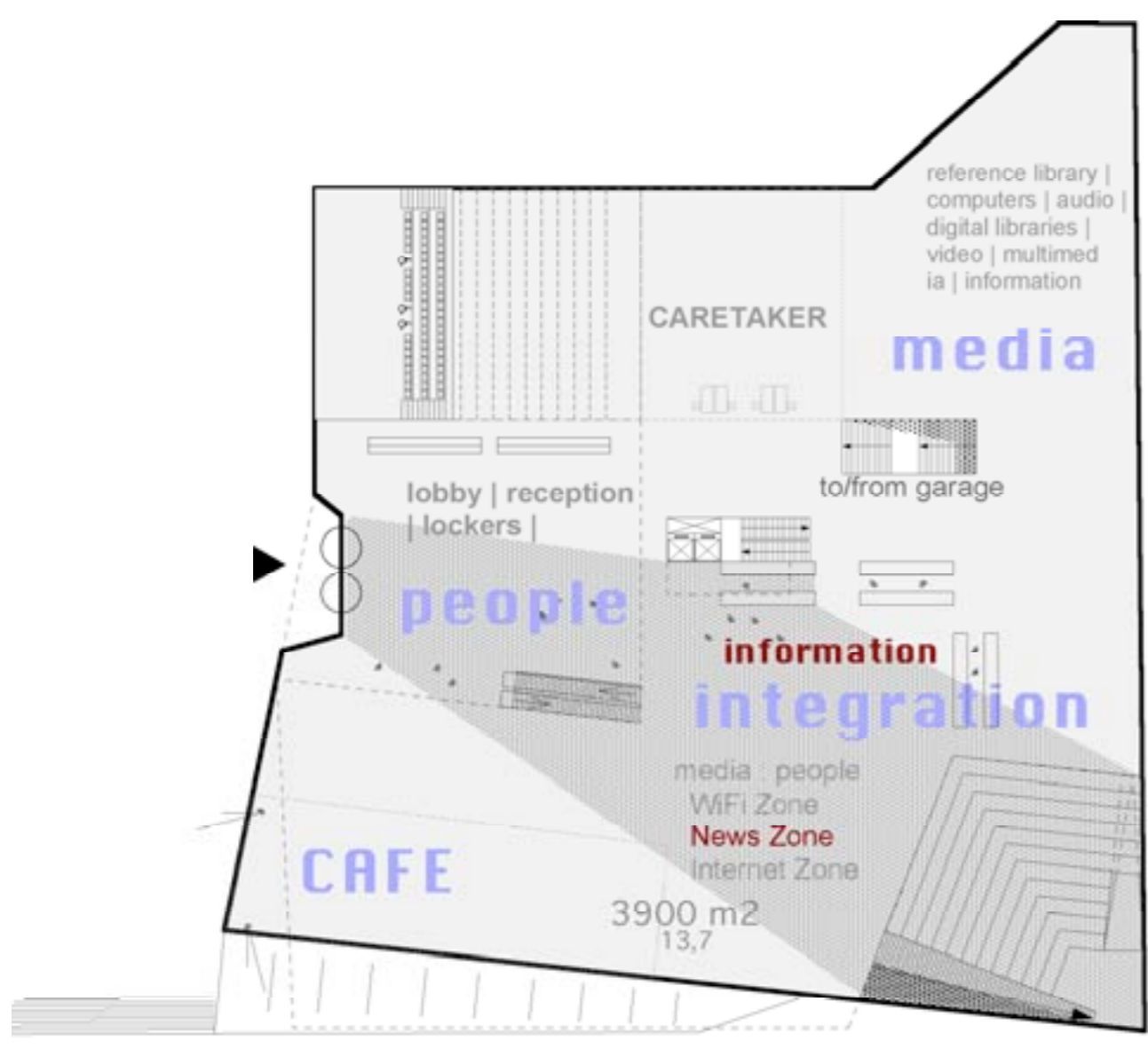
NIGHT BIRDBVIEW



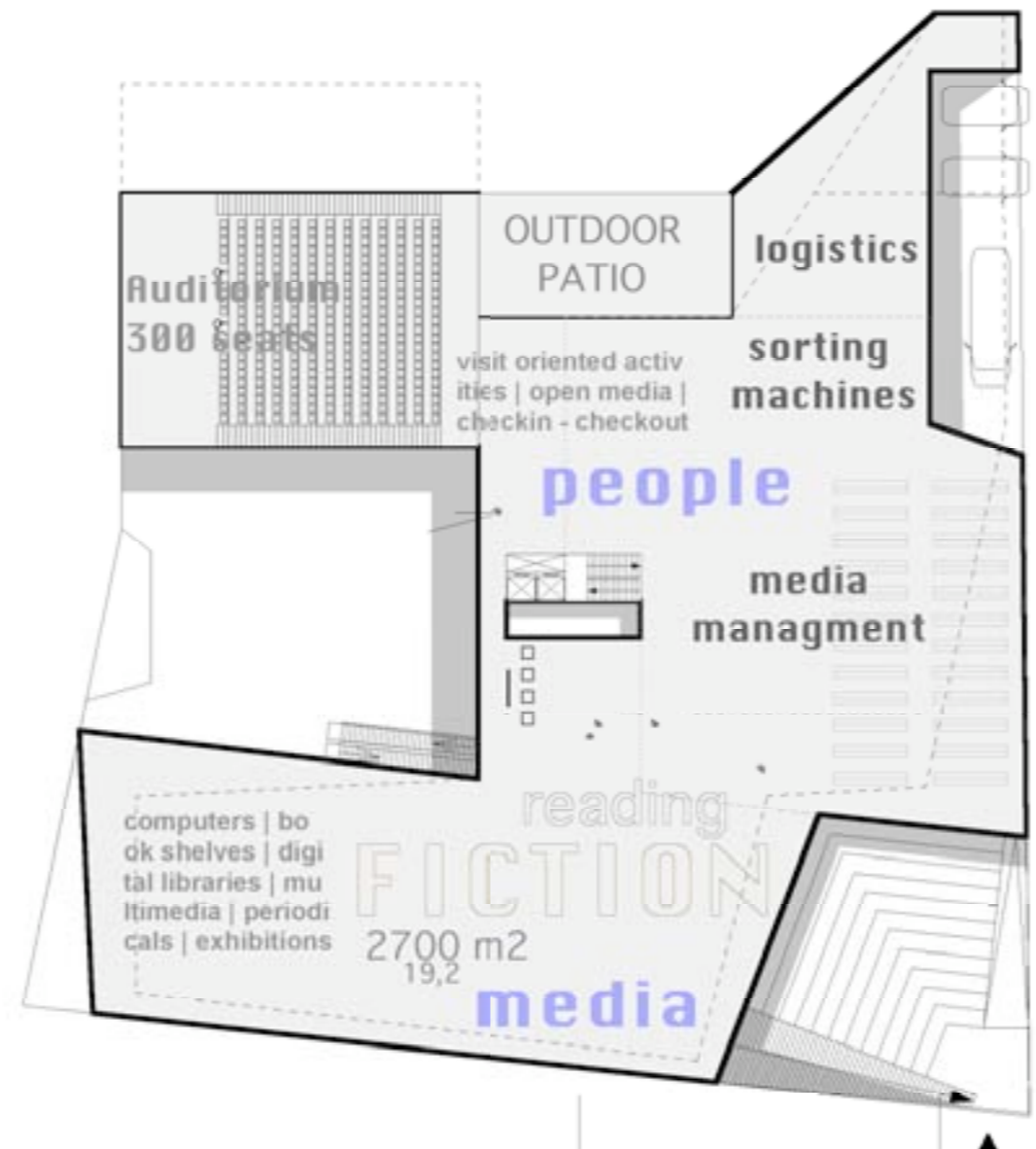
ELEVATION ODENGATA 1:500

63699

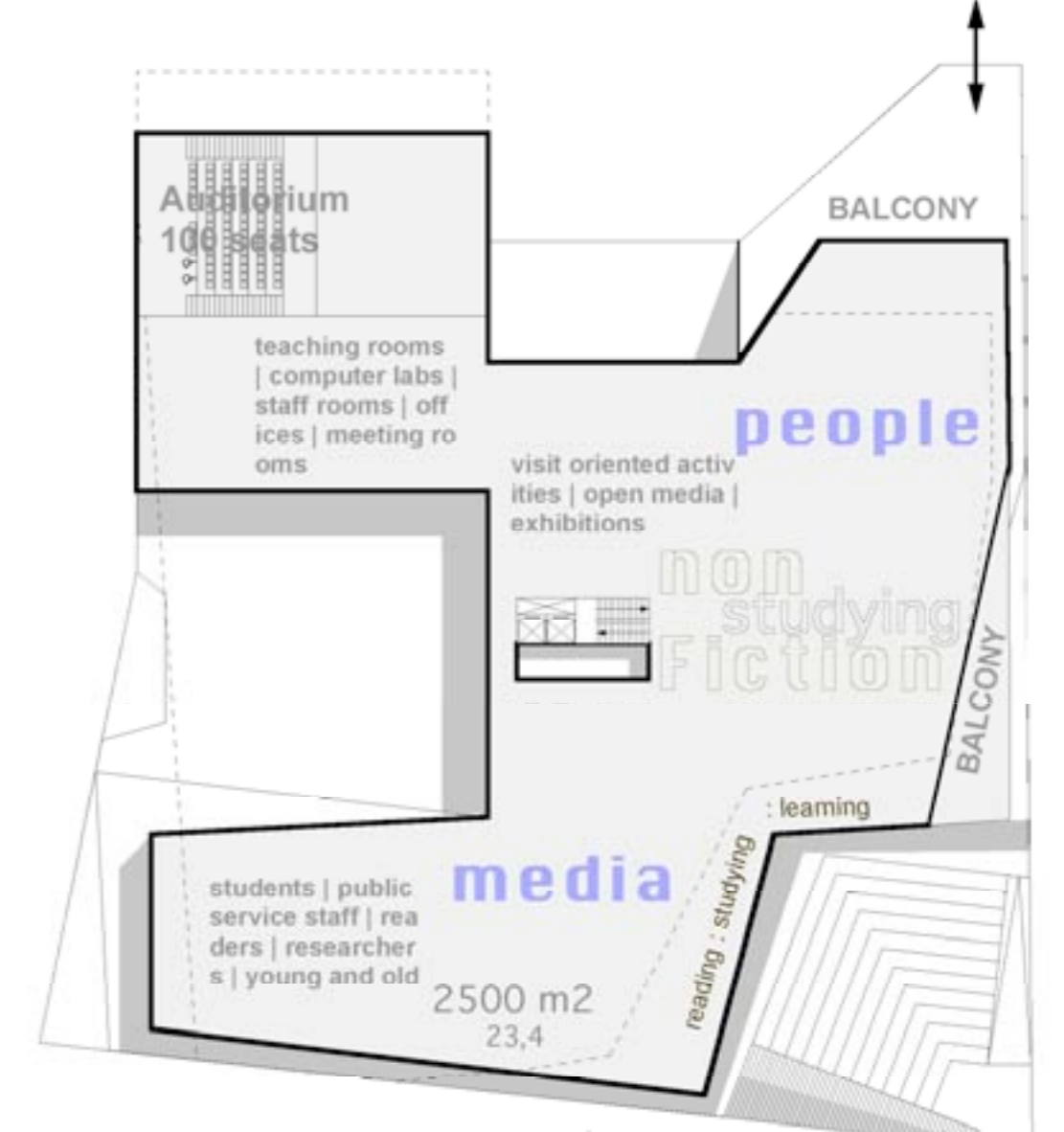
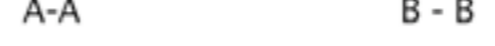




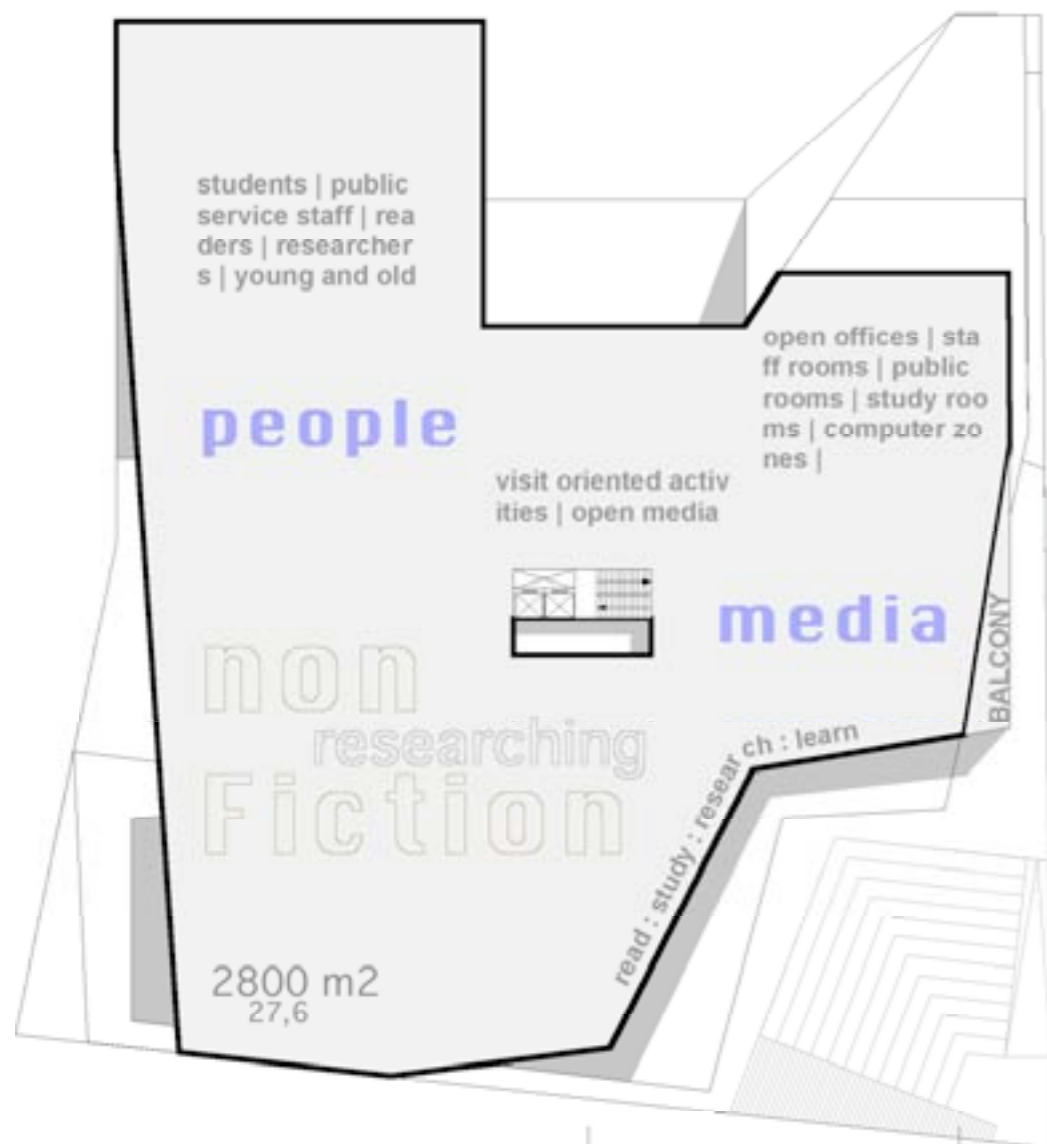
1st. FLOOR



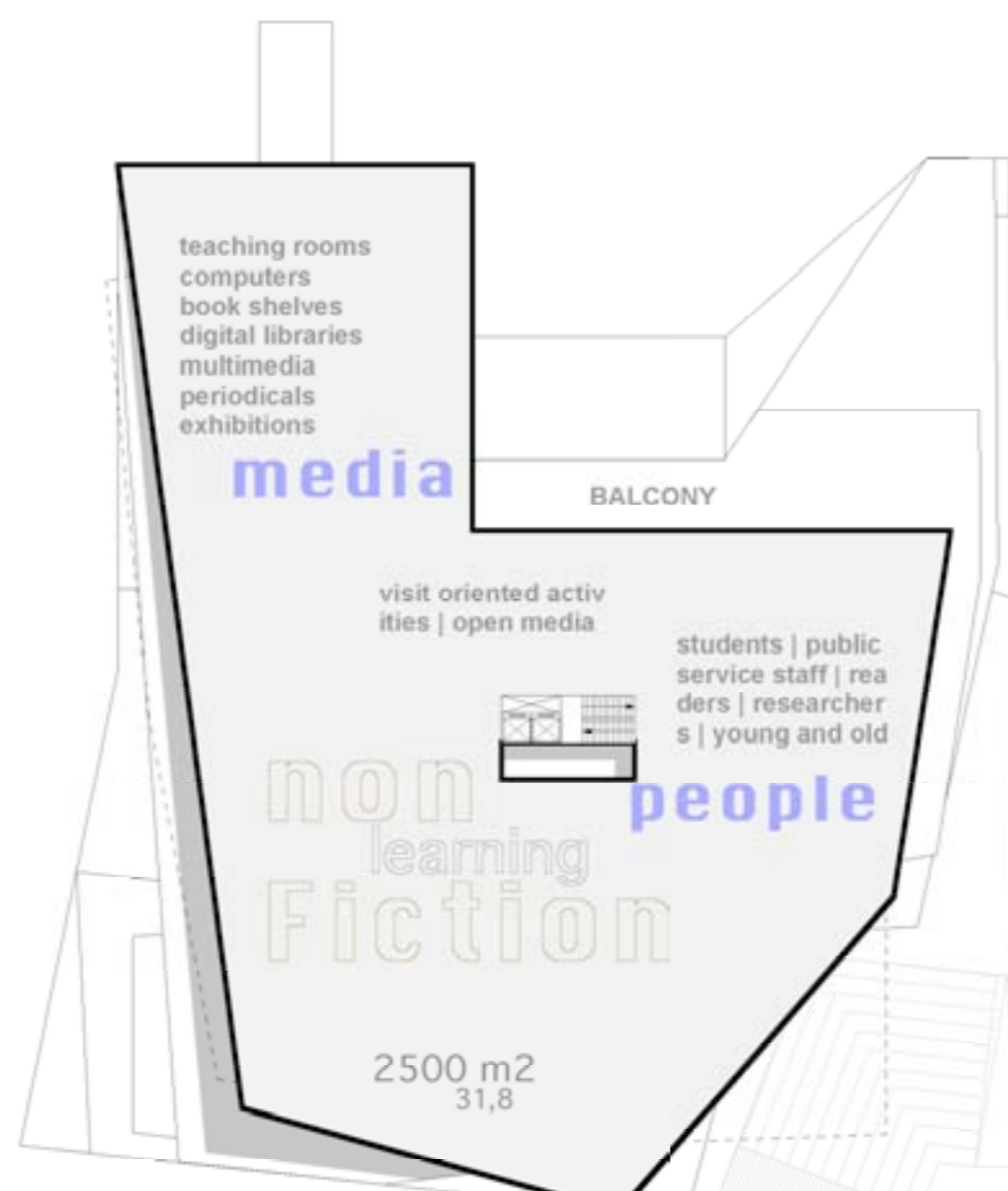
2nd. FLOOR



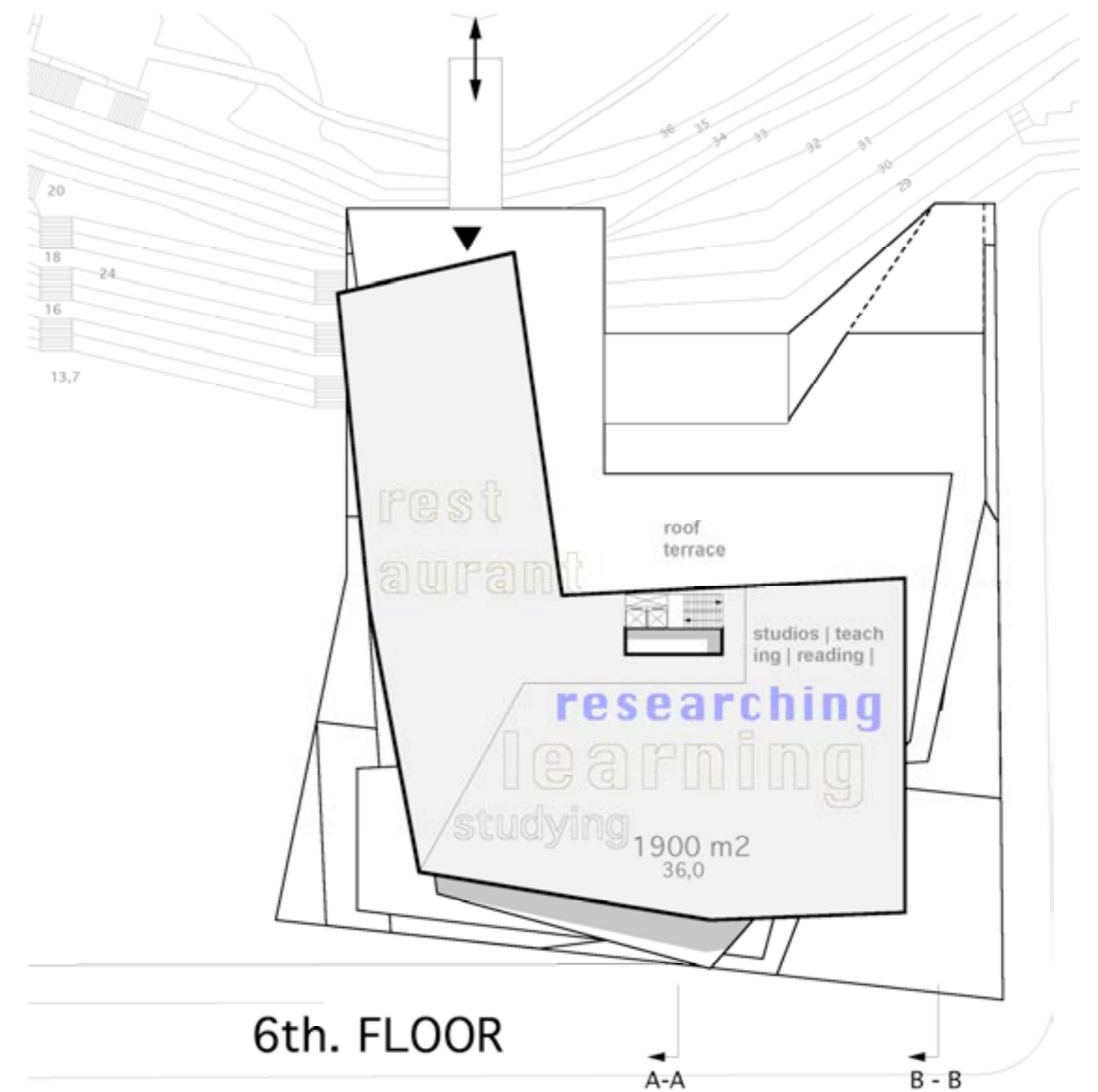
3rd. FLOOR



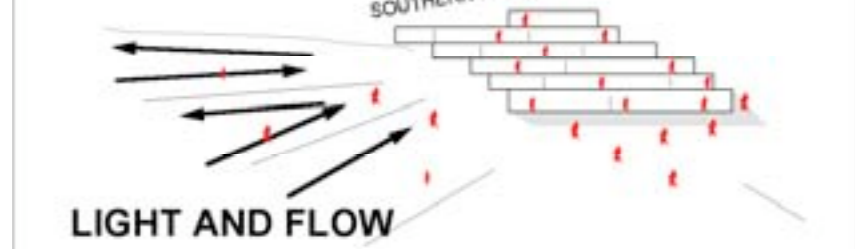
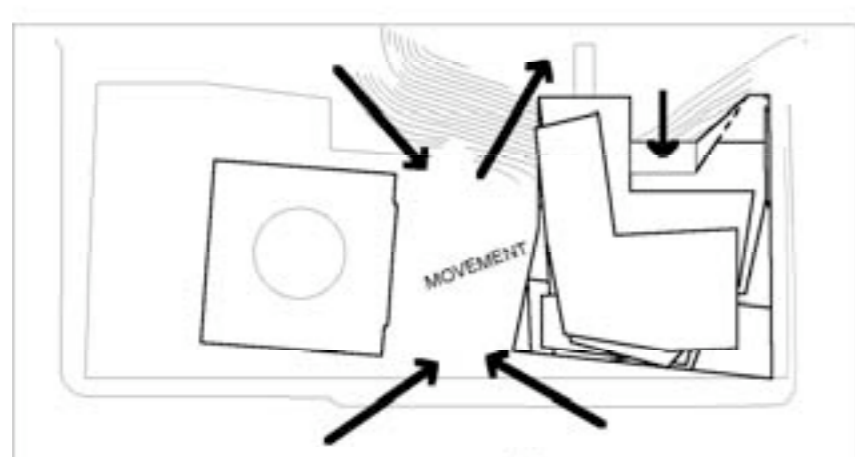
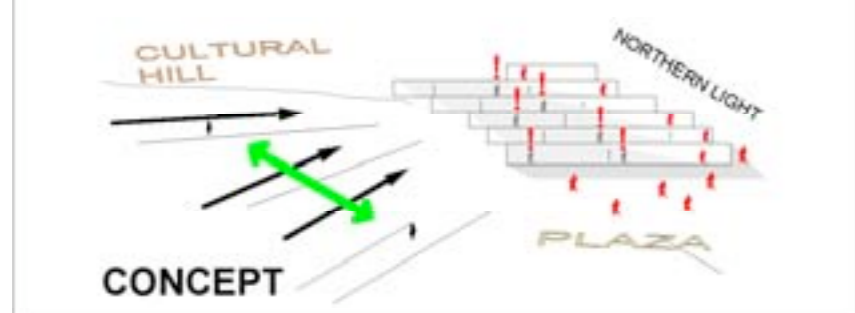
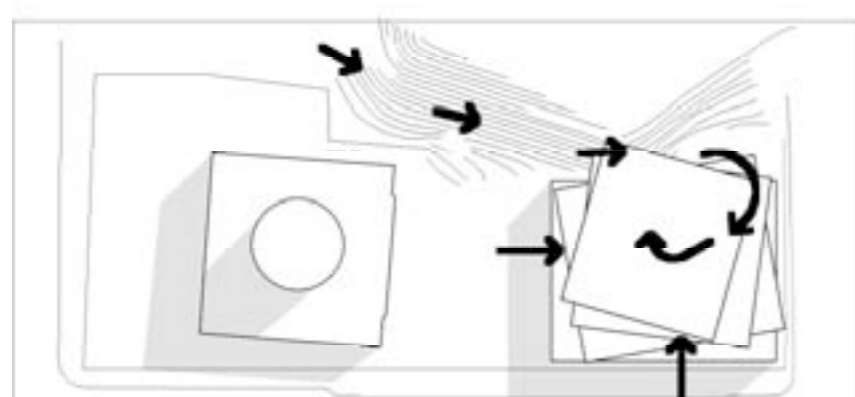
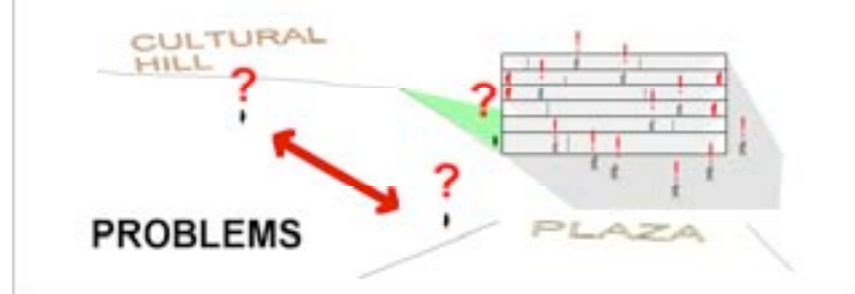
4th. FLOOR



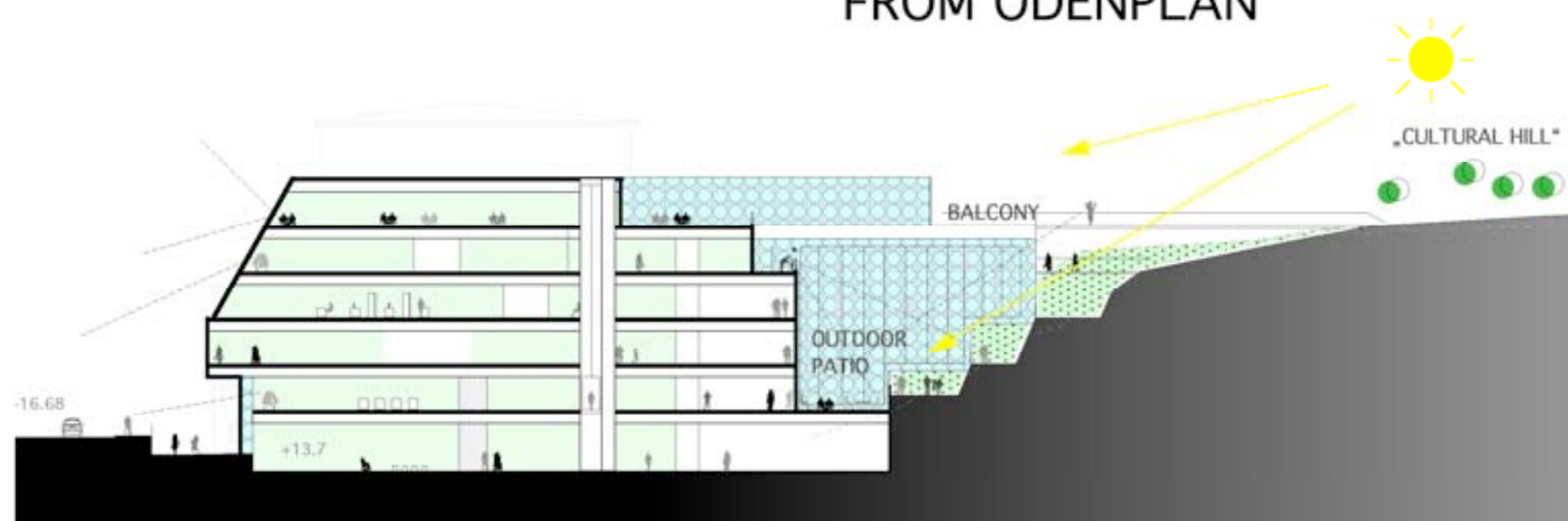
5th. FLOOR



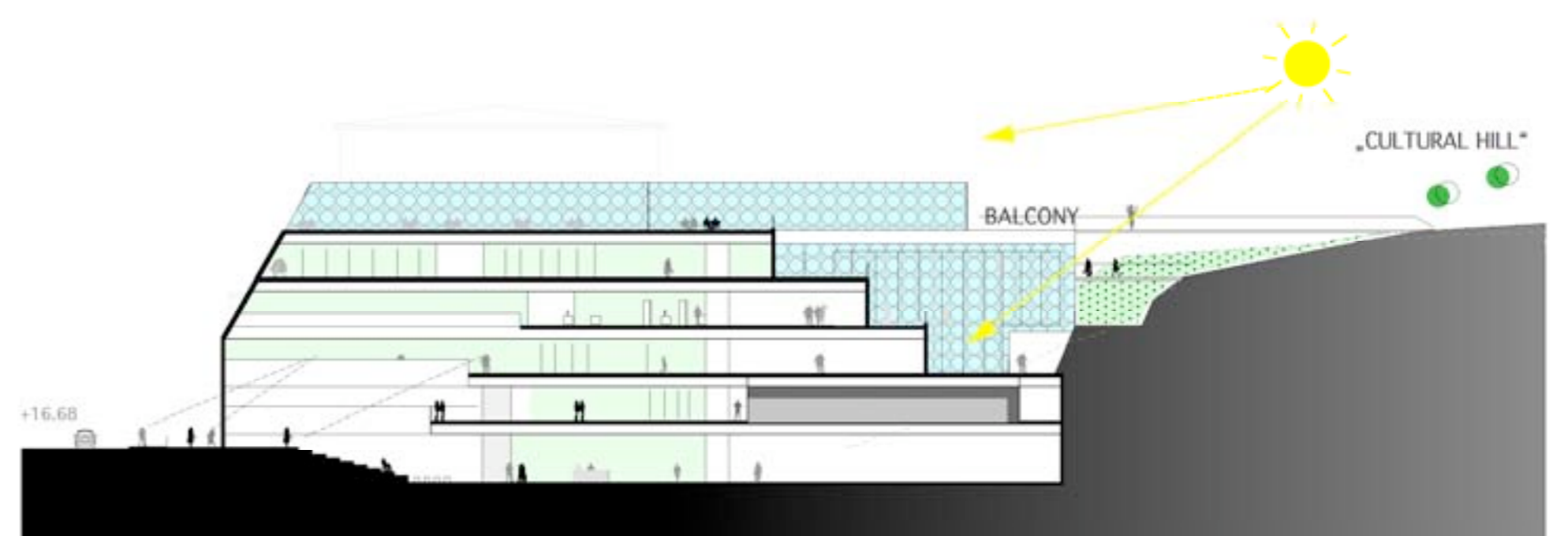
6th. FLOOR



FROM ODENPLAN



SECTION A - A 1:500



SECTION B - B

