

THE STOCKHOLM CITY LIBRARY

The library is inscribed in the university college district as a collection of buildings in itself. The new building is an elevated vertical compound, located between Asplund's "temple of books" and annexes 2 and 3, providing a large public indoor square, open to Odengatan and Observatory Hill: the new hall as an open meeting place. From the upper floors and the open-air reading room on the terrace, the view extends over the city to the sea.

The new library building is an exchanger with an abstract and open public image, as a screen responding to Asplund's monument.

This new vertical compound is a compact collection of useful areas allowing various combinations. At this stage of the competition, the project provides an abstract frame, a potential capacity of areas and connections to be developed in further studies.

Opposite to XXth century large libraries, introverted social places, protected from their environment, the new library building protects the books in its core and offers reading rooms or personal working stations, largely open to the city.

The compact design of the building may allow the preservation of two annexes: it favors the exchanges between the different departments and services, both for the users and the staff. This compactity gives basis for convenient energy and maintenance solutions (especially for the sorting machine). The dimensions of the building have been settled to provide a sufficient area for the largest department on one single level.

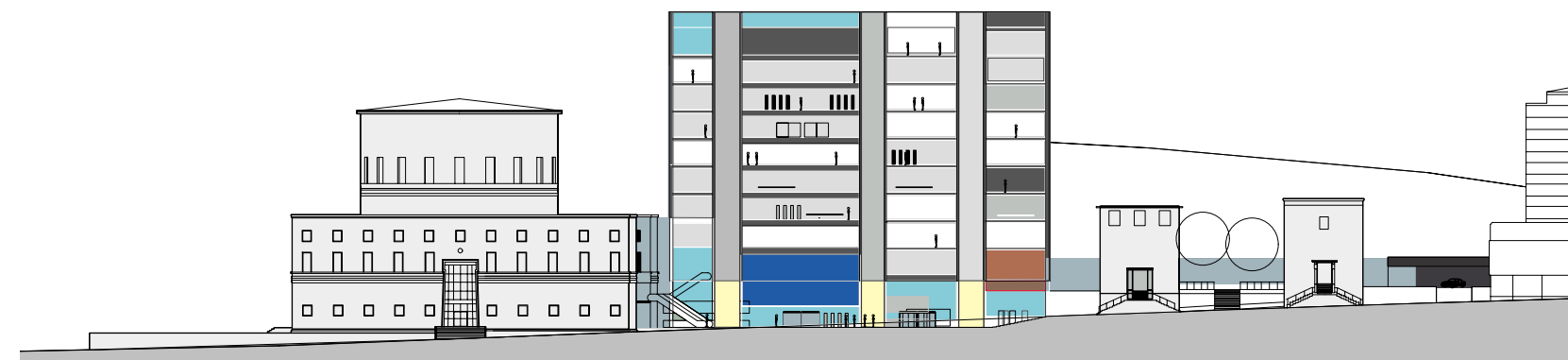
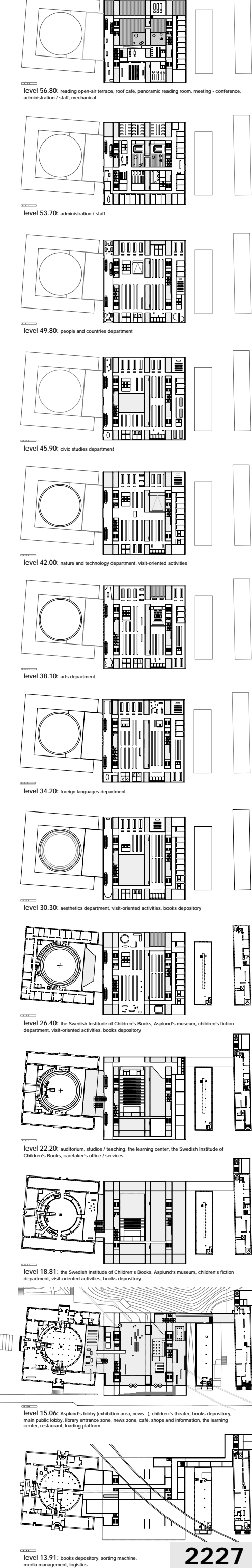
This project is an open design structure that can be developed in a wide range of directions according to the many dimensions of Stockholm City Library.



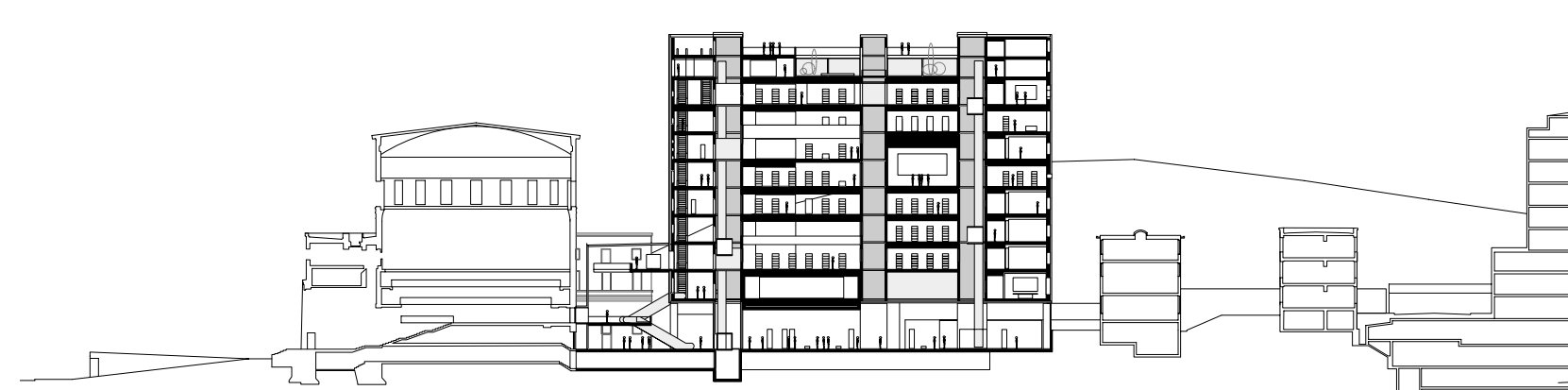
Areas information

Street level (Odengatan)	secondary lobby (exhibition area, news...)		
New library	books depository	0 000 m ²	
	children's theater	150 m ²	
	main public lobby	150 m ²	
	open public zone	150 m ²	
	shops and information	120 m ²	
Annex 1	the learning center	60 m ²	
Annex 2	restaurant	130 m ²	
New service building	loading platform	130 m ²	
Underground level	books depository		
Asplund building	sorting machine	160 m ²	
New library	media management	360 m ²	
Annex 1	the learning center	60 m ²	
Annex 2	the Swedish Institute of Children's Books	60 m ²	
New service building	property services / logistics	270 m ²	
Level 1 (15.8-16.1)	Fiction department	1 500 m ²	
Level 2 (16.2-16.5)	the learning center	60 m ²	
Level 3 (16.6-16.9)	the Swedish Institute of Children's Books	60 m ²	
Level 4 (17.0-17.3)	auditorium	200 m ²	
Level 5 (17.4-17.7)	studio / teaching	250 m ²	
Level 6 (17.8-18.1)	the Swedish Institute of Children's Books	60 m ²	
Level 7 (18.2-18.5)	curator's office / services	60 m ²	

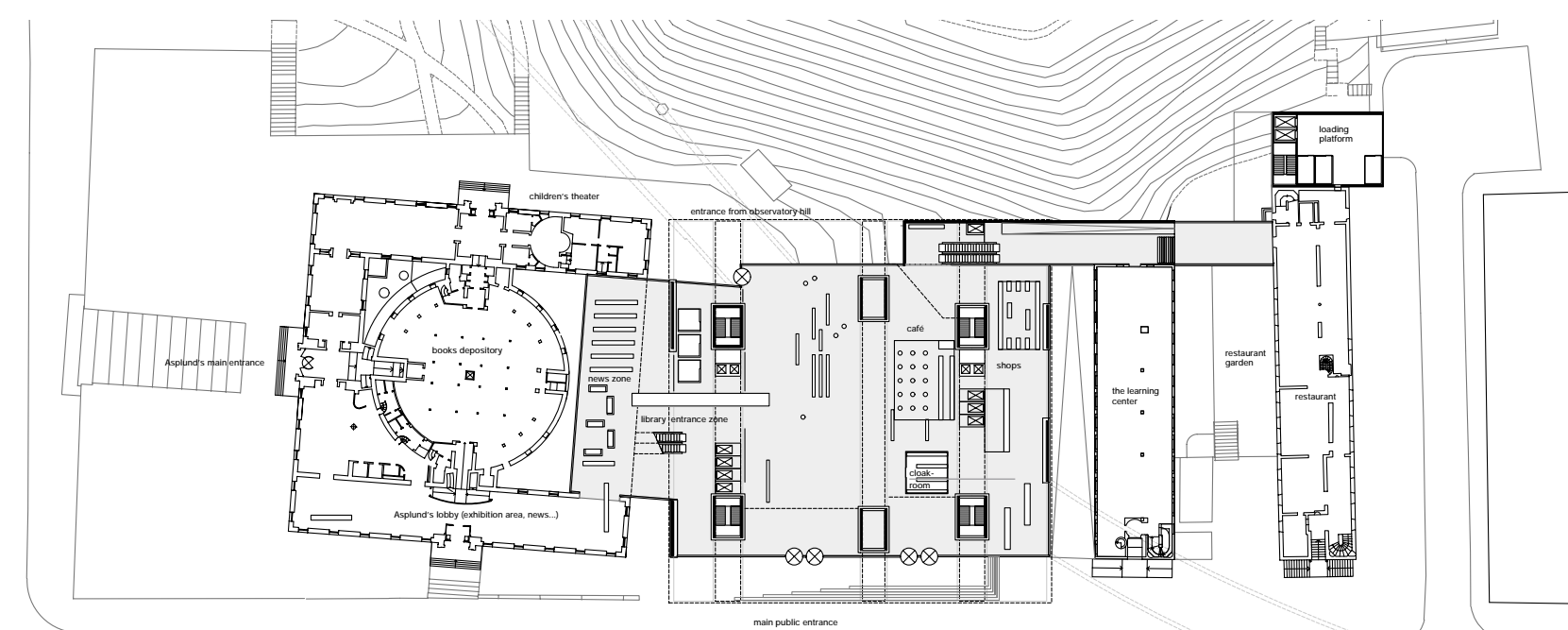
Level 3 (18.6-18.9)	the Swedish Institute of Children's Books		
Asplund building	Asplund's museum	910 m ²	
New library	children's fiction department	140 m ²	
	visit-oriented activities	200 m ²	
	books depository	230 m ²	
Level 4 (19.0-19.3)	aesthetics department	220 m ²	
New library	visit-oriented activities	200 m ²	
	books depository	230 m ²	
Level 5 (19.4-19.7)	foreign languages department	1 920 m ²	
New library			
Level 6 (19.8-20.1)	arts department	1 870 m ²	
New library			
Level 7 (20.2-20.5)	nature and technology department	1 400 m ²	
New library	visit-oriented activities	200 m ²	
	books depository	230 m ²	
Level 8 (20.6-20.9)	classic studies department	1 710 m ²	
New library			
Level 9 (21.0-21.3)	people and countries department	1 890 m ²	
New library			
Level 10 (21.4-21.7)	administration / staff	1 240 m ²	
New library			
Level 11 (21.8-22.1)	reading special terrace	320 m ²	
New library	roof cafe	100 m ²	
	panoramic reading room	180 m ²	
	meeting / conference	270 m ²	
	mechanical	370 m ²	
New library	total area (including main lobby)	21 610	
	maximum gross area from level 1 to 11	23 200	



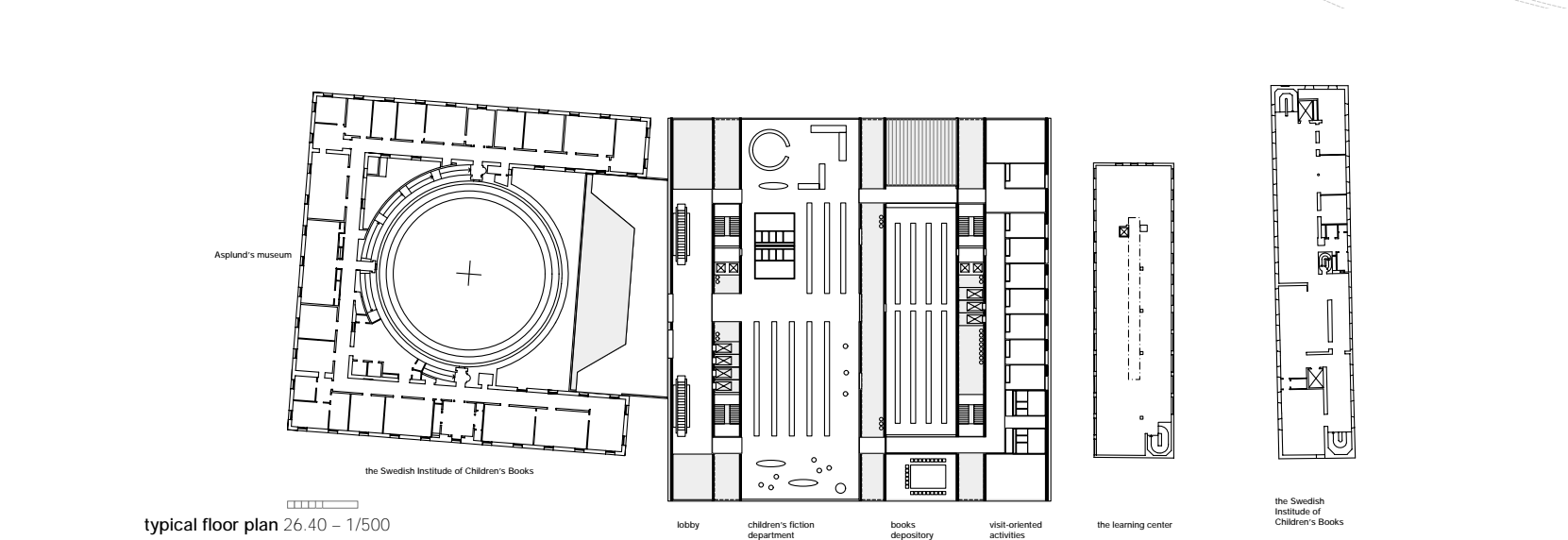
elevation on Odengatan 1/500



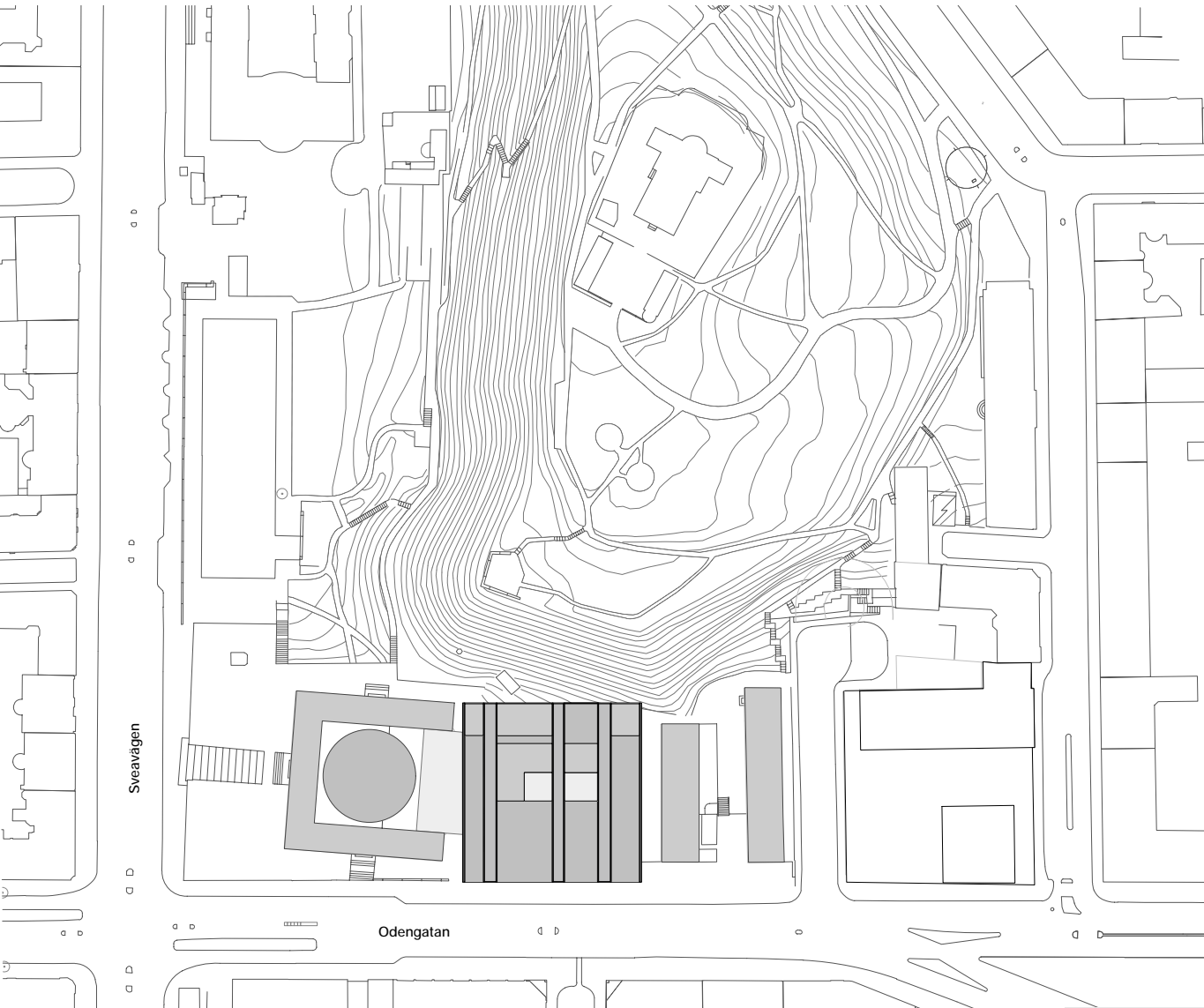
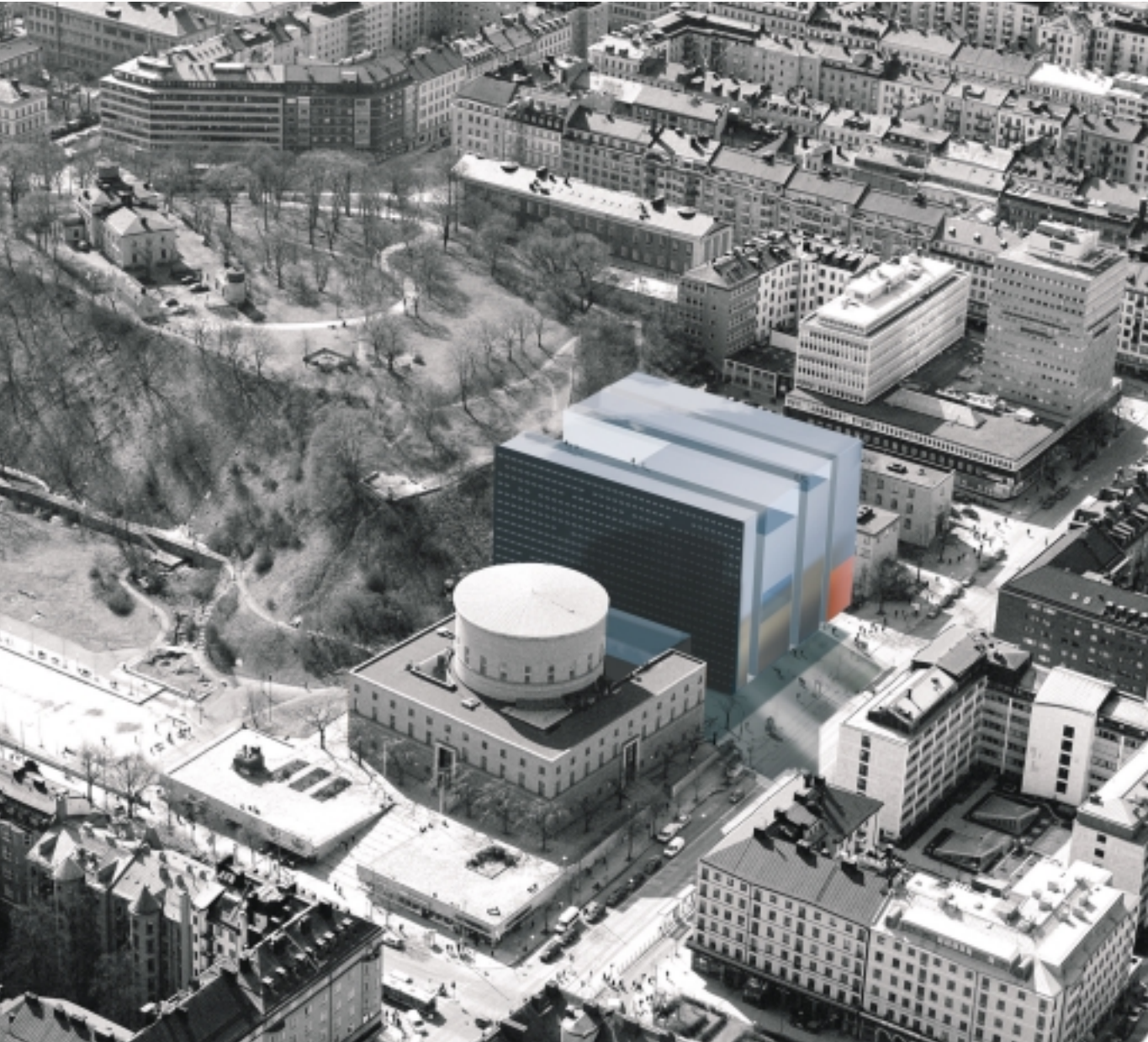
section 1/500



plan of street level 15.06 - 1/500



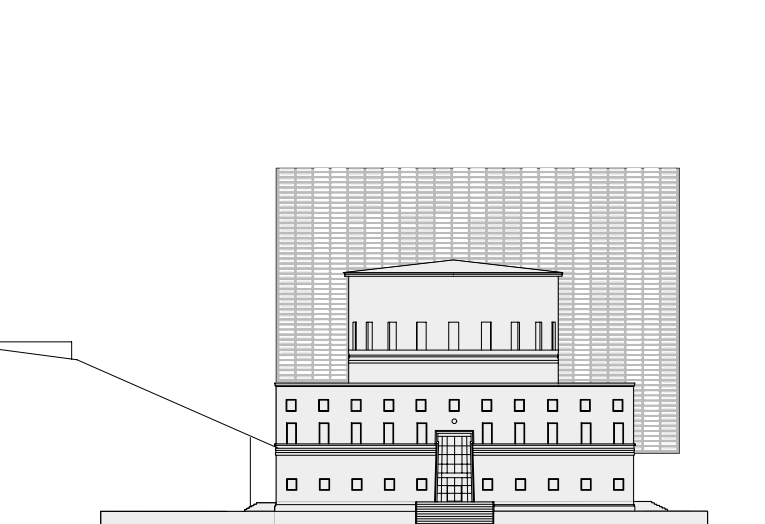
typical floor plan 26.40 - 1/500



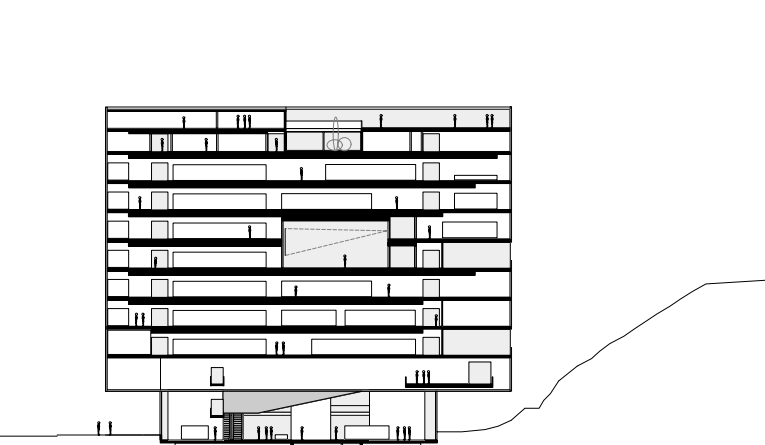
site plan 1/1000



new entrance of the library: indoor public square opening toward observatory hill



elevation on Sveavägen 1/500



section 1/500