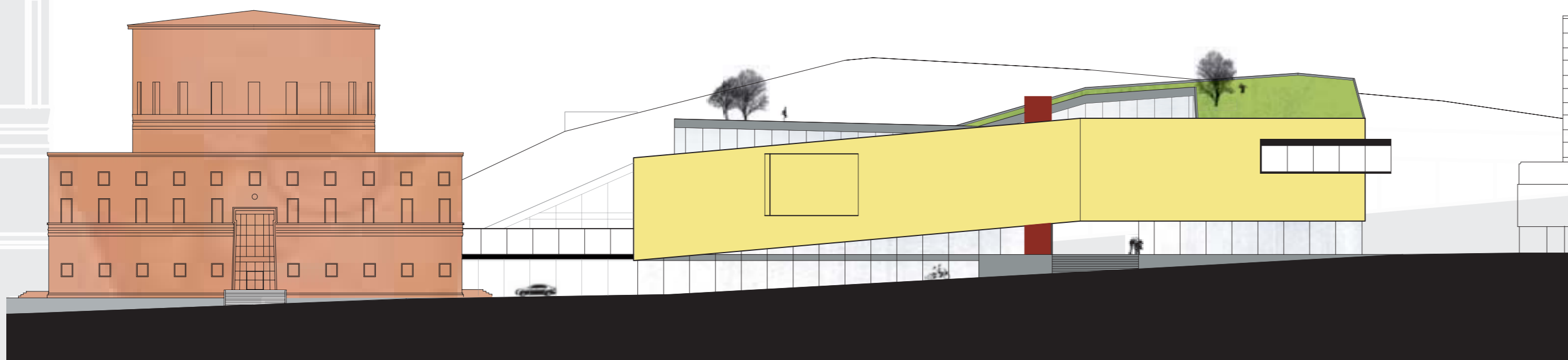
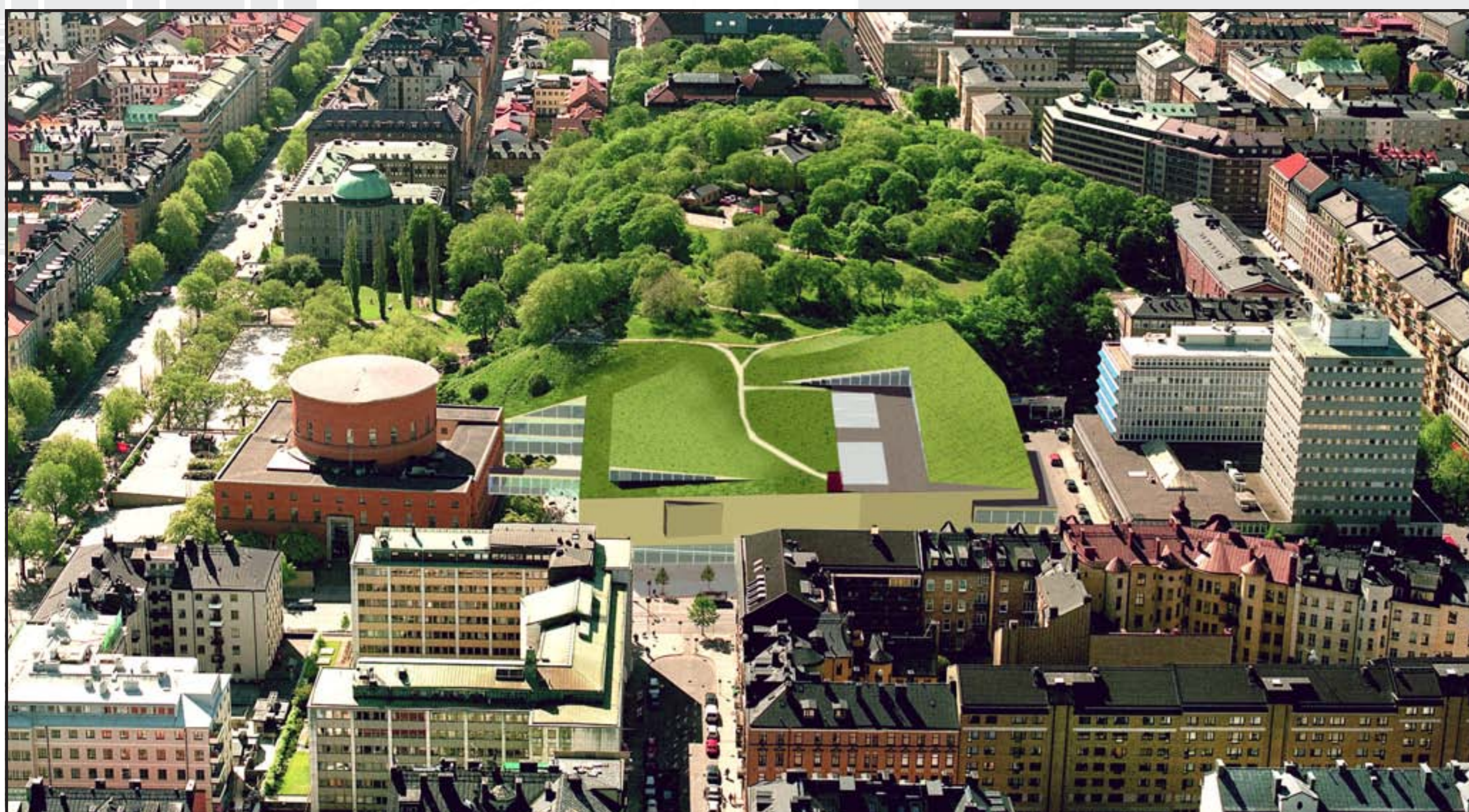


# A CLOUD IN PANTS



FACADE TOWARDS ODENGATAN 1:500



SITEPLAN AND LEVEL 5 1:1000



FACADE TOWARDS SVEAVÄGEN 1:500

We propose an extension that becomes the counterpart to Asplunds library. Instead of getting its monumentality by raising above the spectator it reverses the situation by putting the spectator on top. Instead of being a freestanding symmetric villa, it is a variative landscape formed by its context. These two buildings act together with increased strenght by creating a unity, both supportng each other.

Positioned beside Asplund's library and underneath the Observatory Hill, the new building turns the forgotten backside of Asplunds library into an inside court facade and extends its main axis along the way to the entrance hall. The Observatory Hill park is brought out almost all the way to Odenplan, where the building forms a new countenance towards the city. By its entrance the three layers of - city, library and park - are tied together. This is illustrated by a piercing red elevator and a new axis through the library from Odengatan all the way up to the park.

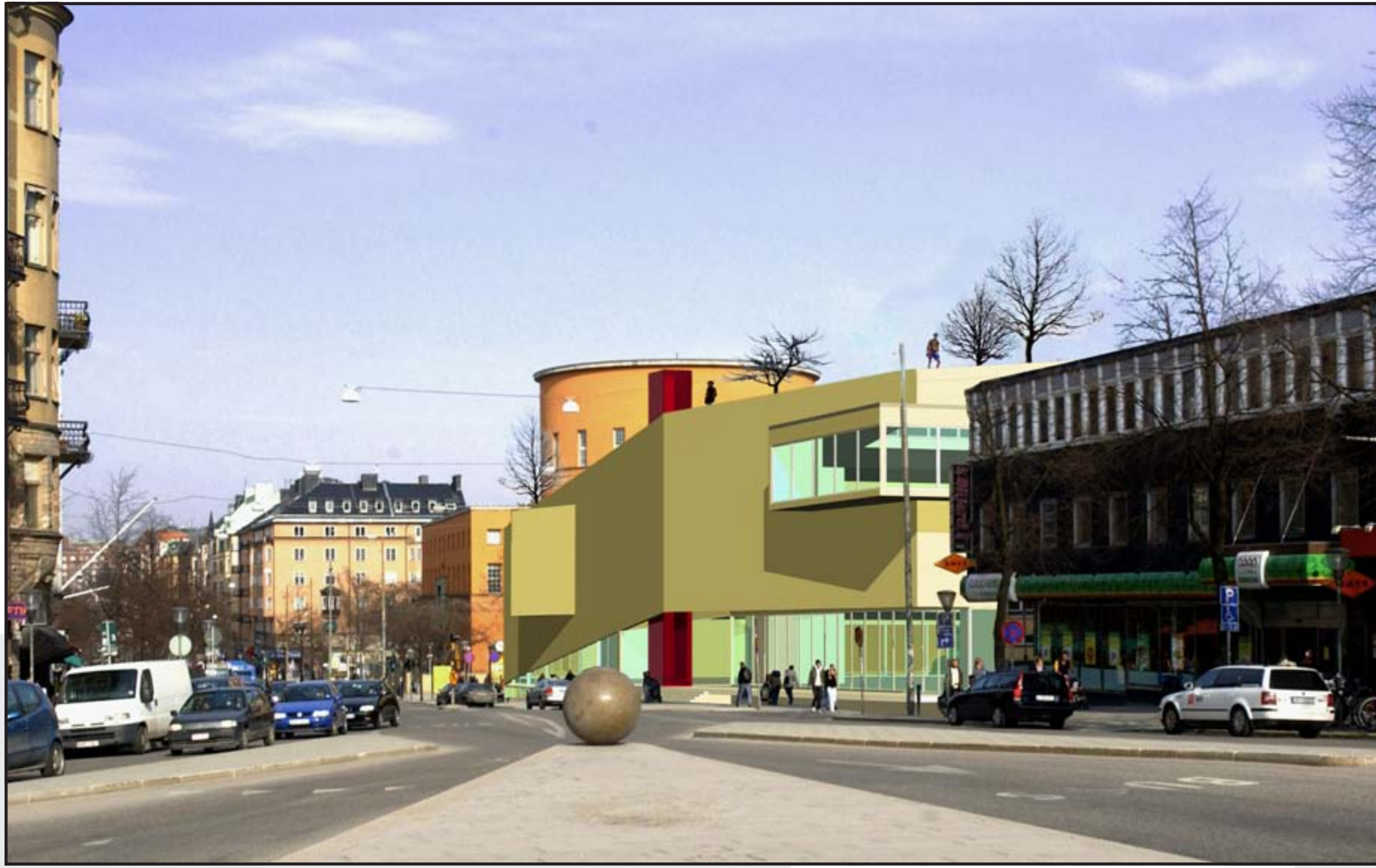
The extended Stockholm Public Library will stand as a symbol for the modern city of knowledge and be a new central meeting point for all its inhabitants. It will provide new activities and functions to take a role as learning centre and navigator in the new flow of information. The extension will act respectfully to Asplunds 1930's masterpiece and create a unity that expresses the same original idea of democracy and access to knowledge in the multi-cultural society of today and tomorrow.

## DESIGN

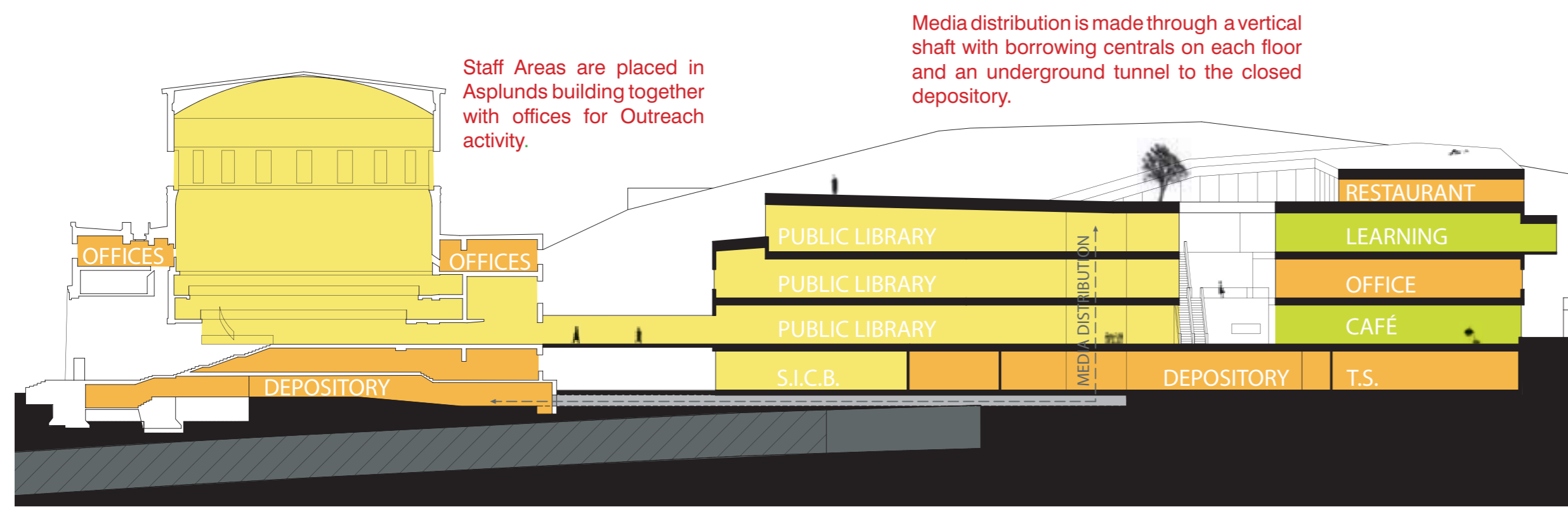
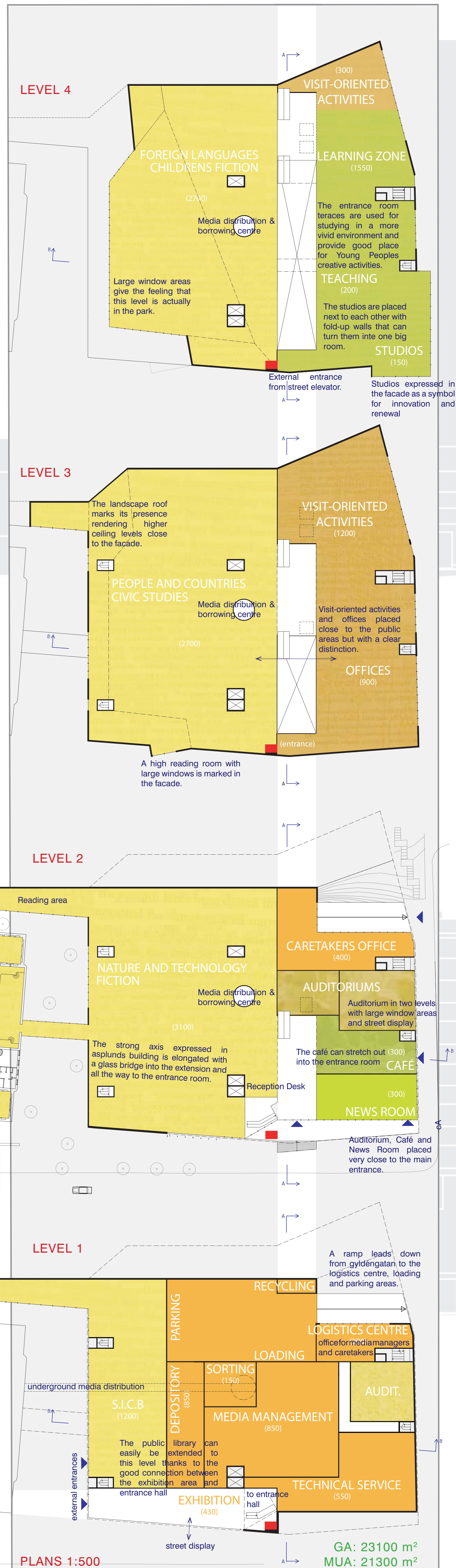
The proposal keeps Asplund's jewel as a vital part of the composition and furthermore enhances its qualities. The extension is made as a part of the hill, attracting even more attention to its counterpart. Seen from Sveavägen, the new building is nearly imperceptible. However, the urban face towards Odengatan is distinguished by an elevated stone facade, like a sheer hillside catching the eyes attention. Showing respect to Gunnars masterpiece by revealing its facade, it bends downwards like a bow to emphasize the exterior of the rotunda.

The Asplund library and its extension are inter-connected with a thin glass bridge that becomes a natural continuation of the visitors movement from the rotunda and vice versa. Glass walls at street level gives the extension it lightness and invites people in by revealing its content. A high entrance hall is placed in the centre and illuminated through a glass ceiling. It raises in teraces through the library all the way up to the Observatory Hill park. The roof is tilted to provide a cultivated landscape planted with grass and trees, why not bring a book here?

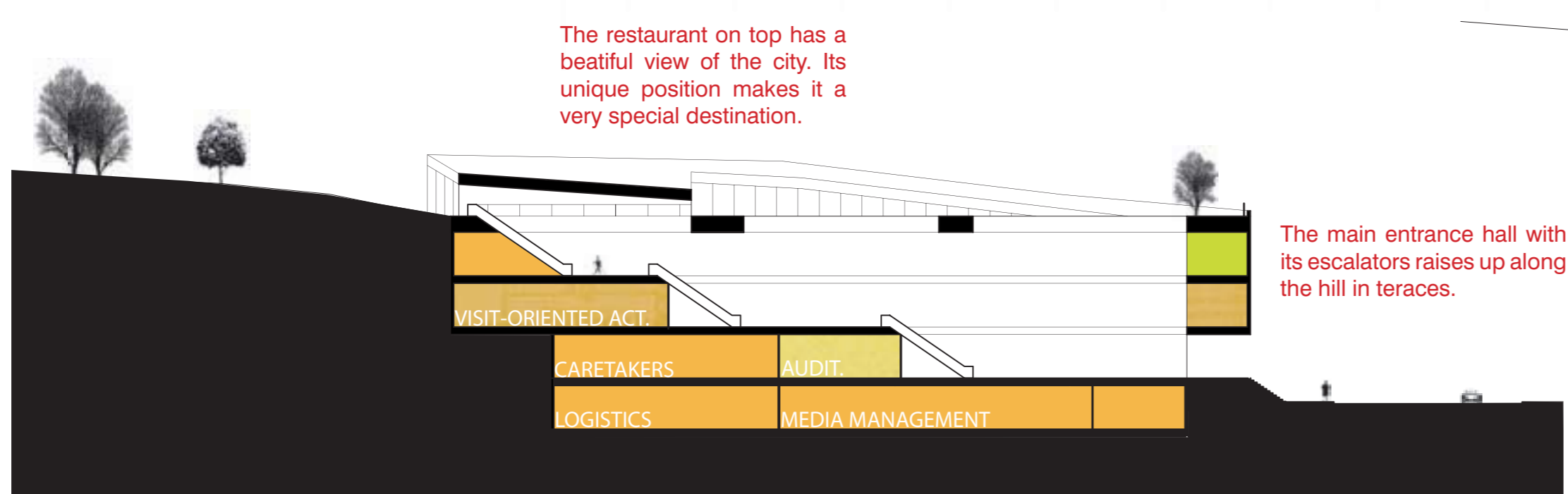
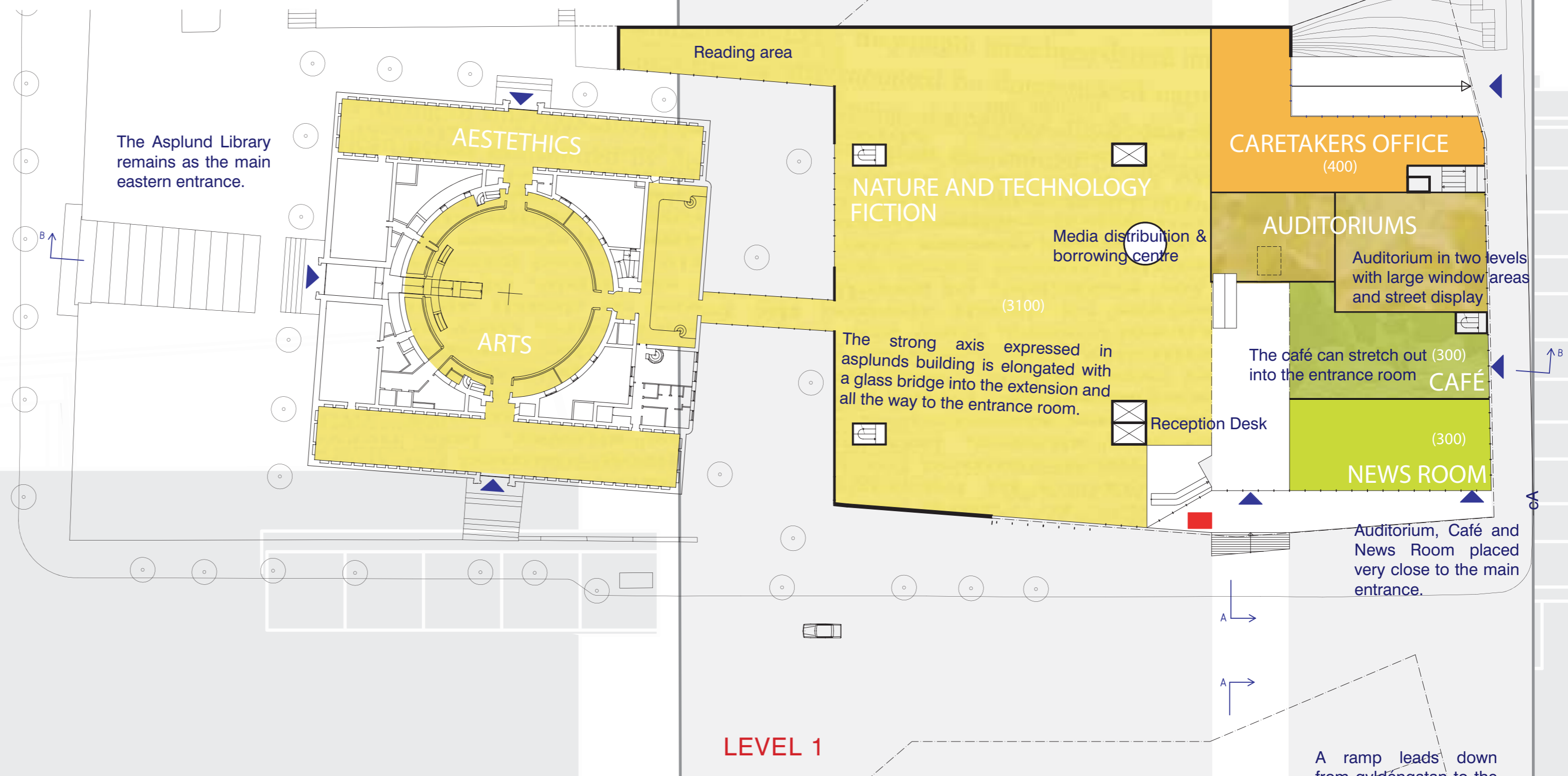
The whole building being made like a landscape brings each floor its own personal shape and qualities. This makes the building flexible and easy to change without losing its strong character so that the public library can continue to take full advantage of future development.



VIEW FROM ODENPLAN



SECTION B-B 1:500



SECTION A-A 1:500

Different personnel areas are put together for good cooperation without passing public areas.

PLANS 1:500