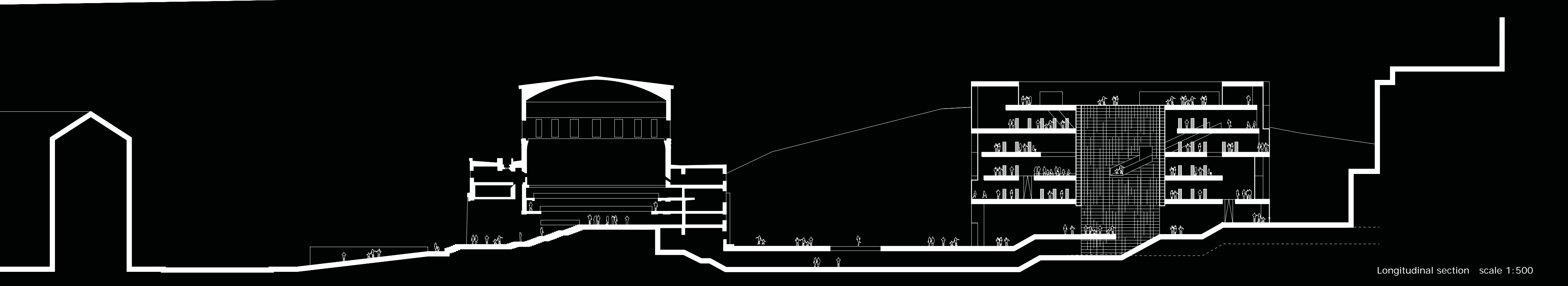
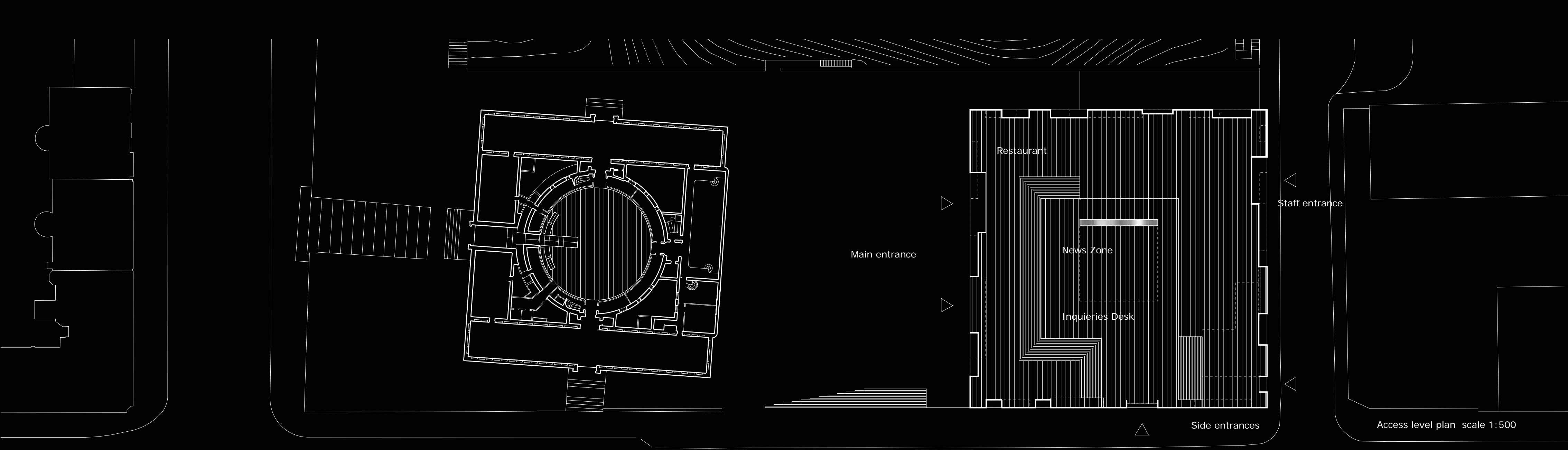


Facade Odengatan scale 1:500



Longitudinal section scale 1:500



Access level plan scale 1:500

**Stockholm Public Library Competition**

With this proposal for an extension to Gunnar Asplund's Public Library, we have created a building complex, that together with the existing building, will live up to the ambitions to maintain and develop the Public Library as the main library of the city and as a central meeting place for reading and learning in the sparkling cultural city of knowledge that is Stockholm.

The new Public Library

Our proposal for a new Public Library building is formed as a compact building inspired by Umberto Eco's text: "... a library is the best possible imitation, by human beings, of a divine mind, where the whole universe is viewed and understood at the same time. A person able to store in his or her mind the information provided by a great library would emulate in some way the mind of god."

The new Public Library is a cubical building that is the conceptual representation of the human mind, where all the resources of the available information technology's memory bank, or mind, are at the fingertips of the individual visitor as well as the sensuous sensation of reading in a beautiful book.

**Context**

The area around Observatory Hill is a district symbolizing knowledge and education in Stockholm. Most of the buildings are monolithic in nature and have a high cultural value while respecting the city's right-angled grid. The two notable exceptions to this are the Observatory building on top of Observatory Hill and Asplund's Public Library.

The Asplund Public Library building is placed

as a concentrated building with the lending hall as a central cylindrical space with four closed wings around it, as an icon for "the library" as a timeless concept. This is further accentuated by the building's placement on top of a horizontal platform, created by the terraces facing Sveavägen where the bazaar buildings are placed, and the relationship to the park and its reflecting pond at the foot of the green slope of the hill, and by the library building's slight angle to the city's right-angled grid.

**The platform**

We have extended the platform formed by the bazaar buildings on Sveavägen along Odengatan to Gyldeängatan to create a terraced sequence of public spaces. This platform will be the common base for the building complex consisting of Asplund's Public Library building and a new Public Library building placed on the corner of Odengatan and Gyldeängatan. The two buildings frame, and will be connected by, a new Public Library square that will give access to both buildings.

The new Public Library building is a compact cubical building, placed on the extended terraced platform, that has a clear spatial relation to Asplund's Public Library building, and by following the city's right-angled grid system the new building respects and enhances the slight angle that Asplund's Public Library building has to the grid. The extended platform cuts into the north-facing slope of the hill leading up to Observatorielunden, thus creating a well-defined contrast between the cultural landscape of the platform and nature in the form of Stockholmsåsen.

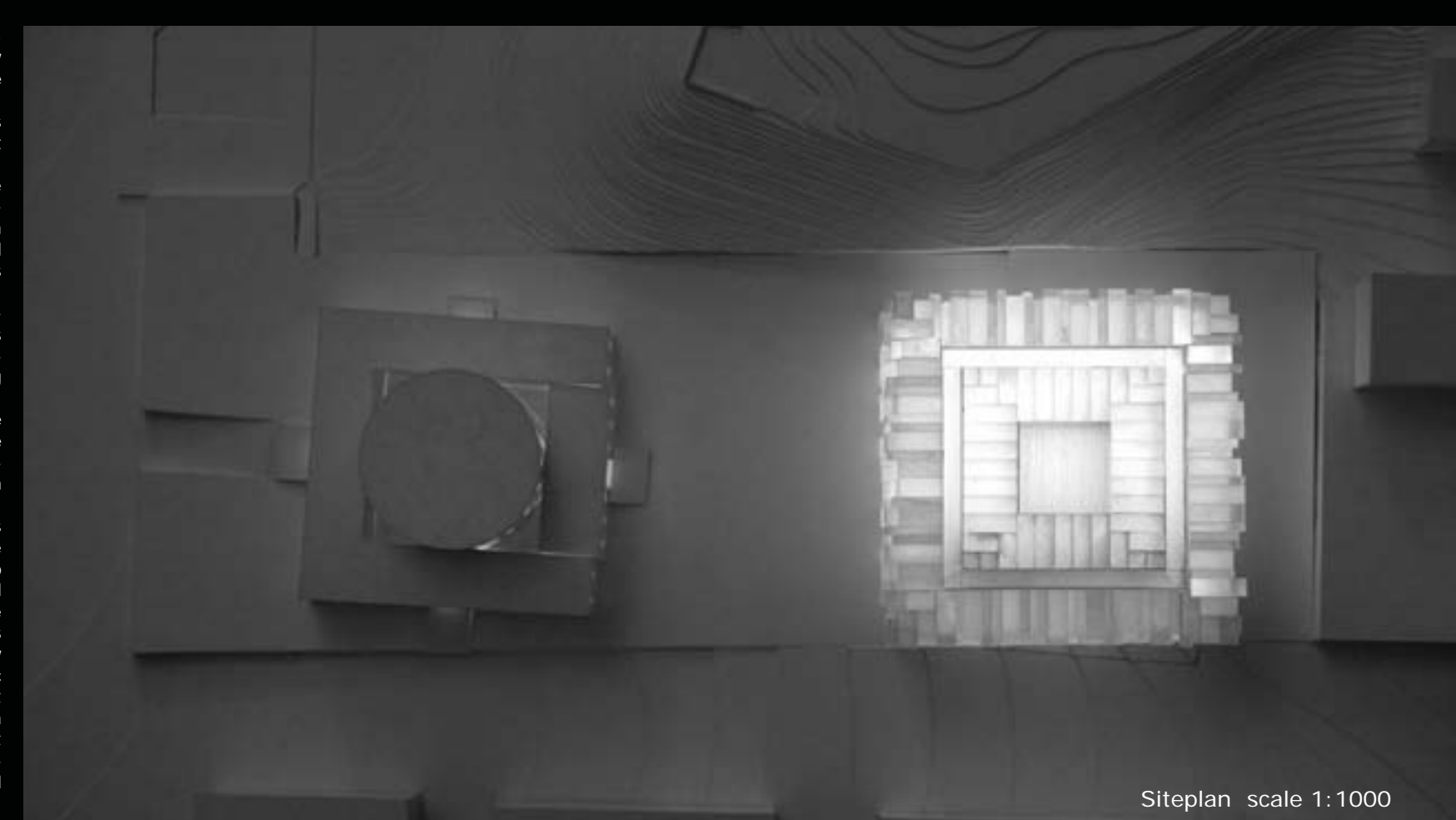
The terraced platform defines a series of outdoor public spaces that form the scenography for the new public life that will surround

Asplund's Public Library building thus supporting its iconic status, as well as defining the new entrances and outdoor spaces in relation to the new Public Library building.

Underneath the terraced platform a series of underground spaces are used for subservient functions.

- below the new Public Library building, the depositories, sorting machines, media management and loading platform are situated, with direct access from Gyldeängatan. Canteen and toilet functions for both visitors and employees alike are also placed here.
- below the new Public Library square we propose to place the Swedish Institute of Children's Book in conjunction with an underground connection between the new Public Library building and Asplund's Public Library building.
- in the part of the platform consisting of the bazaar buildings facing Sveavägen we propose to place certain public functions that would benefit from being placed here with access from Sveavägen.

By placing as many secondary functions as possible under the terraced platform, it will be possible for Asplund's Public Library building to be refined in its original form and be restored to its original condition as far as possible, while ensuring the needs of a modern library. As well as making it possible to create a very compact new Public Library building containing mainly public spaces, that will have a straightforward layout with a series of very flexible spaces, resulting in a spacious building that is welcoming and that encourages both accustomed and not so accustomed visitors in their learning experiences, and offers them a varied environment.



Siteplan scale 1:1000

**Access**

The two Public Library buildings frame the new Public Library square and create a direct visual connection from Odengatan, across the new square, to Observatorielunden. The building complex will enhance the visual connection to Odengatan, thus entailing and accommodating the flow of people that in the future will be moving between the open area, the stations and the new Public Library. This strengthens the area as a regional meeting place and a new focal point in the further development of the city centre, while safeguarding the inherent values of the area.

The main entrance to the new Public Library building's ground floor is from the new Public Library square, with side entrances from Odengatan and staff entrances from Gyldeängatan. The south eastern corner of the ground floor is occupied by the library's restaurant, with the possibility of outdoor service on the square during the sunny half of the year, thus attracting and concentrating public life on the new Public Library square. The library's café is located on the top floor with direct access to the roof garden and with fantastic views over the rooftops of Stockholm. It is possible to create a bridge-like connection to Observatorielunden on top of the hill from the top floors roofgarden.

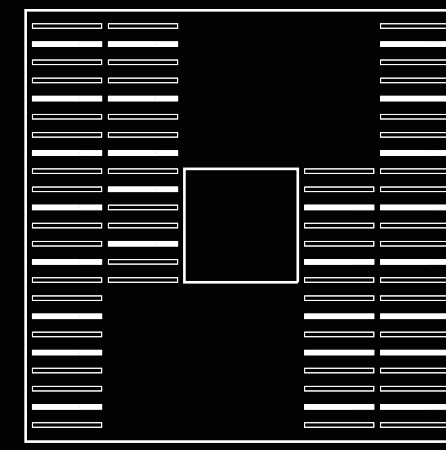
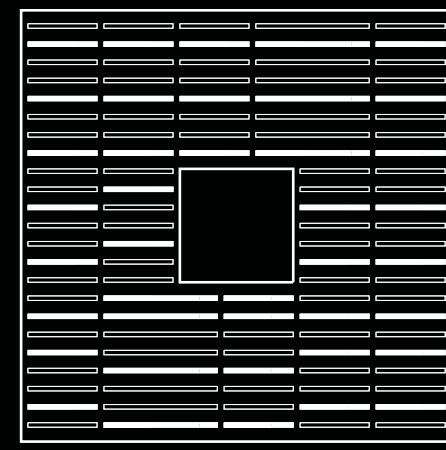
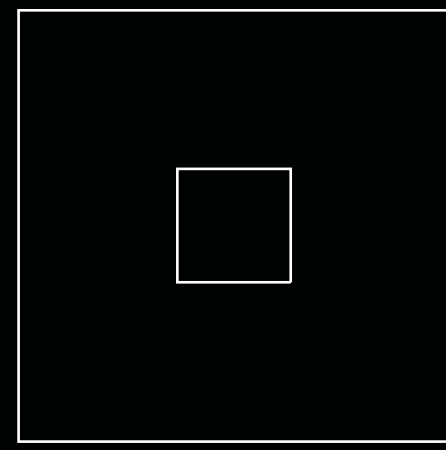
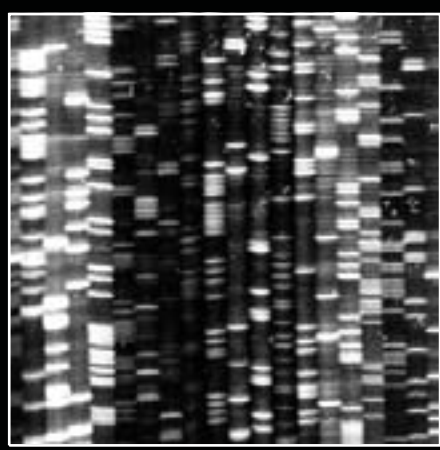
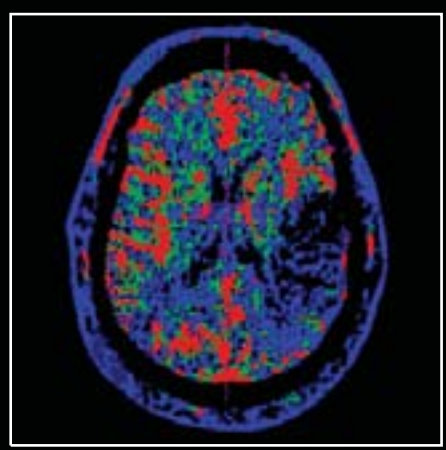
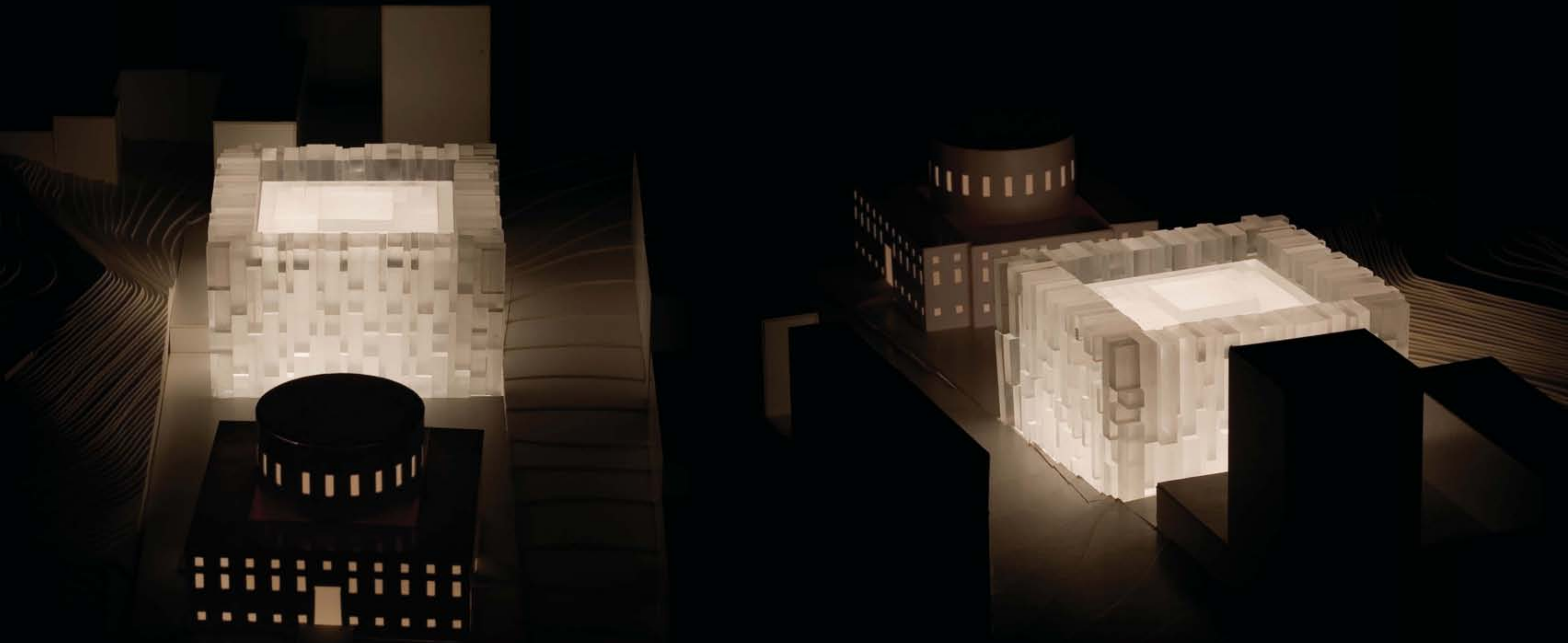
From the new Public Library building's ground floor, the underground connection between the new Public Library building and Asplund's Public Library building can be connected to the planned underground shopping center at Odengatan. As an alternative to the existing western facade of Asplund's Public Library building, that currently has a secondary character with loading docks

and staff entrances, we propose that this facade be remodelled to better suit the new status facing the new Public Library square.

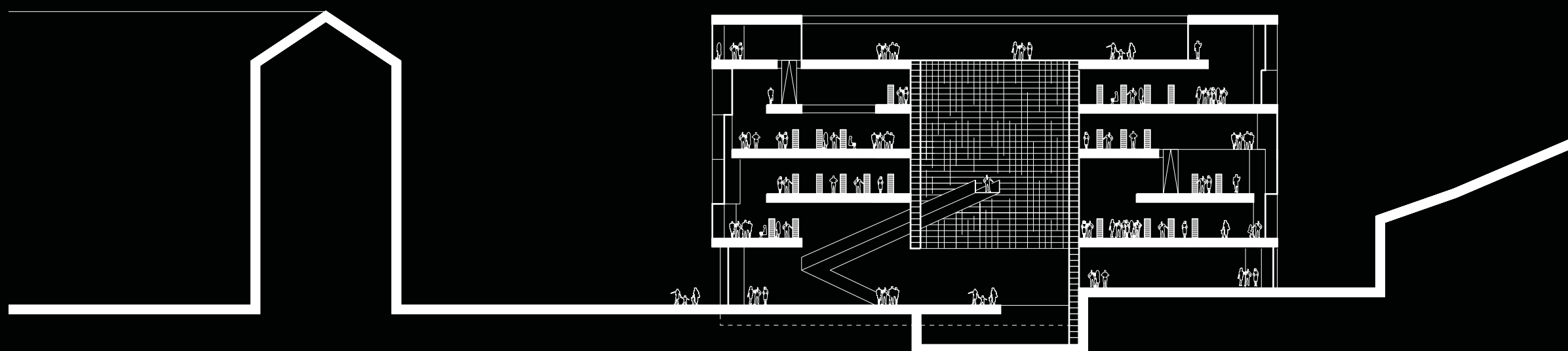
**The new Public Library building**

The new Public Library building is a crystalline construction with facades that emulate the forms found in nature, our minds and in digital data structures, the prevalent storage and communication form of our increasingly information dense world. The library as a rendition of the human brain or digital processor and its function as a physical framework for the search for knowledge, as stated by Umberto Eco in the article "De Bibliotheca". One of the misunderstandings that dominate the concept of libraries is that you go into one to look after a book whose title you already know. In reality it often happens - the principal function of the library - is to discover books whose existence we never expected, only to discover that they are of extreme importance to us.

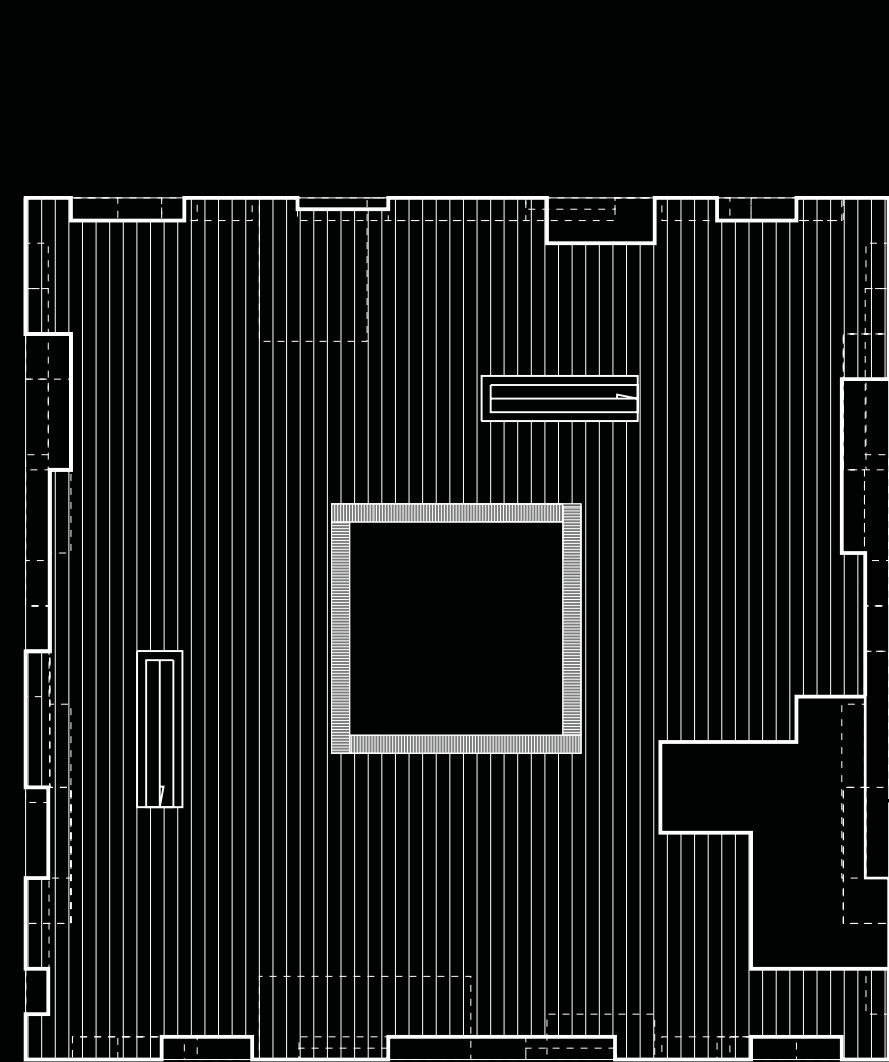
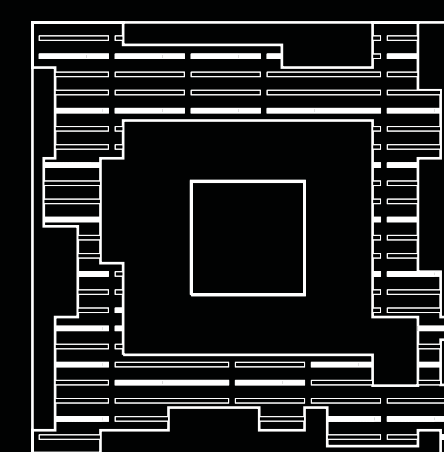
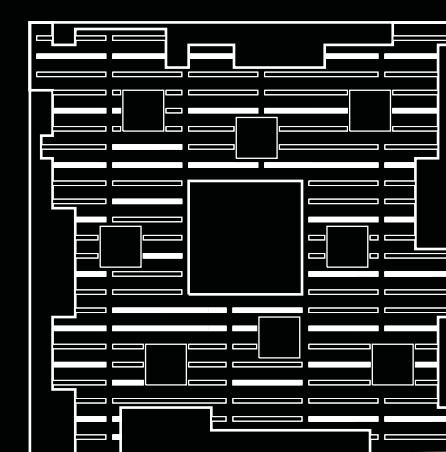
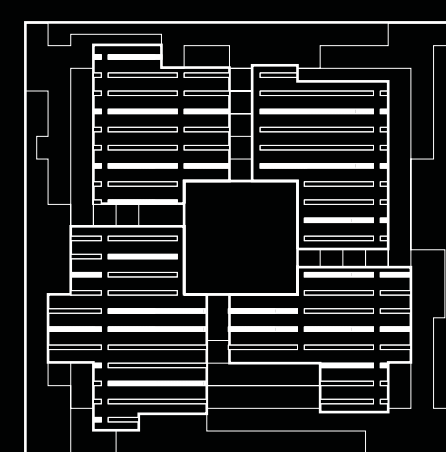
The new Public Library buildings levels are interconnected with a series of vertical transport systems, stairs, escalators and elevators that support the different patterns and flows created by the three most important factors of the library - the users, the media and the staff. The vertical transport is divided into two routes through the library complex - a direct route between the floors and the main subject areas - and an indirect one that encourages and entices exploration. These vertical movements ensure that the library functions well, while giving the users and staff the possibility to explore the many possibilities that lie inherent in the media organisation of the new library.



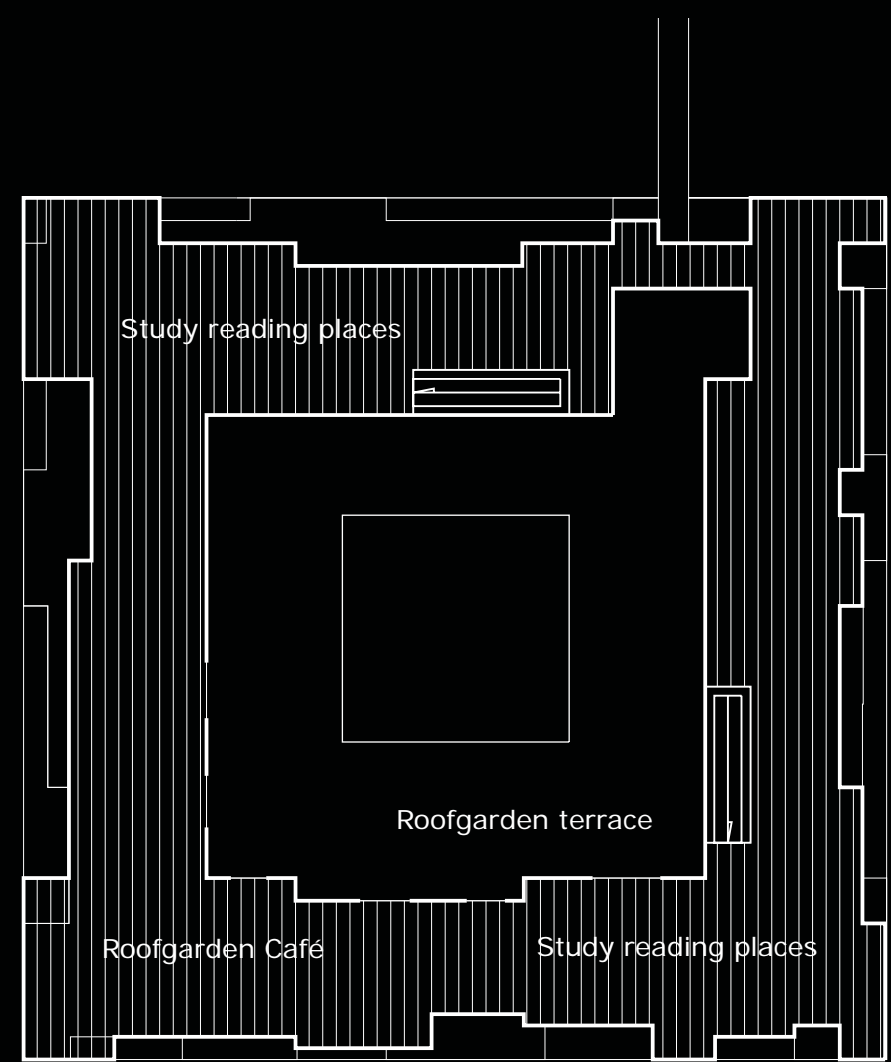
Plan principles scale 1:1000



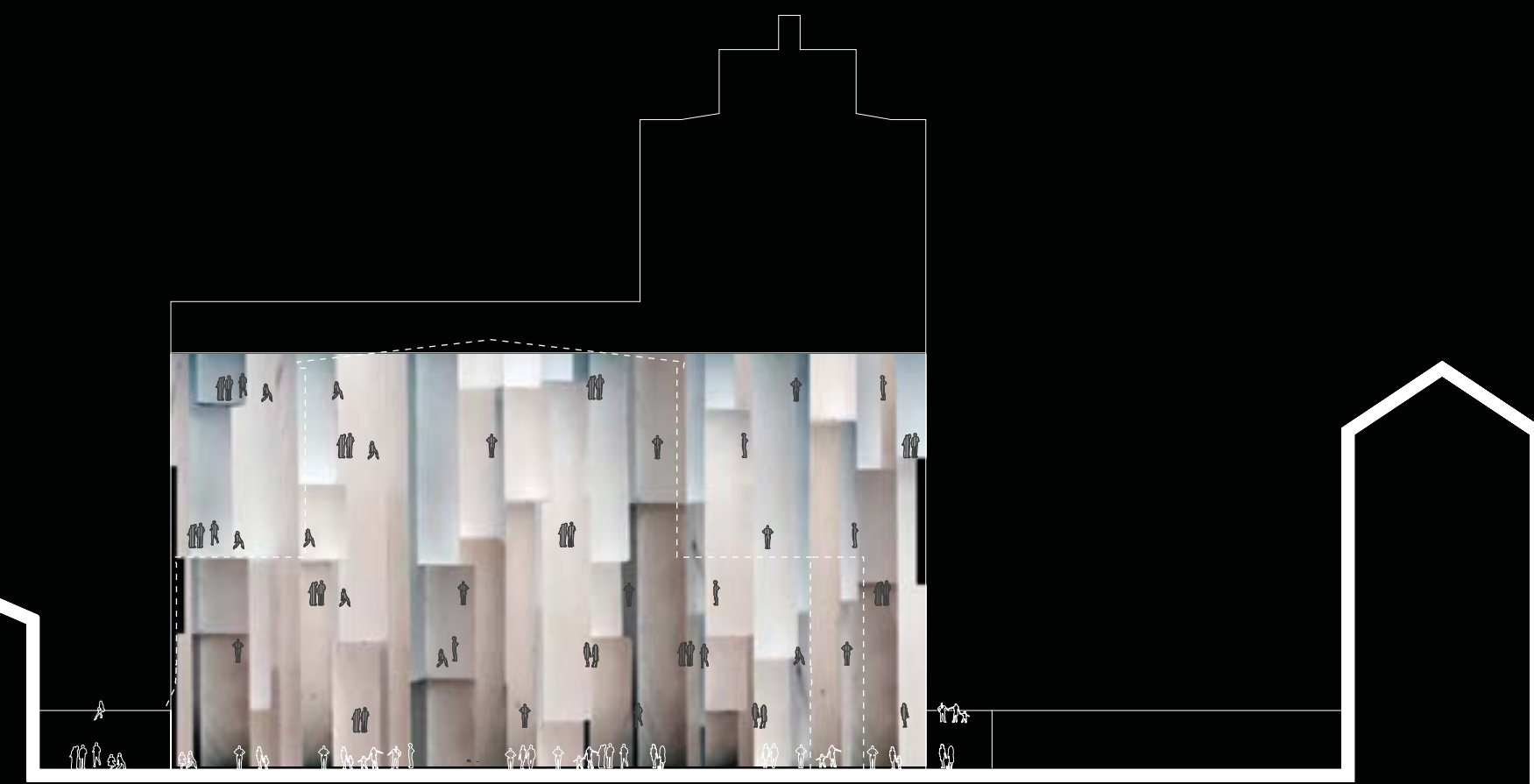
Cross section scale 1:500



Plan example - scale 1:500



Toplevel plan scale 1:500



Facade Sveavägen scale 1:500



As in Asplund's Public Library building the new Public Library building is a concentrated building with a clear middle point, a vertical tube that functions as the library's spinal cord, a void that catches the sun's light entering through a large skylight and connects all the floors of this large building together. The vertical tube is surrounded by bookshelves, with a sandblasted glass facade towards the void, this provides the tube with an abstract image of the library as a bookshelf. The vertical tube of bookshelves is visible from Odengatan and the new Public Library square. When entering the ground floor lobby the visitor will see one side of the vertical tube as the background for the main lending and reception area. The vertical tube is the buildings core, from this central point all functions and spaces open up onto the facade and the surrounding city.

The new Public Library building contains a series of flexible spaces that can be modified and developed in a wide variety of ways. This creates an open, varied and adaptable library environment that provides options, both silent and lively environments and reading and study areas for individual or group work, reinforcing the library's role as an active and important source of inspiration. The individual floors will be furnished according to the program in collaboration with the client in the next stage of the competition and in a continuous process in the lifetime of the building, to obtain the optimal physical structure for the users of the library in an ever-changing world.

The flexibility and the wide variety of the building's inner spaces will create a diverse physical structure for the library of the future

that will provide far greater possibilities for the many new types of media to interact and for visitors to use more types of media at the same time, both individually and in groups, as well as creating a diverse and inspiring architectural frame for visitors who come in search of experiences, entertainment or just want to meet with others and feel a sense of community, start discussions or find peace in an environment of quiet contemplation.

**Areas:**

Public & administrative spaces in the Asplund Public Library building	7.500 m <sup>2</sup> MUA
Public & administrative spaces in the new Public Library building	12.300 m <sup>2</sup> MUA
Depositories and media management in the platform	2.700 m <sup>2</sup> MUA
Public spaces in the bazaar buildings (in the platform)	1.000 m <sup>2</sup> MUA
Swedish Institute of Children's Books in the platform	1.200 m <sup>2</sup> MUA
<b>Total MUA area</b>	<b>24.700 m<sup>2</sup> MUA</b>
<b>Total gross area</b>	<b>29.850 m<sup>2</sup></b>

