

/Asplund

Architectural Competition
The Stockholm City Library



The new library is a big public extrovert space characterized by transparency.

In a "difficult" context where everything is value, we committed to transparency as mediator.

It mediates between interior and exterior, tall and low, new and old, nature and building.

The new library is the opposite of the Asplund's library.

The new library is the Asplund's library re-interpreted.

If in the former the platform where it lies mediates between the ground and the building, in the latter the tiered structure, clinging to the hill, mediates between that one and the four annexed buildings.

The starting idea was to find spatial and functional element of continuity between the two parts, an horizontal plane (+12.30) that starts from the "bazaar buildings", goes under Asplund's library and arrives over the third annexe. The horizontal plane creates a common vital space, facilitates the direct access and the communication between the parts, "le plateau" on which are lied and presented to the public the characteristics of the whole complex. An invitation to discover, experience, contemplate.

Again the opposites: in the Asplund's library we go up to reach the central point, in the new library we go down and disperse; we try to create functional and spatial unity subordinating and adapting the new to the existent as much as possible.

The wall papered by books is the symbol image of the library. Letters, lines, pages makes the book. A not-specified number of books makes a shelf. Many shelves makes a library. Many libraries makes a gallery. In order to create a visual stimulating tension and, by transparency, a exchange of informations inside-outside, the "annex-shelves that close the galleries".

The annexes 1 and 2 have maintained the "characteristic gable entrances" towards Odengatan, receiving a new structure. To preserve the image of classical spirit, the new structure has been hidden by the shelves of books. So that people and books animate the environment and this whole scene can be perceived both by interior and exterior. The annex 3 has been maintained completely with an extension of two floor on the lower part that draws on the architectural appearance of the building by its details.

To complete the Asplund's plan (1928) it has been built the fourth annex that makes an functional and structural unity with the annexes 1 and 2.

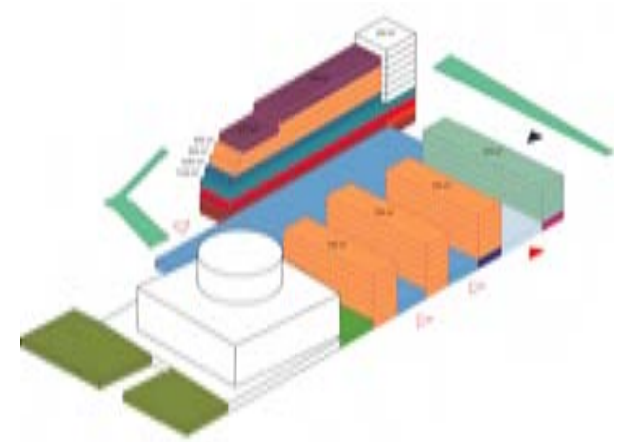
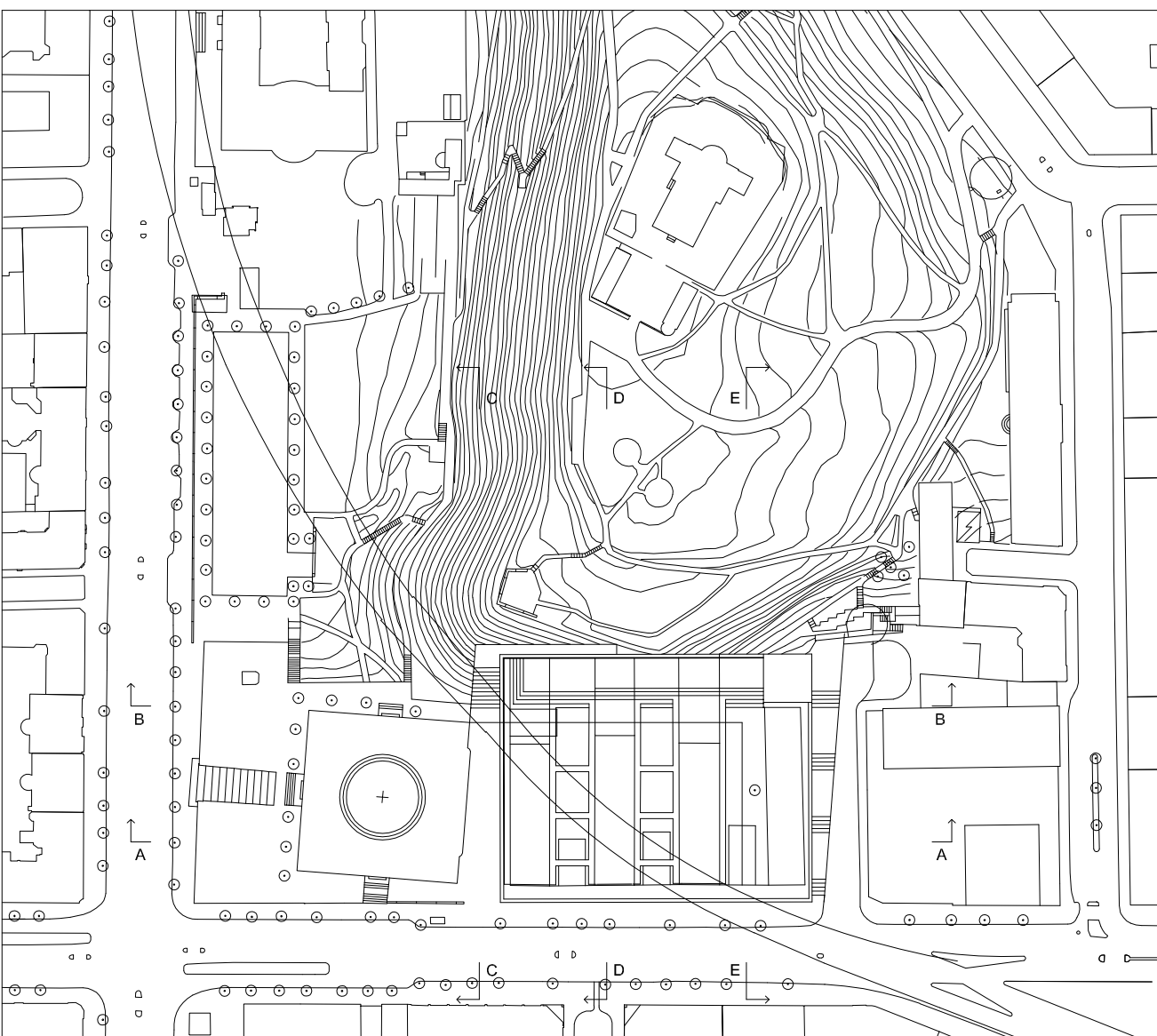
The "tiered form" mediates between nature (the hill of the observatory) and construction, the annexes to which it is connected fisically and functionally and that form the new library.

The spatial structure of the "tiered form" lets the sight reach the hill the best way and facilitates the access to it. Spaces hollowed out the hill close by the "tiered form" diversify the appearance of the complex with the half-darkness. So that the range of light inside the building goes from the full natural sunlight to the darkness of spaces devoted to study, meditation or rest.

The access to the new library takes place towards four wide flights of stairs inspired by the big flight of entrance to the Asplund's library towards Sveavagen; the fact of descending to a great common space is stimulating for the flow of people coming from Odenplan. Moreover, in order to facilitate the access to Observatory Hill, we suggest a pedestrian flight on Gyldegatan, flight that rises above the street partly. Near Spelbomskan square a way between the Asplund's library and the new annex takes to the wide flight to the Observatory Hill, accessible also from the library's park. The holistic concept of integration between existing and new, nature and construction is translated to a re-interpretation of existing by a balanced dialogue between classic-modern and contemporary that should lead to an act out of time. Because time works on man in a strange way.

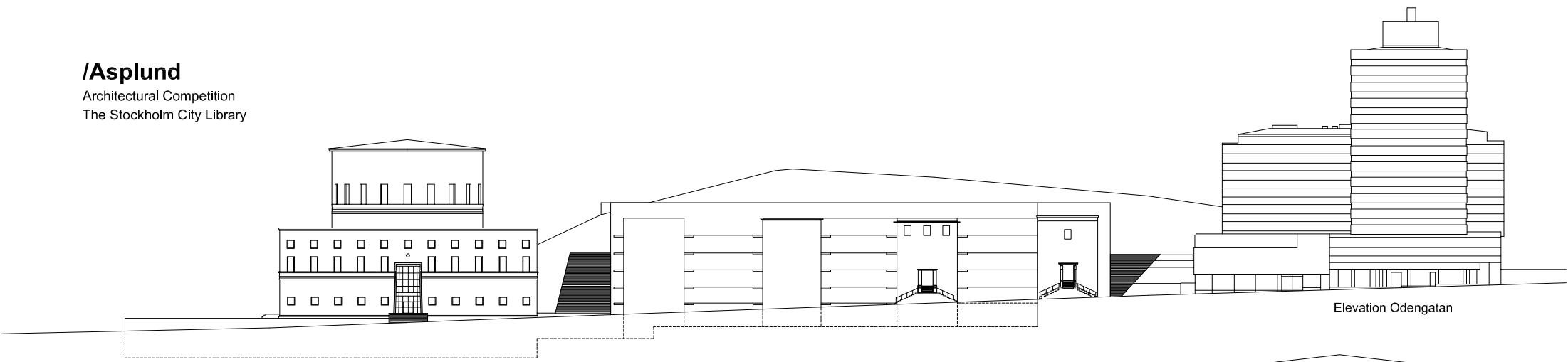
"Man is separated from the past by two forces co-operating together: the force of oblivion (that erases) and the force of memory (that transforms). Over the thin border of what is indisputable spreads the space of approximation, invention, deformation, simplification, exaggeration, misunderstanding, an endless space of not-truthes that couple, multiply as mouses and became immortal." Milan Kundera, *Le rideau*

- Main Entrance
- Flexible Open Space
- News Zone
- Learning Zone
- Studios, Teaching Rooms, Auditorium
- Subject Areas / Open Media Collections
- Visit - Oriented Activities
- Sorting Machine & Media Management
- Logistic Centre
- Depositories
- Café
- Café / Restaurant
- Administration & Staff
- The Swedish Institute of Children's Books
- Access to Observatory Hill
- ▶ Entrance

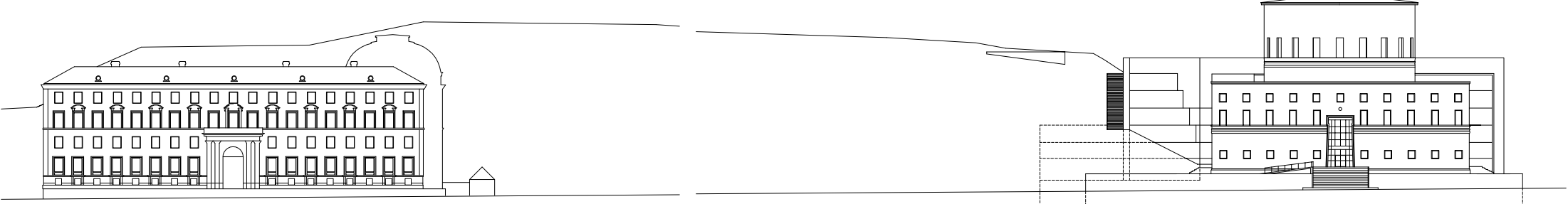


Public Areas 17 606 m²
 Depository Media Management 2 805 m²
 Administration and Staff 3 500 m²
 The Swedish Institute of Children's Books 1 200 m²
 MUA 25 111 m²
 Gross Area 30 343 m²

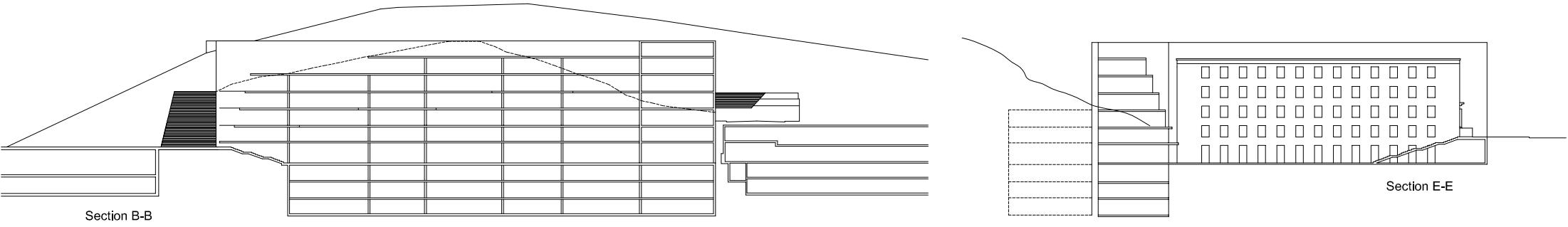
/Asplund
Architectural Competition
The Stockholm City Library



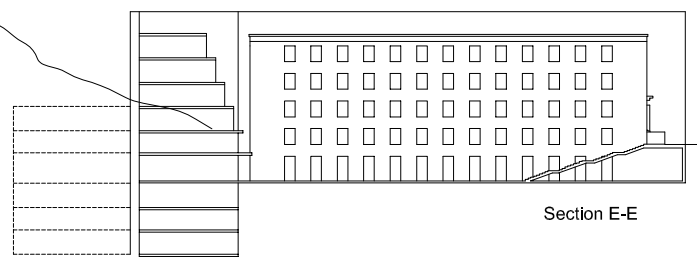
Elevation Odengatan



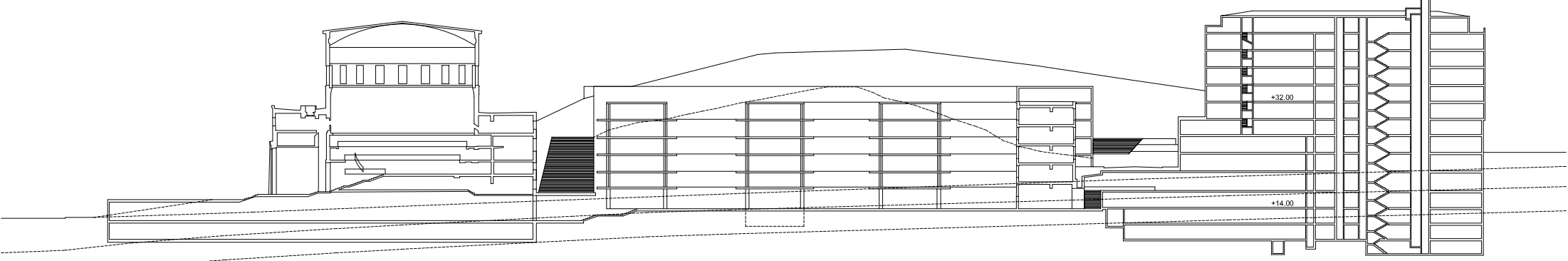
Elevation Sveavägen



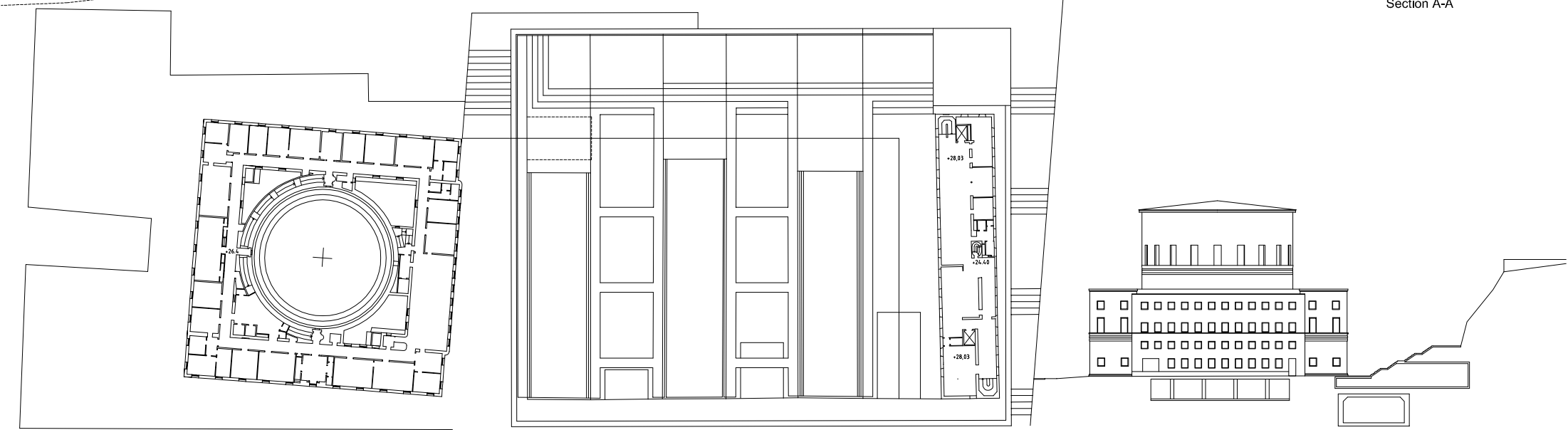
Section B-B



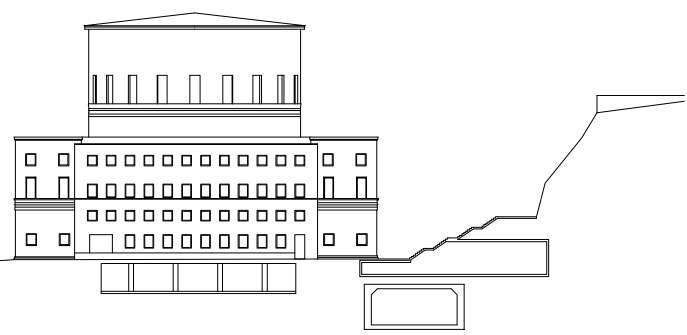
Section E-E



Section A-A



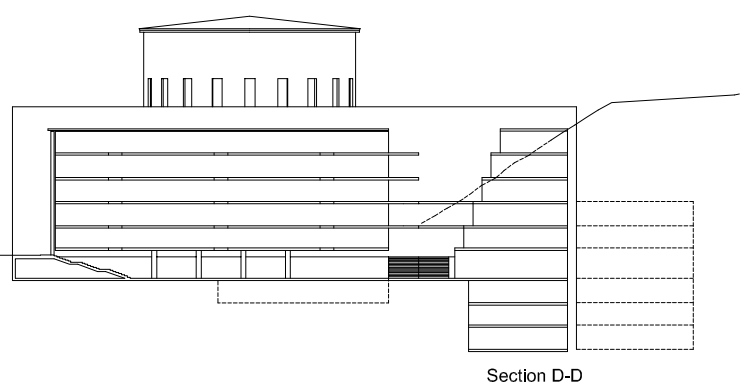
Plan +32.00



Section C-C



Plan +14.00



Section D-D