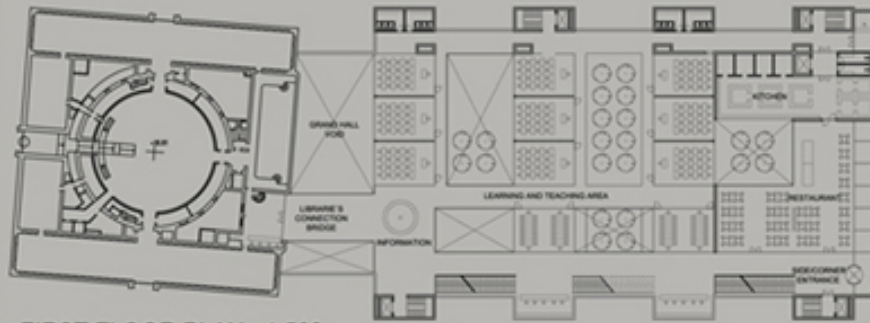
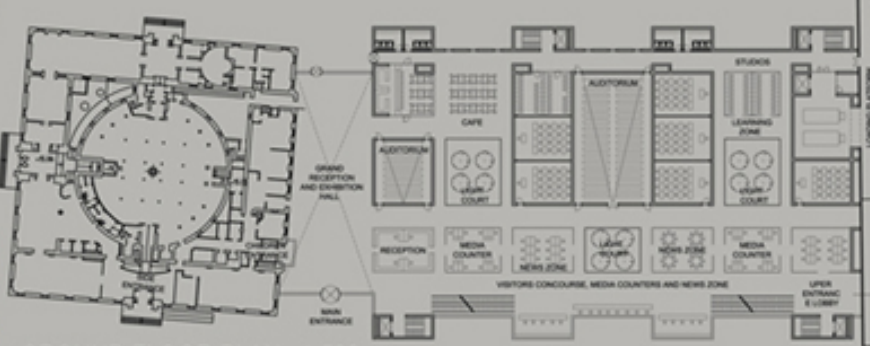


SECOND FLOOR PLAN 1:500



FIRST FLOOR PLAN 1:500



GROUND FLOOR PLAN 1:500



MAIN POINTS WITH RESPECT TO DESIGN CONCEPT

THE SPACE ORGANIZATION AS DEVISED BY ASPLUND BY HIS PROPOSAL FROM 1928 WAS RETAINED AS A SET UP BY THIS COMPETITION PROPOSAL. THE IDEA IS BASED ON LINEAR ANNEX COMPOSITION WHICH BY ITS POSITION ENABLES VISUAL CONTACT TO THE PARK-OBSERVATORY HILL WITH ODENGATAN STREET.

THE DECISION TO MAINTAIN ANNEXES OPENS THE KEY QUESTION OF LINKING AND INTERACTION OF THE EXISTING AND NEW LIBRARY BUILDING INTO THE UNIFIED COMPLEX. IT WAS DONE IN THE FOLLOWING MANNER.



BASEMENT FLOOR PLAN 1:500

- A. TO THE EXISTING ANNEXES A NEW ONE IS ADDED ACCORDING TO THE ORIGINAL PROPOSAL BY ARCH. ASPLUND. THE HEIGHT OF THE ANNEX STILL RETAINS THE HORIZONTAL WITH THE COPULUS OF ASPLUND LIBRARY. IN SUCH WAY THE PROPORTION AND RHYTHM OD GEVEN COMPOSITION BECOME BASIS FOR NEW ADDITIONAL CONSTRUCTION PER HEIGHT.
- B. NEW ADDITIONAL CONSTRUCTION REPRESENTS A GLASS TRANSPARENT PARALLELEPIPED WHICH INTEGRATES FOUR ANNEXES INTO ONE WHOLE. THE FINAL CHARACTER TO THIS FORM IN SPACE ENDOWS THE ROOF SHAPE HORIZONTAL GLASS SLAB / PLATE // WHICH HOVERS ABOVE NEWLY CREATED FORM SO THAT ON ITS RIGHT SIDE IT TRANSFORMS INTO A VERTICAL GLASS WALL-MEMBRANE AND COMPLETES THE COMPOSITION OF THE NEW COMPLEX. / OF THE NEWLY FORMED COMPLEX /
- C. LINK BETWEEN THE EXISTING AND NEW BUILDING MAKES A NEW GRAND HALL WHICH BECOMES A NATURAL PART OF BOTH BUILDINGS.
- D. THE NEW CUBE WITH THE HOVERING ROOF HORIZONTALLY ACCOMPANIES THE HEIGHT OF THE CYLINDRICAL LIBRARY PORTION. / LIBRARY PART /
- E. TO THE LIGHTNESS OF COMPOSITION FURTHER CONTRIBUTES COLOURED BUT TRANSPARENT GLASS WITH A PATTERN WHICH REPRESENTS A STYLIZATION OF WATER AND HEAVENLY SPHERE.

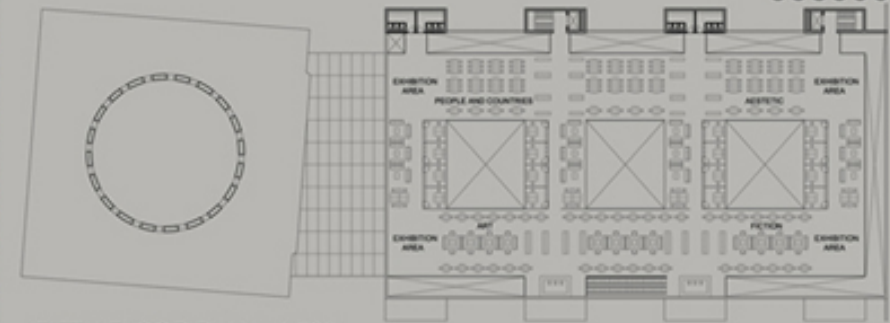
SPACE ORGANIZATION FOLLOWS ADOPTED PRINCIPLES OF FORM ORGANIZATION IN SPACE. THE BASIC QUALITY OF THIS CONCEPT REPRESENTS THE HOUSE-GARDEN ENVIRONMENT/ AMBENT / THE PARK AND THE LIBRARY BECOME COMPLEMENTARY AND PROMISING RELATION WITH REGARD TO HOUSE AND NATURE.



ALTHOUGH AT FIRST SIGHT ANNEX SCHEME IS HARD, IT HAS SIGNIFICANTLY CHANGED WHEN ABOVE EVERYTHING THE GLASS ENVELOPE WAS PLACED AND NEW ENVIRONMENTAL / AMBIENTAL / RELATIONSHIPS OF HIGH QUALITY AND OF IMPLICIT AND EXPLICIT SPACE WERE OBTAINED.

THE LIBRARY REPRESENTS A TEMPLE OF KNOWLEDGE, CULTURAL TRADITION AND FUTURE OF THE NATION AND AS A PUBLIC BUILDING IT MUST OWN EMPHASIZED IDENTITY BOTH IN ITS CONTEXT AS WELL AS IN THE CITY, AND FOR SURE WITH REGARD TO THE STATE. / COUNTRY /

THEREFORE THIS PROPOSAL BEARS ALSO THIS COMPONENT OF THE NEW STIMULUS WITH REGARD TO HE INTEGRATION OF OLD AND NEW, CULTURE AND PROGRESS OF THE NEW AGE. / OF THE NEW ERA /



FIFTH FLOOR PLAN 1:500



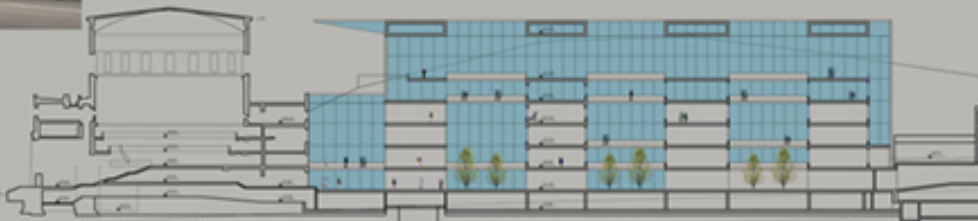
FOURTH FLOOR PLAN 1:500



THIRD FLOOR PLAN 1:500



CROSS SECTIONS 1:500



LONGITUDINAL SECTION 1:500

IT IS WORTHWHILE MENTIONING THAT ANNEXES HAVE AN ESSENTIAL VALUE AS IDEA-FORM-COMPOSITION. AND IT IS ANOTHER QUESTION WHETHER THE EXISTING ANNEXES SHOULD BE KEPT DUE TO ECONOMIC REASONS AND WITH THE THOUGHTFUL RECONSTRUCTION RECEIVE THE SAME RESULT AS IF THE NEW ONES WERE BUILT FROM THE BEGINNING.

THE AREA OF THE NEW BUILDING WAS REALISED AND IT AMOUNTS TO APPROX. 18500m² / 18500 sq.m. / AND THE GROSS AREA OF THE NEW BUILDING AMOUNTS TO APPROX. 22500 m² / 22500 sq.m. / WITH 7500 m² / 7500 sq.m. / OF THE EXISTING BUILDING IT AMOUNTS TO 30000 m² / 30000 sq.m. /

ACCORDING TO THE PROPOSED CONCEPT THERE ARE ADDITIONAL POSSIBILITIES FOR INCREASING-DECREASING OF TOTAL AREA WITHOUT CHANGES OF COMPLEX COMPOSITION.

STRUCTURAL SYSTEM OF THE BUILDING WILL BE COMBINATION OF CONCRETE STEEL AND WITH CLADDING OF COLOURED GLASS.

