



Stockholm City Plan
The new library is designed in respect and inspired by the overall context of the existing city structural grid, the observatory hill, the library park and pond, and the Adolf Fredrik Church.

New library perspective view from Odengatan and Sveavagen's junction



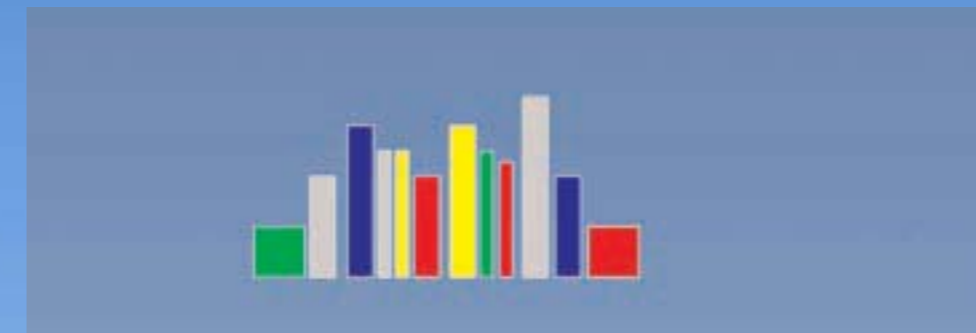
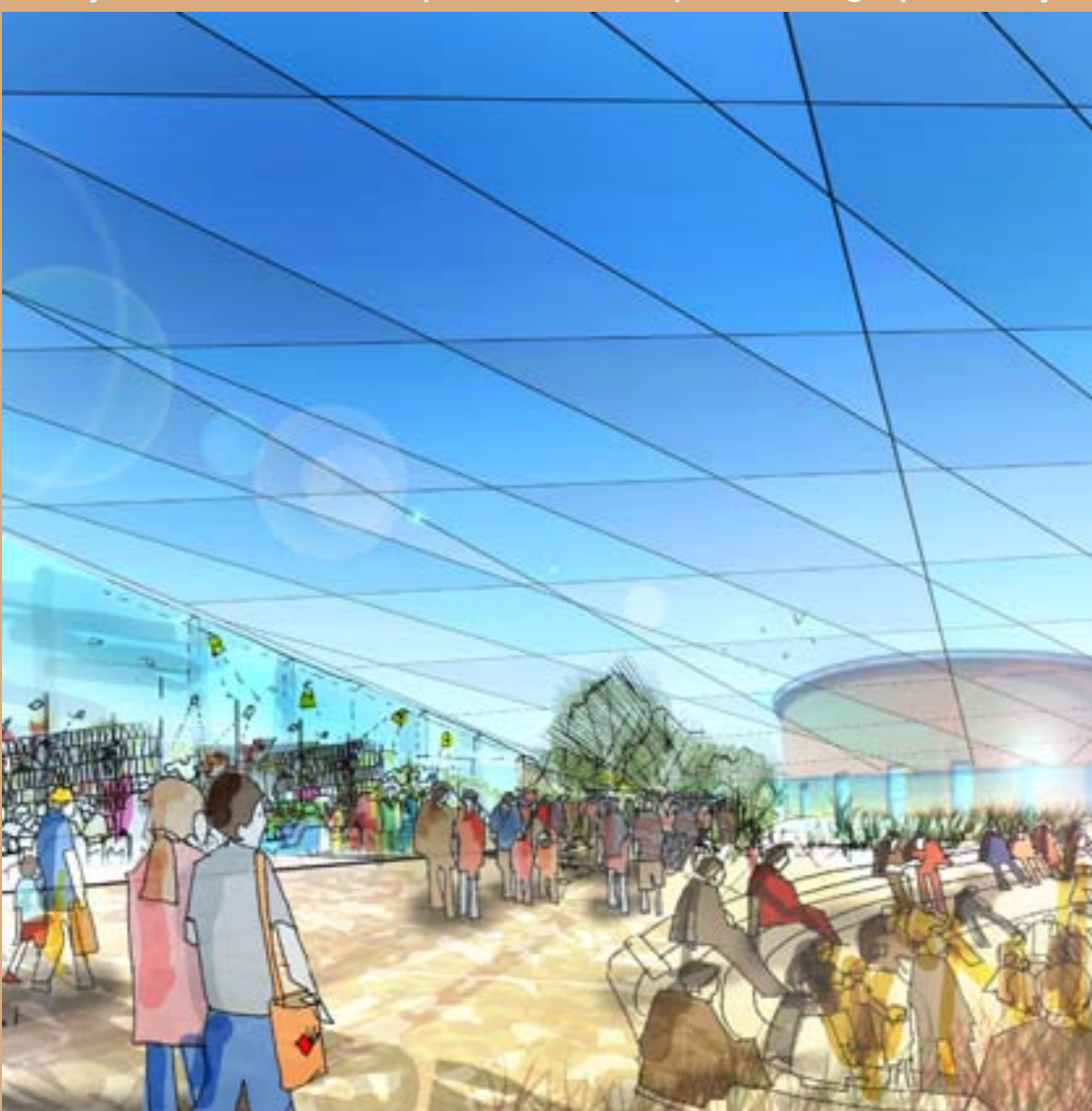
New library perspective view from the park and pond



New library entrance square with activities over the old Spelbomskan Square



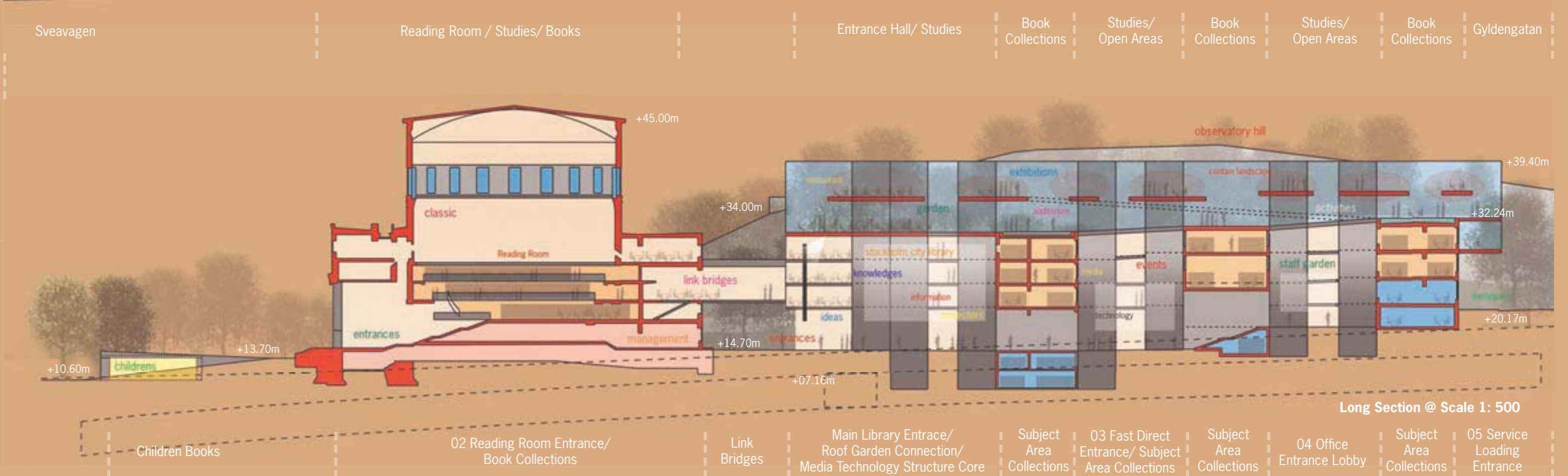
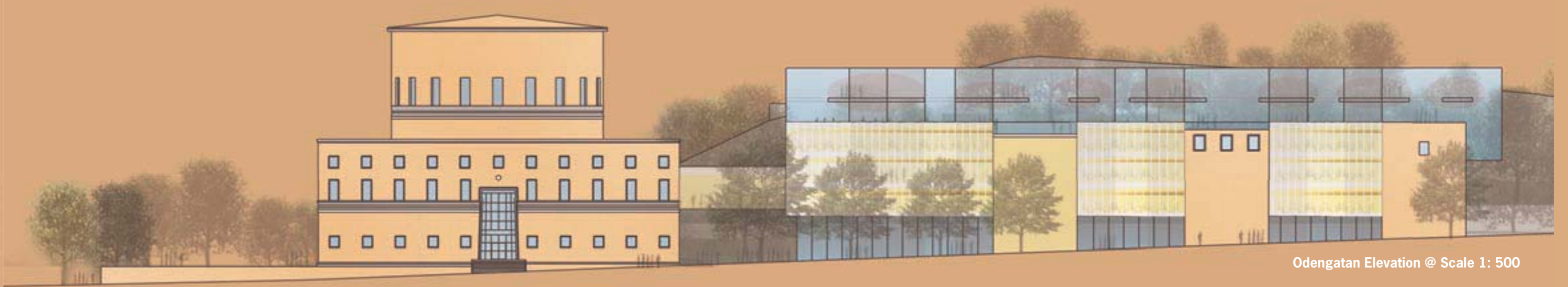
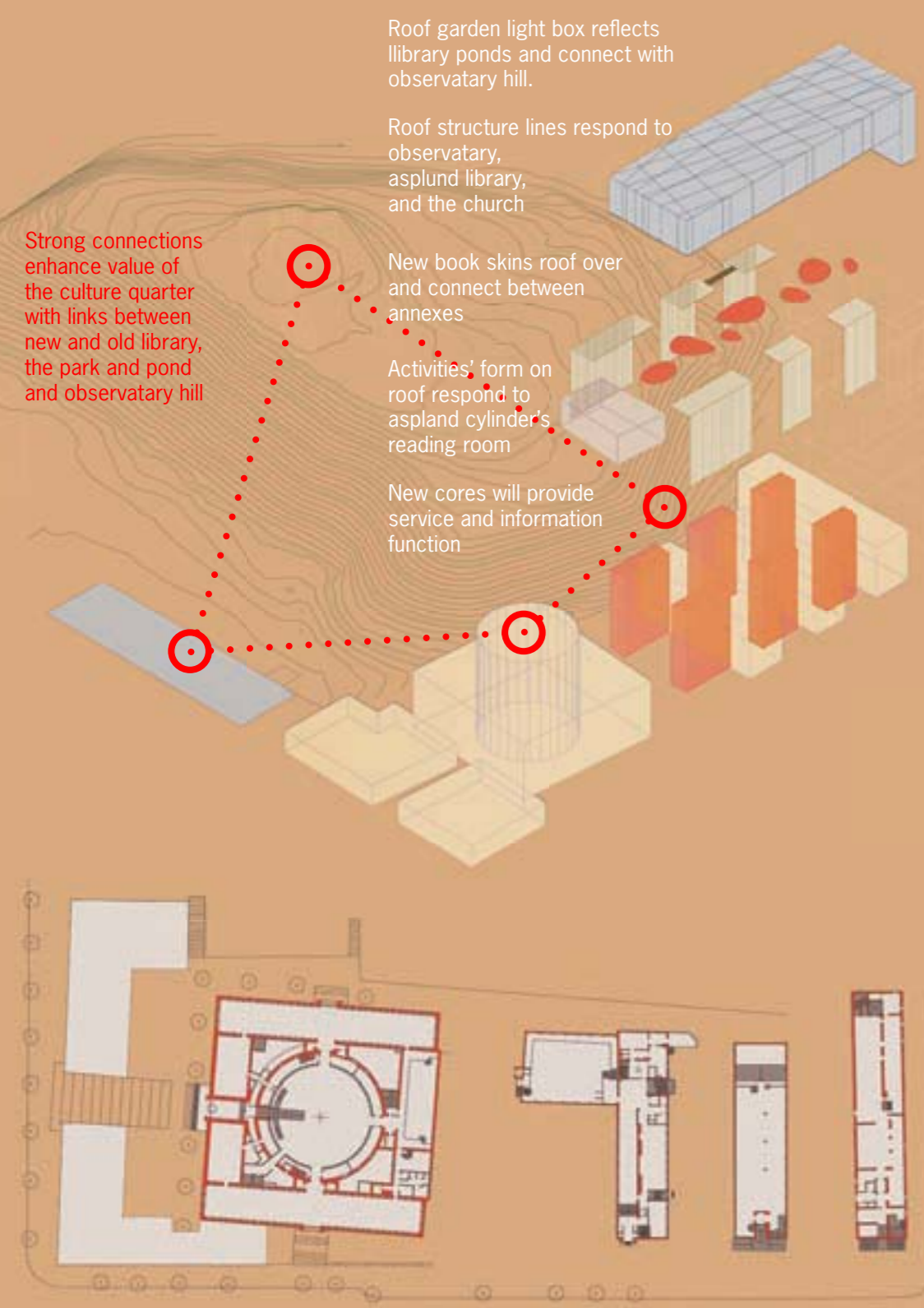
Library activities and relaxation space at roof landscape over looking Asplund library



The Stockholm City Library

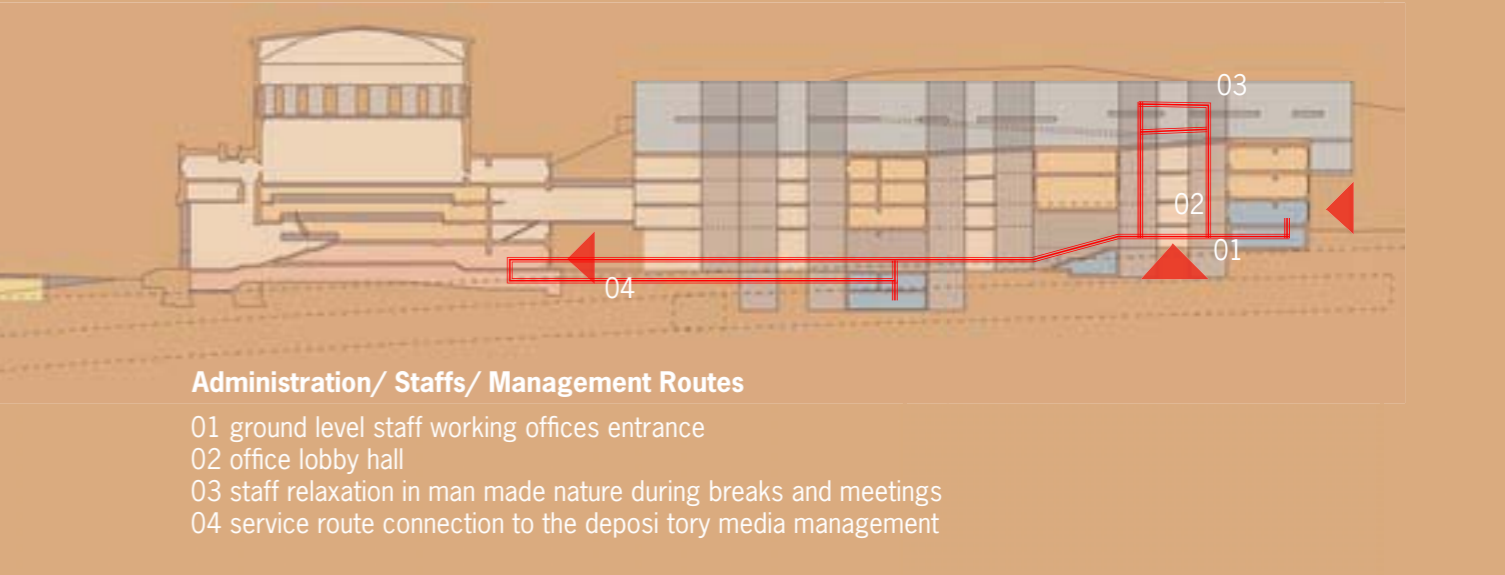
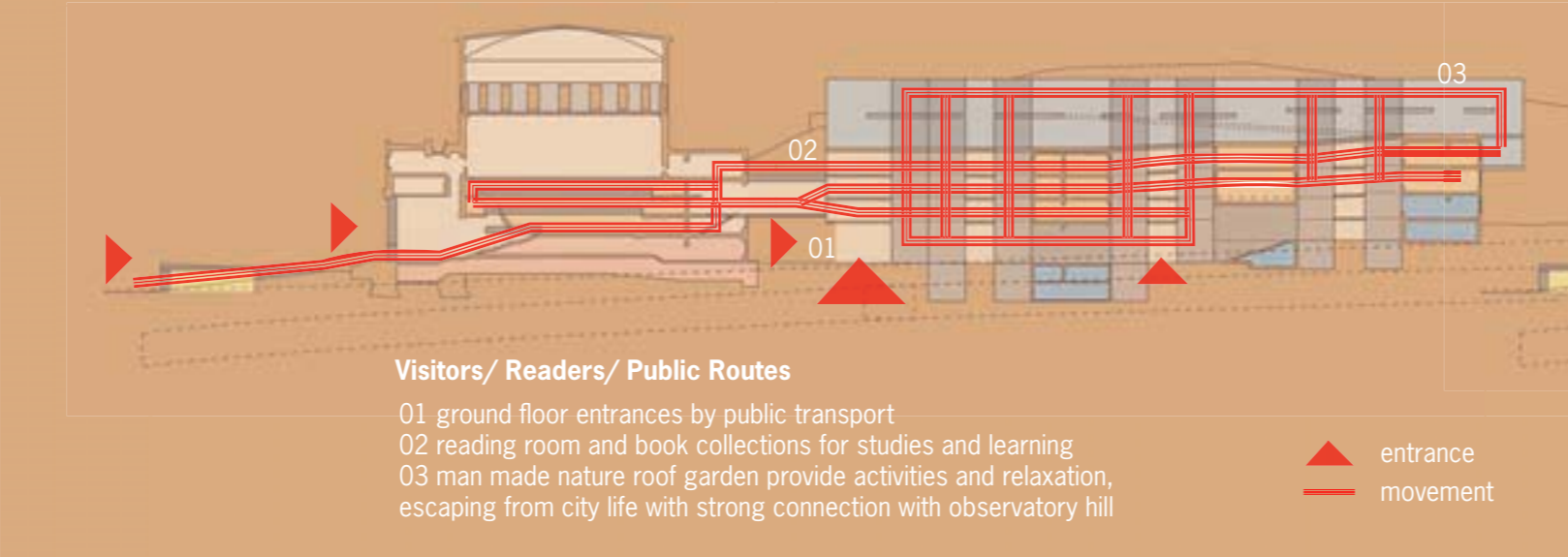
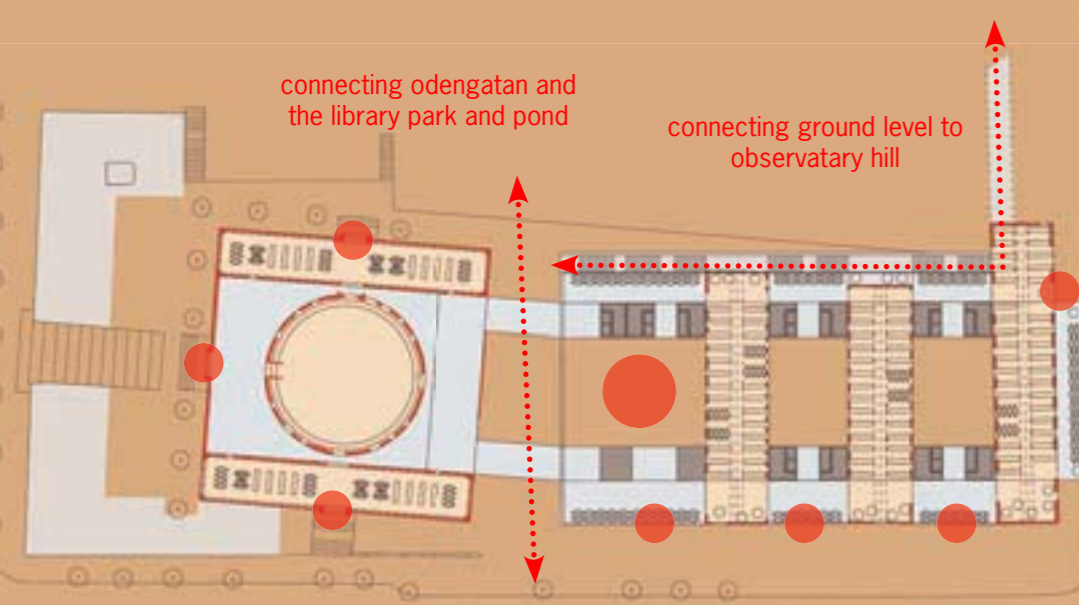
- a new destination for the people and the future of Stockholm
- minimise reconstruction with the concept to put new skins and cores cover on old books
 - in respect and respond to existing city masterplan and cultural value
 - connect knowledge to nature with activities and studies on new public landscape
 - linking entire development from observatory hill to library park and pond
- installation of new media technology on new build facade and structural cores to meet modern needs





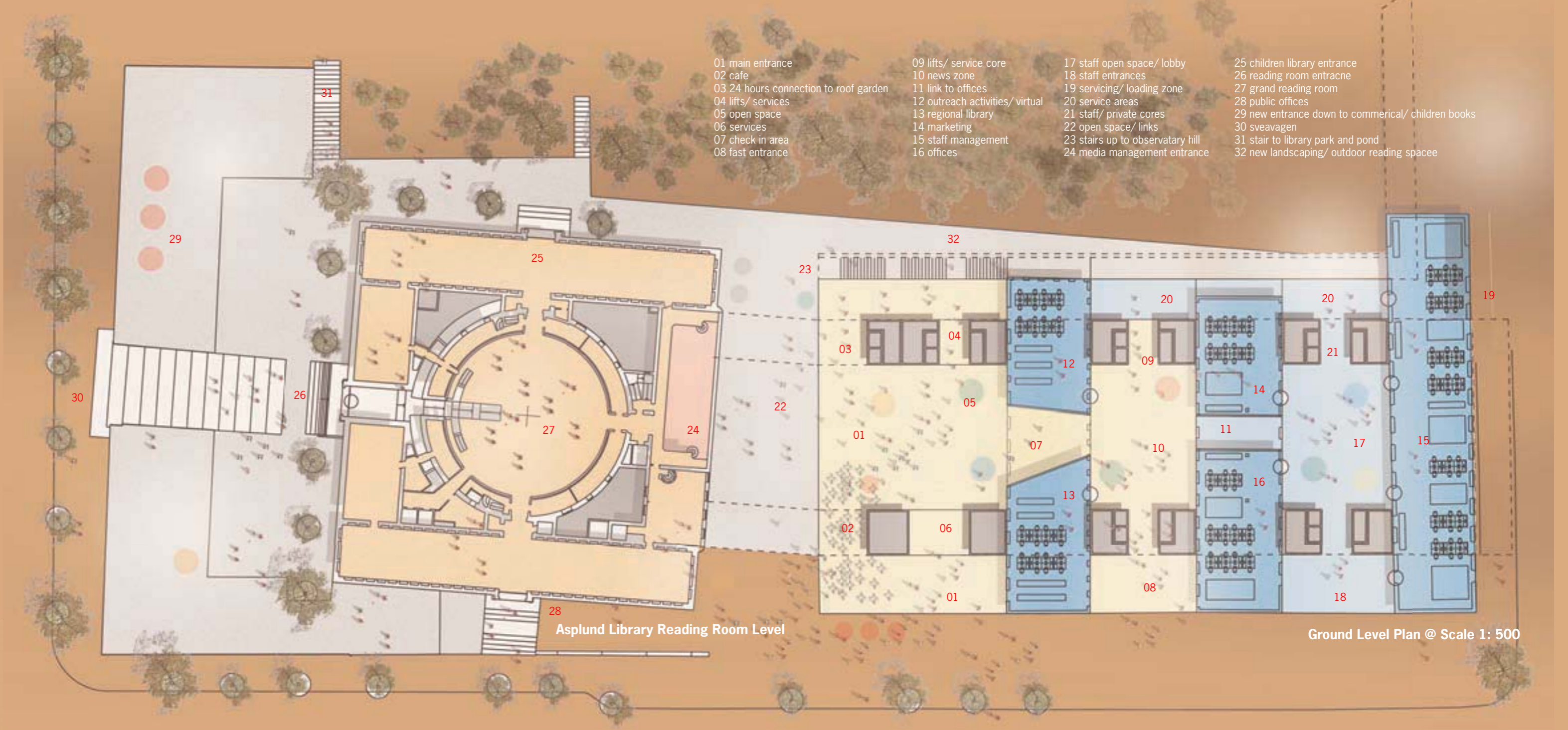
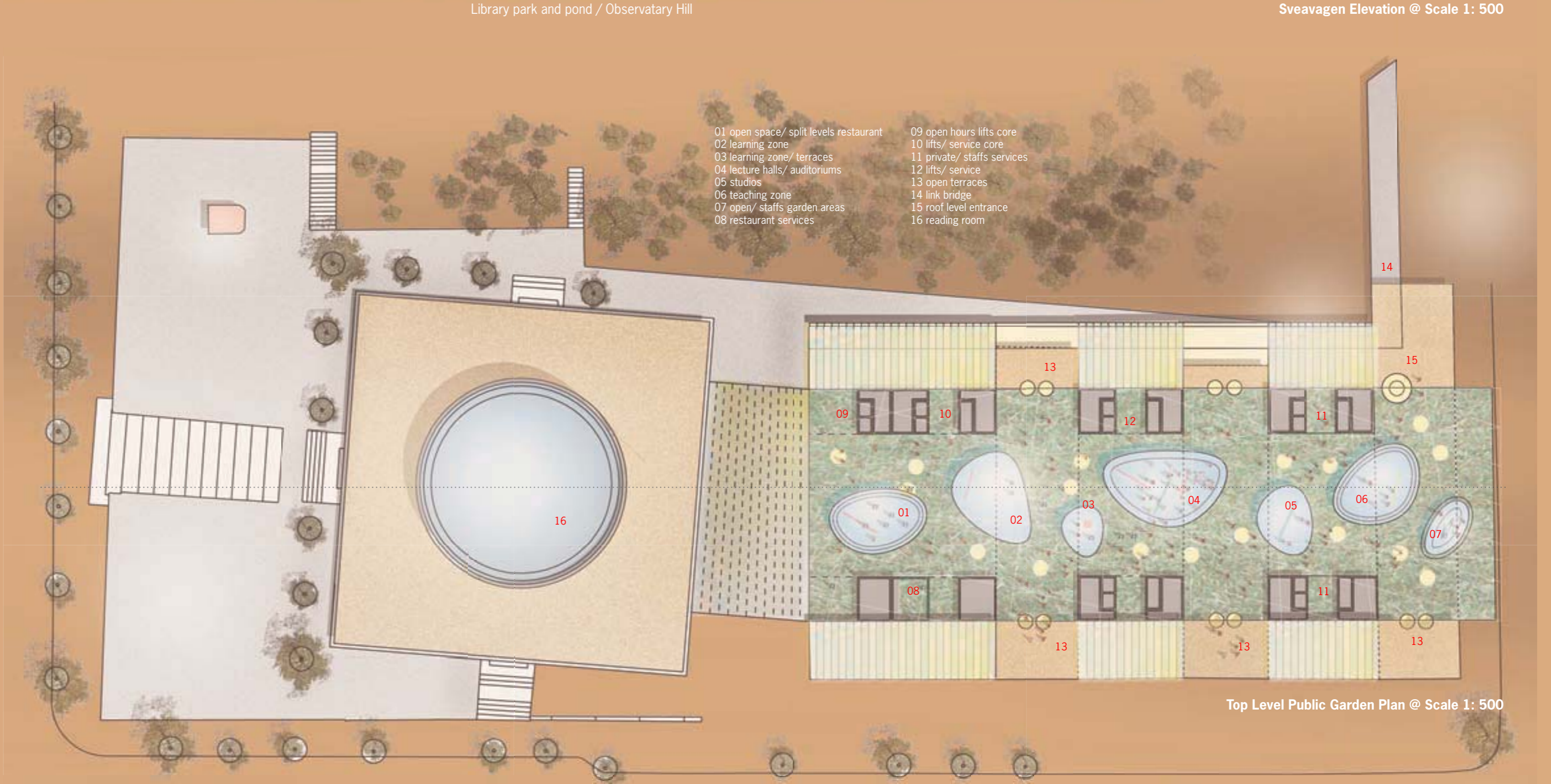
Existing Asplund's Stockholm library typical structure layout

- keep original design and structure as much as possible
- connect annexes with existing asplund library



Proposed new Stockholm library concept layout

- annexes contain majority of book collections
- infield spaces connected all blocks with new skins and study areas
- remove and replace existing cores with new structural and service cores
- new main entrance centrally located on the old spelbomskan square site
- remain open link between old square and the library park and pond
- new connection from library ground level up to observatoriekullen
- easy accessible with many entrances serve specific users



Areas MUA (m2)

Public Areas	7,000 m2
Subject Areas and Open media Collections	13,500 m2
Administration/ Staff	4,000 m2
Depository Media Management	3,500 m2
The Swedish Institute of Children's Books	2,000 m2
Total MUA	30,000 m2