

LEVEL 02 - CHILDRENS

- 01 children + young people
- 02 private reading room
- 03 childrens fiction
- 04 terrace
- 05 reading room
- 06 computers
- 07 check out + information
- 08 lounge
- 09 teen center
- 10 visual media
- 11 computer room
- 12 audio library
- 13 courtyard
- 14 plaza

LEVEL 03 - PUBLIC SPACE

- 15 fiction collection
- 16 computers
- 17 auditorium
- 18 check out + information
- 19 mixed media
- 20 reading room
- 21 cafe + restaurant
- 22 video room
- 23 lounge
- 24 rotunda connection

LEVEL 04 - ADMINISTRATION + STAFF

- 25 management
- 26 marketing
- 27 virtual
- 28 outreach activities
- 29 regional library
- 30 conference
- 31 staff lounge

LEVEL 05 - SWEDISH INSTITUTE OF CHILDRENS BOOKS + DEPOSITORY

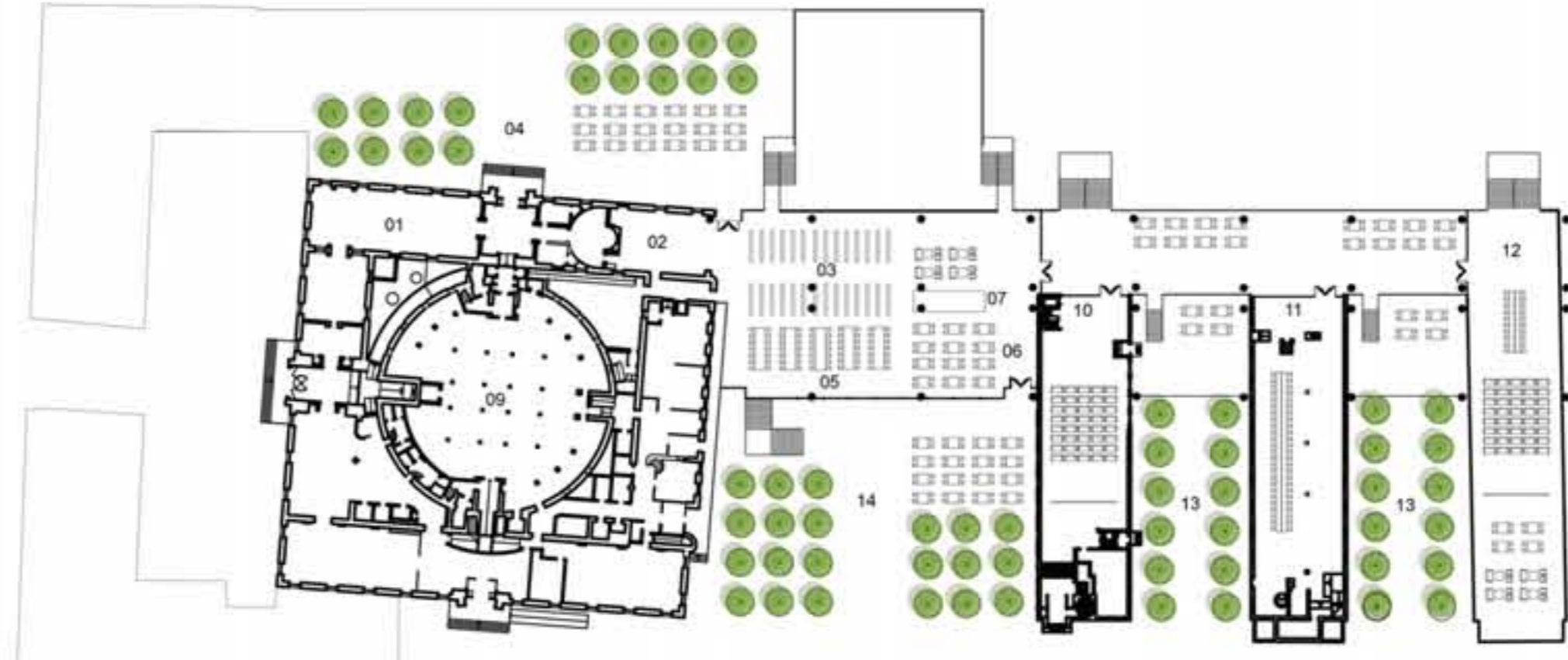
- 32 depository
- 33 sorting machines
- 34 media management
- 35 swedish institute of childrens books

LEVEL 06 - STACKS

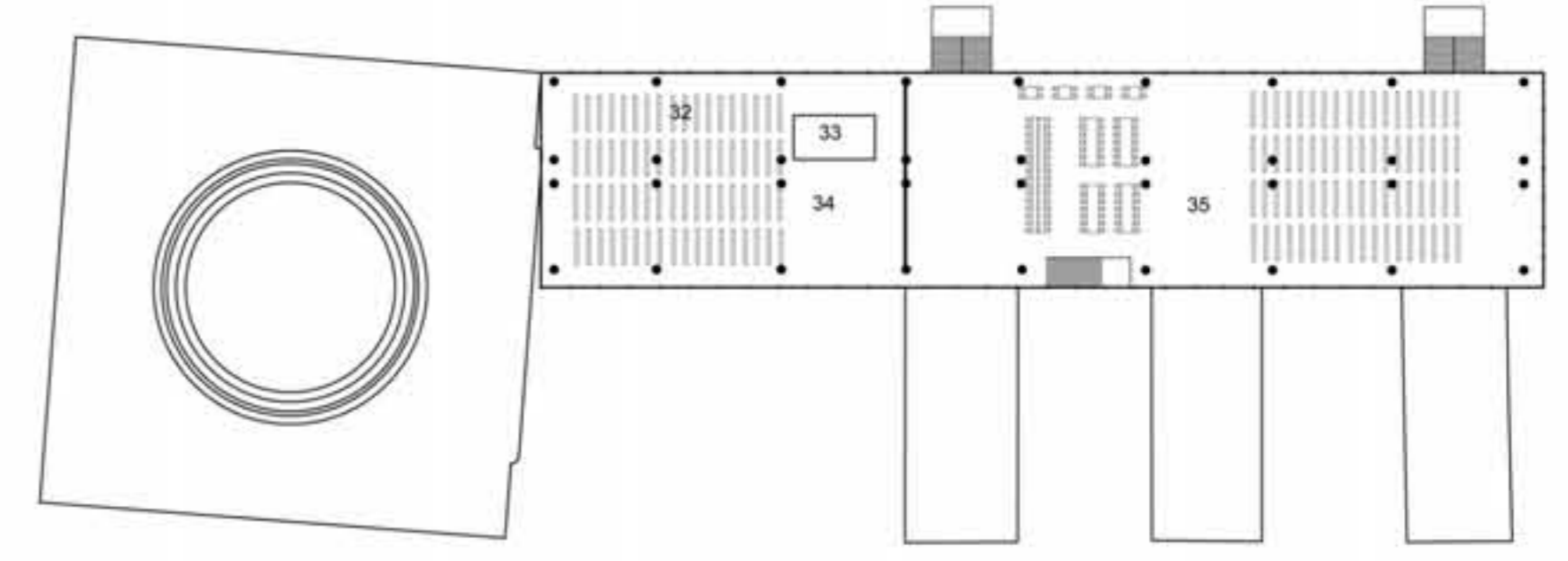
- 36 aesthetics
- 37 nature + technology
- 38 civic studies

LEVEL 07 - STACKS

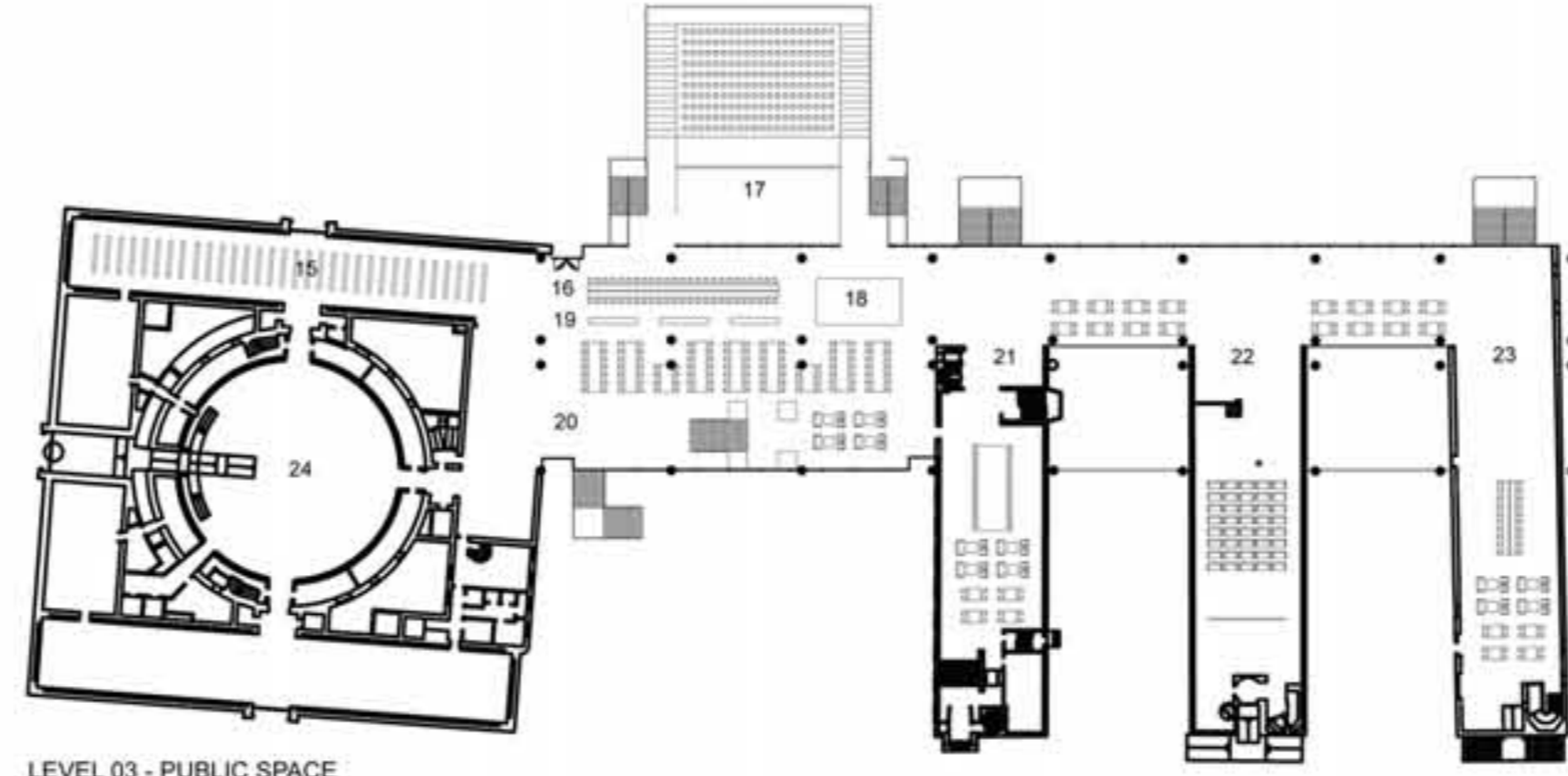
- 39 foreign languages
- 40 the arts
- 41 people + countries



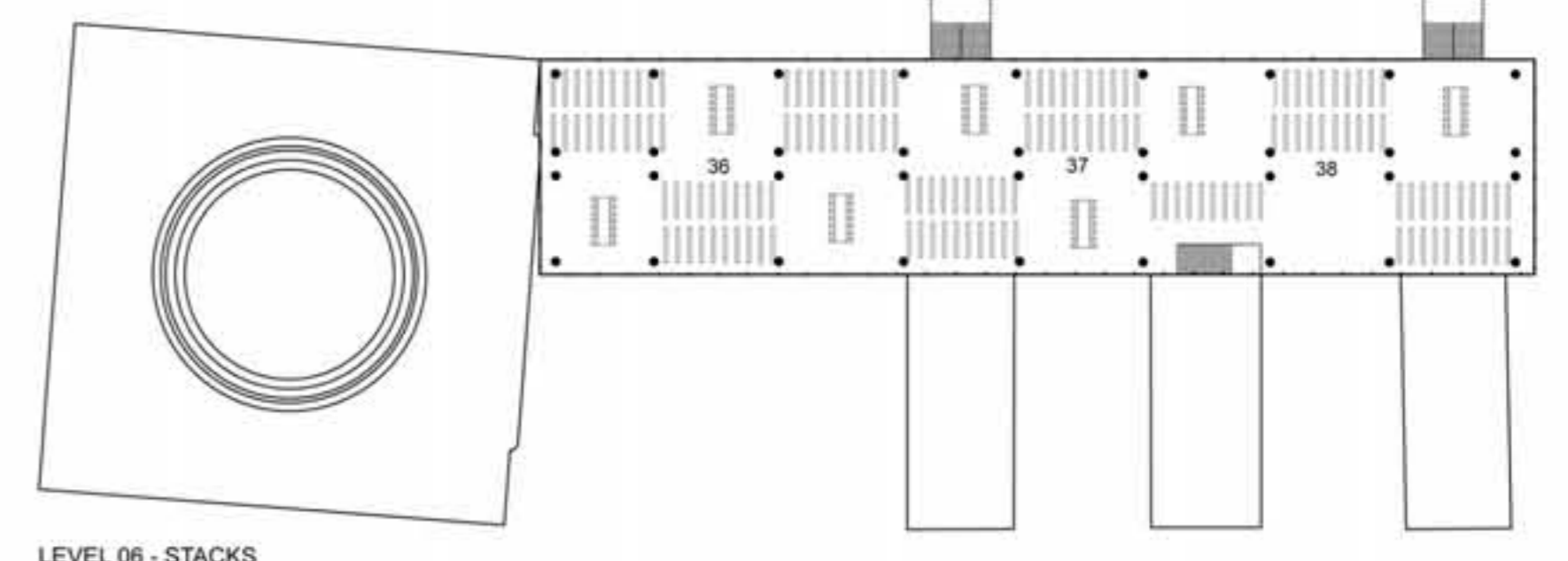
LEVEL 02 - CHILDRENS



LEVEL 05 - SWEDISH INSTITUTE OF CHILDRENS BOOKS + DEPOSITORY



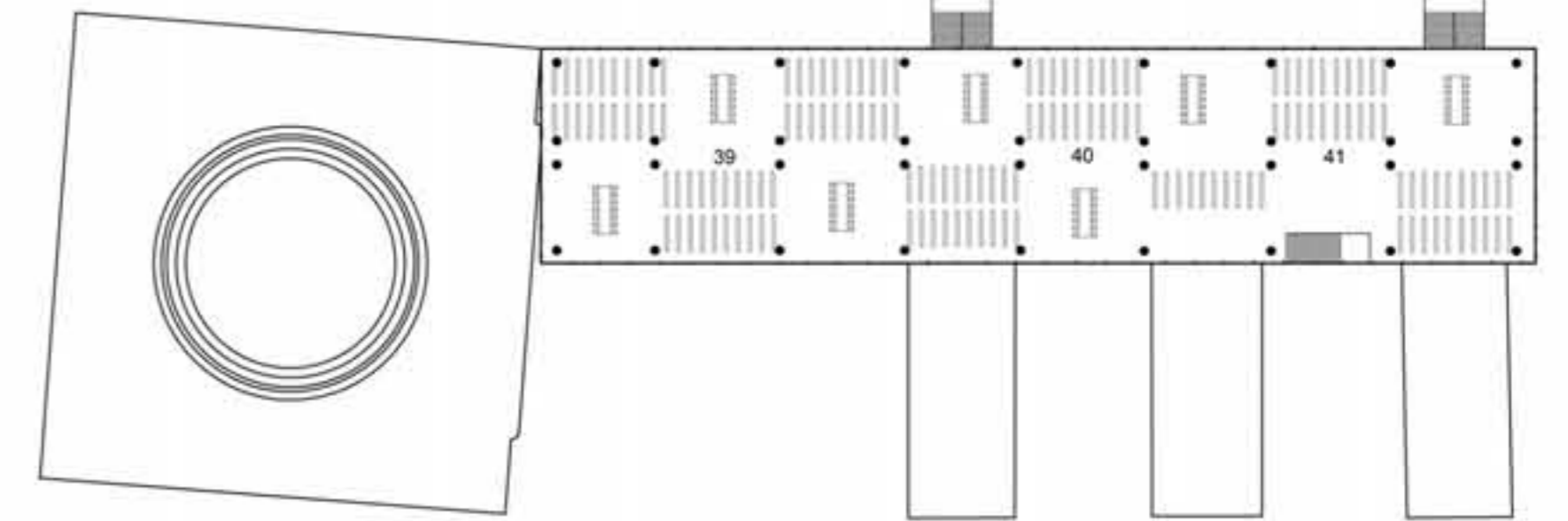
LEVEL 03 - PUBLIC SPACE



LEVEL 06 - STACKS



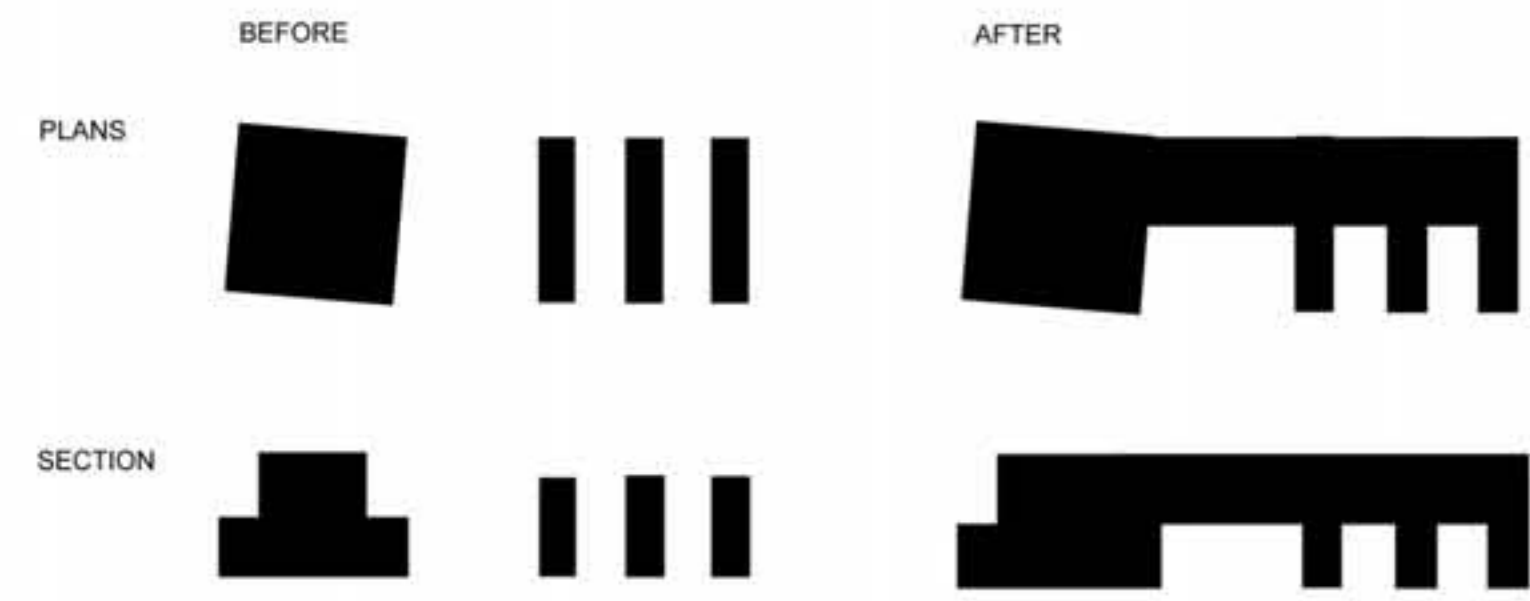
LEVEL 04 - ADMINISTRATION



LEVEL 07 - STACKS

PROGRAM

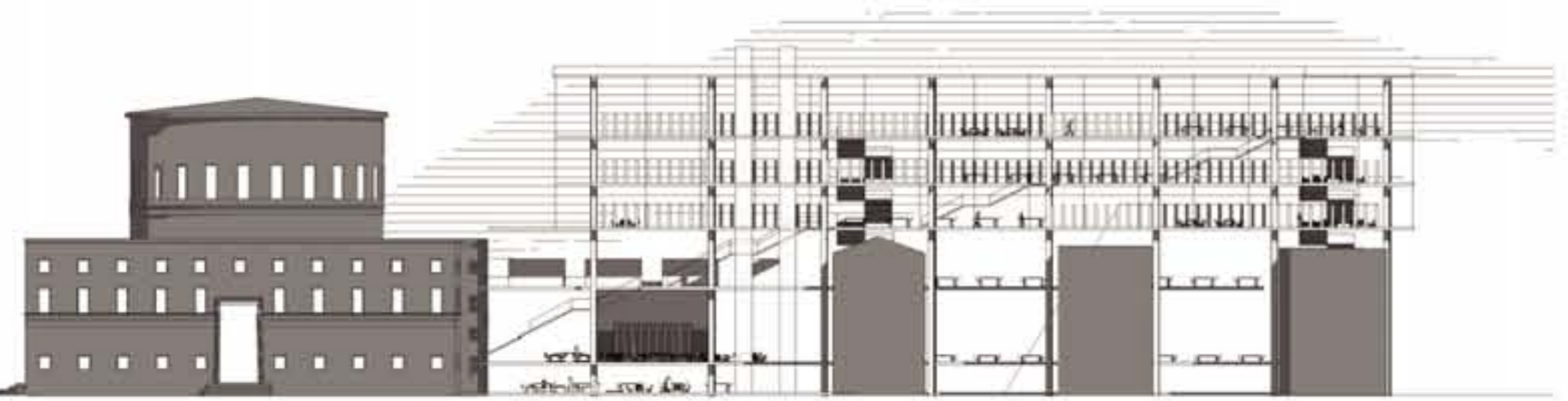
The existing program is extended out from asplund library connecting the three annexes. The childrens have access to the plaza with the main public space directly above and the most private with the stacks situated on top of the existing annexes. This creates a gradation of program with the most public functions at plaza level and most private with stacks above. The circulation connects directly to the rotunda and extends parallel to the new addition throughout both buildings uninterrupted.



CONTEXT

Maximizing most efficient use of context. The linear connection maintains all existing conditions within the site.

- 01 asplund library
- 02 annexes 1, 2, 3
- 03 plaza
- 04 observatory hill



elevation svaavagen



elevation odentagan

ASPLUND EXTENSION

The intention with the new addition was work with the existing context and create a building that did not compete with the existing asplund library. The transparent bar is elevated above the annexes and situated between the public street and observation hill maintaining the integrity of the site. This also allows for the programming to extend throughout the site interlocking the annexes with the library. The new program is located in the spaces between the annexes and the existing plaza. The building is also setback from the front of the annexes to maintain the plaza and pedestrian scale of the three annexes. The new addition is programmed in section with open floor plates for flexibility, yet the levels are divided into the public spaces located on the ground floor which has all public areas. The stacks are located in the most private area above the annexes and library administration and staff mediate both public and private areas, which is sandwiched between the public and private.

The building is elevated and completely transparent to maximize light, views of observation hill and the surrounding city. Project narrative moto and calculations and gross.