



AERIAL VIEW WINTER



Proposal brief.

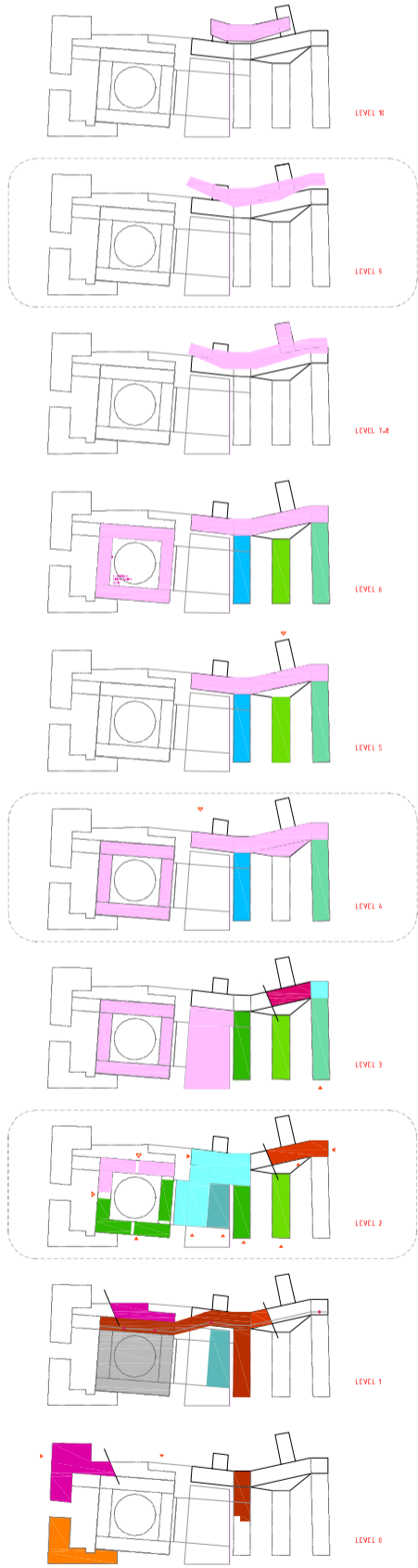
THE MAIN STRATEGY ON THE PROJECT IS TO REUSE AND RECYCLE AS MUCH EXISTING SPACE FROM THE ACTUAL BUILDINGS AS POSSIBLE, MAKING THE EXISTING BUILDINGS THE MAIN MATERIAL TO BUILD THE COMPLEX.

On that purpose the proposal maintain the three annexes, and creates a fourth Annex between them and the observatory park, which links the three existing ones and the Asplund Library among them.

In a context surrounded by so many protected buildings and the park (all of them somehow part of Asplunds original project) the aim of the proposal is to be mainly unperceived. Like a background texture on that purpose the annex 4 building tries to minimize with the amount on the observatory park folding around the observatory park mount to have the minimum volumetric presence from Odengatan. To Respect annexes height its low depth (12m), colour and transparency helps as well to fuse its presence with the park.

From a functional point of view Annex 4 will serve as an intermodal communicator for the library complex, connecting Asplunds Library with the three annexes facing Odengatan, enabling also a possible connection between the complex and the underground and city railway station on Gyldegatan and linking all with the observatory park through elevators and connection bridges. The Annex continues underground to the west to connect the complex with the bazaar buildings facing Sveavägen.

SITE PLAN _SCALE 1/1000



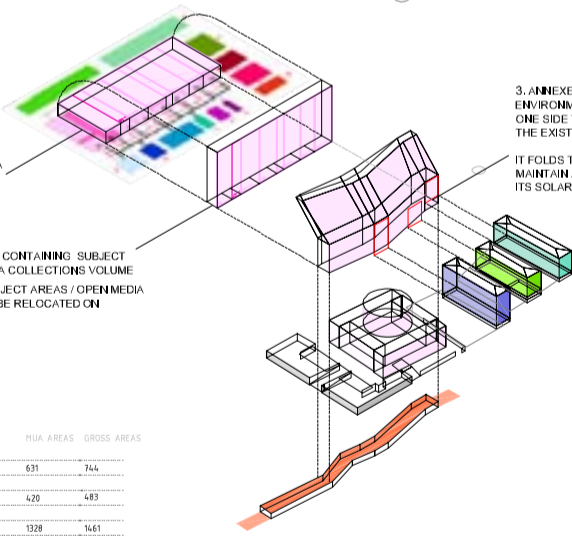
LEVEL 2 PLAN _SCALE 1/500

PROPOSAL PROGRAM TRANSLATION

1. SUBJECT AREAS / OPEN MEDIA COLLECTIONS VOLUME

2. NEW ANNEXE FOUR CONTAINING SUBJECT AREAS / OPEN MEDIA COLLECTIONS VOLUME. THE REMAINING SUBJECT AREAS / OPEN MEDIA COLLECTIONS WILL BE RELOCATED ON ASPLUNDS LIBRARY

PUBLIC AREAS	MUA AREAS	GROSS AREAS
ENTRANCES	631	744
THE NEWS ZONE	420	483
THE LEARNING ZONE	1328	1461
STUDIOS	163	173
TEACHING	200	242
LECTURE HALLS / AUDITORIUMS	500	600
SUBJECT AREAS / OPEN MEDIA COLLECTIONS		
A. FICTION	1500	1800
B. CHILDREN'S FICTION	885	1062
C. FOREIGN LANGUAGES	2032	2339
D. THE ARTS	1764	2028
E. AESTHETICS	700	805
F. CIVIC STUDIES	1700	2040
G. NATURE AND TECHNOLOGY	1400	1610
H. PEOPLE AND COUNTRIES	1675	2010
YOUNG PEOPLE	500	600
VISITED-ORIENTED ACTIVITIES / OFFICES	1537	1845
OTHER PUBLIC AREAS, TOILETS, ETC.	341	352
CAFE	300	363
RESTAURANT	672	794
EXHIBITION GALLERY	570	690



3. ANNEXE FOUR WILL BE SHAPED BY ENVIRONMENTAL AND CONTEXT CONDITIONS ON ONE SIDE THE OBSERVATORY HILL ON THE OTHER, THE EXISTING ANNEXES AND ASPLUND LIBRARY. IT FOLDS TOWARDS THE SOUTH TO IMPROVE MAINTAIN ANNEXES CLEAR OF SHADES AND IMPROVE ITS SOLAR EFFICIENCY

SOLAR PANELS ON THE ROOF WILL PROVIDE ELECTRIC POWER FOR LIGHTING ON COMMON SPACES, STAIRCASES AND LIFTS

DEPOSITORY MEDIA MANAGEMENT	MUA AREAS	GROSS AREAS
DEPOSITORIES	1207	1388
SORTING MACHINES	295	223
MEDIA MANAGEMENT	810	1044
LOGISTICS / LOADING PLATFORM	200	240
CARETAKER'S OFFICE AND PROPERTY SERVICES	526	631
ADMINISTRATION AND STAFF	MUA AREAS	GROSS AREAS
MANAGEMENT	223	267
MARKETING	308	369
VIRTUAL	235	282
OUTREACH ACTIVITIES	106	127
REGIONAL LIBRARY	287	344
STAFF AREAS	1015	1218
THE SWEDISH INSTITUTE OF CHILDREN'S BOOKS	1983	1650
TOTAL	25.547	29.824

Annexe 4.

The annexe 4 is a sort of multi-modal interchanger for the complex.

The new annexe 4 is an 8 levels building with 9000m2 of public areas and the new entrance in Odengatan with 1000m2 of the gap between the actual 14000m2 and the 24000m2 MUA required.

New entrance.

On the square between the Asplund Library and annexe one, facing Odengatan is proposed a new main entrance for the new building complex.

The position of the new entrance, centered on the new complex of buildings, propose a new entrance for the Asplund Library, opposite to the actual main entrance. This new entrance restores the original project condition of "rotunda" with a fourth axial entrance. Linking it to the present main entrance on Sveavägen will ensure that the actual one will remain as the main entrance for the building.

The new entrance is proposed as a covered plaza filled with open public spaces and mixed used to densely activate and work as an attractor from people.

Complementing the main entrance for the complex, it is proposed to left around different entrances for the annexes (the actual ones) an new ones for other uses requiring direct access from outside. (Media sorting machines, staff, maintenance, goods deliveries, etc.)

Level 10
Level 9
Level 8
Level 7
Level 6
Level 5
Level 4
Level 3
Level 2
Level 1
Level 0



CROSS SECTION : NEW ENTRANCE _SCALE 1/500



THE ENTRANCE AT ODENGATAN



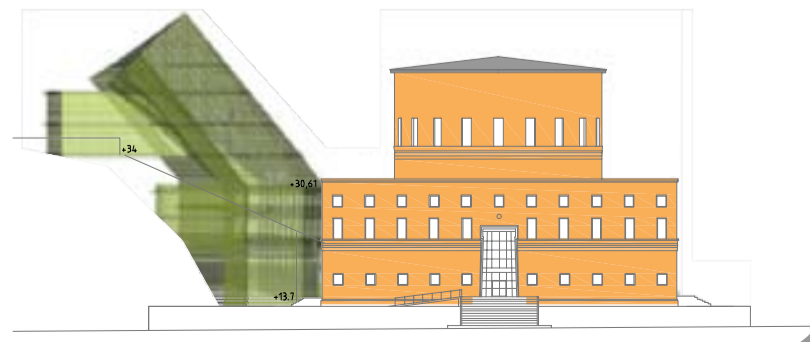
THE ENTRANCES AT THE PARK



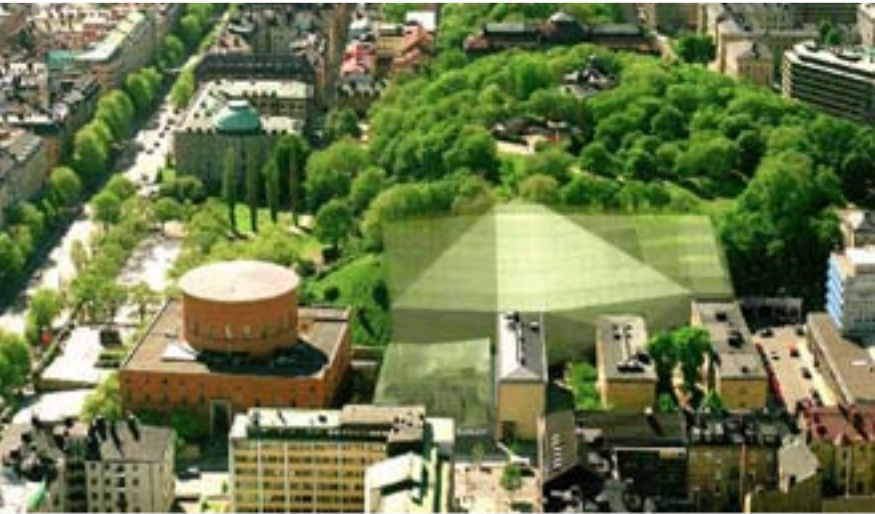
ODENGATAN VIEW



ACCESS FROM THE PARK



SVEAVÄGEN FACADE _SCALE 1/500



AERIAL VIEW SUMMER

THE ASPLUND LIBRARY

To reorganize Asplund's building the project proposes to remove on it any non public use. The concept is to increase the amount of public use of the building to make it remain as the heart of the complex. So that the majority of staff facilities or non public areas are relocated on the annexes, leaving new clean public space for public use on the library.

On access level the new entrance will complement the main existing entrance facilities.

OTHER PROPOSED MEASURES

- Clean space on the library for most popular public uses
- Condense on the existing annexes non public facilities and uses
- Create a new annex to link the whole complex of buildings among them and with its surroundings (Park, subway, station, bazaar)
- Create a new complementary entrance to the complex attractive for people on the street working together with the main Asplund's leaving it still as the main entrance.
- Improve the connection of the library complex with the park and urbanize its surroundings with furniture pathways and flat areas to make it part of the library.

FLEXIBLE SPACE

To be able to easily allow use changes and let the building easily evolve with time, the project proposes to create a spatial organization system for the whole complex able to hold different uses in similar environmental conditions.

to allow that, all the areas on the four annexes will be conditioned with a system of technical floors, infrastructured furniture (plug and play) and flexible partition systems.

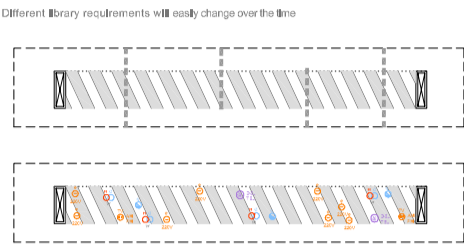
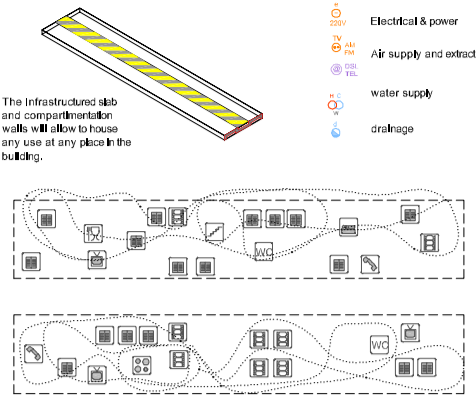
Is about to create to create 14.500m² of flexible infrastructured space able to change its conditions to hold any use required and easily permit required changes.

this system will be very useful on the process of increase public areas by reducing amount of books.

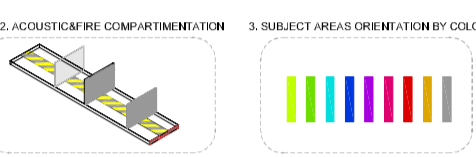
Subject areas will be show through code colours clearly presented.

INFRASTRUCTURE AND FURNITURE LAYOUT: ANNEXES 1 TO 4 THE PROPOSAL SYSTEM FOR THE NEW AREAS

1. CONSTRUCTION SYSTEM

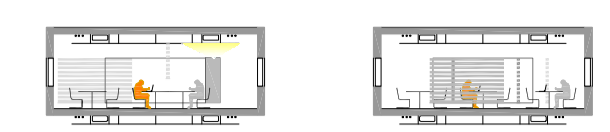


2. ACOUSTICS/FIRE COMPARTIMENTATION 3. SUBJECT AREAS ORIENTATION BY COLOUR



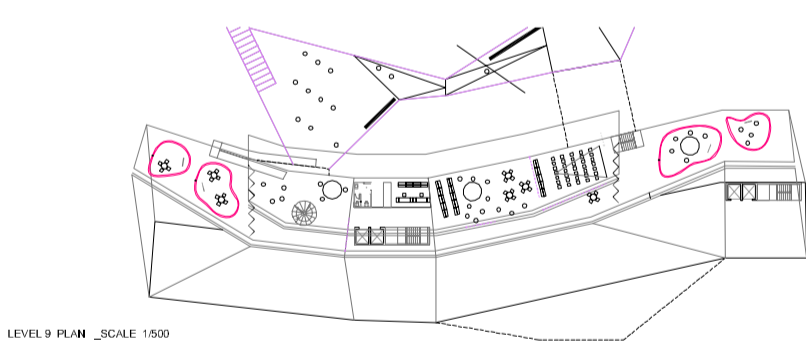
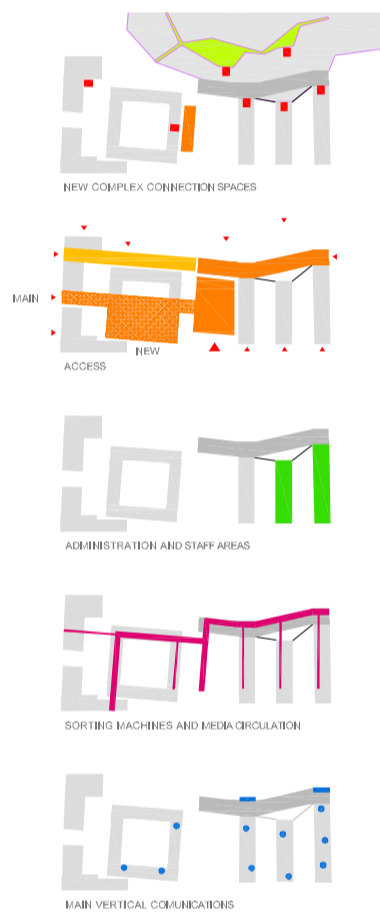
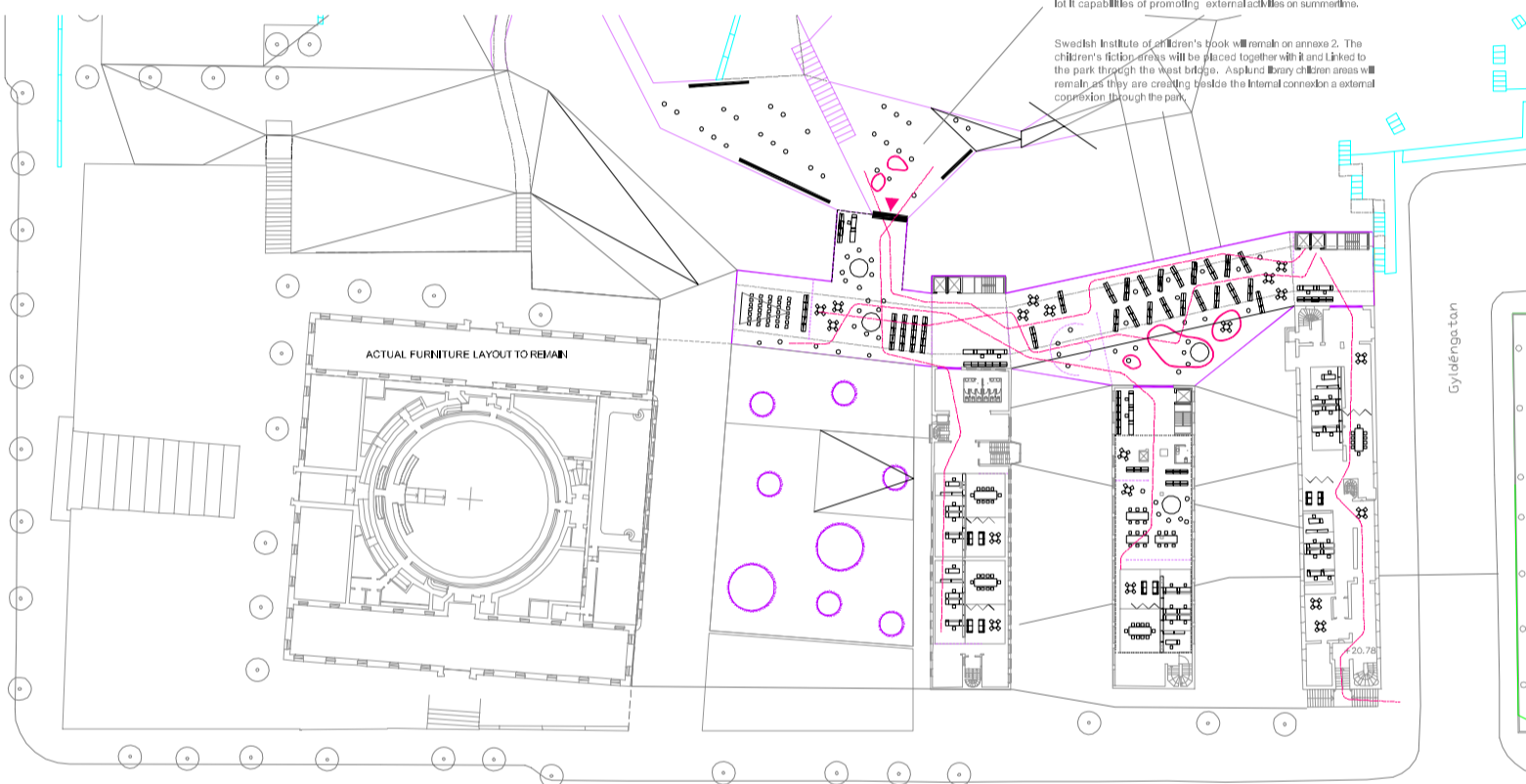
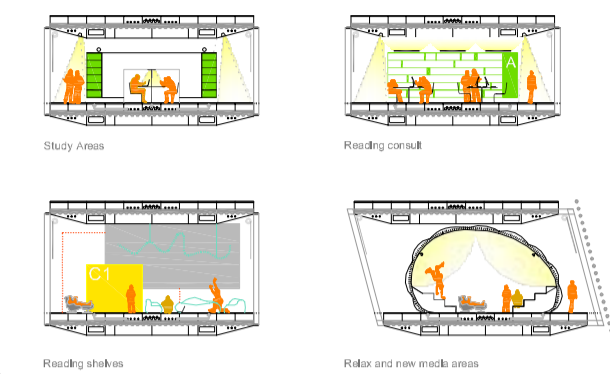
THE SAME CONTAINER DIFFERENTS CONTINENTS

4. HOLDING DIFFERENT SITUATIONS ANNEX 1, 2 AND 3

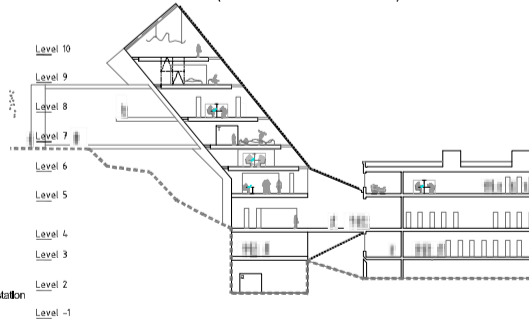


THE SAME CONTAINER DIFFERENTS CONTINENTS

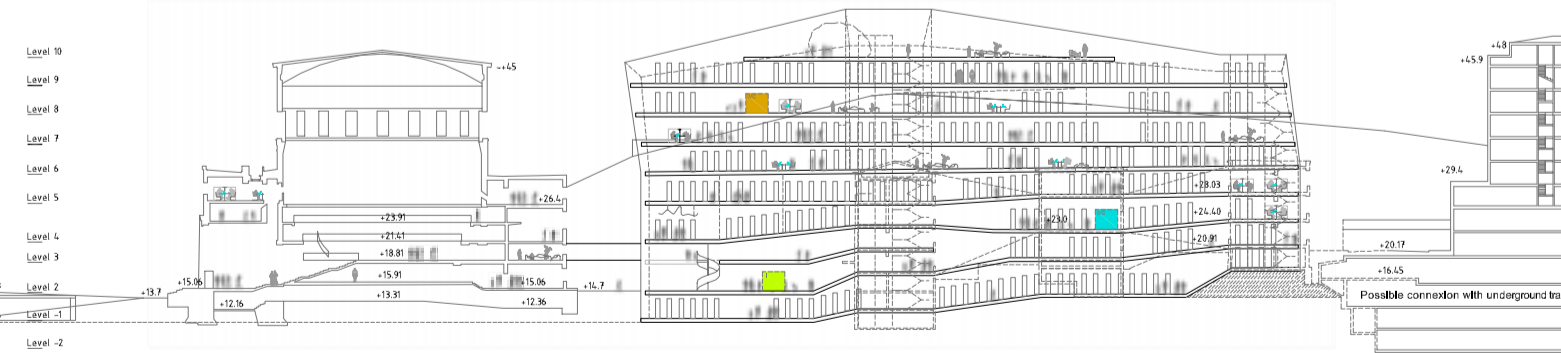
4. HOLDING DIFFERENT SITUATIONS: ANNEX 4



ANNEX FOUR LINKING EXISTING ANNEXES ONE, TWO AND THREE WITH THE PARK (SECTION THROUGH ANNEX 2)

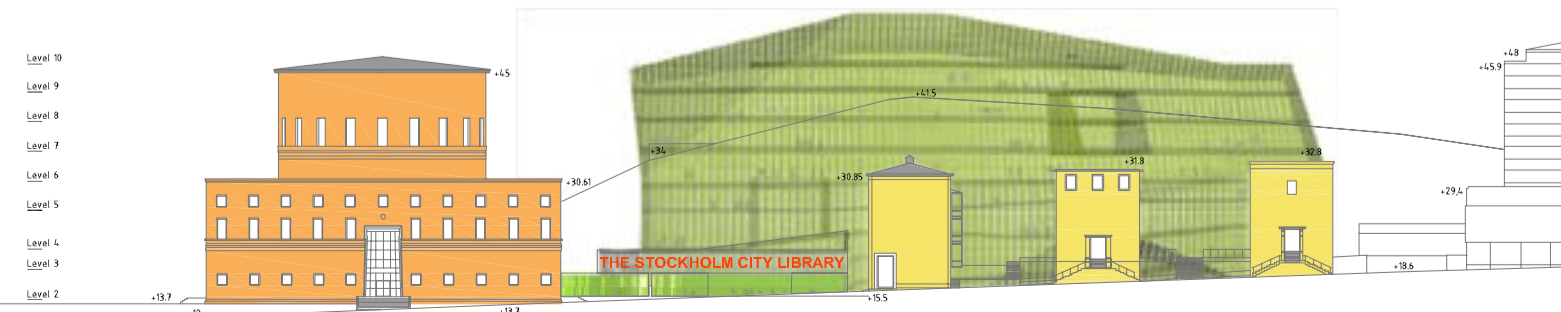
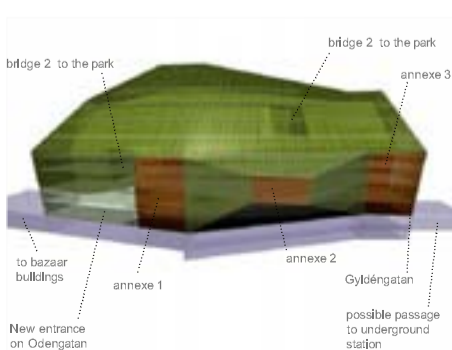


CROSS SECTION : LINK TO ANNEXE 2 _SCALE 1500



LONGITUDINAL SECTION FACING SOUTH _SCALE 1500

ANNEXE FOUR CONNECTIONS



ODENGATAN FACADE _SCALE 1500