



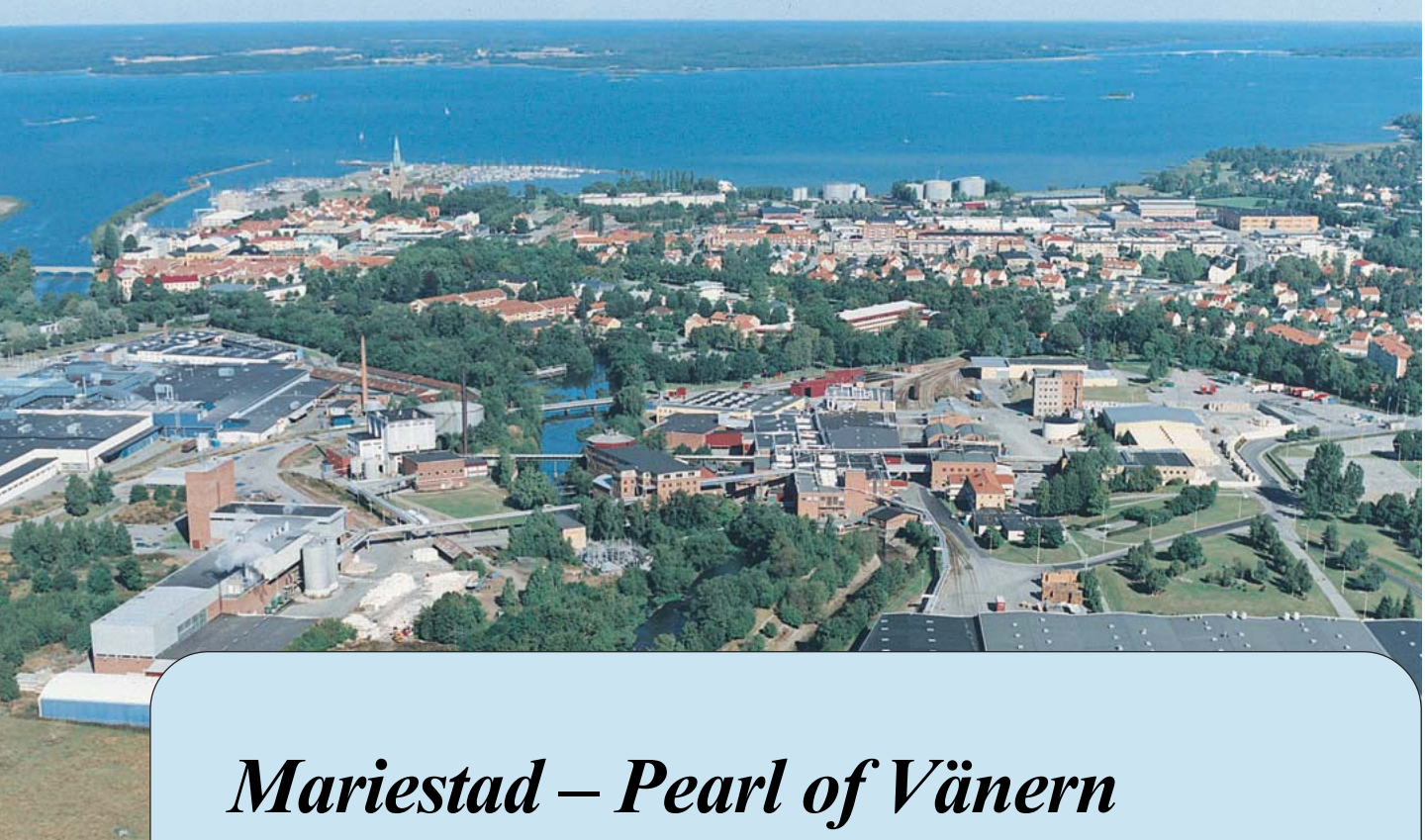
MUNICIPALITY OF
MARIESTAD

Competition Programme, June 2004



Open Competition

Development of the Harbour and Shore Area in Mariestad



Mariestad – Pearl of Vänern

The history of Mariestad really began in 1583 when Gustav Wasa's son, Duke Karl, founded the town. His consort, Maria, gave the town its name. Mariestad became an important trading town by virtue of its position where the Tidån River flows into Vänern and Duke Karl, later Karl IX, was quick to realize the value of a harbour on Vänern in stimulating trade. Activities associated with the water have been a mark of Mariestad ever since.

The cathedral, which rises impressively towards the sky in the centre of the Old Town, forms a characteristic landmark from both lake and land. The beautiful wooden buildings around the cathedral survive and the area on Näset to the north retains reminders of the time before the great fire of 1693.

Mariestad is today a developing town, containing both government and regional services including the county administration, the law courts and the county council, and also two large industrial plants, namely Metsä Tissue's paper mill and the factory of Electrolux, manufacturer of domestic appliances. Mariestad is also a trading centre for the surrounding smaller towns and countryside.

The town and the municipality are in the beautiful northern part of Västergötland, where the plain, the meadows and the fields meet the more rugged country of the Tiveden National Park. Mariestad is on a bay of Vänern, separated from the lake proper by the Torsö islands, which offer ample opportunities for swimming, sailing and other enjoyment of nature.

In summer tourists are attracted by the beautiful location and the closeness to water. Activities connected with Vänern, the islands and the Göta Canal are the biggest attraction. The first lock on the Göta Canal, one of the largest construction projects in Sweden's history, is at Sjötorp, 20 kilometres north of Mariestad. The Västergötland section of the Canal was opened in 1832. Beautiful and mysterious Lugnäsberget with its millstone caves south-west of the town also deserves mention as one of the many places to visit in the municipality.

Mariestad is easily reached on the E20 between Stockholm and Gothenburg. It has rail links with both cities. The town Mariestad has a population of 16 000 in the town itself and 24 000 in the whole municipality. Approximately 750 000 people live within just over an hour by road.

Please note!
This Competition Program is a translated version from the Swedish original. Should there, by any chance, be some points where the English version differ the Swedish version is valid.

Development of the Harbour and Waterfront

The Municipality of Mariestad invites entries for an open competition concerning the Mariestad waterfront from the marinas in the west to the circus site and Strandgården in the east.

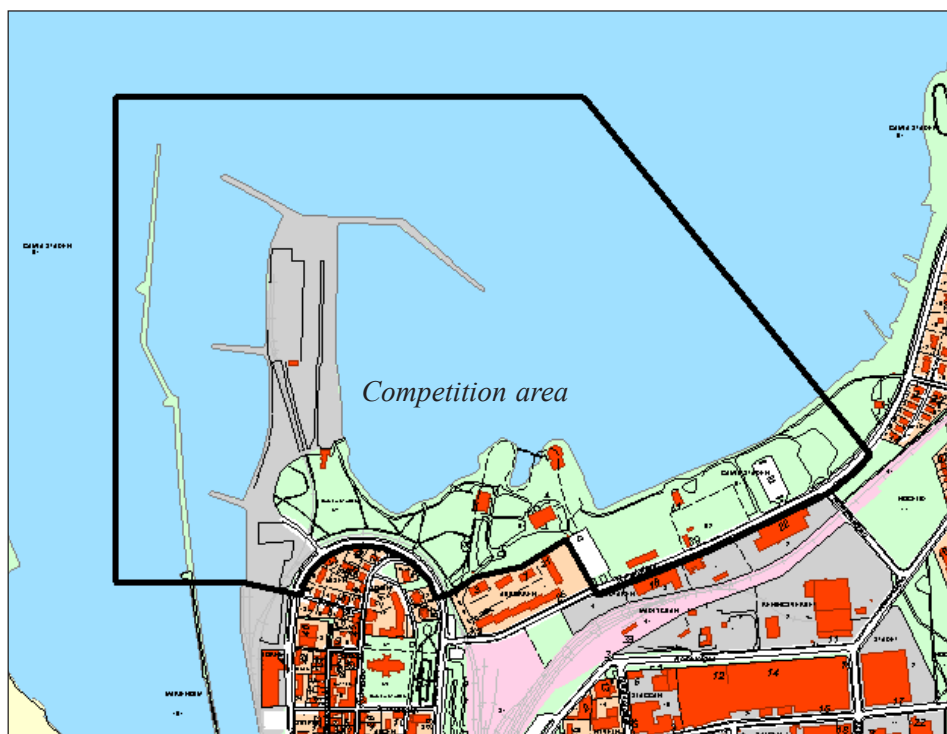
Objektive

The aim of the competition is develop the waterfront and harbour area as a whole into one Vänern's most attractive areas for recreation, accommodation, trade and other activities.

Competition

Its an open competition. The intention is to obtain ideas that are sustainable in the long term with a view to strengthening the identity and attractiveness of the town as the most beautiful lakeside town in Västra Götaland. The complexity and diversity of the competition presuppose skills in several areas of competence. The organizers consider that expertise in the following areas of knowledge ought to be possessed by the entrants.

- Urban planning/building design
- Landscape planning
- Traffic planning
- Harbours and other water planning
- Ecology
- Art and lighting



Utgivet: Stadsbyggnadskontoret, Mariestads kommun
Foton: Bo Jonsson, Jan Fleischman, Thomas Samuelsson m. fl.
Kartor: Ann-Charlotte Eriksson
Layout: Bo Jonsson
Tryck: Runit AB

Description of competition area

The location

Mariestad offers one of the most attractive locations in Central Sweden for living, work and recreation, with its long lake shores, many of them facing a westerly waterfront.

The competition area consists of a shore area 50-100 m wide, alongside Mariestadssjön, a large bay in the waterfront of Vänern. The location is outstanding, with views over the Torsö islands, Östersundet and Viknässundet. From the two sounds the lake proper can be glimpsed to the north and to the west respectively.

The competition area has enormous potential for creating a close relationship between the town and the water, emphasizing Mariestad's identity as a port.

The competition area undoubtedly represents the municipality's outstanding opportunity to make the town even more attractive for living and recreation and indirectly to stimulate new commercial activity and investment.

In several respects a structural transformation is currently taking place in the competition area. In the inner harbour, around the silo plant, a small facility whose main business is the sale of chandlery is being extended. Fitting of spares to boats will also be carried out.

Shipping traffic to the outer commercial harbour has almost come to an end. The need for a rail connection to the harbour is small or non-existent. Opening the marina to new forms of business has been discussed.

Large events are becoming less frequent at Karlsholme, an "amusement Park" on the wooded promontory, and the existing buildings are badly in need of repair or rebuilding.

Oil no longer comes to Mariestad across the lake and notice of closure of the facilities has been given. The areas around the oil storage tanks are being used for temporary activities pending a strategic plan for the future of the area.



2004: The Old Town and the Cathedral seen from the west marina.



The illustrations above show the low utilization of the shore areas. Upper: Park areas north of the Old Town. Lower: Undeveloped land east of the oil tanks.



Part of the competition area, with Karlsholme in the background to the left and the harbour pier in the foreground.

History

The majority of the competition area is on land which has been reclaimed during the last 40 years. Filling of the harbour area north of the Old Town began in the late 1950s and continued until the 1970s. The west marina was built in 1960-62. The outer commercial harbour was established between 1970 and 1975. Vanerhamn AB left Mariestad commercial harbour in 2003. The silo plant – Centralforeningen – was a wooden structure built in the inner harbour in the 1920s and survived in this form until it was demolished in 1966 and replaced by a concrete installation. The east harbour was begun in 1968 and has had roughly its present appearance since 1977.

HSB’s yellow-brick blocks of flats north of the station yard were built between 1964 and 1969. To make room for these homes an older mixed area of building – consisting of housing, a joinery works, a brewery and other small workshops – was demolished.

Work on filling in the shore area east of Karlsholme and the HSB area began after 1960 and continued into the 1970s. The oil depot was erected on the reclaimed land in the late 1960s. Until reclamation work began in this part of the town the railway ran on an embankment through Katthavet, as it was known.

Karlsholme today consists of both a natural headland, Skarnholmarna and the reclaimed land in between. Back in the nineteenth century a private park was laid out on the islets, where gatherings of the IOGT and others took place. The amusement Park was formed by a new Park association in 1928.

For a while there were cold public baths, reached by a long jetty which was roughly an extension of Nygatan. The bathhouse was demolished in 1935.

The Old Town, with the lakeside character that typifies the whole town, adjoins the competition area at Hamngatan/Nygatan. The Old Town, with the cathedral of 1593 in particular, gives a state interest to the cultural environment. Some of the oldest houses are in the northern part – Naset – of the area. See also the other competition documents.



Blocks of flats built in the 1960s.



About 1910: The Old Town and the Cathedral seen from the NW. The Old Town is in contact with the water.



*Upper: The cold baths, pulled down in 1935.
Lower: Reclamation of the outer harbour area has just begun.
Photo taken in 1960.*



In 1948 most of the competition area consisted of water and reed beds.

Present land use

The competition area includes the outer part of the breakwater, which separates the harbour entrance and the western basins from the mouth of the Tidan. It also includes the channel east of the breakwater, which leads to both inner and outer commercial harbours and to the western marina. The channel is used by what are known as Vänernmax craft (13 x 88 m), most of which load corn at the silo plant south of the competition area.

The outer harbour area currently provides places for laying up small craft for the winter and also the outer commercial harbour. The volume of goods handled in the outer commercial harbour has declined from a maximum of approx. 30 000 tonnes to about 5 000 tonnes in 2003. The enclosed area of the commercial harbour is used for storage of metal sheetings while the warehouse building is empty.

The silo plant beside the inner commercial harbour was augmented in 2000 with five metal silos and is fully used, with corn coming in by lorry or tractor and leaving it by lorry or ship.

The remains of the railway line which used to lead to both inner and outer harbours are still in the harbour area.

On the west side of the outer end of the breakwater is a small site for beaconage of channels. There is also equipment here for discharge of petroleum products reaching oil tanks in the eastern part of the competition area via both surface and underground pipelines.

North of the rounded northern end of the Old Town are the clubhouse of the yacht club (MSK), beach volleyball courts and boules courts. The green spaces in this vicinity continue east to Karlsholme People's Park and the Jubilee Theatre, a building for dancing and club activities and also a cafe with certain conference facilities.

South-east of the people's park there are parking areas and waste land. These are followed by the surviving oil tanks and discharge facilities for tanker lorries. The area around the tanks is used today for parking buses and for storage of electrical equipment of various kinds.

After this area there are open areas of waste land, including an asphalted parking area used by an adjoining office building. It is also used for temporary events such as visiting circuses. Parts of the parking area are used by skateboarders etc. At the extreme eastern end is the Circus Ground, where visiting circuses pitch their tents, park their vehicles and keep their animals for a few days. The site is bounded to the east by vegetation round Strandgården, an old residential property now used as a youth centre.

Along the shore from the harbour area in the west via Karlsholme and eastward, there is a gravel footpath/cycle track, forming part of the local "Hälsans stig" [Health Walk]. The actual shoreline consists mainly of a rough and irregular stone revetment where reeds and brushwood grow.



Shipping and Navigation workshop



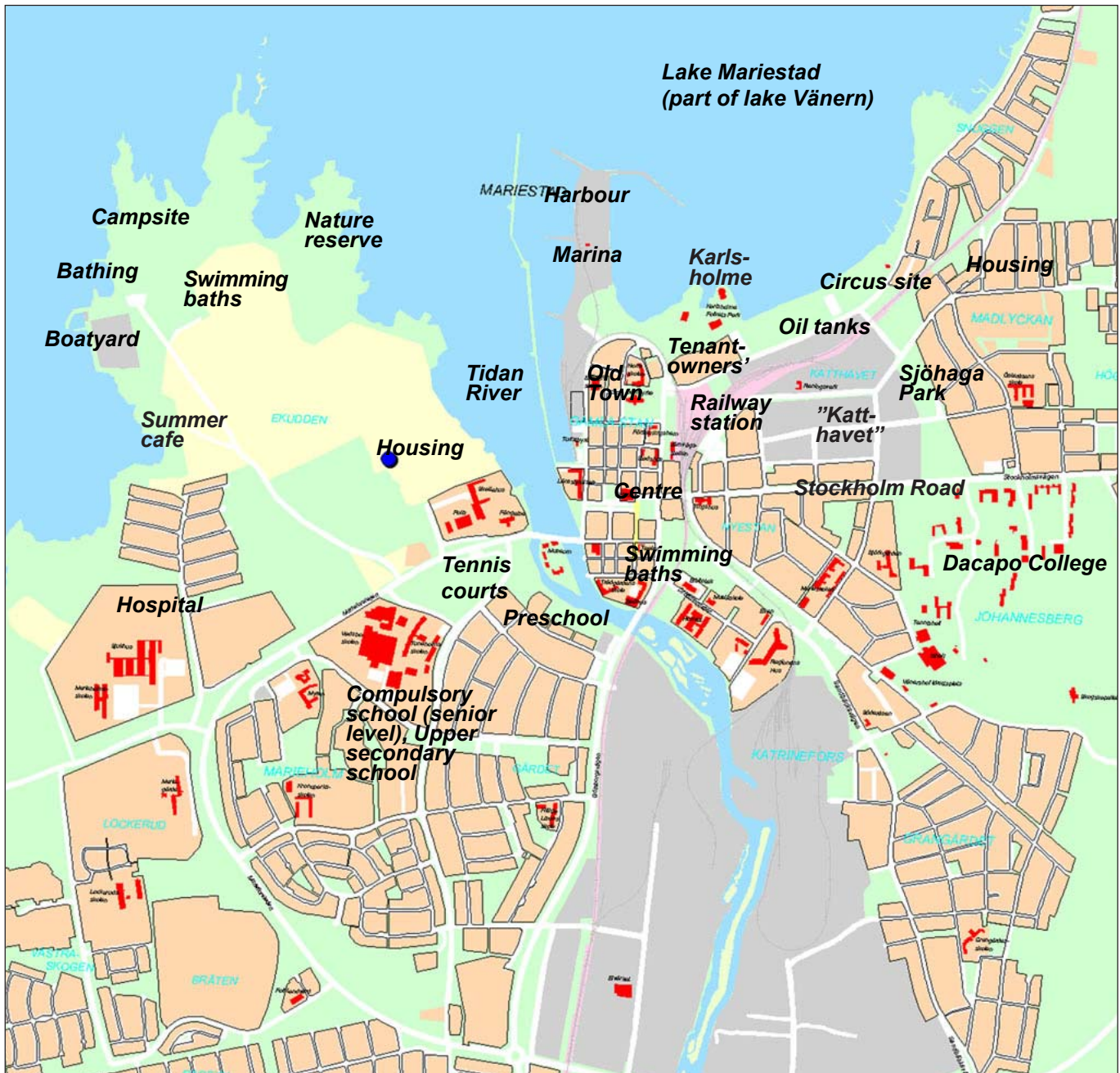
The outer harbour area



The quay along the west harbour.



MSK clubhouse.



The Jubilee Theatre by the Lake.



Waste land and oil tanks



Footpath/cycle track along the shore

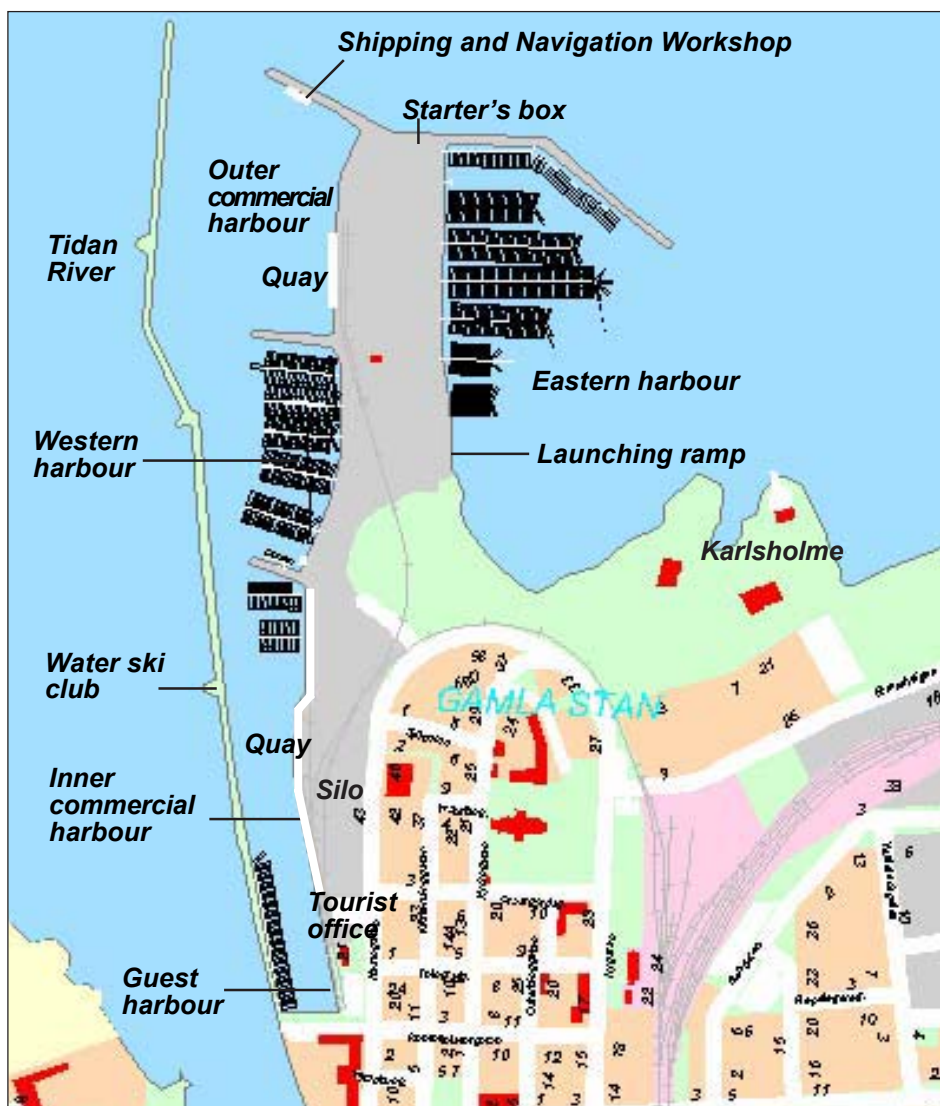
Harbours, quays, moorings etc

The west harbour, today has approx. 280 permanent moorings for boats with a draught of up to 2.5 m. The east harbour has about 470 moorings for boats with a draught of up to 2 m. The depth of water within the harbour varies. Of the total of 750 moorings some 200 were rented in 2002 by people residing outside the Municipality of Mariestad. There are some 200 winter lay-ups in the harbour area.

There is a public launching ramp for trailer-borne boats at the Mariestad Yacht Club headquarters. At the northern end there is a small starter's box for races. On the pier between the Tidan River and the harbour there is the depot of Mariestad Water Skiing Club and their skiing area is at the mouth of the river.

The outer commercial harbour has a depth of approx. 5 m and a loading dock about 80 m long.

The inner commercial harbour, opposite the silo, is used by vessels for corn transport. There is a loading dock about 360 m long. At the innermost end of the basin the permanent marina and guest moorings of the inner harbour are adjacent to the tourist office.



Harbours etc.

Vegetation

The vegetation is sparse and scanty in large parts of the competition area, which consists to a large extent of a succession of asphalt, gravel and grassy surfaces.

In some cases there is natural or planted vegetation that is worth preserving, in others the vegetation is of little value.

Along the edge of the Old Town there is an avenue of pollarded elms along Nygatan/Hamngatan which ought to be preserved.

Further north there are relatively newly planted trees on the green surfaces of the harbour area, which can be replaced.

At Karlsholme People's Park there are a number of large solitary trees that are important in creating a spacious environment and which ought to an appropriate extent to be preserved.

The oil tanks are surrounded by planted, now somewhat overgrown, poplars, which will probably appear even more out of place when the tanks are taken away.

Along Strandgatan attempts have been made to plant avenues of trees of various species (including whitebeam) and in varying relationship to the road.

Larger trees have been measured and are shown on the maps forming part of the competition papers.



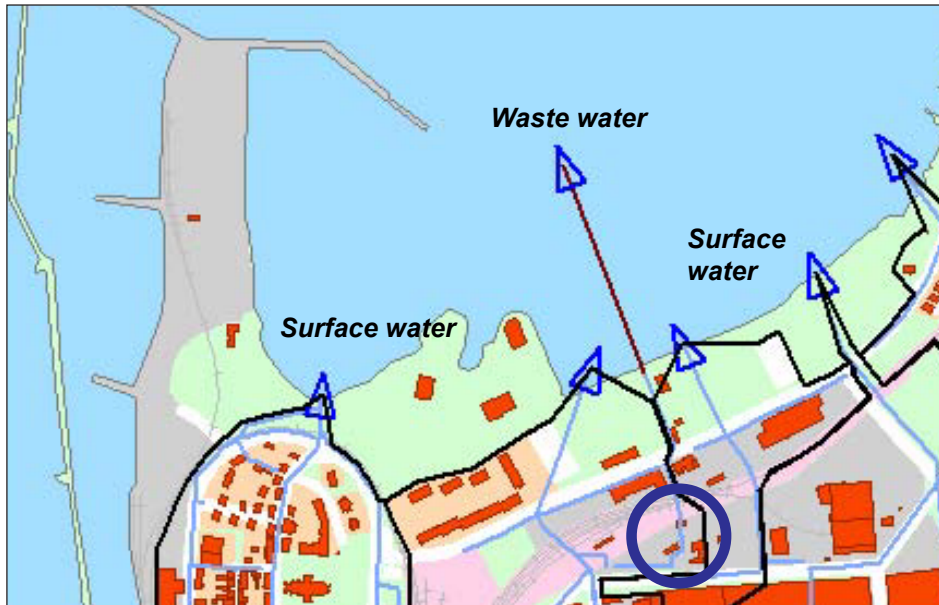
Present parkland on Karlsholme.

Water levels – lowest foundations

The water area closest to the shore is relatively shallow and the bottom is in parts stony. The depth of the water is shown in the extracts from nautical charts included in the competition papers. Because of the high water levels, buildings should not be placed lower than +46, which means that parts of the competition area will have to be filled by approx. 0.5-1 mm.

Pipes etc

Within the competition area there are several discharge pipes for surface water and also a discharge pipe for cleaned waste water from the town's sewage plant nearby.



Discharge points for surface water and waste water. The sewage plant is marked with a blue circle.

The municipality plans to improve the catchment and cleaning of surface water before it reaches Vänern. The map above shows four discharge points for surface water within the competition area. Surface water can be received within the water and shore area and further up in the system. The competition proposals should basically illustrate how surface water is to be collected and used to become a resource in the water and shore area. This may for example be done by dealing with surface water in open systems. Use of surface water in open systems may include ponds, park and garden installations, watering and recirculation of surface water for different purposes.

The waste water pipe may be extended to a discharge point at a greater distance from the shore if this is desirable from the point of view of water quality.

Proposals for land use within the eastern part of the shore area must take into account the distance from the sewage treatment plant.

Traffic and parking

The competition area is reached by vehicles from Hamngatan/Nygatan and Strandvägen. Both Hamngatan and Nygatan lead traffic through the relatively crowded centre of the town and are therefore not ideal as approach routes for more frequent or heavy traffic.

Strandvägen is today used for heavy loads to the harbour area, where it connects with Stockholmsvägen via Katthavsvägen and Mariagatan in the east, which are wider and pass through less sensitive industrial areas. Strandvägen is in relatively poor condition and needs repair. Parking within the competition area should comply with the municipal parking norms. See other competition documents.

Existing industrial tracks to the inner harbour will be removed. The need for tracks to the outer harbour depends on the future use. The competition entries should show alternative uses for this area, in which case removal of the tracks may also be considered.



The pop singer Thomas Ledin visits Karlsholme.

Present recreational activities

The hardstanding area of the harbour quay is used largely for activities related to the marina. The area is used only to a small extent for walking and other outdoor activities.

The beach volley and boules courts north of the Old Town are open to the public and are used more or less sporadically throughout the summer.

Karlsholme People's Park Association rents the park and three buildings from the Municipality of Mariestad. The Association is a very vigorous one and has activities of some sort of its own or by sub-letting virtually every day. Among these activities may be mentioned approximately five major people's park events outdoors during the summer and a couple of days of fairs. Indoors there are dance courses, bingo, other sessions activities, conferences, study groups, auctions, weddings and other private parties. In the newer west building there is also in addition to the conference activities all year round a summer restaurant between May and August. Generally 3-5 major events per year take place during the summer. Artistes such as Carola, Ulf Lundell, Thomas Ledin etc. have attracted audiences of up to 3 000, depending on the weather.

The total number of visitors to the park area is large and is expected to reach 250 000 per year. A large number of these visitors are to events free of charge such as auctions, markets, car exhibitions etc.

There is no swimming done in the competition area, because the water has so far not been considered suitable for this purpose because of the surface and waste water discharges.

Competition task

Objektive

The objective of the competition is to provide ideas and to find solutions on how the different parts of the area can be used in future and to design principles for the basic of the area as a whole. The result of the competition is intended to be used as a basis for the long-term general planning of the municipality for the urban area and also for the imminent development of the harbour and waterfront. The proposals must be sustainable in the long term.

The task

Competitors are to present a total concept for the development of the harbour and waterfront area based on the programme's intention of bringing the town closer to the water. *Ideas, solutions and principles for designing the area* must use, improve and develop the unique position of the site and strengthen contact between the water and the town in general. Activities may be moved from their present positions if this is to the benefit of the total solution. It should be possible to implement the development concept in stages, probably over a relatively long period, which means that it should be possible to make adjustments to the concept without losing the whole.

The competition task includes making proposals for how the following goals and functions should be situated, interact and be formed with relation to the qualities and limitations of the area. Should competitors make additional suggestions these may be considered.

General sub-goals

- The proposed use must add *new activities and qualities* to the town.
- An interesting and eventful *shore walk* should be created throughout the competition area for both visitors and the town's own residents.
- An exciting and interesting jetty should be created, giving room for *small-scale trading, eating places* (possibly connected with fishing in Vänern) and other activities.

Design

- The competition area should as a whole and in its parts become an area with *high architectural quality* with regard to building, parks, other facilities and places.
- In the immediate vicinity of the Old Town special attention should be paid to the *historical, cultural and aesthetic aspects* of this part of the town. See other competition documents.
- *The view* from the town towards the water must be made use of at appropriate points, for example the views towards the lake from Nygatan and from Stockholmsvägen across Sjöhaga Park should be taken into account.
- *The shoreline may be moved* or extended by additional reclamation or excavation if this adds substantial additional value.

Boats and marinas

- The competition area should contain approx. 1 000 moorage for small boats, distributed approx. 20 % -6 m, 60 % 6-10 m and 20 % 10-14 m.
- The proposals should indicate a suitable area for development of a *marina* with a launching ramp, room for a mobile launching crane, mast crane, mast storage, washing area and other boat service.
- *Winter lay-ups* for about 25 large pleasure craft (10-14 m) ought to be provided adjacent to the launching site, unless this is unfeasible in relation to the whole development.

Nature and parks

- The *amount of parkland* may be increased and ought to demonstrate *ecological* thinking.
- *Sjöhaga Park* should be extended to the waterline through the eastern part of the competition area.
- The combination of *attractive park and reception of surface water* should be particularly studied.

Recreational, tourist, conference and event centre

- The municipality intends to strengthen its role as *a centre for the tourist industry* in the provinces around Vänern and Vättern.
- A coherent *event area* should be created, with premises for conferences and trade fairs, where activities currently taking place in the Karlsholme Park can also be carried on. The area should contain *flexible accommodation* with approx. 700 seats and *a hotel* for about 100 guests, spa activities etc. Detailed design of these buildings is not part of the competition task.
Karlsholme Park's present position and buildings do not need to be decisive if a different location gives *better utilization* of the competition area as a whole.
- The municipality is working for better *contact with the archipelago in Lake Vänern*. For this purpose an area should be reserved for charter craft for passengers and trolling fishing, boat hire, information facilities for island tourism and the Djurö National Park etc.
- The municipality is working for improvement of water quality in the area. A suitable place for *bathing close to the town* with adjoining areas for relaxing should be suggested.

Activities

- The possibility of offering attractive *workplaces for non-disruptive* activities should be illustrated, particularly in places where housing is not possible because of the closeness to the sewage works.
- *The oil depot with its pipe systems* should be disregarded. The Tanks may be used for new purposes if this is found appropriate.
- *Trade* which derives an advantage from being close to the water should be given space in appropriate locations.

Housing

- The competition area should contain approx. *150 dwellings* in attractive locations. The distance from the municipal sewage plant should be borne in mind when siting these.

Streets, pipelines, navigation channels

- *Strandvägen* should be shown, suitably designed to constitute the main feeder for the whole harbour area.
- Parking should be shown in accordance with municipal parking norms. See other competition documents.
- Reception of *surface water* in a natural manner, preferably with a biotopic approach, should be shown.
- Attention to major *pipelines* as shown in the competition documents will be considered.
- The present *channel* should continue to permit ship transport to the inner commercial harbour.

Presentation

The competition proposals should be set out on a maximum of four A1 charts in portrait format containing at least the following:

- Plan to a scale of 1:2000
- Plans of sub-areas to a scale of 1:400
- Possible rough sketches of buildings to a scale of 1:400.
- Relevant sections.
- Views and other illustrations describing core ideas of which at least one is a general perspective of the whole competition area seen from Mariestadssjön and showing the connection of the proposal to the existing town. The general perspective may be divided up for space reasons.
- Descriptive text explaining the total concept and structuring the proposal according to principles for use within the sub-areas.
- CD with copies of charts. The charts should be in pdf-file format and possible to use for publication both in printed form and on the web.

Basis for judging

The proposals will be judged on the basis of the municipality's primary objective of creating an attractive connection between town and water and in this context bringing Mariestad new activities and qualities.

- The contents of the main concept and interaction with the different uses.
- Effect of the concept on the townscape and town planning in adjoining areas of the town such as traffic and parking solutions.
- Social aspects in the form of access, enjoyability, human scale and security.
- Lasting values and maintenance.
- Feasibility of implementation relative to the size of the town.

Any models will be detached from documents submitted before the jury begins work and will not therefore constitute a basis for evaluation.

Competition rules

Who may take part?

The competition is open to all. Text should be in Swedish. Notice of the competition will be given in August 2004.

Jury

The jury consists of the following:

Sten Bergheden (Conservative)	Leading councillor (chairman of jury)
Ulla Göthager (Social Democrat)	Opposition councillor
Göte Andersson (Christian Democrat)	Chair of planning committee
Björn Berggren (Mariestad Party)	Member of municipal executive office
Stig H. Johansson (Liberal)	Member of municipal executive office
Jens Söder (Social Democrat)	Member of municipal executive office
Bo Jonsson	Planning architect, architect SAR/MSA
Ola Kjellander	Architect SAR/MSA
Agneta Persson	Landscape architect LAR/MSA

Secretary of the jury:

Chief planning officer Thomas Johansson
Tel.: +46 501-70 50 21
Fax: +46 501-70 50 29
Mail: thomas.johansson@mariestad.se

The jury will be able to co-opt a technical committee to assist in judging. The technical committee consists of the following:

Lennart Bergqvist	Municipal chief executive officer (chairman)
Thomas Johansson	Chief Planning officer
Leif Cederman	Chief Building officer
Clas-Göran Crommert	Chief Environmental control officer
Gunilla Broberg	Chief Leisure services and culture officer
Ulf Wallgren	Chief Infrastructure officer
Anders Dagsberg	Chief Parks officer

Competition administrator:

Ann-Charlotte Eriksson

Address:

Stadsbyggnadskontoret
Esplanaden 5
Mariestadskommun
542 86 Mariestad

Programme documents

In addition to this programme the competition documents consist of:

- Tourist and information map
- Digital base map with boundary of competition area, stands of trees, major pipelines etc.
- Statement of values concerning area of state interest (Old Town)
- Extract from nautical chart
- Digital aerial photos
- Parking norms
- General plan 2003

Distribution of programme documents

The programme documents will be supplied by the competition administrator for a charge of SEK 500.

The fee should be paid into the Municipality of Mariestad postal giro account no. 4795803-8. Mark the stub "Arkitektävling 2004-001". (If paying by internet use postal giro account no. 21340-5. Then paying from other countries than Sweden use the IBAN no. SE7295000099602600213405 and BIC NDEASESS).

The fee is not returnable. Copy, complete and submit the enclosed application form together with the post office receipt for the fee paid to the competition administrator.

Submission of entry

The competition proposals must be submitted to the competition organizer by post or messenger not later than 1 December 2004. The proposals may be delivered direct to the competition organizer on that day not later than 5 pm.

Address: Mariestads kommun
Stadsbyggnadskontoret
Att: Ann-Charlotte Eriksson
Esplanaden 5
542 86 Mariestad

Tel. +46 501-70 60 05
Fax: +46 501-70 60 09
E-mail: ann-charlotte.eriksson@mariestad.se

The envelope should be marked "Mariestads vattenfront". A copy of the receipt for the package must be sent to the competition administrator, marked with the motto and with a contact who can receive any information without loss of anonymity. The phone number of this contact should be given.

The competition proposal should be accompanied by an opaque sealed envelope, marked "namnsedel", and marked with the motto of the proposal on the outside. The envelope must contain the enclosed name slip form completed by the person submitting the proposal and the copyright owner. Unless otherwise indicated, the proposal will be returned to this address.

Insurance

To cover any costs in connection with reprinting or new production of the proposals, these will be insured against damage to an amount of SEK 5 000 per proposal.

Dates

The competition will be announced in "Arkitekten" and start on 16 August 2004. Questions should be submitted not later than 1 October 2004.

Competition replies will be dispatched not later than 15 October 2004.

The proposals must be submitted anonymously as above not later than 1 December 2004.

The jury work is expected to be completed by 1 March 2005.

Prize amount

An amount of SEK 750 000 is at the jury's disposal for prize money and purchases. A first prize of at least SEK 250 000 will be awarded. The lowest reward will be not less than SEK 30 000.

Judging and exhibition

It is expected that judging will be completed by the middle of February 2005. The result will be announced to competitors personally and to the public in "Arkitekten" and the local press. The verdict of the competition jury together with any appendices will be sent to all entrants not later than three weeks after the result of the competition has been made public. The competition proposals will be exhibited to the public by the organizer at the time of judging.

Commissions after the competition

Commissions after the competition will chiefly concern planning and quality control of the first implementation stage and will be of the extent required in order to allow the main concepts of the competition proposal to be asserted in design and implementation.

If the copyright owner of the winning proposal is not considered by the organizer and the competition committee of the Swedish Association of Architects to have the necessary experience and resources to handle the project, this will be awarded to him in consultation with an experienced expert nominated after consultation between the copyright owner himself and the organizer.

If negotiations on an commissions have not been commenced with the winner within a period of two years after the conclusion of the competition, the winner will receive an extra payment equivalent to the prize.

If the organizer finds reason to disregard the jury's recommendation, consultation will take place with the Swedish Association of Architects.

Publication

The organizer and the Swedish Association of Architects have the right to publish the proposals. All publication will include a statement of the proposer's name.

Right of ownership and utilization

The organizer holds ownership of the submitted material. However the proposer has the right to replace the original proposals with a copy.

The author has copyright and retains right of utilization of his proposals. The organizer has the right to use the total result of the competition in further work on the shore area.

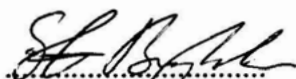
Direct utilization of proposals, in full or in substantial parts, is possible only after agreement between the proposer and the organizer.

Approval of the competition programme

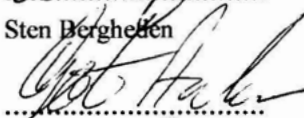
The programme has been drawn up in accordance with "Regler för svenska tävlingar inom arkitekternas, ingenjörernas, och konstnärernas verksamhetsfält 1998" [Rules for Swedish competitions in the areas of activity of architects, engineers and artists, 1998]. Rules and instructions apply unless the programme states otherwise.

Programme and appendices have been approved by members of the jury who are responsible for the conduct of the competition. The programme has been examined from the point of view of competition conditions by the Swedish Association of Architects.

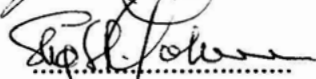
Mariestad i juni 2004



Sten Berghellen



Göte Andersson



Stig H Johansson



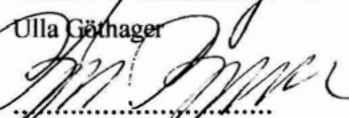
Ola Kjellander



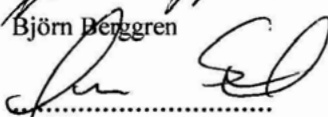
Bo Jonsson



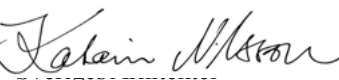
Ulla Gönthager



Björn Berggren



Jens Söder



Copy the page, complete and send in.

Application

Contact person:

Address:

.....

Phone:

The post office receipt for payment of the fee should be enclosed with the application.

Name slip for motto

Proposer:

.....

.....

Copyright owner:

.....

Address:

.....

Phone:

The envelope should be marked "Namnsedel" and motto.



MUNICIPALITY OF
MARIESTAD

Stadsbyggnadskontoret
Esplanaden 5
542 86 Mariestad
Tel: +46 501 - 75 50 00