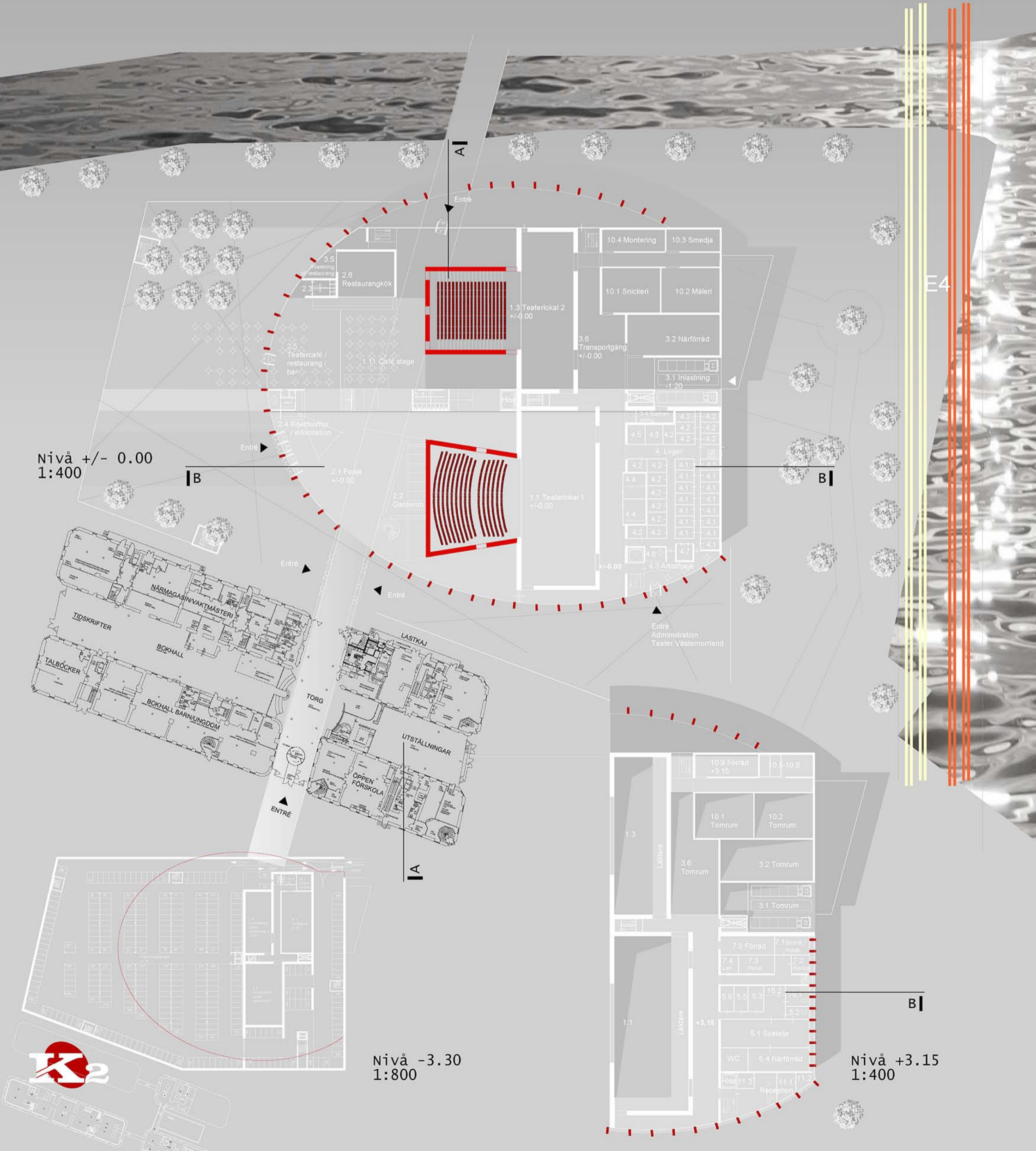


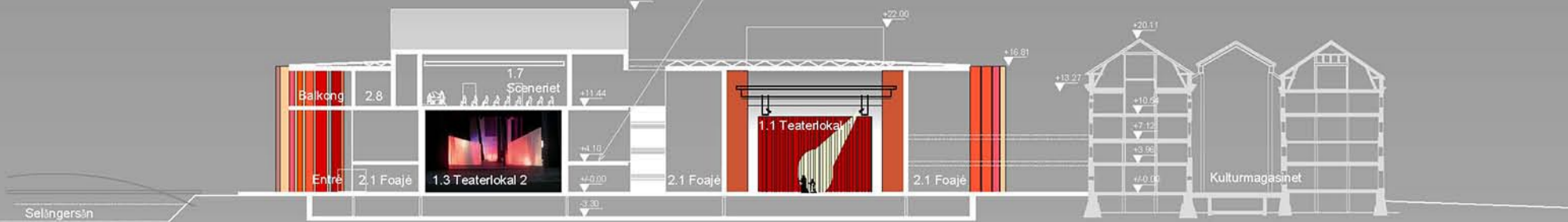


Foajé

Kulturhybrid

[hybrid, lat. *hybrida* : korsning]

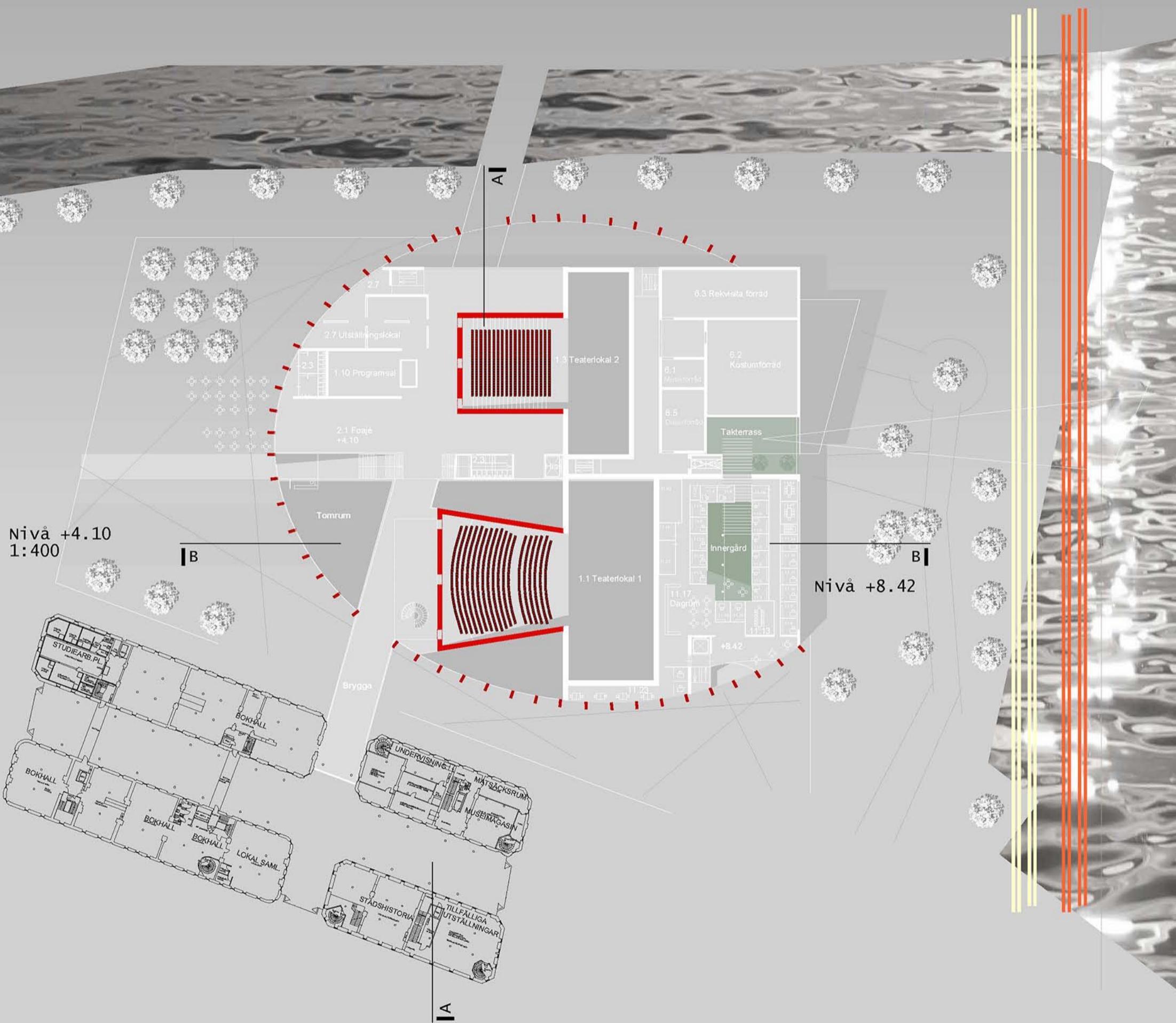




Sektionsin
Sektion -A- 1:400

Kulturhybrid

[hybrid, lat. *hybrida* : korsning]



Nivå +4.10
1:400

Nivå +8.42

Nord
1:400





Kulturhybrid

The term hybrid originates from the Latin word hybrida, - ae and means mixture. The word hybrid describes a unit which is compiled of a variety of different types of processes; its inherent characteristic is being constructed of various parts which offer their individual solutions, but when combined enable the creation of altogether new characteristics.

The design concept for the new building which integrates the Kulturmagasinet works in a similar way.

The oval shape of the building stands out proudly against the clear, straight lines of the surrounding city blocks and thus creates an eye-catching entity which has the potential to become a landmark in a most unexpected location. It keeps its distance from the Kulturmagasinet on purpose and is only linked to it by connecting glass tunnels on the ground and first floors.

The inspiration for the design is taken from objects in the currents of a stream. Similar to stones and rocks over time being shaped by a river's currents the building, in its new urban space, aims to draw in and thereby gently shape the various streams of pedestrians and cyclists approaching from the neighbouring city areas and passage ways while simultaneously offering a seamless flow within the daily city life.

To achieve this, Nybragatan is being used as a central axis, connecting both buildings by crossing the Selångersån and extending all the way to the green space at the northern riverbank. Hamngatans extension through the building follows the same goal.

The interior design principles follow the same lead. The central axis within the building, emerging due to the West-East connection to the planned commercial area, is replicated within the interior structure. Stairs and elevators are aligned along this axis. The glass paneled roof with its clear and straight lines adds to this concept due to the way the natural light helps navigation within the building. The main entrance is situated in parallel to it.

The already existing layout of the city's parks and open spaces is complemented by a vibrant piazza, flanked by trees and a café with outdoor seating, offering multiple aspect views to the surrounding buildings and the river, as well as access to the underground car park beneath. The foyer represents an extension of the piazza.

The room concept with the space for cultural usage and areas for other related activities is split into two building blocks. The culture building block, being the public access area, uses the western part of the building and slots seamlessly into the existing urban design. A linear row of various conference rooms and lecture halls emerges on its top floor. Due to the increase of the room heights the ceiling

height increases towards the East of the building, climaxing into a massive window offering sea views (across the E4). Breakout areas in front of the lecture halls will draw visitors in to sit and relax. The functional building block occupies the Eastern part of the building and forms the border to the E4. The entrance for deliveries and for the underground car park is based there, too. This part of the building also houses the administrative department. Protected from the traffic noises of the E4 it contains a courtyard and a roof terrace with sea views.

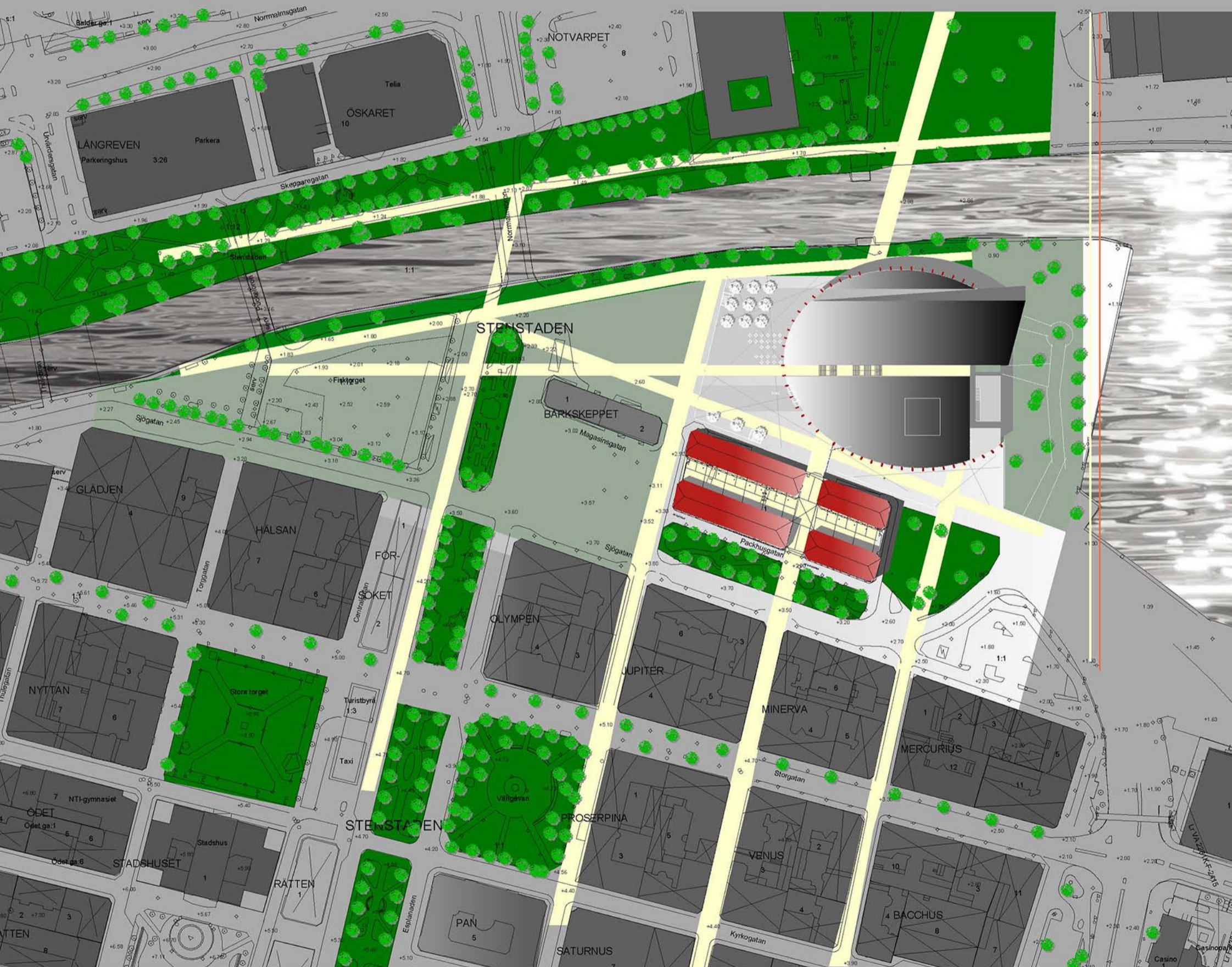
Only by separating the two different units of the building is it possible to develop two highly functional but completely independent parts of one unique structure. The above concept creates short distances, easy access and simple internal navigation.

The clear division of areas enables a compact building size and moreover one, that guarantees a commercially viable development and an energy efficient usage.

The Kulturhybrid as a solitary building with an enormous potential of becoming a recognised landmark is fronted by red concrete pillars and a glass façade which is slightly set back. The feeling of openness and varying degrees of thickness of the façade is caused by its oval shaped curving. This directs visitors gazes towards the outside and simultaneously offers delicate insights into the life of the building from the surrounding city.

Kulturhybrid

[hybrid, lat. *hybrida* : korsning]



Situationsplan
1:1.000

