

Hybrid Urban Space

The main idea of the project is to propose hybrid space in given site. Not only the given auditorium's functions are flexible and various but undefined spaces are also able to perform these functions.

Hybrid Urban Space

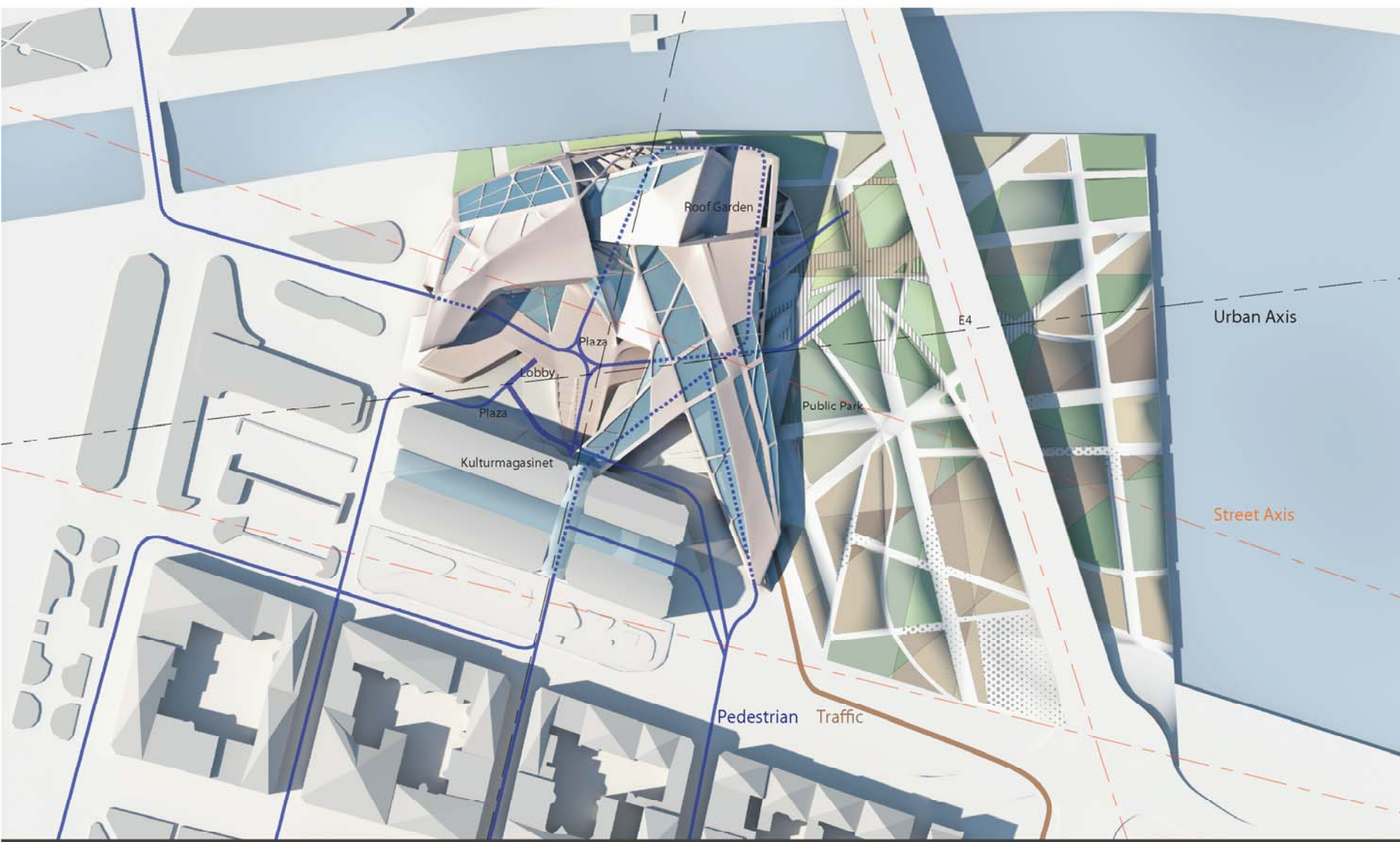
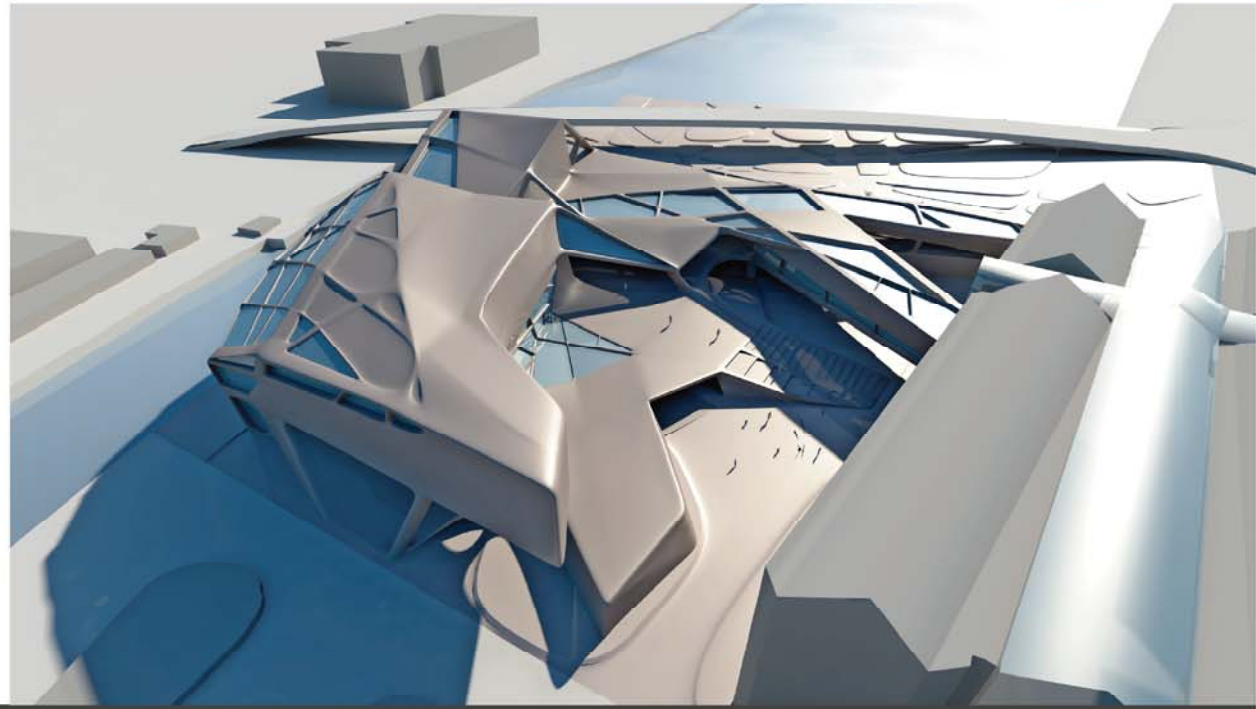
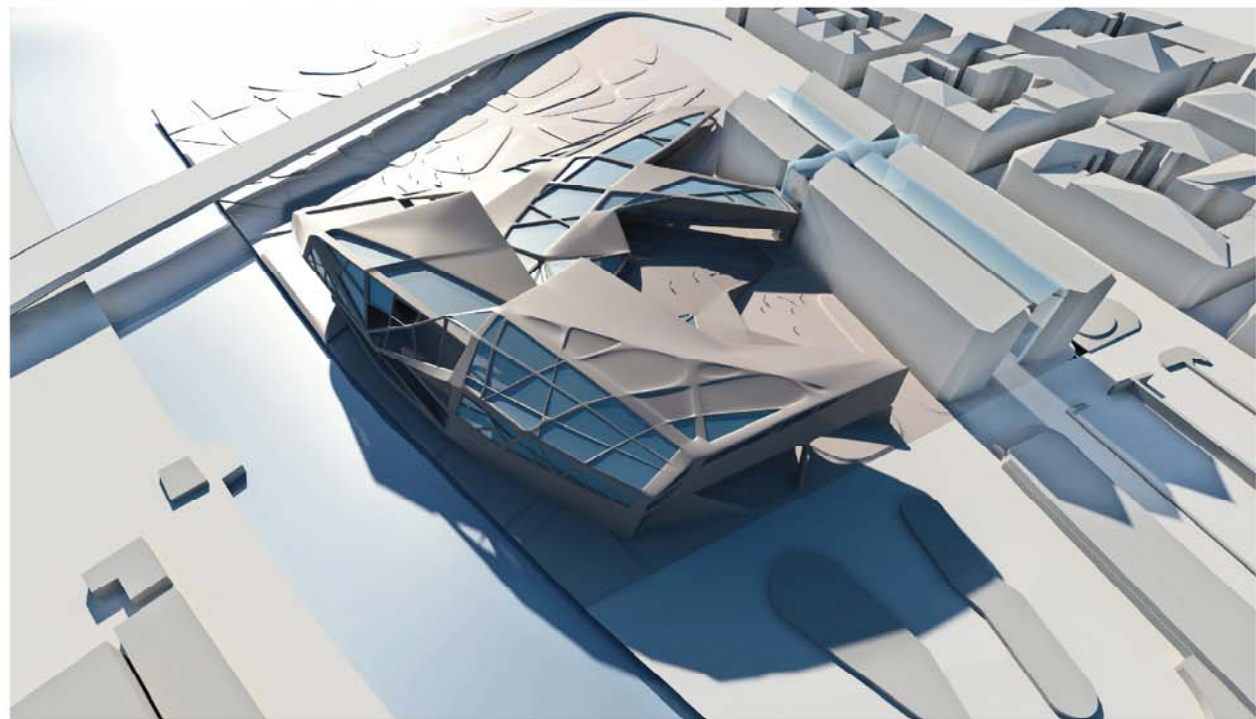
We define those spaces as 'Hybrid Urban Space'. It could define hybrid urban space as mixture of spaces, functions, circulations, structure etc. in our project.

- Spaces : We propose ambiguous boundary between interior and exterior space. People perceive curious space that haven't experienced ever.
- Functions : We propose multi-purpose functions in one space. Large open space where it located above the main foyer is hybrid space. This space could be defined by public especially young people. They will perform a play to public, watch a movie, run around the space, perform a wonderful feat with skateboard etc.
- Circulation : We propose mixture of circulation in foyer and openspace. Audience and public circulations overlap in certain space. Openspace is not just an openspace in our project. It would occur various events so that circulation also should interact each other in this place.
- Structure : We apply hybrid structure system of concrete and steel in this project. It would provide reduction of cost and shortening of time.

We'd like to open the space for the possibility of young people. Sundsvall New Art Center will provide not only formal performance program but also unexpected performance by themselves.

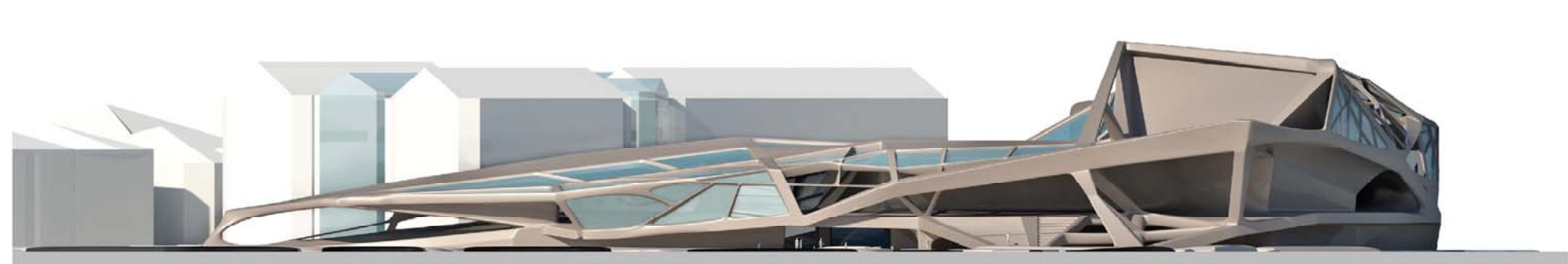
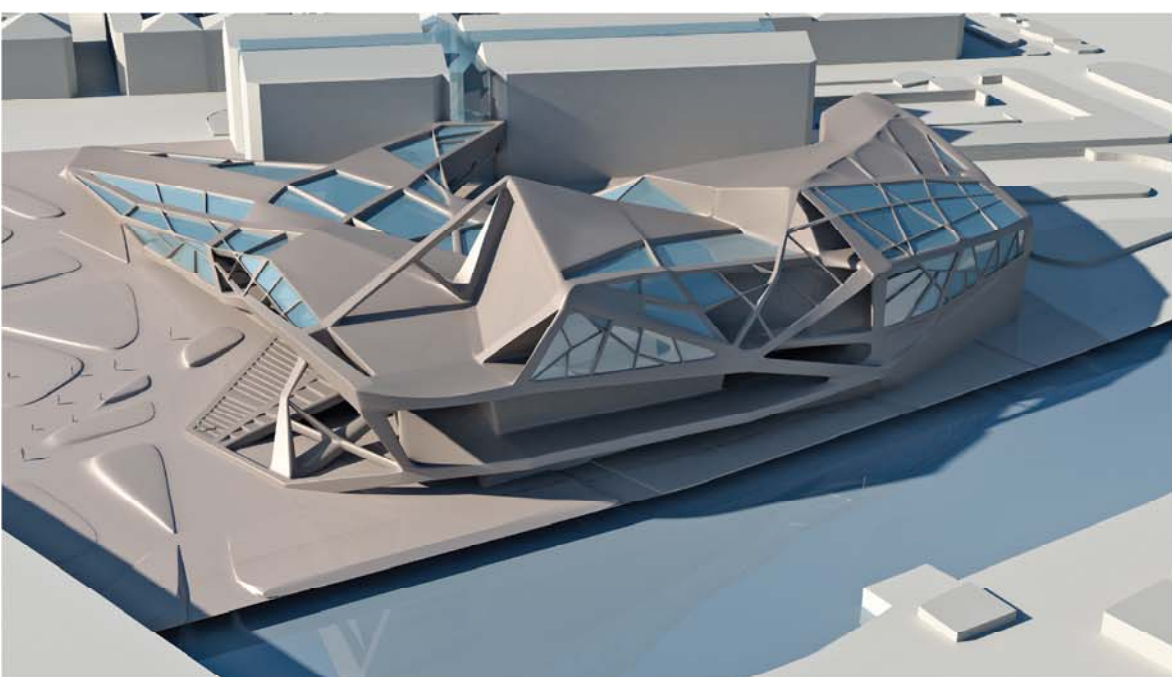
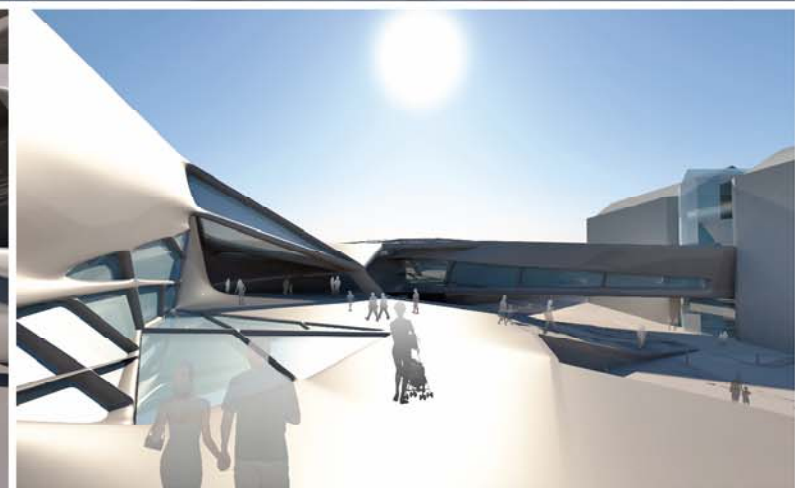
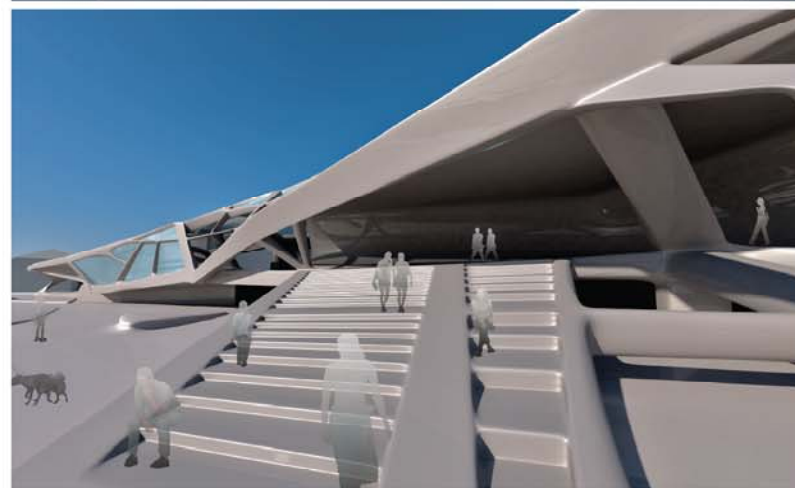
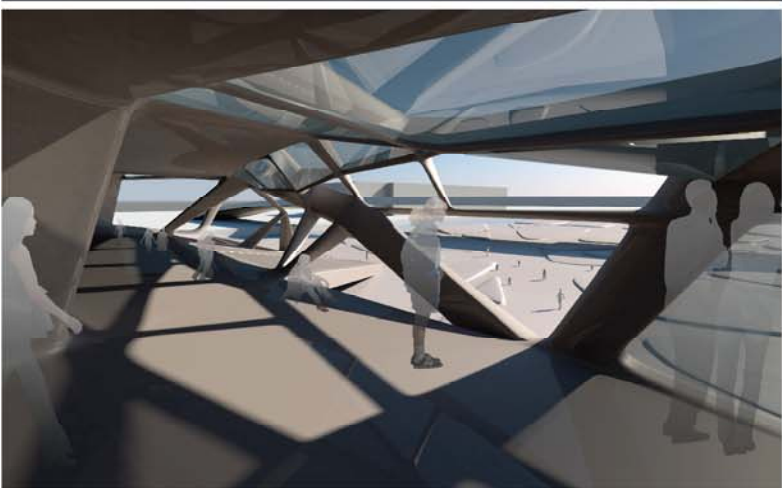
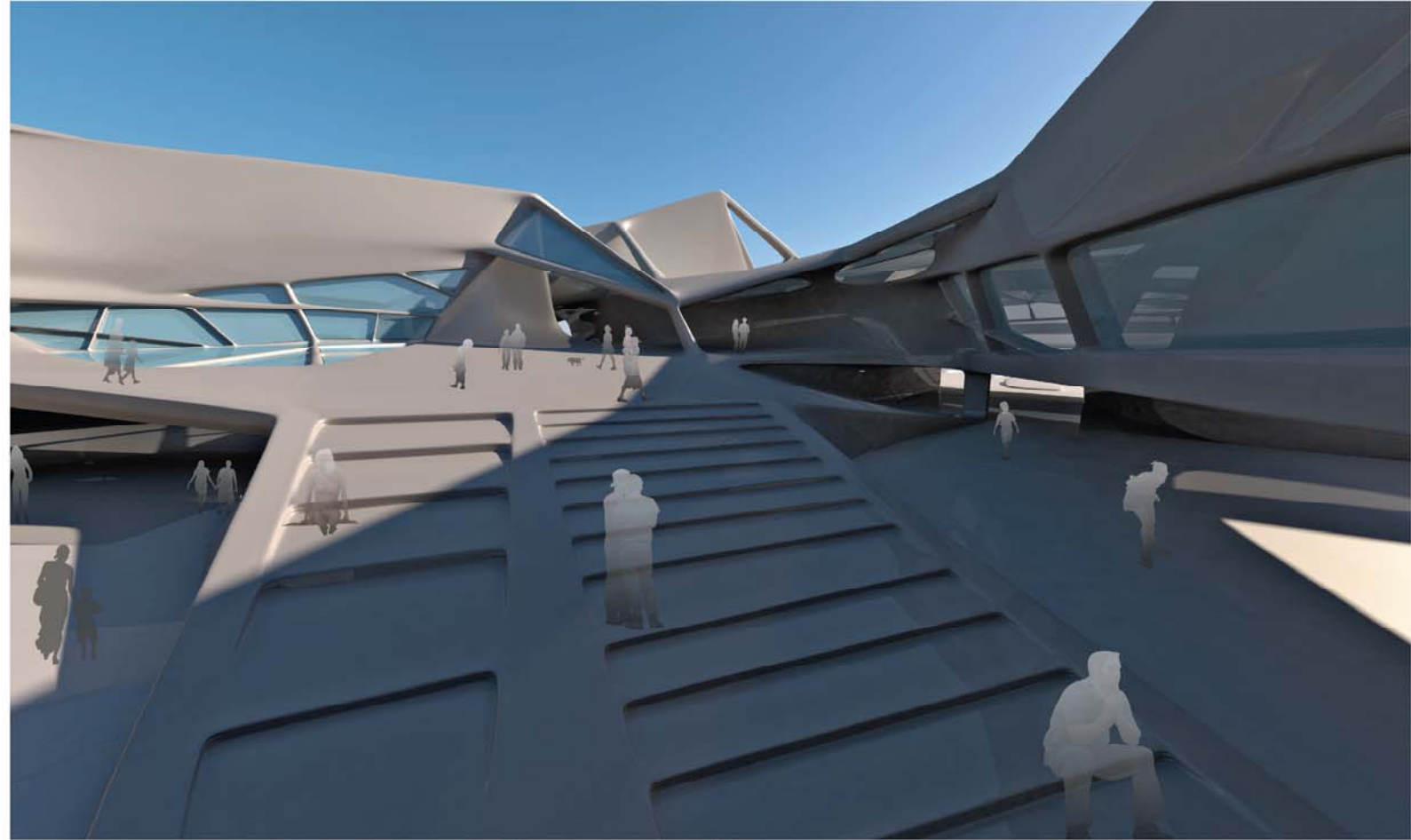
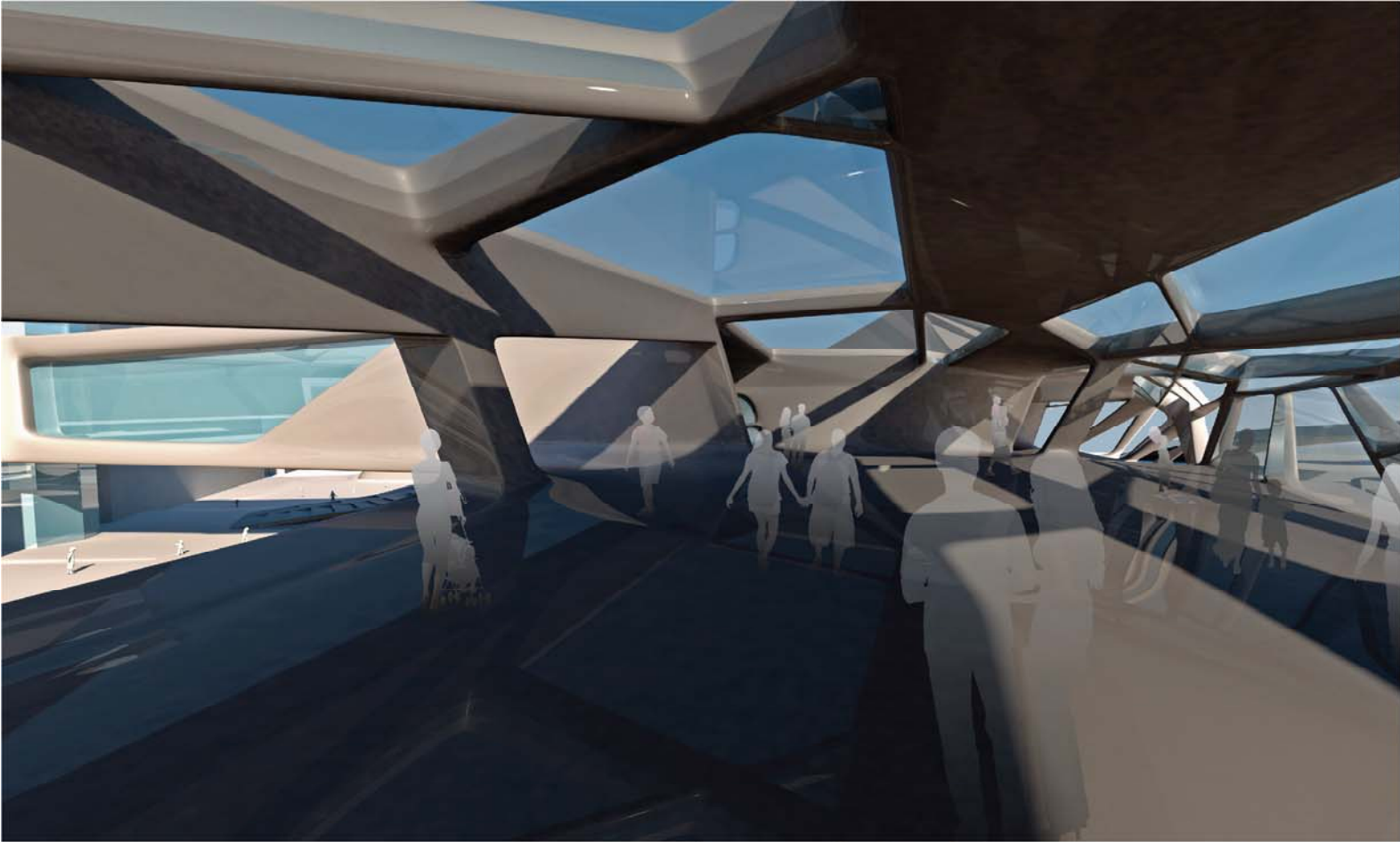
Urban Context

The site is adjacent with waterfront and also located in downtown of Sundsvall. It means the site has a potential of landmark in Sundsvall so that we focus onto accessibility. Anyone should be accessed easily to new art center. From this analysis, we found several urban axis and prolonged to our site. Then generated different axis for designing new art center. We emphasized that circulation should be interlocking each other but not be interfering.



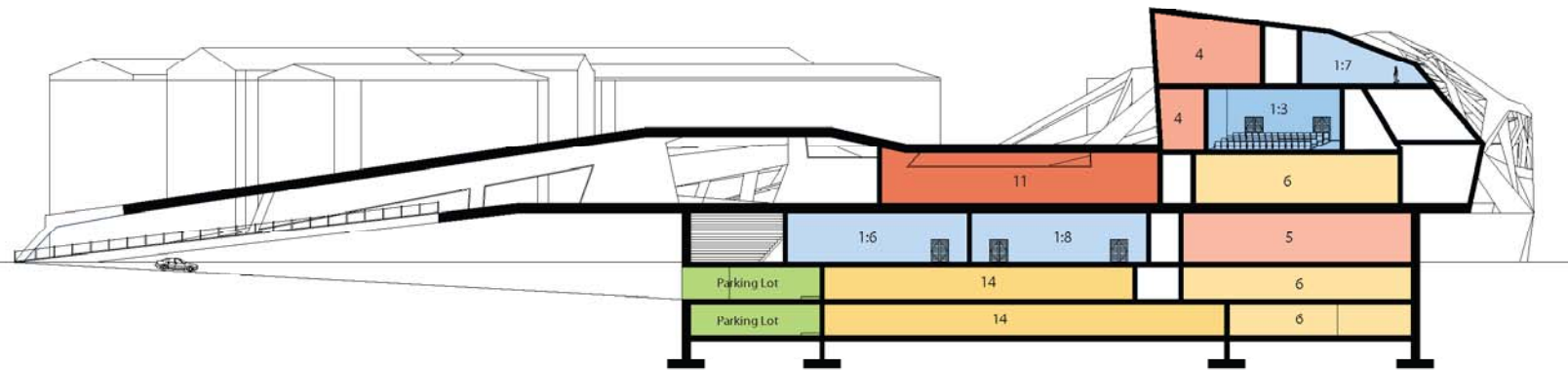
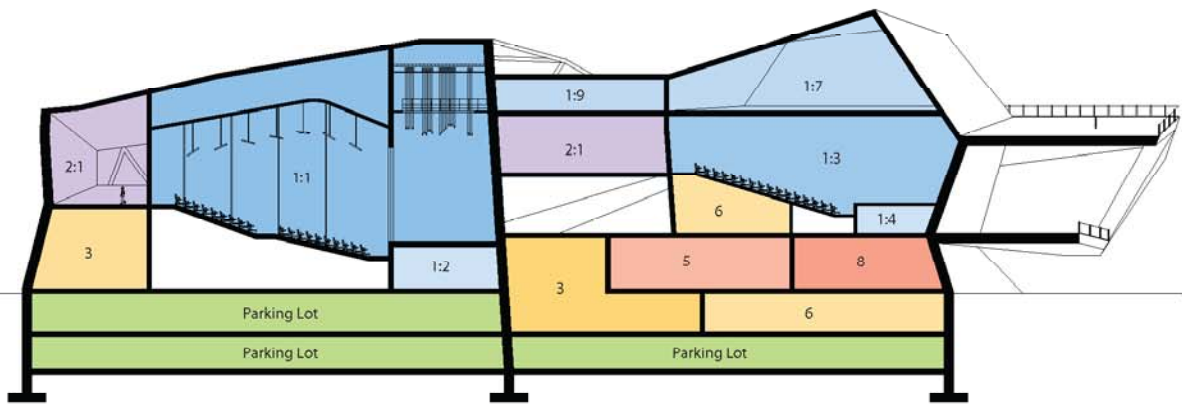
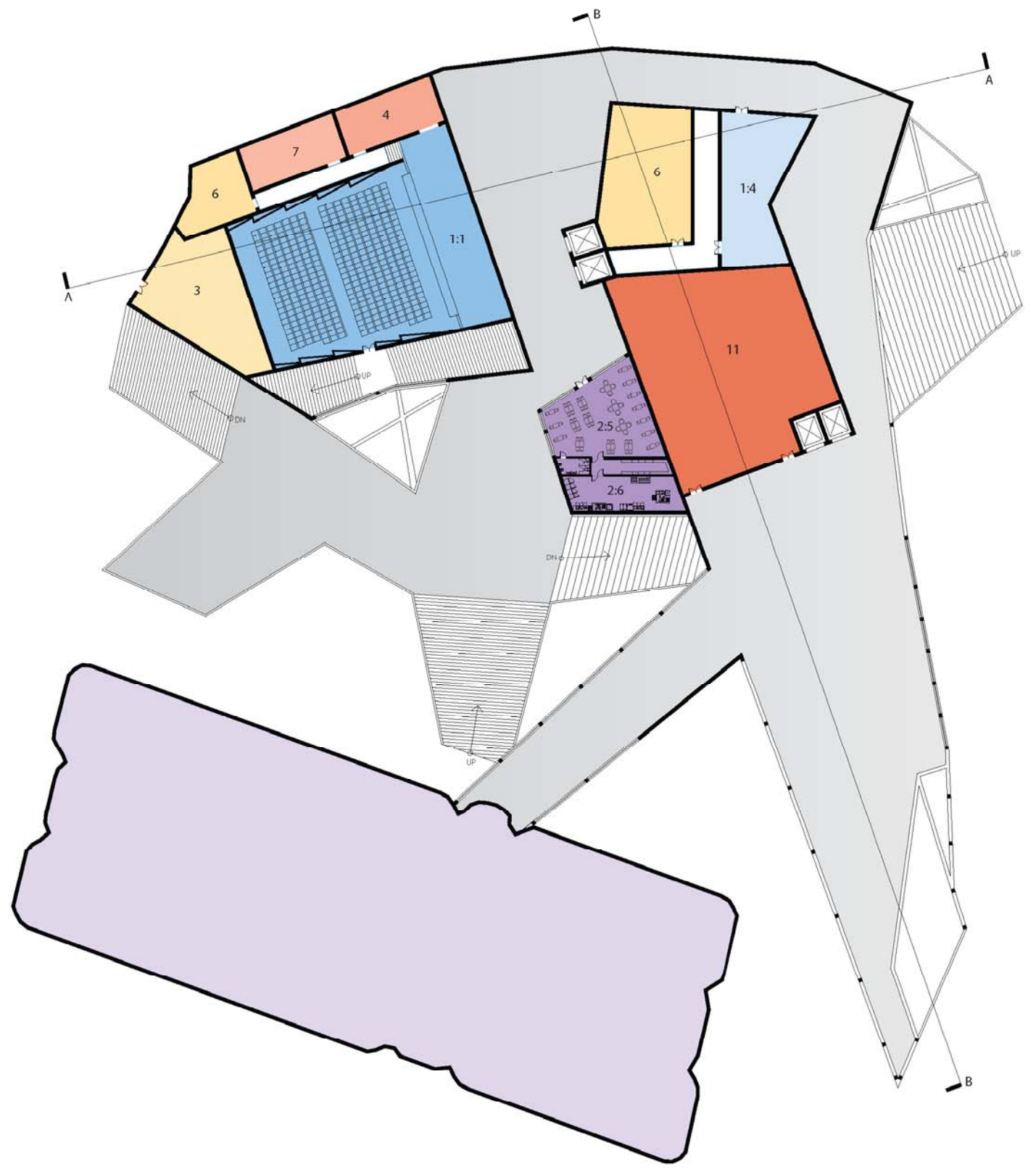
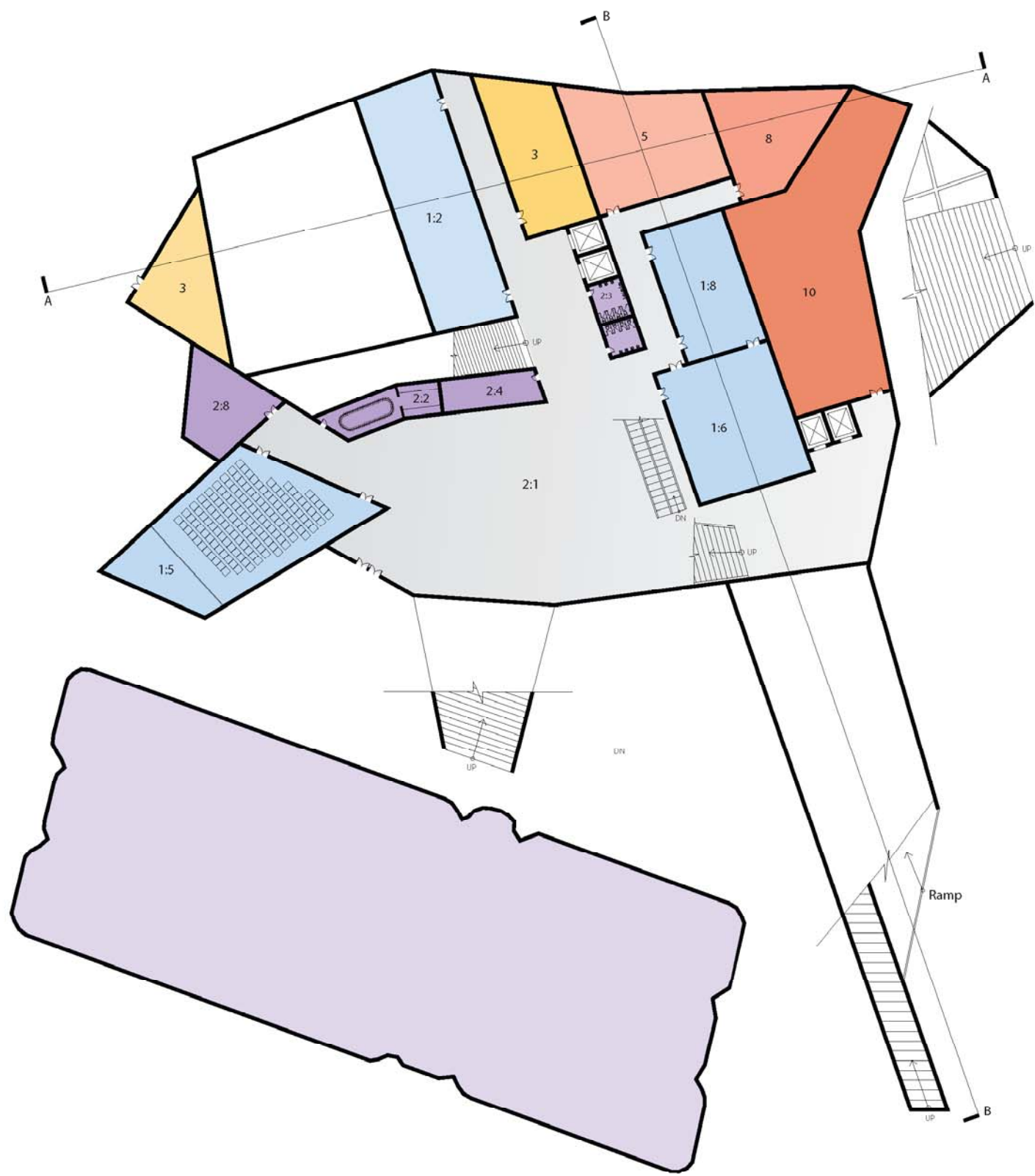
1	3
2	5

1. Perspective View | 2. Site Plan (1:1000)
 3. Perspective View from South | 4. Perspective View from North-West | 5. Perspective View from South-West



1	4		
2	3	5	6
9	7	8	

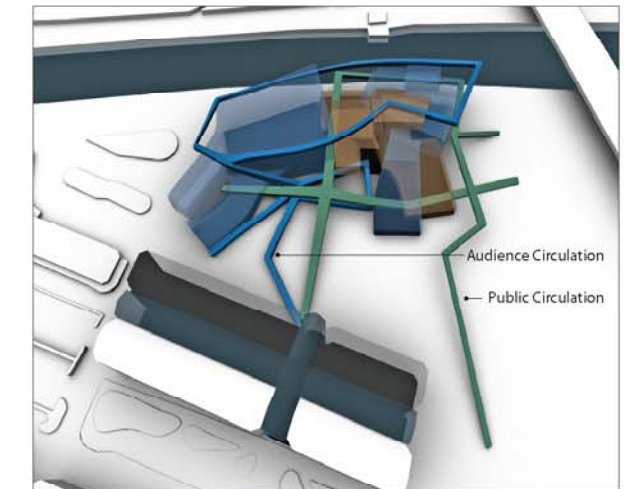
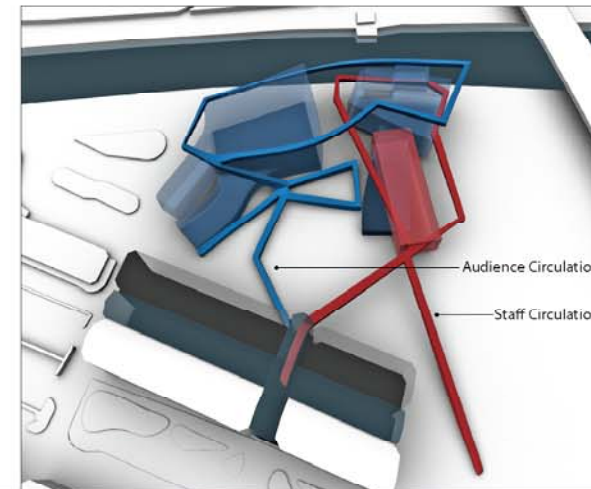
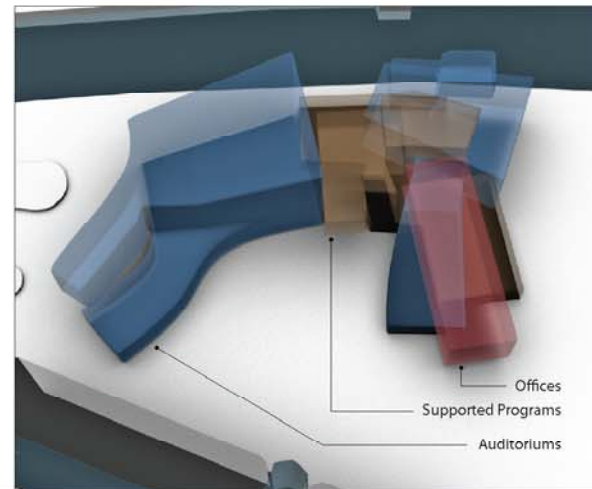
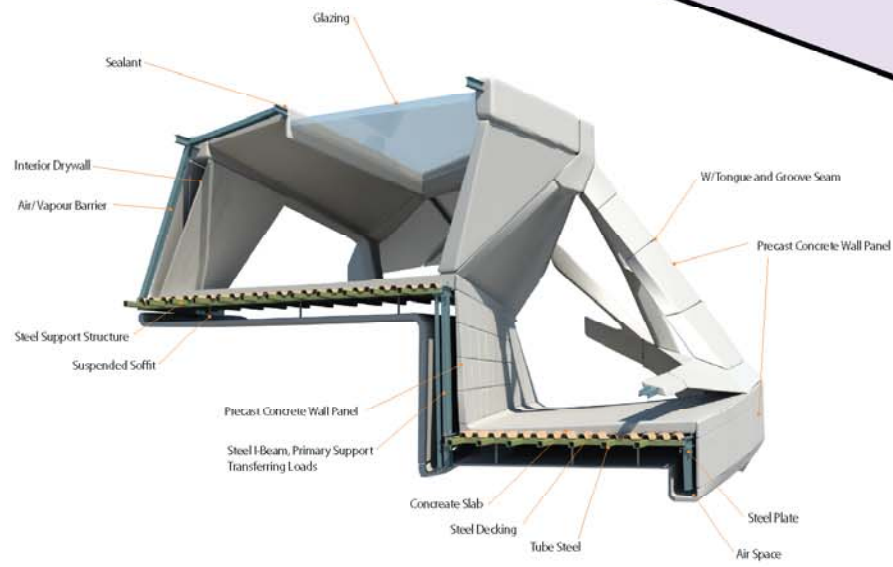
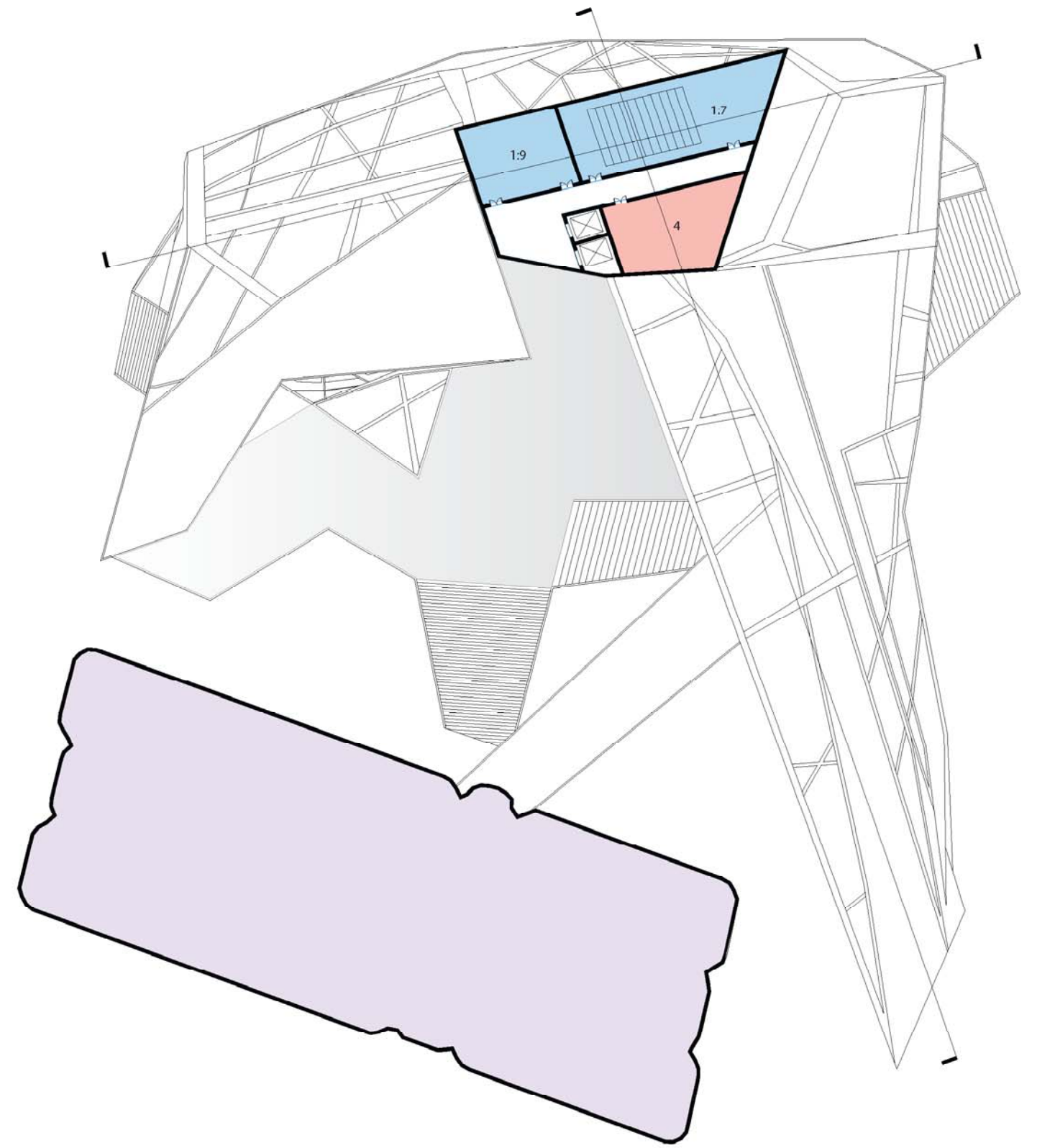
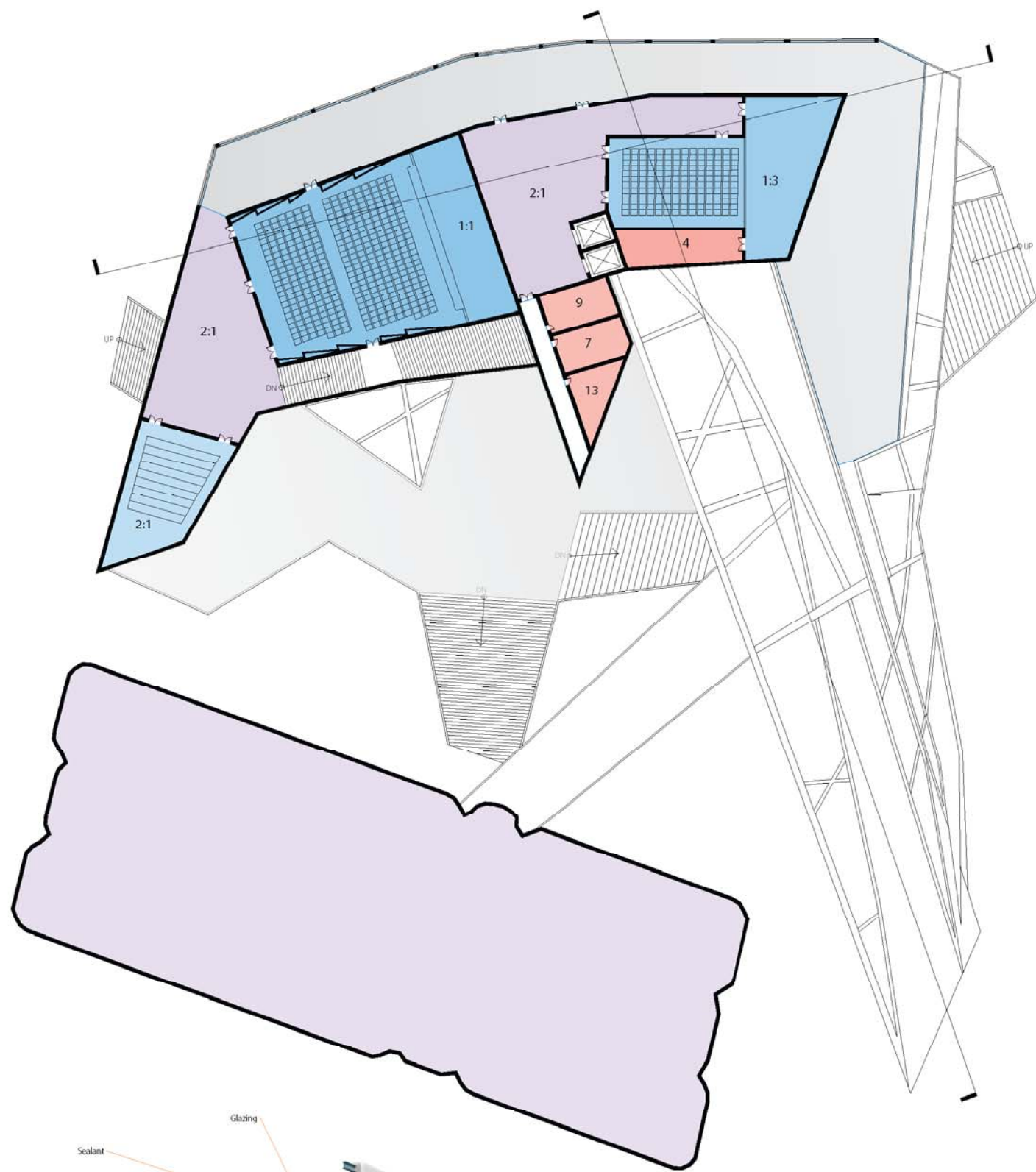
1. Interior Perspective from Entrance | 2. Interior Perspective from Corridor | 3. Interior Perspective from Corridor | 4. Perspective from Main Entrance Plaza
| 5. Perspective from Public Park | 6. Perspective from Second Level Plaza | 7. North Elevation(1:400) | 8. West Elevation(1:400) | 9. Perspective View from North



1	2
3	4

1. First Floor Plan(1:400) | 2. Second Floor Plan(1:400)
3. Cross Section A(1:400) | 4. Longitudinal Section B(1:400)

- | | | | | | | |
|----------------------|------------------------|-------------------|------------------------|----------------------|--------------------------|-------------------------|
| 1:1 Auditorium 1 | 1:5 Auditorium 3 | 1:9 Drama Room | 2:3 WC | 2:8 Youth Activities | 6 Storage | 10 Workshop |
| 1:2 Stage Basement 1 | 1:6 Auditorium 4 | 1:10 Meeting Hall | 2:4 Box Office | 3 Deliveries | 7 Make-up and Mask Rooms | 11 Offices |
| 1:3 Auditorium 2 | 1:7 Experimental Stage | 2:1 Foyer | 2:5 Cafe/Restaurant | 4 Dressing Rooms | 8 Light Studios | 12 Technical Facilities |
| 1:4 Stage Basement 2 | 1:8 Dance Room | 2:2 Cloakroom | 2:6 Restaurant Kitchen | 5 Ateliers | 9 Music and Sound Design | 13 Cleaning |



1	2
3	4

1. Third Floor Plan(1:400) | 2. Fourth Floor Plan (1:400)
3. 3D Chunk Detail | 4. Circulation Diagram