

Cultural Centre Sundsvall

The new cultural centre will be the Generator for cultural life in Sundsvall. The building and its environment will invite to become both spectator and actor.

The bright white sculpture is a transparent composition of the auditoria entangled with open and comfortable public spaces. Towards the river the centre is surrounded by a huge deck for cultural events, on top of the car park.

The design lacks dead facades, the main foyer and restaurant are connected to the deck, the dance room and artists café to the street opposite the Kulturmagasinet. The main entrance is located at the new Kulturplaza. Moving the entrance of the Magasinet to this side will instigate a lively square. From the main foyer monumental stairs lead up between the two main auditoria to the bridge back to the Magasinet.

Higher up the third auditorium is located with its own foyer, this part can be operated separately. A great Jazz club with spectacular views of the bay and the city.

Theatre is made by everyone everywhere, from the intimate auditoria to the foyer-deck with stairs like grandstands.





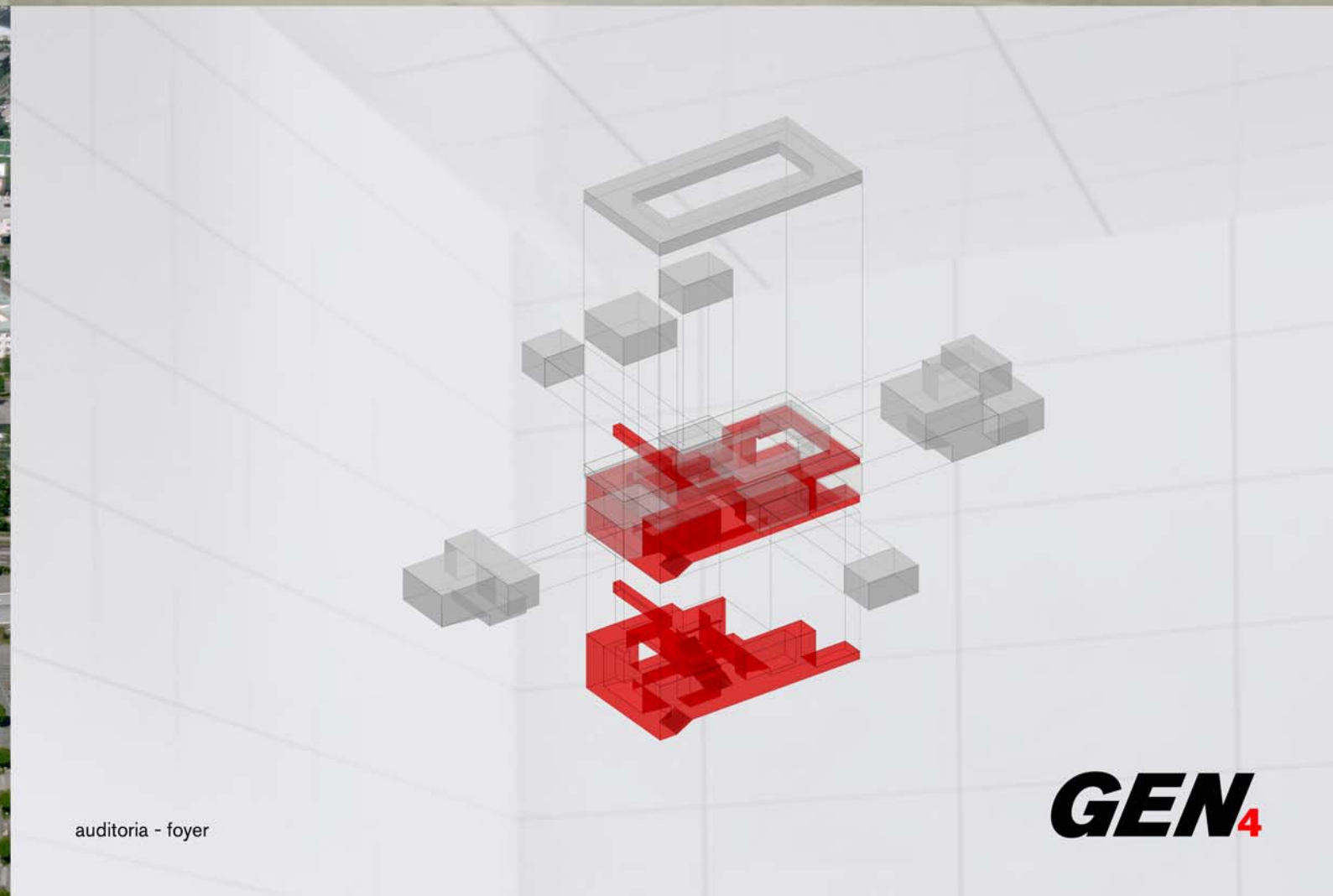
Kulturplaza - main entrance



view from festival-deck



bird-eye view



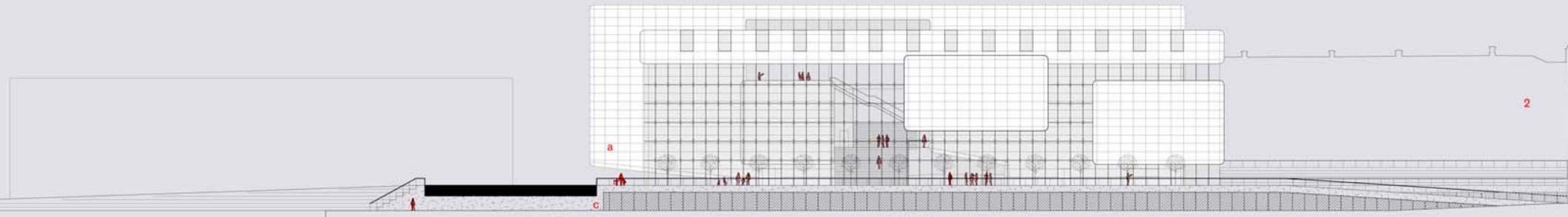
auditoria - foyer

- Room-index
- 1- new Kulturplaza
 - 2- Kulturmagasinet
 - 3- new entrance Kulturmagasinet
 - 4- Selangeran River
 - 5- Fifth Warehouse
 - 6- optional commercial development
 - 7- auditorium 500 seats
 - 8- auditorium 300 seats
 - 9- black box 150 seats
 - 10- black box 120 seats
 - 11- black box 120 seats
 - 12- dance room
 - 13- drama room
 - 14- meeting hall
 - 15- café stage
 - 16- foyer
 - 17- festival deck
 - 18- foyer/ jazz club
 - 19- artist café
 - 20- cloakroom
 - 21- public toilets
 - 22- car park 320PP
 - 23- main entrance
 - 24- staff entrance
 - 25- entrance artists and jazz club
 - 26- box office
 - 27- restaurant
 - 28- kitchen
 - 29- exhibition space
 - 30- delivery area
 - 31- goods elevator
 - 32- truck turntable
 - 33- dressing rooms
 - 34- ateliers
 - 35- storage
 - 36- make-up
 - 37- light and music studios
 - 38- workshops
 - 39- administration
 - 40- technical facilities
 - 41- bridge
 - 42- stage basement

- Main materials
- a- Corian cladding, bright white.
 - b- Steel, polished metal coating.
 - c- Yellow granite light.



north elevation



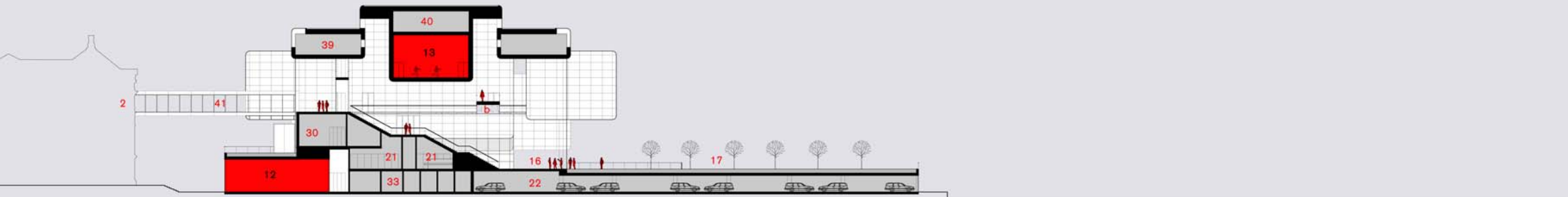
longitudinal section



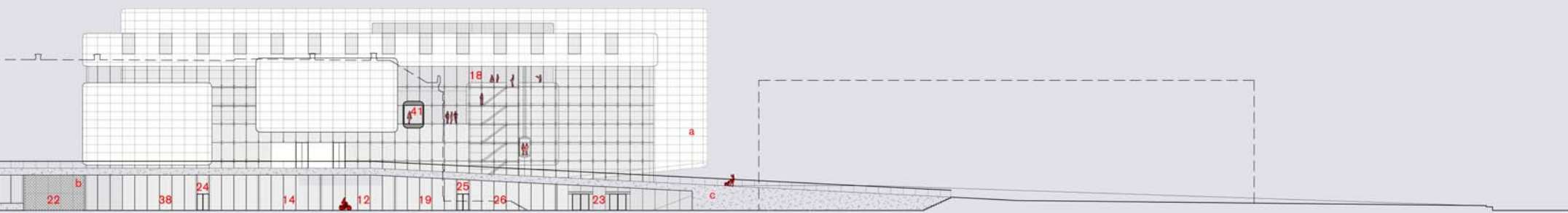
east elevation

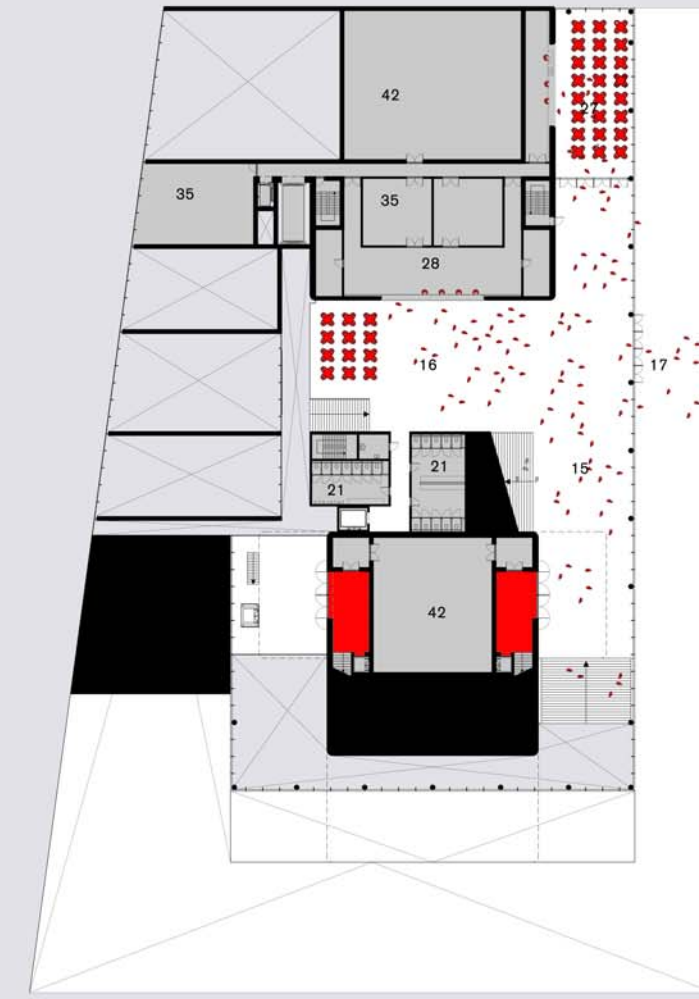
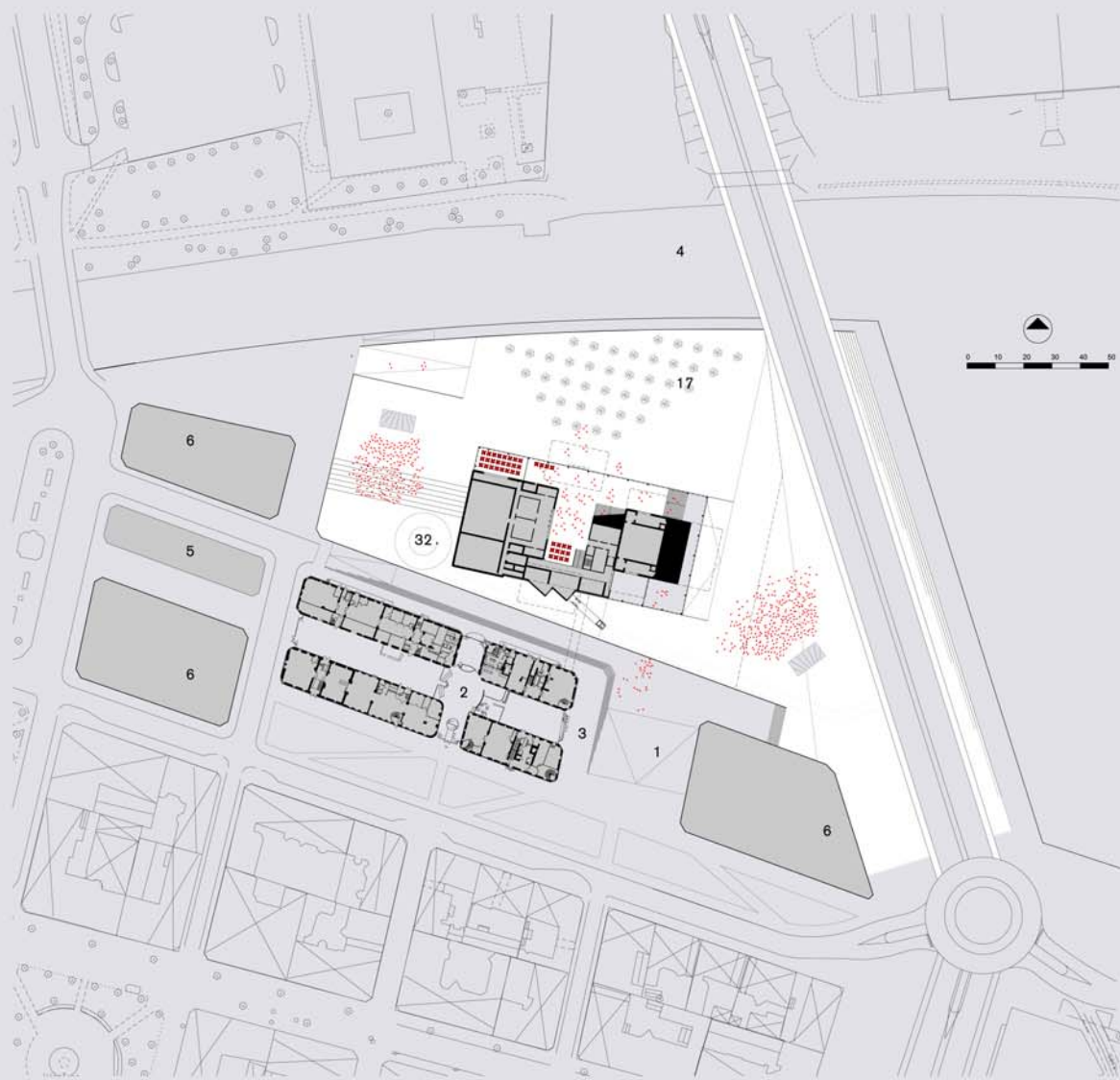


cross section



south elevation





- Room-index**
- 1- new Kulturplaza
 - 2- Kulturmagasinet
 - 3- new entrance Kulturmagasinet
 - 4- Selangeran River
 - 5- Fifth Warehouse
 - 6- optional commercial development
 - 7- auditorium 500 seats
 - 8- auditorium 300 seats
 - 9- black box 150 seats
 - 10- black box 120 seats
 - 11- black box 120 seats
 - 12- dance room
 - 13- drama room
 - 14- meeting hall
 - 15- café stage
 - 16- foyer
 - 17- festival deck
 - 18- foyer/ jazz club
 - 19- artist café
 - 20- cloakroom
 - 21- public toilets
 - 22- car park 320PP
 - 23- main entrance
 - 24- staff entrance
 - 25- entrance artists and jazz club
 - 26- box office
 - 27- restaurant
 - 28- kitchen
 - 29- exhibition space
 - 30- delivery area
 - 31- goods elevator
 - 32- truck turntable
 - 33- dressing rooms
 - 34- ateliers
 - 35- storage
 - 36- make-up
 - 37- light and music studios
 - 38- workshops
 - 39- administration
 - 40- technical facilities
 - 41- bridge
 - 42- stage basement
- Main materials**
- a- Corian cladding, bright white.
 - b- Steel, polished metal coating.
 - c- Yellow granite light.

