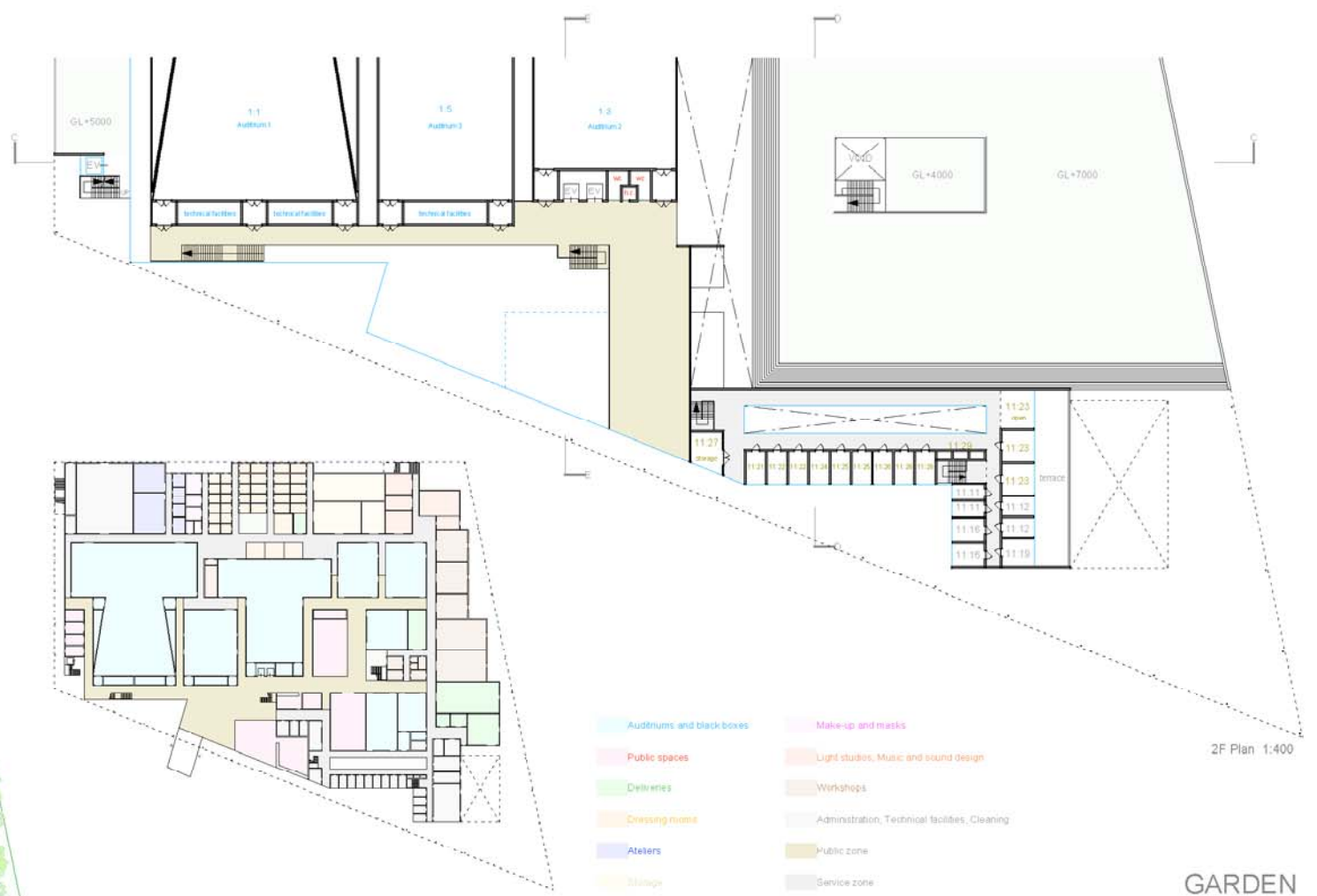
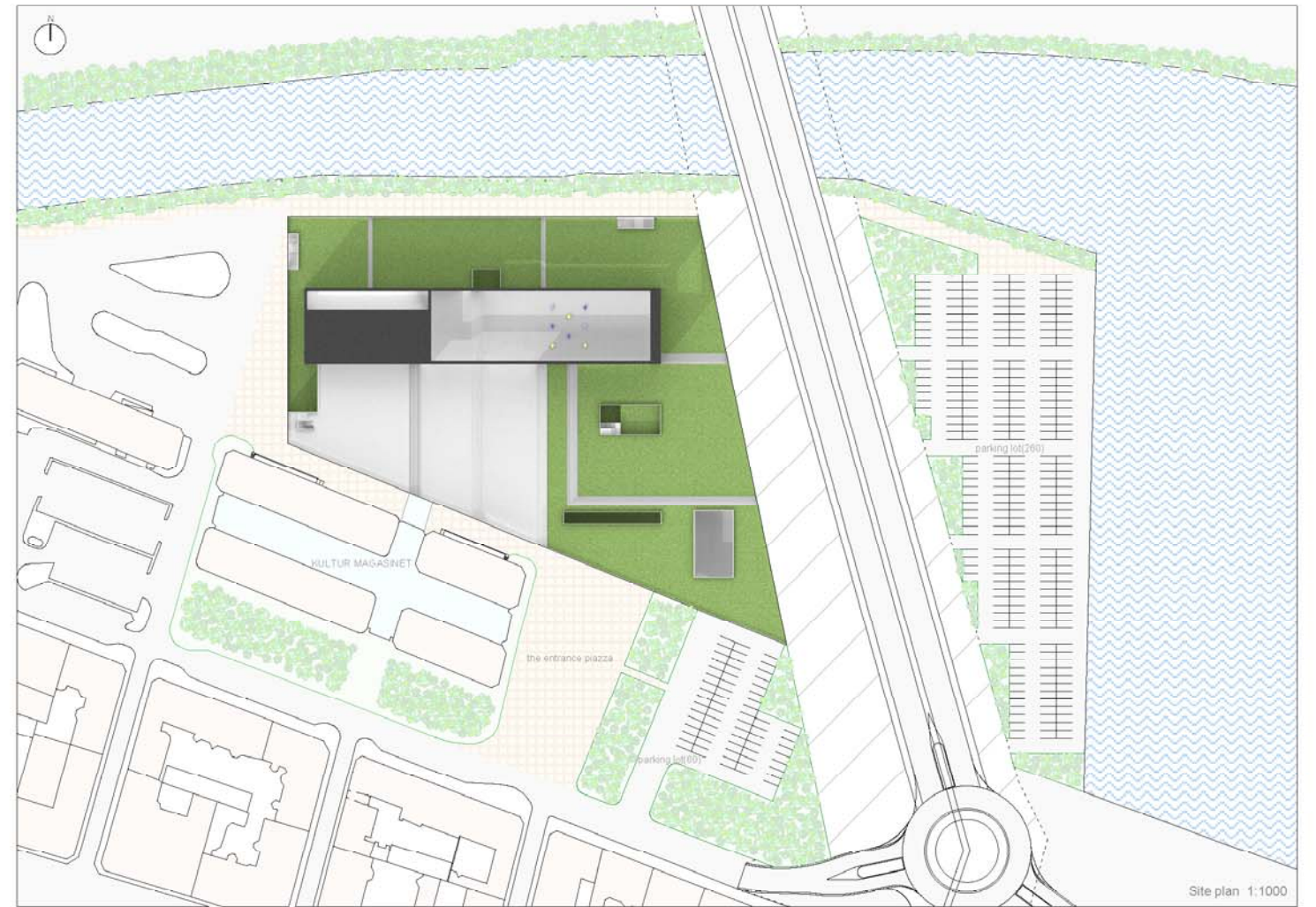
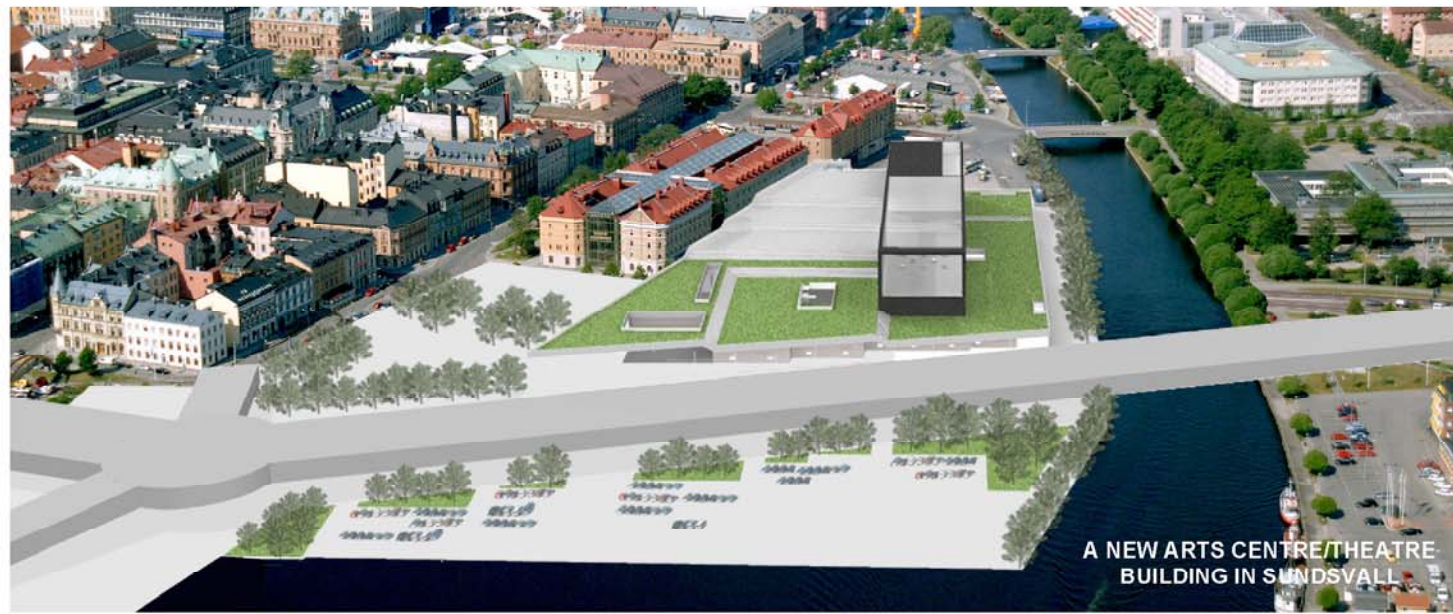
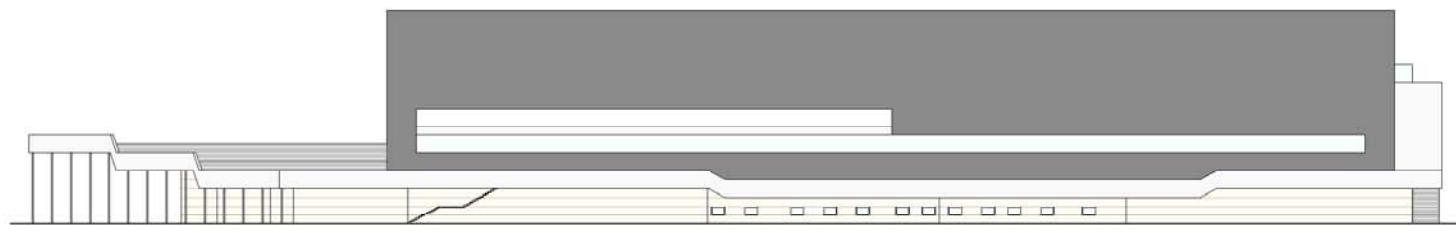


The roof of the building acts as a garden where visitors can feel the nature, and it also functions as an outdoor theater for various events. On this roof garden, visitors can communicate each other, and relax in greenery while enjoying the view of Selangensan River flowing into Sundsvallsfjorden. We placed the required spaces mostly on one story, rationally considering the ease of facility management and movement of people and articles. We came to obtain this unique stepped roof form by arranging the rooms regarding the required ceiling heights, which differ from room to room. Upper spaces of the auditoriums are combined into a rectangular mass. The mass on the roof embraces a tranquil space overlooking Sundsvallsfjorden.

Visitors enter the building through the entrance located between Kulturmagasinet and the new building. The entrance plays the role to physically connect the two buildings, and makes it easy to control the visitors' in/out movement. Visitors from E4 highway can access to the entrance through the piazza on the southeast area of the site. Cars can approach via same route. This parking space covers a part of the required number of parking, and the main parking space on the east of E4 highway covers the rest. People can approach this entrance even through the Commercial development areas on the west. Stone panels cover the exterior of the new building to match the colors and textures of Kulturmagasinet and surrounding buildings. The building possesses porch-like space under eaves, which becomes a buffer zone between inside and outside. On the north side, we create the promenade along the river.

We planned to minimize the transitional public space to suppress the increase of floor space, in order to contribute to the effective facility management. The glass curtain walls, which enclose the space from the entrance to high-ceiling foyer, give light and the openness to the space. Visitors can reach auditorium 1, 2, 3, and also a two-story restaurant from the glass corridor. Further inside are there an exhibition gallery, the auditorium 4, an experimental stage, a drama room, a dance room and a meeting hall. Staff facilities and rooms collateral with the theater, not to encounter audience passage, surround those rooms and auditoriums above. Most rooms either face outside or are adjacent to the light courts on the north and east for leading natural light into them. Windows on the north and south walls of the rectangular mass on the roof also bring light into the common area on the first floor. The building can offer comfort not only to visitors but also to staffs.

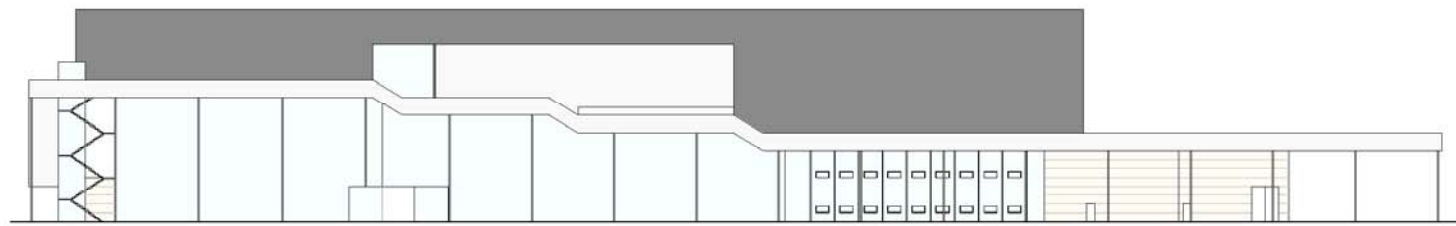




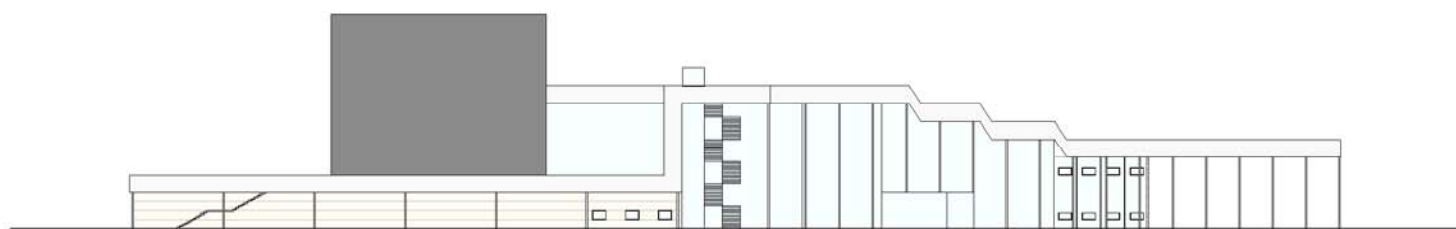
North elevation 1:400



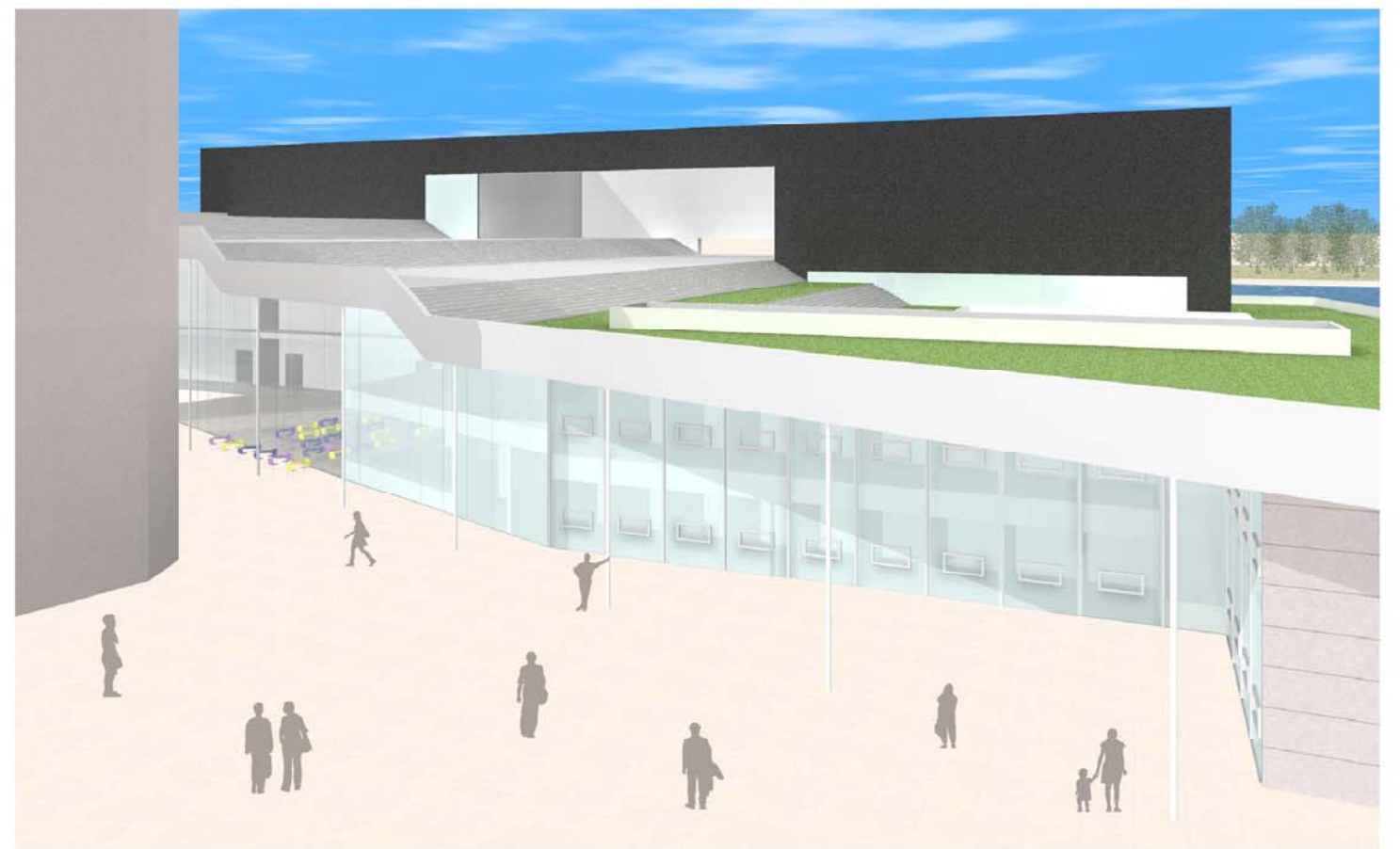
East elevation 1:400



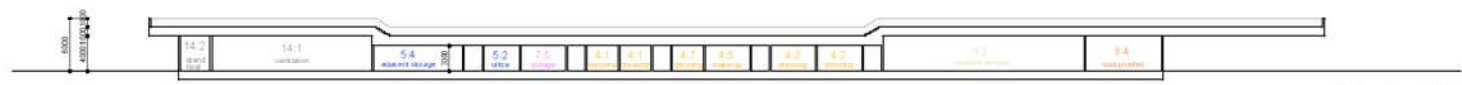
South elevation 1:400



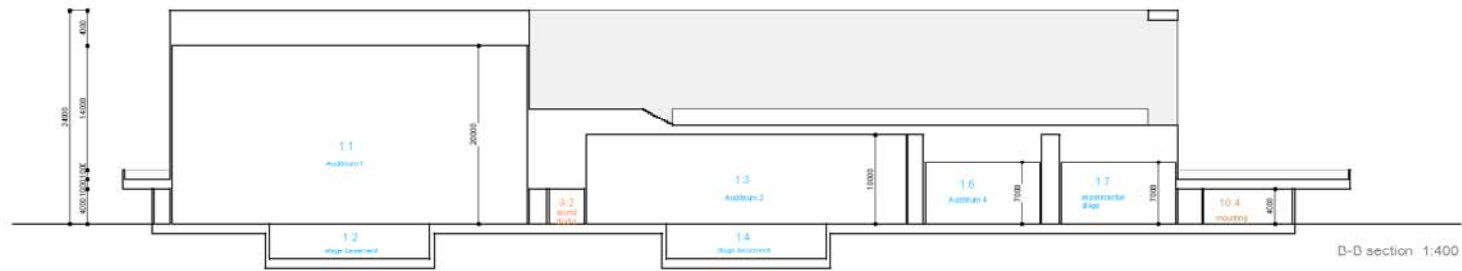
West elevation 1:400



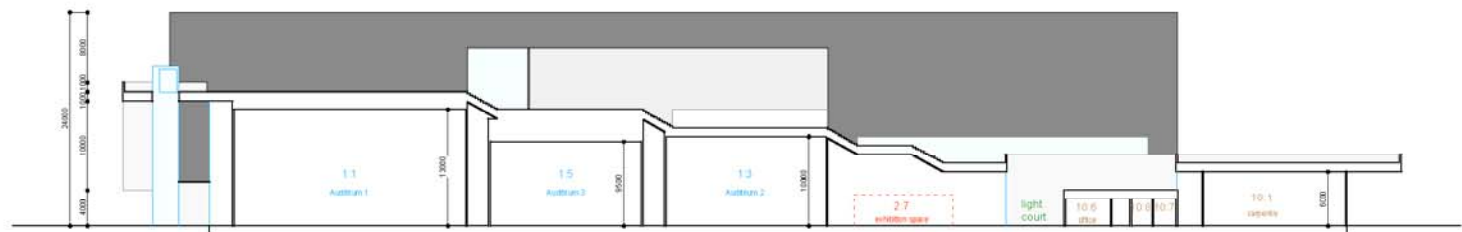
GARDEN



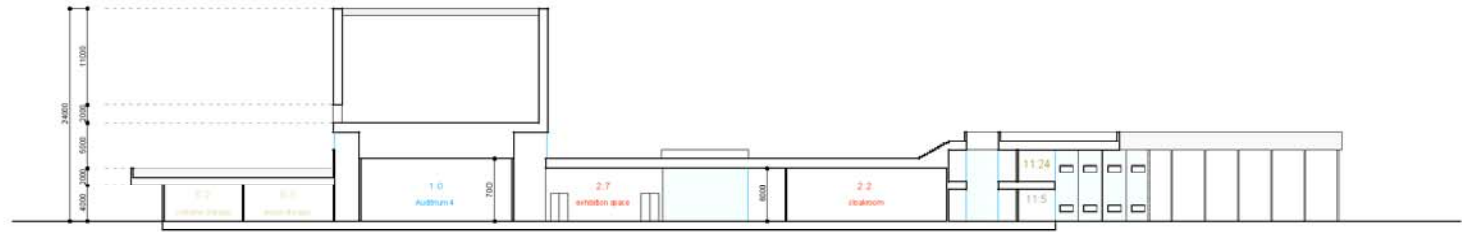
A-A section 1:400



B-D section 1:400



C-C section 1:400



D-D section 1:400



E-E section 1:400



GARDEN