

A NEW ARTS CENTER /THEATER BUILDING IN SUNDSVALL



In keeping with the public spaces system of Sundsvall and the patchwork of the city, the project proposal aims to create links between the water and the city using a limited series of elements, but a large number of relations between them: pathways by the waterside, green spaces, theatre, squares and roads will form two distinct atmospheres, full of sounds, colours and different sensations.

The square in front of the theater-art center accompanied by its gardens will tie green into the interior space, creating an ideal atmosphere for sport and leisure time and will become the most natural area between Stonetown and the northern part of the city.

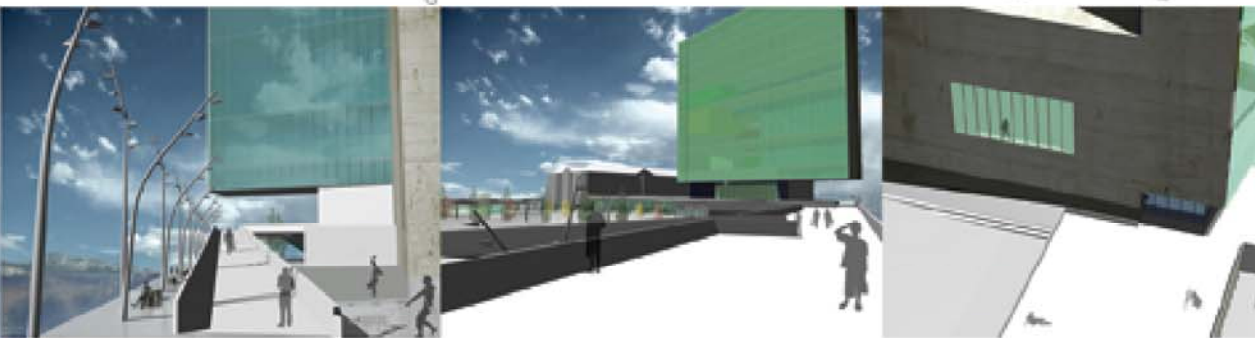
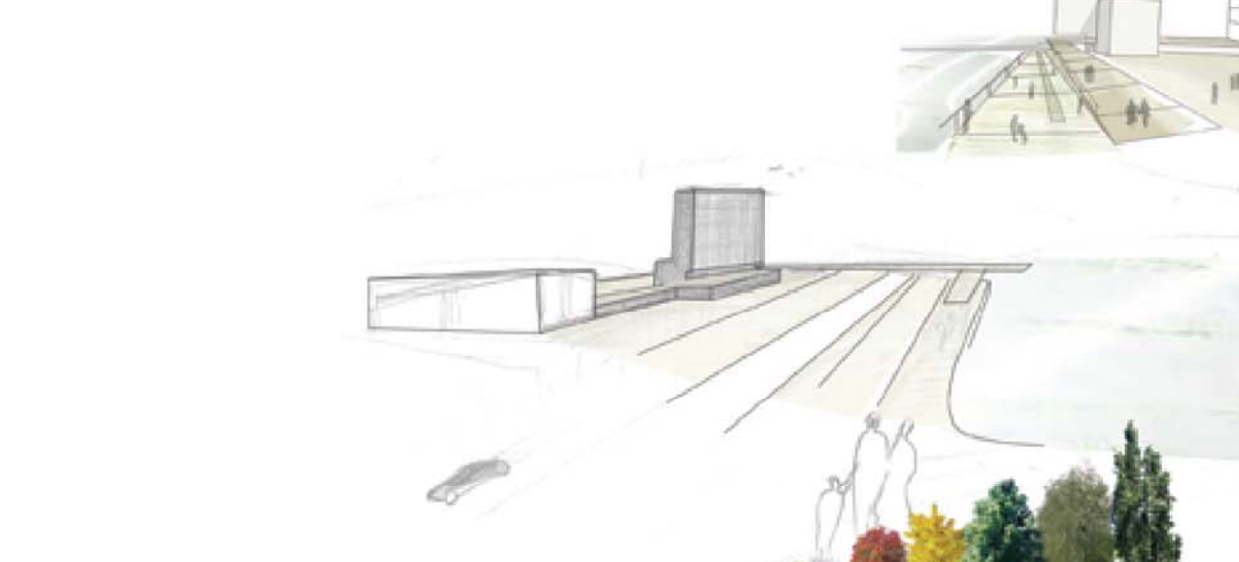
It will be the place in which sounds and colours paint the seasons on the floor of the square. The part behind the theater-art center will be an additional space for cultural outdoor events and will also be the filter between the art center and the future commercial area.

Different paths and levels with different functions such as cycling, pedestrian, skating, will guarantee the walkway between the two squares all along the riverside until the interior spaces.

The two squares are also related between them by the foyer, which is perceived as a semi-closed space and works like a frame permitting the visual relation with the landscape of the riverside.

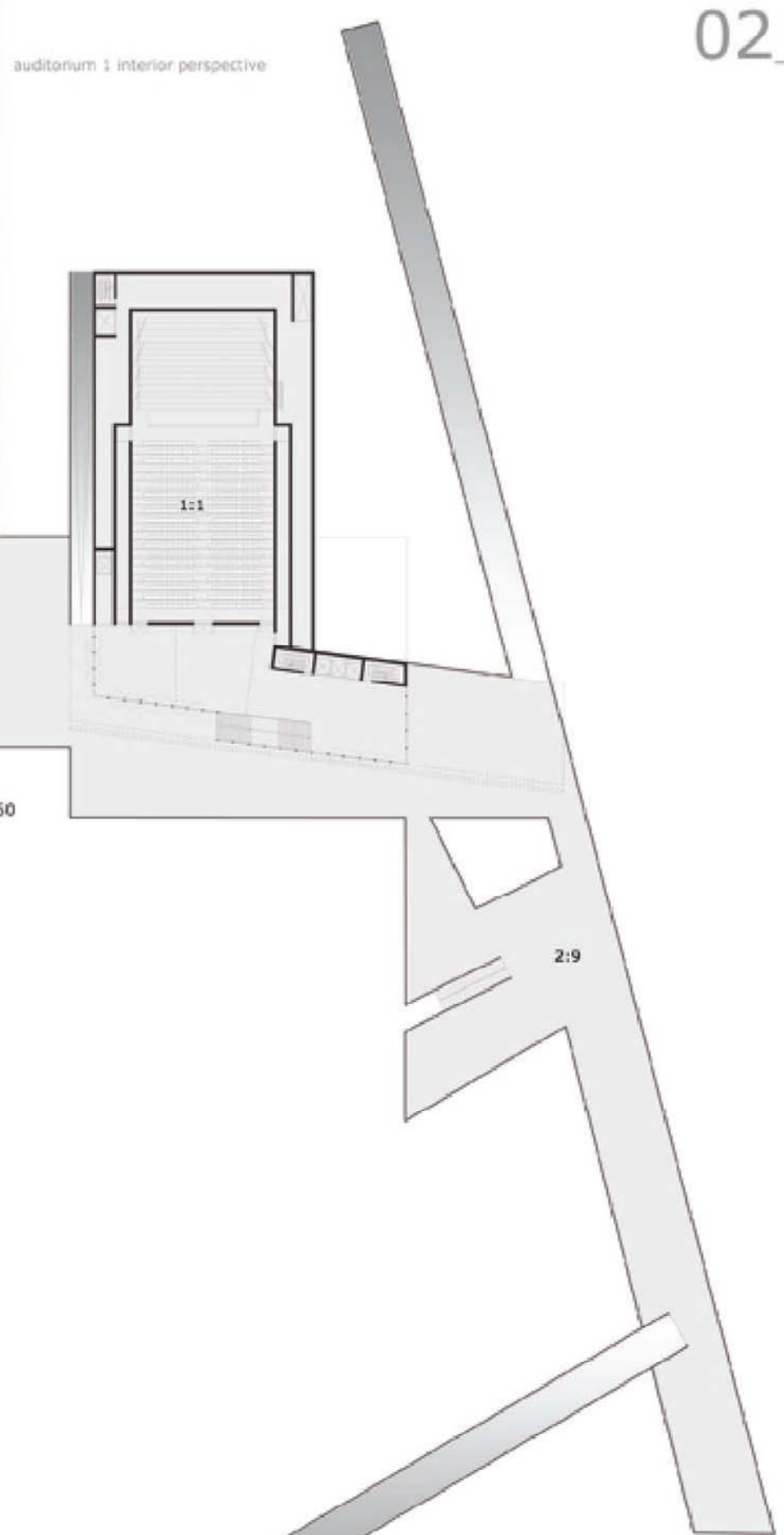
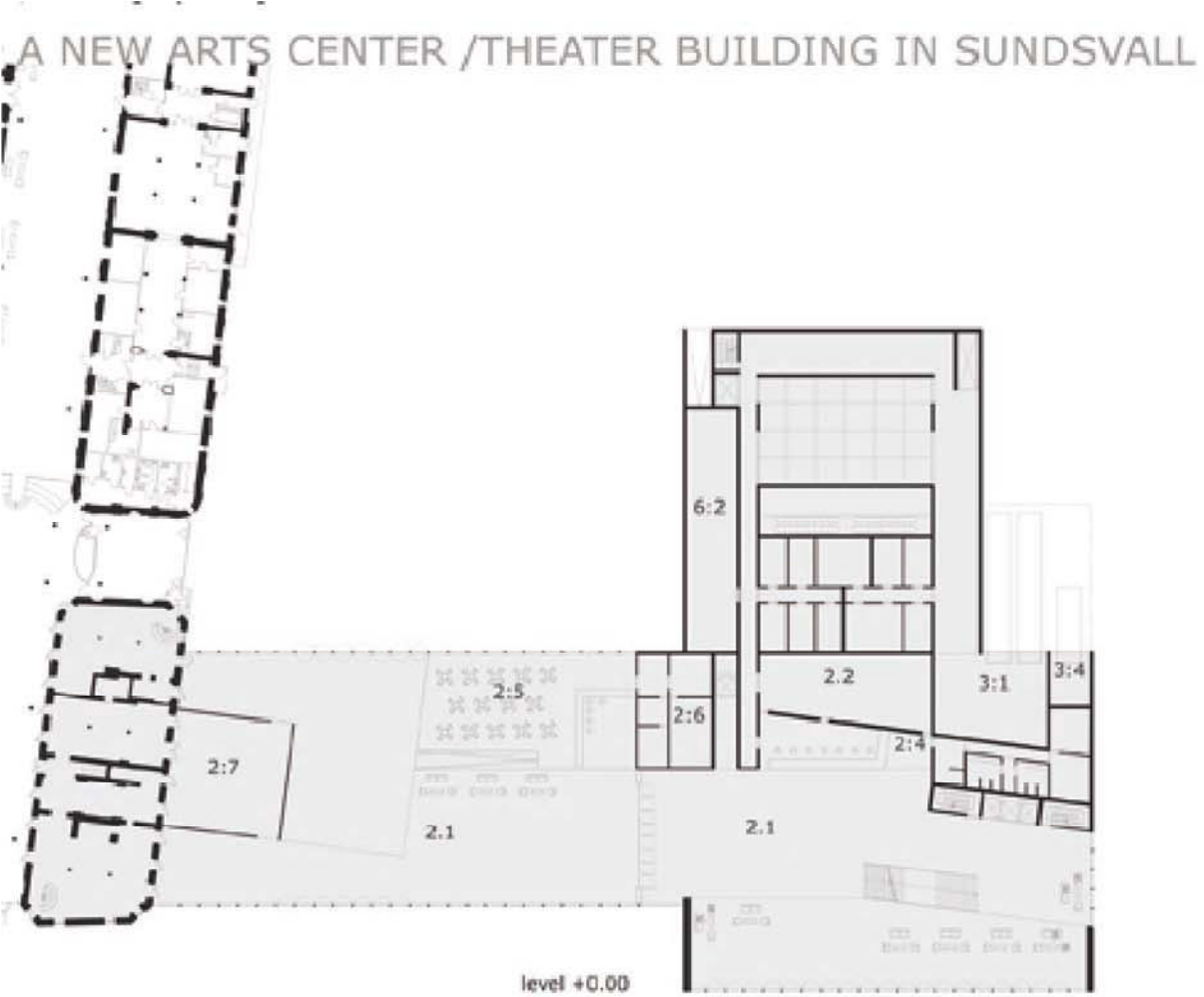
The movement is completed with a walkway articulated in two levels; the first on the ground and the other at the level of the upper square, where the majority of the activities take place.

All the elements are connected between them and with the Kulturmagazine in order to generate a unique identity and build a stronger city centre.

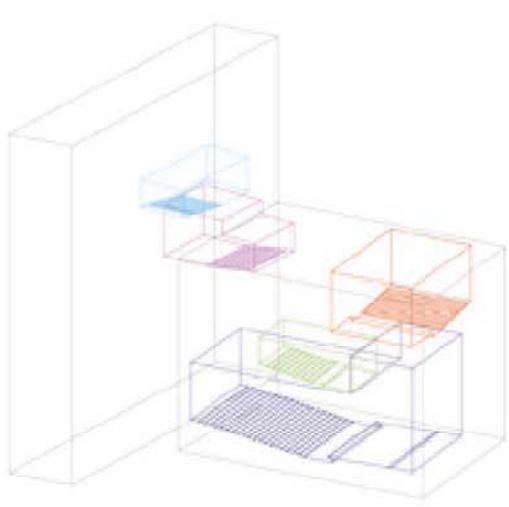


perspective from the entrance piazza

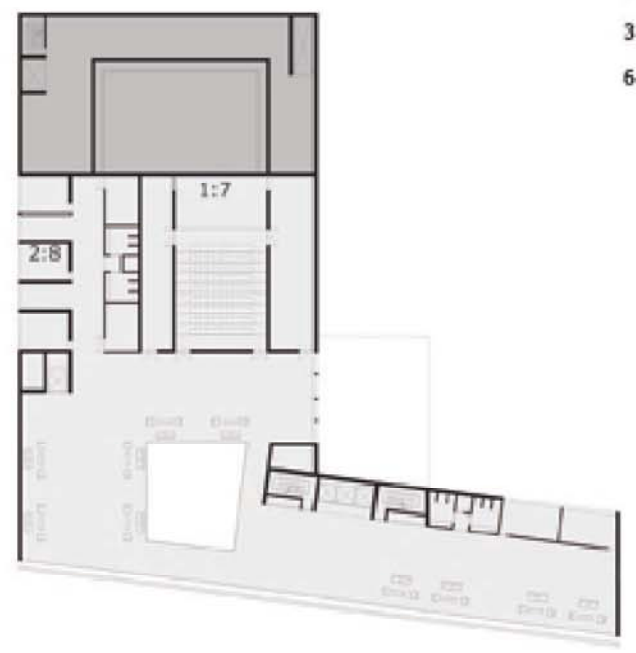
A NEW ARTS CENTER /THEATER BUILDING IN SUNDSVALL



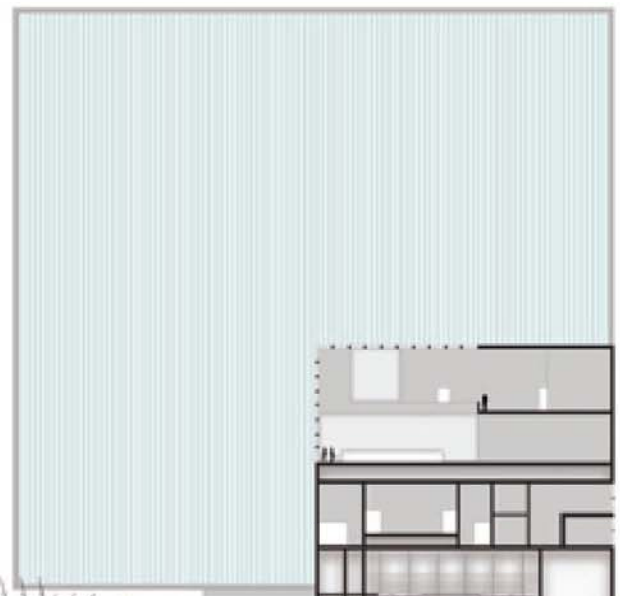
- 1:1 auditorium 1
- 1:7 experimental stage
- 2:1 foyer
- 2:2 cloakroom
- 2:4 box office/information
- 2:5 caffè/ restaurant / bar
- 2:6 restaurant kitchen
- 2:7 exhibition space
- 2:8 youth activities
- 2:9 up level piazza
- 3:1 delivery zone
- 3:4 garbage disposal
- 6:2 costume storage



level +17.10

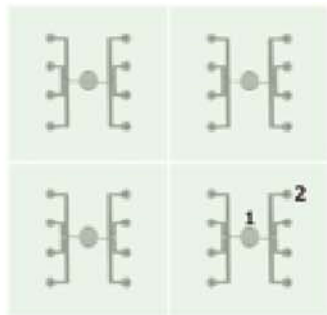


- auditorium 1 (500 seats)
- auditorium 2 (300 seats)
- auditorium 3 (150 seats)
- auditorium 4 (120 seats)
- experimental stage (120 seats)

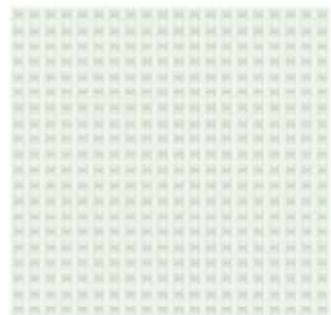


cross section B 1:400





A: modules of photovoltaic cells (1) and leds (2)

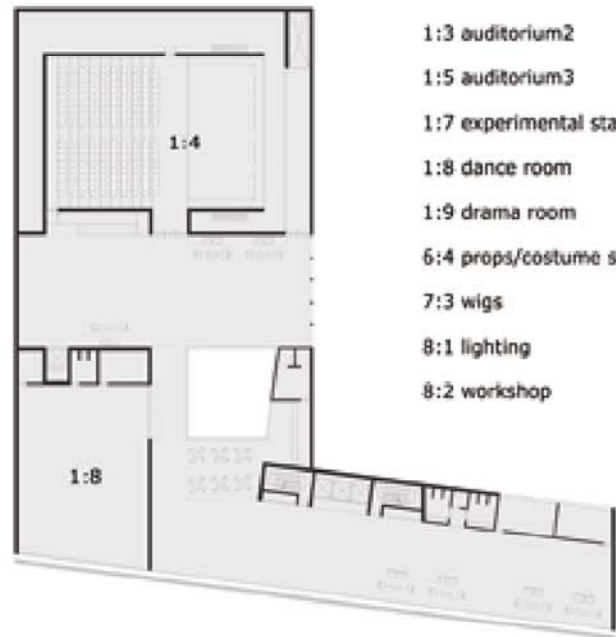


B: facade made by modules type A



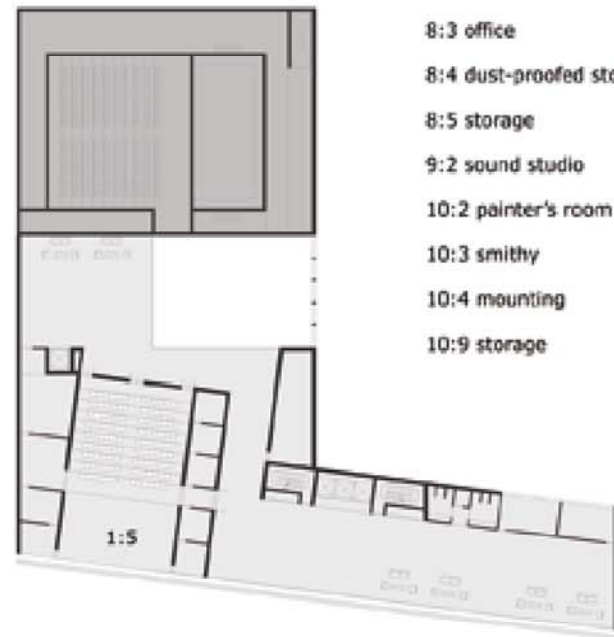
C: new arts center/theater facade

The beauty of the place where the art center will be build traced the lines of this project. The choice of the strong verticality for example, came from the will that such a privilegiate place keep enjoining a freedom that horizontality wouldn't allow. Here nothing's close, definitive: an exposition hall can become a bar or a public space, a small stairway can become an open stage: The sundsvall's citizen themselves will take in their hands the spaces around the theatre planning what they will be. And when they'll decide to get in or to pass it trouhg t hey the will find the same freedom of movement and action: go to the teahrtre, to a dance class, to see an exposition, to eat or drink something, in any case will mean for them make theirs what is the real center of this project: the nature of this place. The amazing view of the bay that the teathre's great solar energy screen looks to is the same that the people will share by the bar's or restaurant's glasswall, by the hallways, by the ramparts, by the elevated squares an even by the amministration's office. By the rays of the sun and the windblowing the nature will get in the building first entering in the cable of its facade and colouring it and then penetrating the heart of the building filling it with a natural ventilation and light all over the day. A place where the culture look at the bay, at Europe, at the whole world; a presence that will be there, on the edge of that wonderful bay, saying to the world "Sundsvall is here".



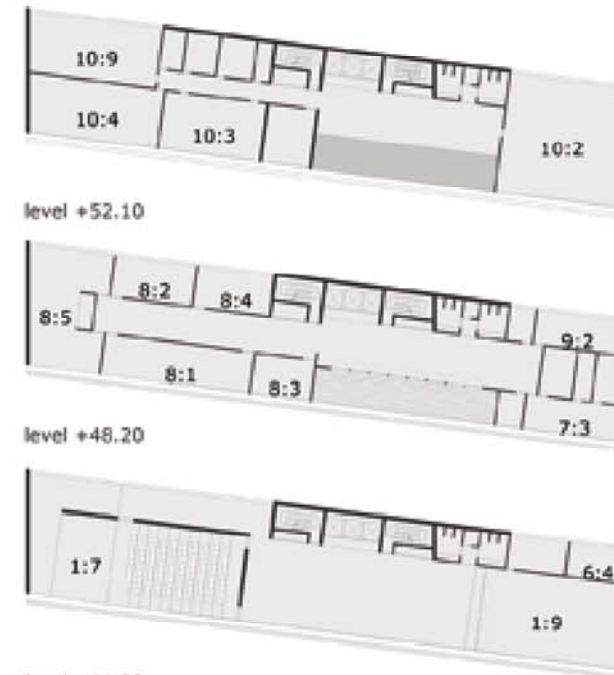
level +26.00

- 1:3 auditorium2
- 1:5 auditorium3
- 1:7 experimental stage
- 1:8 dance room
- 1:9 drama room
- 6:4 props/costume storage
- 7:3 wigs
- 8:1 lighting
- 8:2 workshop



level +31.40

- 8:3 office
- 8:4 dust-proofed storage
- 8:5 storage
- 9:2 sound studio
- 10:2 painter's room
- 10:3 smithy
- 10:4 mounting
- 10:9 storage



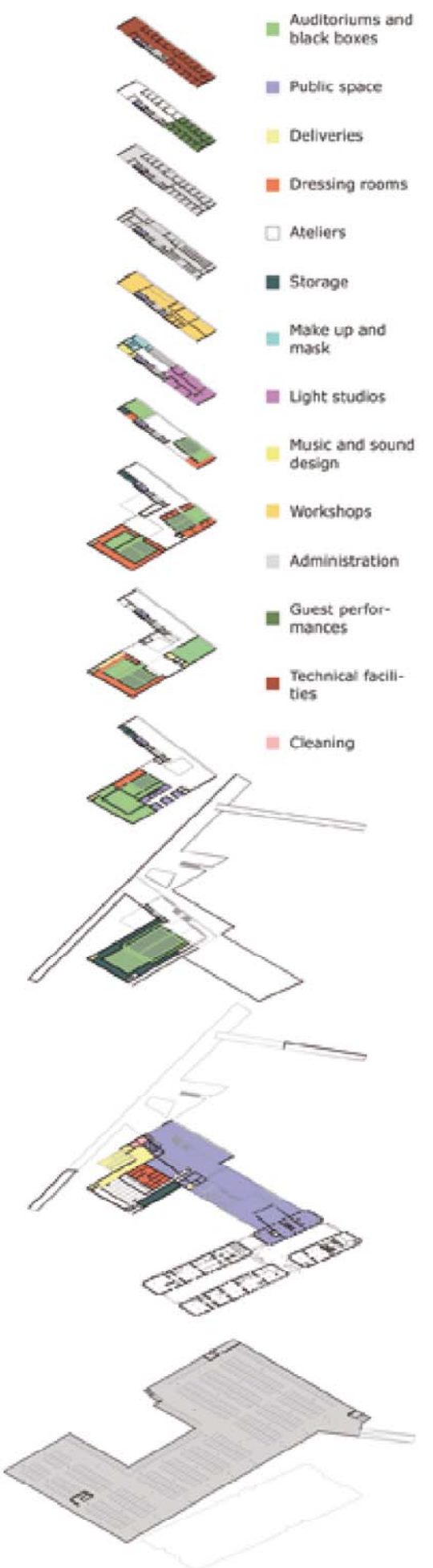
level +41.20

level +52.10

level +48.20



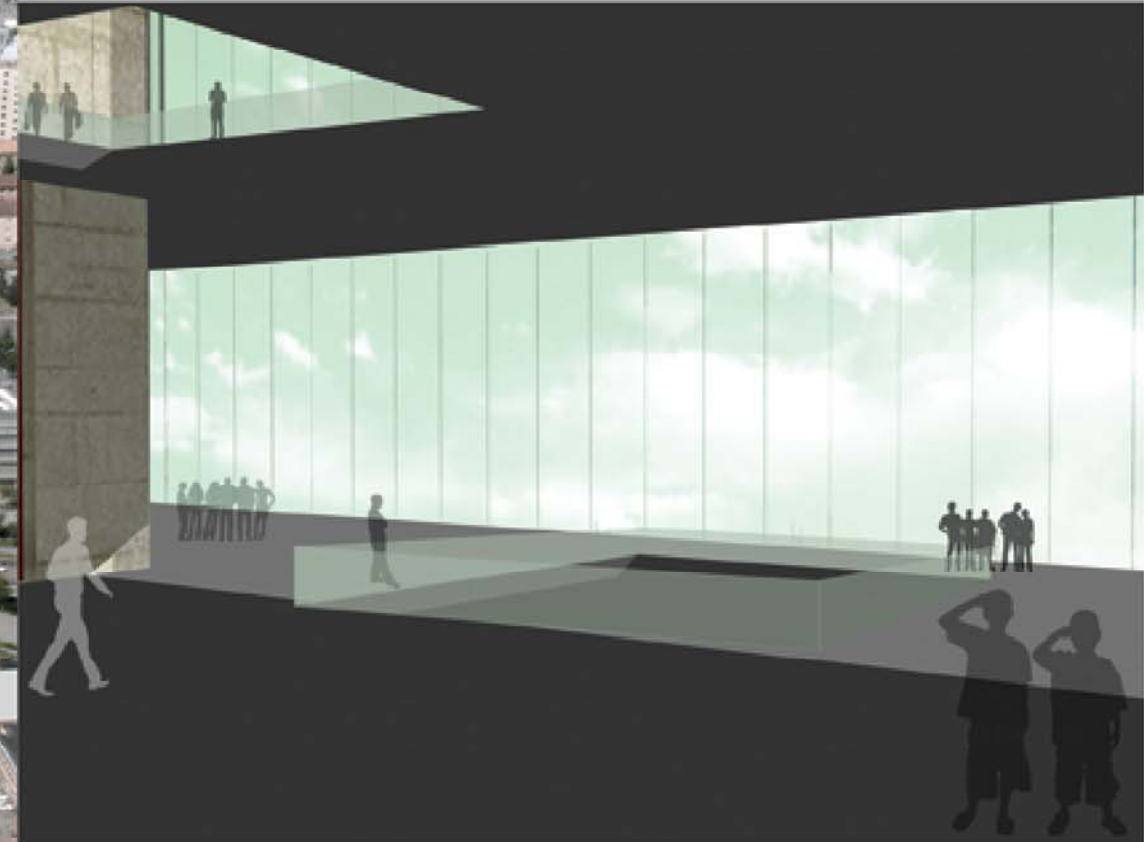
longitudinal section A 1:400



ramp to the up level piazza



perspective inserted in the air



foyer interior perspective