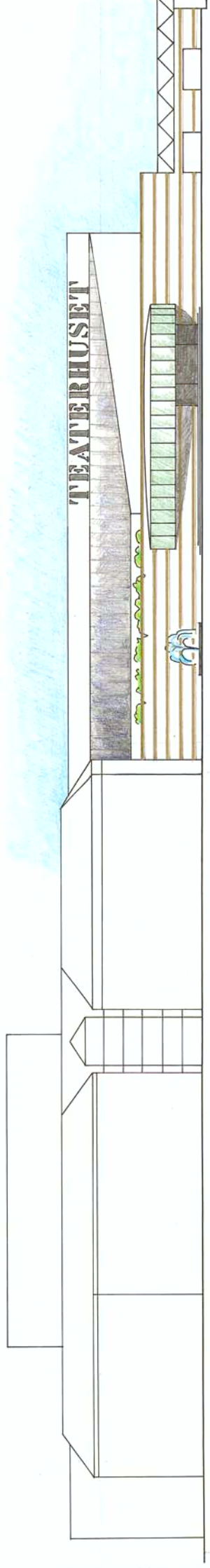
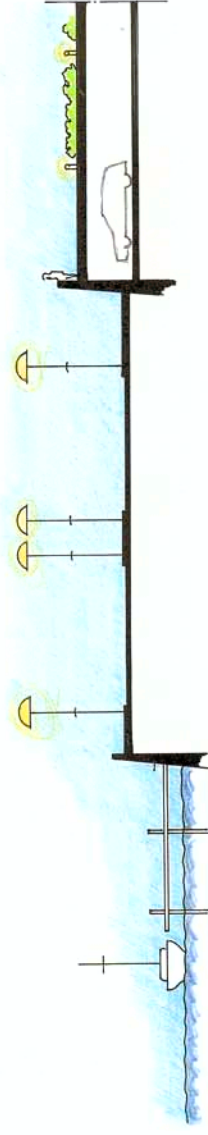
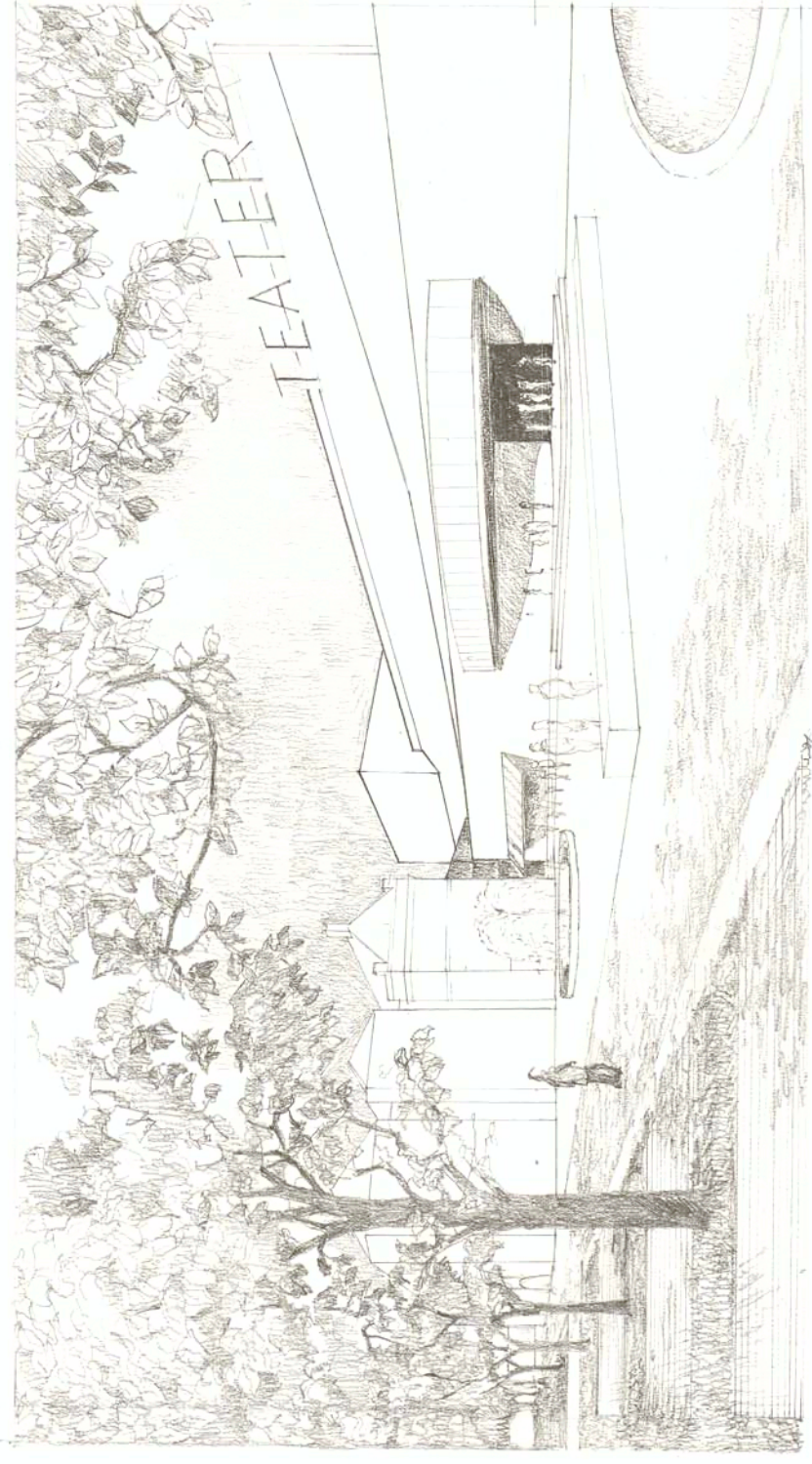


1.	3.
2.	4.

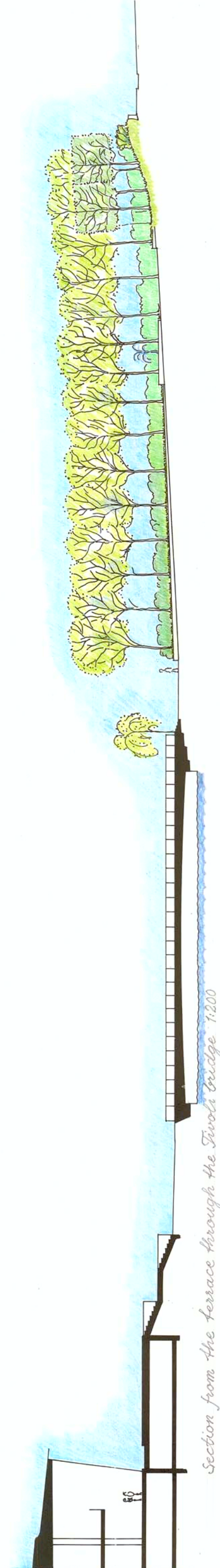


Facade to the south

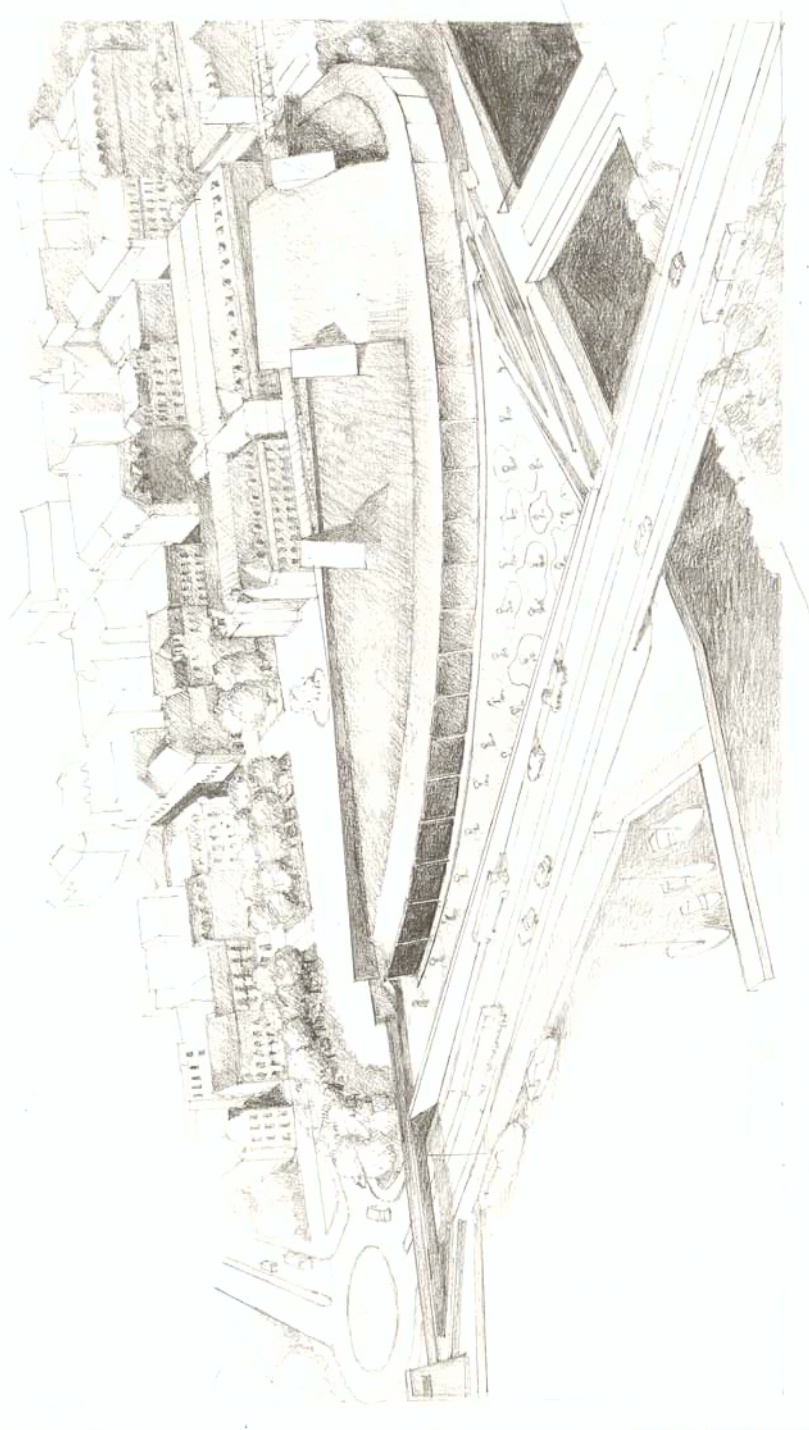
wall materials: white marble with brass metal ribbons



Section from the harbour to the terrace 1:200



Section from the terrace through the Jivola bridge 1:200



The new block of buildings for cultural purposes will connect different parts of the Sundsvall city area. This entry allows the citizens to reach the art centre walking or cycling from the city core, from the harbour or the parks along the river. The existing "Tivoli bridge" is redesigned as a green area.

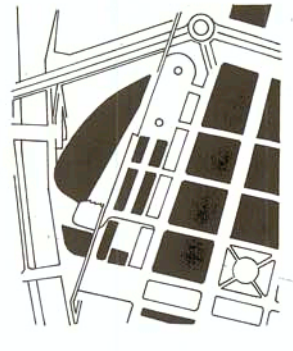
The curved facades of the new building are designed as a contrast to the rectangular city blocks. It also gives the building a soft contour to the parks along the river. At the north and east sides of the new building there is a terrace overdecking the parking garage. A wall along the motor road protects the terrace and the building from traffic disturbances.

The auditoria, rehearsal stages and training rooms are placed in a row connected by the "grand foyer". All the backstage activities are gathered at the same level along the transport passage, which follows an "installation wall" with stairs and lifts. Above the workshops and storages there are roof gardens. The administration is placed at this level along the installation wall. Above it there are ventilation equipment rooms with

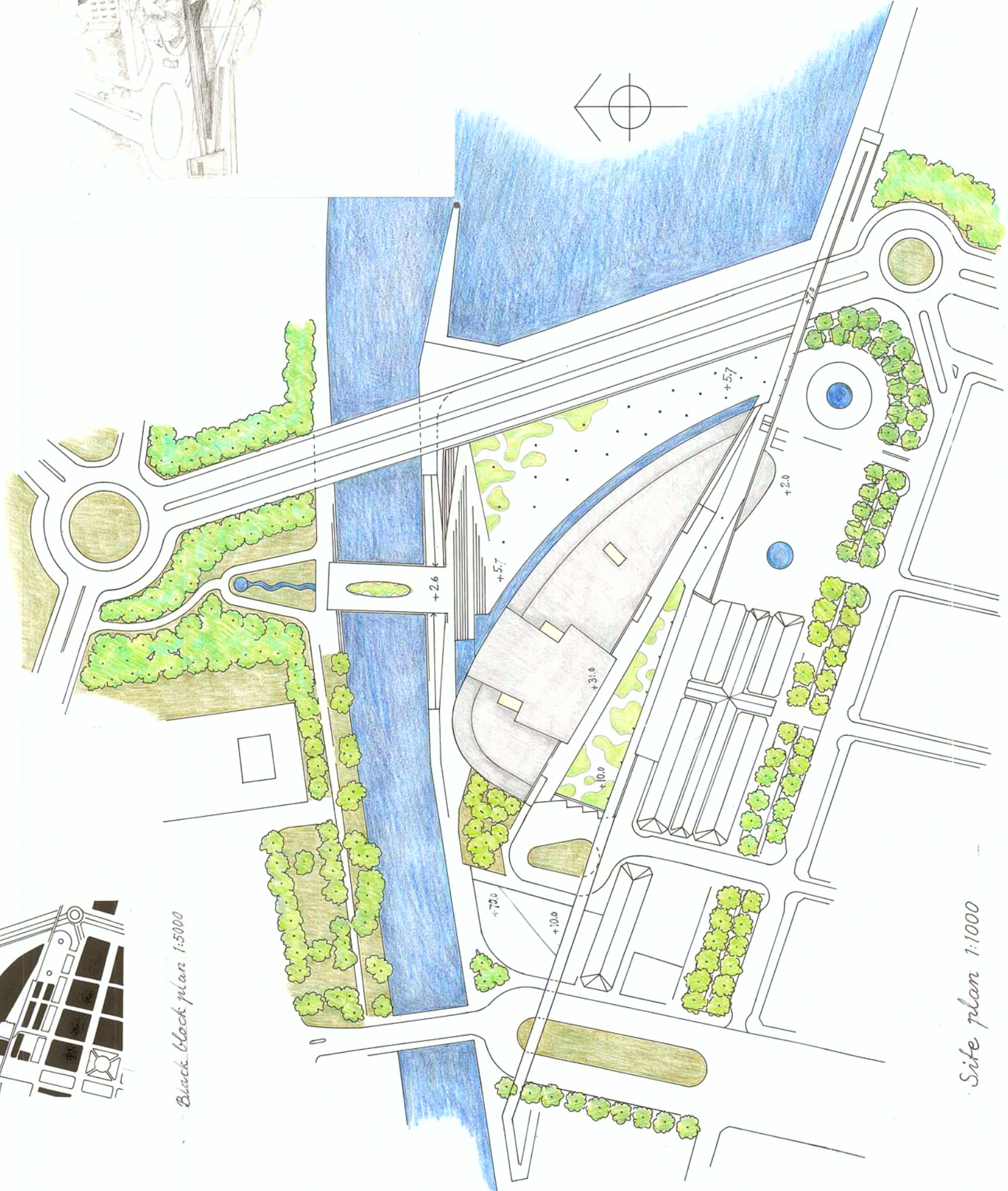
sun energy panels at the roof. The street space between the new and the existing building has a glass roof and the buildings are connected at several levels. Cars go from the Sjöгатan into the garage under the terrace.

In front of the main entrance there is a sunny square well protected from the north winds by the walls of the new building and Kulturmagasinet. In the square there are fountains. Above the entrance the theatre café is facing the square. Along the streetside there are two rows of trees giving shadows to the square.

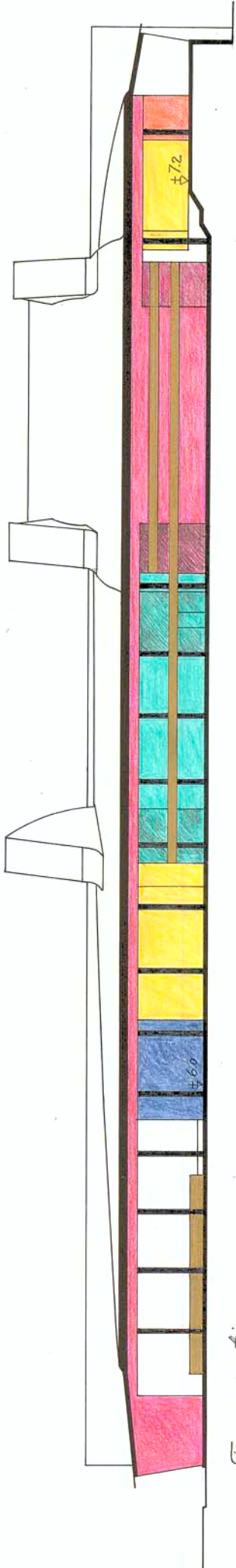
In the entrance hall you follow the wide stairs up to the grand foyer. There you can reach all of the public spaces and you have a good visual contact with the surroundings. From the grand foyer you can see the minigardens at the terrace. In the background there are the townhill and the seawater surface in the east. From the outside the interior coloured walls around the auditoria can be seen through the glass facade - especially when they are lit up in the dark time of the year.



Block block plan 1:5000

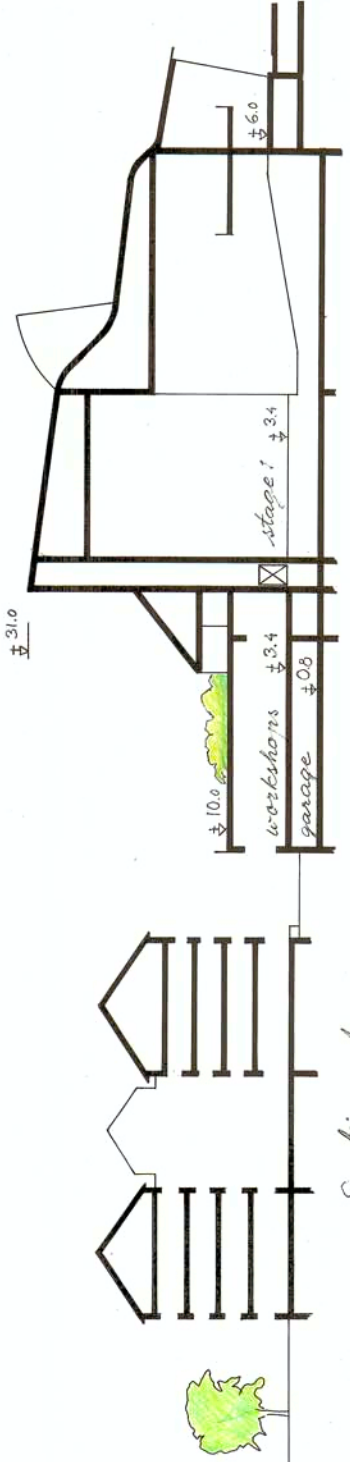


Site plan 1:1000

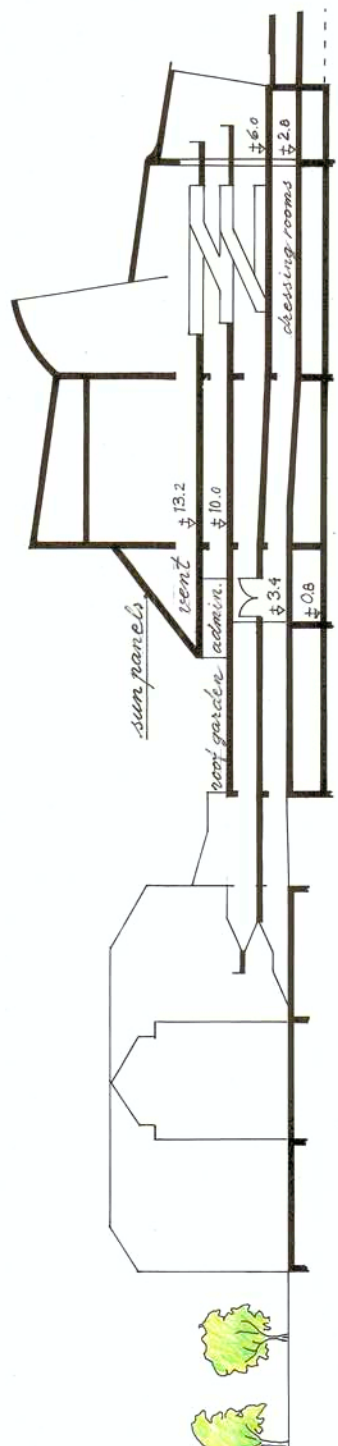


Foyer section

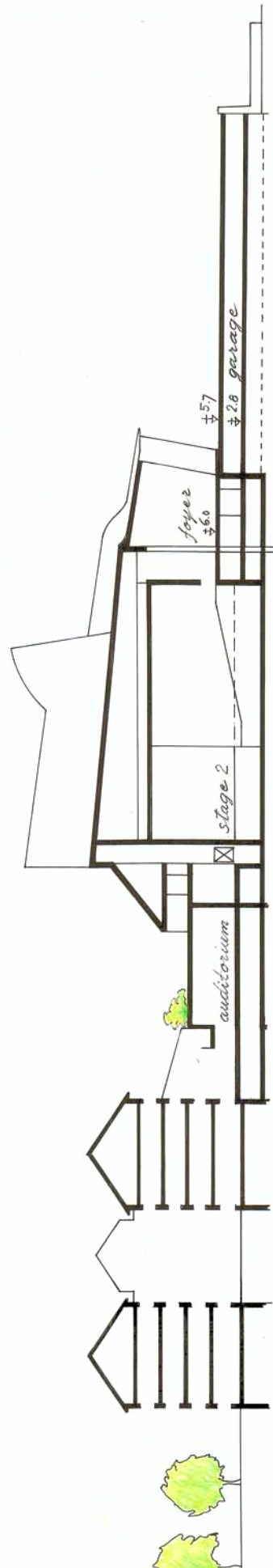
The colours are inspired from a Matisse picture



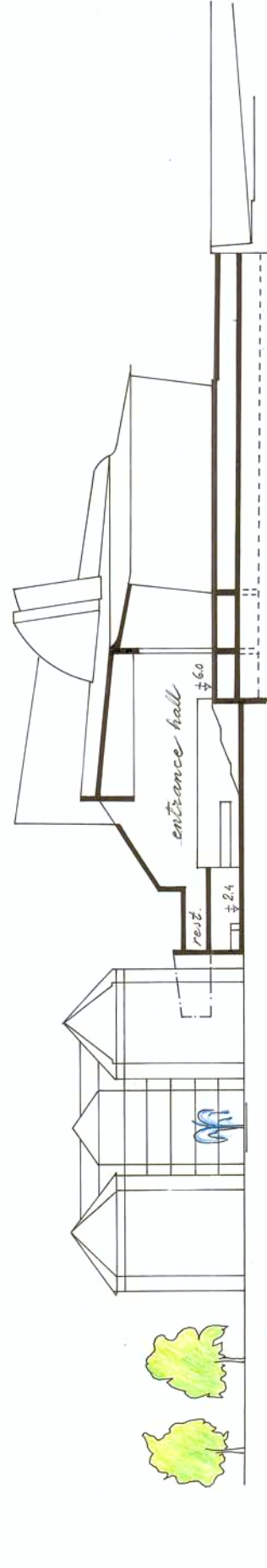
Section A



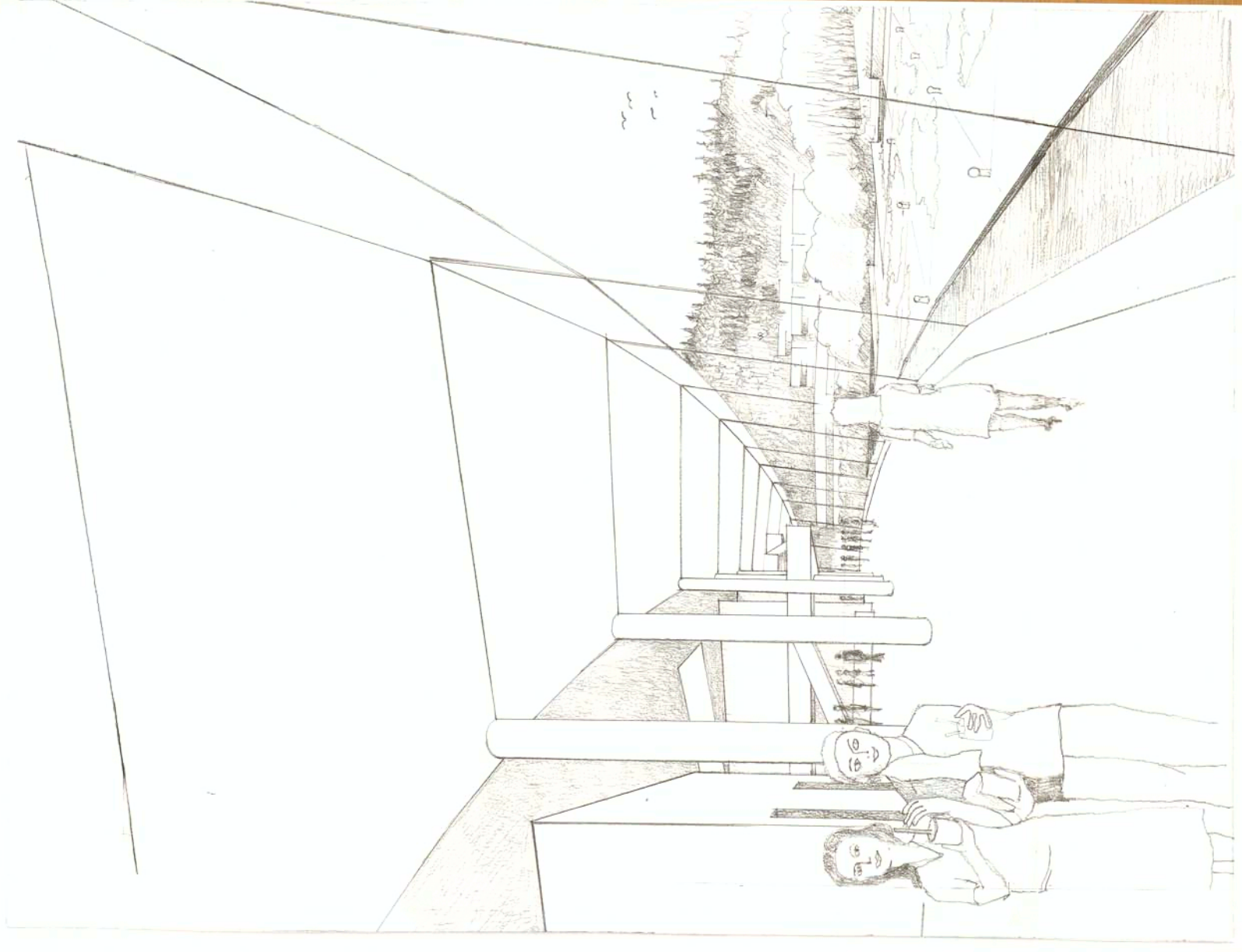
Section B

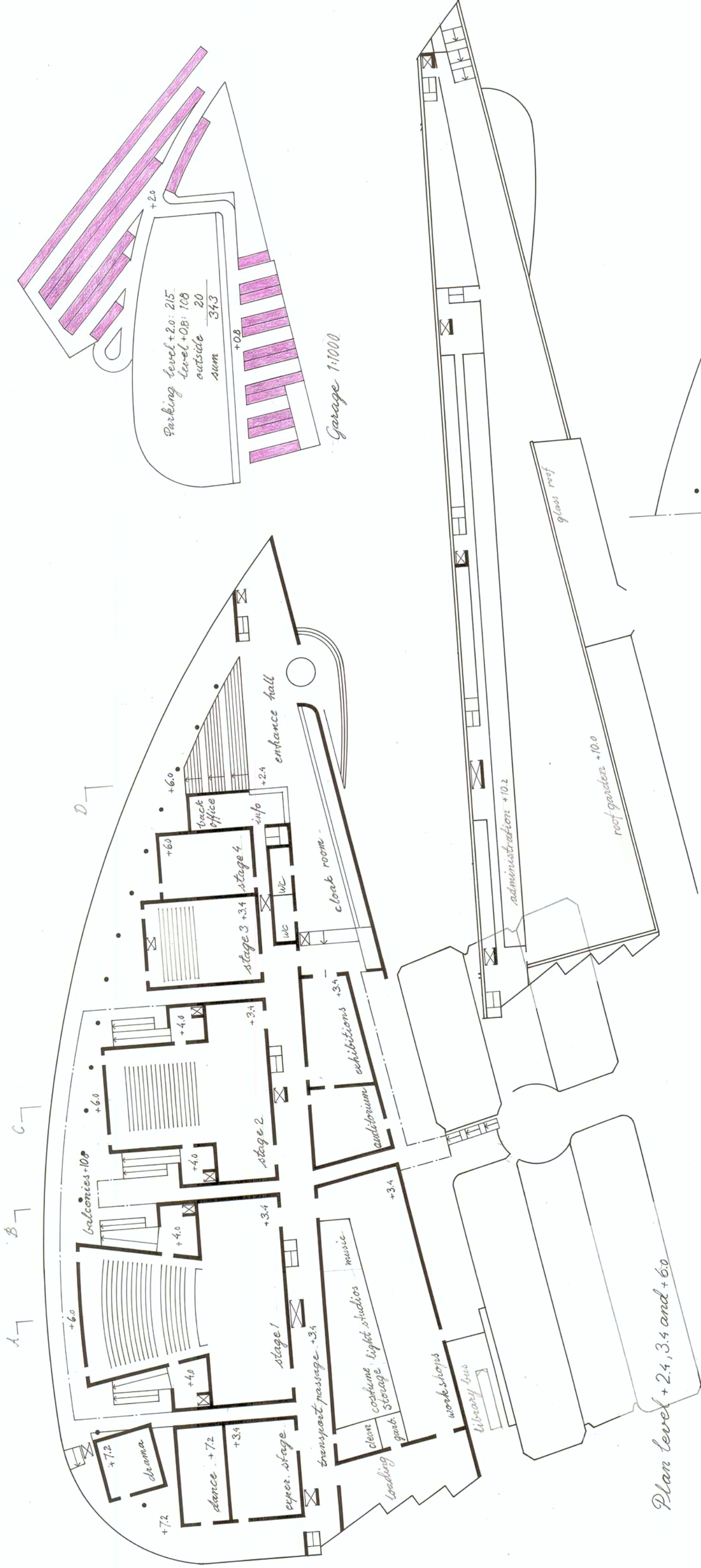


Section C

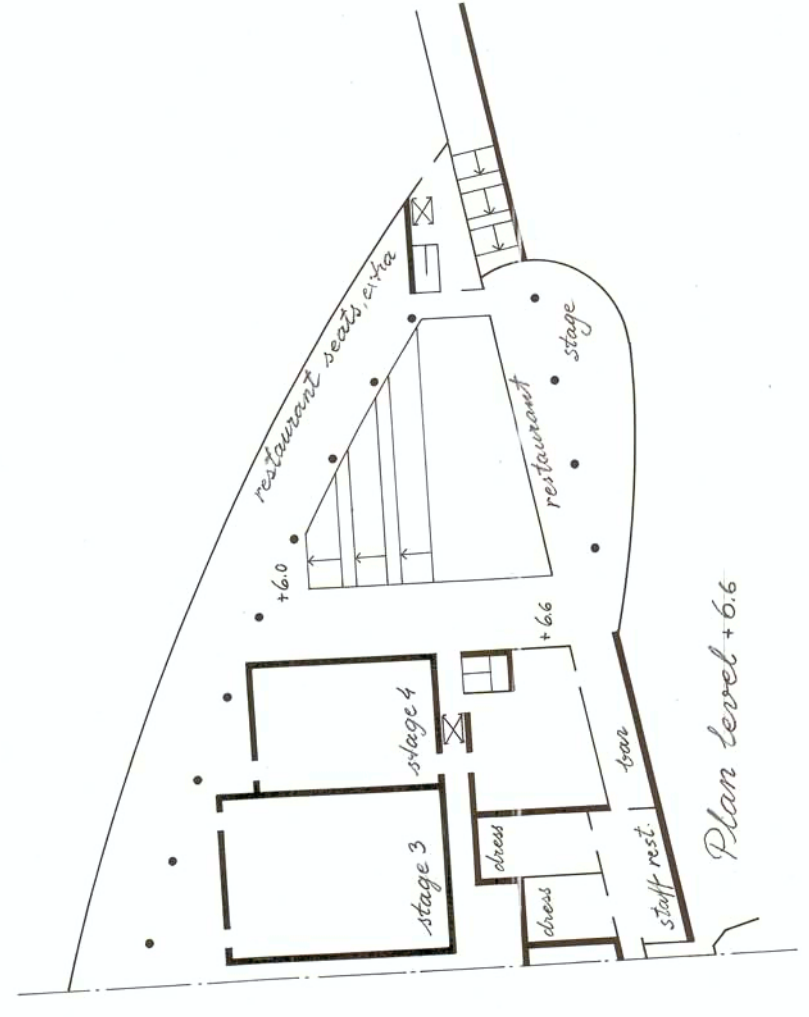
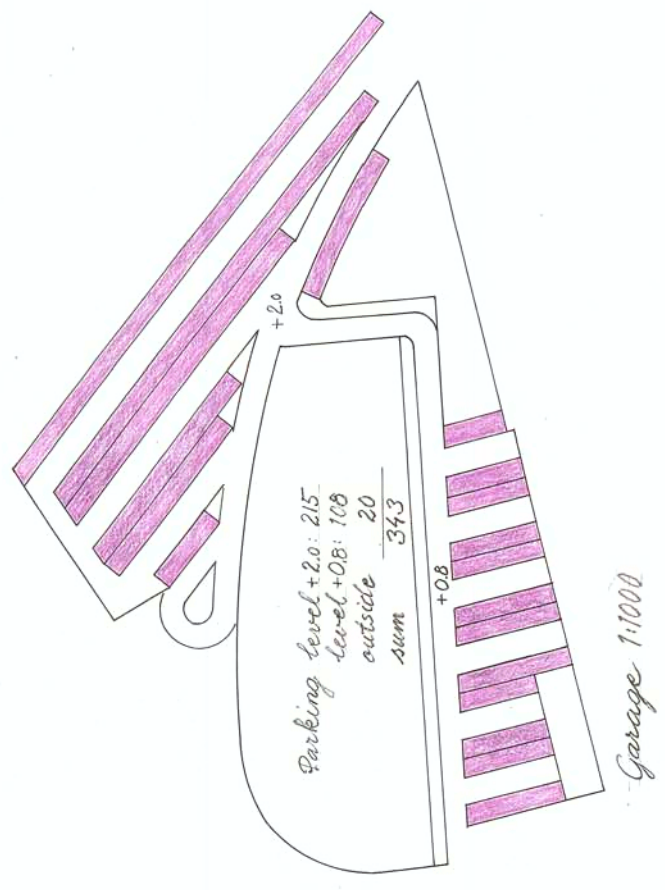


Section D

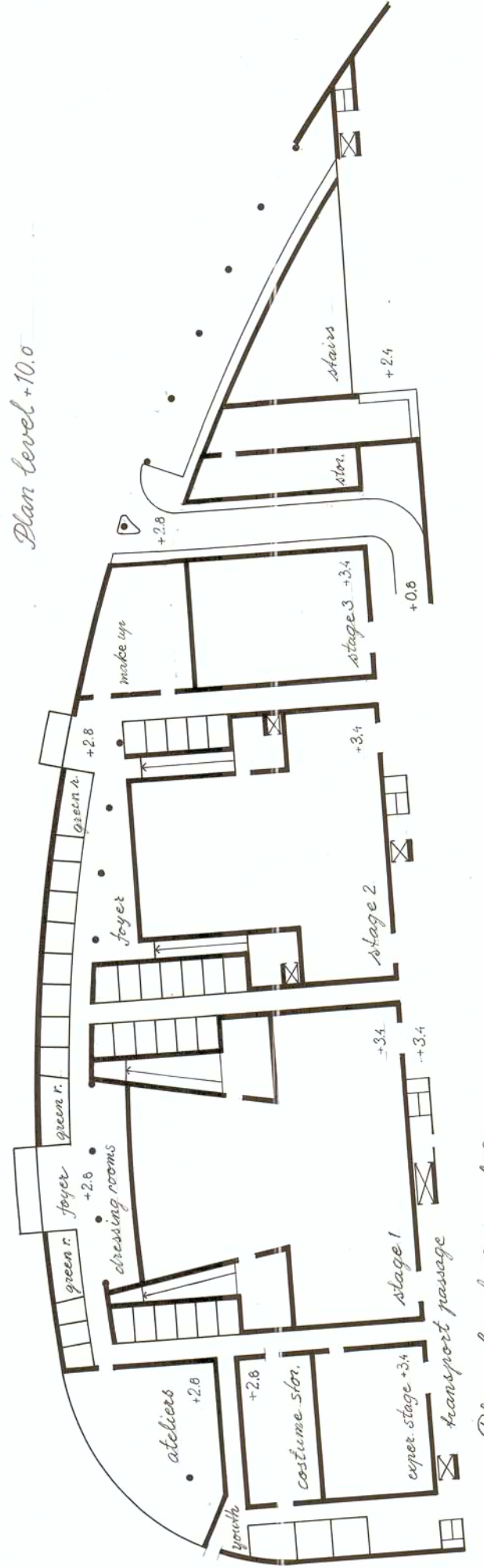




Plan level +2.4, 3.4 and +6.0



Plan level +6.6



Plan level +2.8 and +3.4