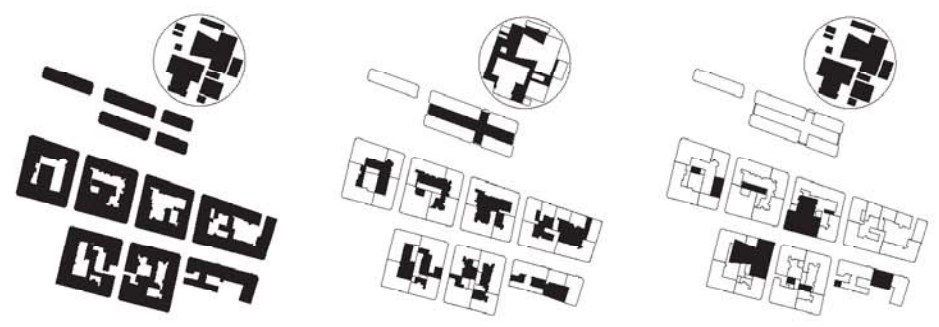


site plan - scale 1:1000

BUILDING VOLUMES

VOIDS AND YARDS

URBAN SCALE



CONCEPT

The historic grid of the urban layout is taken as basis to develop a new concept of urban space. A set of volume differing in height and size are arranged to create a new urban cluster. The correlation between these boxes and the carefully defined spaces between the volumes create a small town in itself – a sequence of sophisticated interior and exterior spaces.

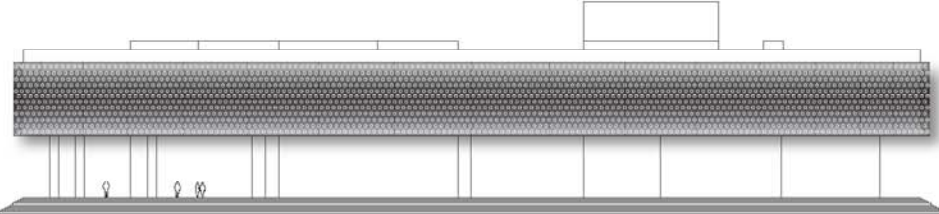
Visitors can experience a very close relation to the environment through the open passages and yards between building volumes. The building is open to all sides with access from any part of town on ground level. On the first floor there is a strong visual connection to the environment: buildings and nature. The ground level is raised above site level with steps surrounding the entire building, supporting the public character of the building.

Choosing the position of the theatre in the urban green-corridor allows the building to stand out from the existing system. Placed in the gap between historic structure and new urban development on the other side of the river, the site is mainly characterized by natural elements, the open space, the river and the sea.

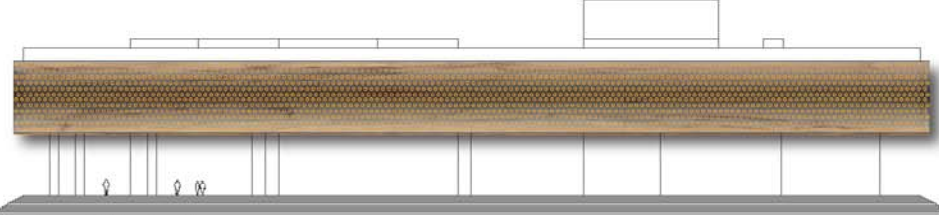
The volumes which are positioned in relation to the urban grid are covered with a very strong and independent geometrical volume: a cylinder. This geometry of the hull dominates the formative impression and appearance of the building. The clearly defines the building as a special public function and positions it outside the historic town.

The facade is made of double glazing with a mesh of LED in between – a media facade. The lighting elements can be used to simply illuminate the building, but also function as a display, promoting the latest plays, musicals or opera or a platform for art-performances. Through the unique concept, the round outline and the special expression of its facade the public character of the theatre becomes manifest in this building.

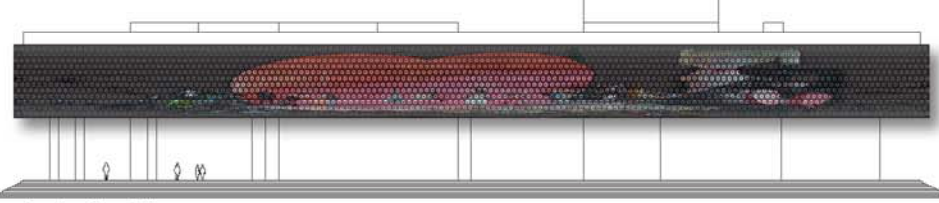
The composition becomes a strong landmark for Sundsvall.



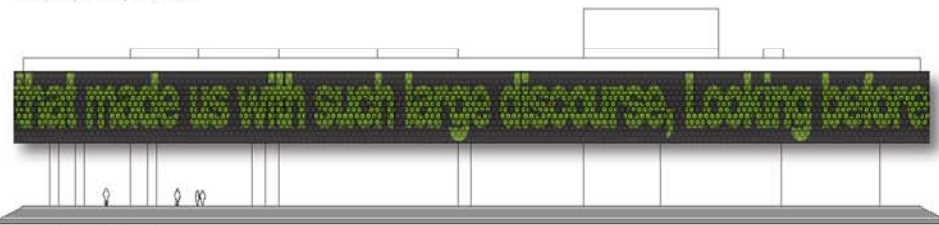
white illumination



coloured illumination



display for pictures

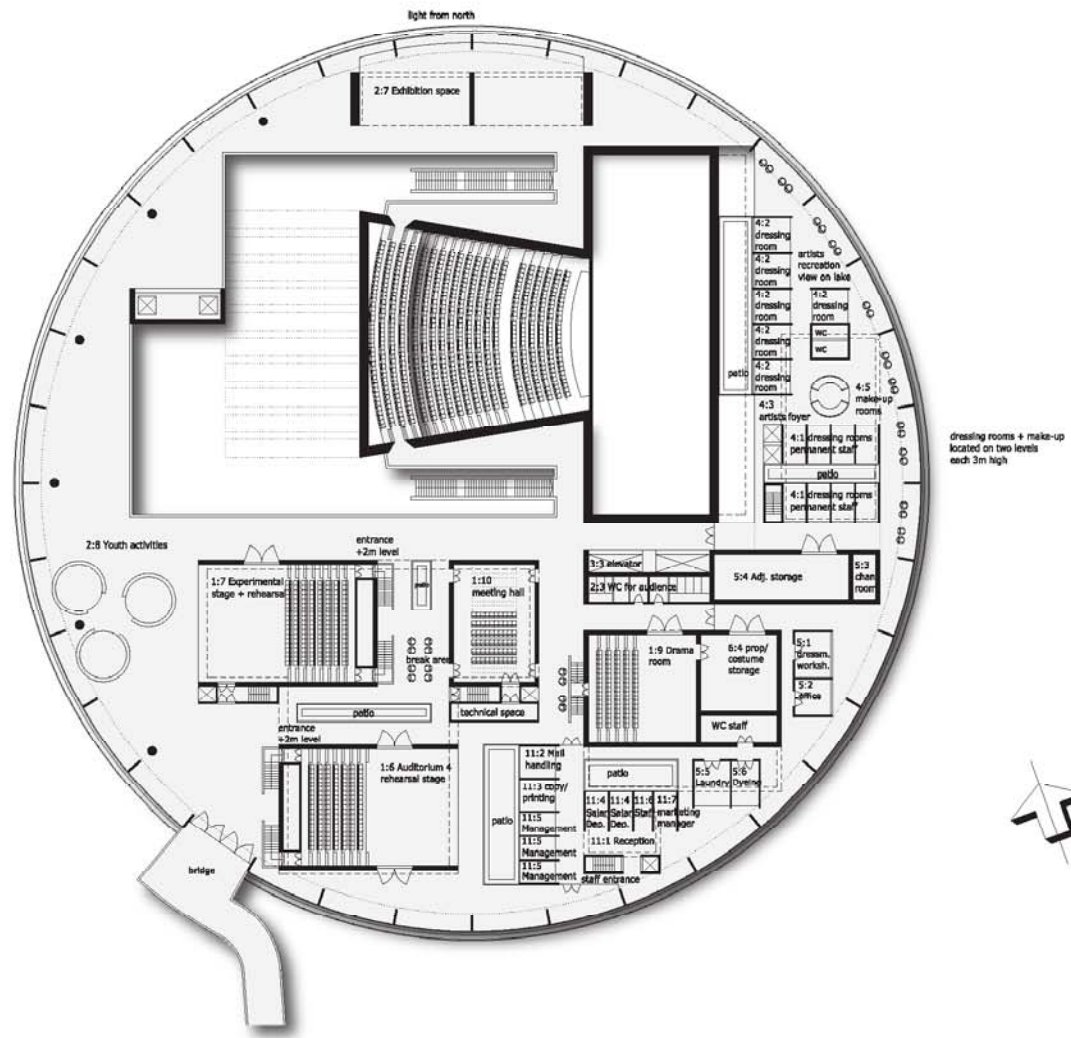


display for text

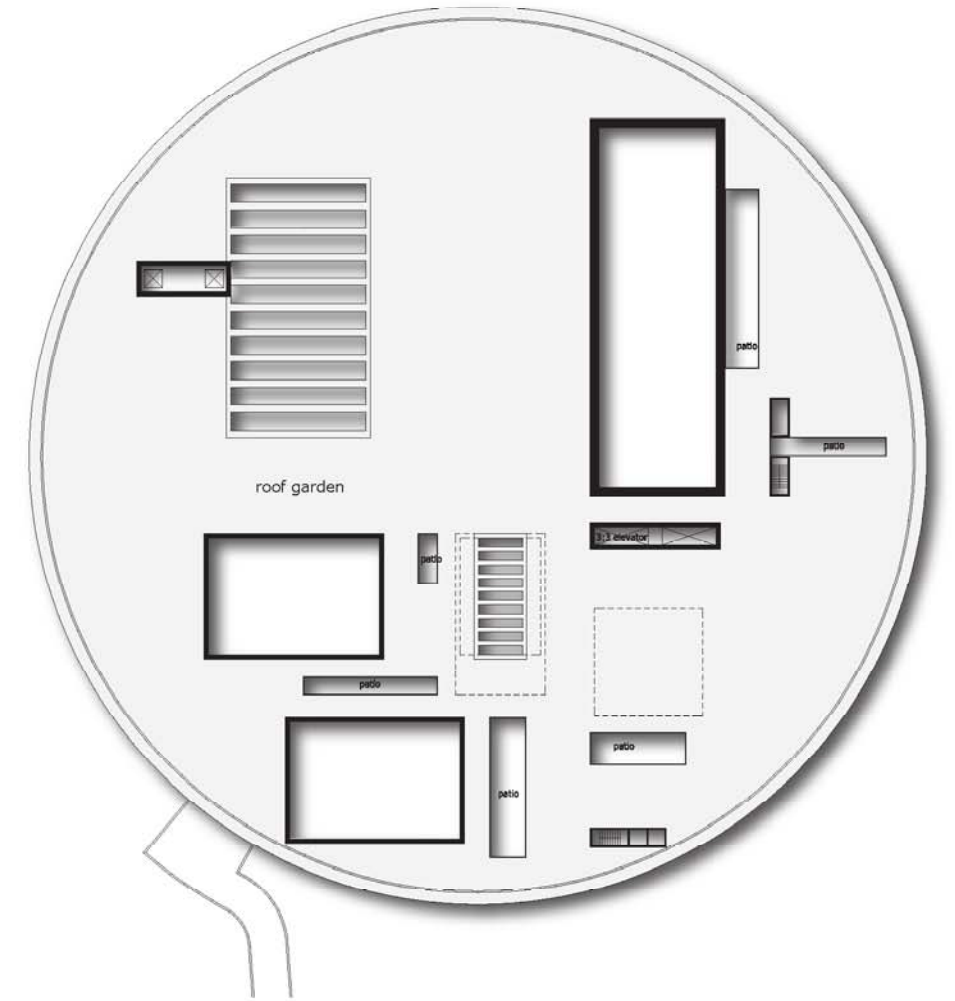


reference media facade

first floor plan - scale 1:400



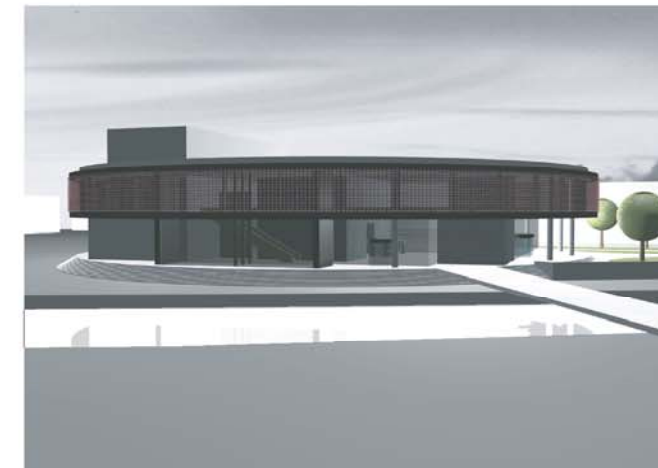
roof floor plan - scale 1:400



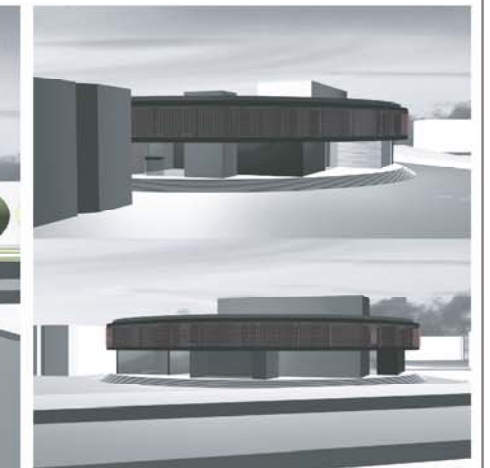
artists' dressing rooms and make-up



patio between Auditorium 4 and offices

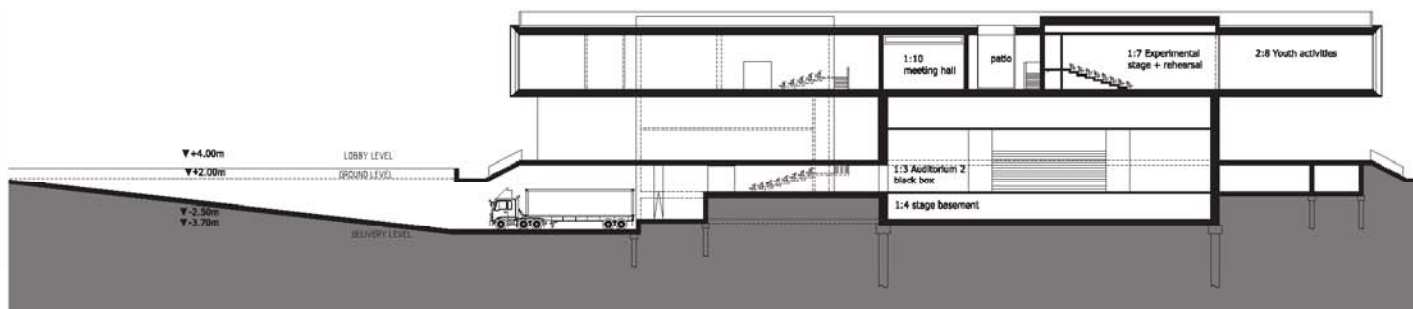


view from north



views from south and east

section B-B - scale 1:400



section C-C - scale 1:400

