



View from Odengatan/Sveavägen



Aerial view

Flow

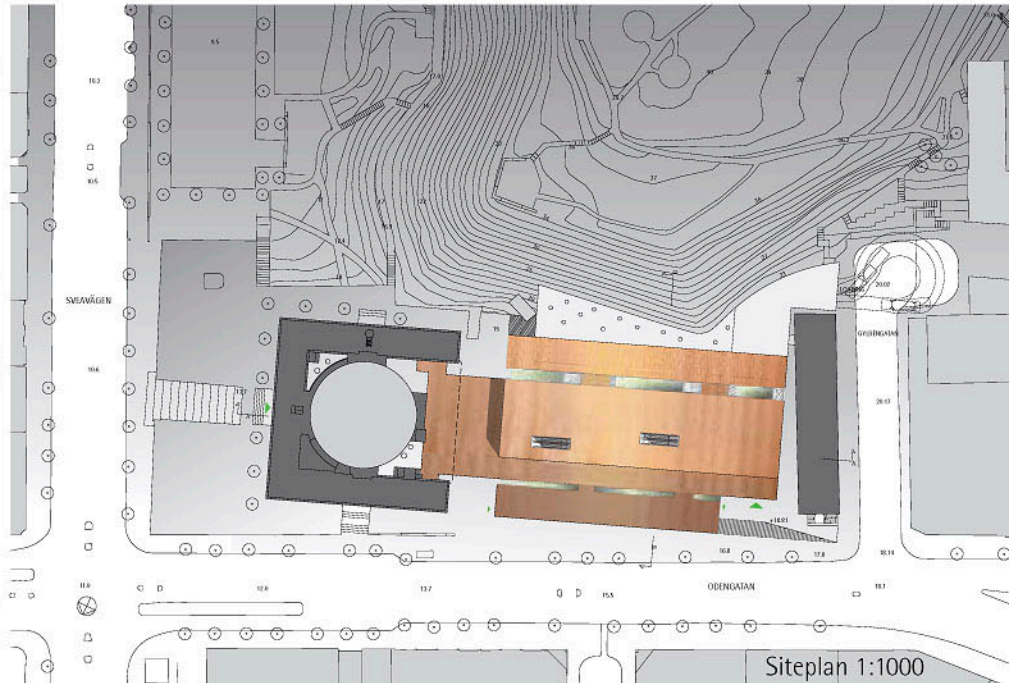
Asplund's library is provided with two main advantages for an extension: First, the younger west wing with its axial access offers a neutral and convenient connecting space. Second, the level of the rotunda floor (+18,81) levels Odengatan at Lallerstedt's building. These conditions have generated a long and wide nave, extending the core of Asplund's building. The new library has large, generic spaces and intimate relation between staff and public. The scheme with a main corpus flanked with aisles relates to Asplund's. Mainly separated from the hill, the reading areas will be provided with good daylight conditions.

Flexibility

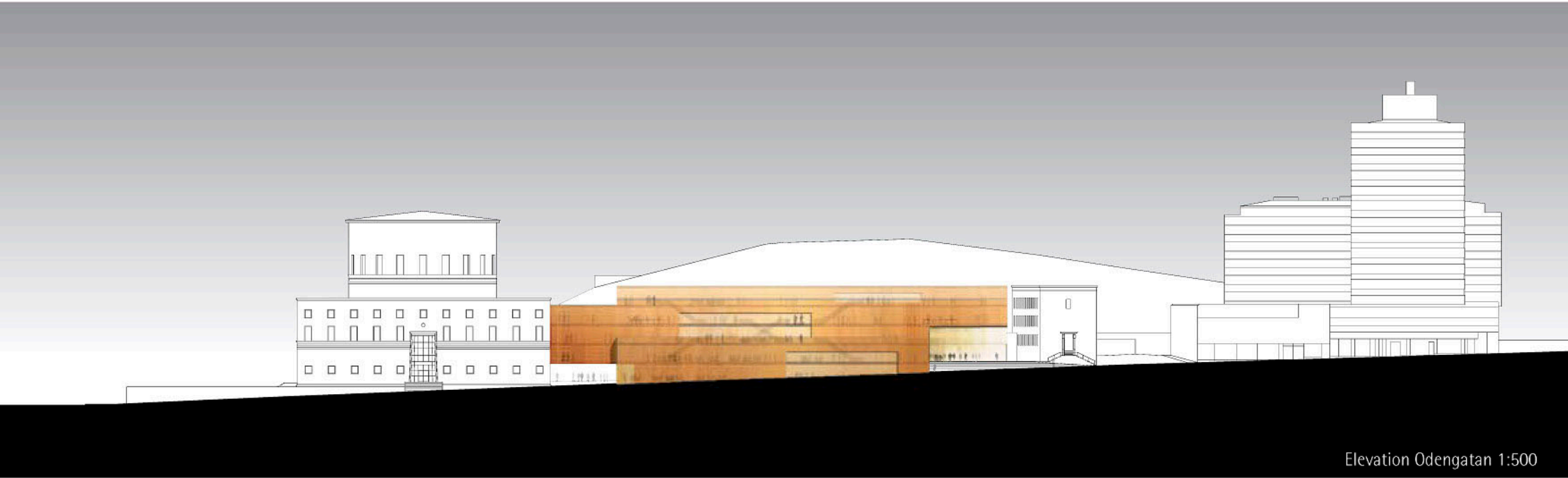
Prolonging Asplund's axis as the main orientation preserves the authority of the old entrance. A new entrance framed by Lallerstedt's building and by the restaurant wing, connects the complex to Odenplan and, as an option, to the galleria on the basement level. The structure provides the plan with numerous possibilities to divide and connect different sections. The learning zone on +15,21 can operate separate or together with the main lecture area, the restaurant is an independent structure that connects to the main building on two levels, and the entrance zone can function as a 24-hours zone with or without the news zone behind.

This is not a monument.

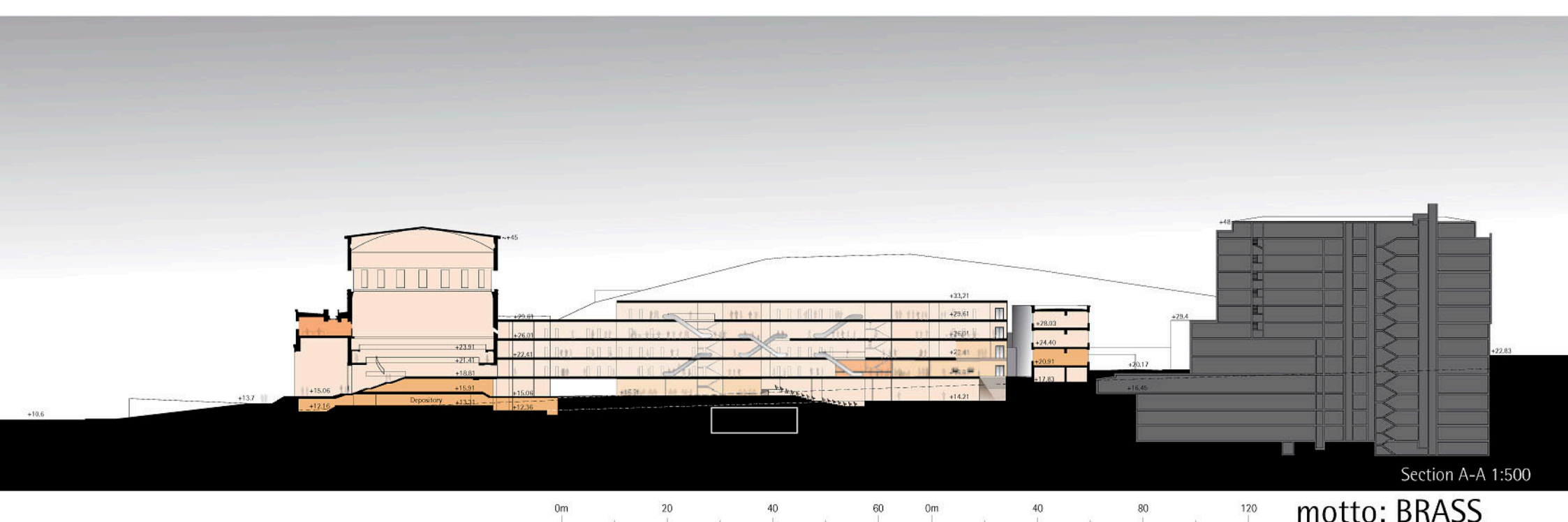
It is a building dedicated to its role as an annex, adapted in Asplund's and Lallerstedt's framework. The ensemble creates an urban fabric with the new building as the public generator in the middle. With the restaurant in a protrude setting, Asplund's principle with bazaars as a vivid façades towards the public life is brought around the corner. A network of brass covers the glass panels behind. In the interior, a similar web of woven straps of leather reflects the brass and covers the interior walls with a smooth and warm surface.



Siteplan 1:1000



Elevation Odengatan 1:500



Section A-A 1:500



3D Section B-B

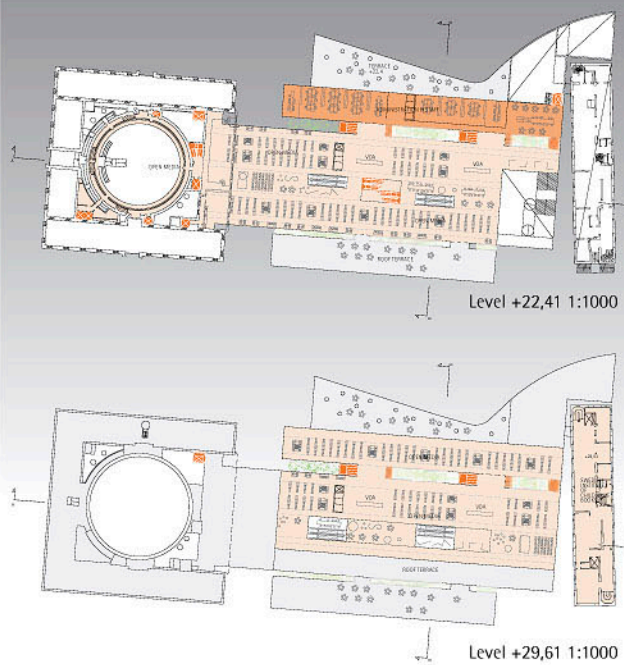


View from Odenplan

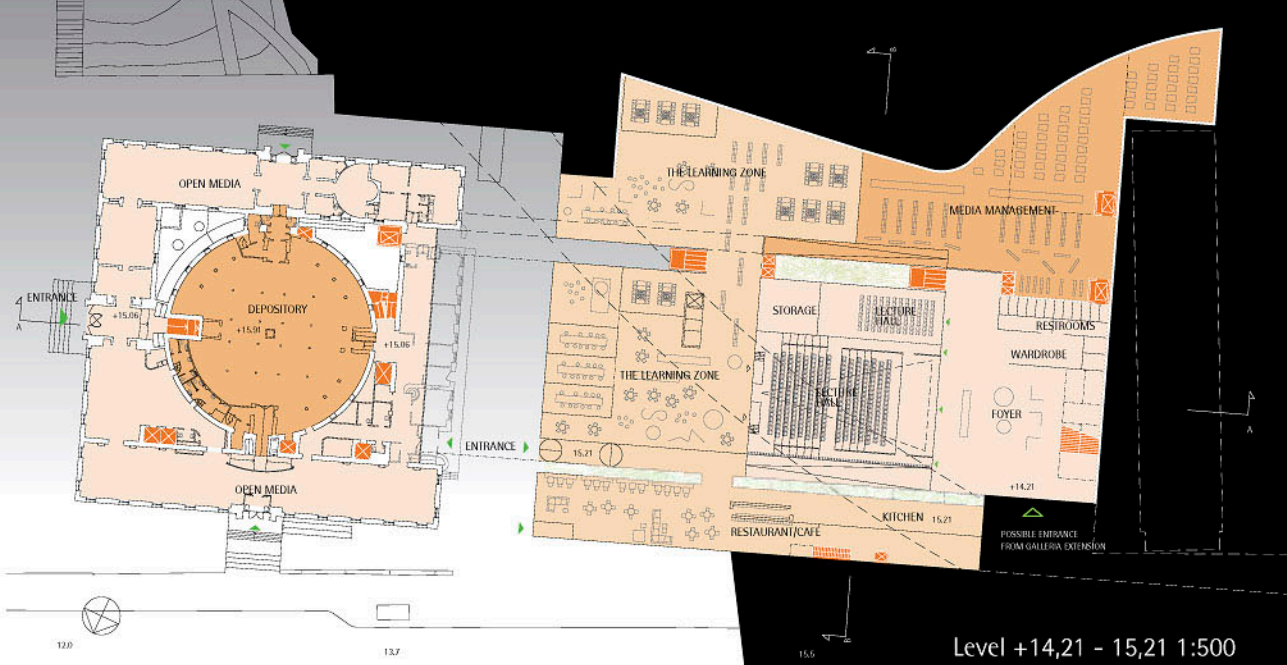
Program Areas

Program	Gross	Mua
Asplund	7500 m2	6410m2
Extension	18100m2	15500m2
Annex3	2400m2	2050 m2
Total:	28000 m2	23960m2
Asplund:		Mua
Public areas		4510 m2
Depository/Media management		1000m2
Administration/Staff		900 m2
Extension:		Mua
Public areas		13200 m2
Depository/Media management		1200m2
Administration/Staff		1100 m2
Annex 3:		Mua
Swedish Inst. for Children books		1450 m2
Depository/Media management		600 m2

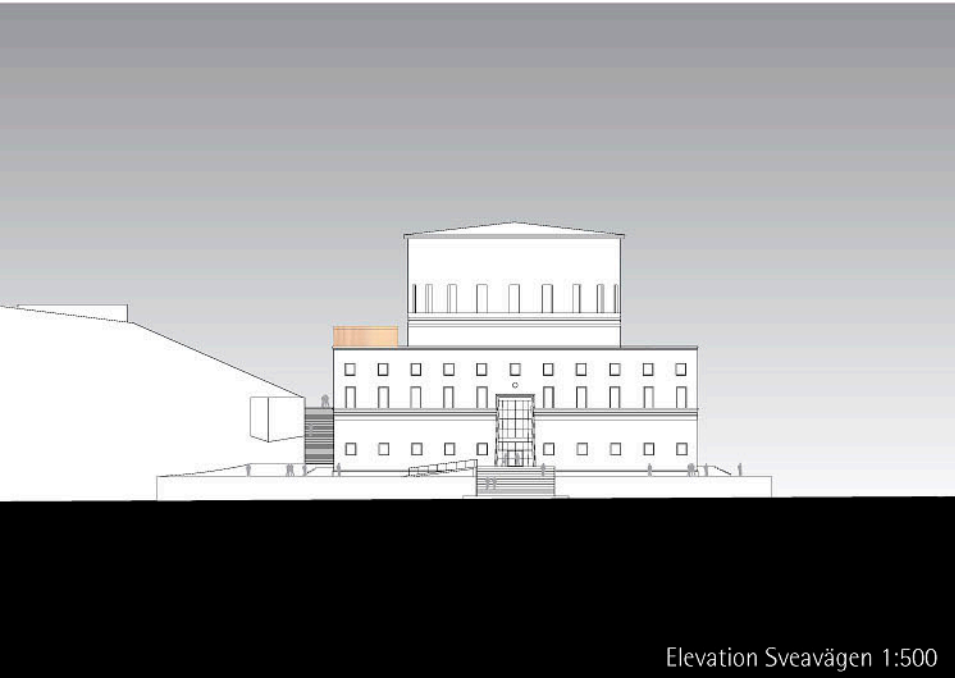
- Vertical Circulation
- Administration & Staff
- Depository & Media Management
- Public Areas 24h Zone
- Public Areas



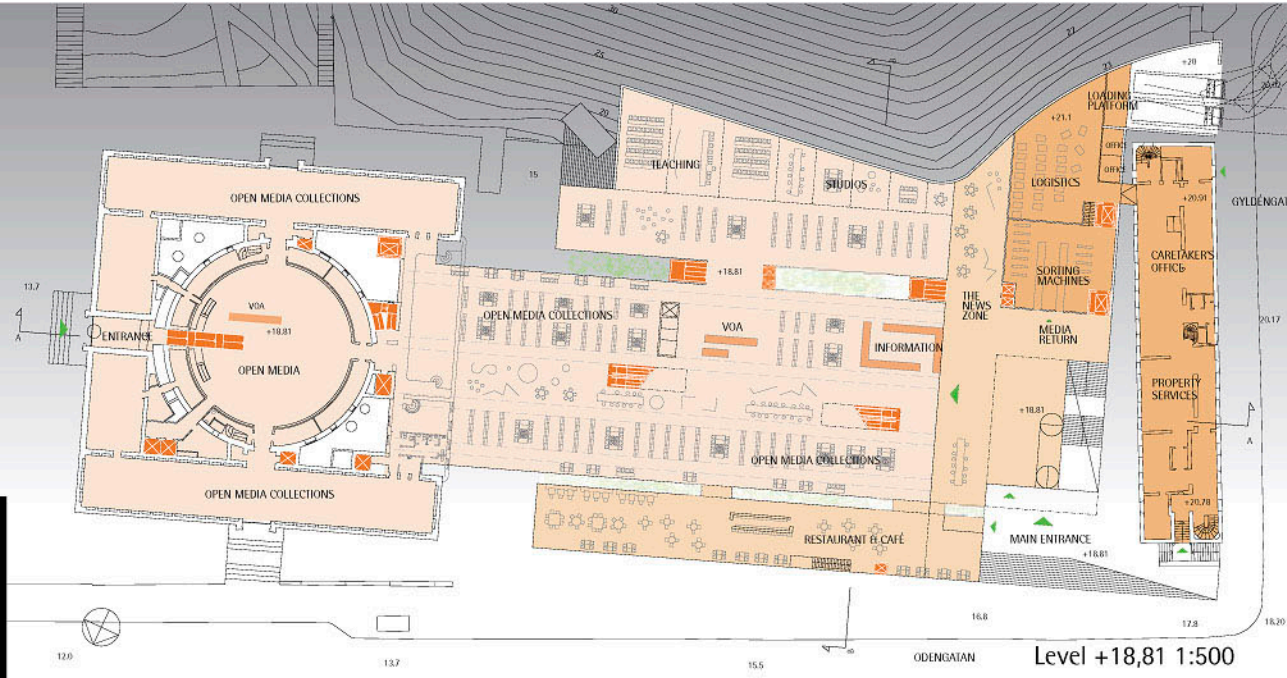
Level +22,41 1:1000



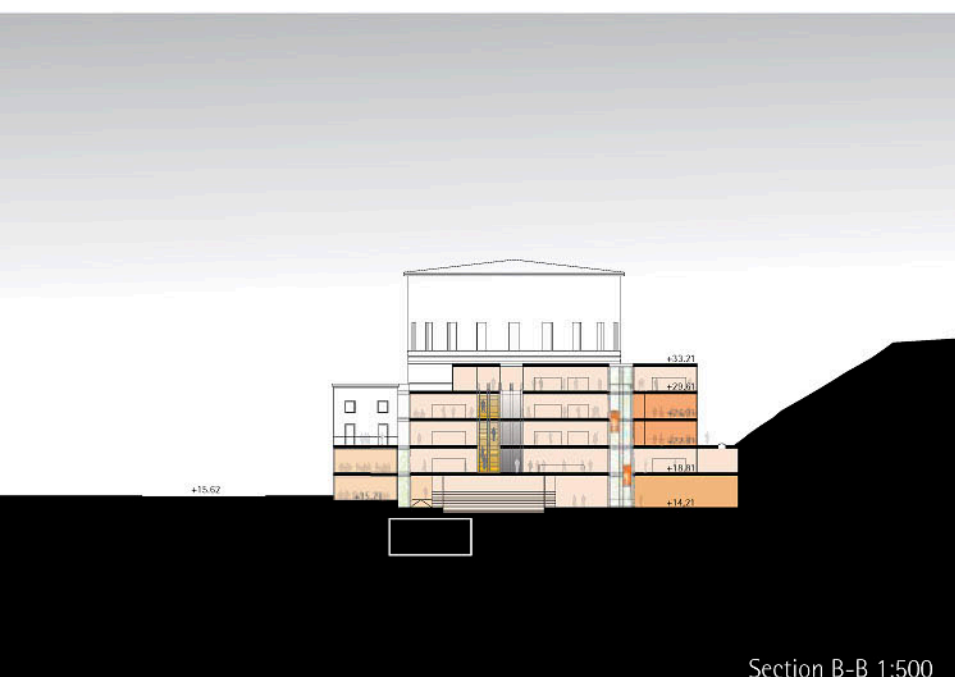
Level +14,21 - 15,21 1:500



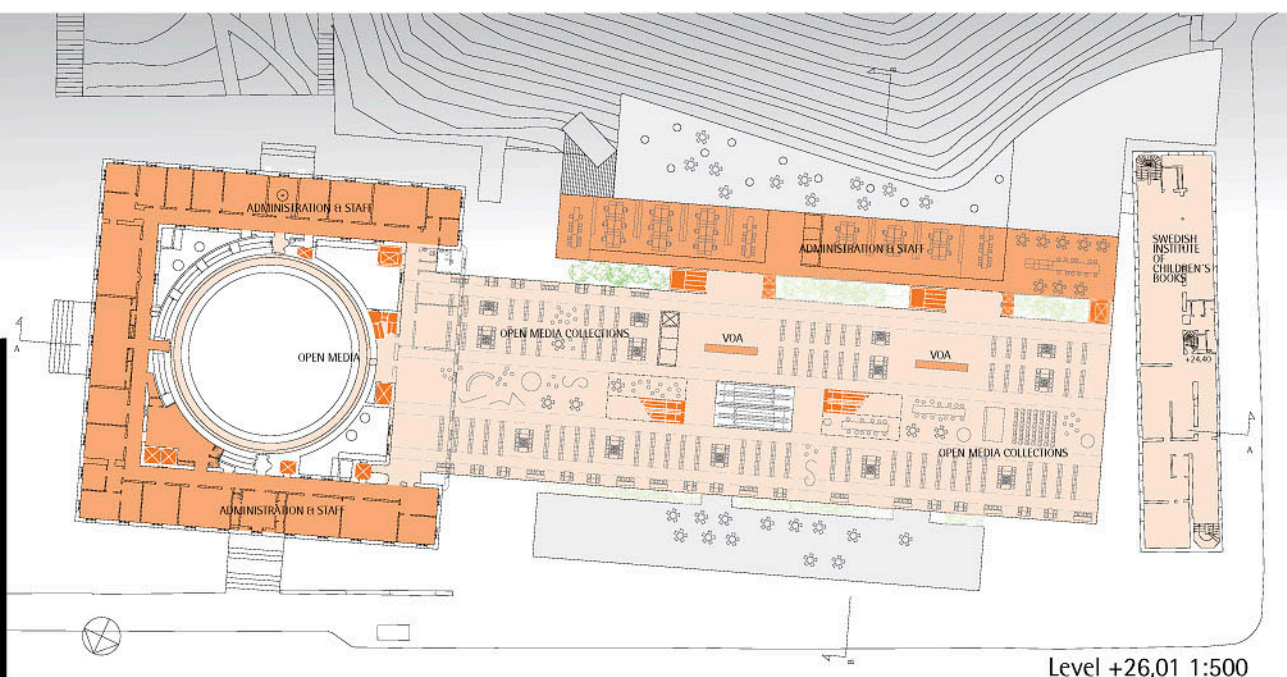
Elevation Sveavägen 1:500



Level +18,81 1:500



Section B-B 1:500



Level +26,01 1:500