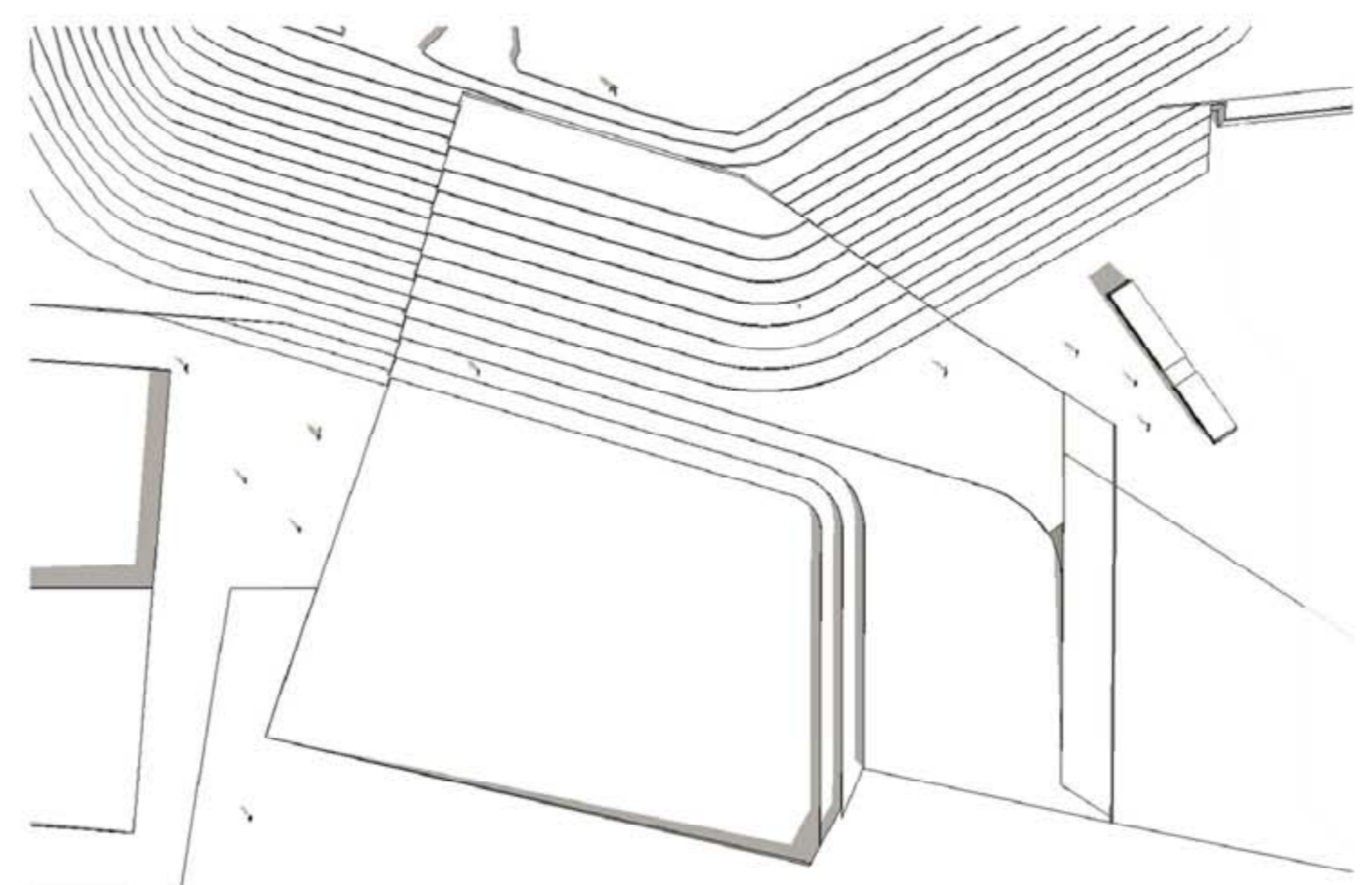


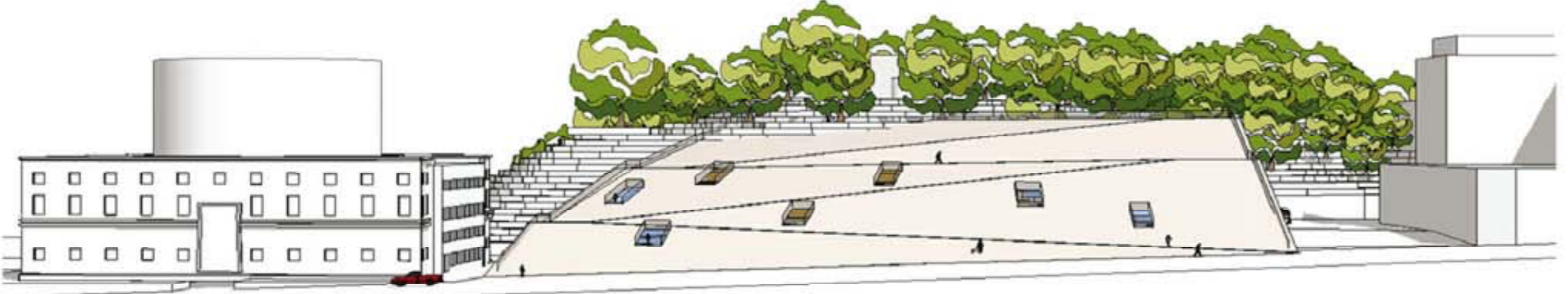
SITE plan 1:1000



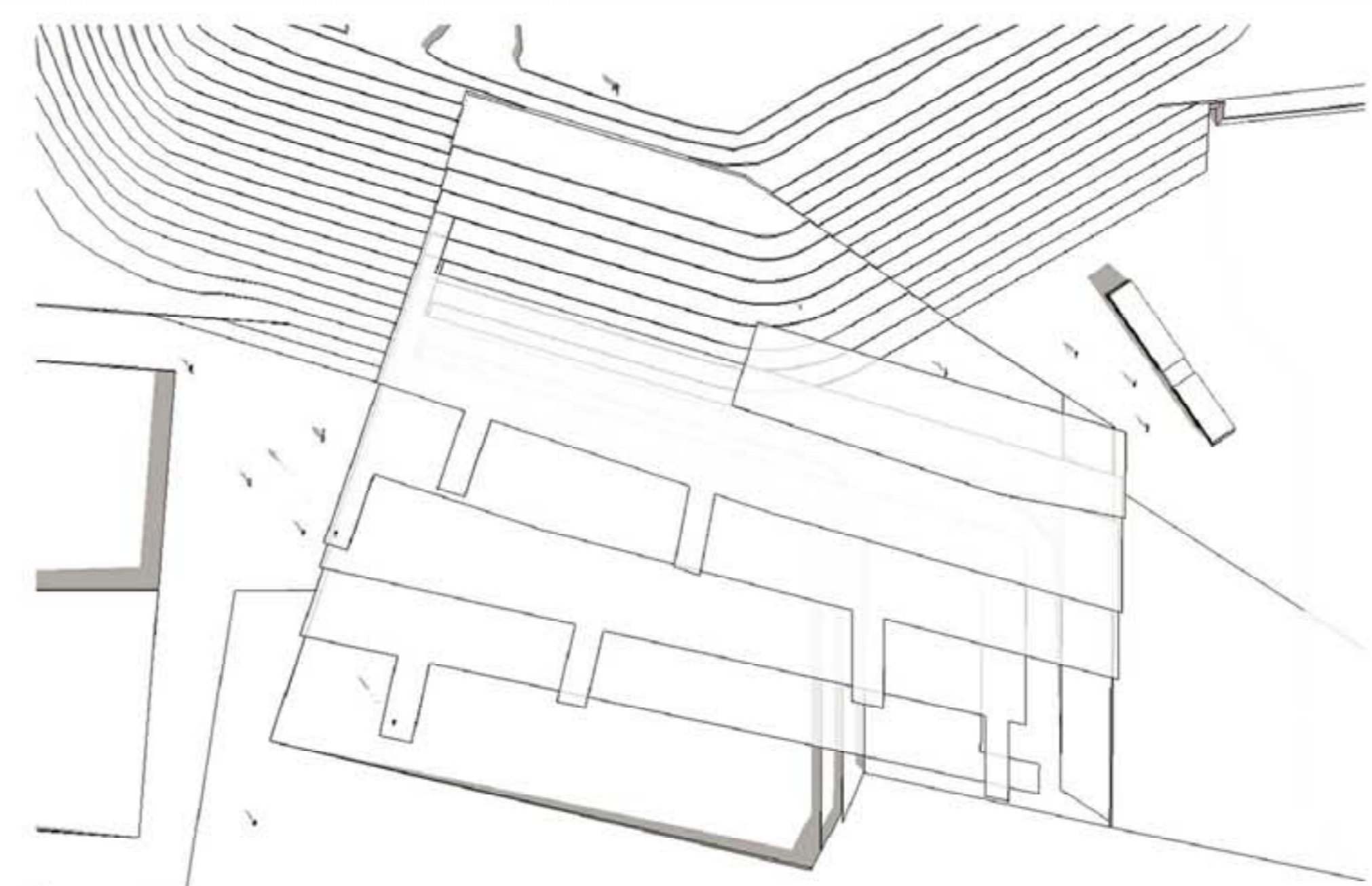
GROUND (terraces) 1:500

AREAS DISPONIBILITIES:

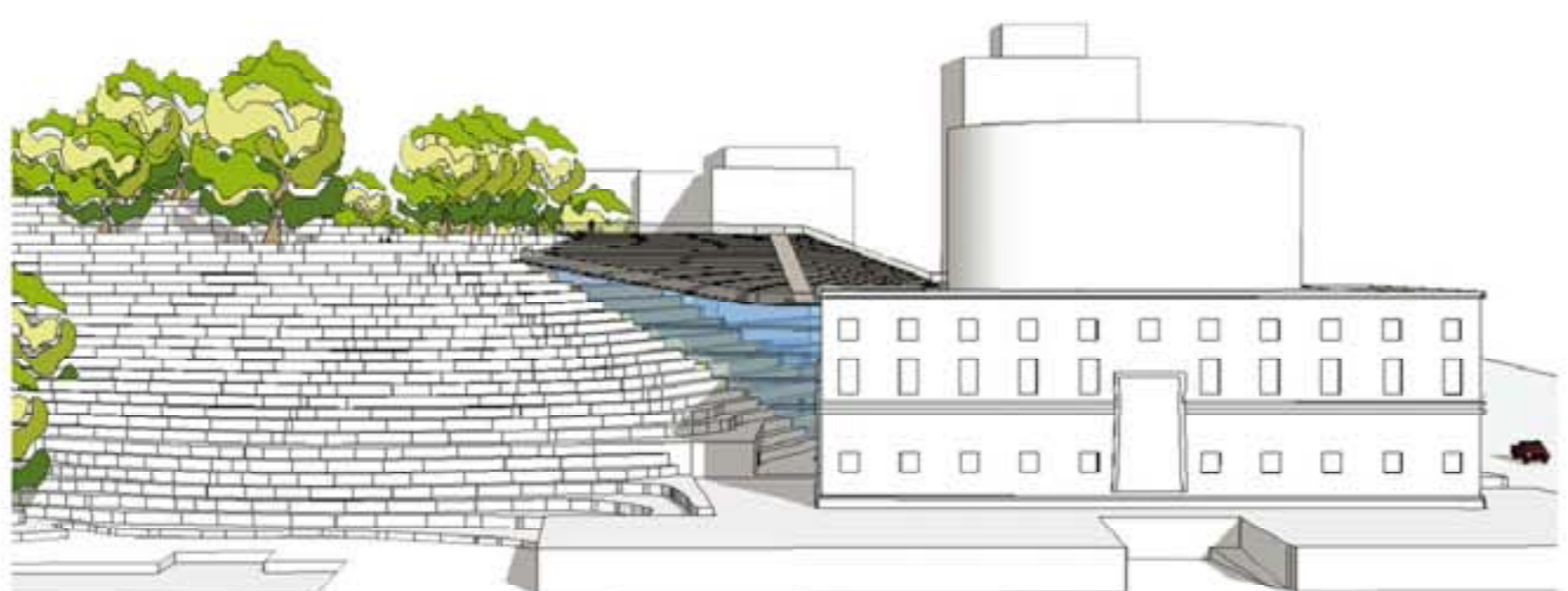
- 1- TERRACES (2500m<sup>2</sup>)
  - LECTURE
  - BOOK'S SHELVES
  - STUDY
- 2- FLOORS (10000m<sup>2</sup>)
  - SUBJECT AREAS
  - OPEN MEDIA COLLECTIONS
  - ADMINISTRATION (2000m<sup>2</sup>)
  - SWEDISH INSTITUTE OF CHILDREN'S BOOKS (1200m<sup>2</sup>)
  - CAFE / RESTAURANT
- 3- UNDER THE HILL (4000m<sup>2</sup>)
  - DEPOSITORY AND MEDIA MANAGEMENT (2700m<sup>2</sup>)
  - AUDITORIUMS / STUDIOS / MEDIA ROOMS (1300m<sup>2</sup>)
- 4- ASPLUND LIBRARY (7500m<sup>2</sup>) - UNCHANGED
- 5- MAIN BAZAAR (1000m<sup>2</sup>) - TO STUDY
- 6- UNDERGROUND CONNEXIONS BETWEEN BUILDINGS - TO STUDY



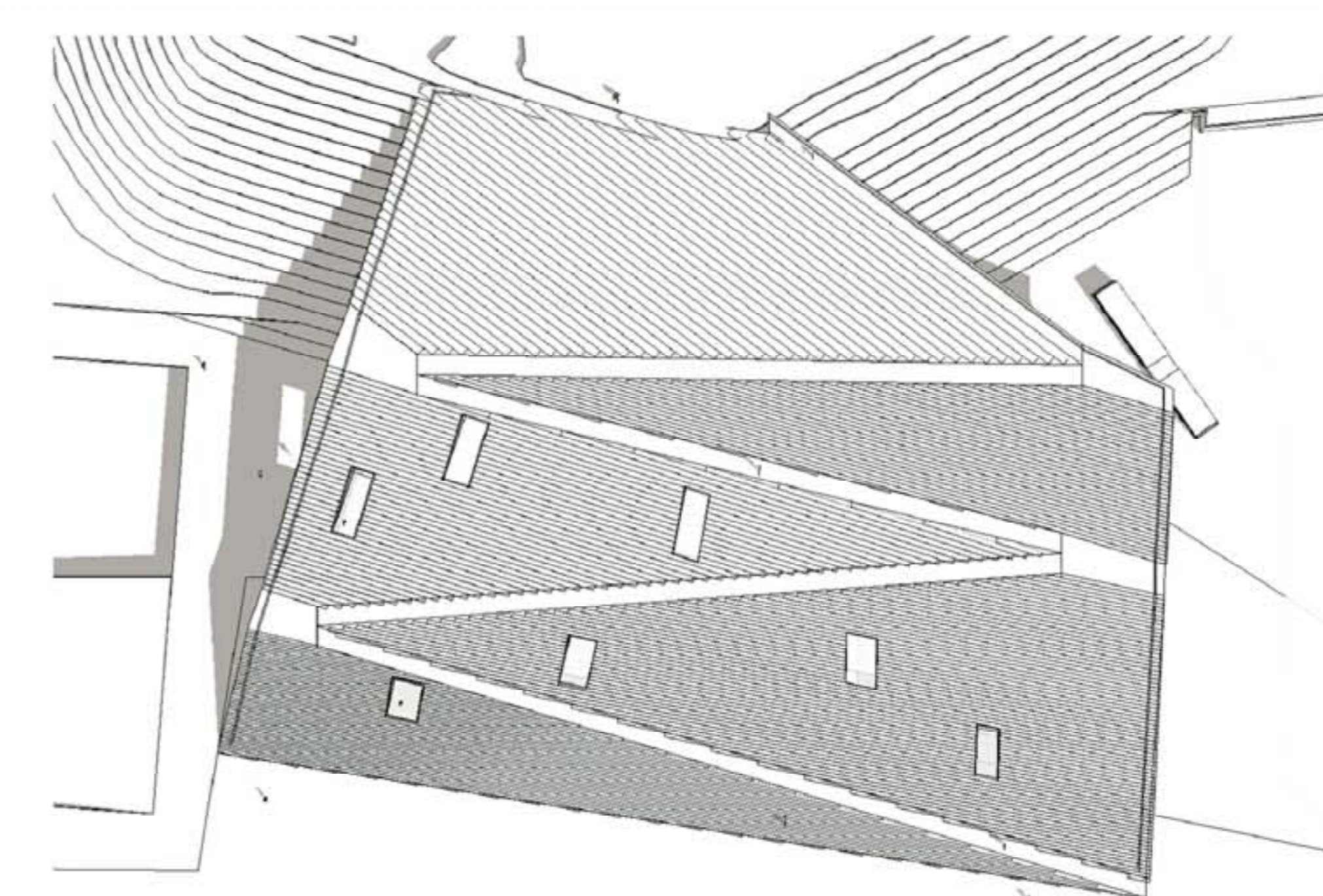
Elevation from Odengatan 1:500



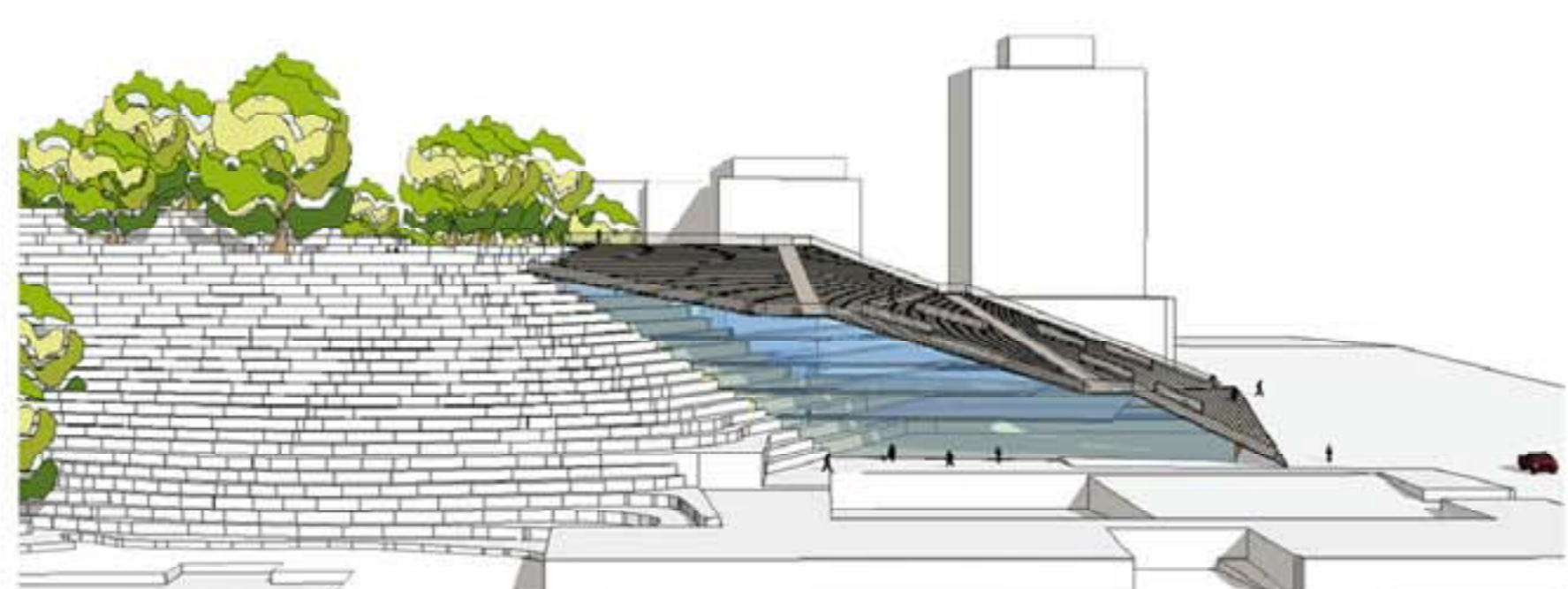
FLOORS (open spaces) 1:500



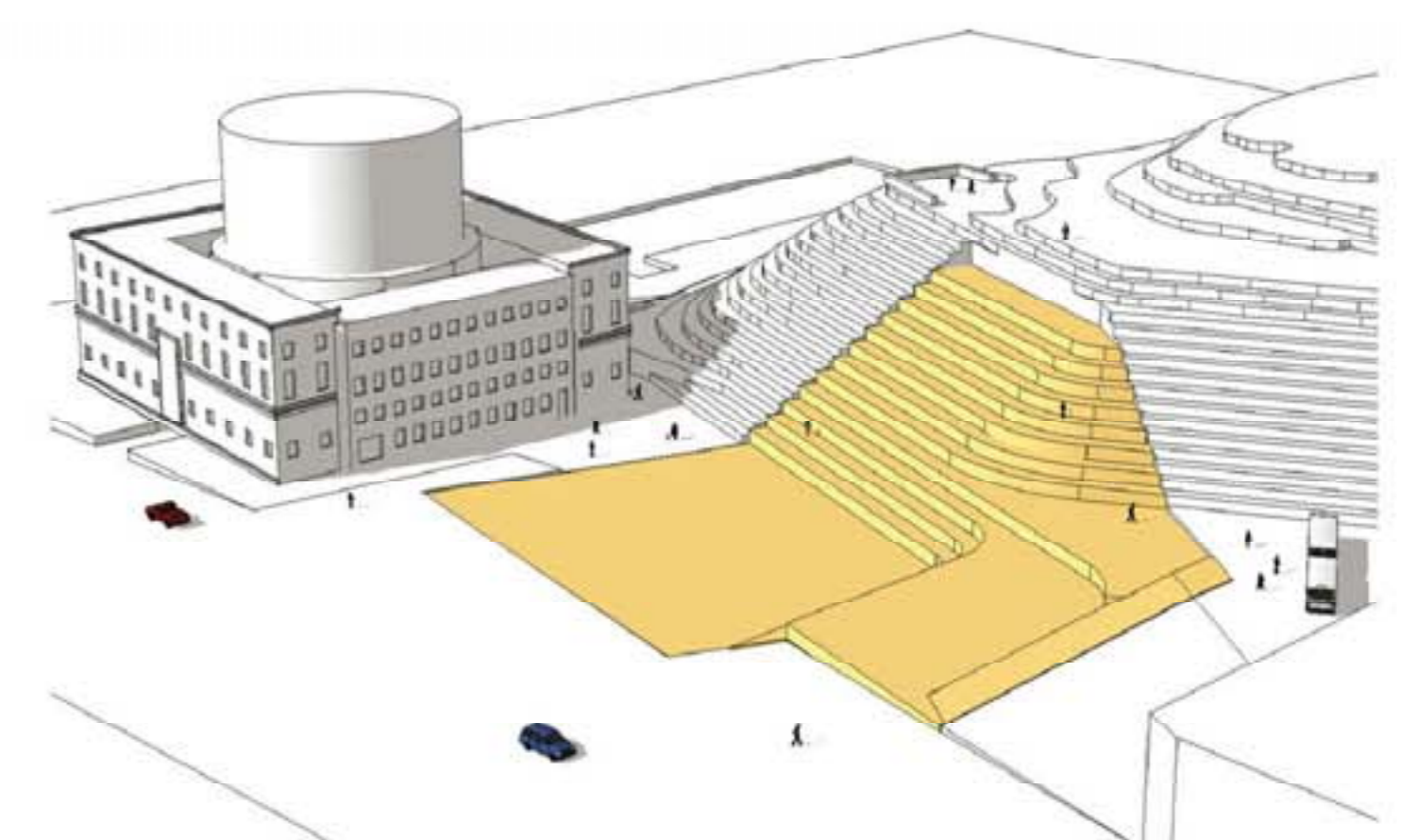
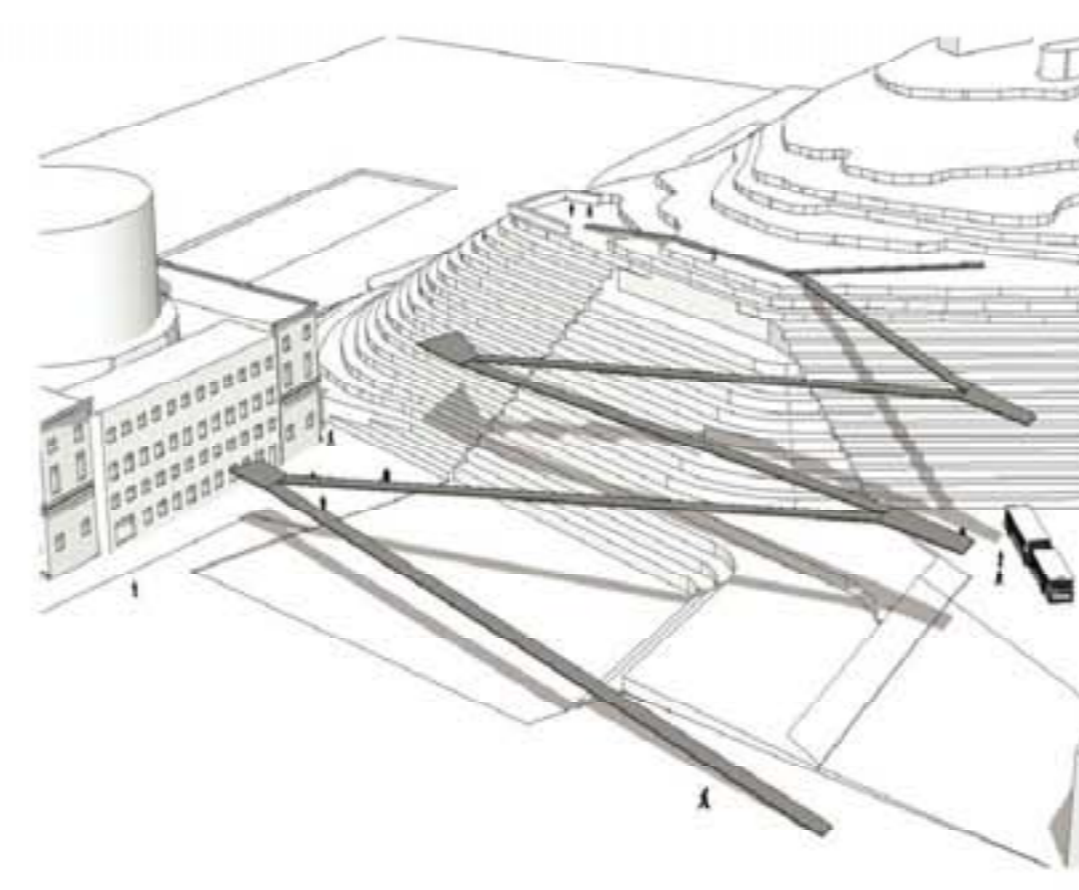
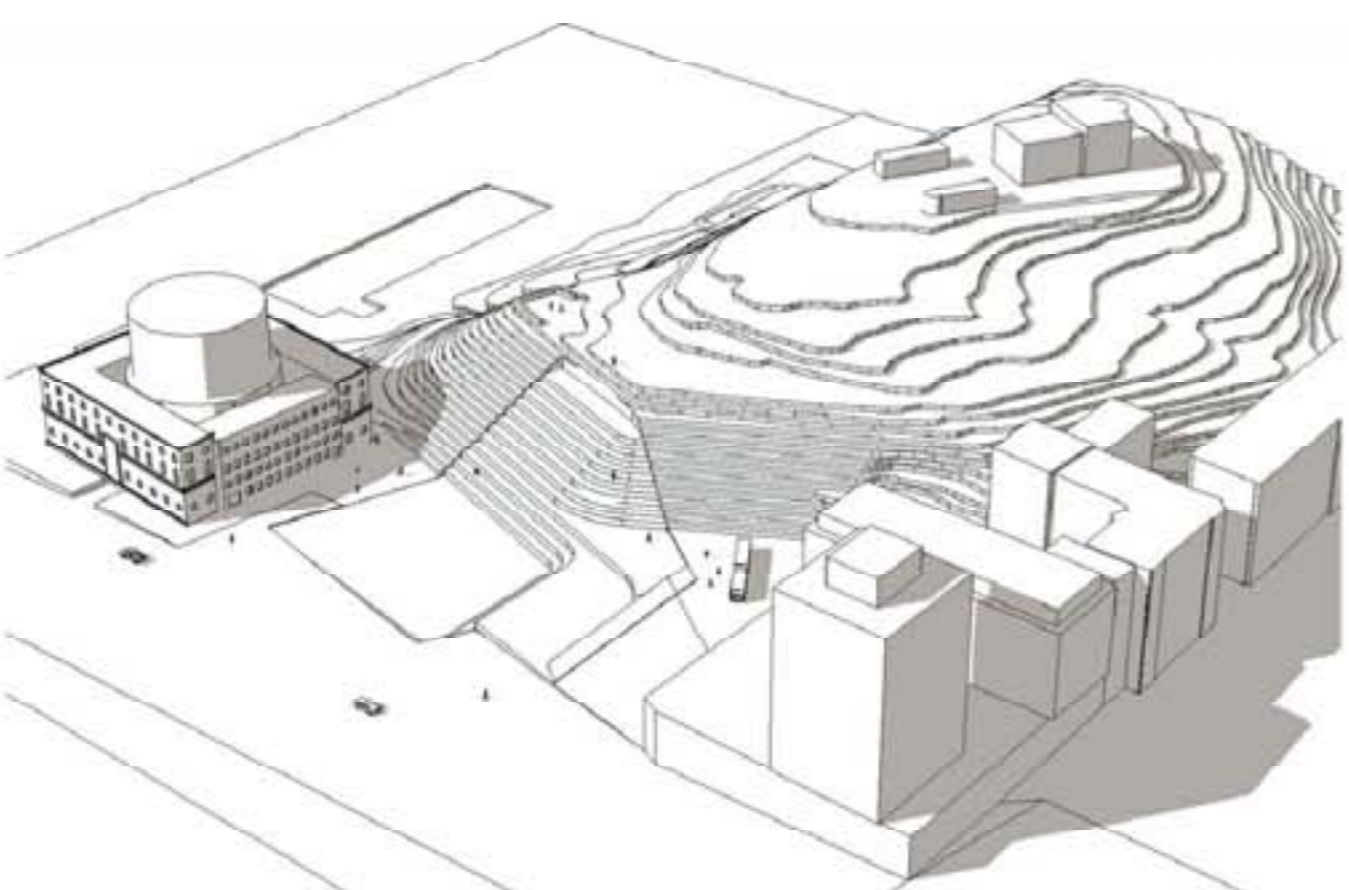
Elevation from Sveavägen



ROOF (stairs) 1:500



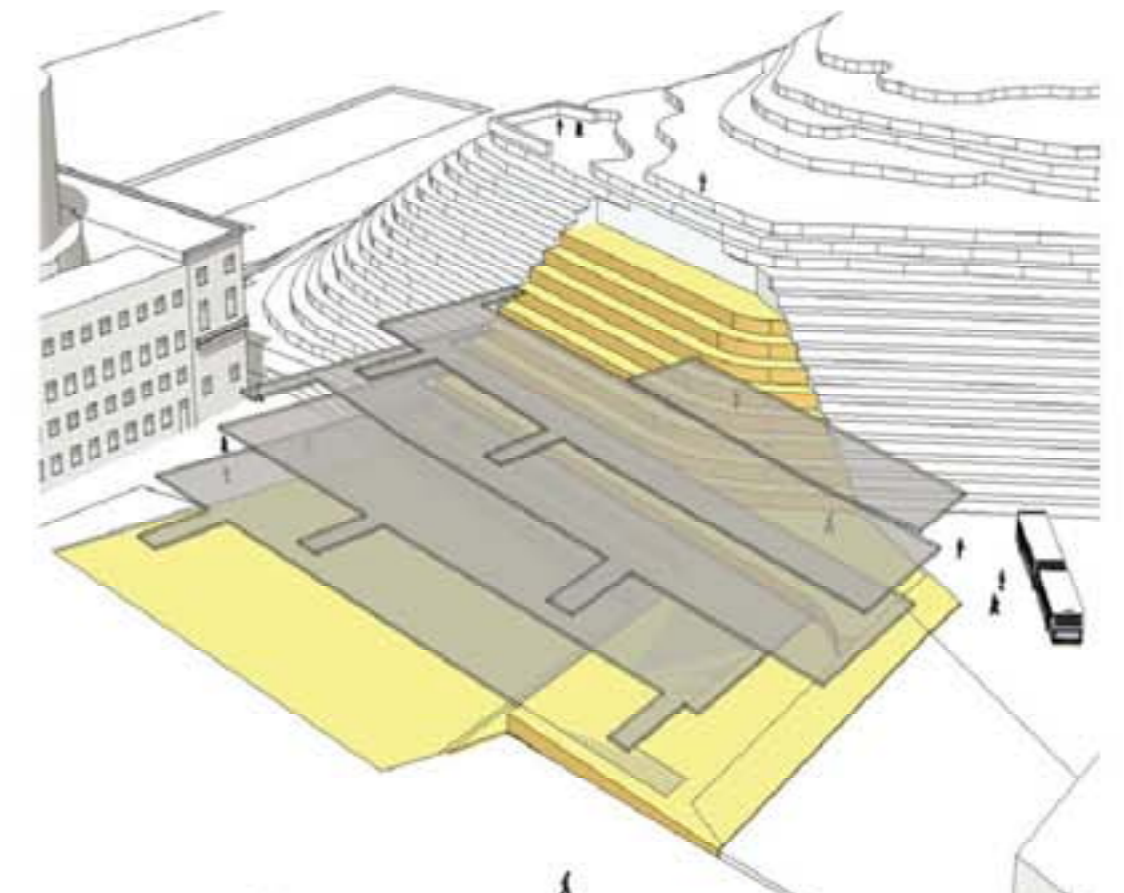
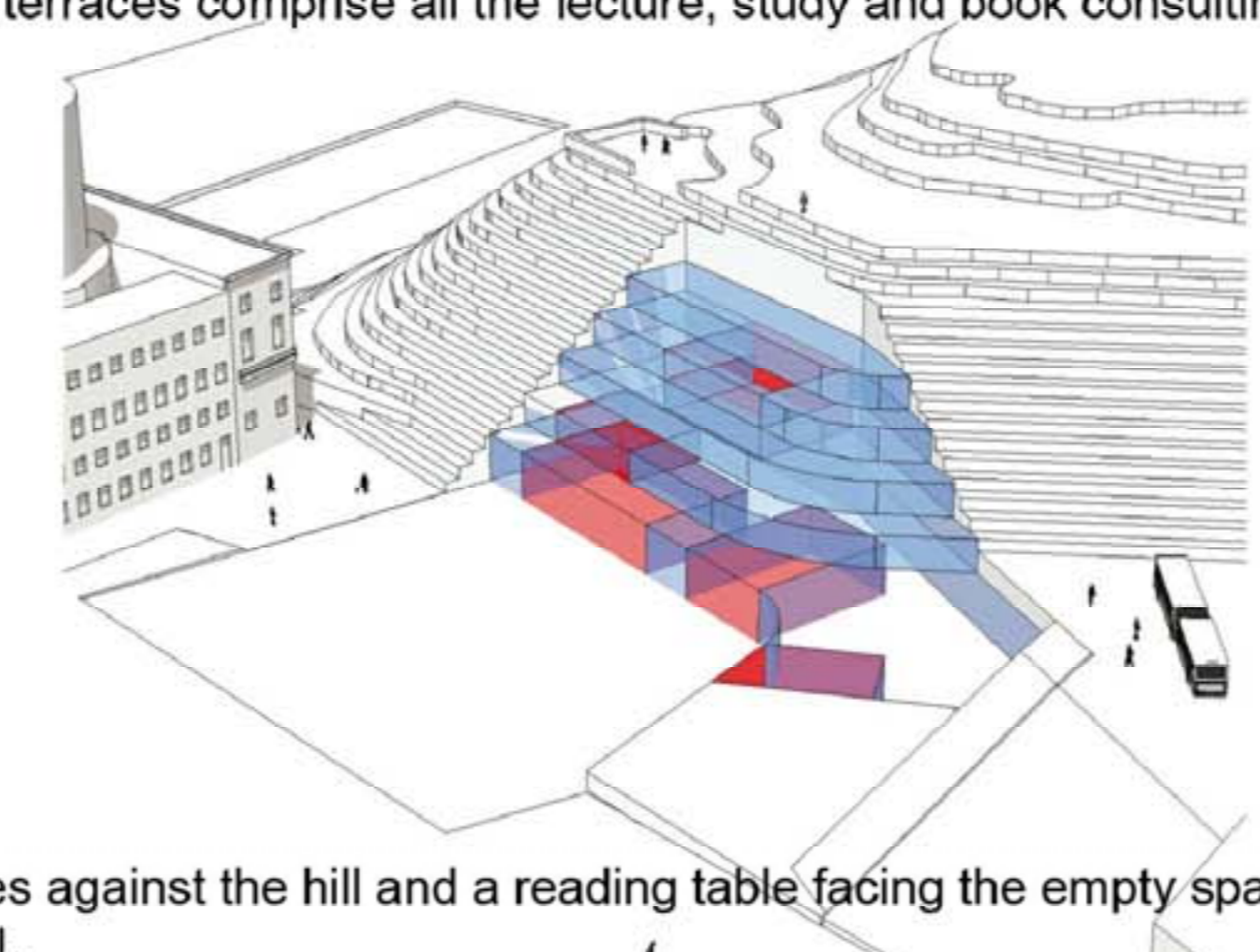
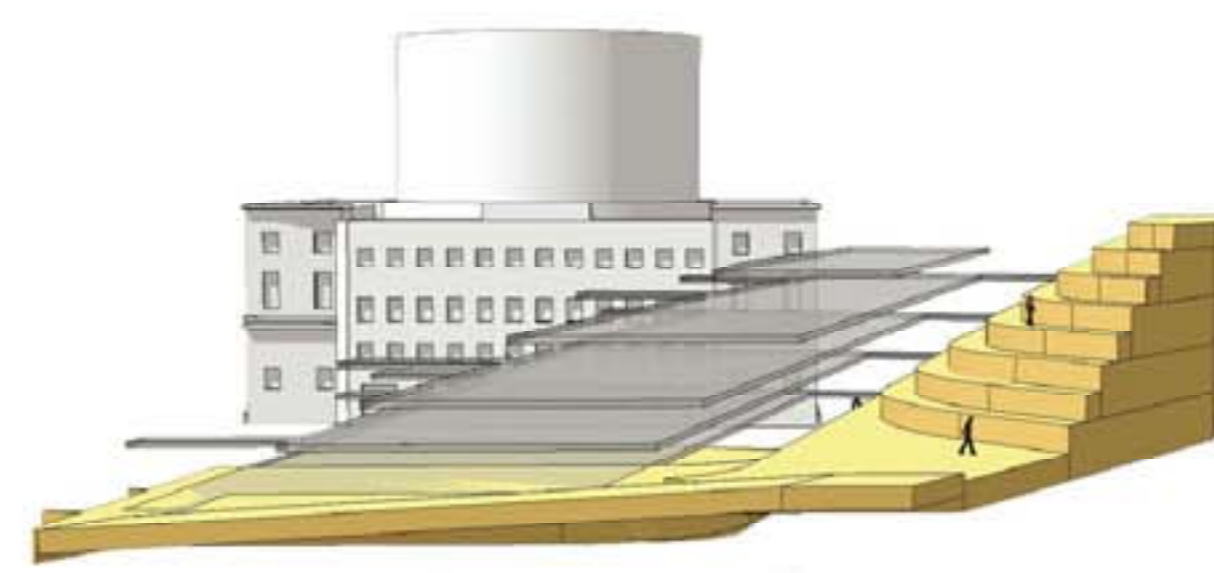
Elevation from Sveavägen (main library hidden) 1:500



The intervention zone, already occupied by 3 the annexes, must be able to provide more than 15000m<sup>2</sup> for future needs. Since a volume enhancement in this area is inevitable, our major concern is to avoid the proliferation of different architectural terms and volumes. In the same way, we don't think building a huge volume putting the Asplund's building in the shade would be appropriate. Finally, it seems essential to bring together the hill in this area, the whole site and its surroundings, and to make it easy to reach. Instead of adding a new building to the existing site, our project aim at simplifying the whole into 2 essential components:

- The hill, as a unifying, structuring element.
- Asplund's central building, as the symbol and landmark of the library.

The project takes place in the existing relief wich is reorganised into terraces (rice fields for culture). The lower levels are on the same level as the Asplund's building and Gyldengatan, without reaching the upper level of the subway. The terraces comprise all the lecture, study and book consulting areas.



In a section view, each terrace is made of a set of shelves against the hill and a reading table facing the empty space, allowing the reader to consult the books immediately. The top of the shelves becomes the reading table of the upper level.

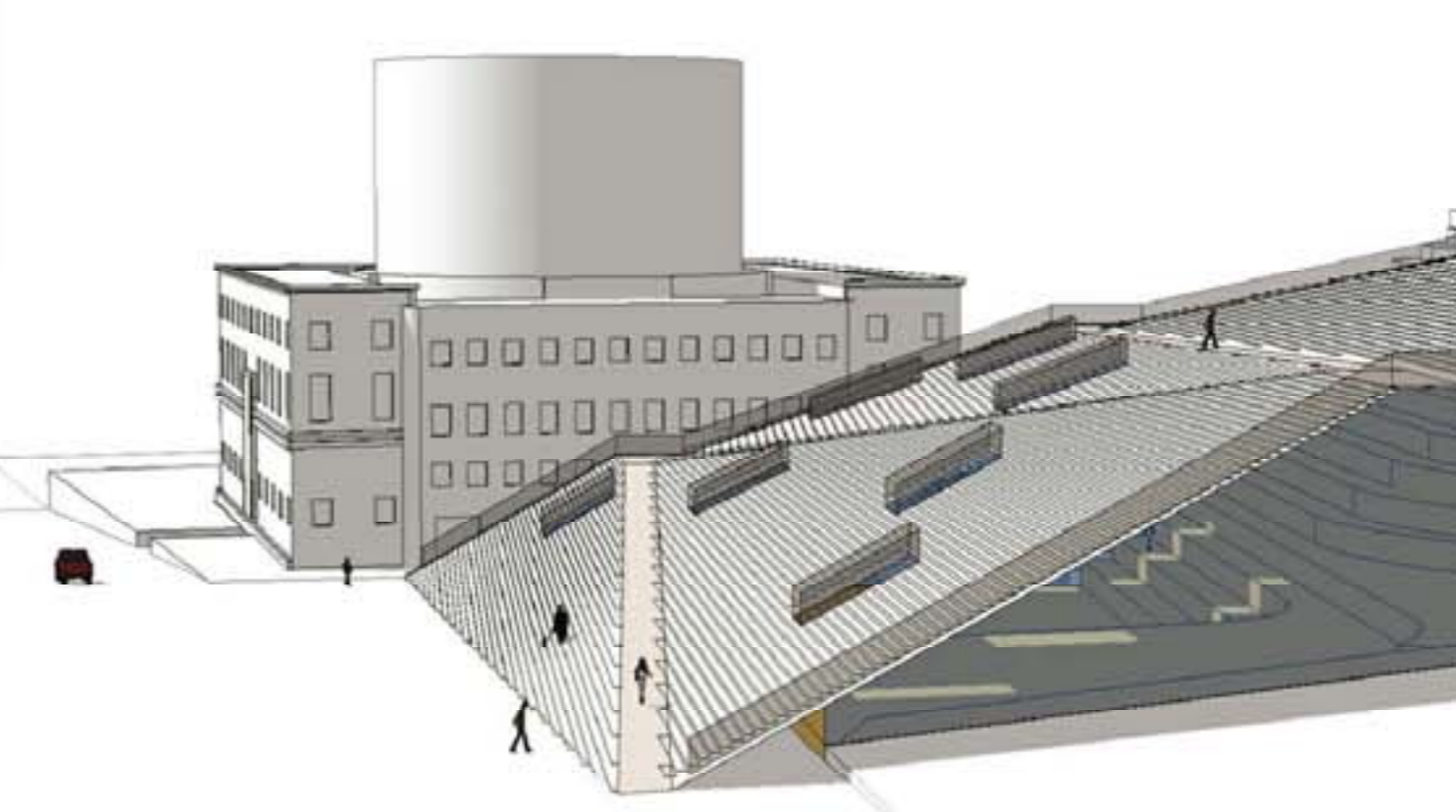
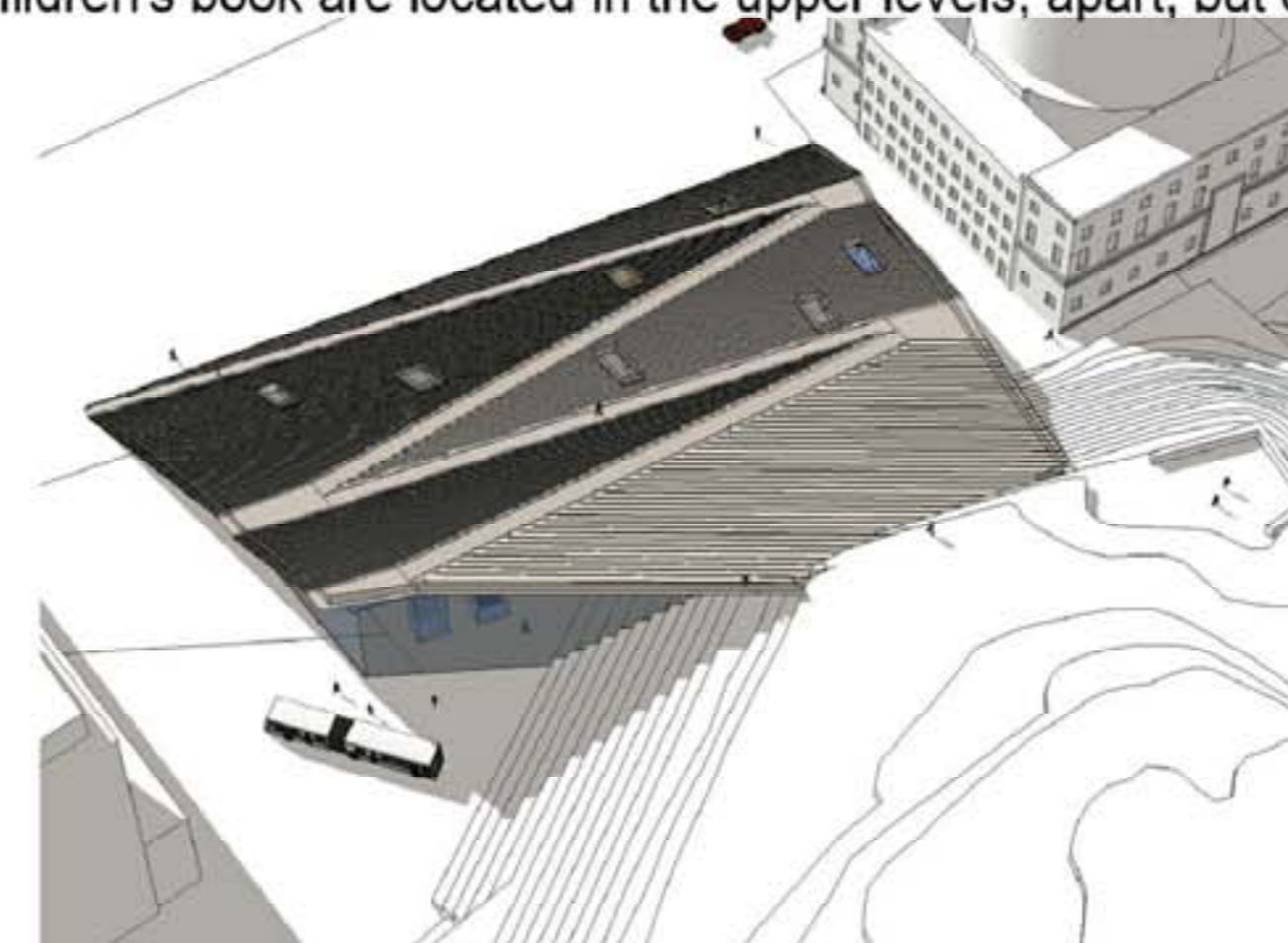
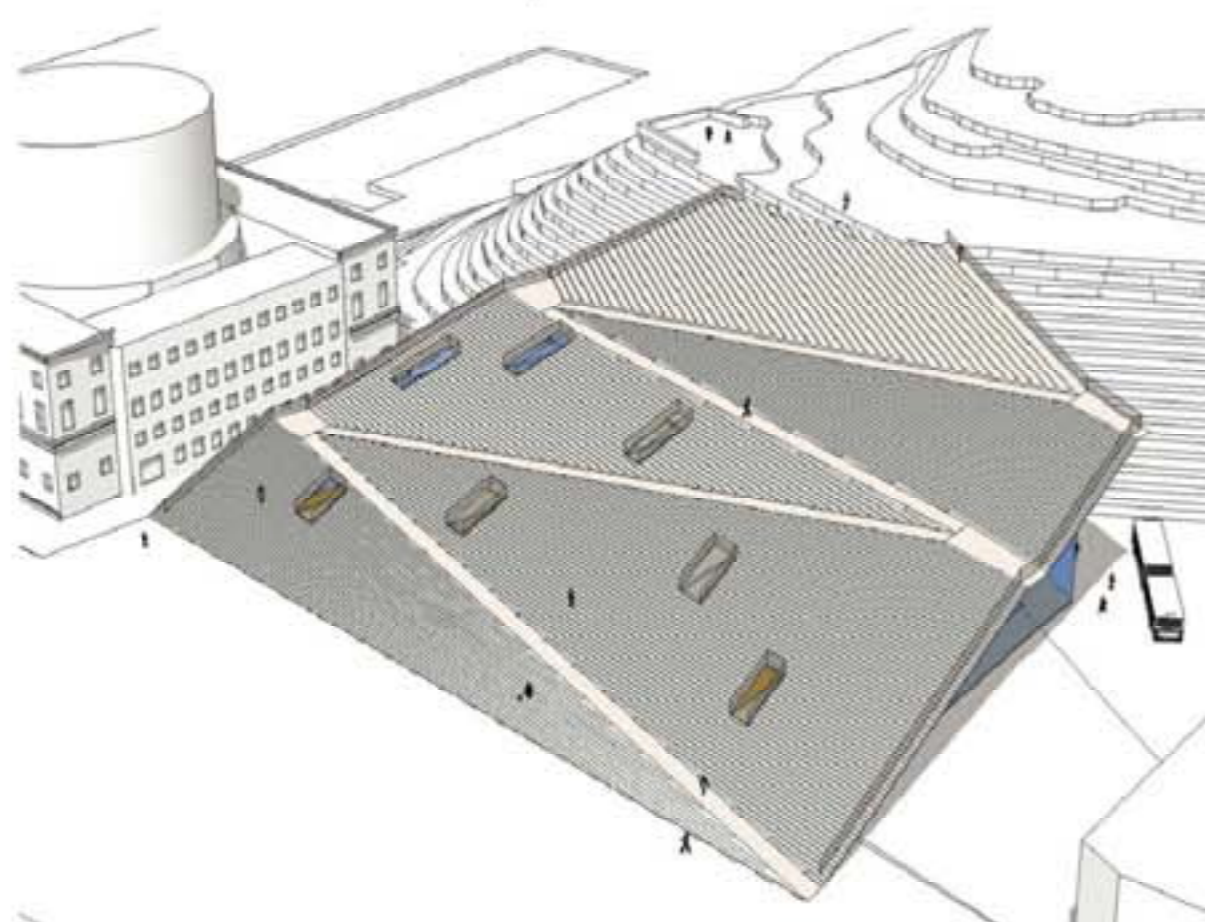
The storing zones, the closed depository and the sorting machine are all located under the hill, as well as the service zone not requiring natural lighting. This area also offers room for auditoriums that require isolation and/or occultation. (e.g. cinema, music, video,...)

Facing the hill, 6 open plan levels (including the lower level) accomodate the remaining functions of the library.

Above the terraces, the stepped configuration allows the creation of open auditoriums.

The organisation of the open plan levels is free and can easily be modified. These can be assigned to a wide variety of purposes. The open plan levels can be partitioned or remain open, and accomodates all kinds of furniture, in order to fulfil multiple needs, such as videos, CDs, DVDs, periodicals, and even class rooms, studios,...

The administration department and the Swedish Institute of Children's book are located in the upper levels, apart, but open on the other areas.

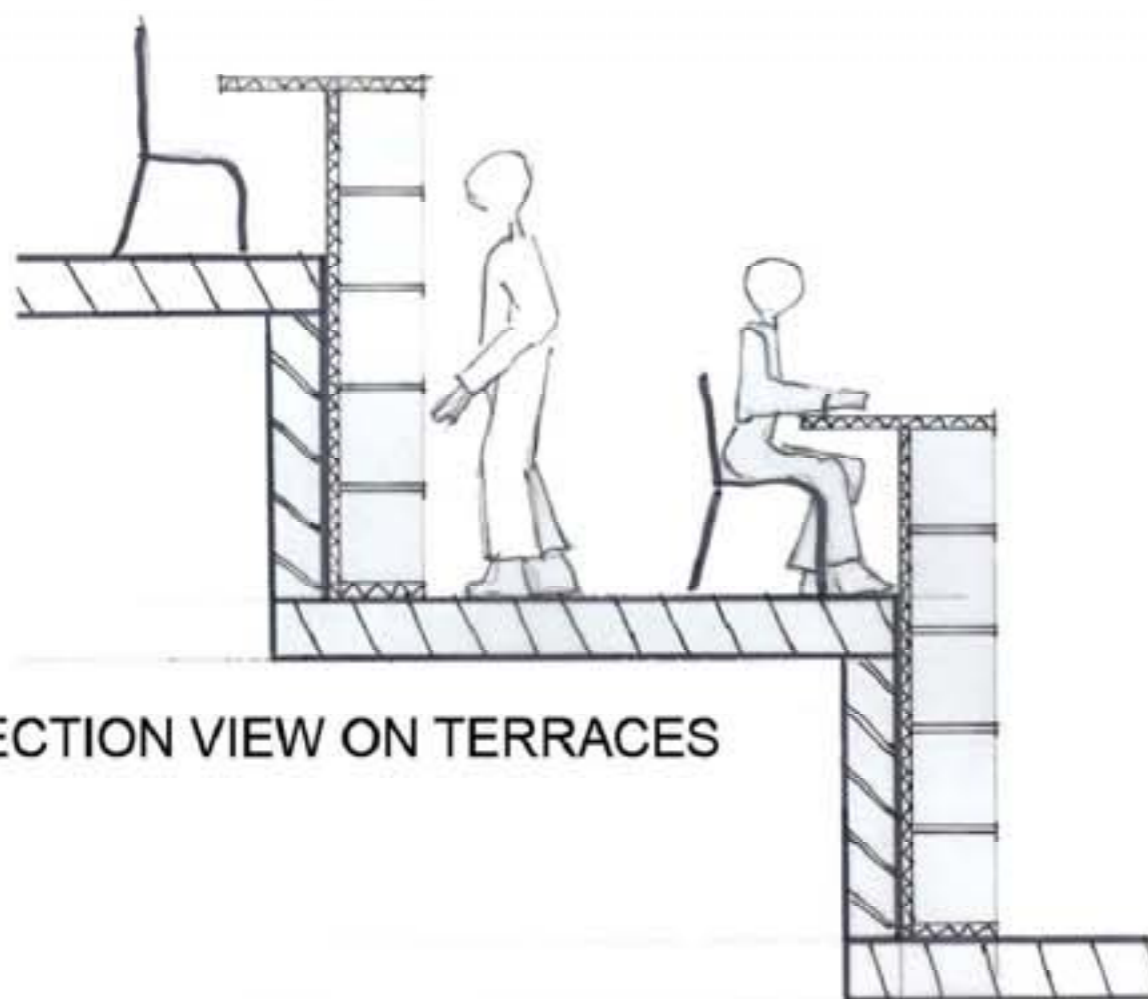


An accessible roof heads the entire structure. This roof has teh shape of a huge stairs, linking Odengatan and the top of the hill, and also providing an acces for the disabled persons. In this way, the hill stretches to the street, and the Asplund's building gets a prominent position.

Direct access to the different levels break through the oblique façade giving more access ways to the library as well from the street as from the top of the hill. With his own way in, the restaurant will be located in the vicinity of one of these access ways. The same scheme will applied to the Swedish Institute of Children's book.

The outer access ways, the open plan levels and one each two terraces share the same level and are connected by footbridges in order to allow an easy traffic of the media from the loan centres to their storing areas.

The main entrance is located in Gyldengatan. Lifts are provided in the hallway, right after the entrance. In this area will also be held the trademan's entrance, in the vicinity of the access way to the garage. From there, stocks and sorting machine are directly accessible as well as the service lifts.



SECTION VIEW ON TERRACES

