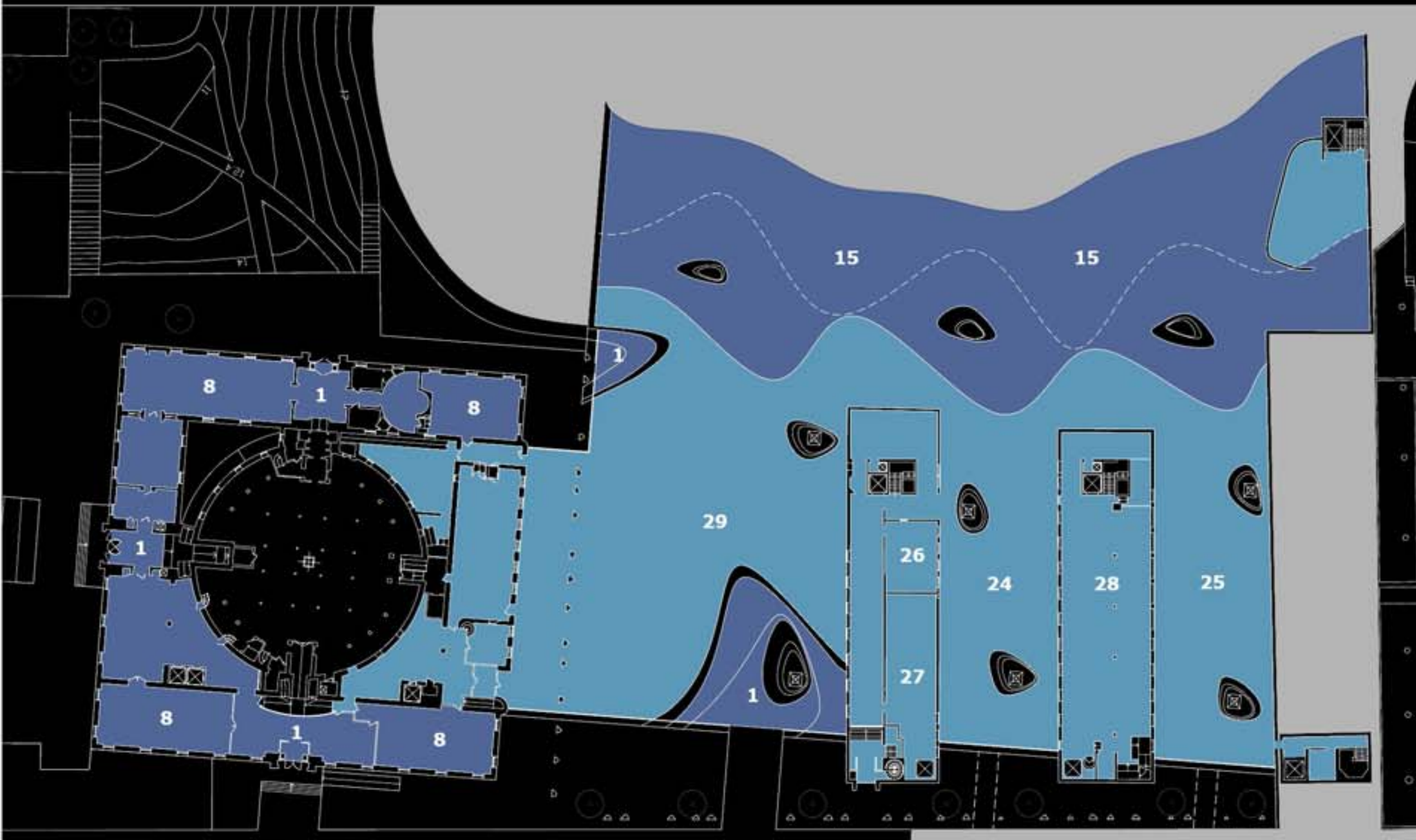
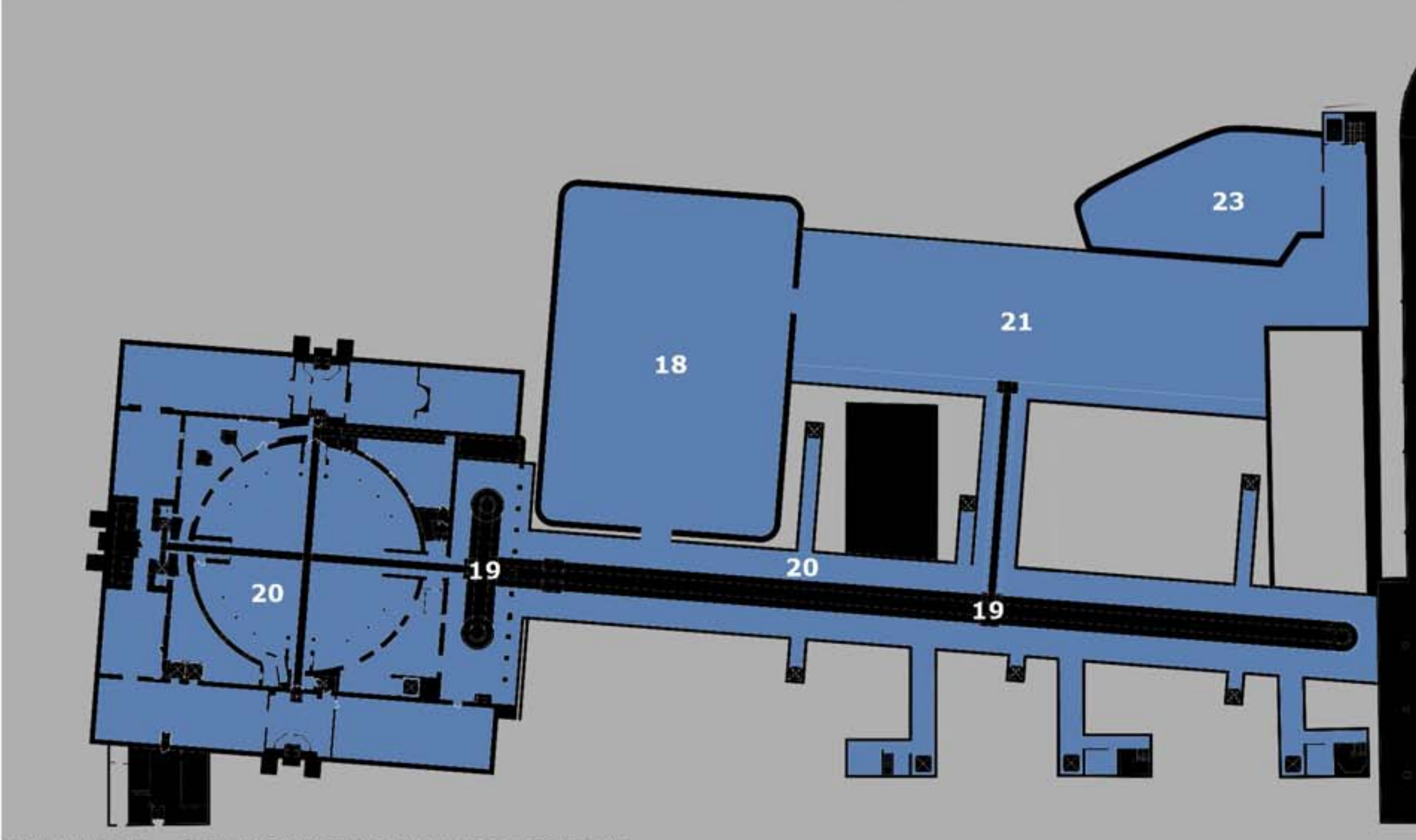


PLAN LEVEL 0 PUBLIC LANDSCAPE



PLAN LEVEL -1 ADMINISTRATION AND STAFF



PLAN LEVEL -2 DEPOSITORY MEDIA MANAGEMENT



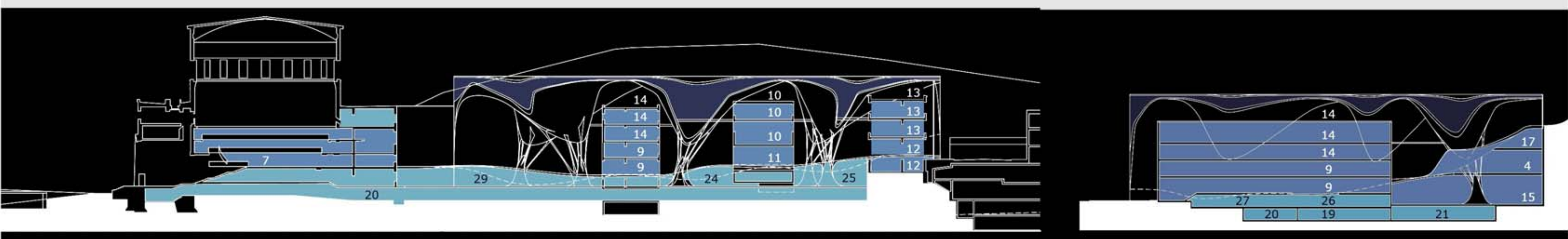
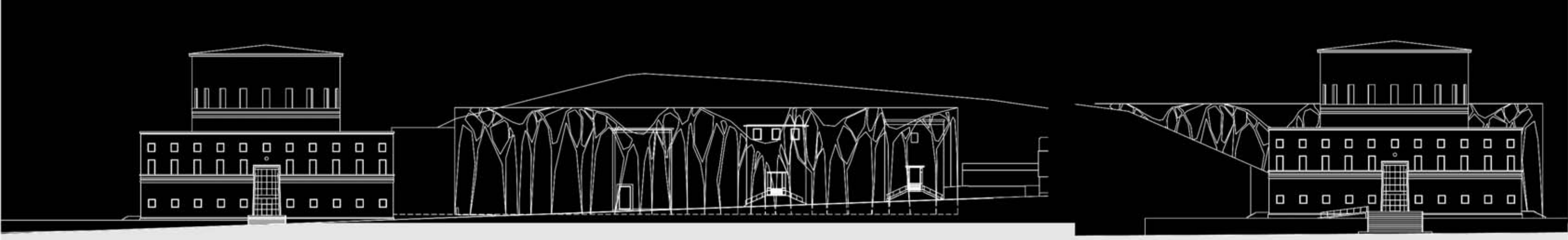
THE SKY AND THE LANDSCAPE PARALLEL UNIVERSES OF THE STOCKHOLM CITY LIBRARY

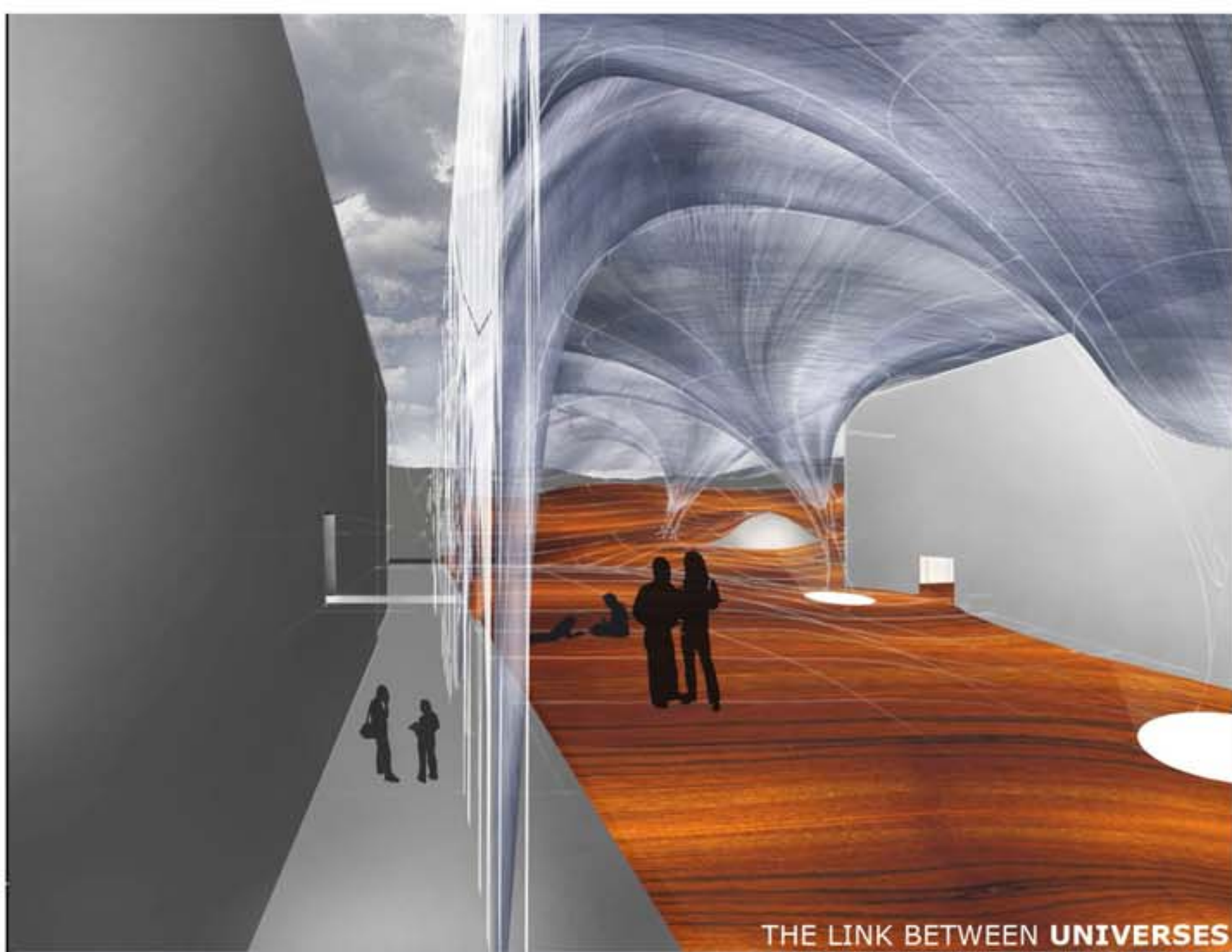
Gunnar Asplund's Library represents the wholeness of the world, in which the cube is the Earth, and the cylinder is the Sky. Asplund's own understanding of architecture in general was one dominated by landscape and sky, as the two physical realms that define man's spatial experience. The Stockholm City Library offers the image of completeness, a perfect Universe.

Given these conditions, the extension of the Library was conceived as a parallel universe, where the landscape and the sky re-occur, this time not in an abstract manner, but in a literal one. On the one hand, the existing landscape of the Observatoriekullen rolls down towards Odengatan, becoming the main floor of the library. The landscape constitutes the main room of the library, a democratic space envisioned to function 24/7, without interfering with the controlled accesses into subject areas, which are hosted in Asplund's Library and the Annexes.

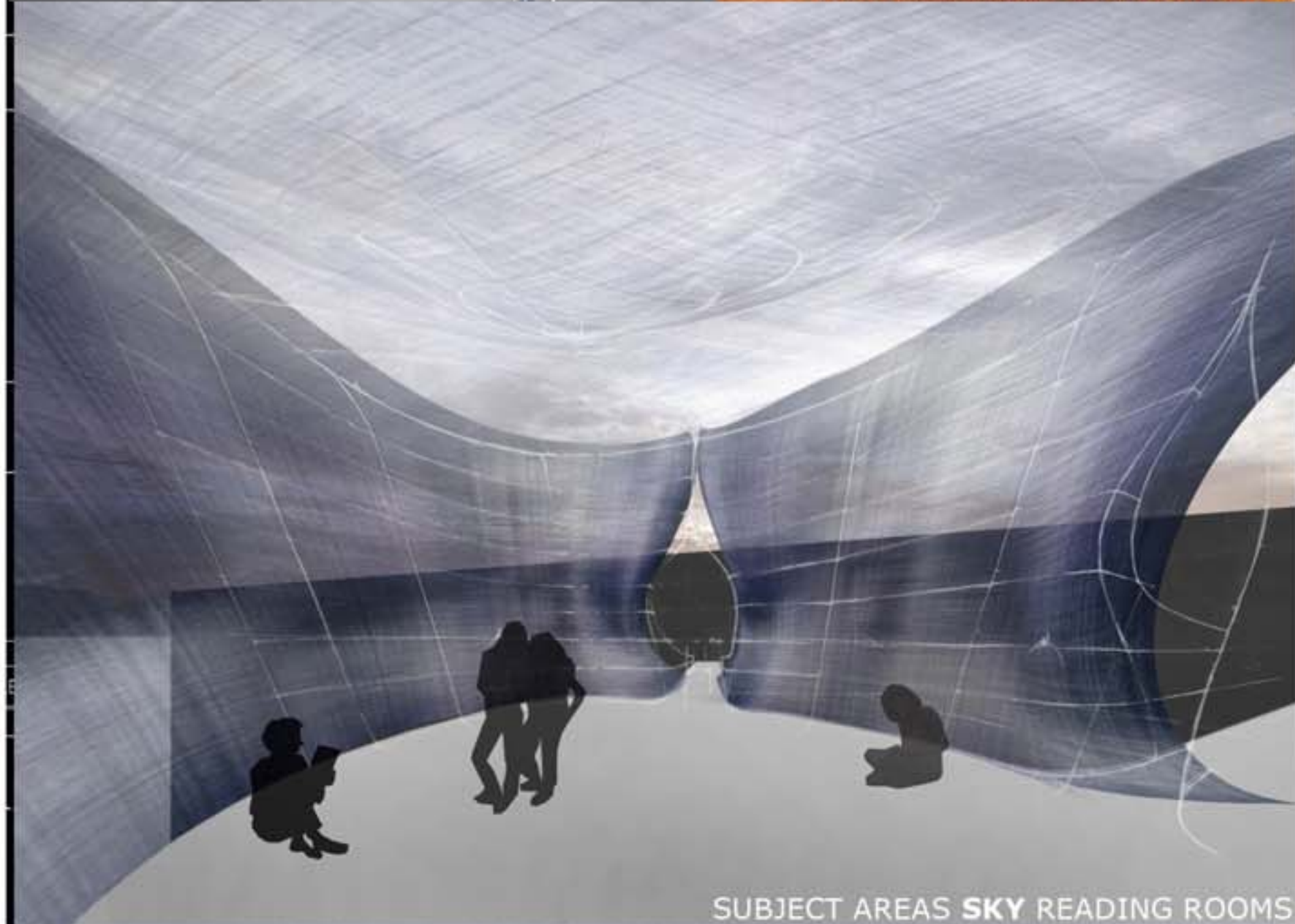
On the other hand, a large canopy risen from underneath the scape covers the site, creating a vast atrium over the entire library. Additionally, the skyscape funnels down to create a series of reading rooms that are used by subject areas. This canopy is sharply trimmed on the perimeter, in order to mediate the relationship with the street and Asplund's Library. The entire administration is placed on one level, having the landscape as a roof, while media management takes place a level below.

Although the addition unfolds in completely new dimensions, the new design keeps almost intact the character of Asplund's initial plan for the area. In a sense, the new library forms the landscape Universe.

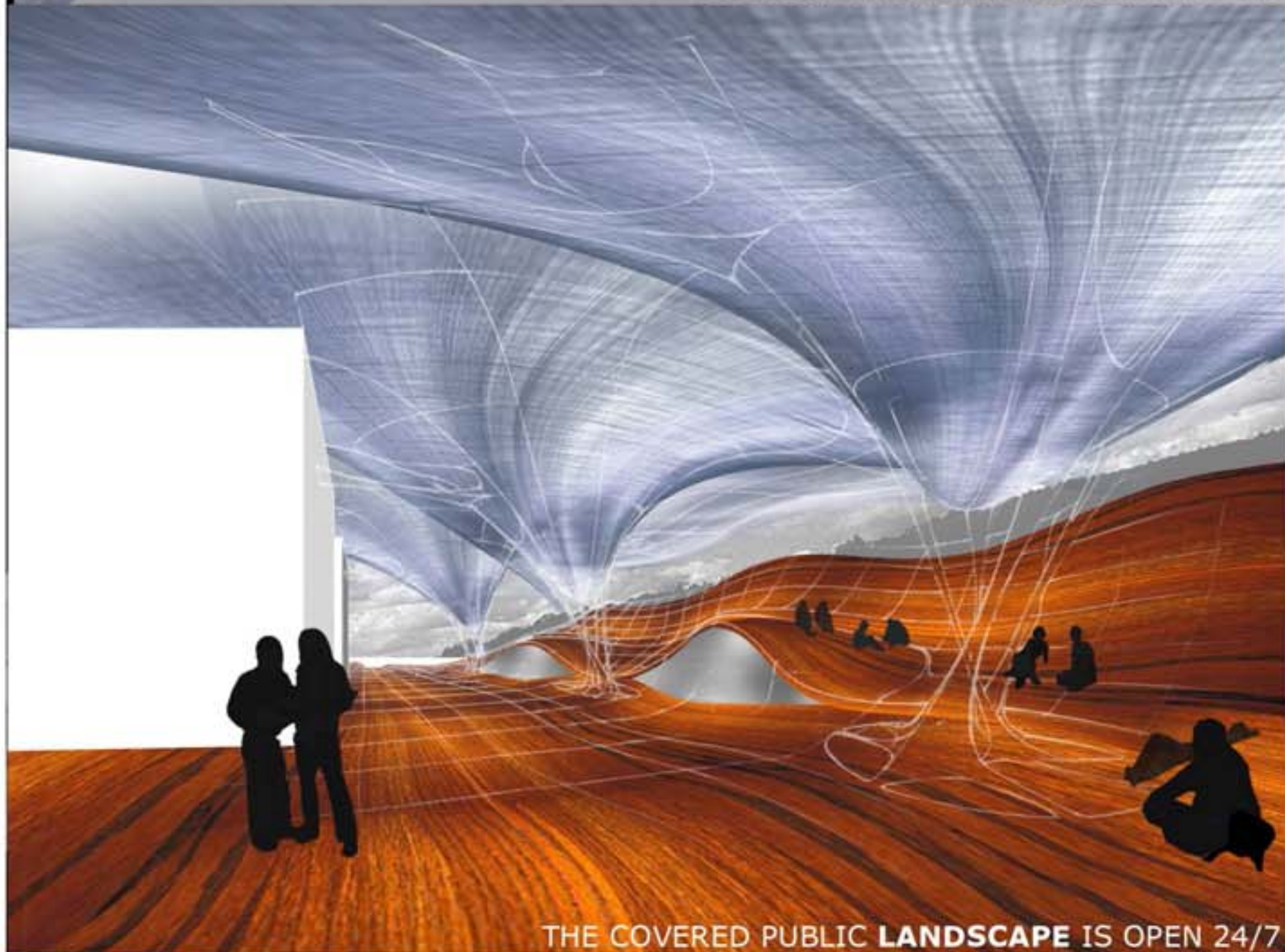




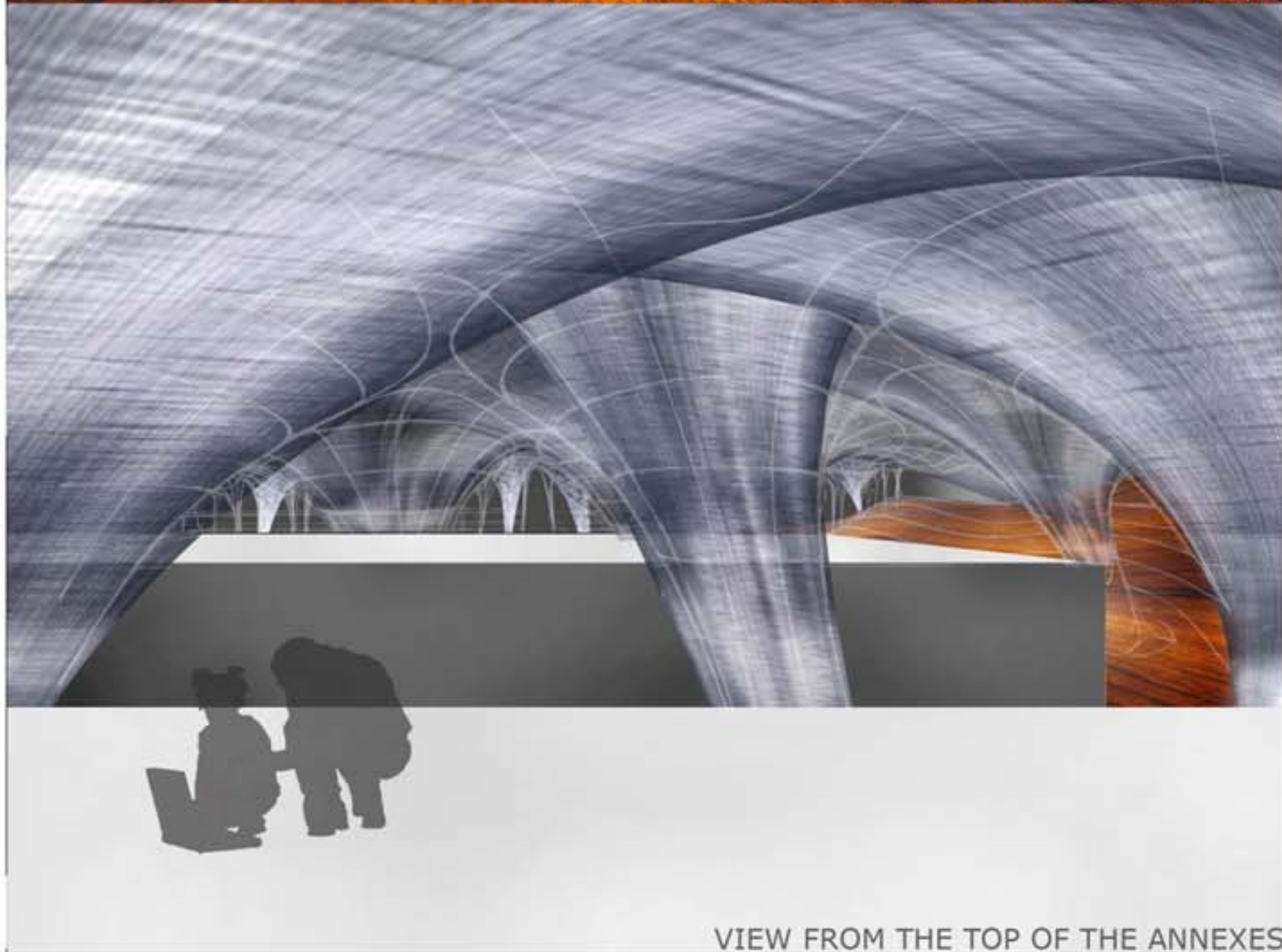
THE LINK BETWEEN UNIVERSES



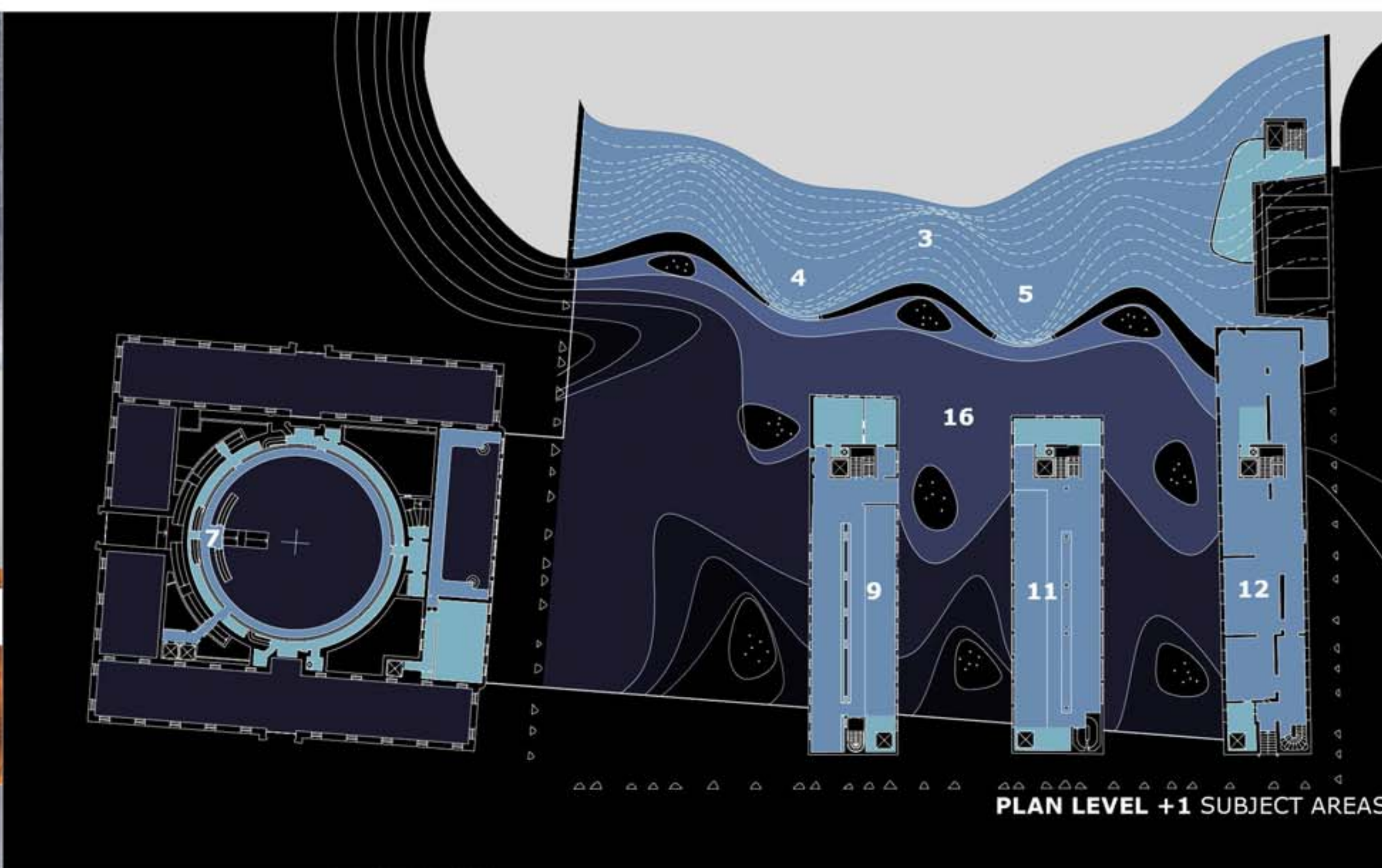
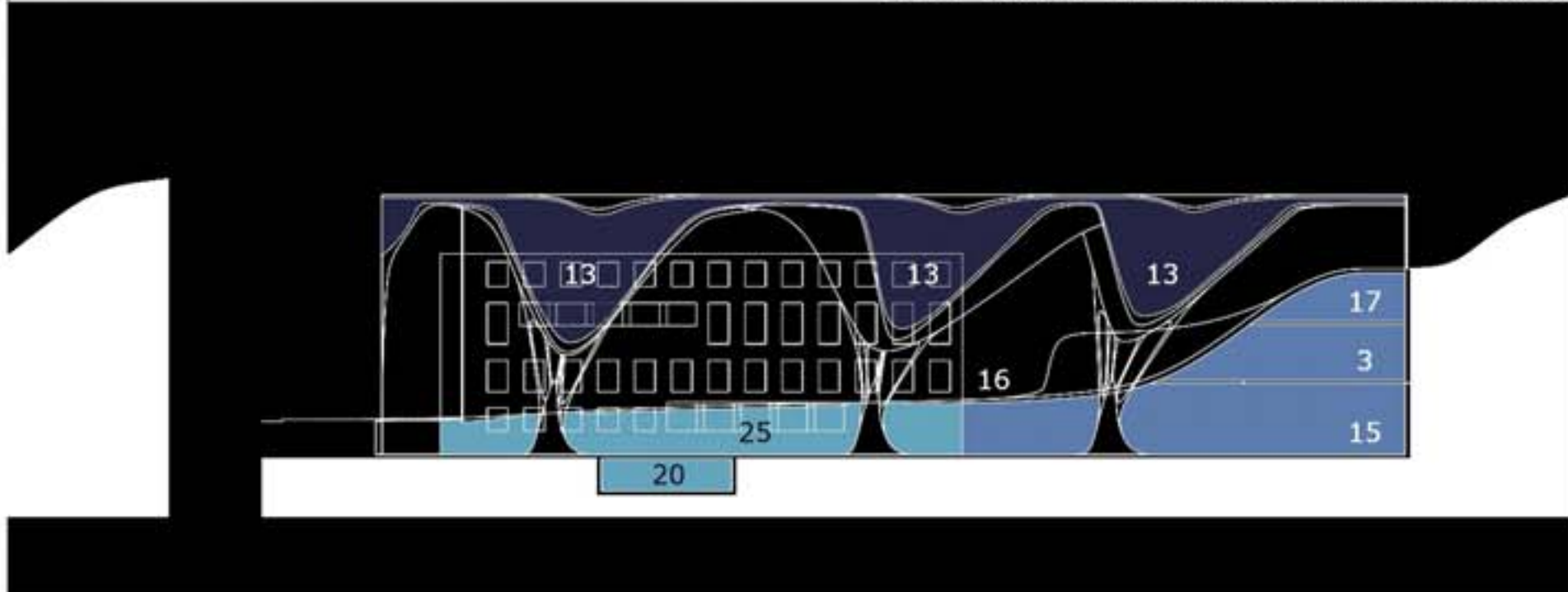
SUBJECT AREAS SKY READING ROOMS



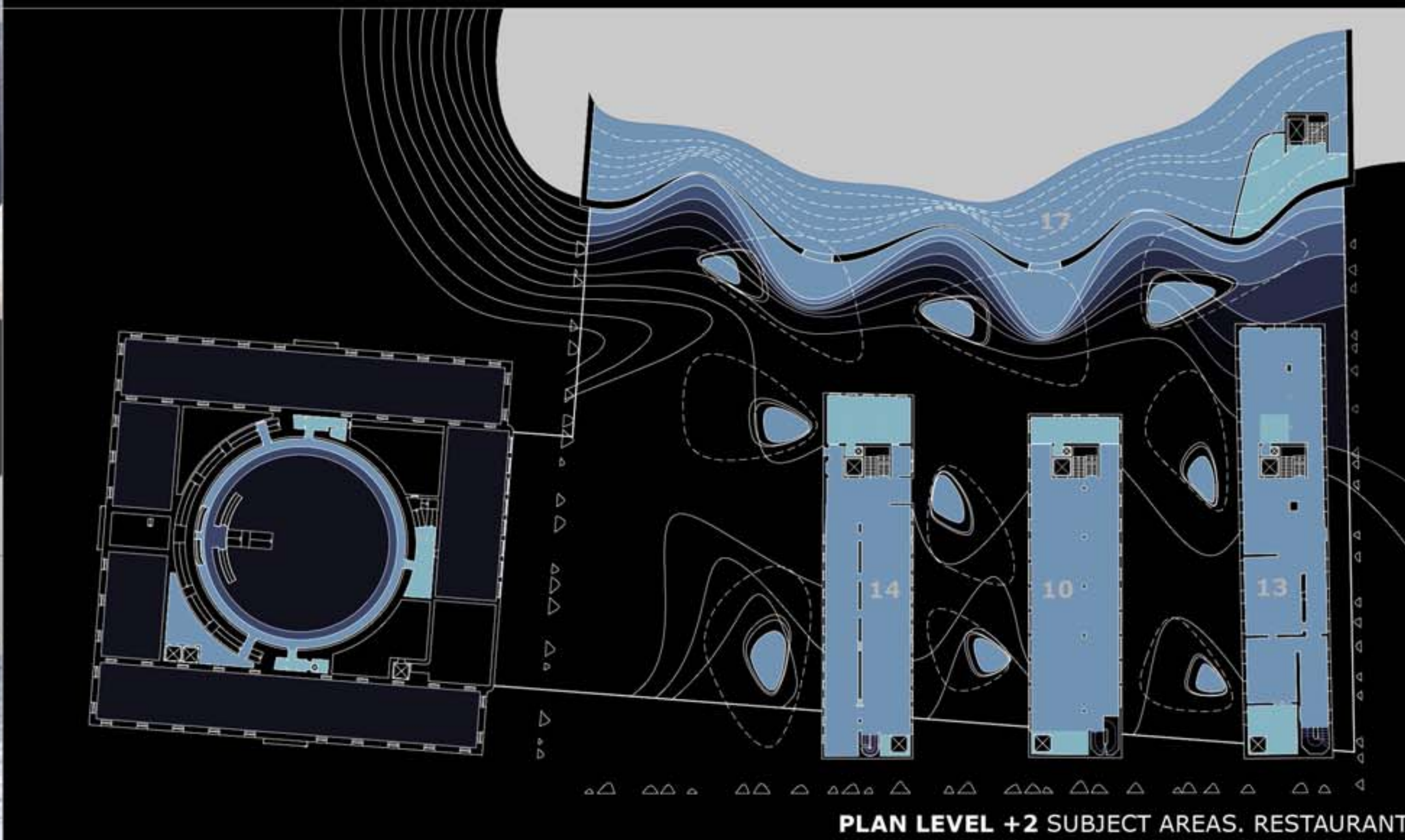
THE COVERED PUBLIC LANDSCAPE IS OPEN 24/7



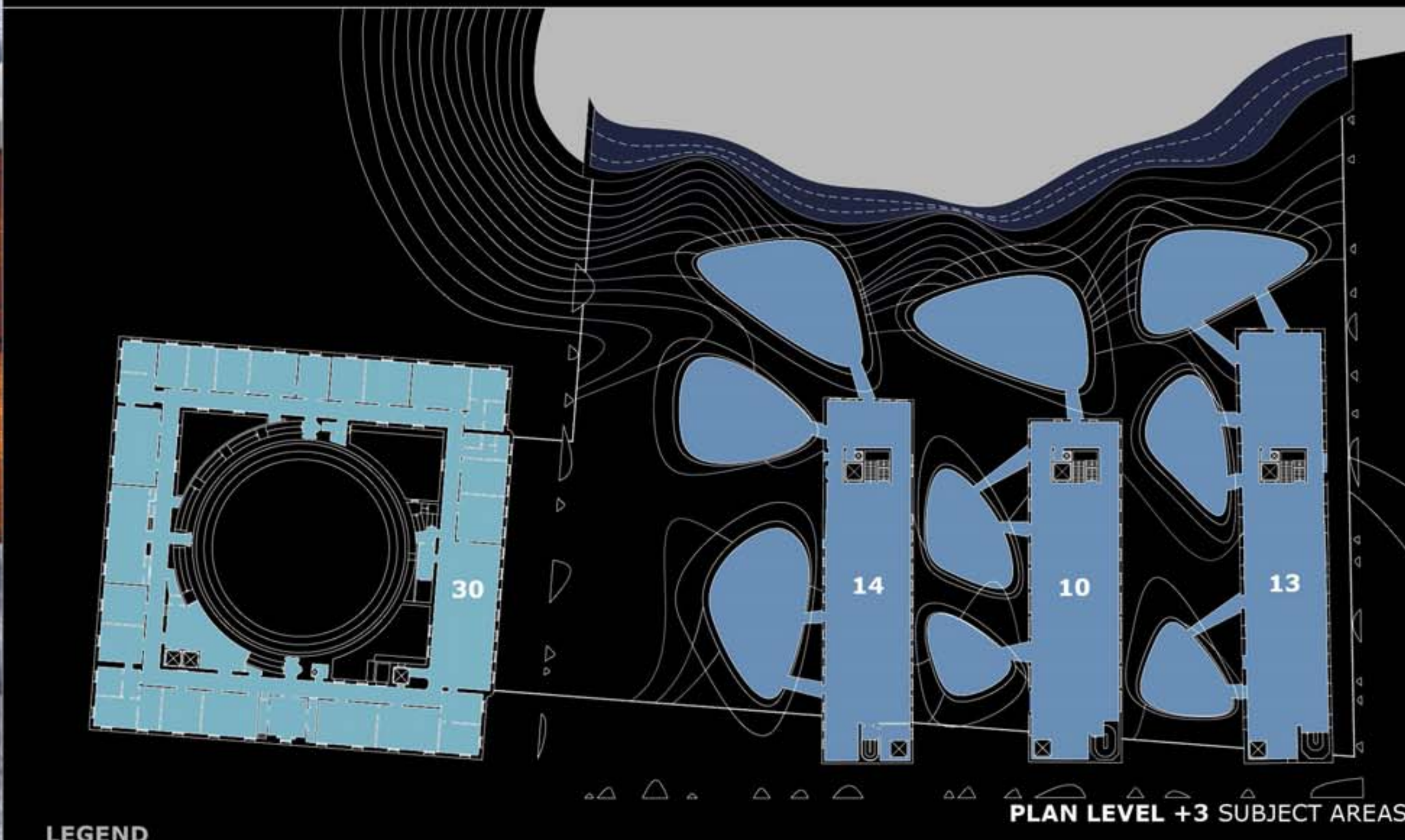
VIEW FROM THE TOP OF THE ANNEXES



PLAN LEVEL +1 SUBJECT AREAS



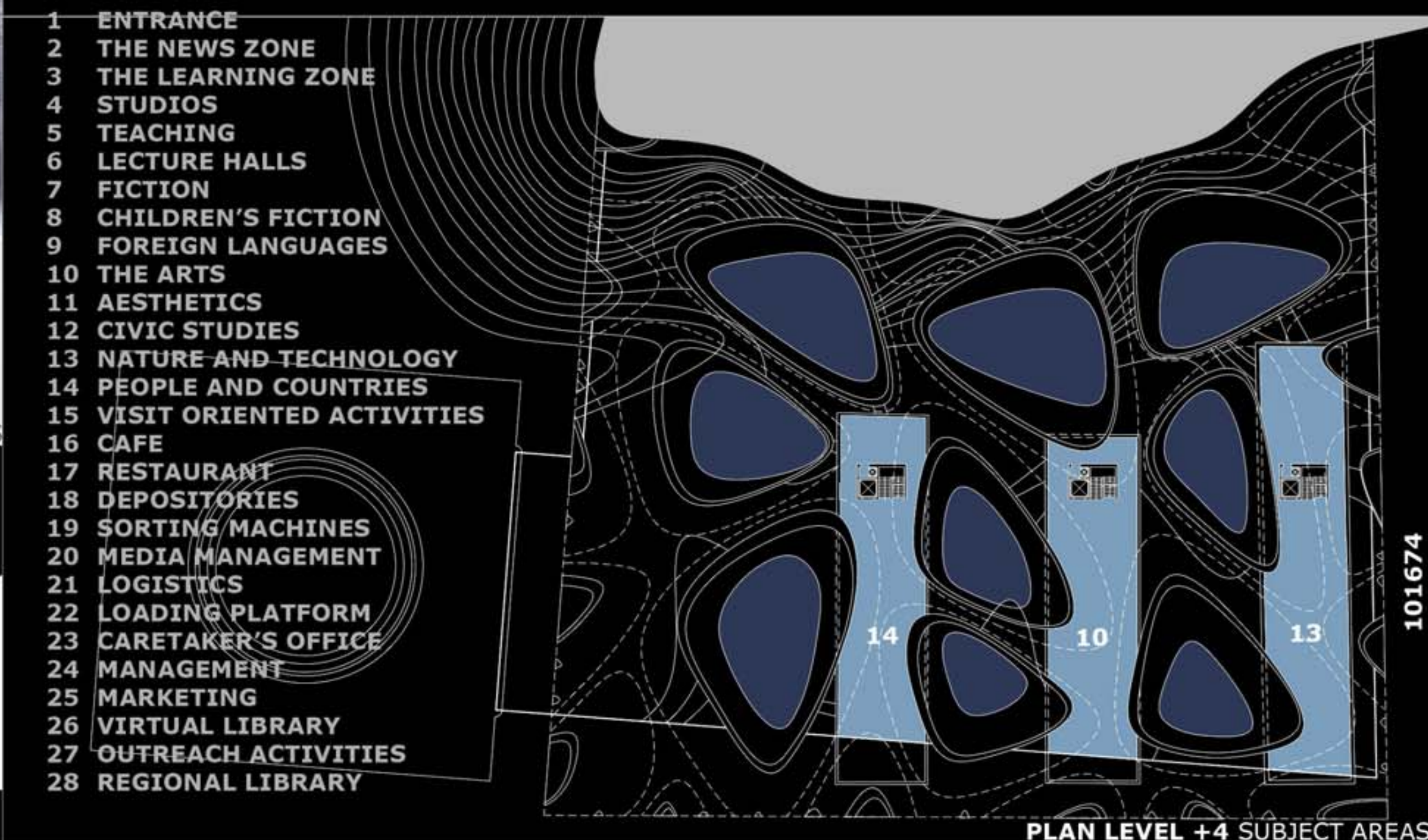
PLAN LEVEL +2 SUBJECT AREAS. RESTAURANT



PLAN LEVEL +3 SUBJECT AREAS

LEGEND

- 1 ENTRANCE
- 2 THE NEWS ZONE
- 3 THE LEARNING ZONE
- 4 STUDIOS
- 5 TEACHING
- 6 LECTURE HALLS
- 7 FICTION
- 8 CHILDREN'S FICTION
- 9 FOREIGN LANGUAGES
- 10 THE ARTS
- 11 AESTHETICS
- 12 CIVIC STUDIES
- 13 NATURE AND TECHNOLOGY
- 14 PEOPLE AND COUNTRIES
- 15 VISIT ORIENTED ACTIVITIES
- 16 CAFE
- 17 RESTAURANT
- 18 DEPOSITORIES
- 19 SORTING MACHINES
- 20 MEDIA MANAGEMENT
- 21 LOGISTICS
- 22 LOADING PLATFORM
- 23 CARETAKER'S OFFICE
- 24 MANAGEMENT
- 25 MARKETING
- 26 VIRTUAL LIBRARY
- 27 OUTREACH ACTIVITIES
- 28 REGIONAL LIBRARY



PLAN LEVEL +4 SUBJECT AREAS