

/Asplund

Architectural Competition

The Stockholm City Library

The new building never insists on the existence.

Many inside event blends with city landscape reflected in a facade of big glass.

It is a design to let an event such as a library make ends meet as a city landscape.

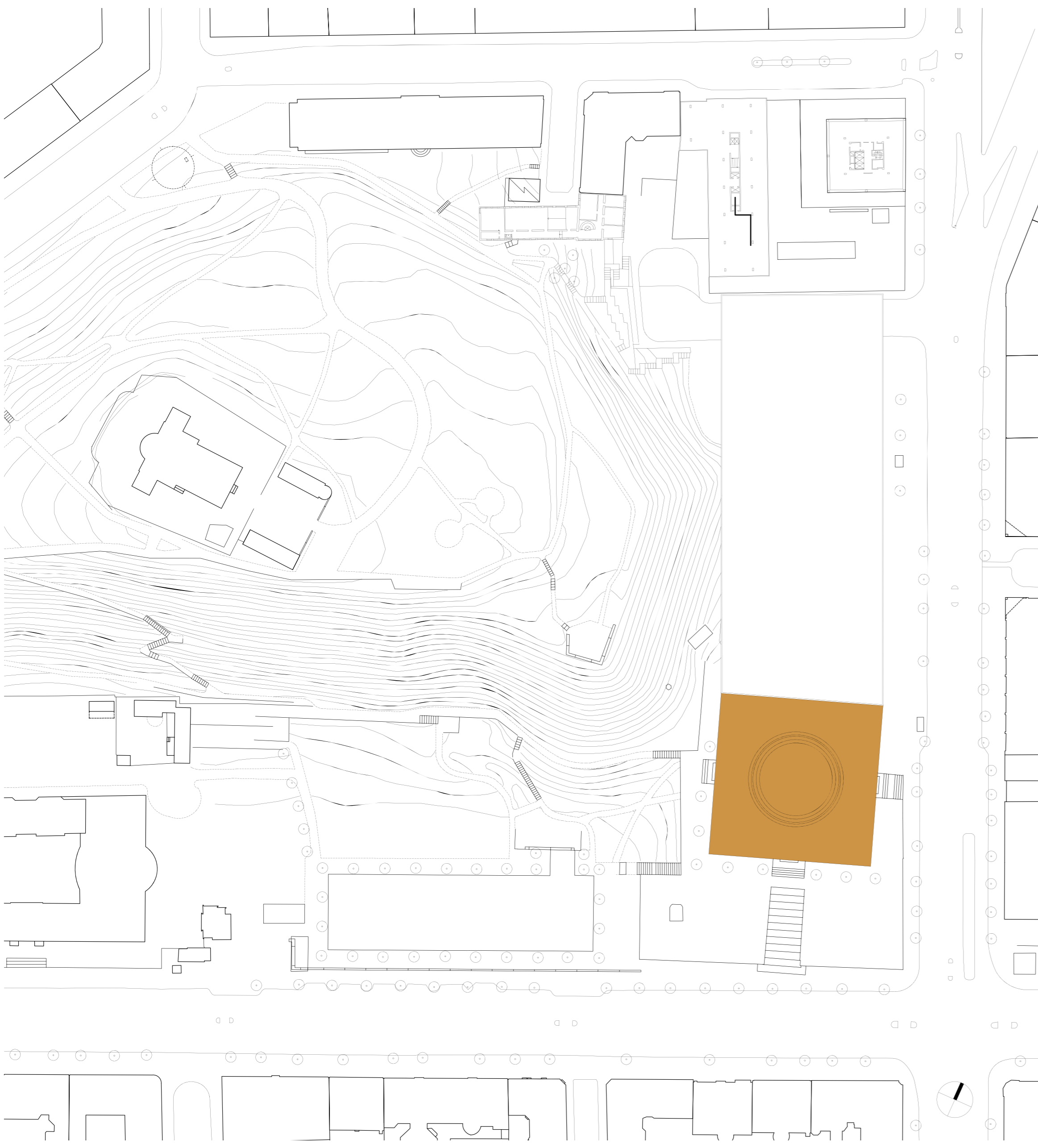
The void that is a trace of three annexes connects a beautiful green slope and town of a background and records new life on a plan of Asplund.

In the inside of glass side, various letter information is expressed in a section of a floor slab and sending the latest information to the outside.

Inside space of extremely simple space constitution is always the factory which can cope with a future event flexibly by changing.



Outlook on bird photo(File 7-a)



Site plan 1/1000



The model photo 1



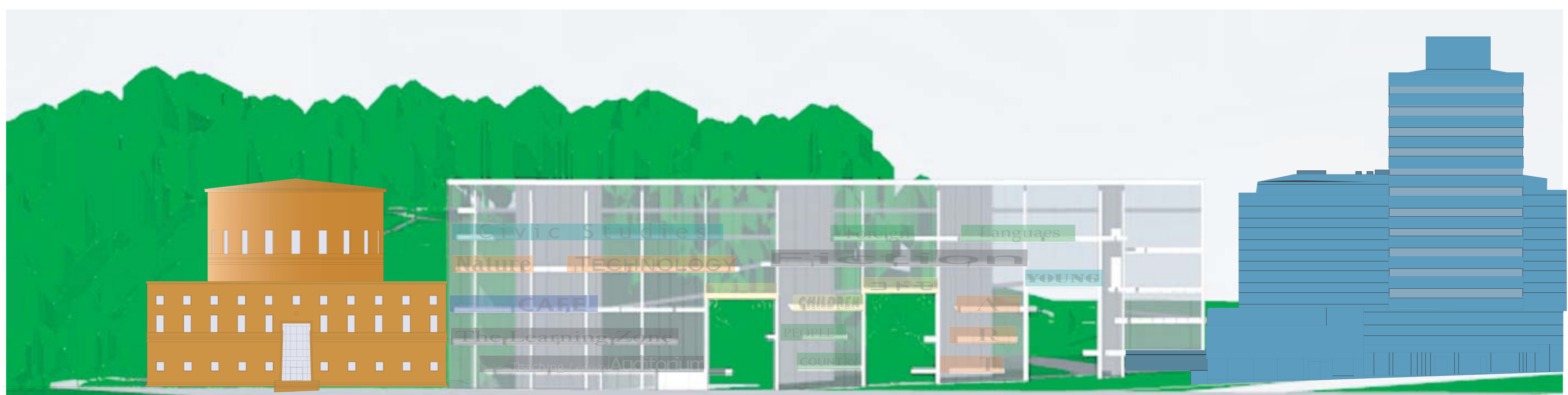
The model photo 2



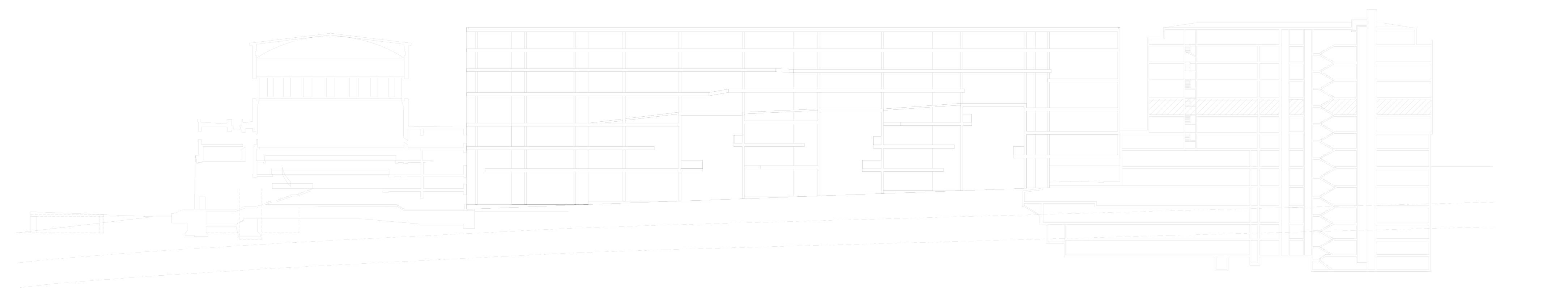
From a crossing of Sveavägen and Odengatan (File 7-b)



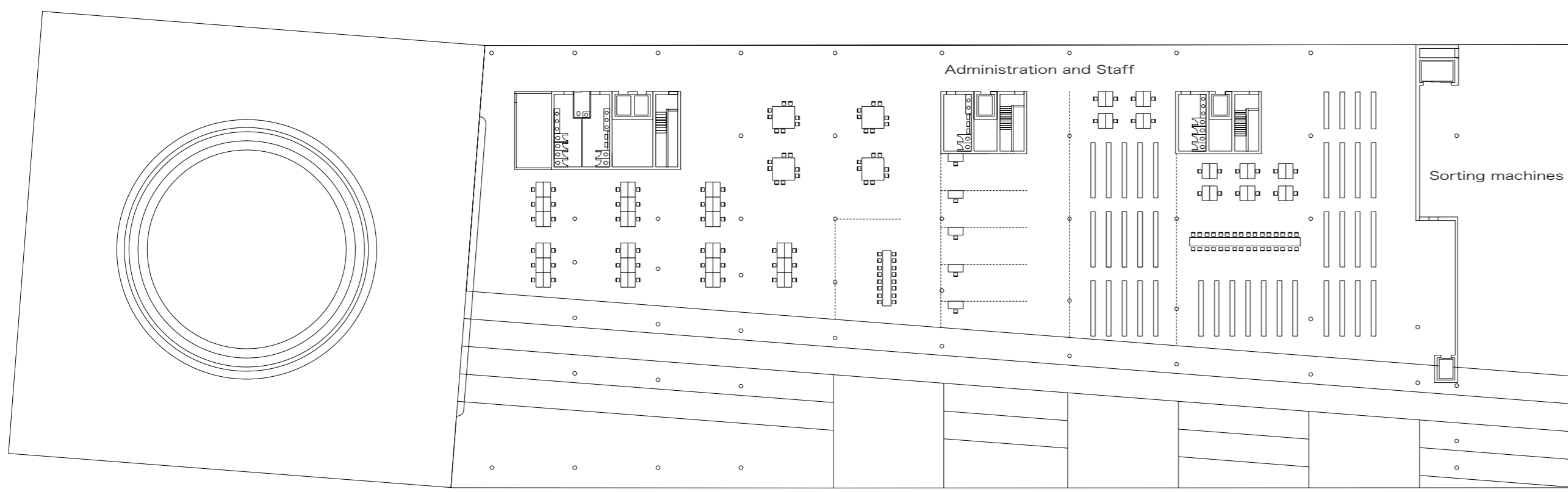
The scene from Odengatan(File 7-c)



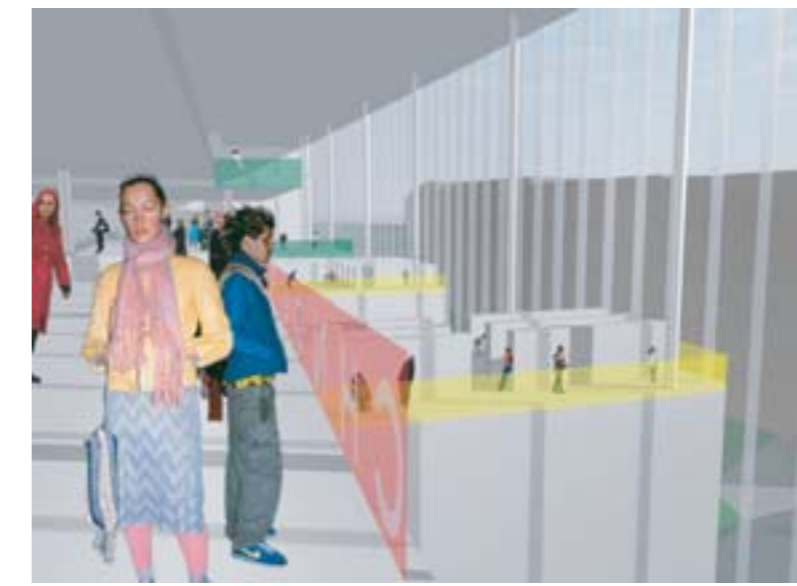
The Odengatan side front image



A-A' Section 1/500



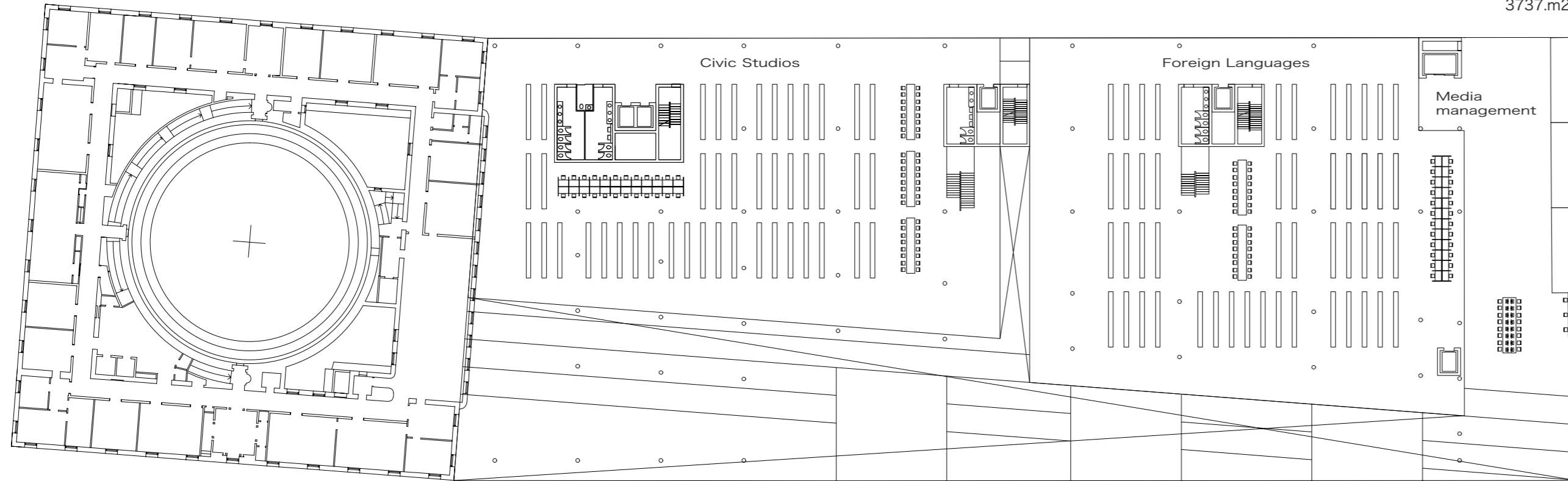
7F Plan 1/500
3737.m2



Event of form of axis 1

The space that is Void which consisted of it in an axis by the library which Asplund made.

An event of the opening that spread through a top and bottom direction and a horizontal direction is developed through this colonnade.

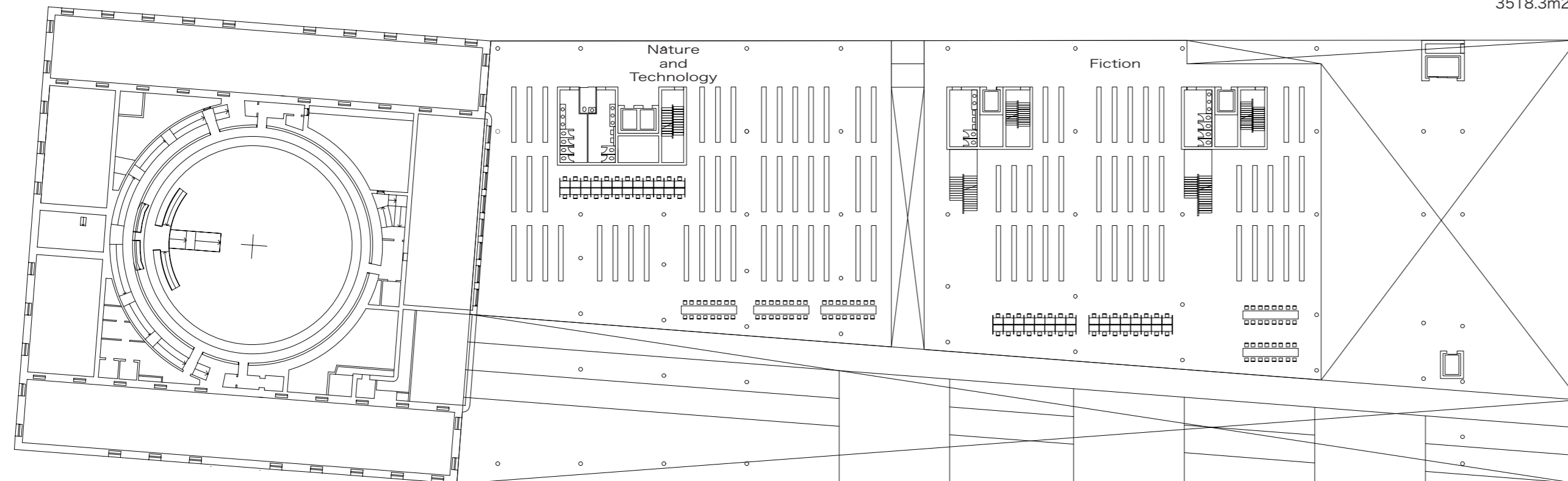


6F Plan 1/500
3518.3m2



Event of form of axis 2

As a medium connecting the top and a floor, this space have a very important element, and this colonnade lets you consist as a building of one.

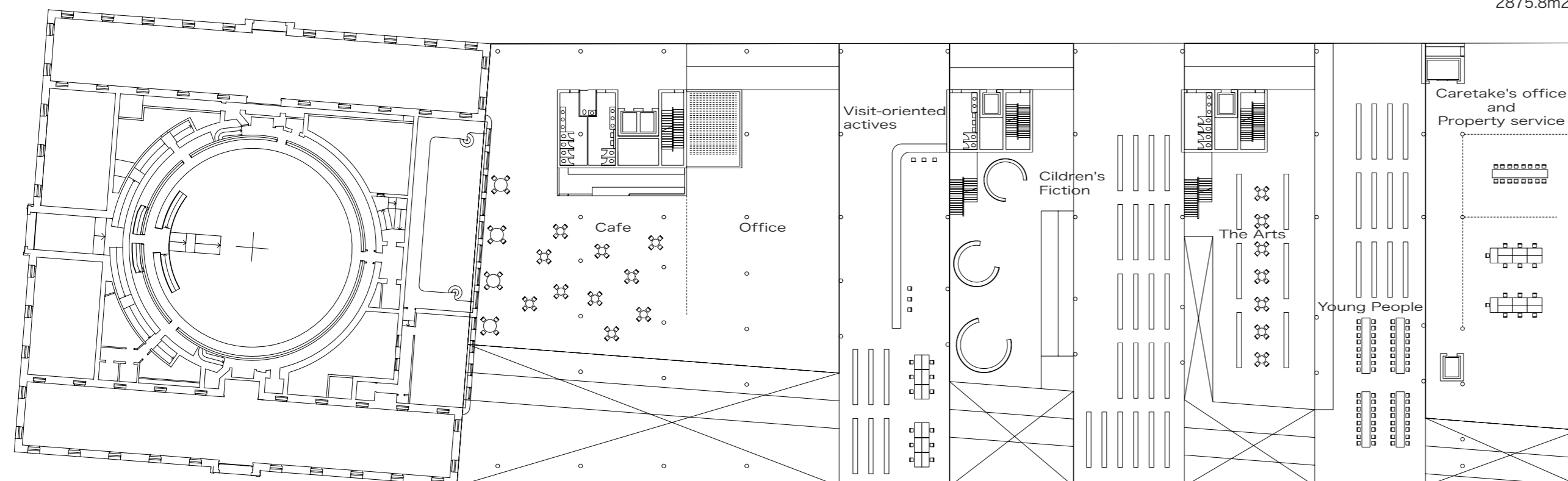


5F Plan 1/500
2875.8m2



Office Space(7F)

This air space is located in the top floor and can command a whole view of a lower floor.



4F Plan 1/500
4657m2

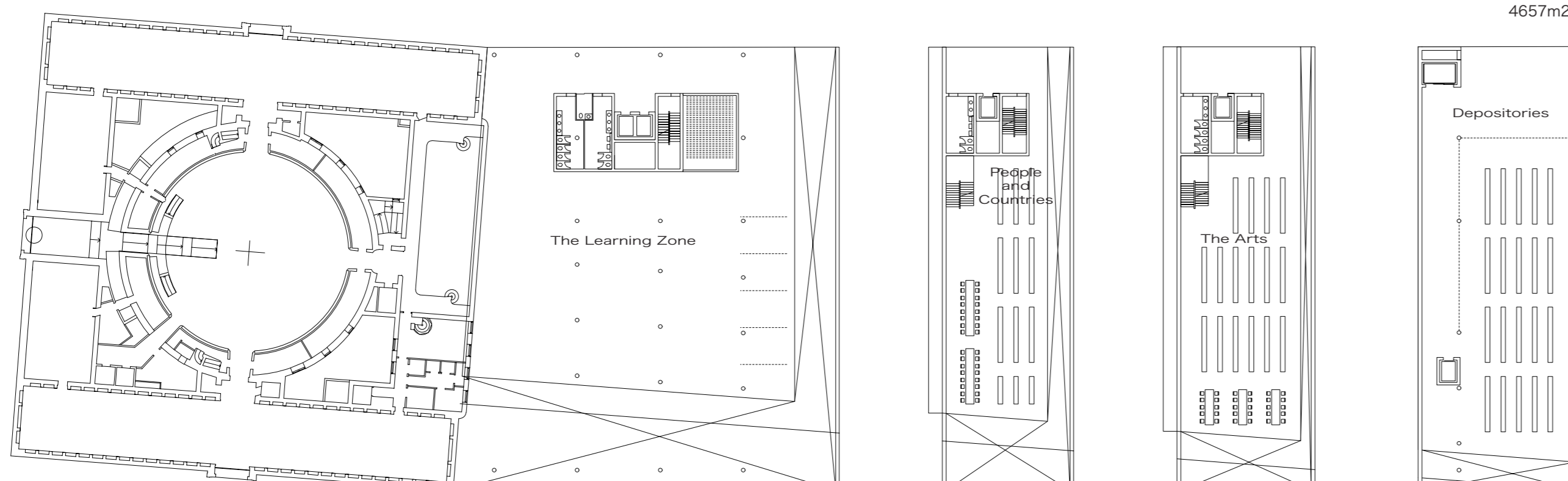


Book space(5,6F)

Open shelf such as a library of Asplund-type book air space.

There was consist of it by the space where there are a lot of bookshelves and a book made by a few place.

This space look for a book. And an encounter with a new book to discover accidentally is splendid.



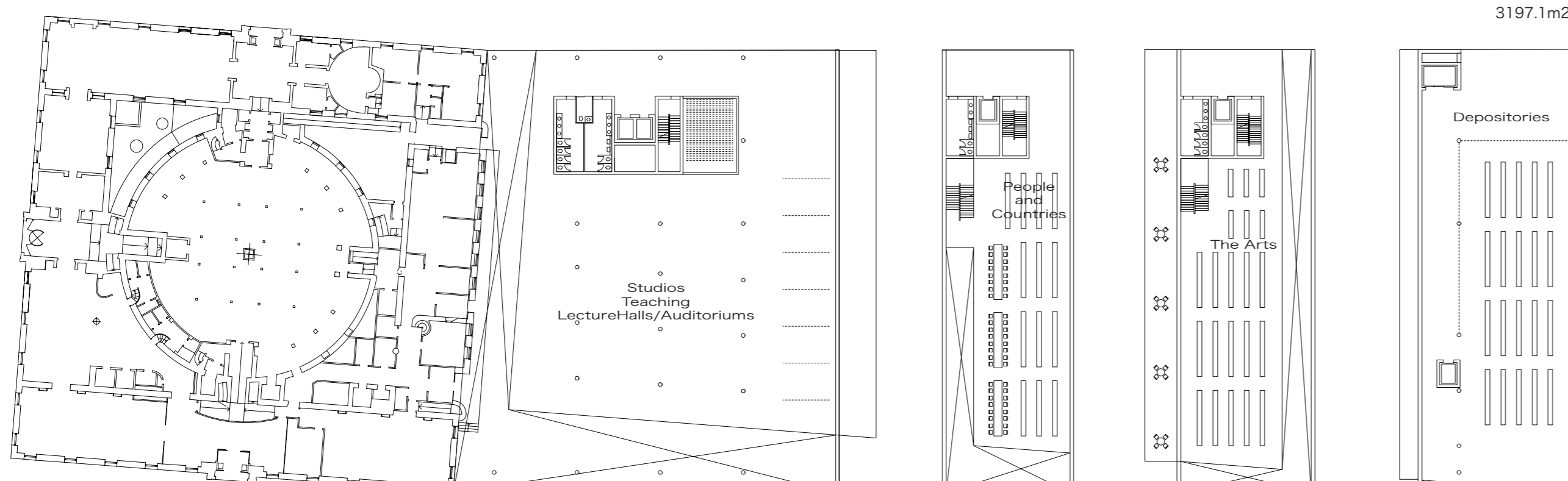
3F Plan 1/500
3197.1m2



Kids space(4F)

The space where children can play with a book. A children can experience pleasure to read a book by reading a book while playing.

A parent is easy to find a figure of a child so that we have ups and downs in space.



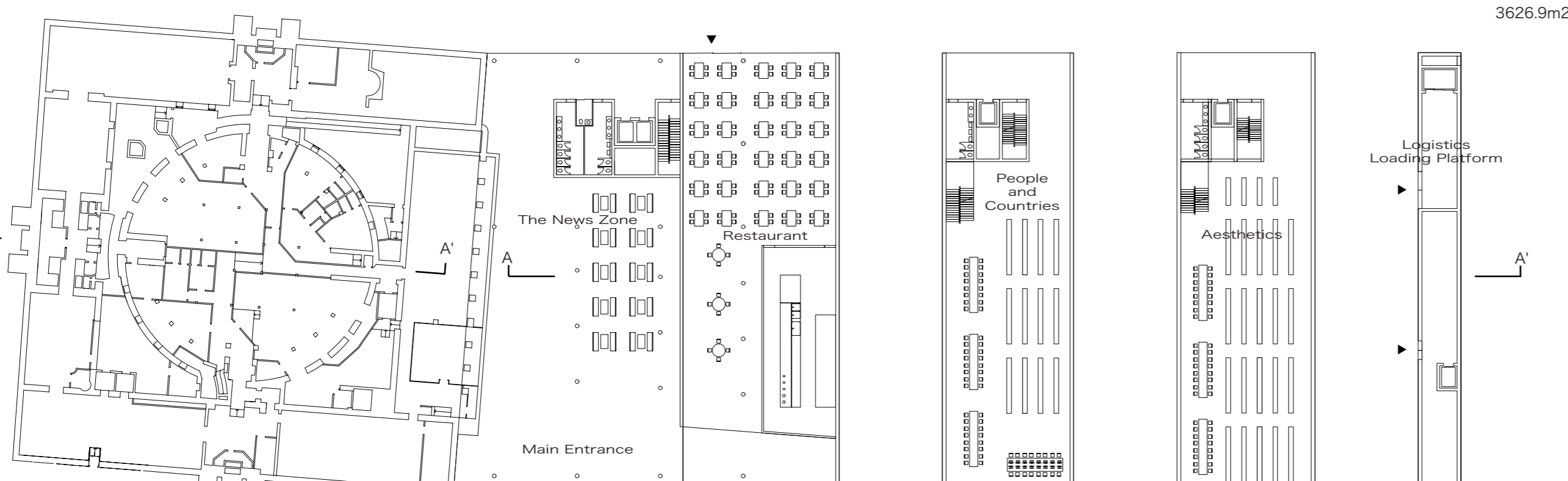
2F Plan 1/500
3626.9m2



Corridor(4F)

The rhythmic air space which consisted of it on a way and a slope of a straight line to be located in 4F.

Therefore there is vanity one of a mountain different from lower air space, and the scenery that a season changes is looked at.



1F Plan 1/500
3542.3m2



Cafe(4F)

The cafe which quenches dehydration of an interval to read a book.

We can foresee sake in an edge of 4F, a floor for one level.

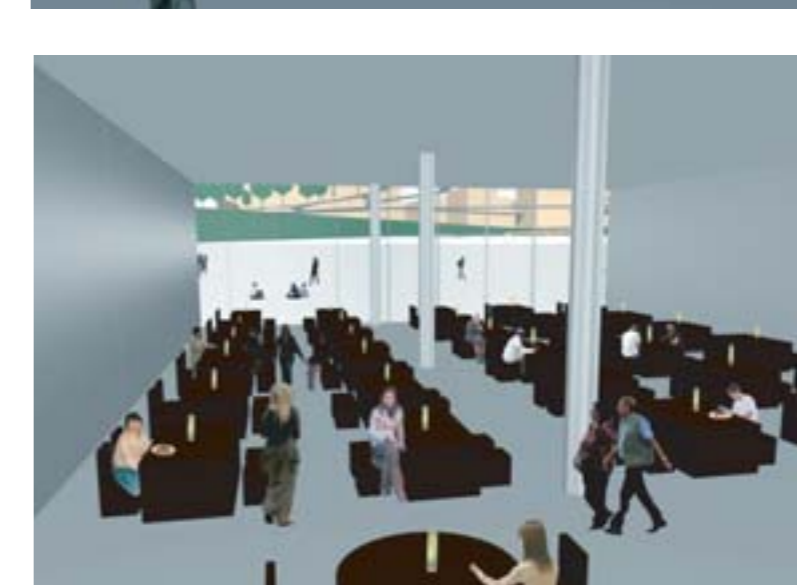


The Learning Zone, Studios, Teaching Lecture Halls/Auditoriums(2,3F)

The place that I cannot miss as a place of interchange of Stockholm citizen.

It is used as upbringing of education of children mainly, but thinks that an encounter with various people is upbringing of a child.

Therefore I open it to people of a wide age group.



Restaurant(1F)

The restaurant which is attached to this building. If we can access the person who does not use a library easily to face the first floor.



Tunnel(GL Level)

The tunnel which falls out from Odengatan to Observatoriekullen. There is it while leaving context of Annex.

In addition, it is a place of an encounter with the person who came out to a terrace of an enlarged library for a change.