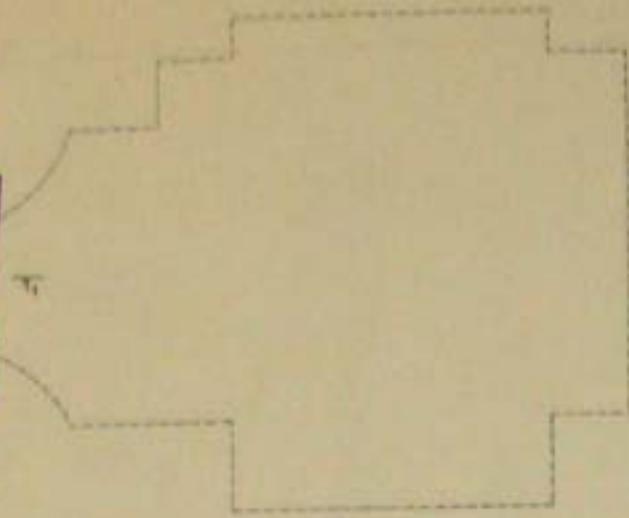
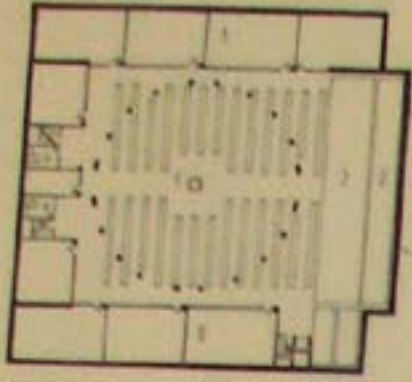
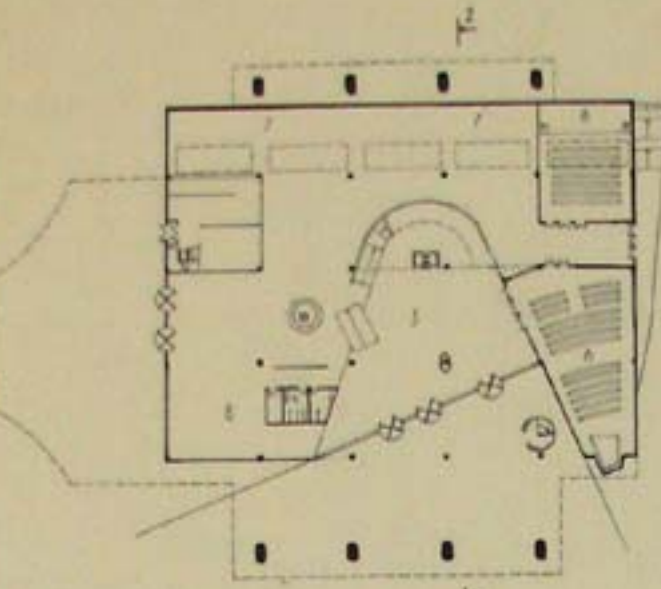


-0 FLOOR PLAN (+13.01)



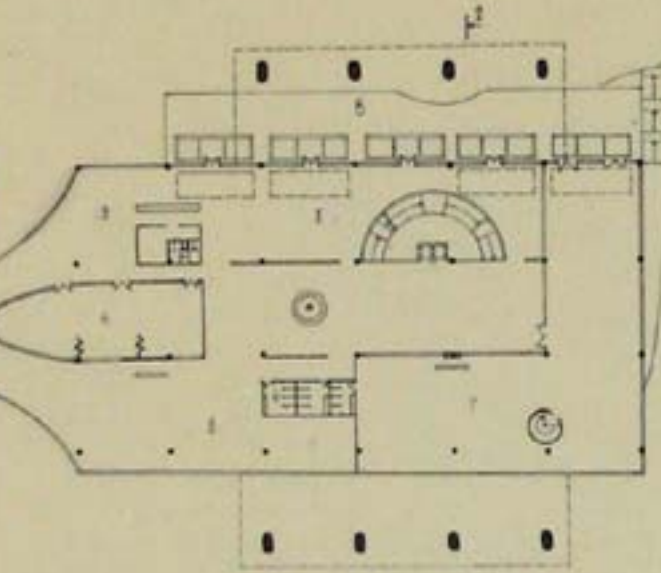
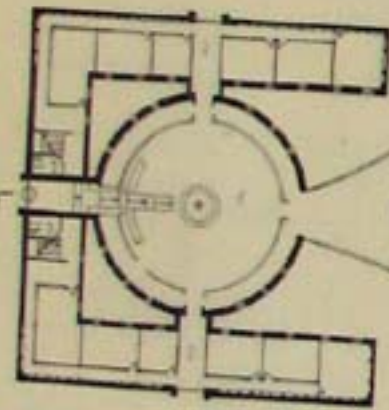
- EXPLANATION:
- 2 FLOOR PLAN
1. DEPOSITORIES
 2. COUNTERS/READING PLATFORM
 3. TOILETS
 4. MEDIA MANAGEMENT
 5. CARETAKER'S OFFICE AND PROPERTY SERVICES
- 3 FLOOR PLAN
1. ADMINISTRATION (TOILETS)
 2. READING HALL
 3. RECREATIONAL ZONE

-1 FLOOR PLAN (+15.01)



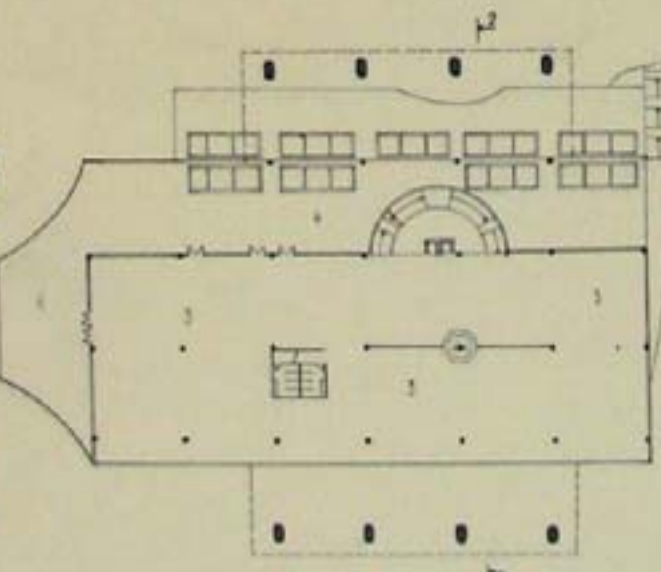
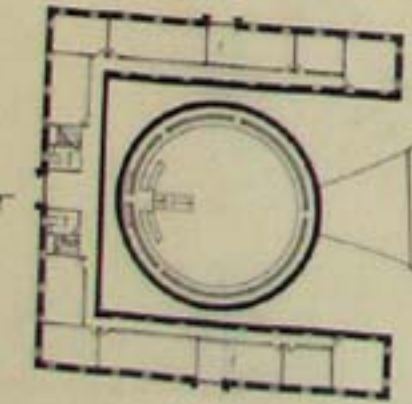
- 1 FLOOR PLAN
1. DEPOSITORIES
 2. CARETAKER'S OFFICE AND PROPERTY SERVICES
 3. MEDIA MANAGEMENT
 4. TOILETS
 5. ENTRANCE
 6. THE NEWS ZONE
 7. CAFE
 8. LECTURE HALL
- 4 FLOOR PLAN
1. FOREIGN LANGUAGES
 2. NATURE AND TECHNOLOGY
 3. TOILETS

-0 FLOOR PLAN (+18.01)



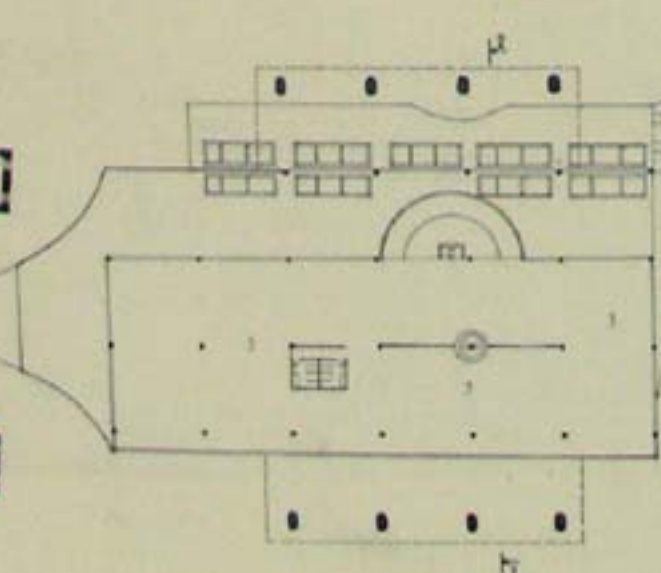
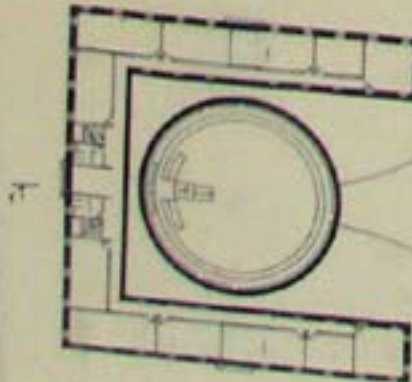
- 0 FLOOR PLAN
1. ARTS/ETICS
 2. ADMINISTRATION
 3. TOILETS
 4. TEACHING
 5. RESTAURANT
 6. THE LEARNING ZONE
 7. 24 HOUR ZONE
 8. RECREATIONAL ZONE
- 5 FLOOR PLAN
1. FOREIGN LANGUAGES
 2. NATURE AND TECHNOLOGY
 3. TOILETS

+1 FLOOR PLAN (+21.41)



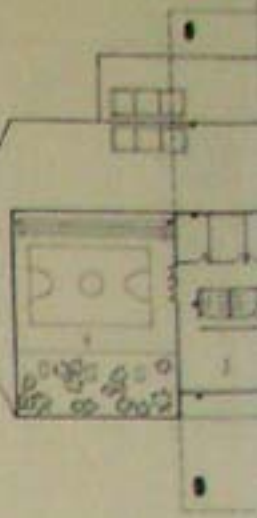
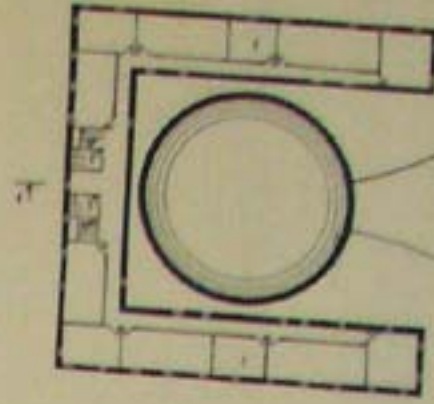
- 2 FLOOR PLAN
1. ADMINISTRATION
 2. TOILETS
 3. CIVIC STUDIES
 4. RECREATIONAL ZONE
- +0 FLOOR PLAN
1. FICTON
 2. CHILDREN'S FICTON
 3. TOILETS

+2 FLOOR PLAN (+23.91)

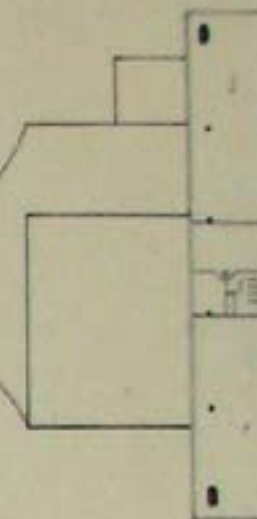
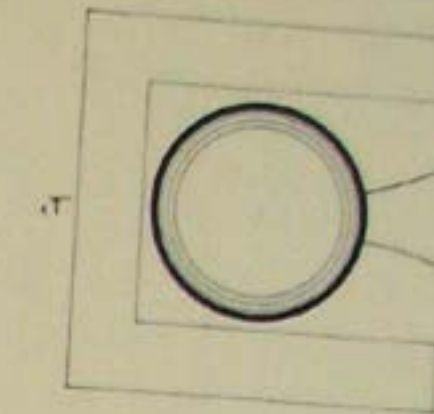


- 2 FLOOR PLAN
1. ADMINISTRATION
 2. TOILETS
 3. PEOPLE AND COUNTRIES

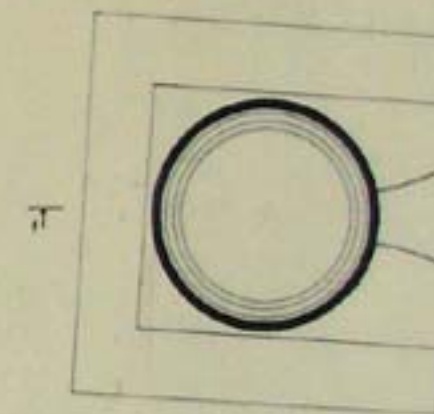
+3 FLOOR PLAN (+26.41)



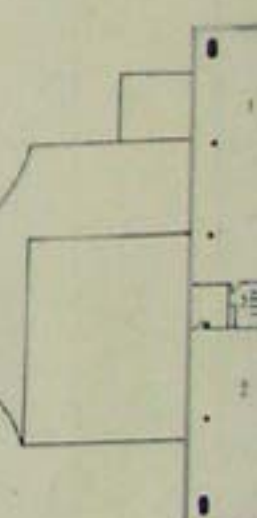
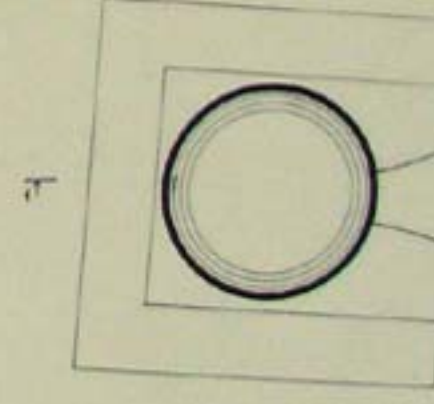
+4 FLOOR PLAN (+30.41)



+5 FLOOR PLAN (+34.41)



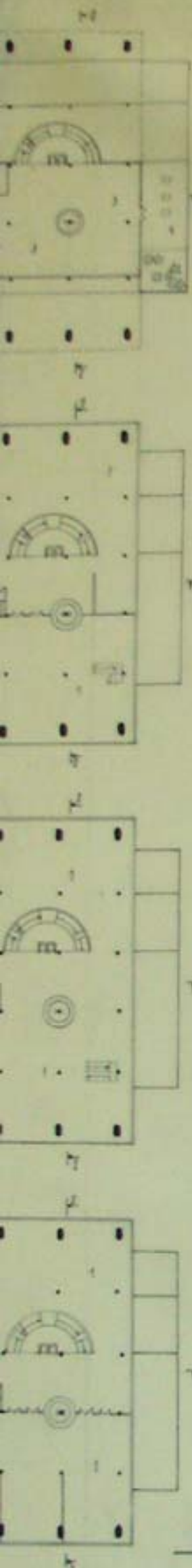
+6 FLOOR PLAN (+38.41)



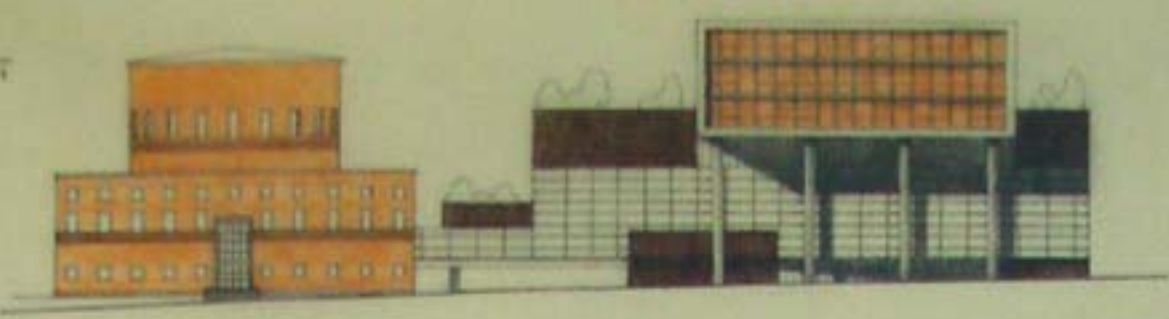
EXPLANATORY NOTE

THE CORE OF THE DESIGN WAS TO MAKE SPACIOUS ROOMS, FILLED WITH LIGHT, WITH COMFORTABLE WORKING PLACES, EXHIBIT HALLS AND RECREATION ZONES. ALL THAT ATTRACTS PEOPLE TO THE LIBRARY AS TO THE MODERN CENTER OF SCIENCE, EDUCATION AND CULTURE IN THE CITY. MONOTONOUS HOUSING, ITS STRAIGHTNESS, CLEARNESS AND TENDENCY TO HORIZONTALITY CONTRIBUTED GREATLY TO THE ARCHITECTURAL IMAGE OF THE LIBRARY'S FUTURE BUILDING. HOWEVER, THE DRAFT WAS

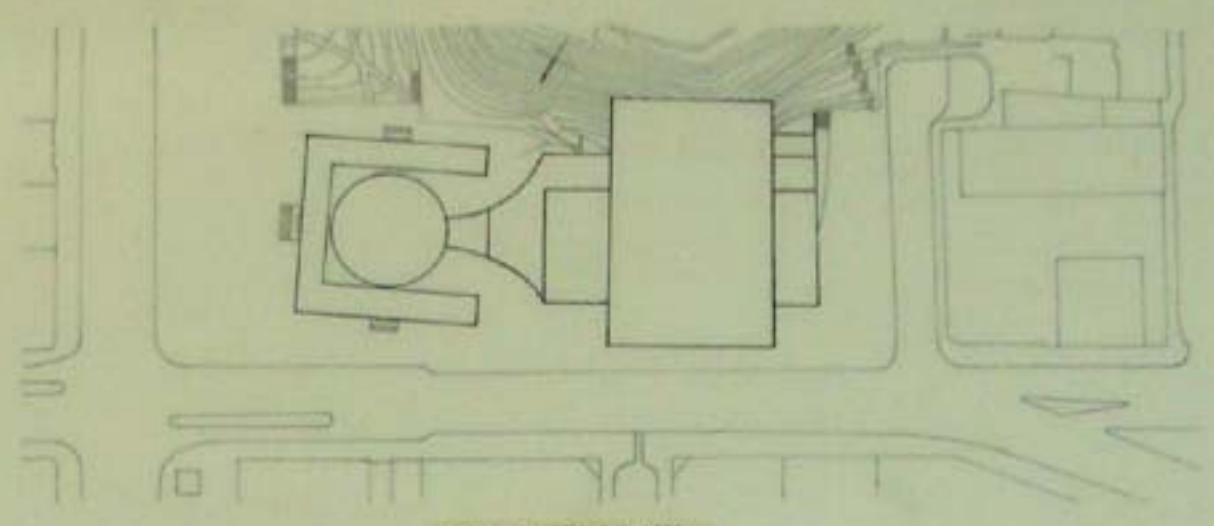
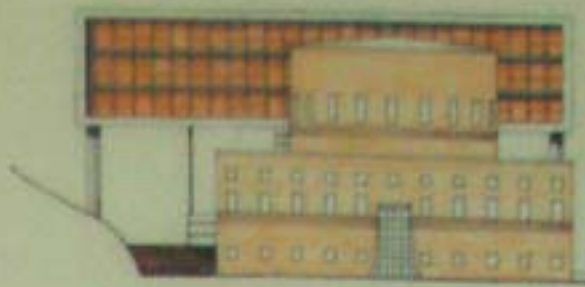
MAINLY INFLUENCED EXISTING BUILDING CORE ON THE INTERACTION GEOMETRICAL RECTANGLE AND C THESE FORMS MADE T FOR THE NEW B ARCHITECTURE THE LE MADE UP OF TWO MAIN TURNED TO EACH OTHER STAR-AND-ELEVATOR, A IN THE CENTER MAIN ENTRANCE W BUILDING OF DESCENDING RAMP AND ENTRY, DAVED IN OON TO THE UPPER FLOORS.



OCEANFRONT FACADE



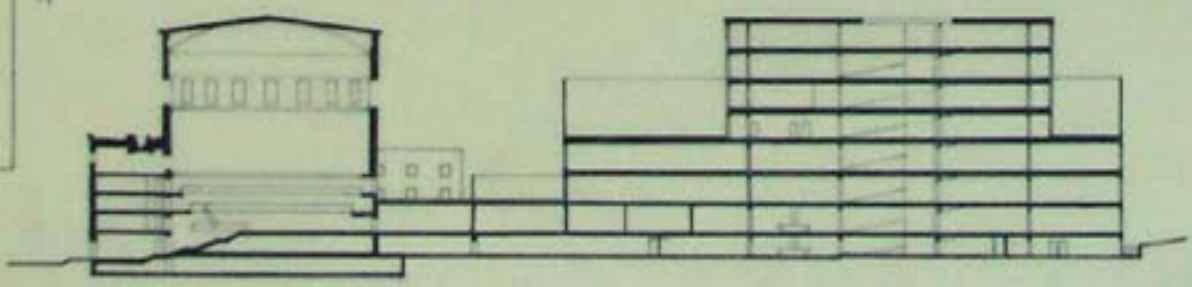
SEAFRONT FACADE



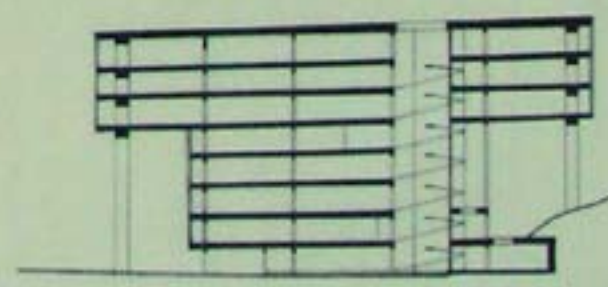
SITE PLAN SCALE 1:1000



SECTION 1-1



SECTION 2-2



THE
 TWO
 UNDER
 BASE
 LONG'S
 NY IS
 LUMES
 WITH A
 ASSEMBLY
 NEW
 BRARY
 LINEAL
 ARCHON
 HEATE

AN EFFECT OF PLUNGING A PERSON IN NEW SPACE FROM THE DARK ENTRY YOU PASS ON TO THE ROOM ENLIGHTENED WITH THE LIGHT CYLINDER OF STAIRS. TWO LOWER LEVELS OF THE BUILDING ARE ZONES AVAILABLE TO VISITORS ROUND THE CLOCK. THEY HAVE A COFFEE BAR AND A RESTAURANT WITH A COMMON KITCHEN, NEWS ZONE, LECTURE AND TEACHING ROOMS. THE UPPER LEVELS HOUSE READING ROOMS THAT ARE TOPICALLY ORIENTED. THE LIBRARY'S OLD BUILDING RESUMES ITS HISTORICAL IMAGE

THE UNDERGROUND FLOORS STILL HOUSE A STACK ROOM TO BE FILLED WITH THE NECESSARY TECHNICAL EQUIPMENT. THE ENTRY LEVEL HAS THE READING ROOM THAT RUNS TO THE UNIVERSAL HALL LEADING TO THE NEW BUILDING. THE ADMINISTRATIVE PART IS ALSO IN THE BUILDING OF ASPLUND. THE TECHNICAL CONNECTION BETWEEN THE BUILDINGS IS THROUGH THE UNDERGROUND HALL. THE LIBRARY'S DESIGN WAS ALSO SANCTIONED BY THE

INTERCONNECTION OF THE BUILDING WITH THE ENVIRONMENT VISITORS CAN GO TO OPEN TERRACES FROM THE READING ROOMS, RESTAURANT AND TEACHING ROOMS. THE RECREATION ZONES, BESIDES PLAYGROUNDS, THE TERRACE FLOOR WILL HAVE LIGHT HOLES SO THAT THE LIGHT COULD PENETRATE DOWNSTAIRS. THE BUILDING'S CONSTRUCTIVE SCHEME IS 12 M COLUMN GRID. THE BUILDING MATERIAL IS CAST-IN-PLACE AND PRECAST CONCRETE. THE FACADE AND

ROOMS ARE FINISHED WITH TV-MATERIALS. MATTE-STAINED GLASS AND WOOD PANELS. THE GREAT SURFACE OF THE FACADE IS GLAZED TO ALLOW THE LIGHT TO PENETRATE THE READING AND LECTURE ROOMS. THE GLASSES' COLOR SCHEME FOLLOWS THE COLOR SCHEME OF THE OLD LIBRARY. RECREATION ZONES ARE FINISHED WITH WOOD PANELS.