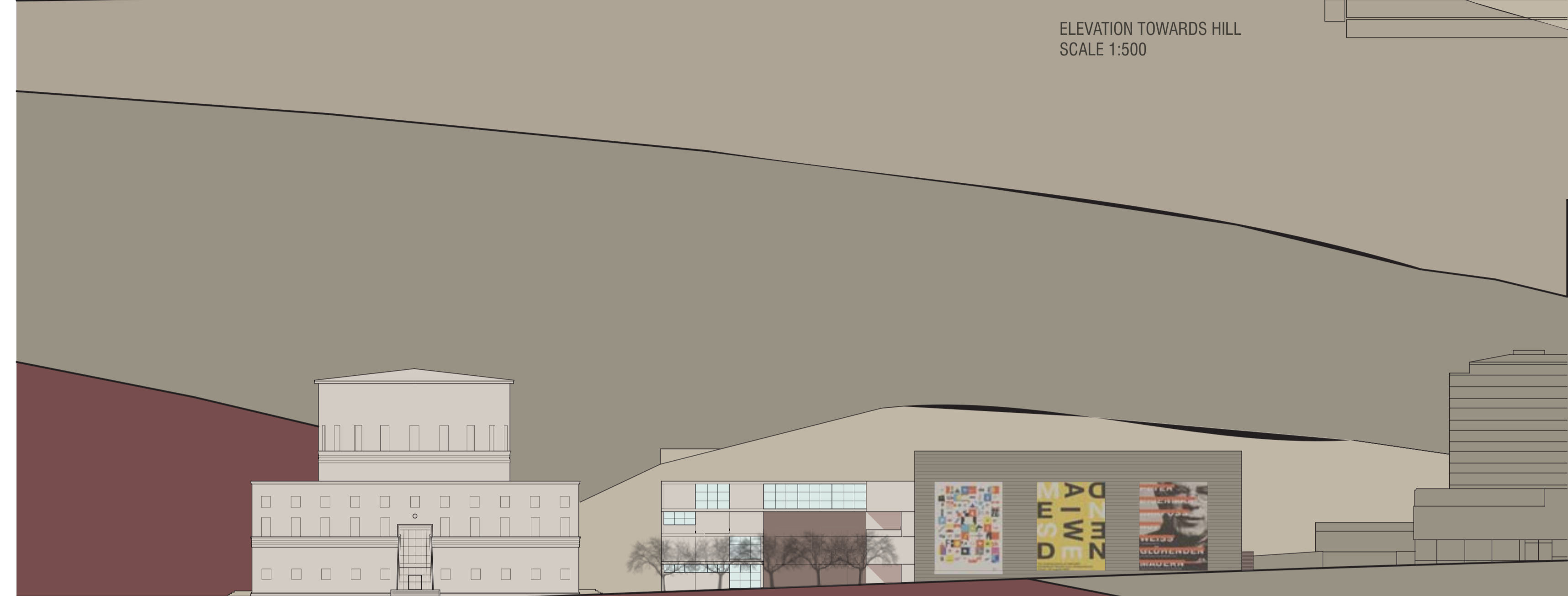
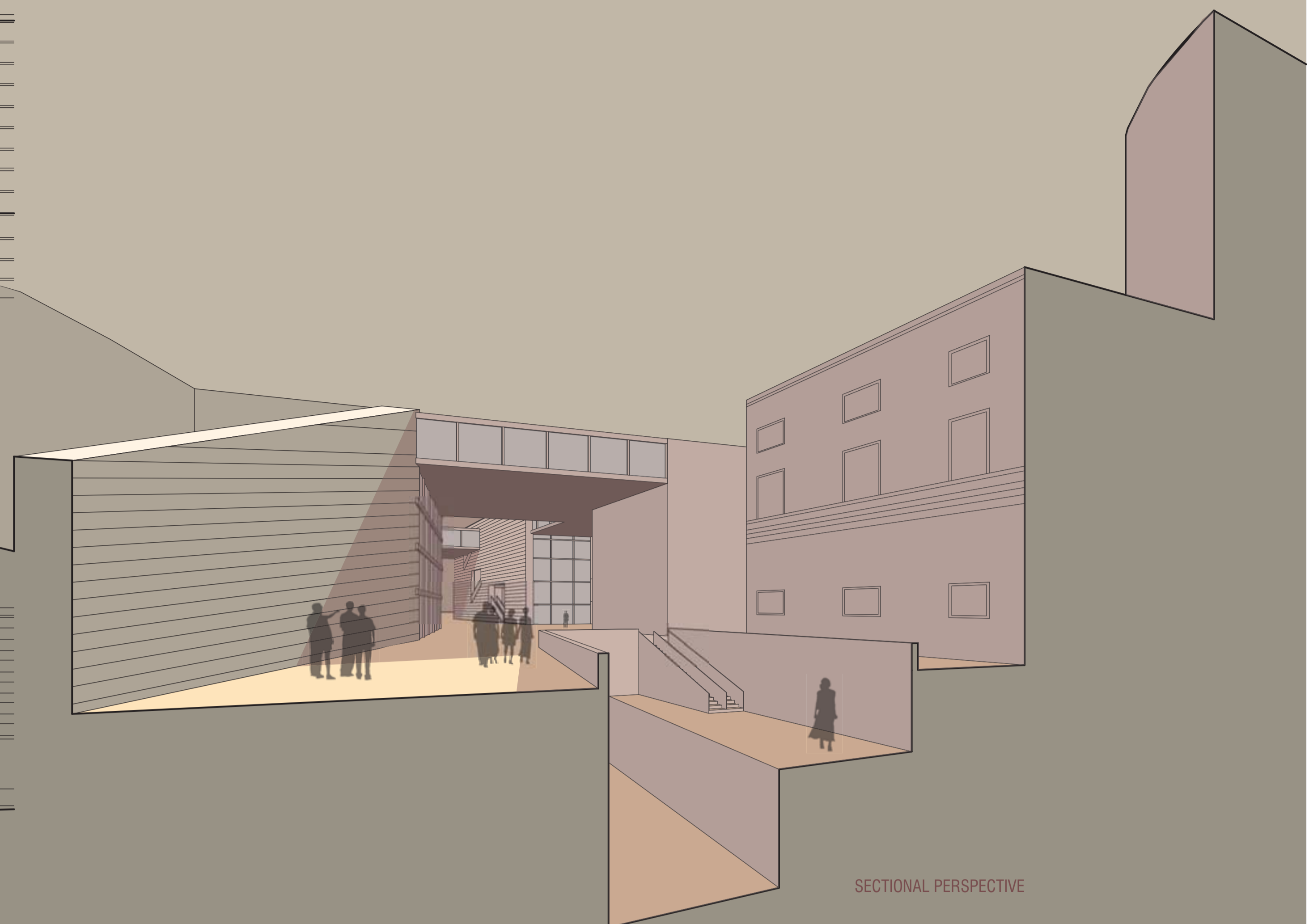


ELEVATION TOWARDS HILL  
SCALE 1:500



ELEVATION FROM ODENGATEN  
SCALE 1:500



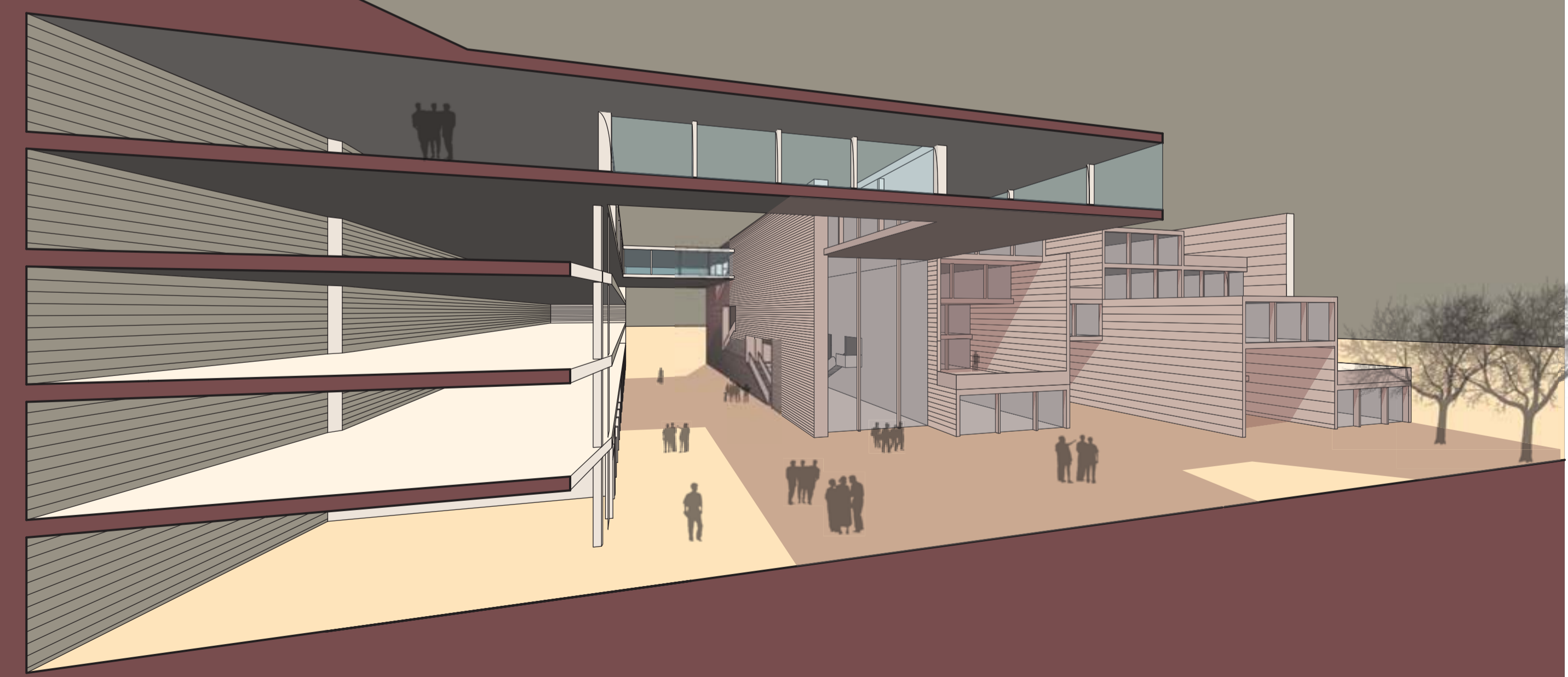
SECTIONAL PERSPECTIVE



PERSPECTIVE FROM NORRTULLSGATAN



PERSPECTIVE FROM NORRTULLSGATAN

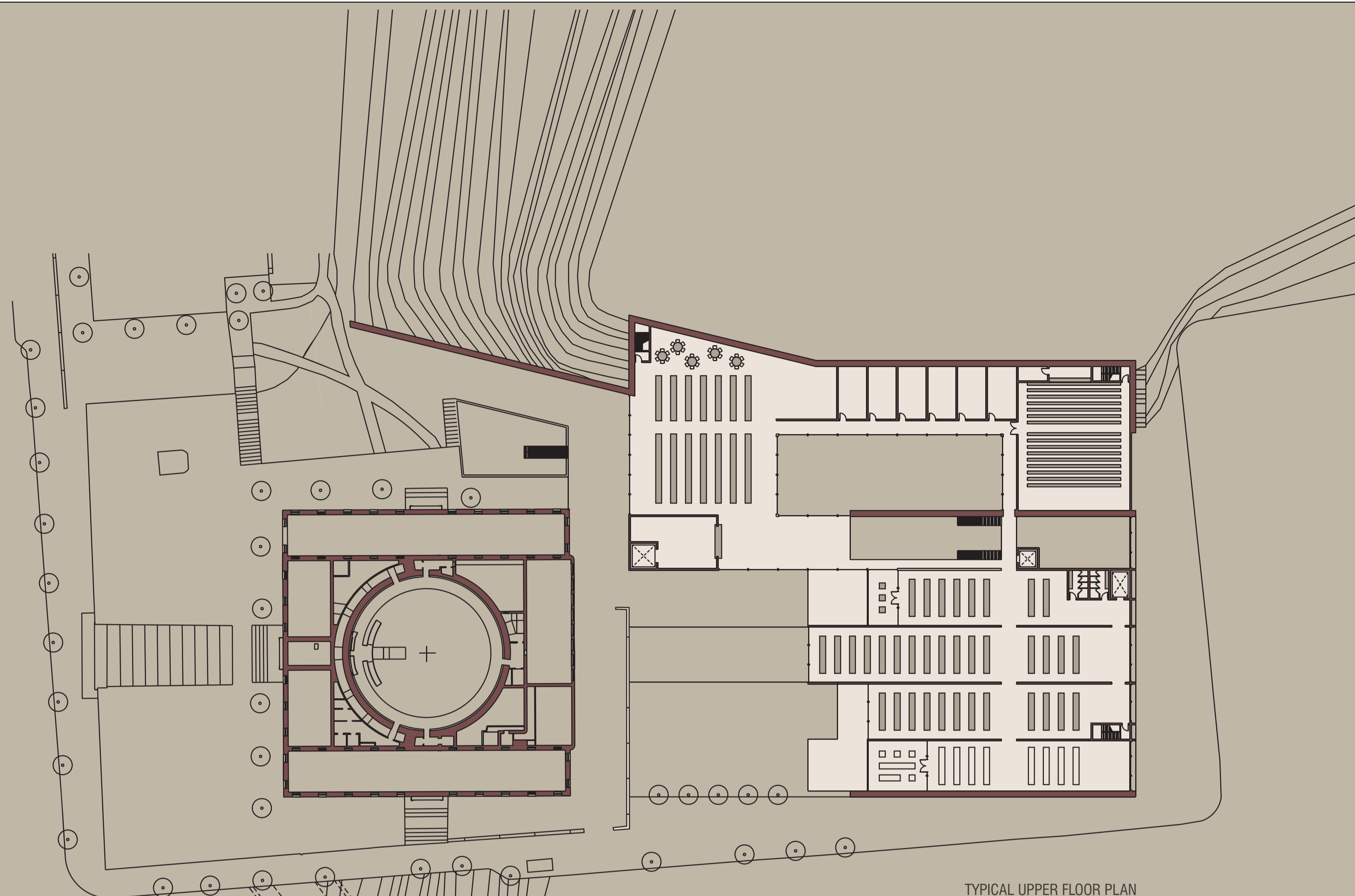


SECTIONAL PERSPECTIVE

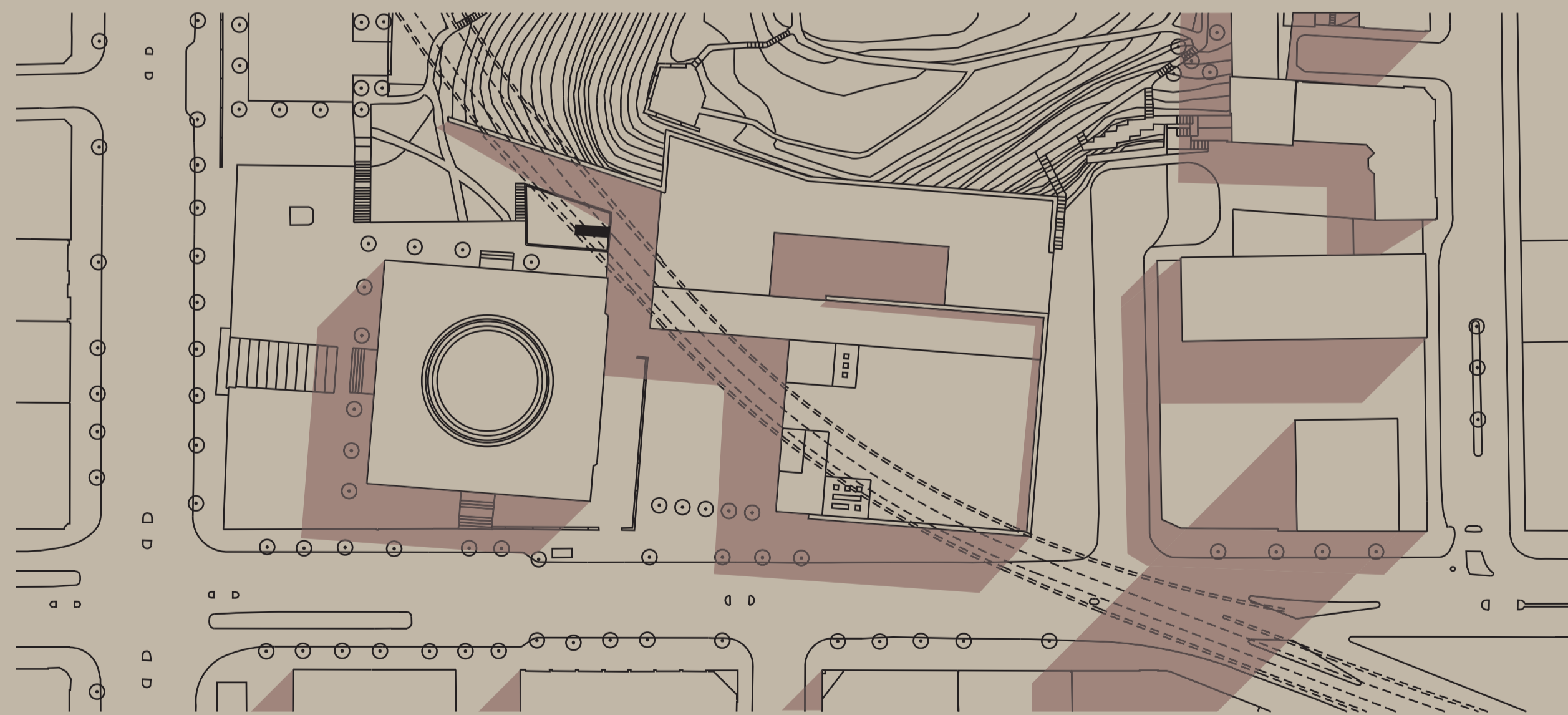


# A CULTURAL MARKET

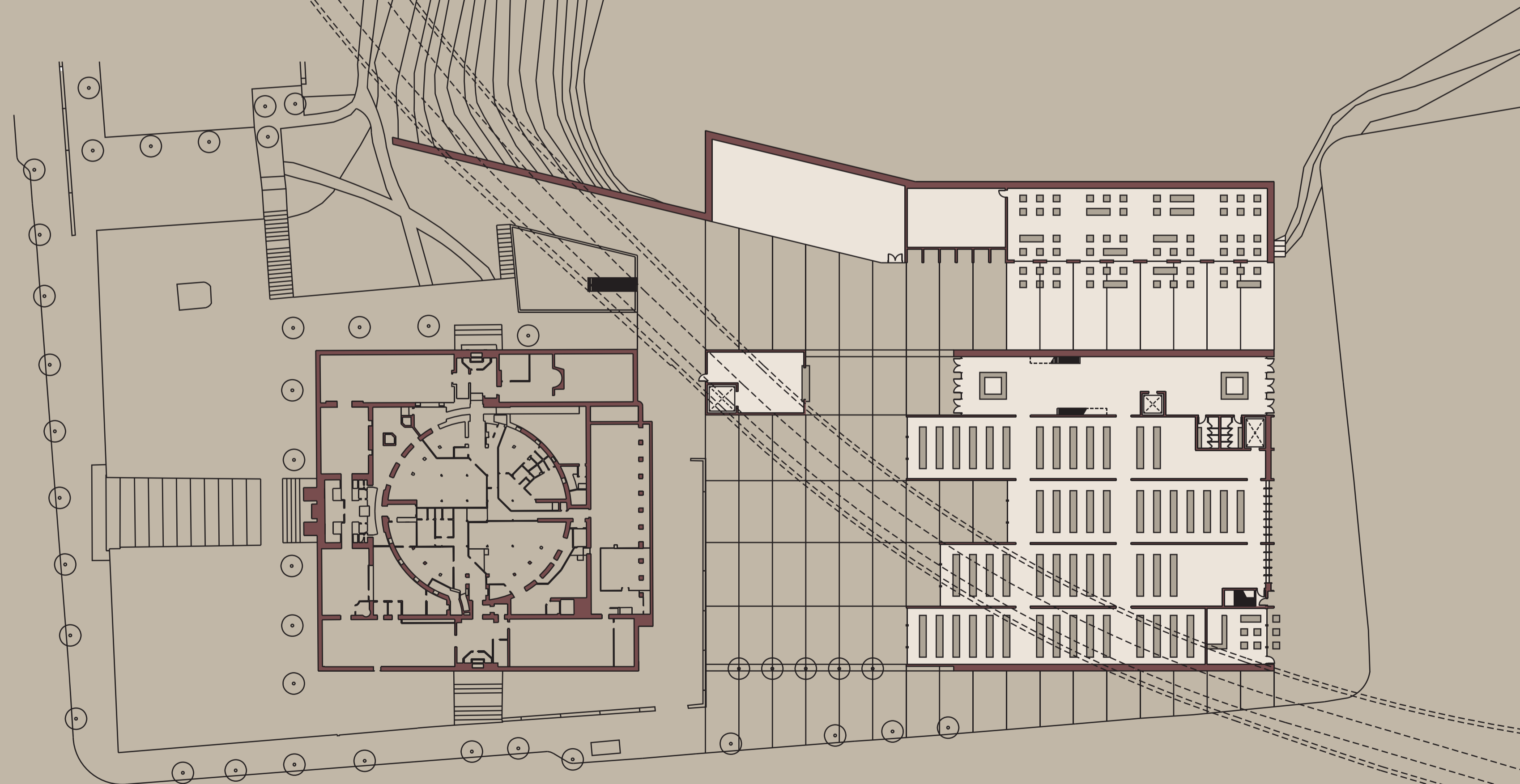
The design for the Stockholm City Library enriches the city by creating a place for everyone to gather and share knowledge. Two structures make up the new building, one responding to the existing library and one for the city. Stacks and other traditional functions are placed in the space opposite Asplund's library, and high technology and communication related areas are dug into the hill, facing the city. These "brackets" embrace the site and form an exterior public meeting ground in between.



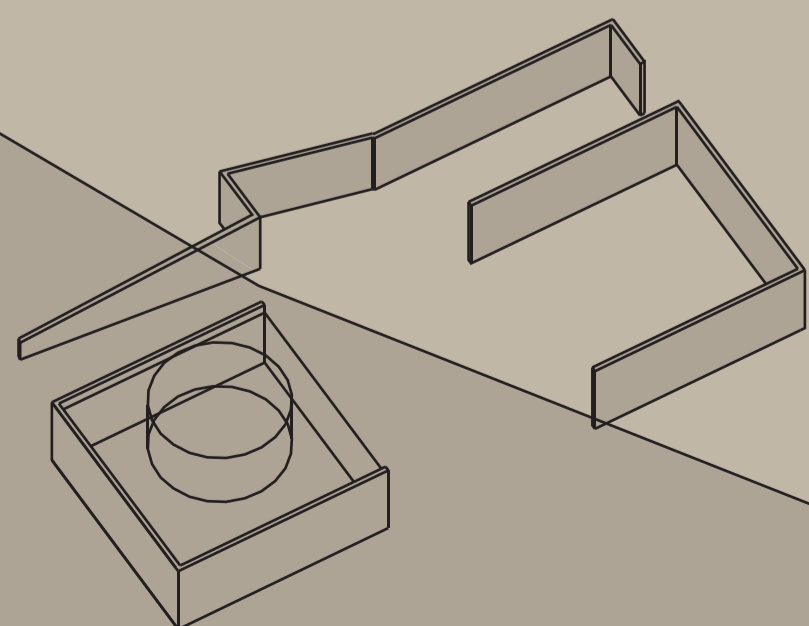
TYPICAL UPPER FLOOR PLAN  
SCALE 1:500



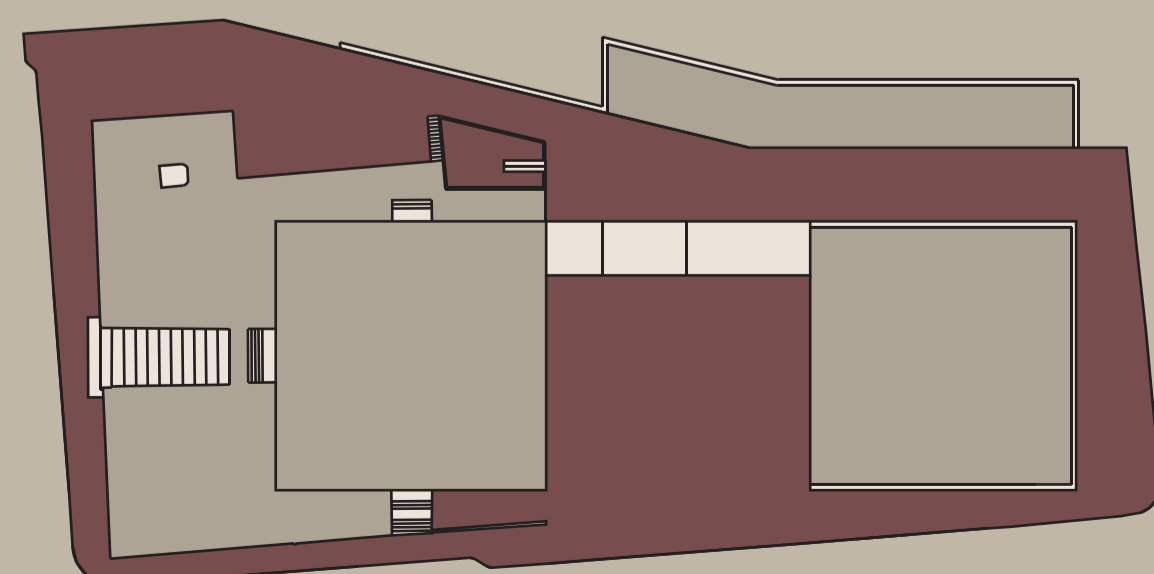
SITE PLAN  
SCALE 1:1000



TYPICAL LOWER FLOOR PLAN  
SCALE 1:500



BRACKETS



SITE AS PUBLIC SPACE