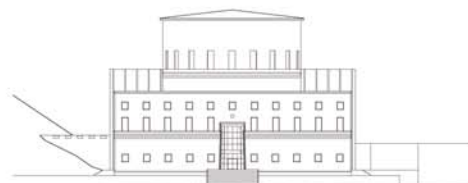
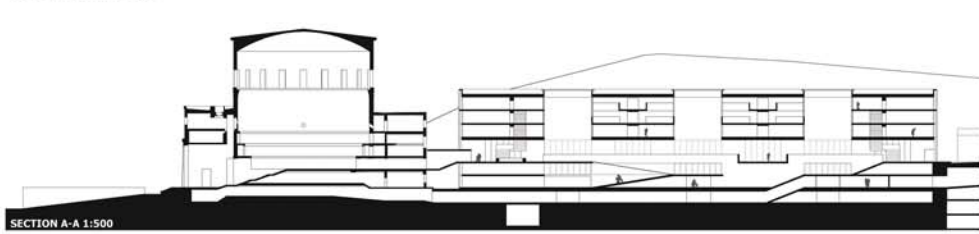


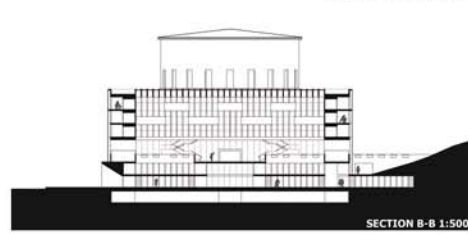
FAÇADE ODENGATAN 1:500



FAÇADE SVEAVÄGEN 1:500



SECTION A-A 1:500



SECTION B-B 1:500

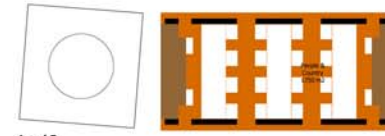


SITE PLAN 1:1000



ASPLUND
THE STOCKHOLM CITY LIBRARY

PROGRAM SKETCH : 23 770 m2 MUA
1 : 1000



Level 5



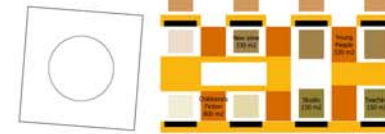
Level 4



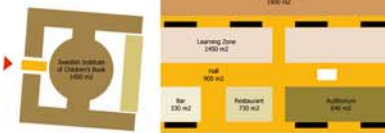
Level 3



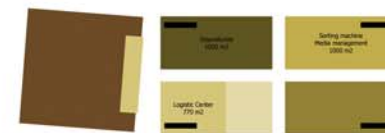
Level 2



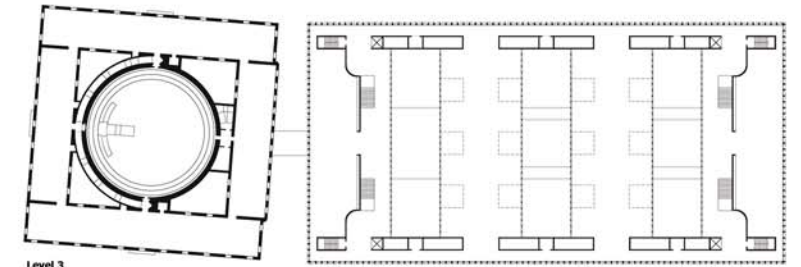
Level 1



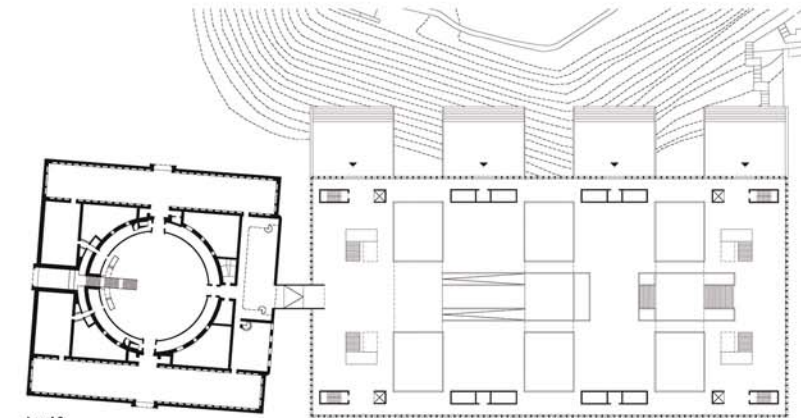
Level 0



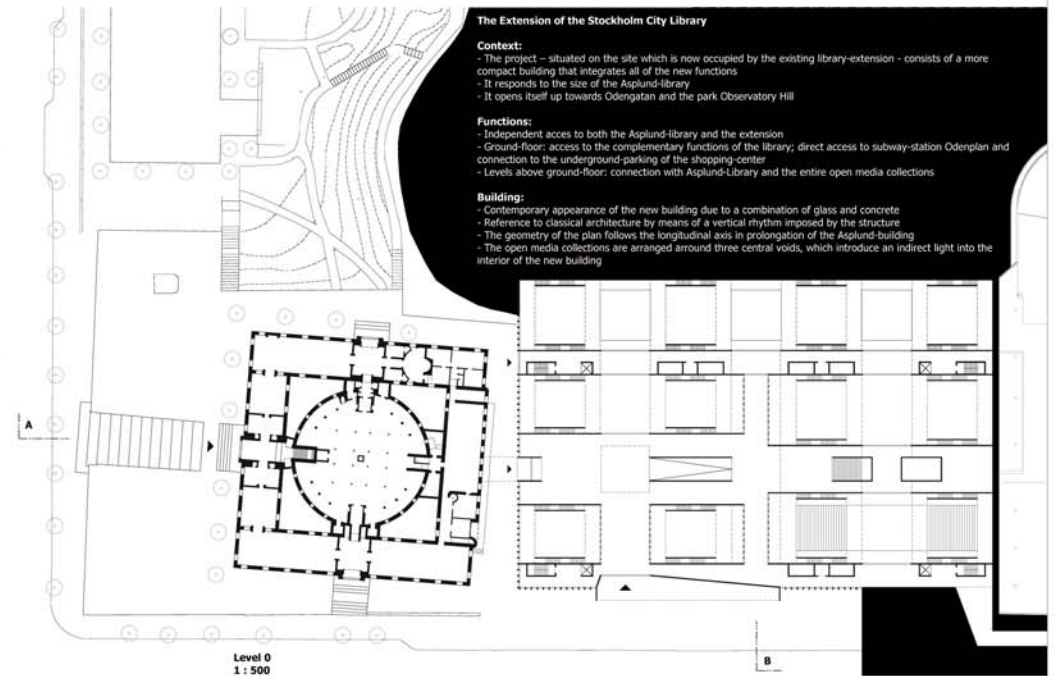
Underground



Level 3
1 : 500



Level 2
1 : 500



Level 0
1 : 500

The Extension of the Stockholm City Library

Context:

- The project - situated on the site which is now occupied by the existing library-extension - consists of a more compact building that integrates all of the new functions
- It responds to the size of the Asplund-library
- It opens itself up towards Odengatan and the park Observatory Hill

Functions:

- Independent access to both the Asplund-library and the extension
- Ground-floor: access to the complementary functions of the library; direct access to subway-station Odergatan and connection to the underground-parking of the shopping-center
- Levels above ground-floor: connection with Asplund-library and the entire open media collections

Building:

- Contemporary appearance of the new building due to a combination of glass and concrete
- Reference to classical architecture by means of a vertical rhythm imposed by the structure
- The geometry of the plan follows the longitudinal axis in prolongation of the Asplund-building
- The open media collections are arranged around three central voids, which introduce an indirect light into the interior of the new building

