

Longitudinal section 1/500



2nd level 1/500



1st level 1/500

Public general entrance
Relation between new and old buildings through a landscaped open-space with wooden blocks



Master plan 1/1000

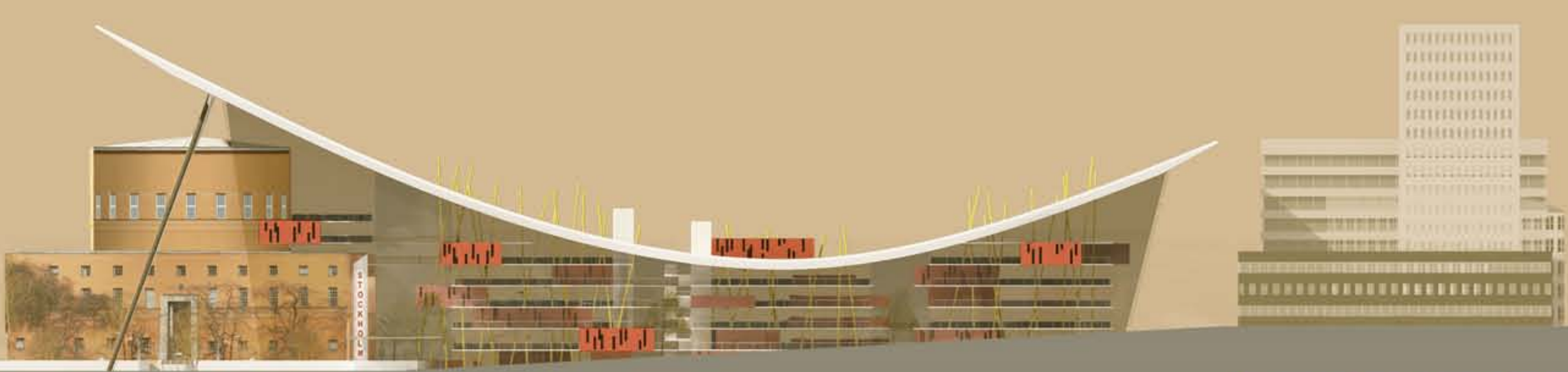
Cross section 1/500



In order to open national and international culture and knowledge to a larger public, **Stockholm city** has decided to build a new extension for the **City Library** whose scale becomes a quite big metropolis one. This new cultural building with modern style is located in a remarkable environment against the former Library in direct relationship with the observatory's hill.

We have decided to opt for a resolutely contemporary, **transparent** and opened architecture mainly to preserve the surrounding site and to keep a nice view on the hill. This visual opening is functional too, helping the different sorts of publics to get some beneficial and useful social exchanges among them. Some inside patios decorated with plants extend the hill until the main street and divide the building into three entities following Stockholm City Library's program. Regarding the **coloured wooden** traditional Swedish architecture, many closed elements add some intimacy, diversify and make the whole existing building more conspicuous. Finally the curved protective roof unifies the entire project, connects it to the existing building and thus offers a clear reading of the project's total scale.

Thus we thought the library like a "**village**" in the metropolis centre; a well spaced out, landscaped and social public space. This new looking building with a quite big city dimension offers also a **scale diversity** from the site until the ergonomics.



Longitudinal elevation 1/500



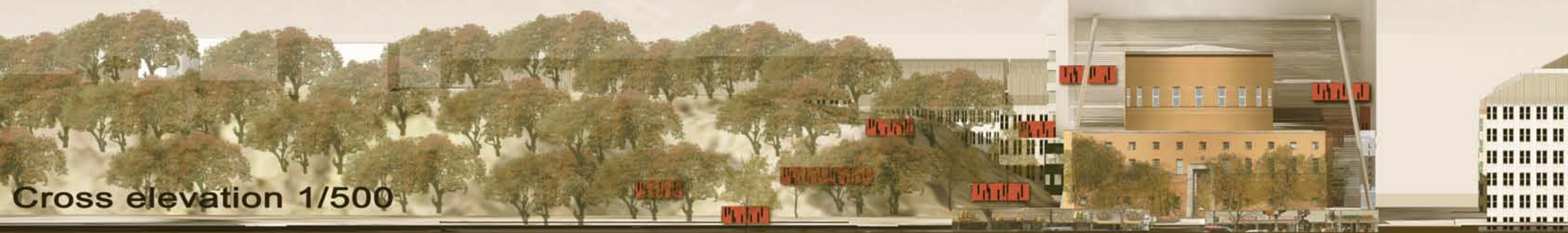
View of the existing building



View of the new building



Aerial perspective



Cross elevation 1/500

STOCKHOLM LIBRARY

COMPETITION 2006