

To create the united library complex we must preserve the original spirit of the temple, which was consecrated by the great architect Gunnar Asplund. So, we accept a rhythm given by Asplund with the accommodation of the annexes. The place of not constructed annex, where Spelbolskan square is located now, we fill with space of the six-level entrance hall. The accurately put annexes remind the books, for which it is necessary to design a shelf.

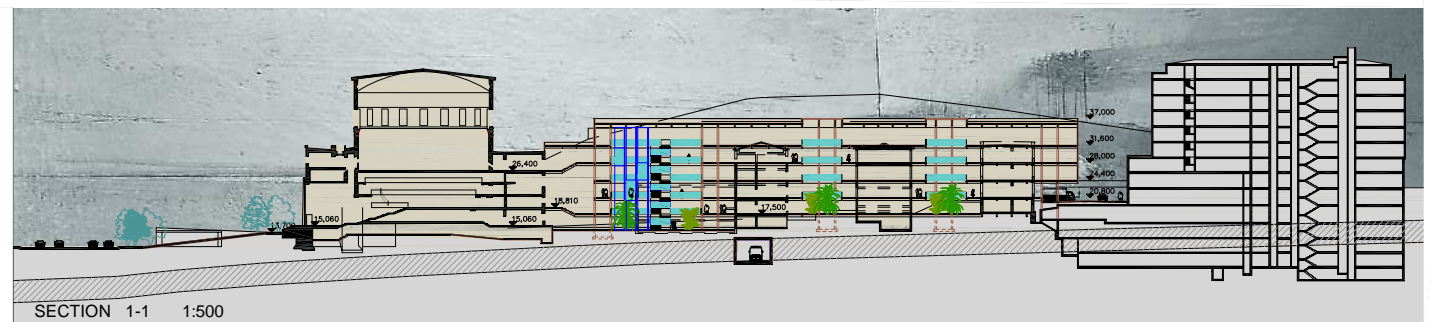
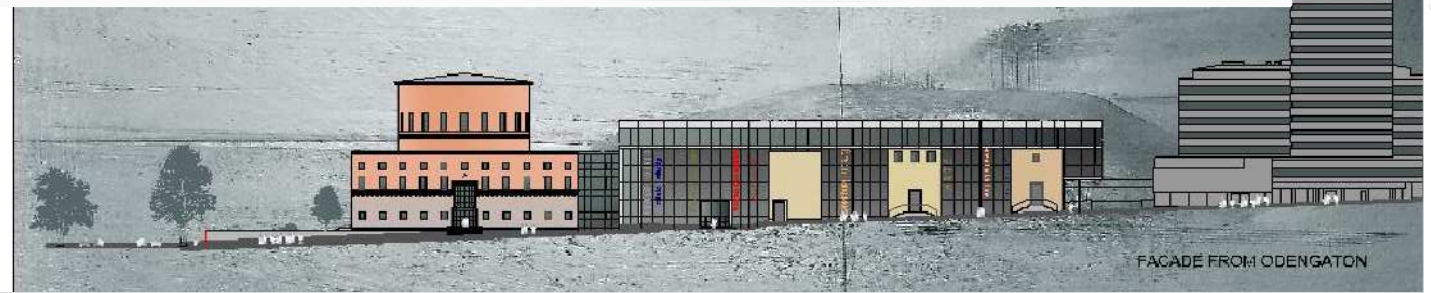
For the convenient functioning of the overall structure we bring floor levels to identical altitude marks, accepting the levels of the annex 3 with the floor height 3,6 m, as a basis. Another ones from accepted levels are dismantled and the new floor panels are arranged. The coverings of all annexes removed and the common top plate of the shelf is constructed. It covers "the books", leaning not on them, but on the new columns. The outside and carrying internal walls of the annexes are preserved. In places, where there is no need for windows or doors, there are apertures without filling, rhythmically alternating with piers.

The basic axis of the library complex begins from the main entrance of the Asplund building, passes through rotunda, western wing and new extension with the light fracture at the same angle, which was used by Asplund in the arrangement of the library. It is the main street of the library. It is possible to get on the main street from the new entrance from Odengatan also. Left turn - there is Asplund building, in which Children's Fiction area remains. Fiction area, which is used by the people of all trades and age groups and Swedish Institute of Children's books are in Asplund building too. The areas of Children's Fiction and Swedish Institute of Children's books are increased at the expense of 4-level "buffer" volume, attached to the western wing of Asplund building and new entrance hall. There is Civic Studies area in front of the new entrance on the crossing of public ways. Auditoriums are situated at the level 3 and 6, which are directly connected with Asplund building. Right turn - the main street passes through Nature & Technology area, internal courtyard with People & Countries and Foreign Languages areas, next courtyard with Arts and Aesthetics areas.

The space between the main library street and Odengatan is not built, with the exception of the balconies and the glass walls between the opaque planes of the facades of the annexes. This part will be used for reading and study. The space between the main library street and Observatory Hill is built up completely and it is used for the open-shelf facilities and reading. All subject areas are put in equal conditions and each of them occupies 5 levels. There are popular editions, magazines, departments for children on the lower levels. The professional literature on the more high levels answers higher levels of knowledge, media of advanced science achievements, rarities, antiques are on the top level. In each subject area it is possible to find a place on need and taste - to north or to the south views, on any floor, in silent or crowded place. Each subject area differs by the colour of the floor, inscriptions on the floor and on the book end faces - facades, behind which they are (inscriptions are on English according to competition brief, but traditionally the inscriptions on the libraries were on Latin).



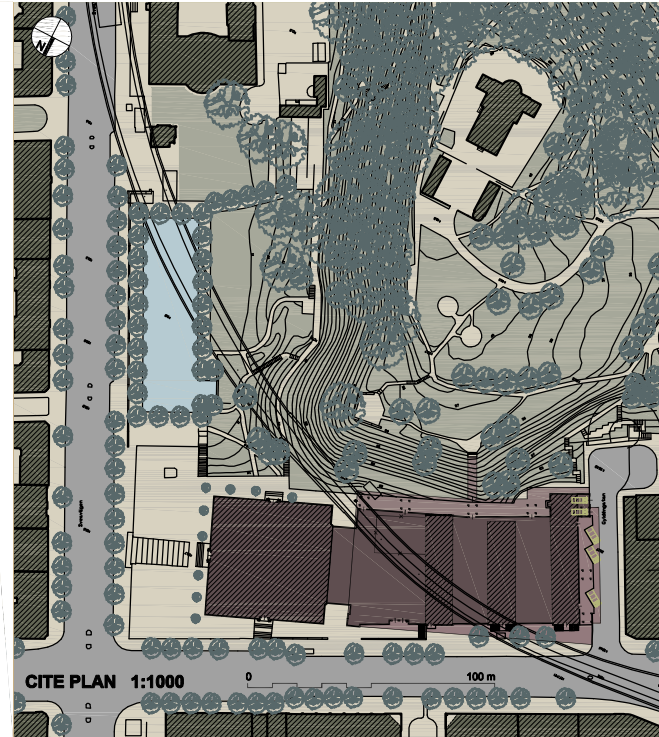
7shelf 11



/Asplund
Architectural
Competition
The Stockholm
City Library

Gross area 30 000
 Main usable area 24 400

Entrances 670	The News Zone 300	Learning Zone studios, teaching auditoriums 2400
Fiction 1600	Children's Fiction 900	Foreign languages 2000
The Arts 1880	Aesthetics 770	Civic & studies 1750
Nature & technology 1550	People & countries 1940	visit-oriented activities offices 1500
depositories 2000	logistics 700	restaurant 730
sorting machines media management	administration and staff 2000	Swedish institute of children's books 1200
cafe 320		



7shelf 1