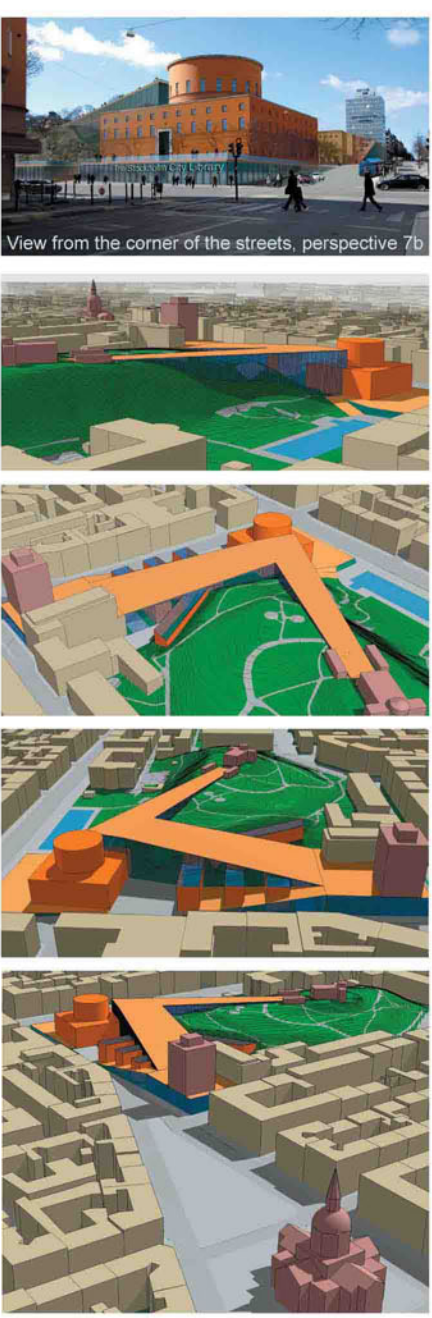


Site map 1/1000



View from the corner of the streets, perspective 7b

The form
 Imagine a terra cota carpet: An artificial extension of the hill a kind of lava flow from the Observatory. Roll out the red carpet between the street (the city) and the hill (the nature), between the 'temple of the book' and the temple of the stars' the observatory. See the roof like a urban offering, like an extraordinary public ground for a holistic project, an architecture of connection, a means to link visually and physically the different and conflicting buildings. Imagine these hilly structure practicable for pedestrians but also for skate, roller, cycle and sledges. The temple of the book is dedicated to Literature (fiction): the south wing always for Children's and Young people because of these telling rooms and the ornaments on the facade; the north wing for the nordic fiction and the earth of the temple, in front of the restaurant and the square, would become a prestigious bookshop. At the upper level the originals offices would be transformed in quiet study rooms in complement to the common study area on the mezzanine. The fondamentale transformation would be to cover the four inside yards by glass roofs in the aim to discovered again their function and their simplicity but at the same time to put some elegant and transparent lifts and elevators for public and media.

- The annexes
 The annexes is thinking before all like open stacks with quiet specific reading rooms for each subject in these own atmosphere. Each annex would be link to each other by a mezzanine that

Imagine a waterfall of glass:
 A curtain glass who falls from the roof, perhaps to go to the pool? A transparent enclosure to protect the reader of climatic variations, but to permit to live with them, snow, rain, fog, sun. Just for a piece of the hill to read, to work and to dream. It would be very transparent to see, from the streets, the hill

The functional principles
 - 'Temple of books' The Asplund building would be restored to its original condition as far as possible. The temple of the book is dedicated to Literature (fiction): the south wing always for Children's and Young people because of these telling rooms and the ornaments on the facade; the north wing for the nordic fiction and the earth of the temple, in front of the restaurant and the square, would become a prestigious bookshop. At the upper level the originals offices would be transformed in quiet study rooms in complement to the common study area on the mezzanine. The fondamentale transformation would be to cover the four inside yards by glass roofs in the aim to discovered again their function and their simplicity but at the same time to put some elegant and transparent lifts and elevators for public and media.

The trees and the sky:
 In the hall entrance, the hill would be virgin, like a glass house with grass and plants, we could read the papers on the slope with their steps. See the auditorium who use the ground, like antic theater.

The functional principles
 - 'Temple of books' The Asplund building would be restored to its original condition as far as possible. The temple of the book is dedicated to Literature (fiction): the south wing always for Children's and Young people because of these telling rooms and the ornaments on the facade; the north wing for the nordic fiction and the earth of the temple, in front of the restaurant and the square, would become a prestigious bookshop. At the upper level the originals offices would be transformed in quiet study rooms in complement to the common study area on the mezzanine. The fondamentale transformation would be to cover the four inside yards by glass roofs in the aim to discovered again their function and their simplicity but at the same time to put some elegant and transparent lifts and elevators for public and media.

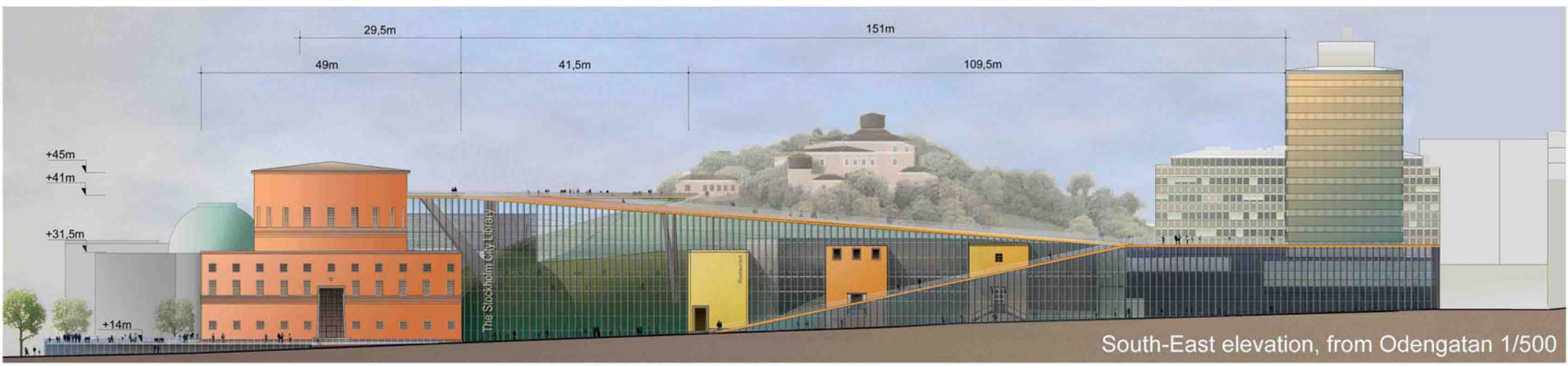
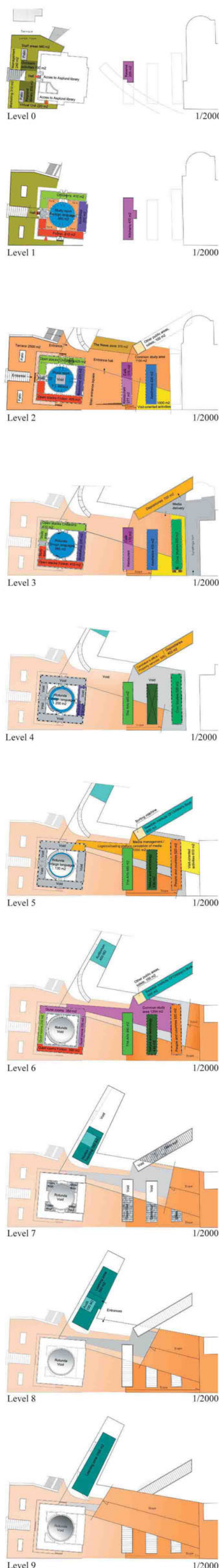
- The mezzanines
 The upper one is reserved for the public like a meeting area for different subjects. The other one is for employees and media circulation, it would receive the media management platform. Each one would connect the different buildings, news and existings one.

- The 'bazaar'
 The administration would be on the street ground linked to the Asplund building. The staff area open to the parc and the pool. Some offices are light with two patios. The roof is the huge terrace linked with the hall and the square entrance. The material is the same that the slope practicable roof.

- The public area, a 'glass house'
 The entrance hall that play with the hill, the slope and the plants, like a glass house, it would be a generous meeting zone. It would offer to the visitor a huge volume of 30 meters high, where there are a café, a multipurpose hall premises for exhibitions, a relaxation and discussion zone, a zone with informations about library, and the News area on a lade out slope.

Public area
 Open light space: 1500 3000
 The News zone: 370 900
 Common public areas: (new building): 2200 2200
 The learning zone: 1500 1800
 The Asplund building: 2450 2950
 Teaching: 1500 1800
 The Asplund building: 200 800
 Children's Fiction and Young People: 4995 5525
 Children's Fiction and Young People: 1242 1630
 Foreign Languages: 1500 1800
 Bookshop: 855 1000
 Annexes (1, 2 and 3): 10,885 11,845
 Office: 650 1100
 The arts: 1335 1480
 Administration: 880 980
 Nature and technology: 880 980
 Civic Studies: 1070 1165
 People and countries: 1070 1165
 Common study area: 2770 3000
 Visit-oriented activities/offices: 1610 1700
 New building (annexe 4) + mezza: 4050 4310
 Nature and technology: 100 100
 Sculpture machine: 100 100
 Logistics/stacking platform: 500 600
 Exhibition: 500 600
 The Swedish Institute of Children's books: 1200 1300
 Administration and staff (bazaar): 2140 2250
 Marketing: 310
 Visual: 150
 Outreach activities: 150
 Regional library: 150
 Staff area: 640

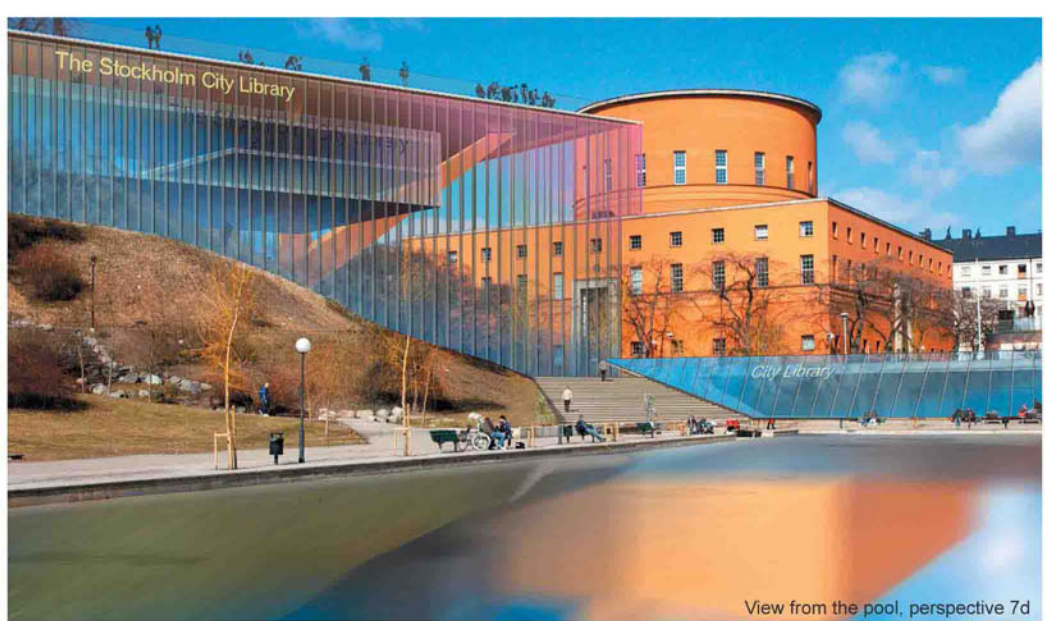
	MUA	Gross area
Public area	1500	3000
Open light space	1500	3000
The News zone	370	900
Common public areas: (new building)	2200	2200
The learning zone	1500	1800
The Asplund building	2450	2950
Teaching	1500	1800
The Asplund building	200	800
Children's Fiction and Young People	4995	5525
Children's Fiction and Young People	1242	1630
Foreign Languages	1500	1800
Bookshop	855	1000
Annexes (1, 2 and 3)	10,885	11,845
Office	650	1100
The arts	1335	1480
Administration	880	980
Nature and technology	880	980
Civic Studies	1070	1165
People and countries	1070	1165
Common study area	2770	3000
Visit-oriented activities/offices	1610	1700
New building (annexe 4) + mezza	4050	4310
Nature and technology	100	100
Sculpture machine	100	100
Logistics/stacking platform	500	600
Exhibition	500	600
The Swedish Institute of Children's books	1200	1300
Administration and staff (bazaar)	2140	2250
Marketing	310	
Visual	150	
Outreach activities	150	
Regional library	150	
Staff area	640	
Total	26,070	30,480



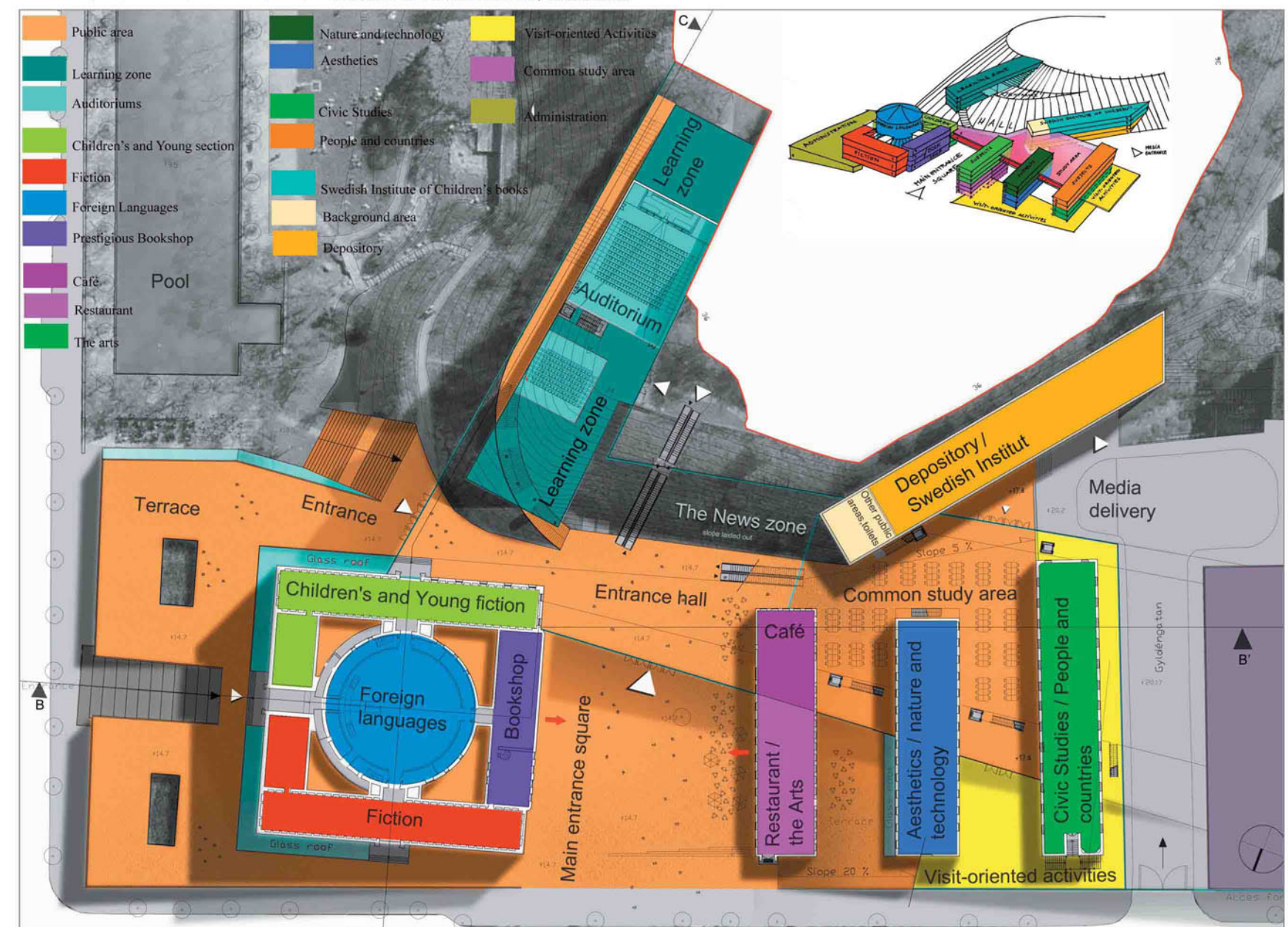
South-East elevation, from Odengatan 1/500



Aerial view 7a



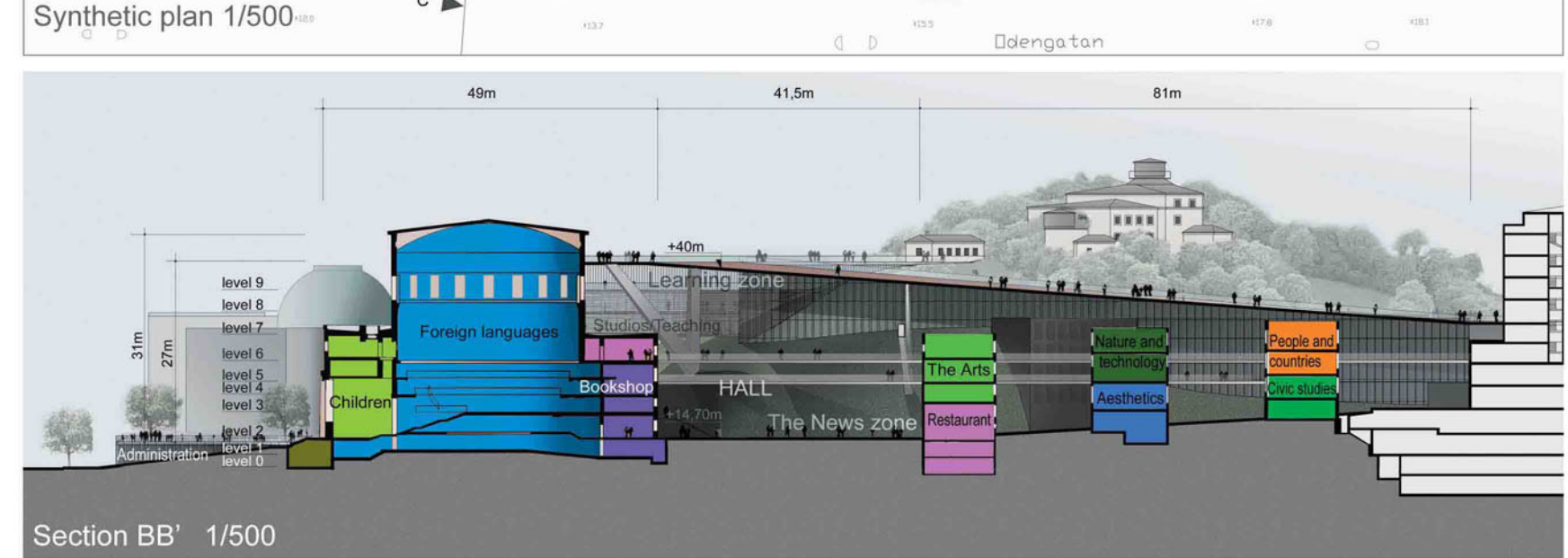
View from the pool, perspective 7d



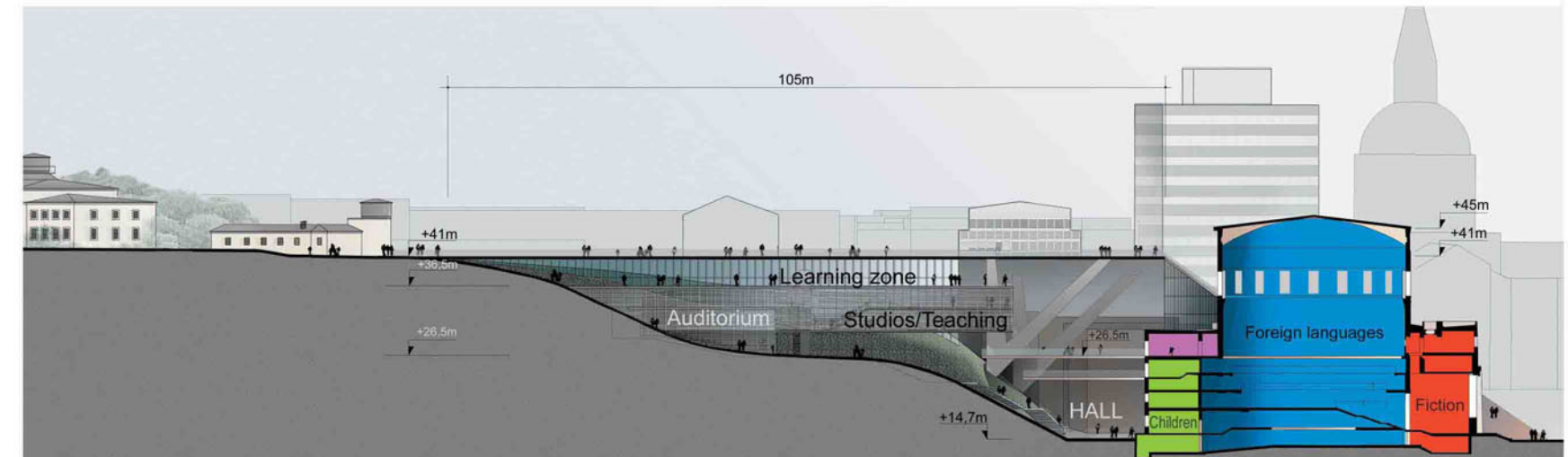
Synthetic plan 1/500



West elevation, from Sveavägen 1/500



Section BB' 1/500



Section AA' 1/500