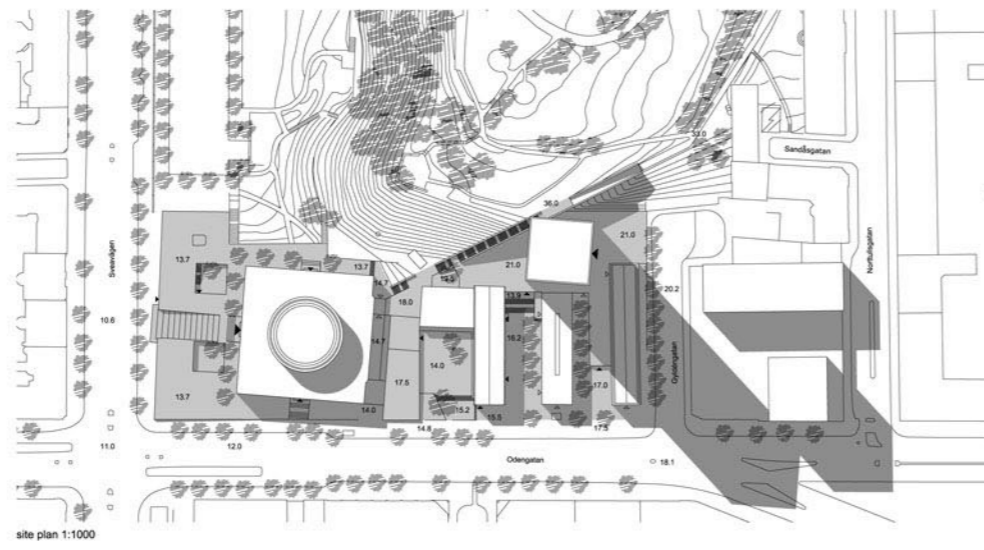


- PUBLIC AREAS**
- The News Zone
MUA: 315 sqm
Location: Asplund Building (lev. 2)
 - The Learning Zone
MUA: 1700 sqm
Location: Annex 1 (lev. 4, 5, 6, 7)
 - Studios and Teaching
MUA: 400 sqm
Location: Tower Basement (new building between Asplund build. and Annex 1)
 - Lecture Halls/ Auditoriums
MUA: 500 sqm
Location: Annex 1 (lev. 4), Tower Basement
 - Entrances, other public areas, toilets...
MUA: 2600sqm
Location: Asplund Building - Tower - Tower Basement -Annexes

- Subject areas/open media collections**
- Fiction
MUA: 1534 sqm (Includes 70 sqm for Young People)
Location: Tower (lev. 1, 2, 3, 6, 7, 8)
 - Children's Fiction
MUA: 967 sqm
Location: Asplund Building (lev. 2), Bazaar Extension
 - Foreign Languages
MUA: 2000 sqm (Includes 70 sqm for Young People)
Location: Asplund Building (lev.3, 4)
 - The Arts
MUA: 1900 sqm (Includes 70 sqm for Young People)
Location: Tower (lev. 27, 28, 29, 30, 31, 32)
 - Aesthetics
MUA: 900 sqm (Includes 70 sqm for Young People)
Location: Tower (lev. 9, 10, 11, 12)
 - Civic Studies
MUA: 1900 sqm (Includes 70 sqm for Young People)
Location: Tower (lev. 33, 34, 35, 36, 37, 38)
 - Nature and Technologies
MUA: 1620 sqm (Includes 70 sqm for Young People)
Location: Tower (lev. 13, 14, 15, 16, 17)
 - People and Countries
MUA: 1905 sqm (Includes 70 sqm for Young People)
Location: Tower (lev. 19, 20, 21, 22, 23, 24)
 - Visit-oriented Activities/ Offices
MUA: 1436 sqm
Location: Tower (lev. 9, 13, 18, 26, 27, 33), Asplund building (lev. 2, 6)
 - Café
MUA: 420 sqm
Location: Tower (lev. 25)
 - Restaurant and Bookshop
MUA: 1100 sqm
Location: Bazaar

- DEPOSITORY MEDIA MANAGEMENT**
- Depositories
MUA: 1000 sqm
Location: Annex 1 (lev. 2, 3)
 - Sorting Machines
MUA: 170 sqm
Location: Tower Basement
 - Media Management
MUA: 850 sqm
Location: Tower Basement
 - Logistic/ Loading Platform
MUA: 200 sqm
Location: Tower Basement (New Building between Annex 2 and 3)
 - Caretaker's Office and Property Services
MUA: 500 sqm
Location: Annex 3 (lev. 1)

- ADMINISTRATION AND STAFF**
- Management
MUA: 213 sqm
Location: Asplund Building (lev. 2)
 - Marketing
MUA: 303 sqm
Location: Asplund Building (lev. 6)
 - Virtual Unit
MUA: 200 sqm
Location: Asplund Building (lev. 6)
 - Outreach Activities
MUA: 105 sqm
Location: Annex 3 (lev. 2)
 - Regional Library
MUA: 351 sqm
Location: Annex 3 (lev. 2)
 - Staff Areas
MUA: 940 sqm
Location: Annex 3 (lev. 3, 4)
 - Swedish Institute of Children's Books
MUA: 1500 sqm
Location: Annex 2 (lev1)
 - Basements
CA: 2500 sqm
Location: Asplund Building (lev. 1), Annex 1 (lev1), Annex 2 (lev1)
- MUA TOT: 25740 sqm
GROSS AREA TOT: 30664 sqm



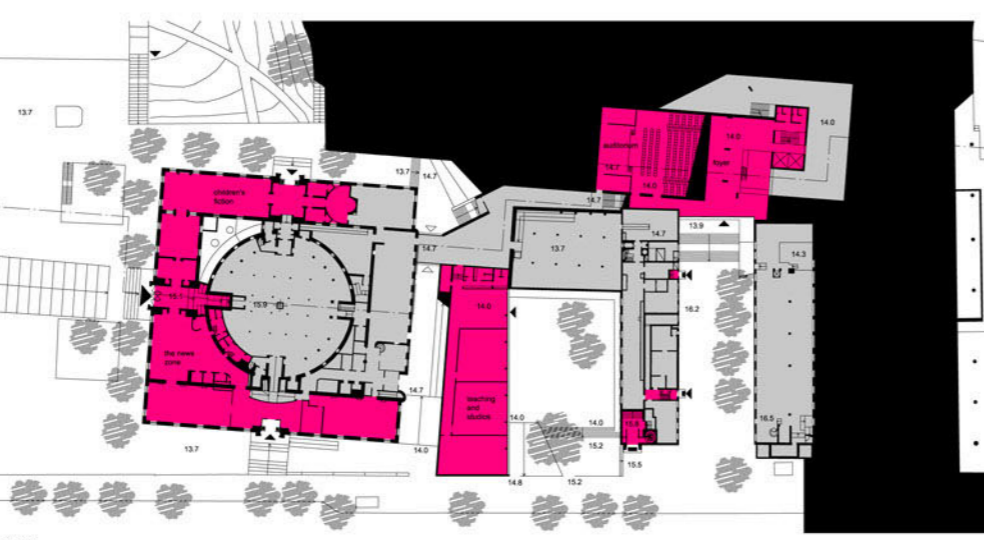
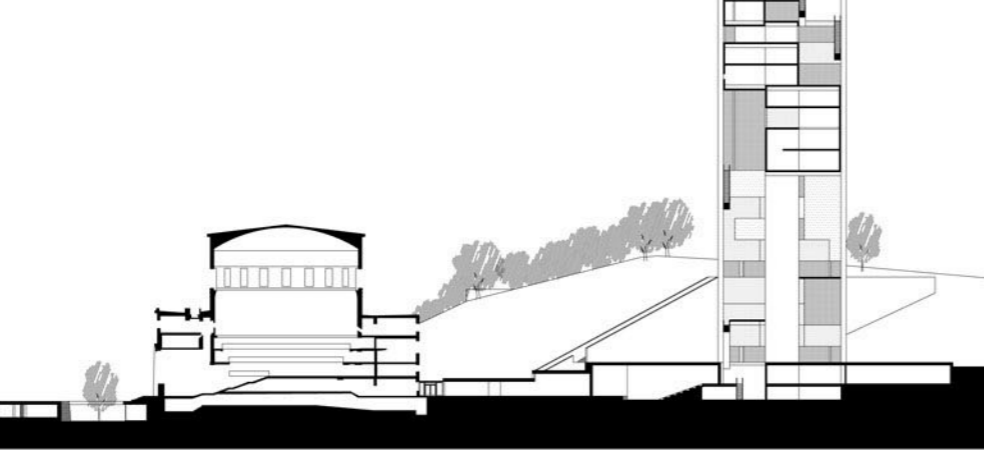
The project works on the redefinition of the rectangular block on which the complex of the Public Library stands, in order to create a unifying base for the existing buildings and the new one.

The idea is based on the contrast between a flat, low-rising, almost entirely excavated and hidden element (the base itself) and a high-rising element (the library extension tower).

The basement element sneaks through the space in between the Asplund Building and the Annexes, leaving the latter completely unaltered, creates new possibilities in living the open-outside public areas and represents the functional core of the Library, connecting the buildings to each other.

The tower element contains six out of the eight subject areas/open media collection of the library and becomes a new symbol for culture and the city itself. The tower is conceived as a basically transparent curtain wall covering in which the subject areas are organized in a free configuration of autonomous volumes with connecting voids in between them, where internal terraces find room to be lived as extra public spaces (café, exposition, visit-oriented activities...) or simply as places for reading or meeting people outside of the single section, but still inside of the building. It is possible to pass through these voids, almost suspended by means of the escalators that connect the different levels.

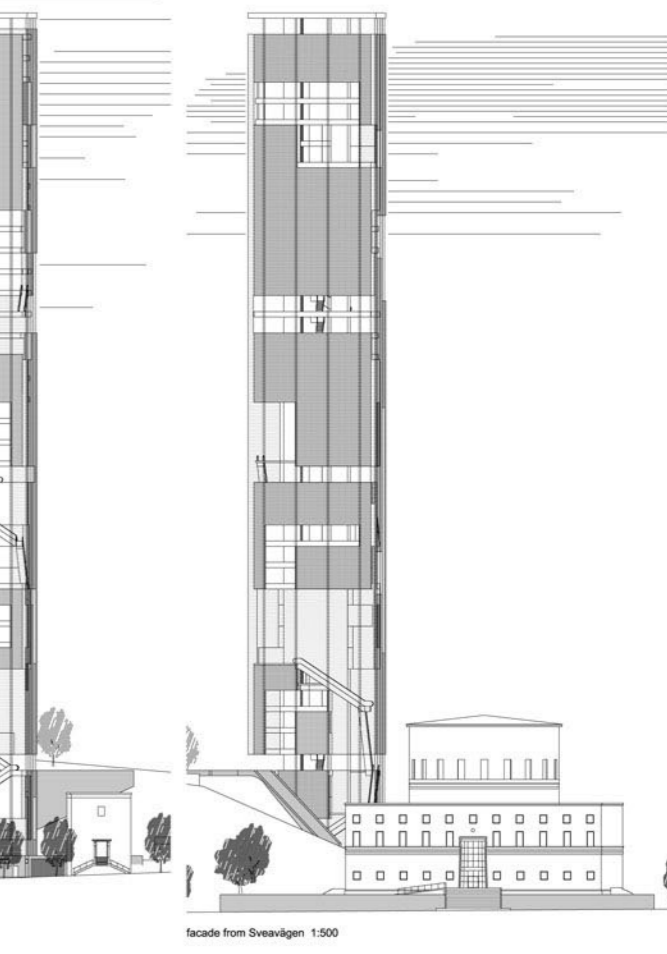
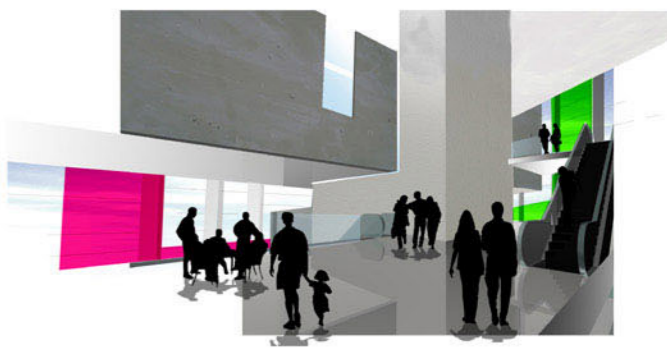
Another important issue of the project is how it relates to the Observatory Hill. The cut operated to the hill to give room for the new construction takes form in a supporting wall and staircase that connect the library complex directly to the hill park, either from the inside or from the outside of the library buildings. The stair becomes a landscape element that works as a boundary but can also establish a new and more easy accessibility to the seldom attended space of the hill.



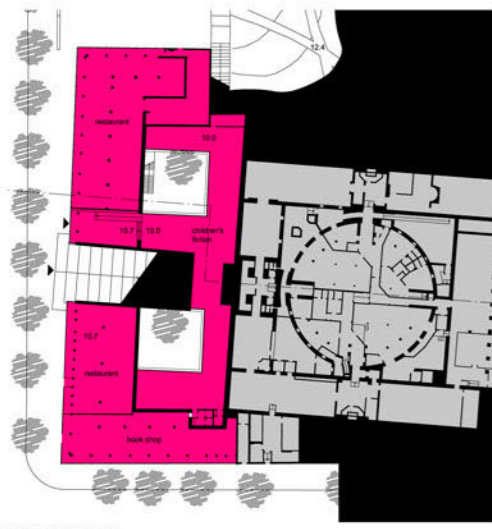
section 1:500
plan level -02 1:500



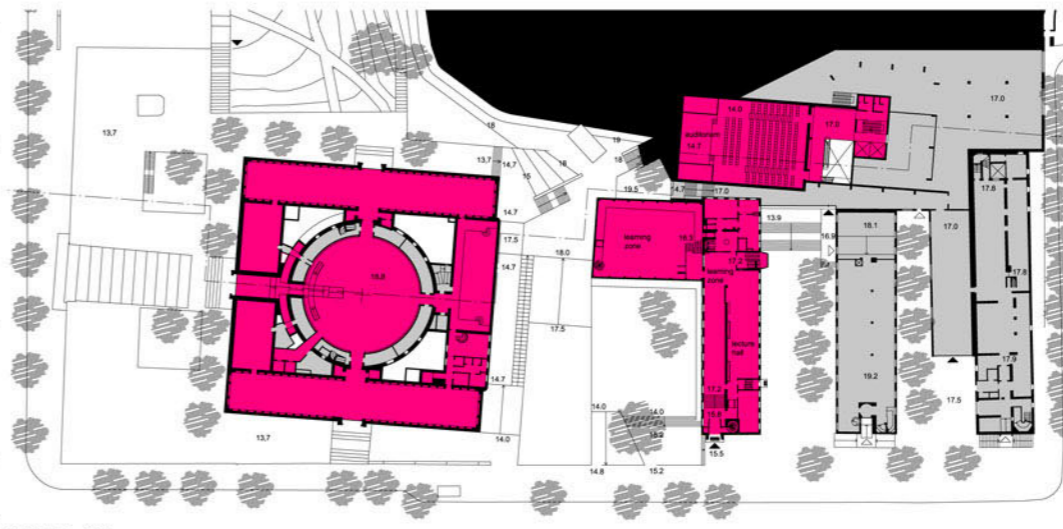
plans level 0-39 1:500
facade from Odengatan 1:500



facade from Sveavägen 1:500



plan level -03 1:500



plan level -01 1:500

