

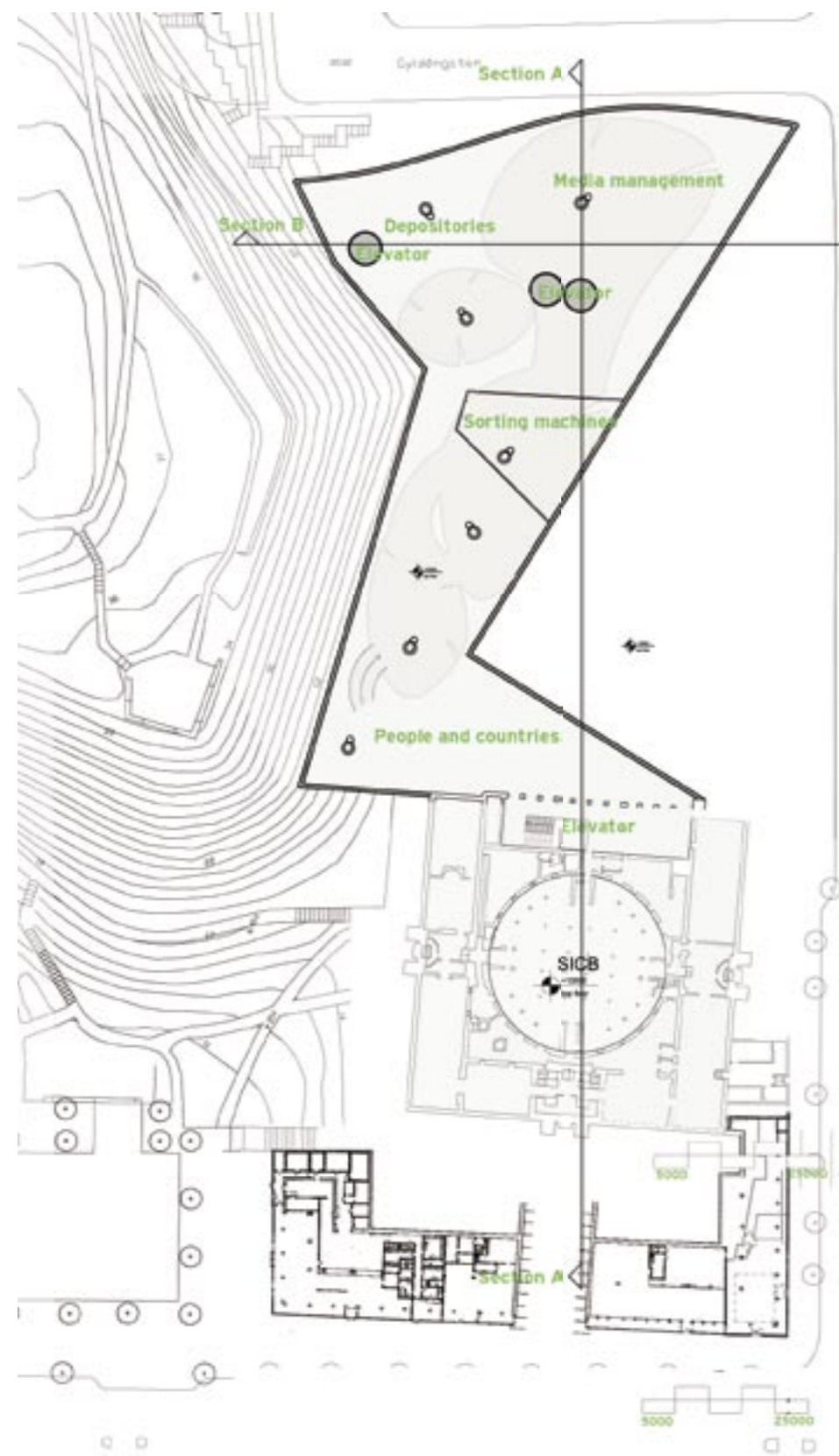
The new library should be a new icon for Stockholm. A landmark that puts Stockholm on the map of contemporary architecture. In addition to this, it should be a restrained building paying respect to the existing monumental Asplund library. In the attempt to realize both ambitions lies the true challenge of this project.

Our inspiration for the positioning of the library comes from the urban setting. The new development around Odengatan and the metro station with its triangular square will generate a lot of the public to the library.

By creating a similar triangular open space in front of the library the building retracts itself from the street and allows a full view onto the existing library. For the first time the Asplund building becomes an all sided jewel at the corner of the intersection Sveavagen and Odengatan.



VIEW FROM ODENGATAN



BASEMENT



GROUND FLOOR



MUA = 24000 m²

FIRST FLOOR



GROSS AREA = 30000 m²

SITEPLAN

The building itself is a zigzag made of printed glass. Its horizontal base covers the present plinth of the Asplund library and is extended towards the triangular library square. The vertical plane forms the front façade of the new library, mainly a large showcase showing the spacious interior of the proposal. The upper horizontal plane forms the roof and is extended towards the Observatory Hill. Thus becoming an integrated part of the new library's interior.

This gradual merging of building and nature provides visitors easy access from the library to the park and is strengthened by the tree print on the glass. Its trunk begins at the plinth level of the existing library while its branches work themselves up the façade and onto the roof, reaching for the park.

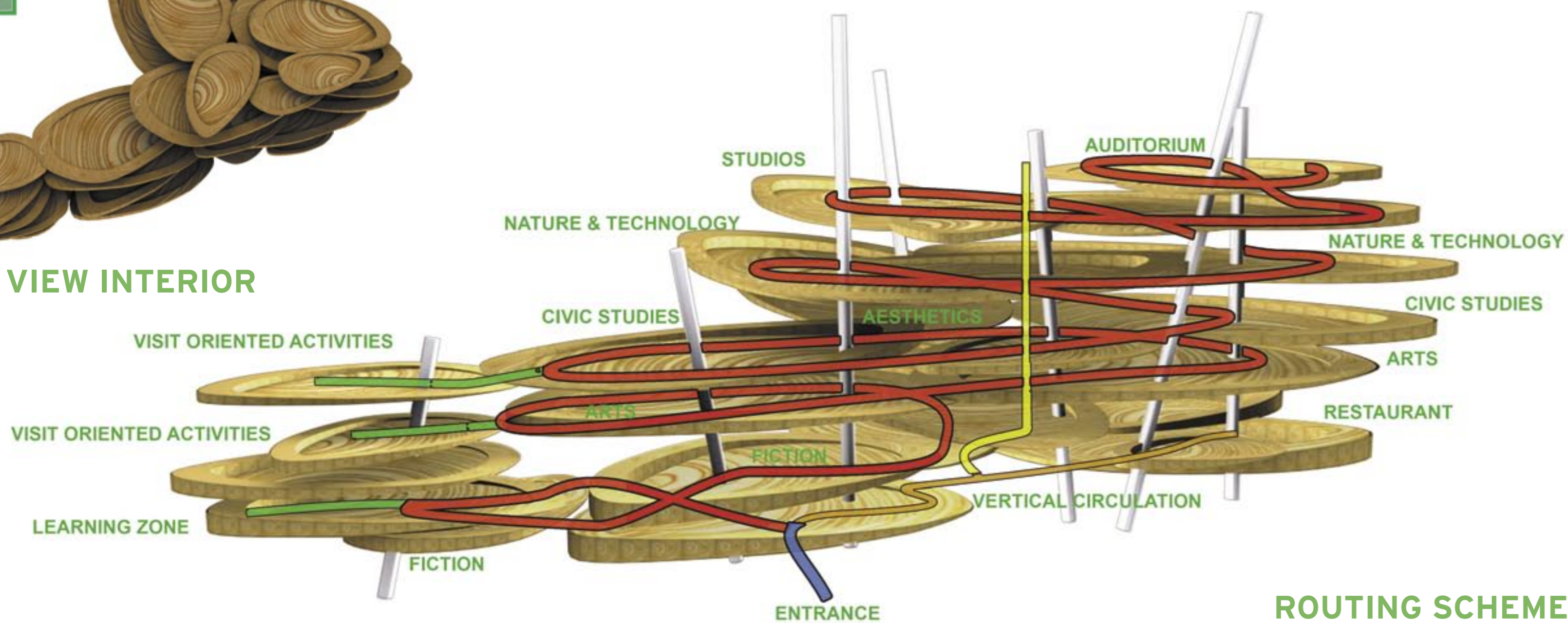


MOUNTED AERIAL PHOTOGRAPH

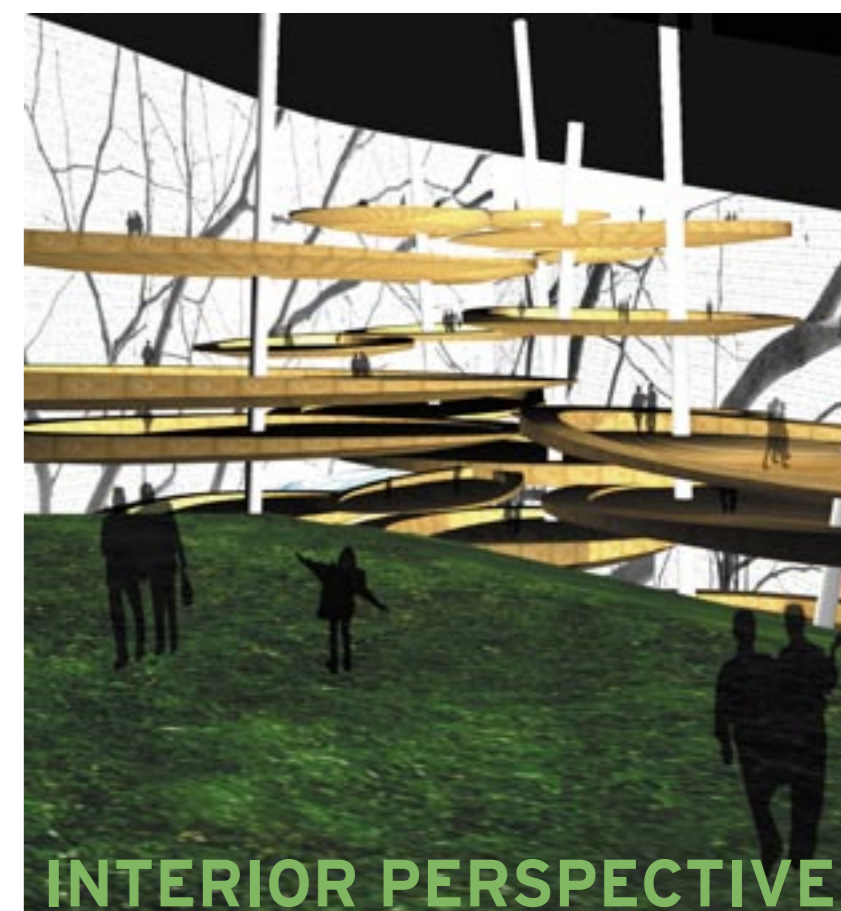
59° N 12° E



TOP VIEW INTERIOR



ROUTING SCHEME

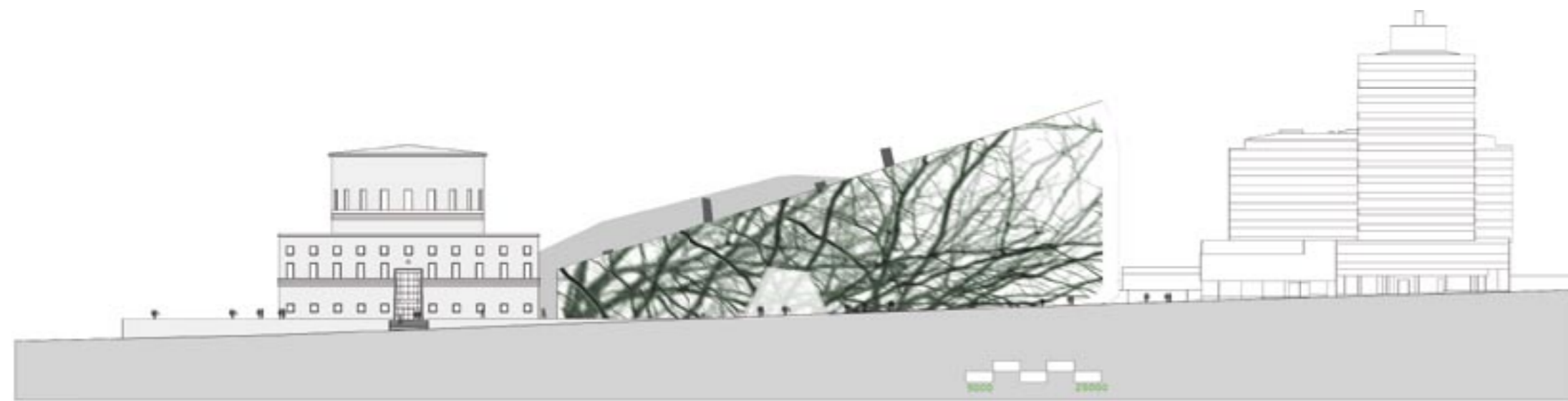


INTERIOR PERSPECTIVE

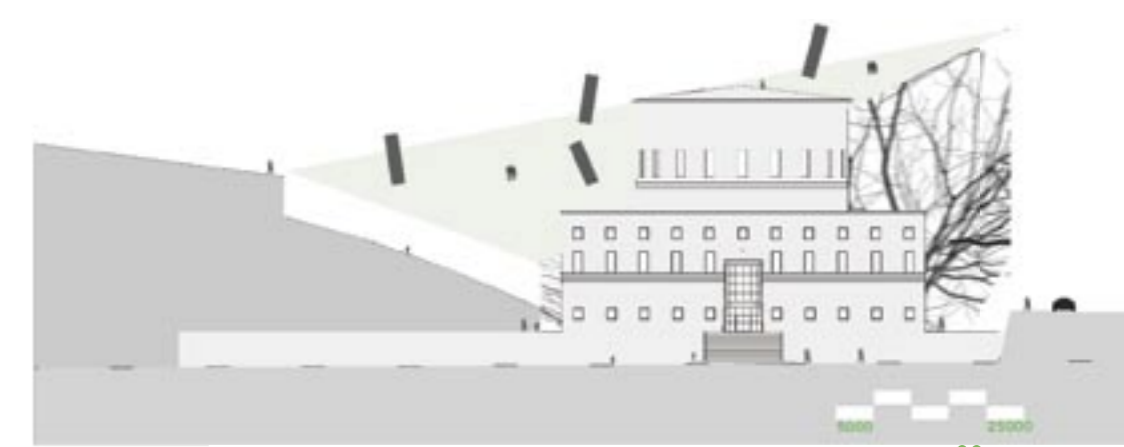


INTERIOR PERSPECTIVE

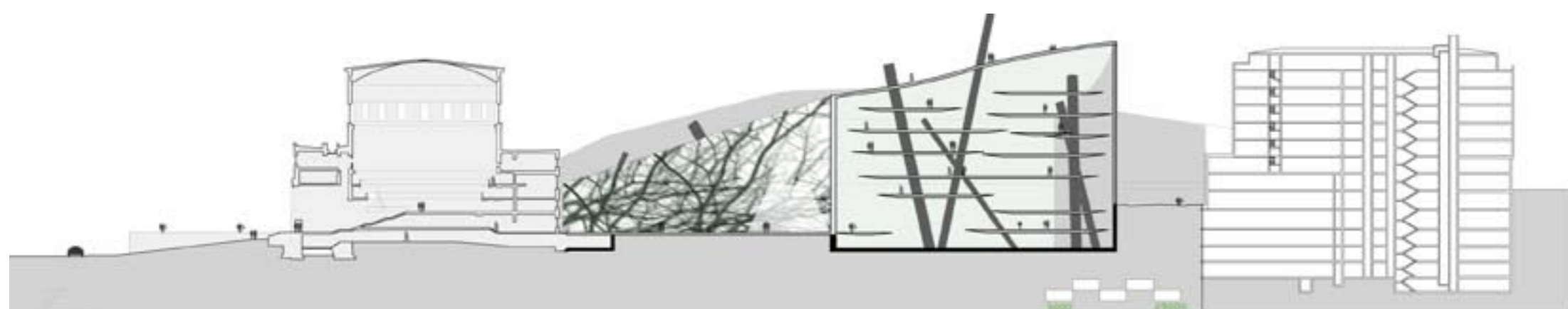
The set up of the library is based on the contemporary vision that a library now and in the future is a continuous open space with information of all sorts, where people meet each other. Therefore our proposal consists of a three dimensional information hall where the different floors are placed as a continuous route throughout. The inspiration for the shape of the floor was found in an icon of the Swedish landscape: the birch tree. Therefore, each floor is conceived as an abstract tree leaf containing different areas and functions of the library. The cladding used is wood. The intention is to evoke images of the vernacular "Swedish Blonde" interiors but with a contemporary twist.



FACADE FROM ODENGATAN



FACADE FROM SVEAVÄGEN



SECTION A



SECTION B

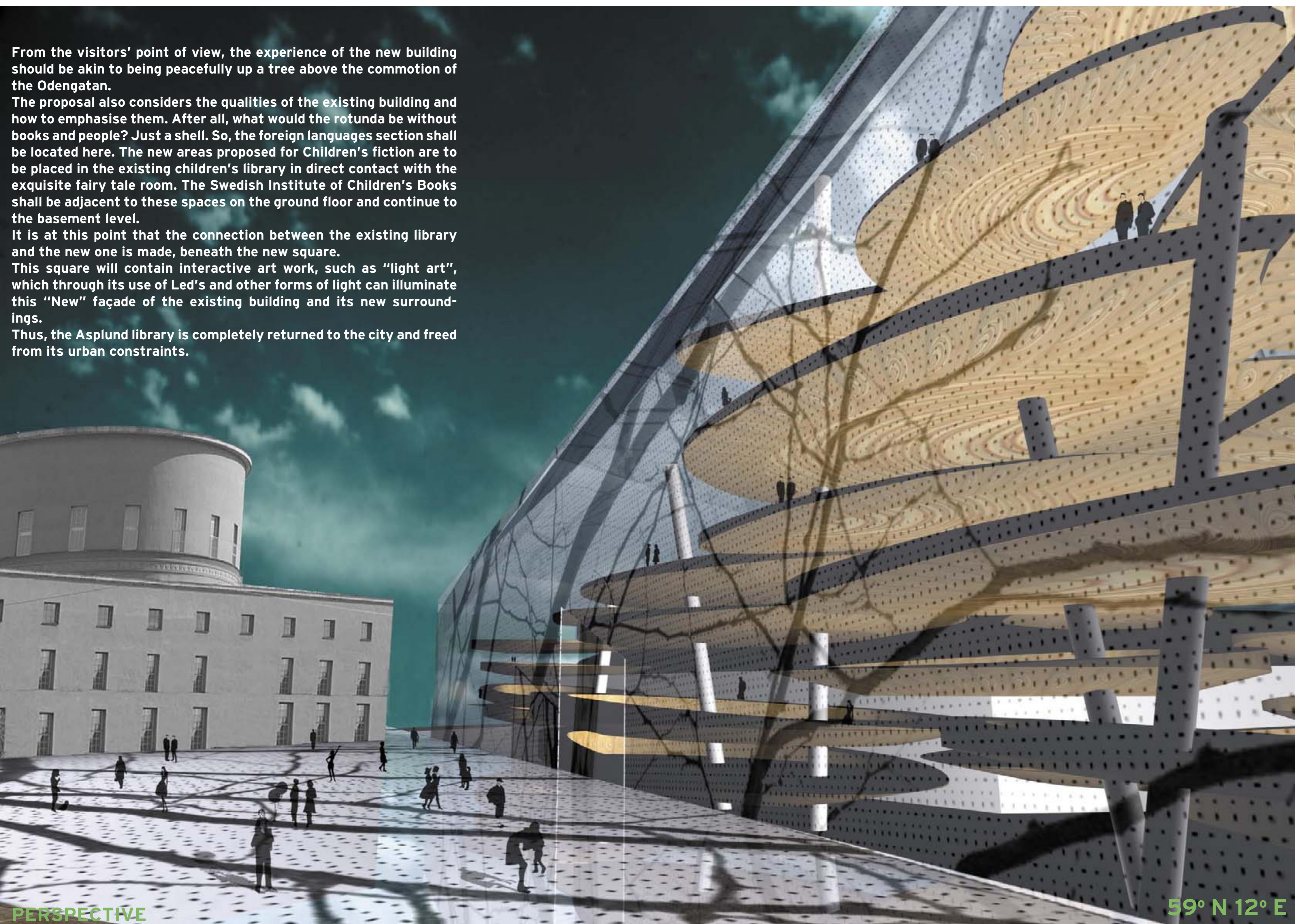
From the visitors' point of view, the experience of the new building should be akin to being peacefully up a tree above the commotion of the Odengatan.

The proposal also considers the qualities of the existing building and how to emphasise them. After all, what would the rotunda be without books and people? Just a shell. So, the foreign languages section shall be located here. The new areas proposed for Children's fiction are to be placed in the existing children's library in direct contact with the exquisite fairy tale room. The Swedish Institute of Children's Books shall be adjacent to these spaces on the ground floor and continue to the basement level.

It is at this point that the connection between the existing library and the new one is made, beneath the new square.

This square will contain interactive art work, such as "light art", which through its use of Led's and other forms of light can illuminate this "New" façade of the existing building and its new surroundings.

Thus, the Asplund library is completely returned to the city and freed from its urban constraints.



PERSPECTIVE

59° N 12° E