

The new annex building of the Asplund Library occupies part of the competition site. To create the required area, as stipulated in the Competition Brief, the Project involves ground excavation within the borders of the annex building up to the mark +12.500 (+/- 0.000)

The design integrates four main principles:

Principle 1. Terraced structure of the new annex building.
The design ensures solicitous positioning of the annex building in relation to the present situation and creates the required comfortable environment for visitors, including functional space zoning, orientation in the library space, natural lighting of the work stations, as well as convenient positioning of the loading system that serves all the reading halls of the Library.

Principle 2. Introduction of pathways for passers-by (an "inner street").
Pathways for passers-by go through the new annex building and connect Sveavägen with the designed trade center in the Fölkam property and the exit from the underground station. This "inner street" will attract the attention of passers-by who would eventually become the Library's potential visitors.

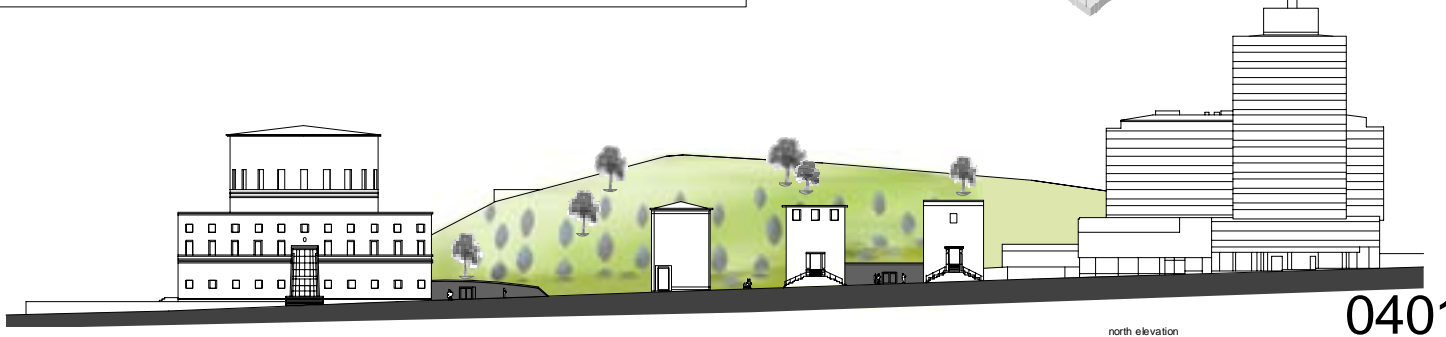
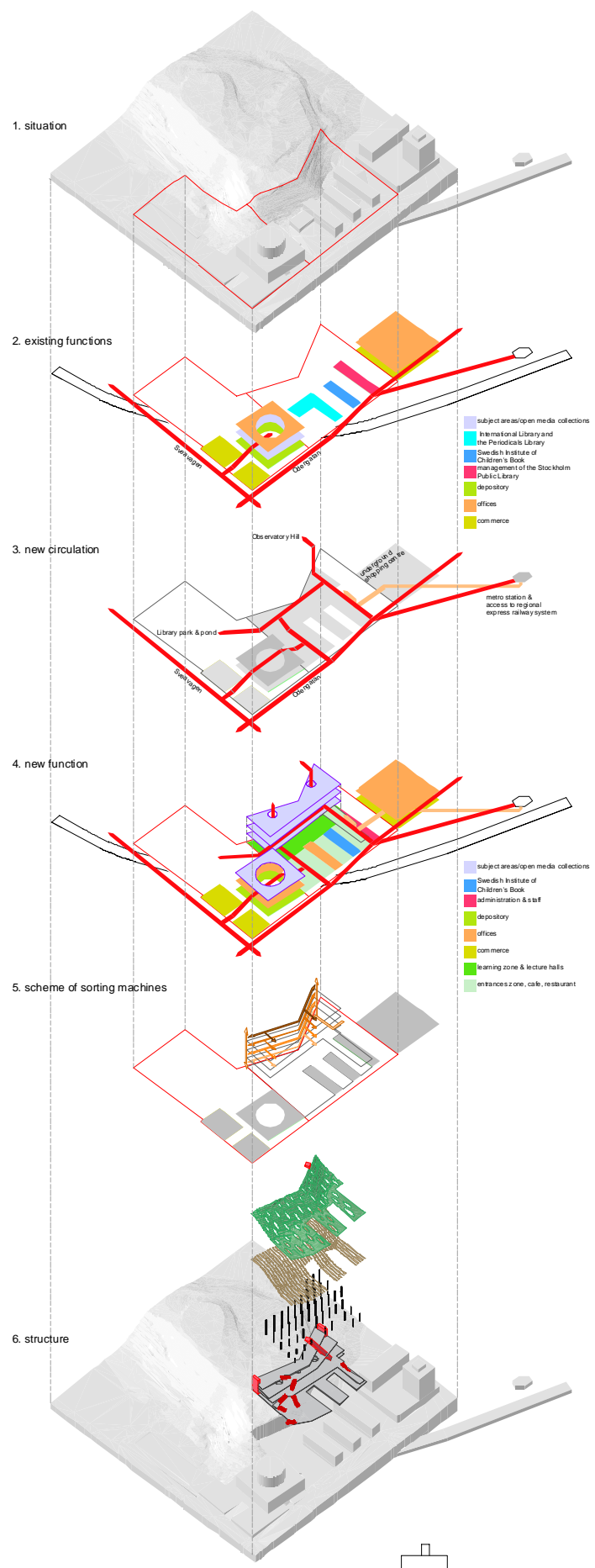
Principle 3. New annex building as an imitation of the existing Hill.
One of the main priorities of the Project is to preserve as much as possible the existing development and the landscape quality that are of historic value for Stockholm. Hence, the designed covering of the new annex building, pierced with light openings, continues the existing Hill.

Principle 4. Connection of the Asplund Library with the new annex building.
To ensure full-scale functioning of the Asplund Library together with the new annex building, the Project introduces an escalator connecting the main "reading" hall of the Asplund Library with the entrance area of the new annex building. The new annex building also unites, both compositionally and functionally, the three existing annex buildings, and establishes a holistic library complex. At the same time, the Project provides a connection with the top of the hill by means of a funicular lift, also used for vertical connection of the library terraces.

The "inner street" axis organizes the functional scheme into two large zones, the first including open-shelf reading halls and the second - public areas, i.e. a cafe, a restaurant, and entrance areas; as well as the administration, offices, and the Swedish Institute of Children's Books. This provides for their simultaneous existence and creates a comfortable environment for readers. A flexible loading system enables easy transformations of the terraces' space.

On the whole, the Project aims to provide for a convenient and comfortable location of the library function, pedestrian flows circulation, and learning and teaching zones.

Main usable area of new annex - 10 000 m²



04010

