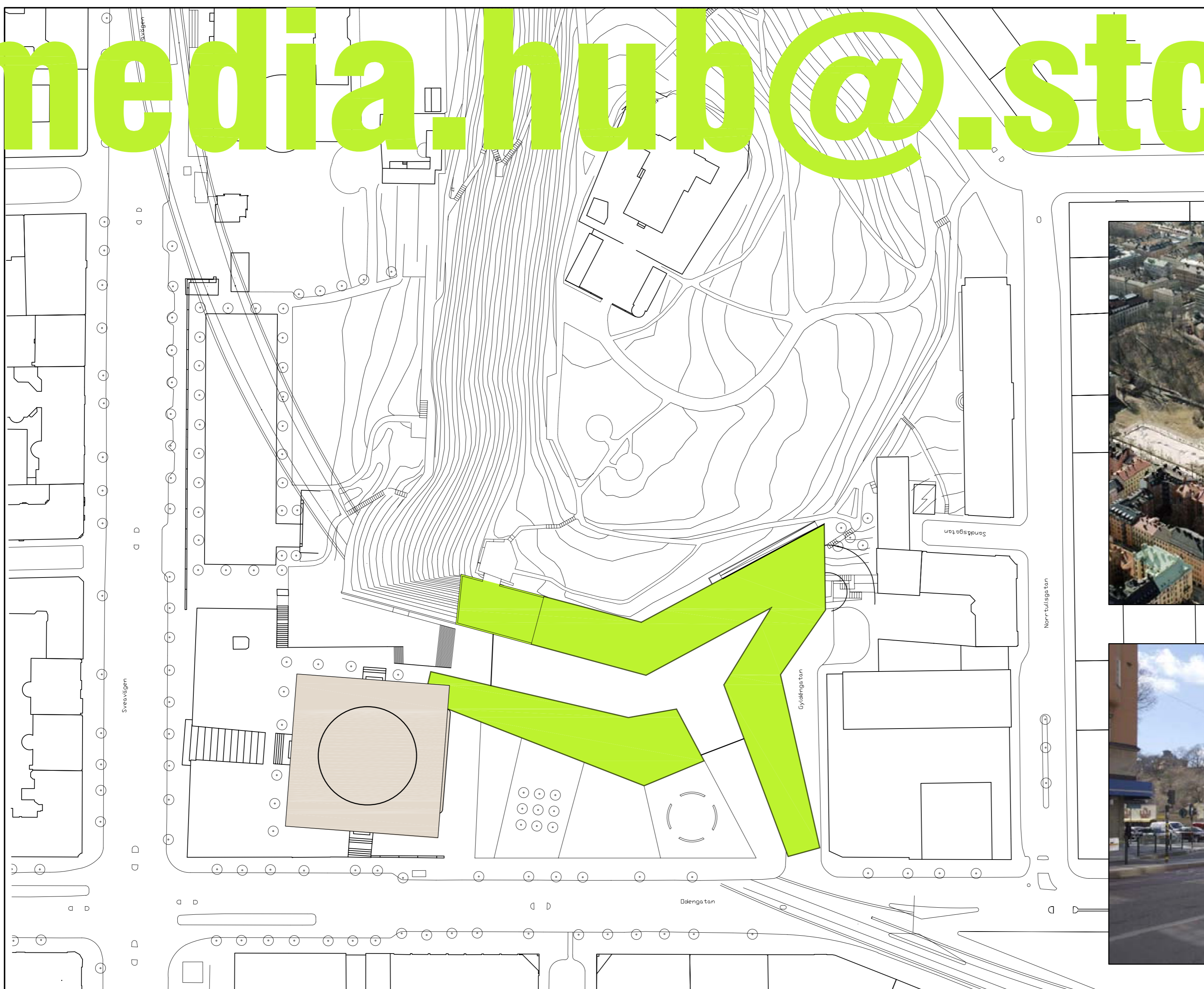
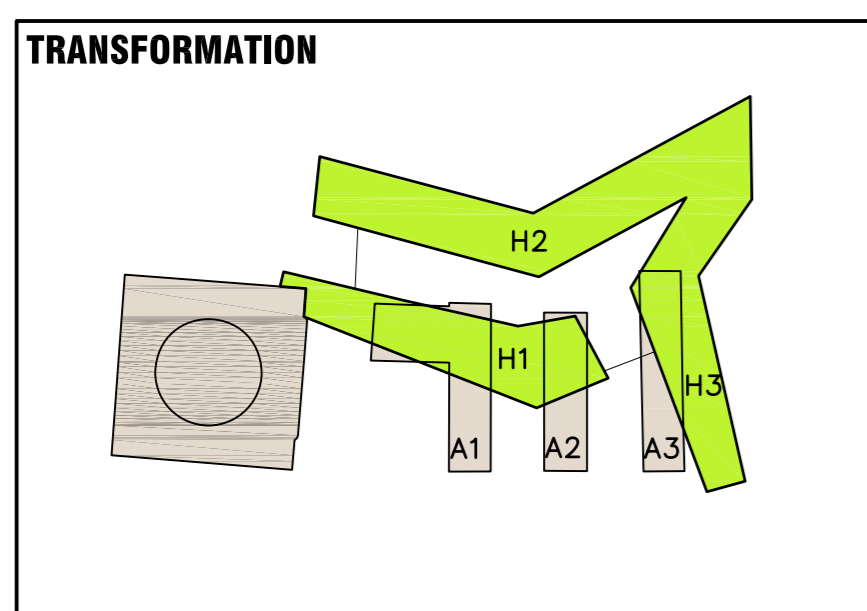


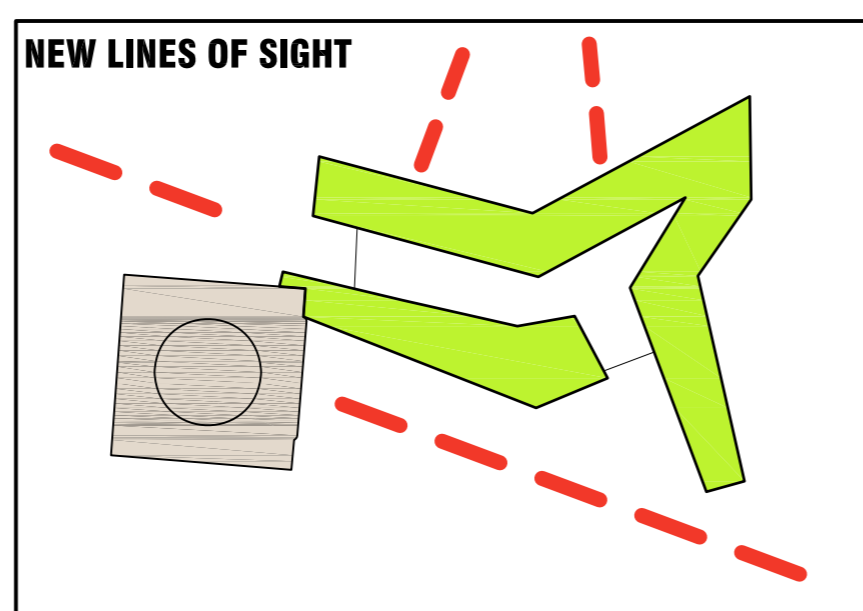
media.hub@.stckhlm



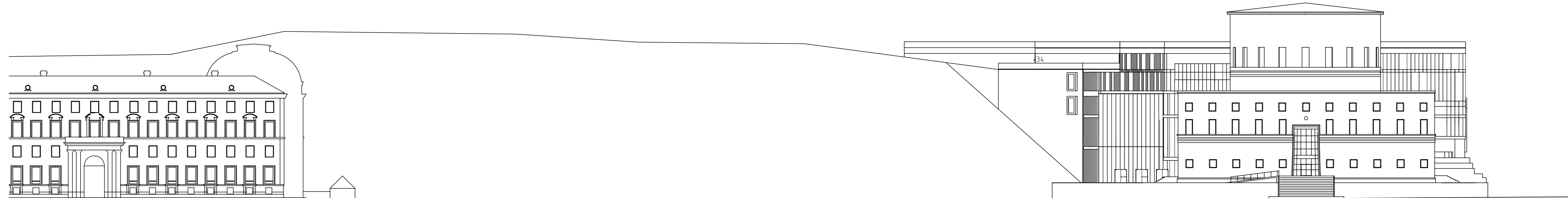
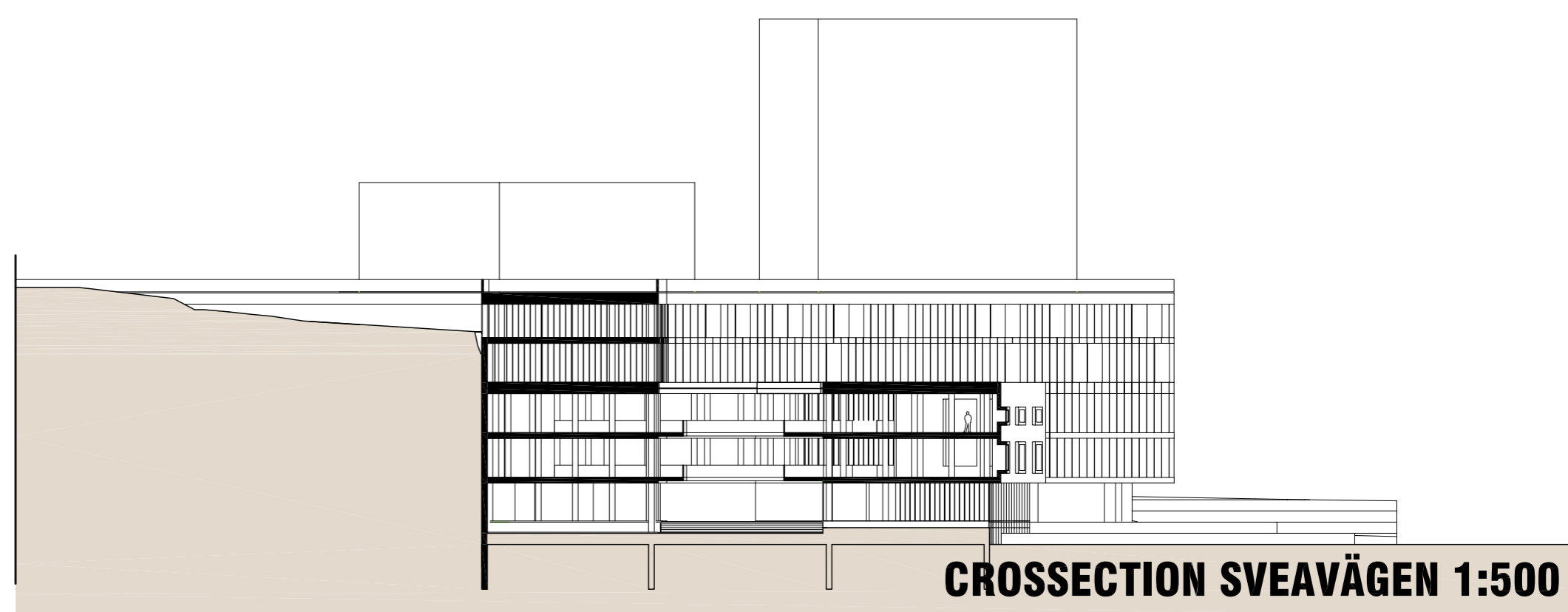
" THE MAIN IDEA OF THE PROJECT IS TO CREATE A MULTI-CONNECTION-SPACE : A HUB, BETWEEN THE OLD ASPLUND BUILDING AND THE OBSERVATORY HILL AND PARK, THE UNDERGROUND , THE SURROUNDING CITI AND ITS PEOPLE, THE NEW MEDIA AND THE VIRTUAL WORLD " .



ANNEXES 1-2-3 ARE TRANSFORMED IN TO HUB WINGS H1-H2-H3

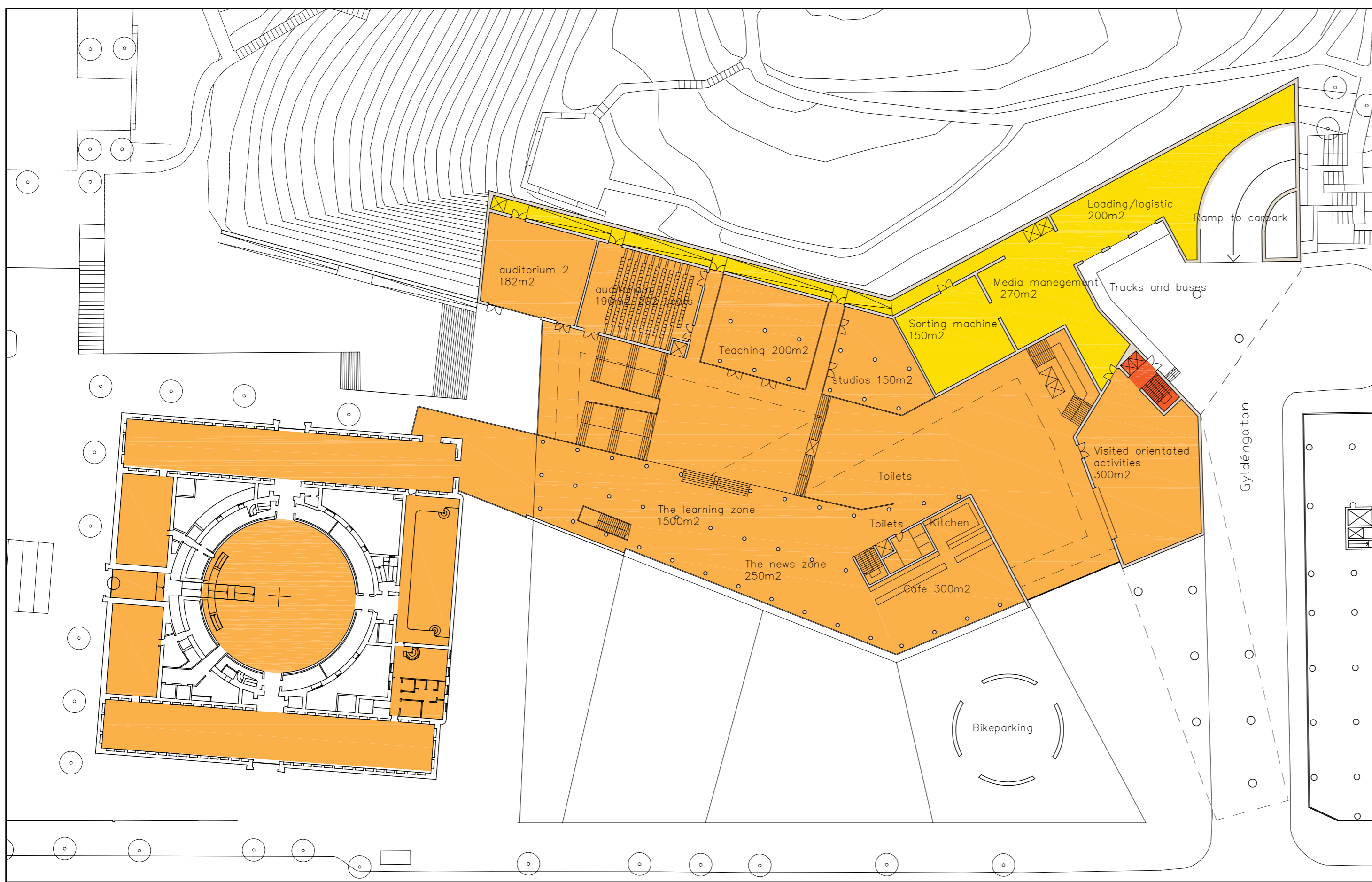


BETWEEN THE ASPLUND LIBRARY AND THE GUSTAV VASA CHURCH
BETWEEN THE OBSERVATORY PARK AND THE MEDIA HUB
BETWEEN THE POND AND THE MEDIA HUB

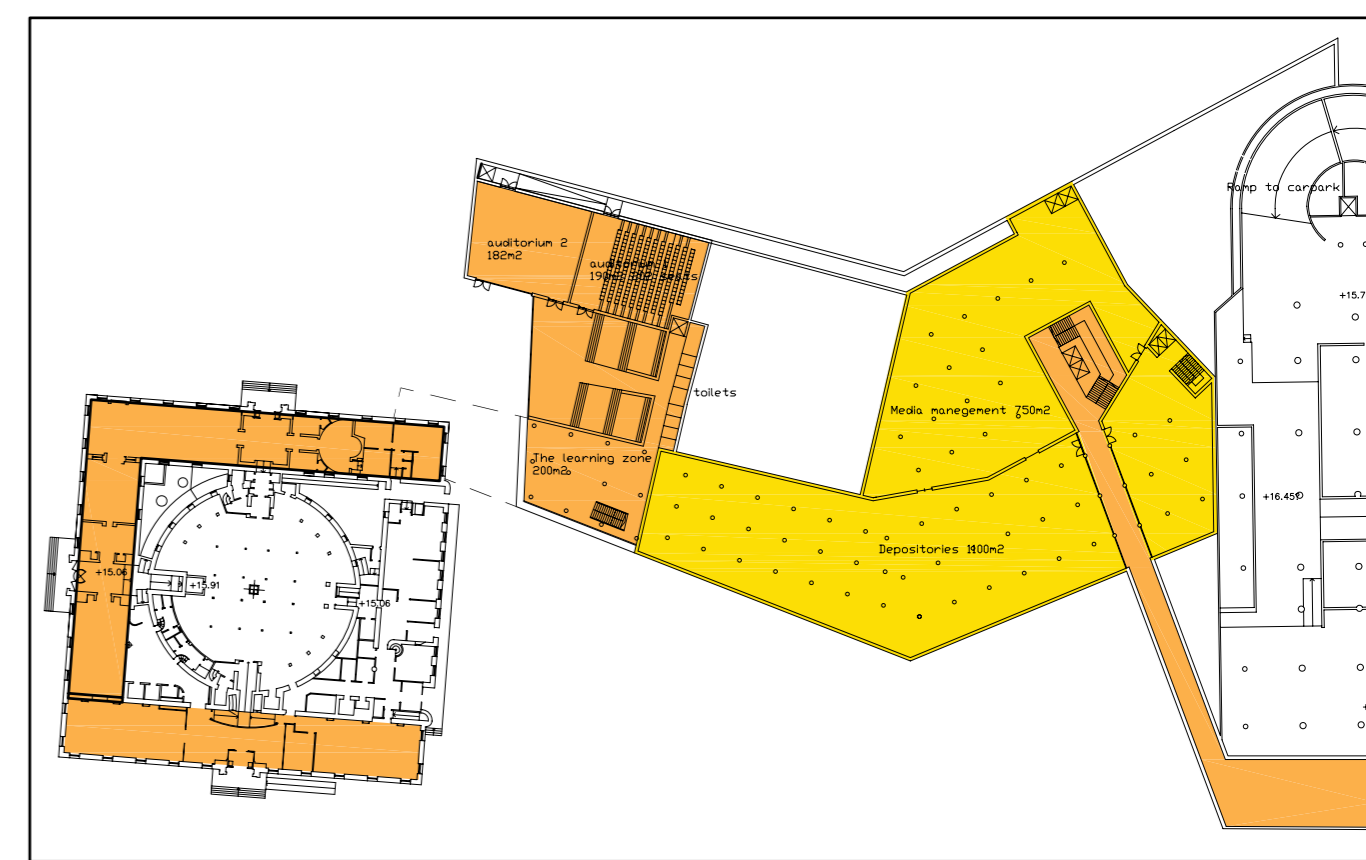


#333234165A

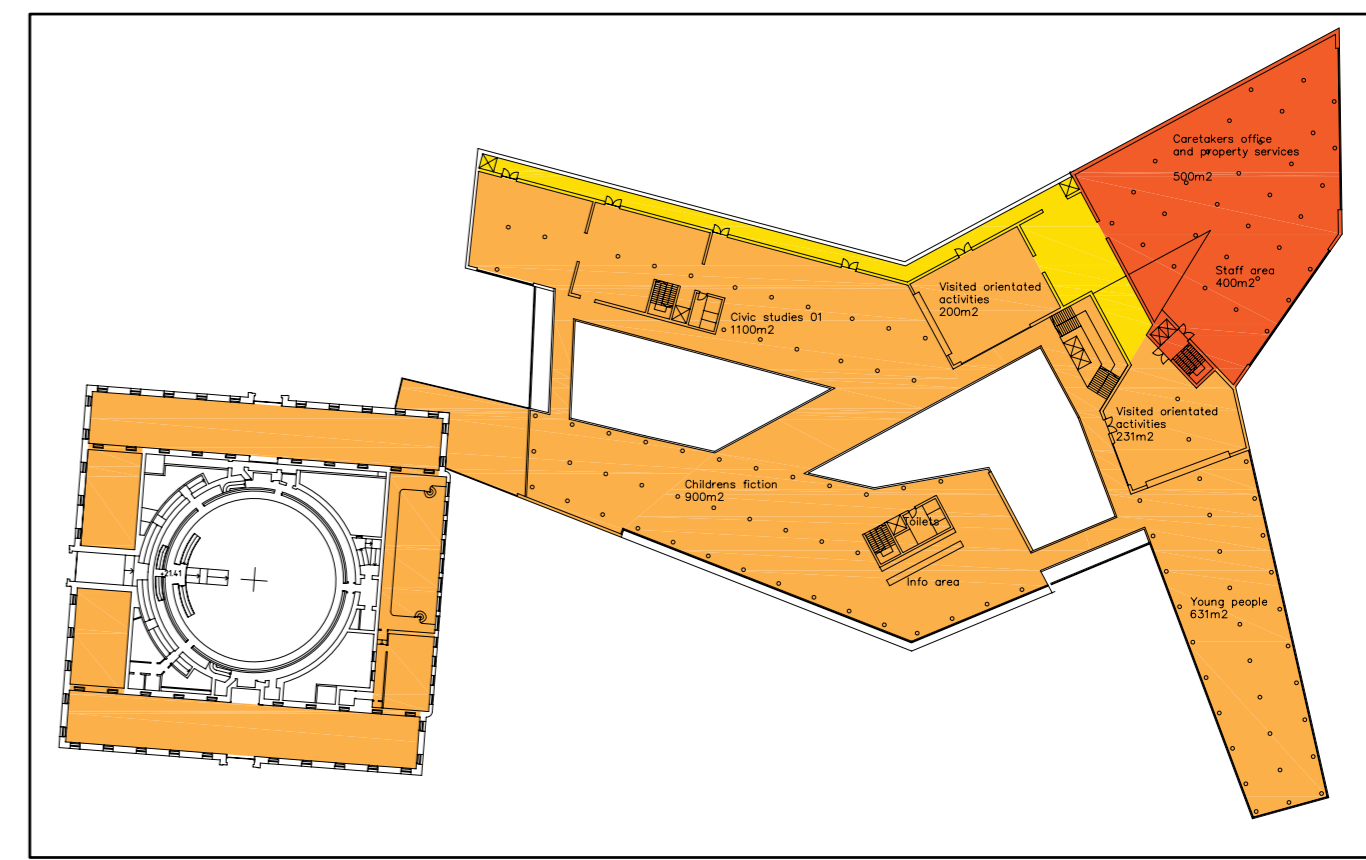
public areas
 administration and staff
 depository
 media management



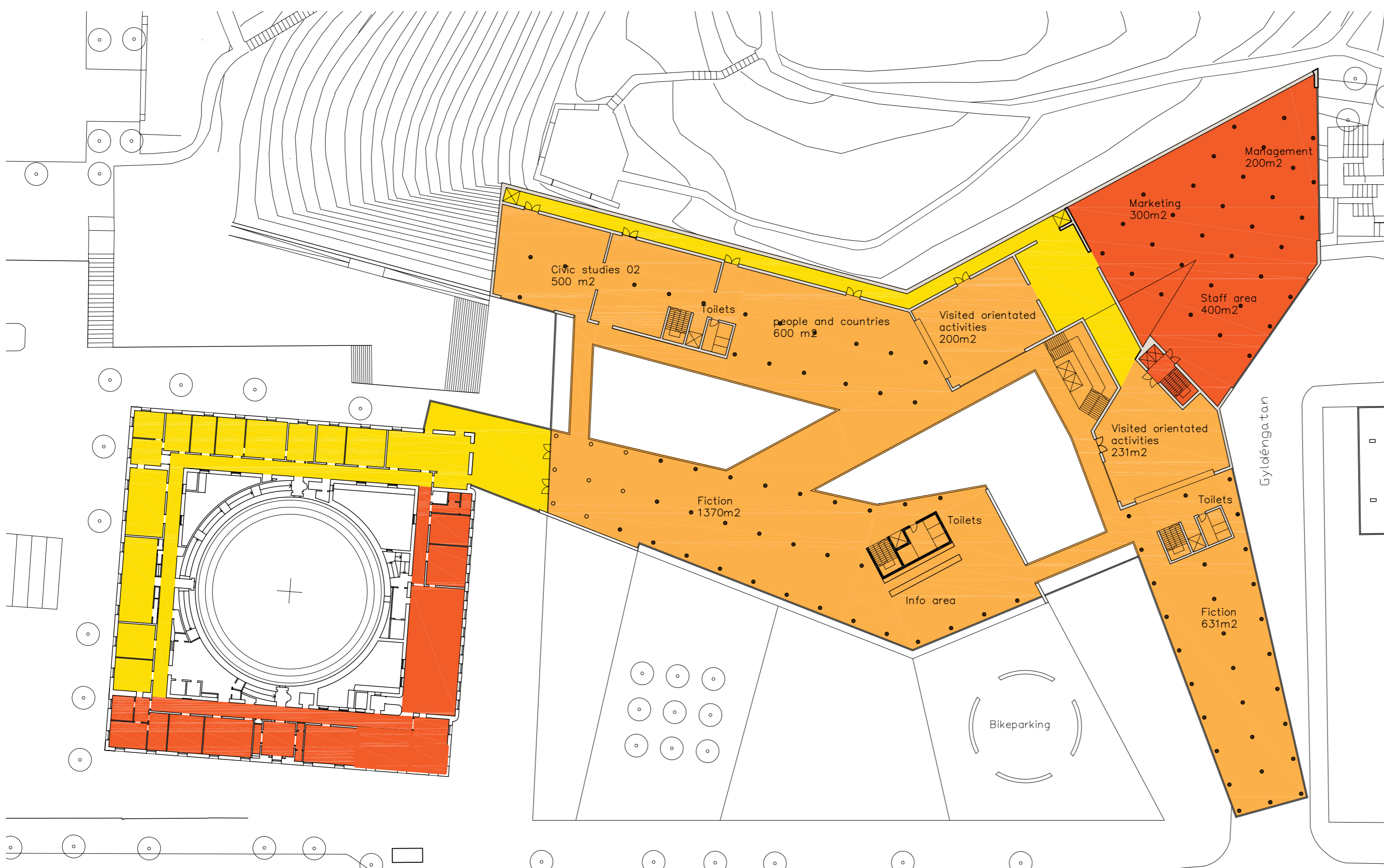
LEVEL 1 1:500



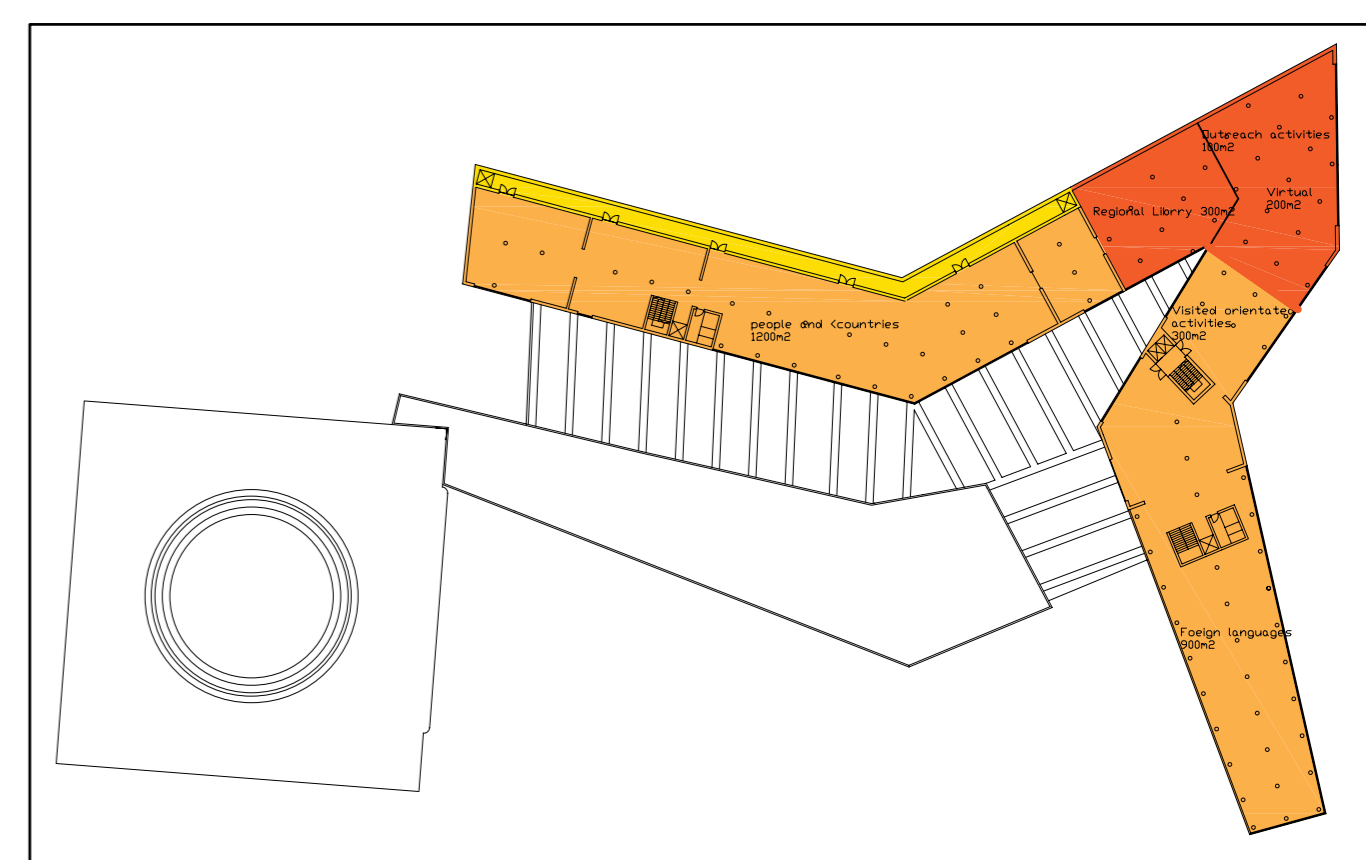
LEVEL 0 1:1000



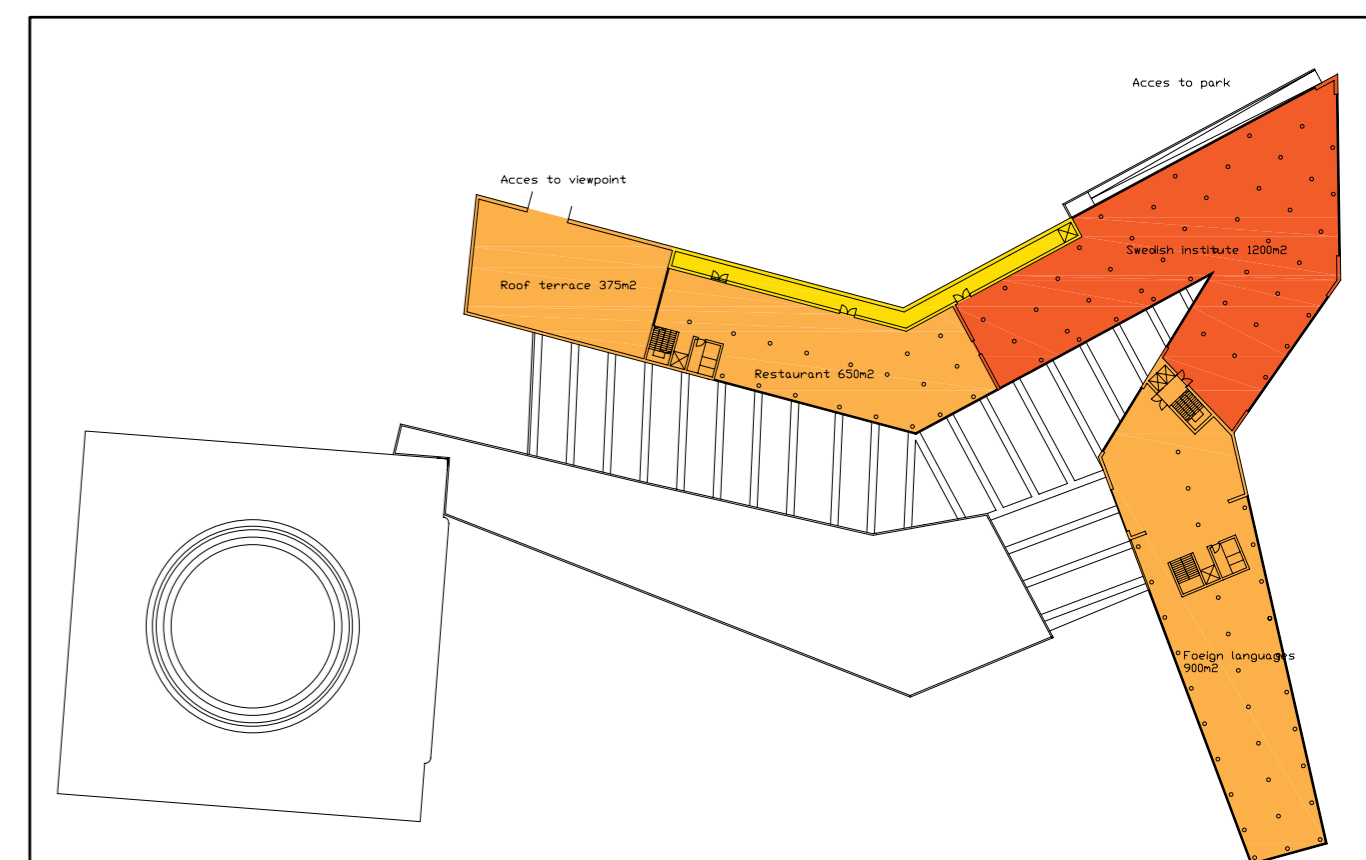
LEVEL 2 1:1000



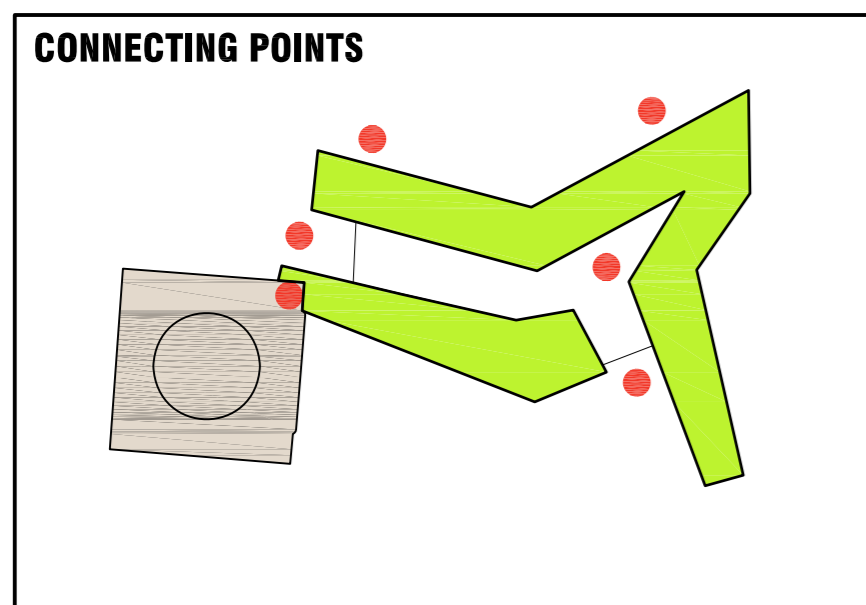
LEVEL 3 1:500



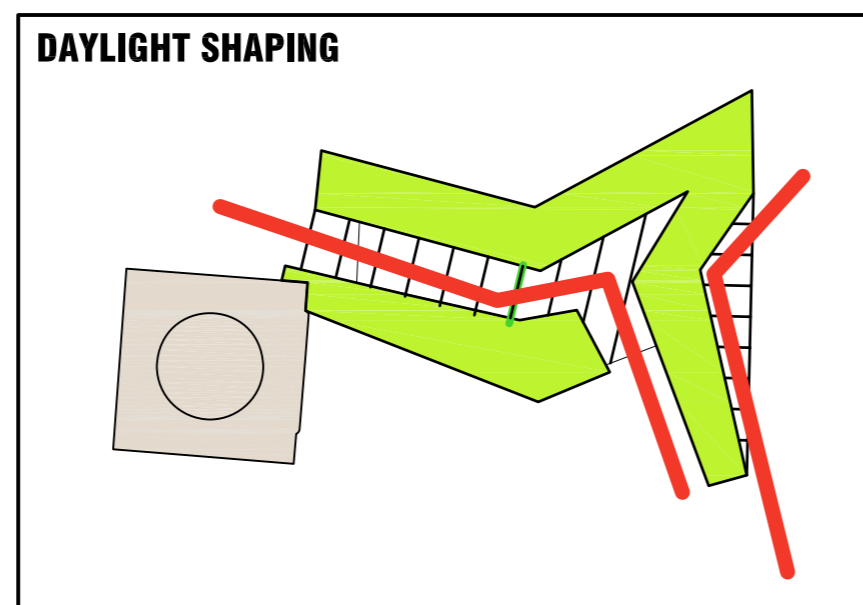
LEVEL 4 1:1000



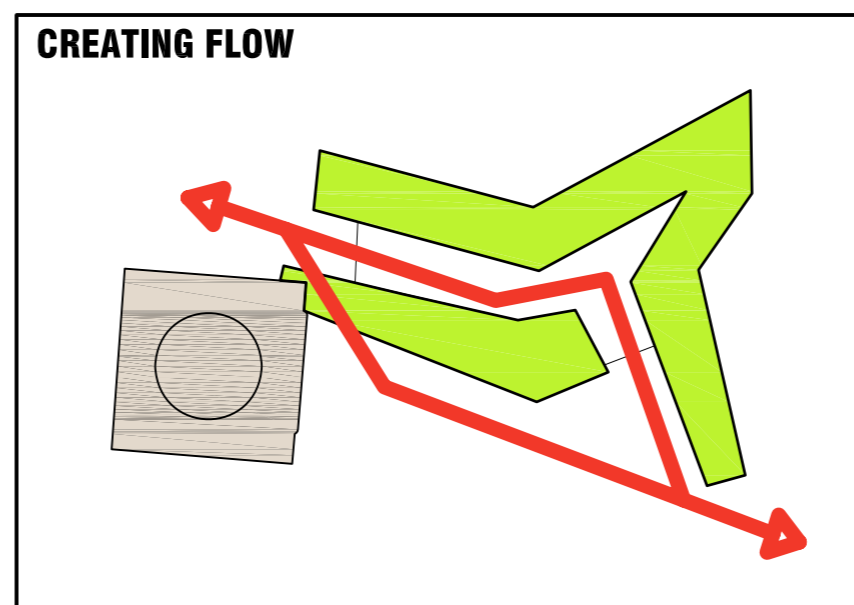
LEVEL 5 1:1000



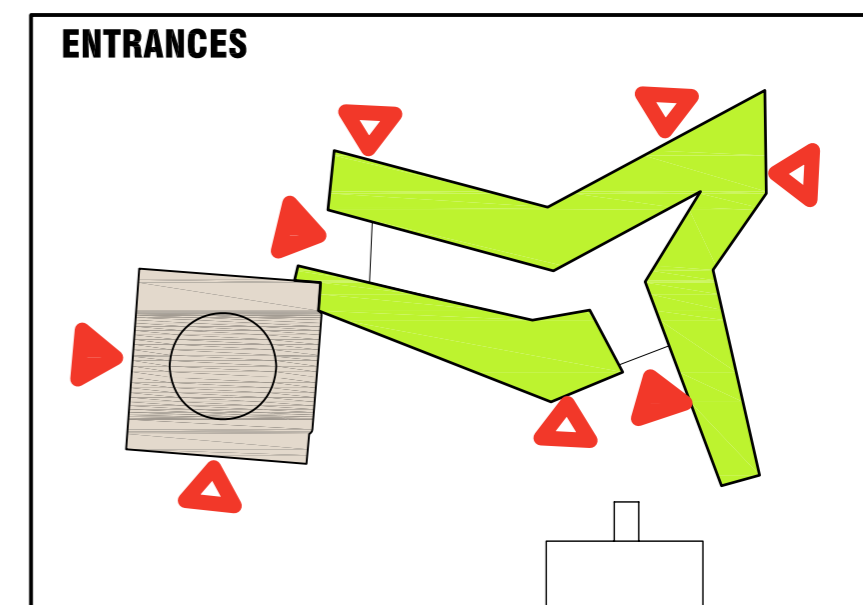
CONNECTING POINTS
 TO CITY - TO UNDERGROUND
 TO ASPLUND LIBRARY - TO POND AREA
 TO VIEWPOINT - TO PARK



DAYLIGHT SHAPING
CUTTING THE SHAPE TO ALLOW DAYLIGHT TO ENTER



CREATING FLOW
PEOPLE PASS THROUGH AND AROUND THE MEDIA HUB AND THE ASPLUND LIBRARY



ENTRANCES
 FROM ODENGATAN - FROM SVEAVÄGEN
 FROM GYLDENGATAN - FROM VIEWPOINT
 FROM UNIVERSITETS PARKEN - FROM CAFÉ

